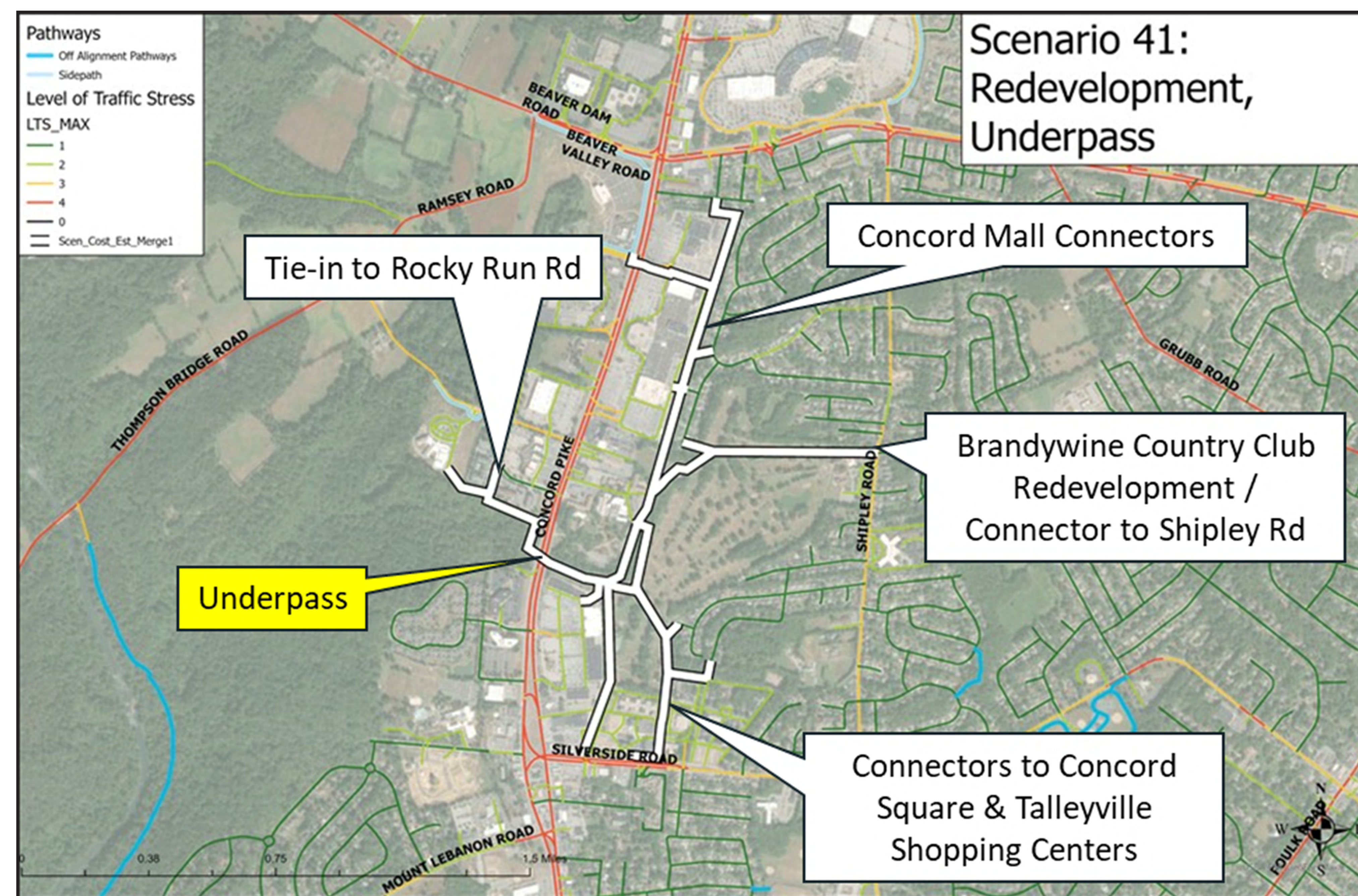


# ROCKY RUN PATHWAY UNDERPASS

## Feasibility Study

### Background



- A bicycle/pedestrian connection (underpass) was included as a recommendation in the Concord Pike Corridor Master Plan to connect the east and west sides of Concord Pike
- The underpass was identified as one of the Monitoring Committee's bicycle/pedestrian initial priorities
- The underpass was included as a Spotlight Topic at March 20, 2024 CPMC Committee Meeting

### Existing Conditions





# ROCKY RUN PATHWAY UNDERPASS

## Feasibility Study

### Opportunities and Challenges



- Would need to physically block water from entering area to be used for pedestrians
- Value of the pedestrian underpass relies on ability to connect to other parts of the local pedestrian and bicycle network
- Underpass and connections must meet American Disability Act (ADA) Accessibility Guidelines
- Additional safety and security considerations:
  - Pedestrian lighting
  - Surveillance
  - Bigger storms events





# ROCKY RUN PATHWAY UNDERPASS

## Feasibility Study

### Next Steps

- Rocky Run Pathway Underpass Feasibility Study is included in WILMAPCO's Fiscal Year 2025 Unified Planning Work Program (UPWP)
- The study will begin in Summer 2024
- The study will assess the feasibility of closing one of the three cells of the culvert for a pedestrian and bicycle pathway, including connections to nearby pedestrian and low stress cycling facilities
- The study will include extensive public outreach

