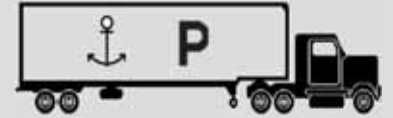




PORT OF WILMINGTON TRUCK PARKING STUDY



January 2013

Who is WILMAPCO?

- Wilmington Area Planning Council ("WILMAPCO")
- Metropolitan Planning Organization
- Long-range Transportation Plan
- Local Community Plans



Agenda

- Overview
- Port and community ideas
- State of the practice
- Truck patterns
- Potential parking sites
- Other work
- Next steps



Overview

- Identify new truck parking area near the port
 - Allow for expansion/free space at the port
 - Address community's truck idling concerns
- Steering Committee
 - WILMAPCO
 - Port of Wilmington
 - DeIDOT
 - City of Wilmington
 - DNREC
 - Clean Air Council
 - Civic Leaders



Overview

WILMAPCO

wilmapco.org/portparking



Source: Google Earth

Port and Community Ideas

Port of Wilmington Transportation Ideas (source: DeIDOT)

No.	Improvement	Description
<i>Short-Term Needs</i>		
1.)	Truck parking areas	Alleviate backups on Terminal Avenue; free space at Port
2.)	Terminal Avenue	Sidewalks; lighting
3.)	Pigeon Point Road	Add shoulders; access for Magellan tankers
4.)	Dredging sites	Identify locations for silt
5.)	Add Dolfin to autoberth	Would accommodate larger ships
6.)	Cranes	Develop schedule for replacement
7.)	New Gate	Improve gate to ease future backups
8.)	Integration of CVISN	Install virtual WIM at the port
<i>Long-Term Needs</i>		
1.)	Extension of autoberth	Add 170 acres on River; this would add four docking sites
2.)	I-495 Interchange	Ensure good future access to highway
3.)	Rail	Extend rail to dock; increase rail car storage capability

Port and Community Ideas

Community Ideas (source: March 2010 civic meeting)

No.	Improvement	Description
1.)	Zoning changes or voluntary relocation	Industry not compatible with residential; social justice issue
2.)	Industrial site regulation	Not enough regulation by DNREC
3.)	Truck traffic	Destroys roads, worsens air quality, late-night trips, idling at interstate ramps
4.)	Terminal Avenue	Left turn violations
5.)	Pyles Lane	Reduce truck volume
6.)	Beautification	Prevent trash dumping, remove unused rail tracks, streetscape

State of the Practice

- Reviewed similar work at four seaports
 - Oakland, Seattle, Rotterdam and Hamburg
- Common Themes
 - Parking site should be well signed
 - Security (lighting, guards, fencing, cameras)
 - Sanitation (toilets and showers)
 - Food and beverages (cafés)
 - Electric plug-ins



Source: Paul Chinn, The Chronicle

State of the Practice

- Truck Stop Electrification
 - Trucks plug into the grid instead of idling
 - Reduces diesel exhaust
 - Reduces noise
 - Saves money long-term
- New Castle County TSE sites
 - I-95 Rest Area
 - Trinity Trucking

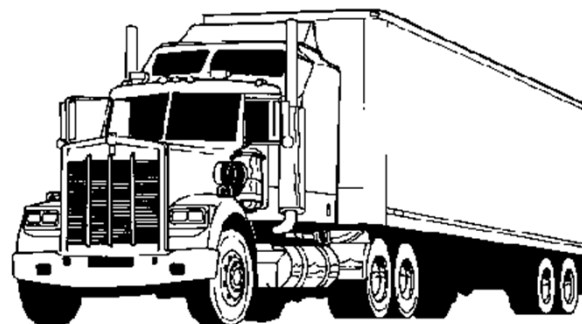


Source: Ohio Environmental Council

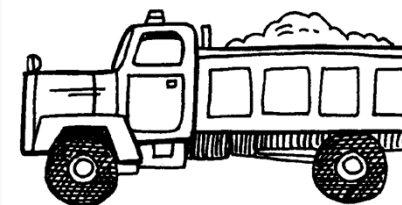
Truck Patterns

- Get a sense of truck movement around port
- Late-night trips?
- Truck restricted roadways

Combo Truck



Unit Truck





Average Weekday Traffic Counts

North - Port of Wilmington
Truck Parking Analysis

NY Ave. E. of SR9		
Class	Count	%
Autos:	649	73%
Unit Trucks:	218	24%
Combo Trucks:	28	3%

Terminal Ave. E. of SR9		
Class	Count	%
Autos:	7,266	83%
Unit Trucks:	862	10%
Combo Trucks:	604	7%

Albany Ave. E. of SR9		
Class	Count	%
Autos:	144	90%
Unit Trucks:	12	8%
Combo Trucks:	4	2%

Harrisburg Ave E. of SR9		
Class	Count	%
Autos:	247	92%
Unit Trucks:	16	6%
Combo Trucks:	5	2%

Dover Ave. E. of SR9		
Class	Count	%
Autos:	227	96%
Unit Trucks:	8	3%
Combo Trucks:	1	1%

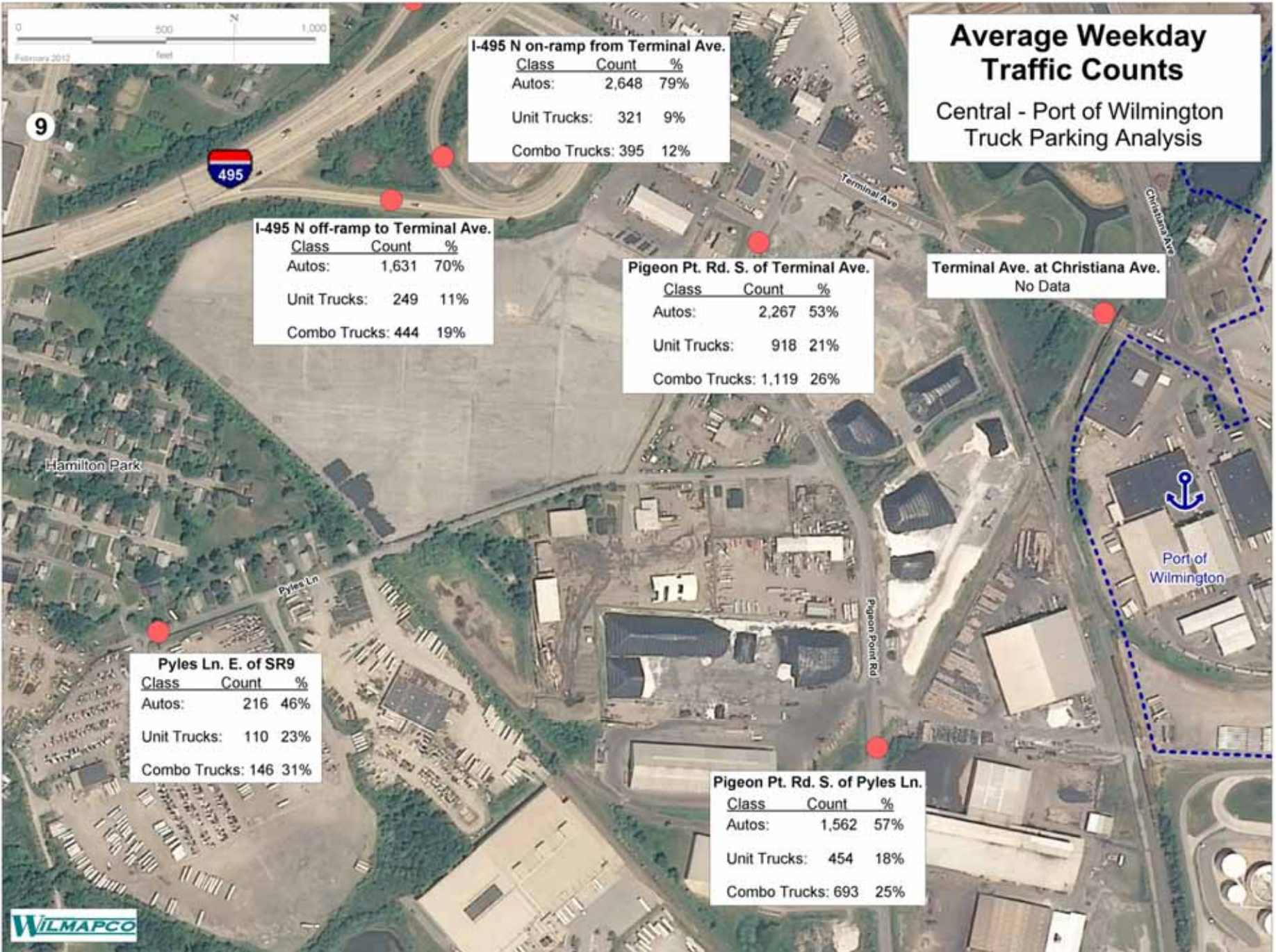
I-495 S off-ramp to Terminal Ave.		
Class	Count	%
Autos:	3,680	83%
Unit Trucks:	421	9%
Combo Trucks:	340	8%

I-495 S on-ramp from Terminal Ave.		
Class	Count	%
Autos:	1,618	66%
Unit Trucks:	360	15%
Combo Trucks:	469	19%

Christiana Ave. SE of I-495		
Class	Count	%
Autos:	1,556	83%
Unit Trucks:	239	13%
Combo Trucks:	79	4%

Average Weekday Traffic Counts

Central - Port of Wilmington Truck Parking Analysis





Average Weekday Traffic Counts

South - Port of Wilmington
Truck Parking Analysis

Lambson Ln. E of SR9

Class	Count	%
Autos:	3,687	94%
Unit Trucks:	169	4%
Combo Trucks:	48	2%

Hillview Ave. E. of SR9

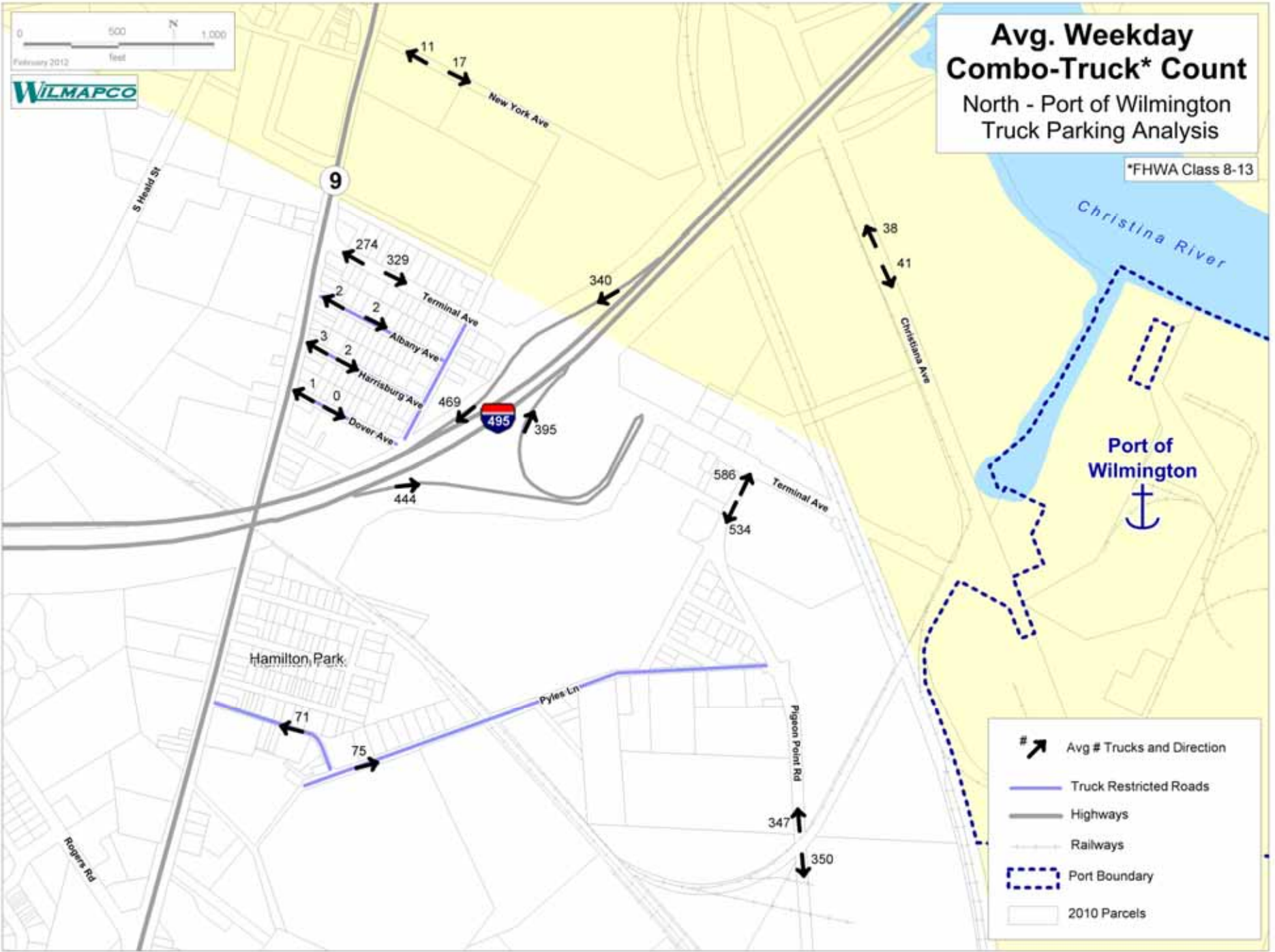
Class	Count	%
Autos:	1,377	96%
Unit Trucks:	47	3%
Combo Trucks:	8	1%

Lambson Ln. at Pigeon Pt. Rd.

Class	Count	%
Autos:	1,656	74%
Unit Trucks:	237	11%
Combo Trucks:	342	15%

West Ave. E. of SR9

Class	Count	%
Autos:	3,554	96%
Unit Trucks:	110	3%
Combo Trucks:	23	1%

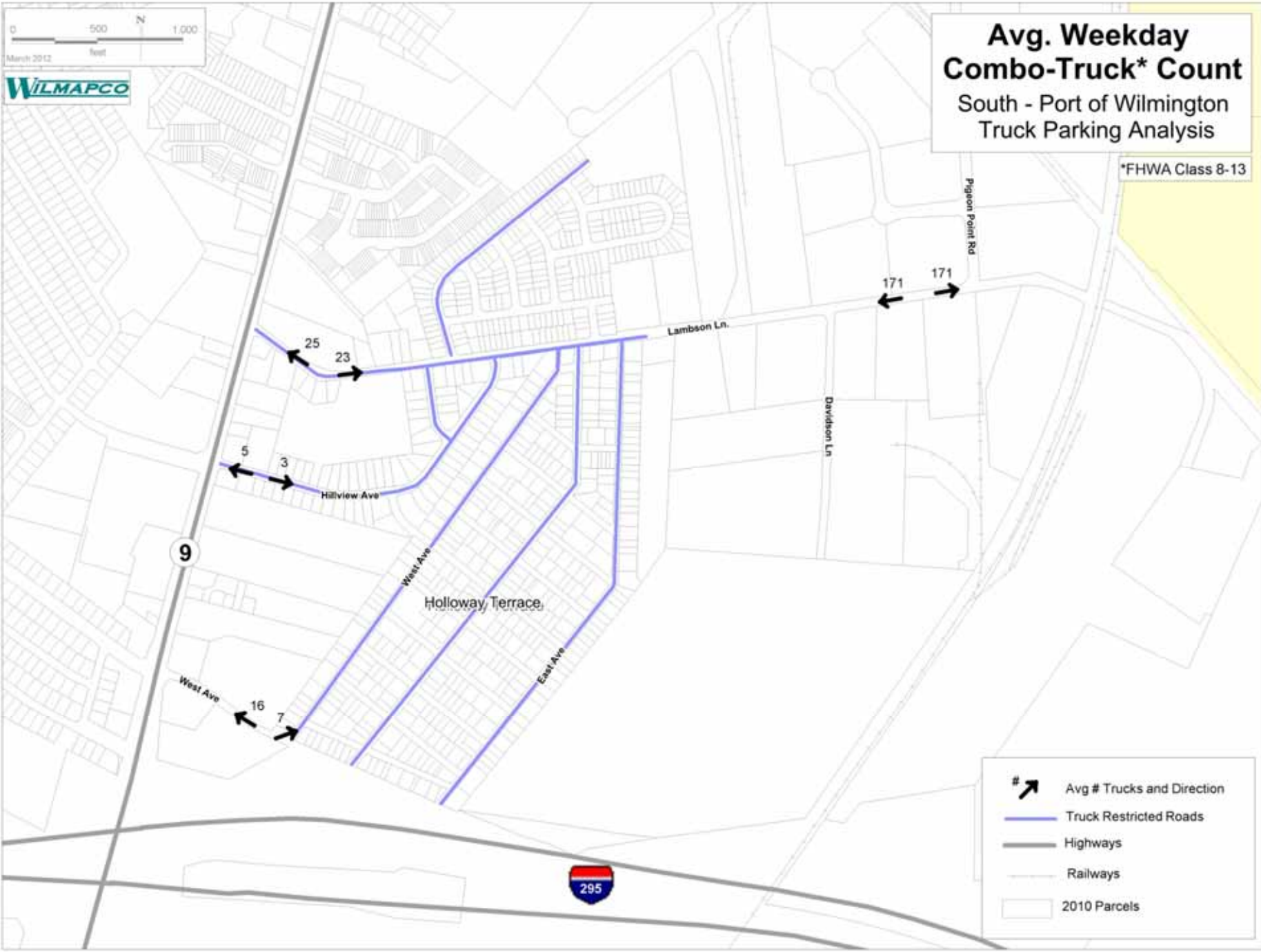




Avg. Weekday Combo-Truck* Count

South - Port of Wilmington
Truck Parking Analysis

*FHWA Class 8-13

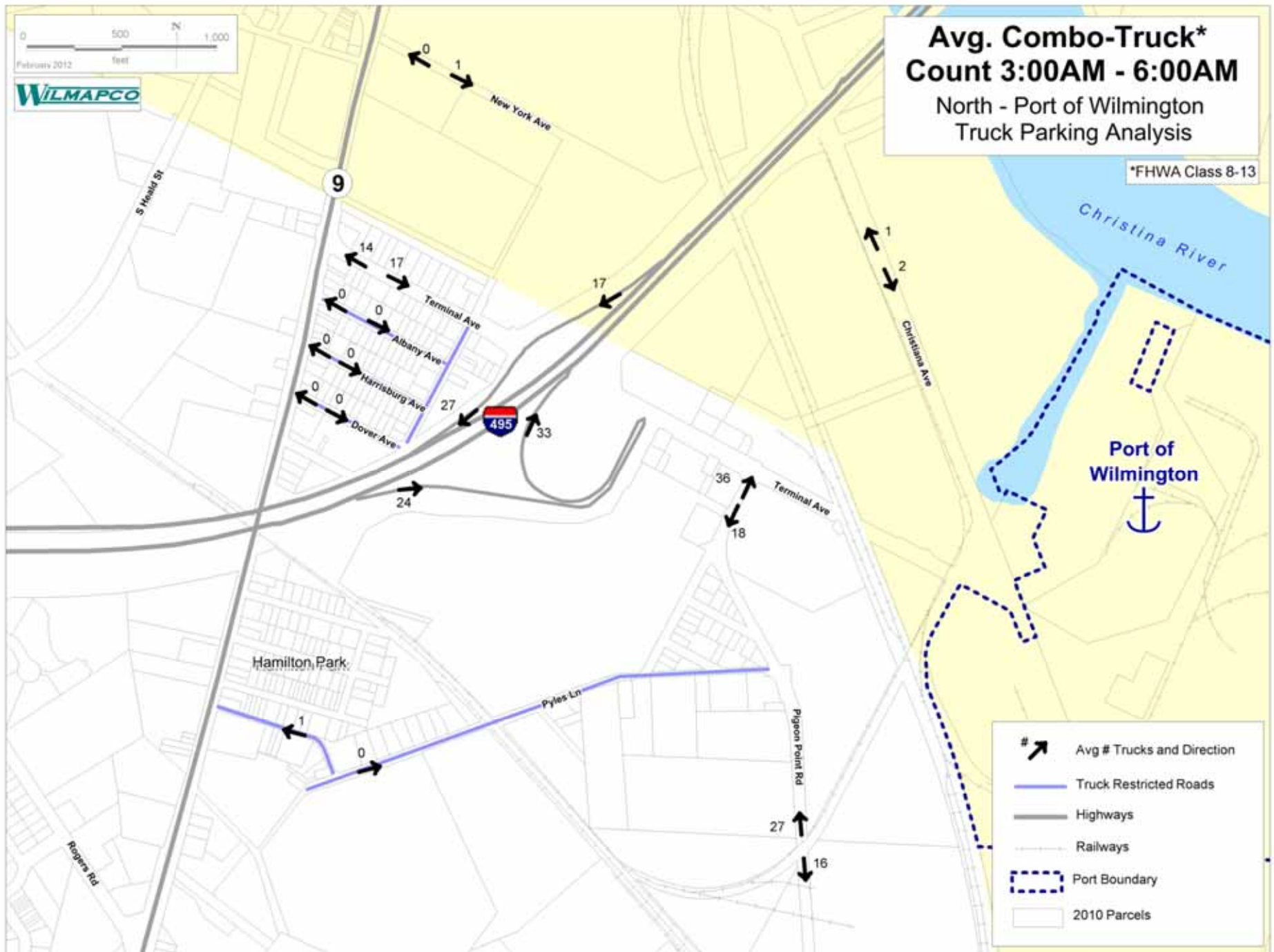


- # ↗ Avg # Trucks and Direction
- Truck Restricted Roads
- Highways
- Railways
- 2010 Parcels

Avg. Combo-Truck* Count 3:00AM - 6:00AM

North - Port of Wilmington
Truck Parking Analysis

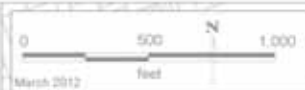
*FHWA Class 8-13



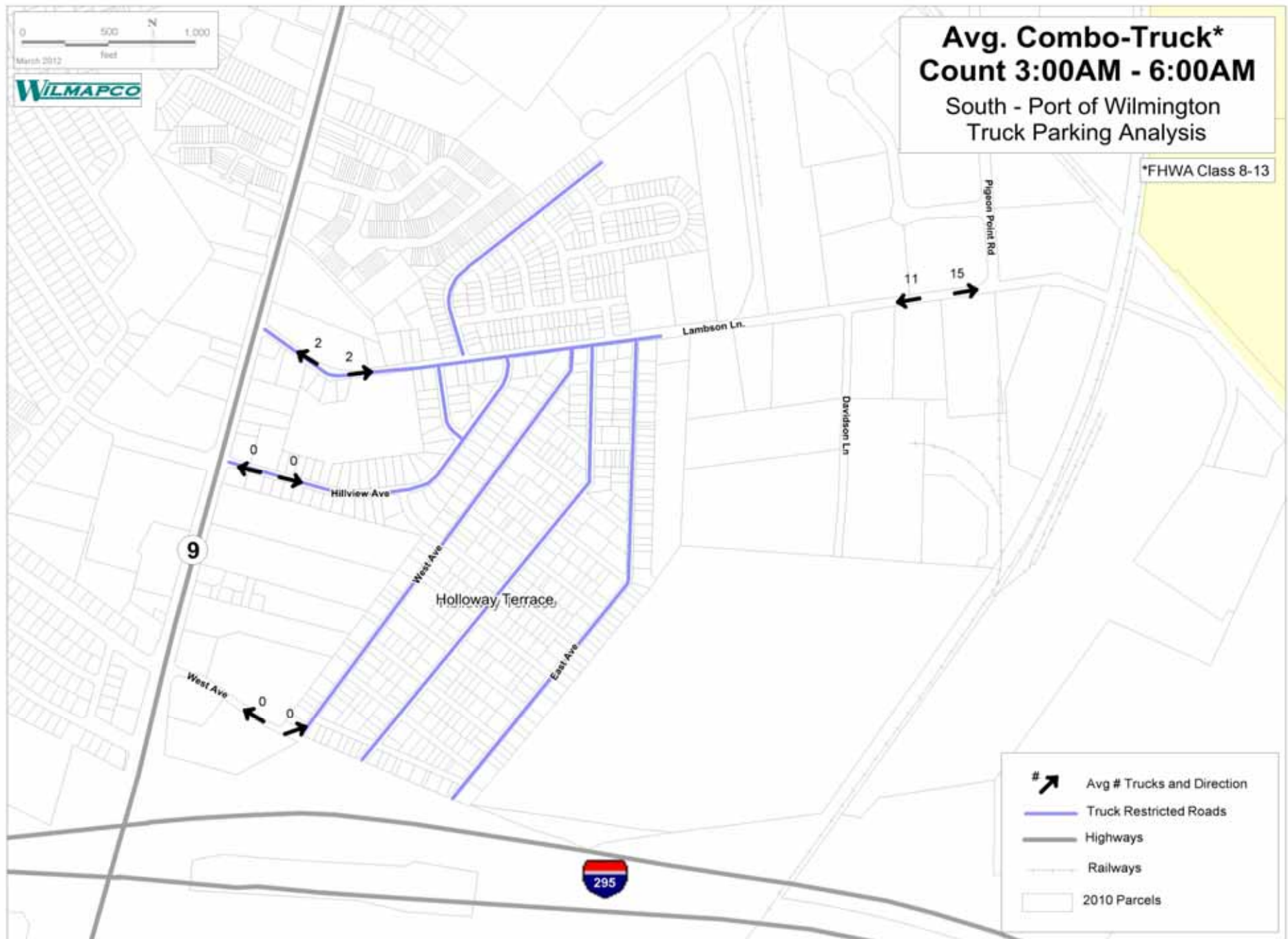
Avg. Combo-Truck* Count 3:00AM - 6:00AM

South - Port of Wilmington
Truck Parking Analysis

*FHWA Class 8-13



WILMAPCO



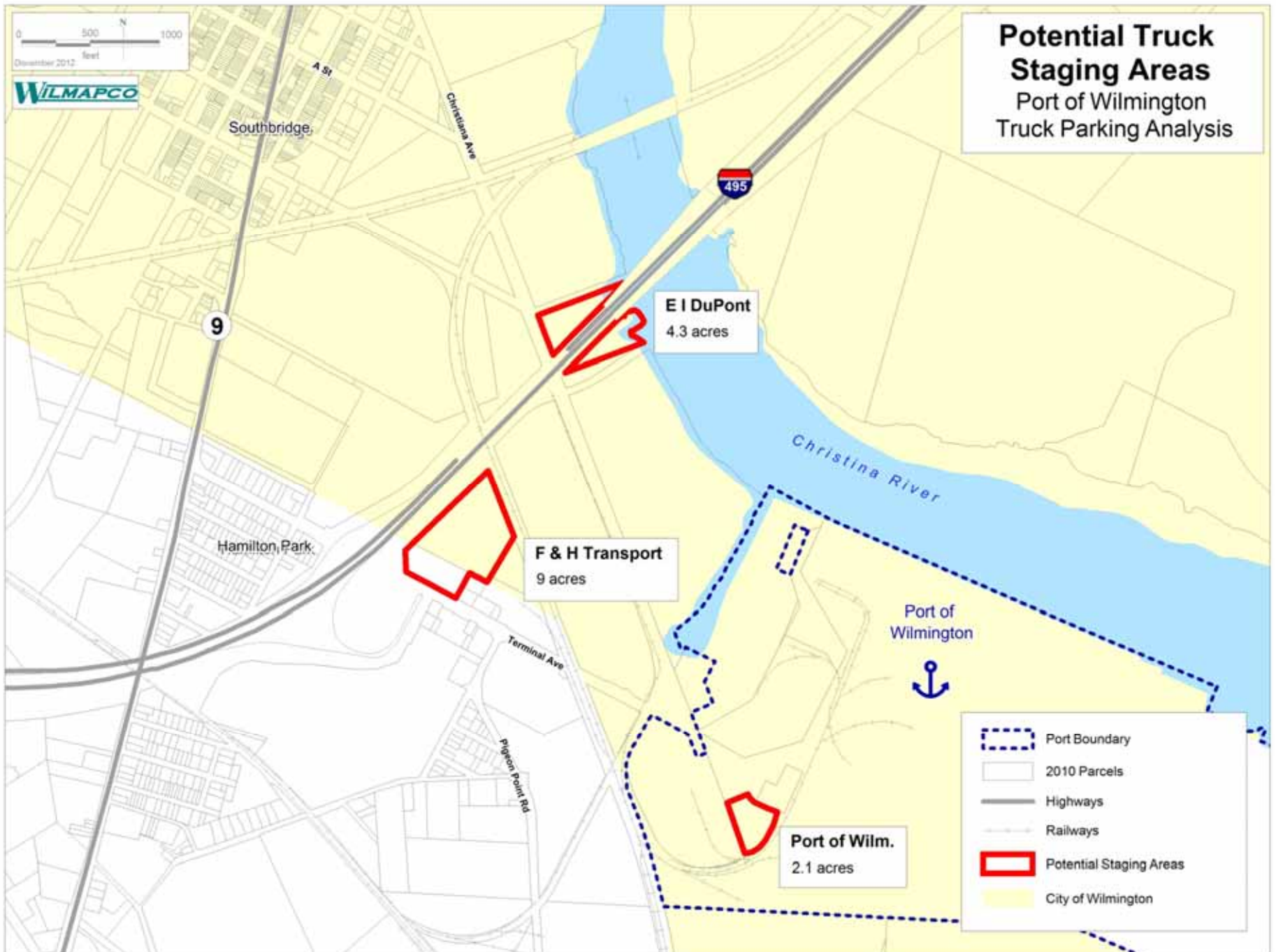
Truck Patterns

- Most truck movement around port
- Potential violations of truck-restricted roads
 - Especially Pyles Lane and Lambson Lane
- Early morning (3 AM to 6 AM) truck movements confirmed
 - Especially along Pigeon Point Road
- Good potential for use of parking site

Potential Truck Parking Areas

- Nearby the port
- Can handle at least 30 trucks
- Three sites identified





El DuPont: Christiana Avenue

- 4.3 acres; 0.6 miles (2 min.); industrial
- Farthest from port
- Christina Lab site
- Free of activity
- Sea level rise impacts



F & H Transport: Terminal Avenue

- 9 acres; 0.5 miles (1 min.); commercial
- Closest to interstate
- Most developed/active
- Likely most expensive
 - \$276k



Port of Wilmington: Existing Parking

- 2.1 acres; 0 miles (<1 min.); exempt commercial
- At port, 28 marked truck spaces
- Smallest site, little room for expansion
- Can non-port related trucks use site?



Other Work

- Non-motorized recommendations on Terminal Avenue
 - Access from bus stop at Christiana Avenue
 - Walkability to New Castle Avenue



Next Steps

- Public feedback
- Identify preferred parking site
- Assemble implementation needs
 - Truck idling/restriction enforcement and education
 - Identify potential funding sources
 - Maintenance and operation of potential parking site
- Draft report



Questions/Feedback

wilmapco.org/portparking

