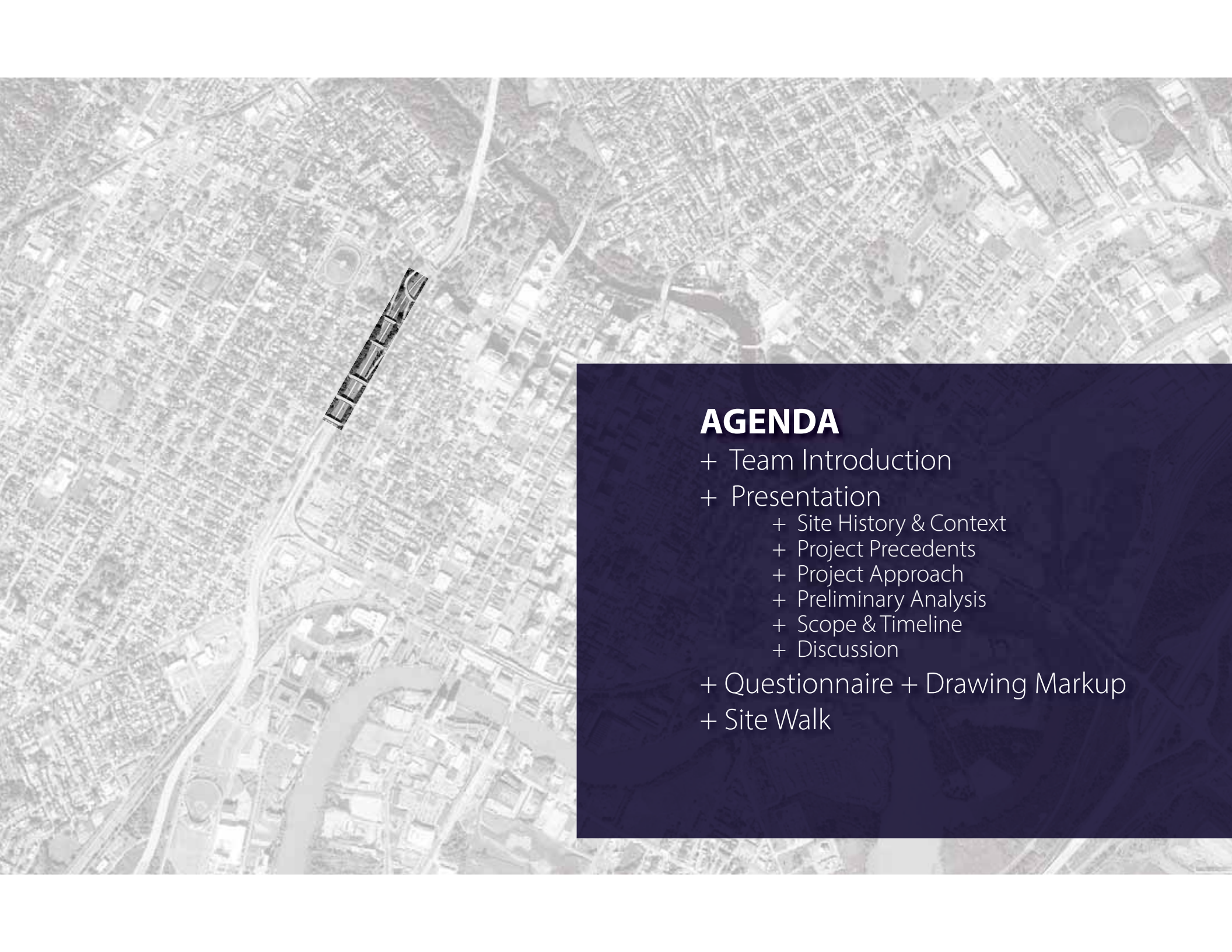


An aerial photograph of a city, likely Wilmer, Maryland, showing a dense grid of streets, residential areas, and commercial buildings. A river, the Annapolis River, flows through the city, and a major highway interchange is visible in the lower left. The image is in black and white, with a dark purple overlay on the right side containing the title text.

WILMAPCO I-95 CAP FEASIBILITY STUDY

ADVISORY COMMITTEE MEETING #1

30 September 2021



AGENDA

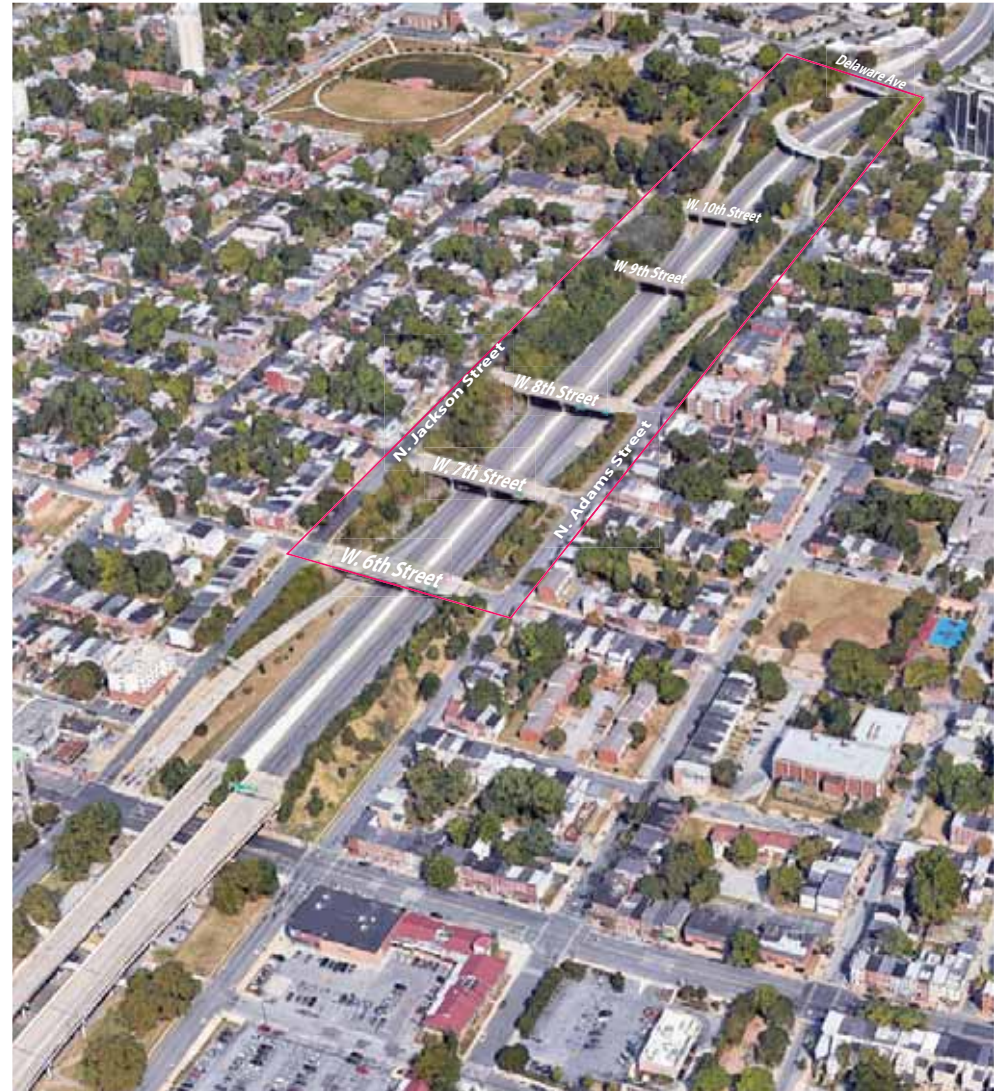
- + Team Introduction
- + Presentation
 - + Site History & Context
 - + Project Precedents
 - + Project Approach
 - + Preliminary Analysis
 - + Scope & Timeline
 - + Discussion
- + Questionnaire + Drawing Markup
- + Site Walk

ADVISORY COMMITTEE

- U.S. Senator Thomas Carper
- U.S. Senator Chris Coons
- U.S. Representative Lisa Blunt Rochester
- FHWA
- State Senators: Sarah McBride, Elizabeth Lockman, Darius Brown
- State Representatives: Gerald Brady, Nnamdi Chukwuocha, Sherry Dorsey Walker
- Delaware Transit Corporation (DTC)
- New Castle County
- City Council members: Michelle Harlee 4th, Bregetta Fields 5th, Nathan Field 8th
- Neighborhood Planning Council: 4th, 5th, 8th
- Downtown Visions
- United Neighbors
- Westside Grows Together
- Latin American Community Center
- BlindSight Delaware
- Bike Delaware
- West Center City Neighborhood Associations
- Westside Neighborhood Coalition
- Cool Spring/Tilton Park Neighborhood Coalition
- Trinity Vicinity Neighborhood Association
- Trinity Episcopal Church
- Hilltop Lutheran Church

PROJECT TEAM

WILMAPCO
DeIDOT/DTC
City of Wilmington Administration



PROJECT TEAM ORGANIZATION

CONSULTANT TEAM

HargreavesJones

PRIME / LANDSCAPE ARCHITECTURE
CAMBRIDGE, MA & NEW YORK CITY



Mary Margaret Jones
Design Lead



Kirt Rieder
Project Manager /
Principal-in-Charge



Aubrey Tyler
Job Captain / Designer

MEETING FACILITATOR



Toyin Ogunfolaju

JOHNSON, MIRMIRAN & THOMPSON (JMT)

ENGINEERING & MOBILITY
WILMINGTON, DE



David DuPlessis
Principal-in-Charge



Angie Hernandez
Project Manager



Corey Hull
Structures
Engineering
Lead



Greg Potens
Structures Engineer



Brandon Talmadge
Structures Tech



Joanna Arellano
Traffic Analysis



Sean Lain
GIS Specialist



I-95 CAP | SEPTEMBER 2021 **PROJECT TEAM**

HargreavesJones

INTRODUCTION TO HARGREAVES JONES



INTRODUCTION TO HARGREAVES JONES



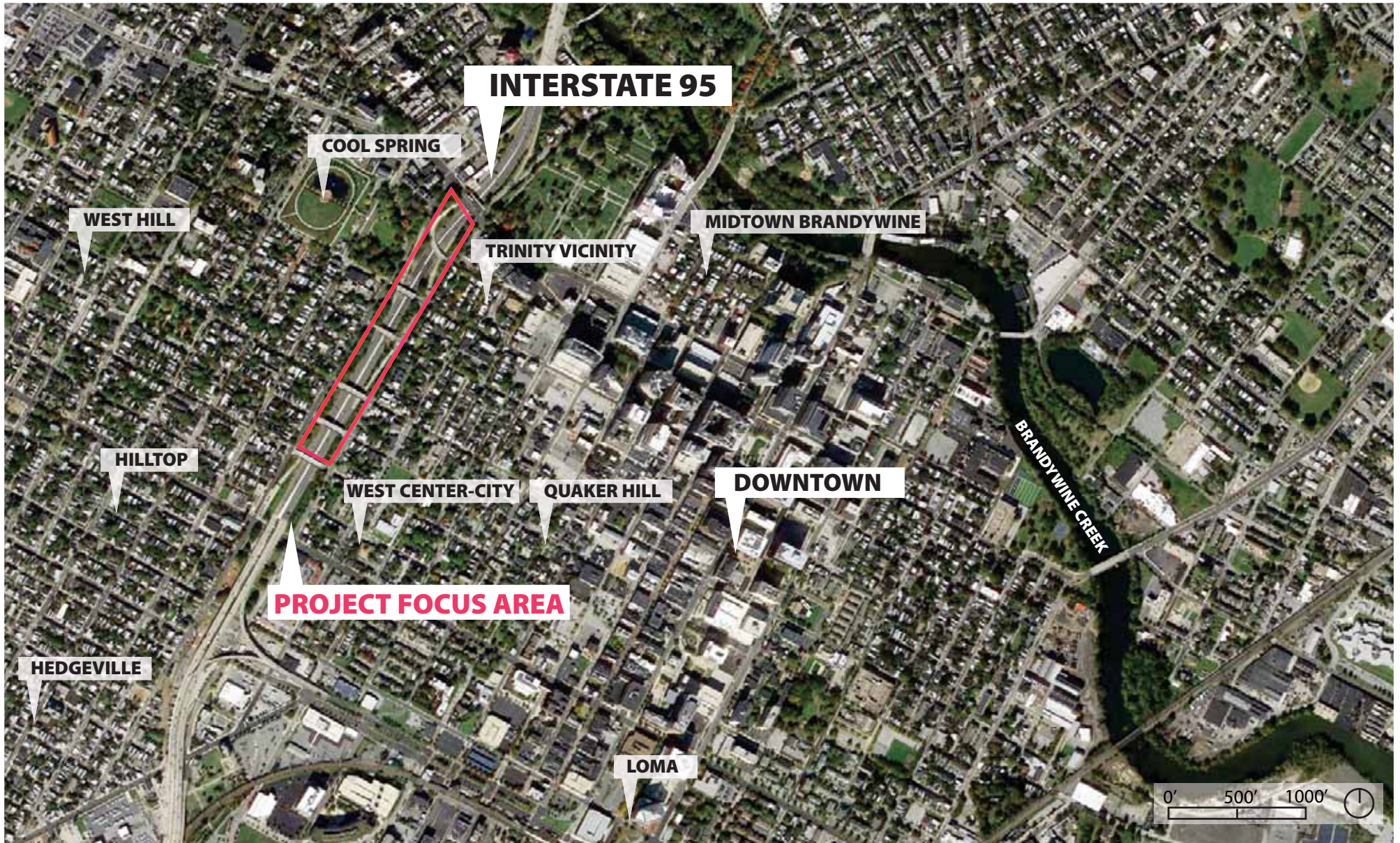
INTRODUCTION TO JMT





I-95 FEASIBILITY STUDY

PROJECT CONTEXT



"It really did devastate our community [...] It was people who you grew up with who you no longer saw. You had no idea where they moved to."

-Caren Turner West Center City Resident
(delawarepublic.org)



Companion Source: Delaware Historical Society: *Building I-95: A Community Divided*

0' 100' 200'



■ 1901 Building Footprints
— Project Boundary

1927: Dense Neighborhood Fabric



HAGLEY MUSEUM DIGITAL ARCHIVE

1957: Illustrative Plan



BUILDING I-95: A COMMUNITY DIVIDED / DELAWARE PUBLIC ARCHIVES

1959: Planning I-95



DELDOT DIGITAL ARCHIVES

1954: Residential Neighborhood Fabric



FIRSTMAP DELAWARE

1968: A Divided Neighborhood



FIRSTMAP DELAWARE

1997: Density Changes

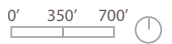


GOOGLE

Present: An Opportunity to Unite



GOOGLE

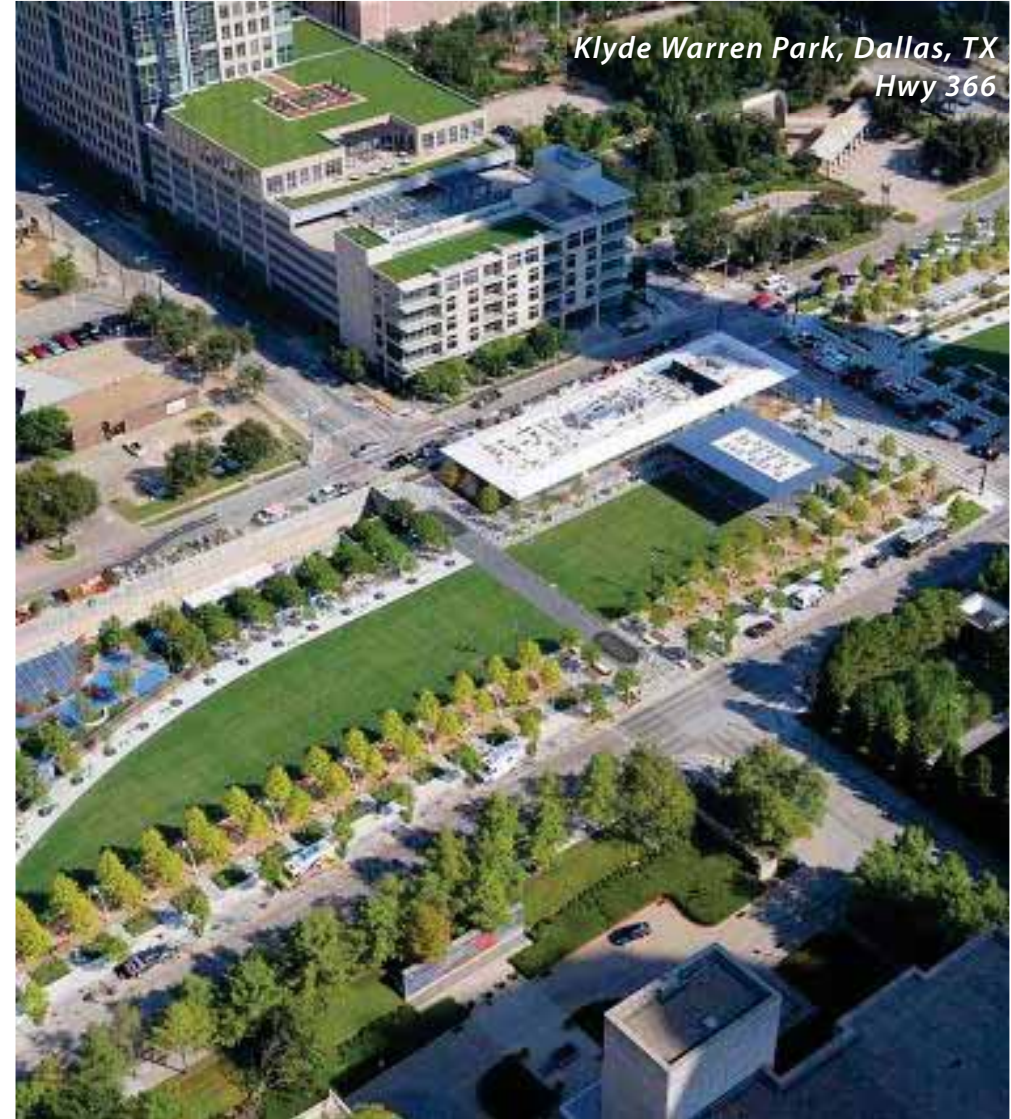




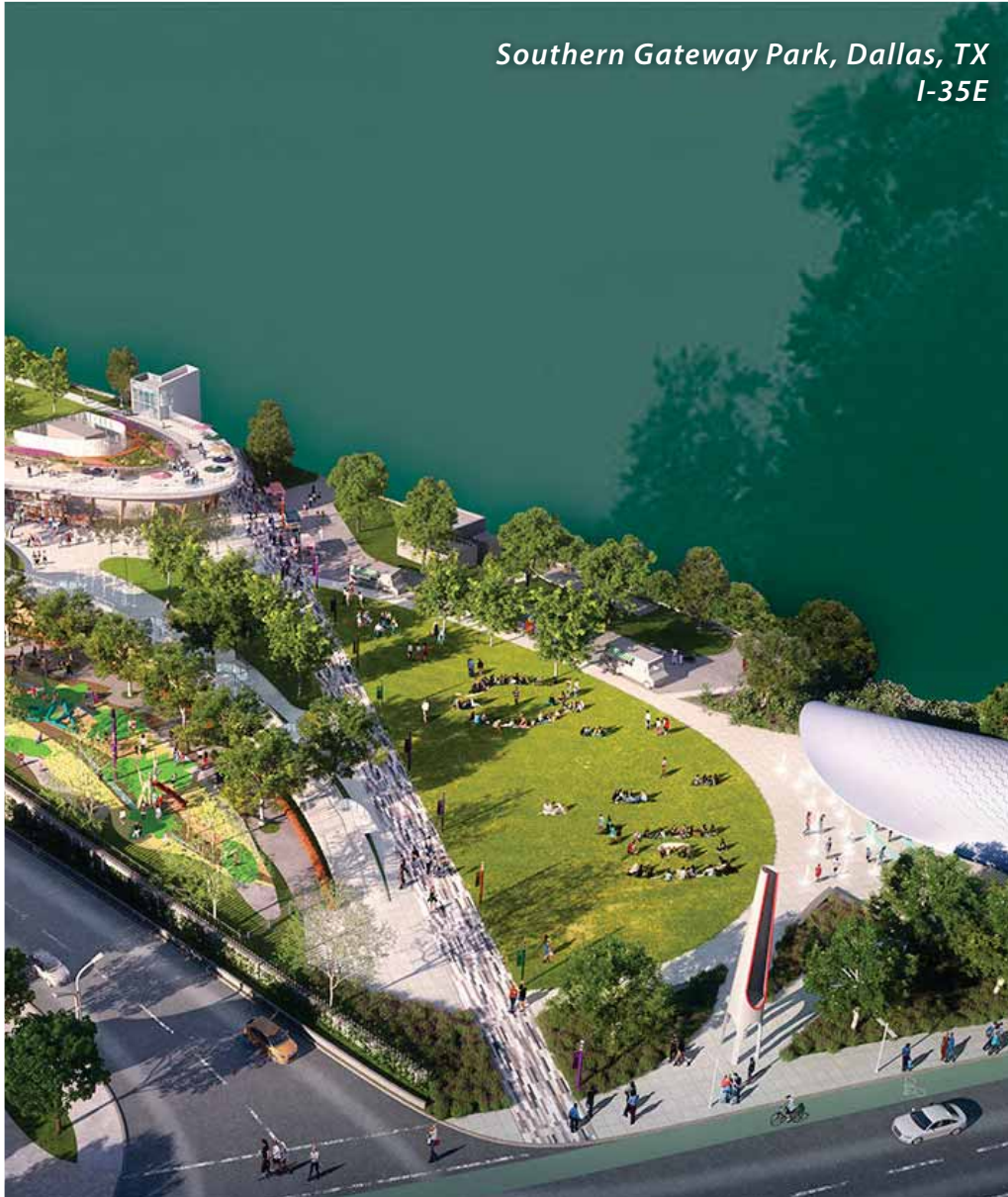
I-95 FEASIBILITY STUDY *PROJECT PRECEDENTS*



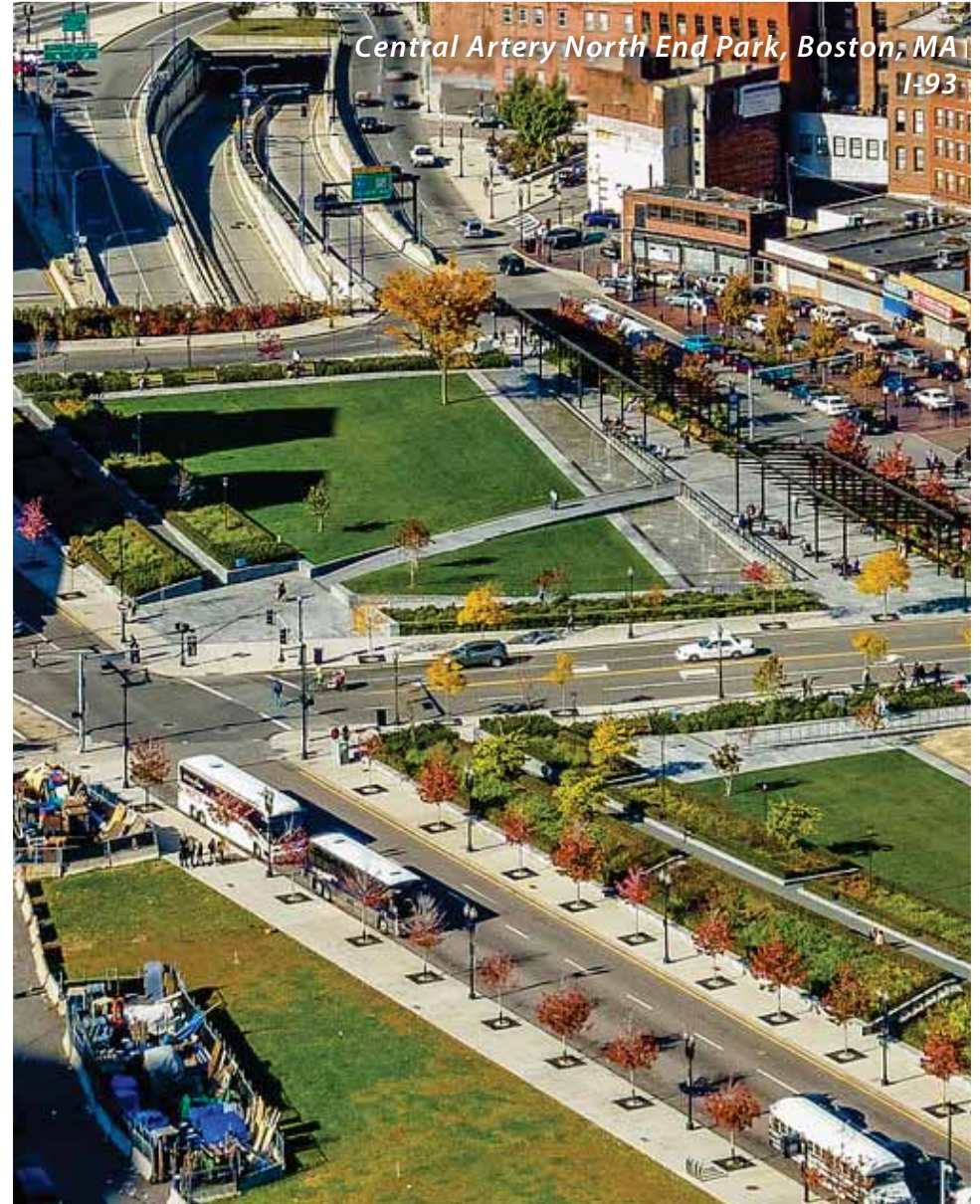
PRECEDENT: PARKS OVER HIGHWAYS



*Southern Gateway Park, Dallas, TX
I-35E*



*Central Artery North End Park, Boston, MA
I-93*



HARGREAVES JONES PRECEDENT: PHILADELPHIA PENN'S LANDING



An aerial photograph of a city, likely Los Angeles, showing a dense urban landscape with various buildings, streets, and green spaces. A prominent baseball stadium is visible in the upper left quadrant. A multi-lane highway runs diagonally across the lower left. The entire image is covered with a semi-transparent purple overlay.

I-95 FEASIBILITY STUDY *APPROACH, SCOPE, SCHEDULE*



WEST SIDE GROWS UNITED NEIGHBORS



PHOTO BY MONIQUE HARMON

THIS IS AN OPPORTUNITY

Reconnect the neighborhoods divided by the construction of I-95 by working with the community and key stakeholders to **re-imagine the future of the Jackson-Adams Corridor** between the Delaware Avenue Bridge and the 6th Street Bridge.

THIS IS A COLLABORATION

Build on community efforts by engaging local leaders, community groups, stakeholders, and neighbors. Through workshops, interviews, and collective visioning this plan will represent the **ideas and aspirations of those who know the needs of the community best.**

THIS IS THE BEGINNING.

PROJECT APPROACH: LISTENING, LEARNING, AND COLLABORATING

WE WILL HONOR HISTORY AND PLAN FOR THE FUTURE

Create a vision that is sensitive to the character, context, and story of a community requires honest and open dialogue between the public and the project team.

WE WILL BUILD TRUST FROM CLIENT TO COMMUNITY

- **Workshops**
- **Stakeholder working groups**

WE WILL ASK THE RIGHT QUESTIONS

- What does it look like to successfully “connect” communities with a diverse interests?
- How can obstacles of transportation infrastructure transform?
- How should the unique, local historical and cultural identity of place be celebrated?
- What is needed to unite broad interests and stakeholder platforms into a singular vision?
- How can sustainability and regional character come together?



PROJECT APPROACH HIGHLIGHTS

8 site visits

which will include:

6 advisory committee meetings

and

4 community workshops

that will cover

Community visioning

Design Options

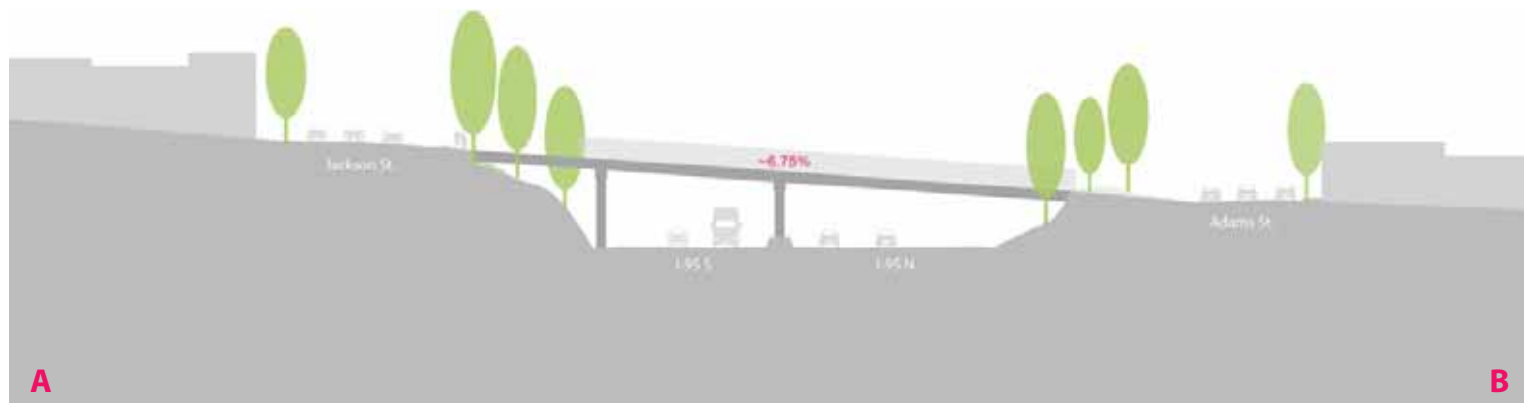
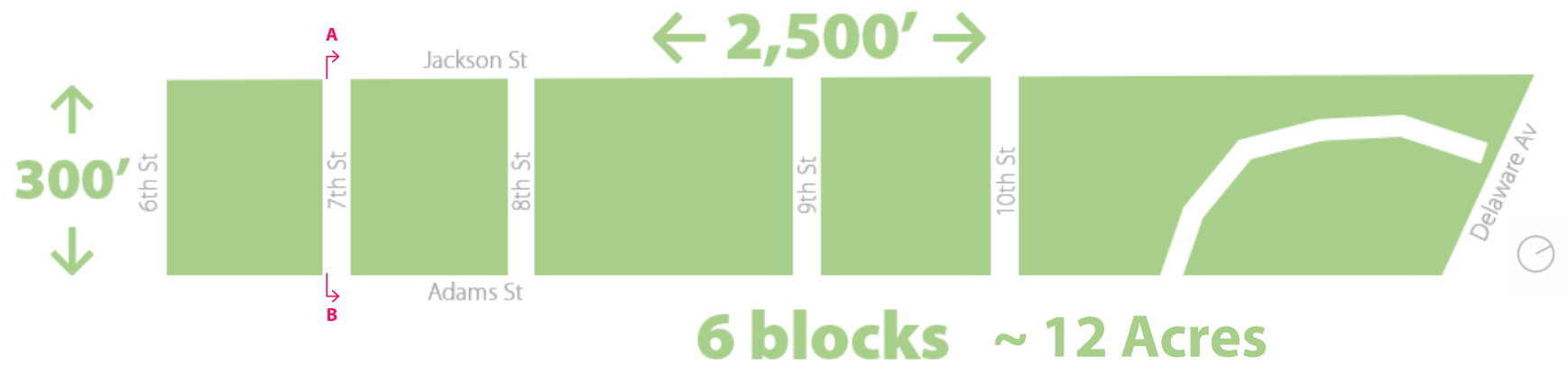
Option Feasibility

Final Design Celebration



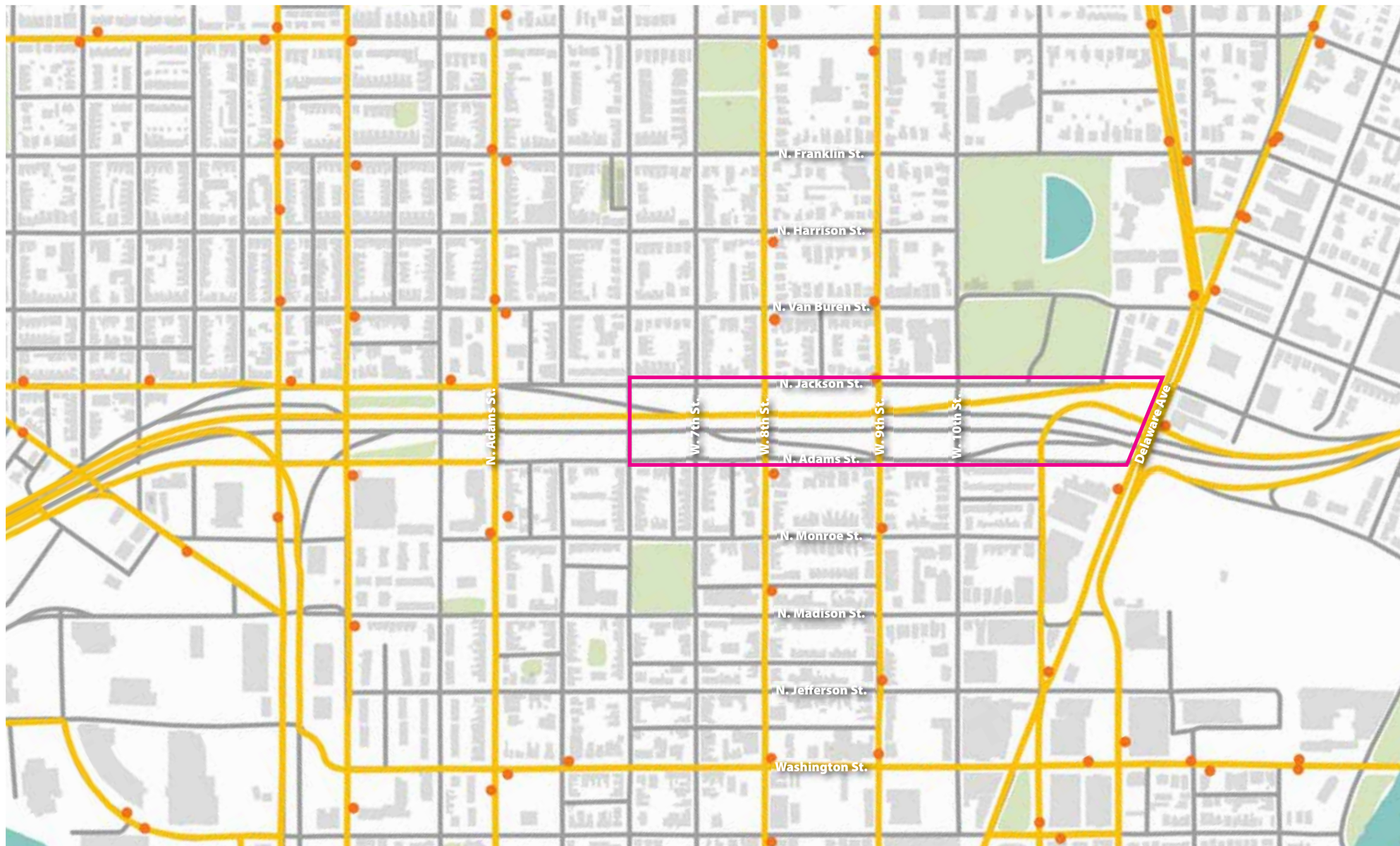


I-95 FEASIBILITY STUDY ***PRELIMINARY ANALYSIS MAPPING***



I-95 will not be re-routed or closed.

Project Site Dimensions

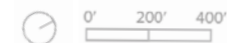


Bus Routes + Stops



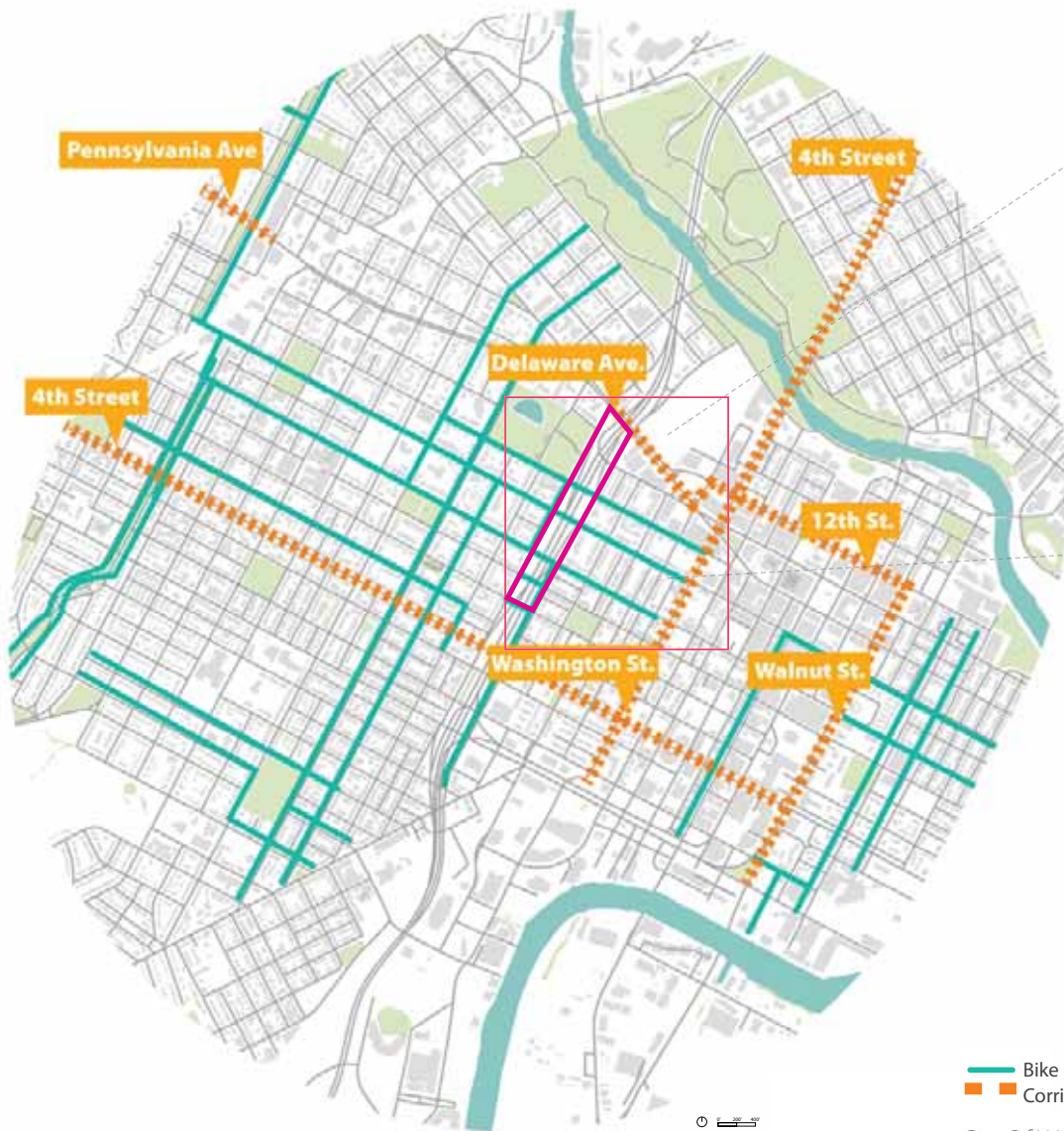
I-95 CAP | SEPTEMBER 2021 ANALYSIS

- BUS STOP
- BUS ROUTE



State of Delaware GIS

Hargreaves Jones



— Bike Plan Proposed Routes
— Corridor Studies

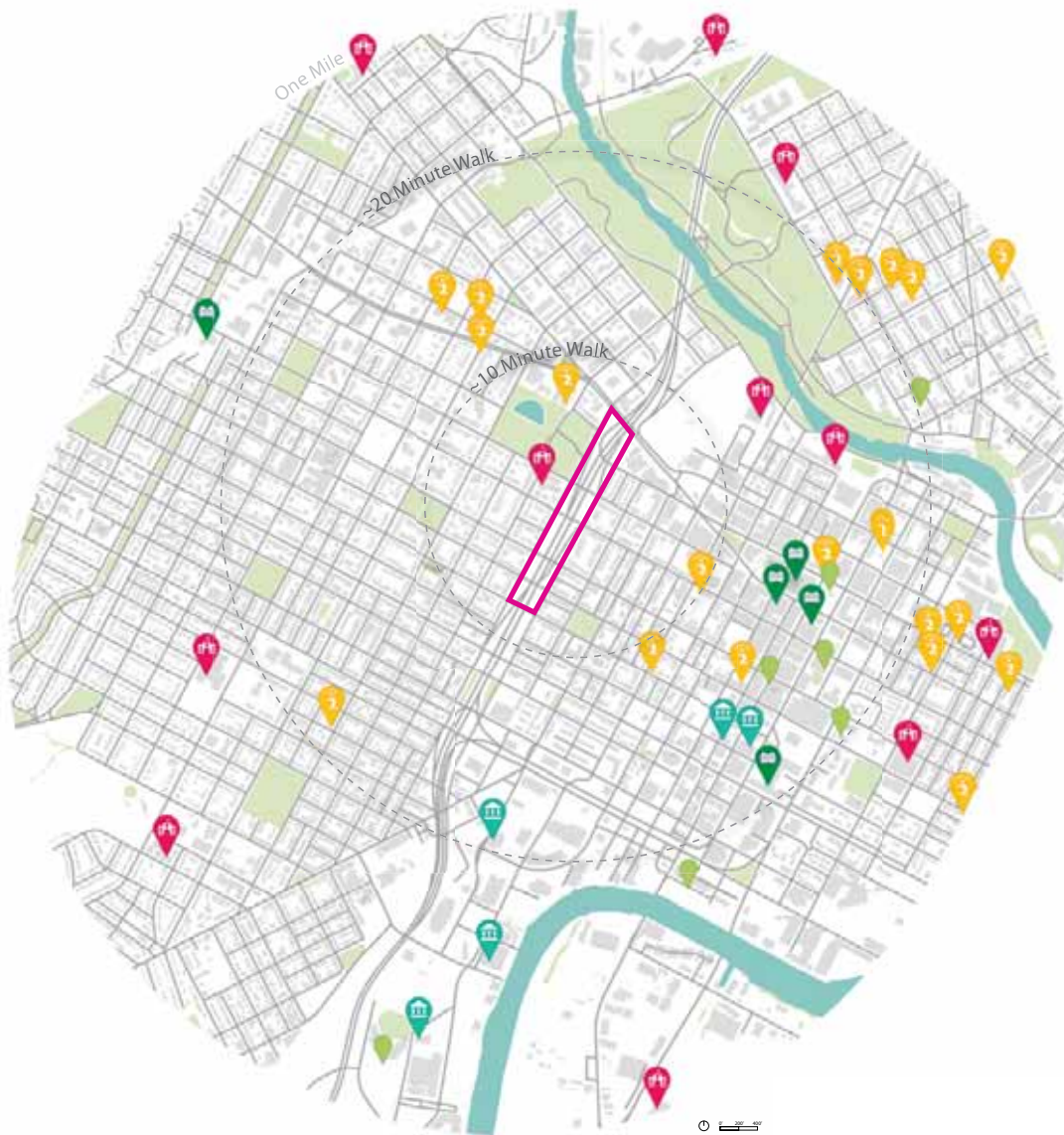
City Of Wilmington Bike Plan

City Of Wilmington Proposed Bike Plan



I-95 CAP | SEPTEMBER 2021 ANALYSIS

Hargreaves Jones



Within One Mile Of The Project Site:



5 Museums



5 Libraries



11 Schools



20+ Places Of Worship



7+ Landmarks



~10 Parks

Landmarks + Institutions

An aerial photograph of a city, likely Philadelphia, showing a dense urban landscape with numerous buildings, trees, and a prominent baseball stadium in the upper left. A multi-lane highway runs diagonally across the lower left portion of the image. The entire image is overlaid with a semi-transparent dark purple filter.

I-95 FEASIBILITY STUDY ***NEXT STEPS + DISCUSSION***

TASK 1

COMMUNITY VISIONING

- Community Engagement Plan
- Outreach Materials such as invitations and flyers for eblast distribution by WILMAPCO and posting on the project website
- Community Workshop 1 presentation
- Community Engagement Report and Synthesis of Takeaways and Priorities

TASK 2

DEFINE ASSUMPTIONS AND CREATE INITIAL CONCEPTS FOR ANALYSIS

- Initial conceptual options
- Outreach Materials such as invitations and flyers for eblast distribution by WILMAPCO and posting on the project website
- Community Workshop 2 presentation materials, including plans and other graphics to communicate design intent of options
- Preliminary Concept Feasibility Report

TASK 3

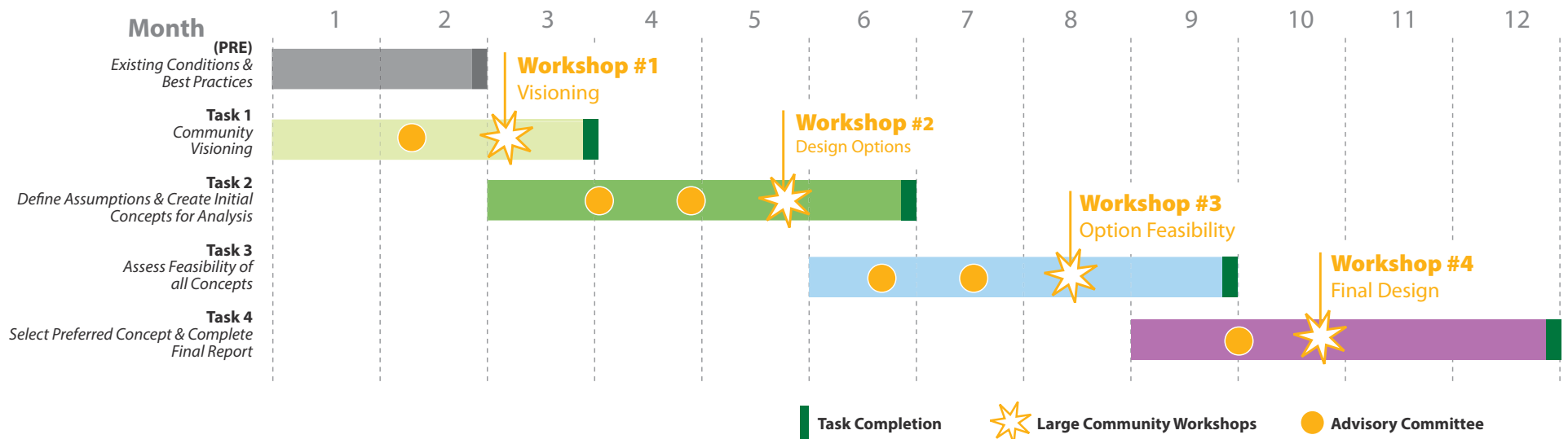
ASSESS FEASIBILITY OF ALL CONCEPTS

- Up to three (3) conceptual alternatives
- Outreach Materials such as invitations and flyers for eblast distribution by WILMAPCO and posting on the project website
- Community Workshop 3 presentation materials, including plans and other graphics to communicate design intent of options
- Feasibility Assessment Report

TASK 4

SELECT PREFERRED CONCEPT & COMPLETE FINAL REPORT

- Outreach Materials
- Community Workshop 4 presentation materials, including plans and other graphics to communicate design intent of options
- Summary materials for posting on the project website, including illustrative depictions of the preferred alternative.
- Attendance, in person or teleconference, at Project Management Committee, Advisory Committee, and/or joint committee meetings.
- Community Workshop summaries
- Final Feasibility Report including PEL Study results (one high-quality printed copy and one electronic MS Word document)



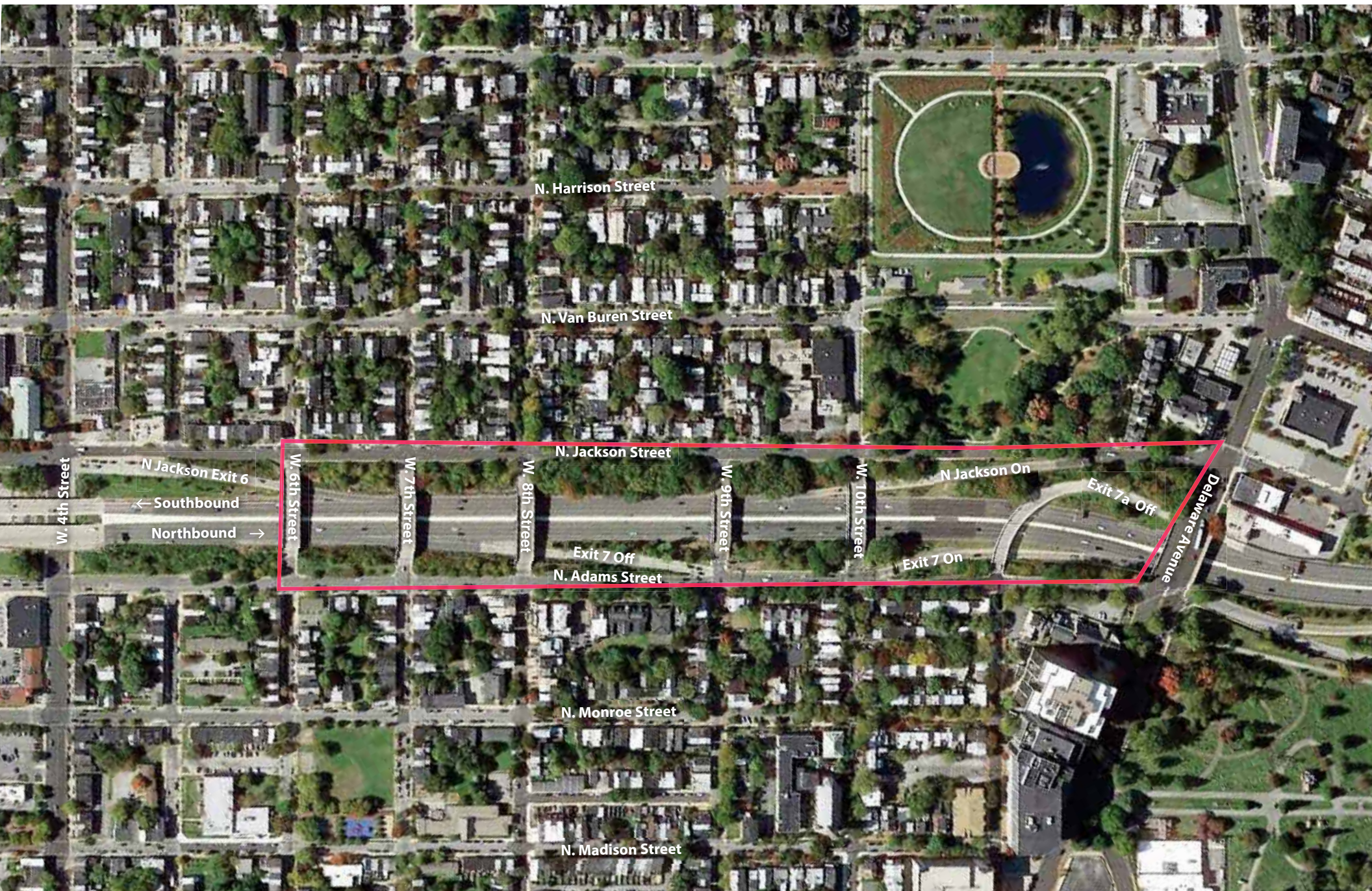
DISCUSSION

- What should this project be called?
 - I-95 Cap Study
 - Wilmington, DE I-95 Cap Feasibility Study
 - Something Else?

NEXT STEPS

- Schedule remaining advisory committee meeting dates
- Schedule first Community Workshop
- Determine whether each are in-person, Zoom, or online.
- After Community Workshop #1, share summary of event with Advisory Committee





N. Harrison Street

N. Van Buren Street

N. Jackson Street

W. 4th Street

N Jackson Exit 6

← Southbound

Northbound →

W. 6th Street

W. 7th Street

W. 8th Street

W. 9th Street

W. 10th Street

Exit 7 Off

N. Adams Street

N Jackson On

Exit 7 On

Exit 7a Off

Delaware Avenue

N. Monroe Street

N. Madison Street