

# First/Final Mile Freight Network Update: New Castle County, DE

Interim Study Update for the  
Delaware Winter Freight Meeting

DECEMBER 11, 2024



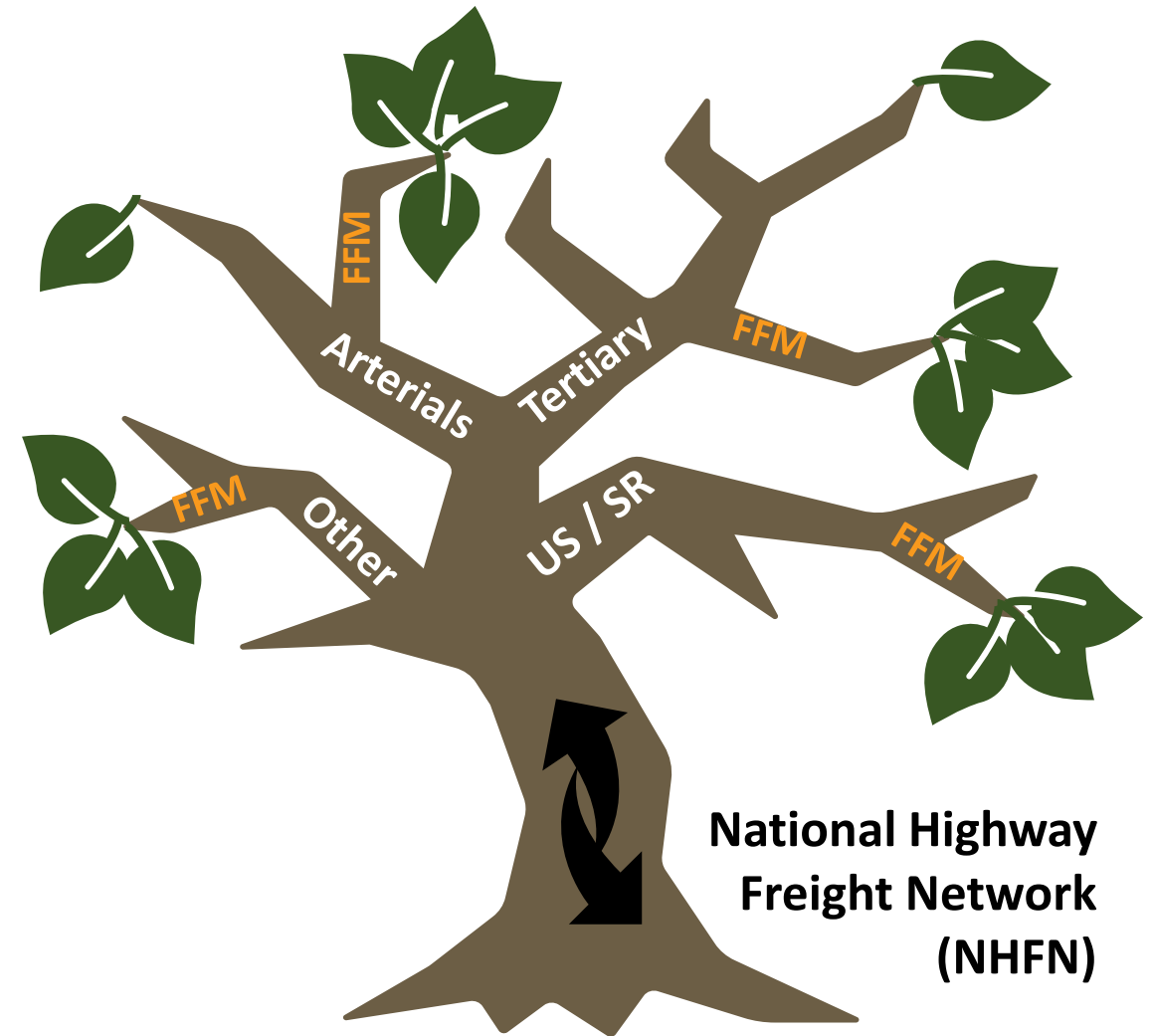
## **First/Final Mile Freight Network Update:**

1. Background and Schedule
2. Network Development Approach
  - Initial Network Review
  - Freight-Intensive Sector (FIS) Employment Review
  - Network Refinements
3. Next Steps and Sample Improvement Opportunities

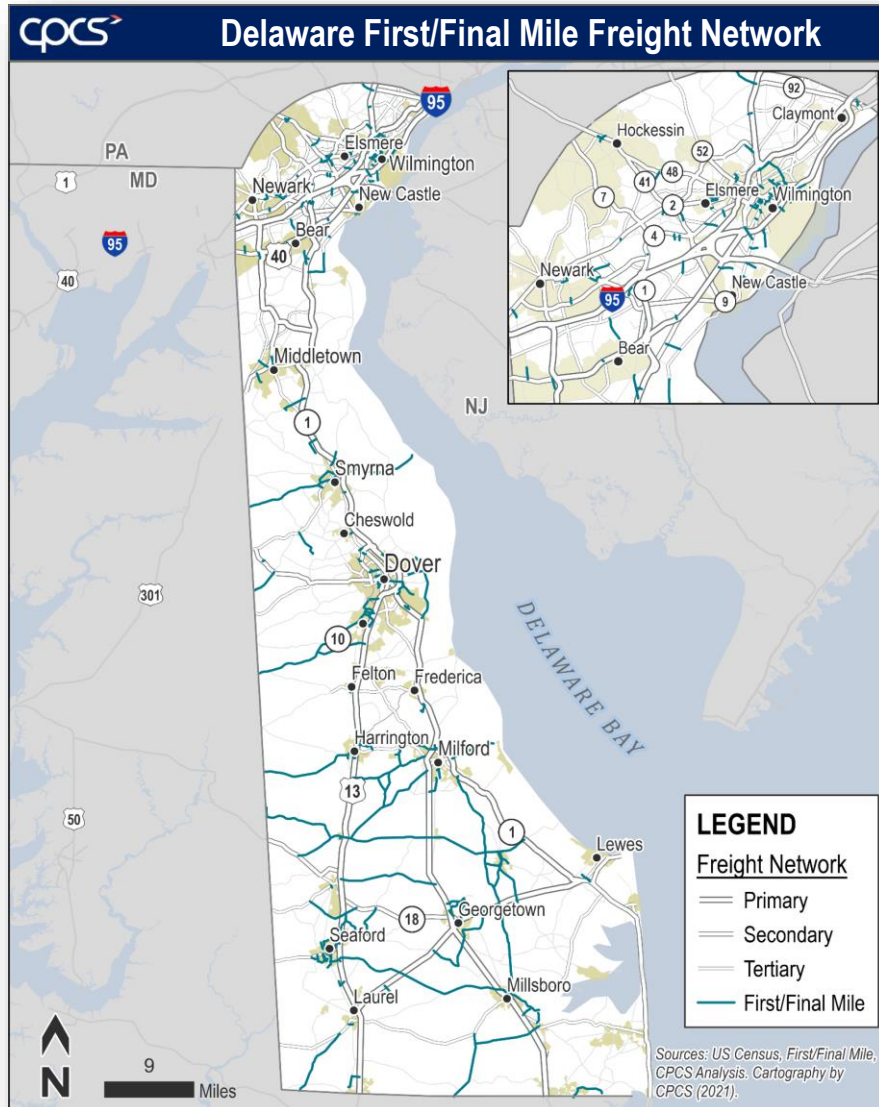
# Background

## DEFINITION: First/Final Mile (FFM) Freight Connections

- Link truck-generating or freight-handling sites with mainline travel routes
- Typically include lower functional class roadways (collectors or local roads)
- Often yield conflicts between freight traffic, other road users, and land uses
- May use routes with less opportunity (or priority) for maintenance & improvements



# Background



**Initial (2021) statewide network:**






**~294 miles** of FFM freight connections

**~76%** on collector roads; **21%** on local roads



<http://www.wilmapco.org/finalmile/>

# Background

Screening for Needs and Issues	Types of Solutions in Four “P’s”	Strategic “PMA” Framework
 <b>Institutional</b>  <b>Land Use</b>  <b>Mobility</b>  <b>Safety</b>  <b>Condition</b>	<b>Policies</b>  <b>Partnerships</b>  <b>Projects</b>  <b>Programs</b>	<b>Protect</b> freight industries from unreasonable conflicts  <b>Manage</b> conflicts in tactical and targeted ways  <b>Accommodate</b> freight needs to prevent major issues

# Update Schedule

Task	Description	Deliverables	Timeframe	
1	Current NCC FFM Network Review	Updated network criteria	AUG–OCT (2024)	
2	Updated NCC FFM Network Development	NCC updated network	OCT–DEC (2024)	NOW
3(a)	Conflicts Screening	Data and mapping overlays, NCC conflicts summary	DEC–FEB (2025)	NEXT
3(b)	Policy Review	NCC conflicts matrix, draft improvement opportunities	FEB–APR (2025)	
4	Recommendations	NCC policy and traffic recommendations matrix	APR–MAY (2025)	
5	Documentation	Draft and final reports	MAY–JUN (2025)	



# Initial Network Review

## Highway Freight Networks

 **NHFN** (National Hwy Freight Network)

 **PHFS** (Primary Highway Freight System)

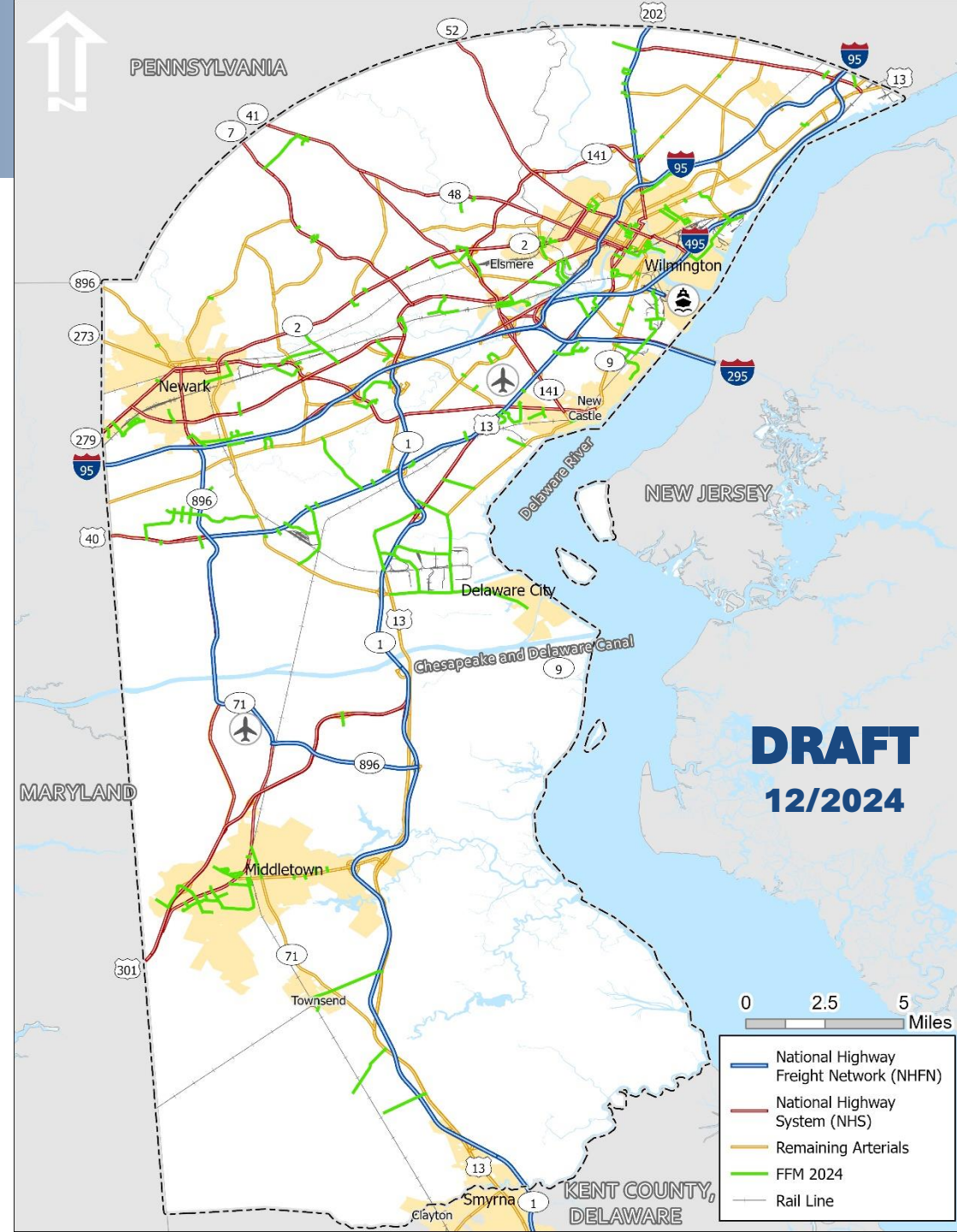
 **CUFC** (Critical Urban Freight Corridors)

 **CRFC** (Critical Rural Freight Corridors)

 **NHS** (National Hwy System)

 **Remaining Arterials** (key segments)

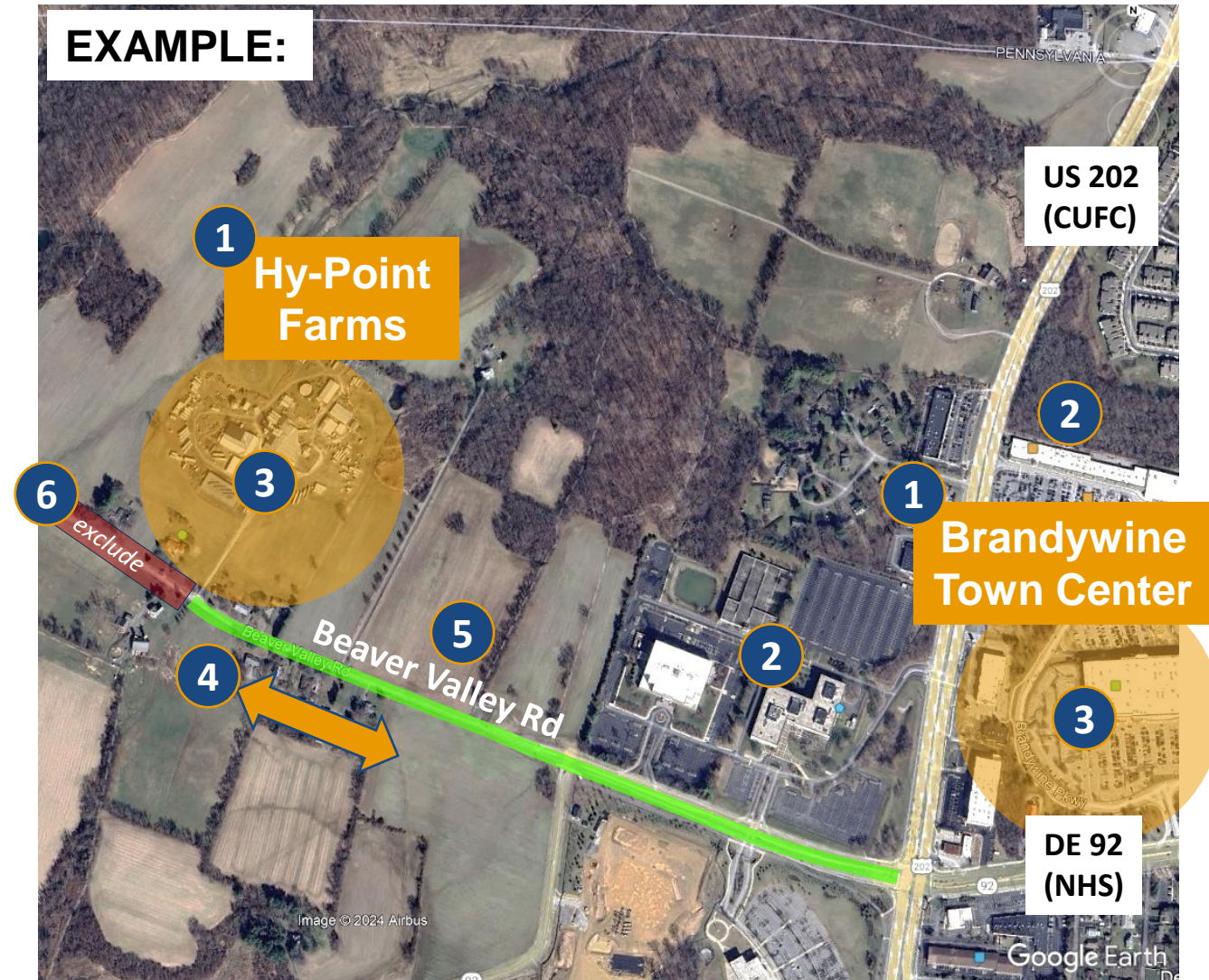
 **FFM** (First/Final Mile) Freight Routes



# Initial Network Review

## FFM Identification Process





- 1 **Sites** - FIS (Freight Intensive Sector) employment, land use, GIS/aerials
- 2 **Filters** – Employees, anomalies
- 3 **Connectivity** – GIS buffering
- 4 **Directionality** – StreetLight O-D data
- 5 **Routing** – GIS/aerials, truck routing apps, linkage to freight networks
- 6 **Other Insights** – Stakeholder reviews, new development

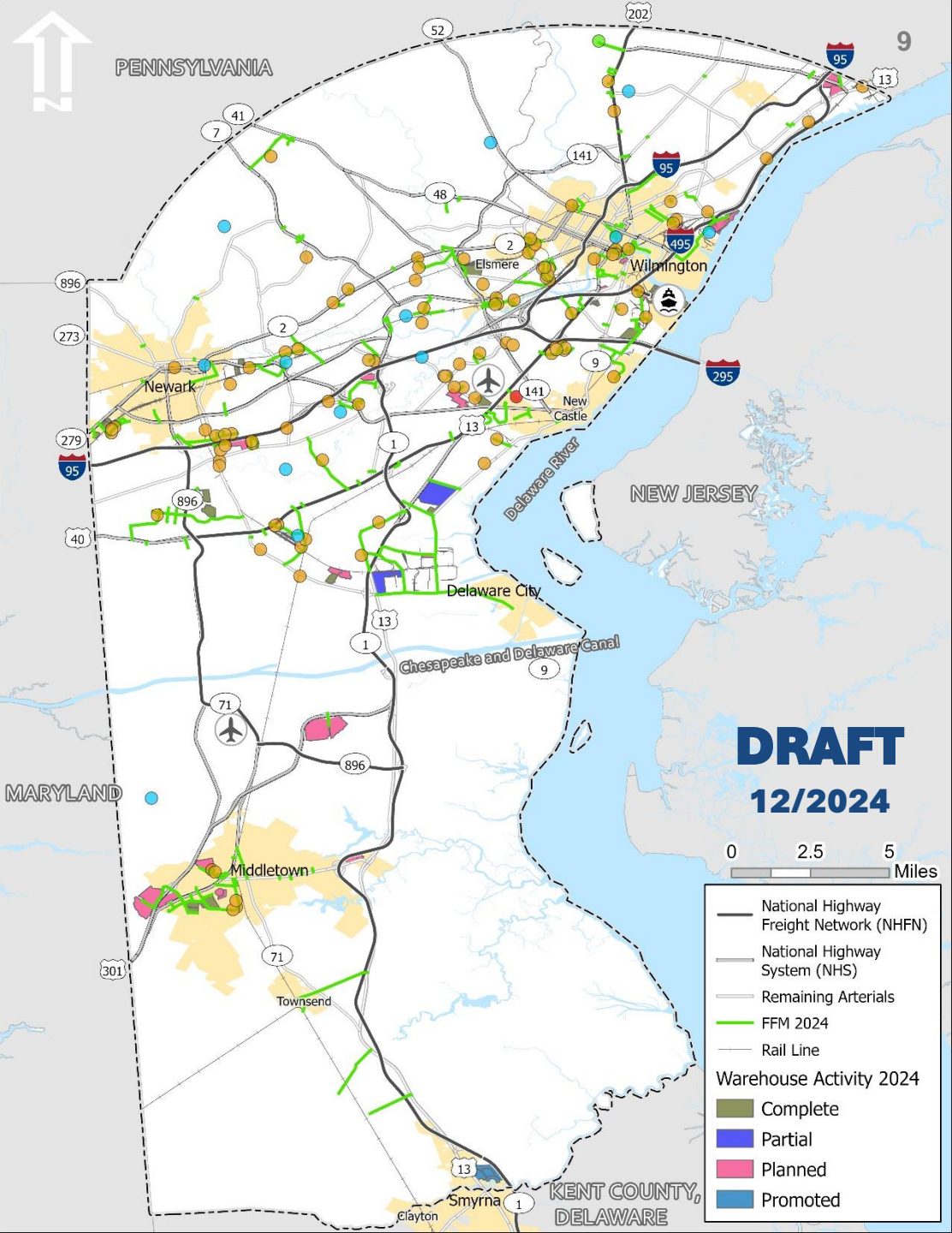




# FIS Employment

## GROUP 1: Natural Resources, Utilities, and Construction

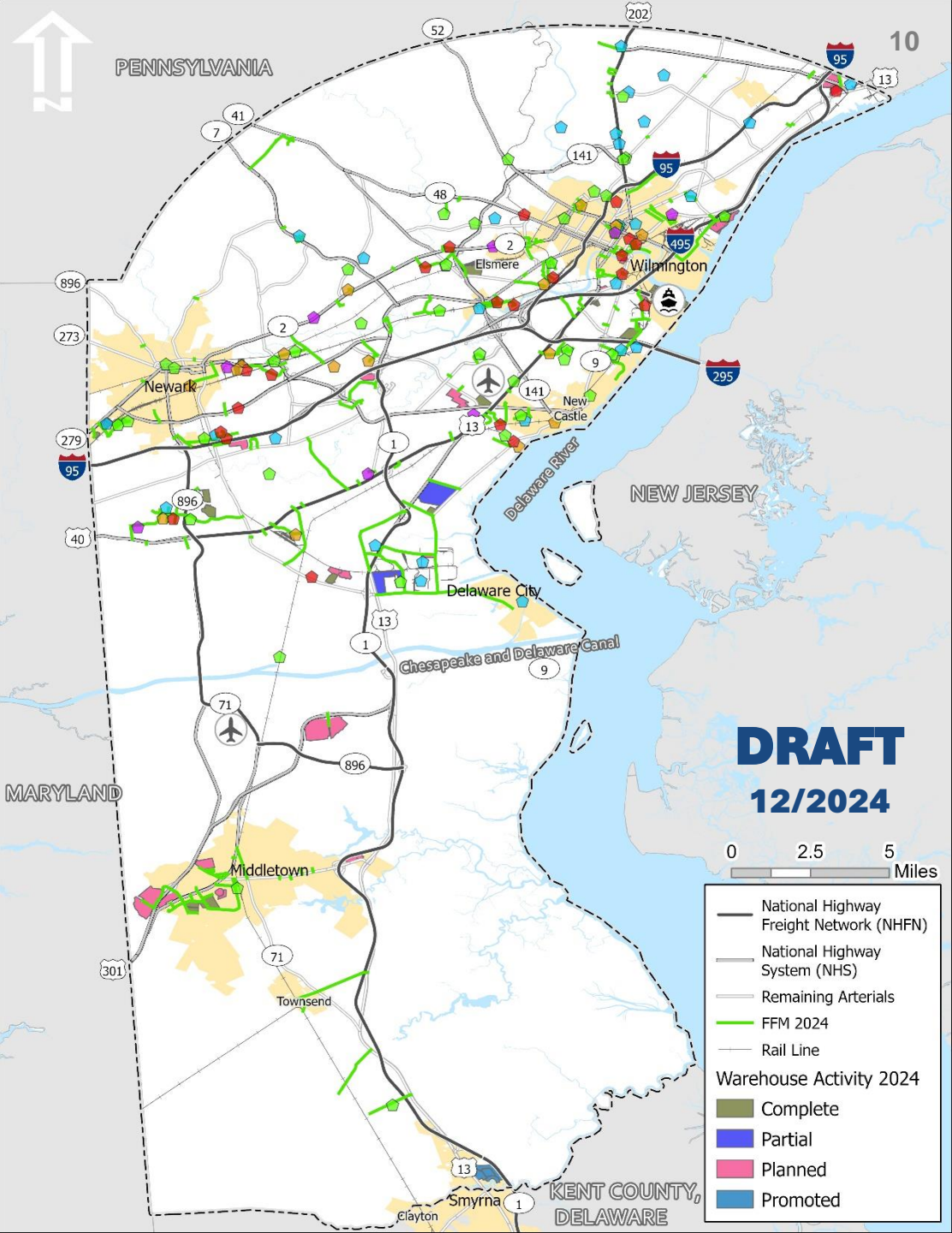
Map	NAICS	Typical FIS Industries
	11	Agriculture, Forestry
	21	Mining, Quarrying
	22	Utilities
	23	Construction



# FIS Employment

## GROUP 2: Manufacturing




Map	NAICS	Typical FIS Industries
	3111-3122	Food, Beverage, Tobacco
	3131-3231	Textiles, Apparel, Leather, Wood, Paper Prod
	3241-3262	Petroleum/Chemical Prod, Plastics, Rubber
	3271-3329	Non-metallic Mineral Prod, Metals, Fab Metals
	3331-3399	Machinery, Equipment, Vehicles, Electrical, Misc

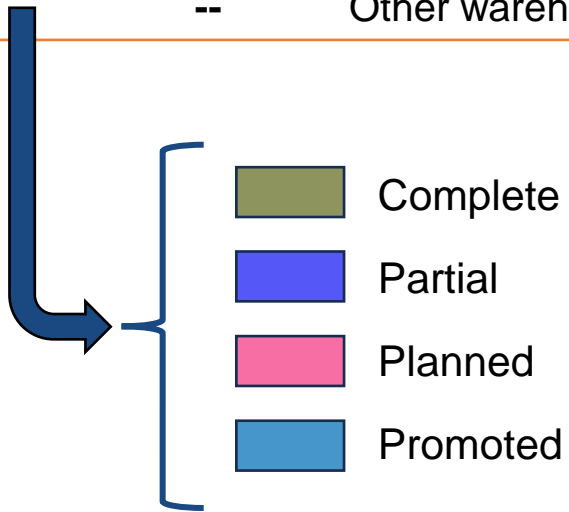




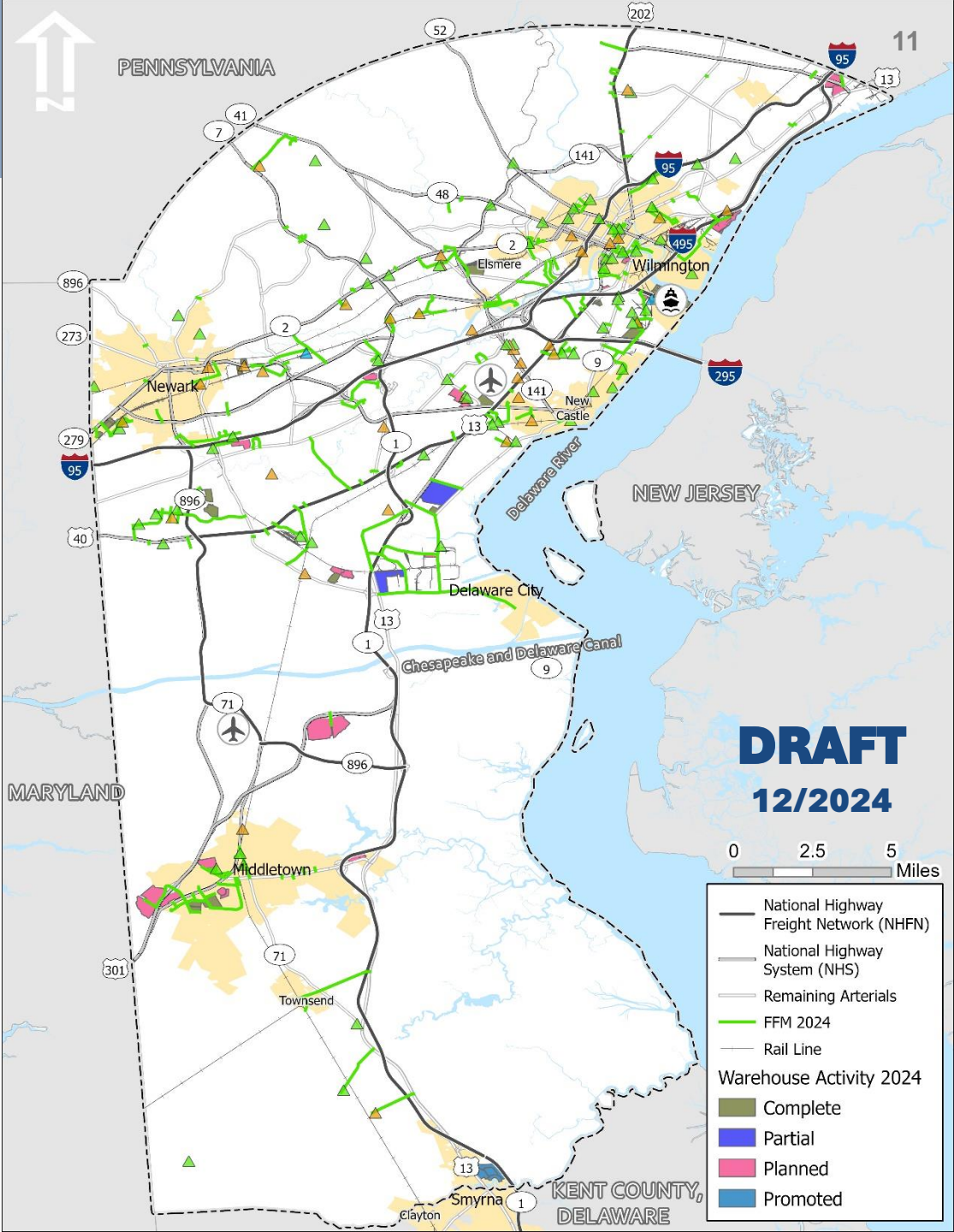
# FIS Employment

## GROUP 3: Wholesale Trade, Transportation, Warehousing

Map	NAICS	Typical FIS Industries
	42	Wholesale Trade
	48-49(*)	Transportation (*partial subset w/ freight focus)
	4931	Warehousing
	--	Other warehouse activity data






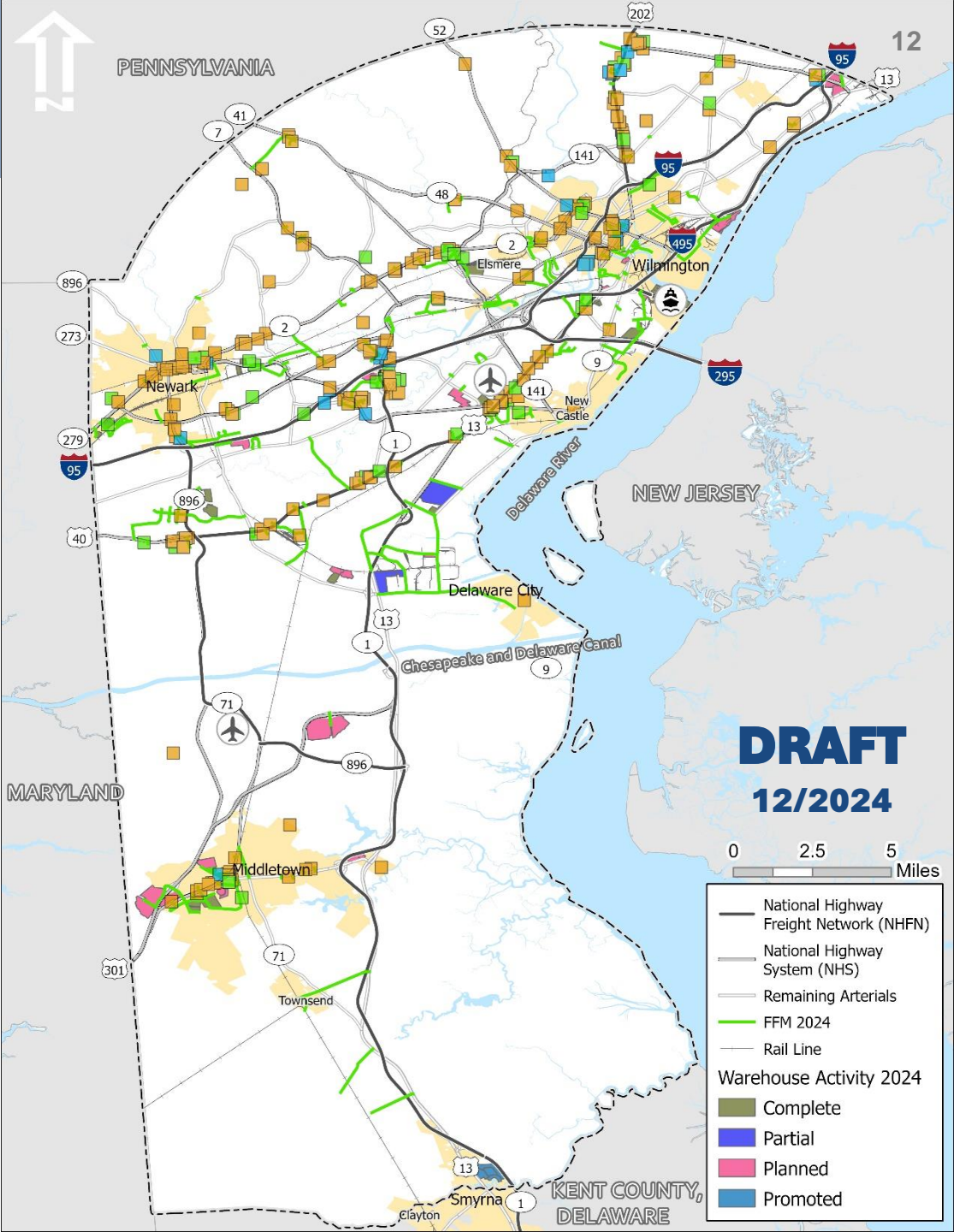
**~13.6 Million SF**  
of warehouse activity  
in various planning  
phases or construction



# FIS Employment

## GROUP 4: Retail Trade, Accommodation, and Food Services

Map	NAICS	Typical FIS Industries
	44-45	Retail Trade
	7211-7213	Accommodation
	7223-7225	Food Services



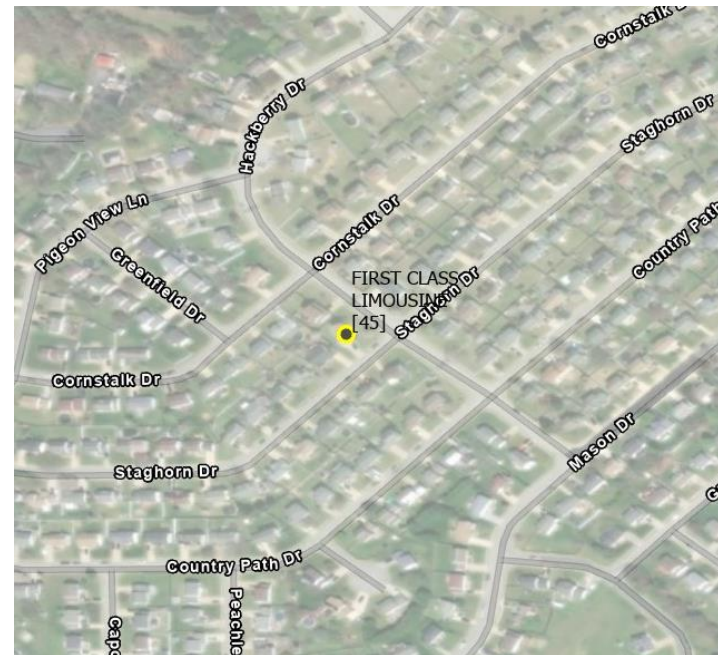


## Employment Data Issues

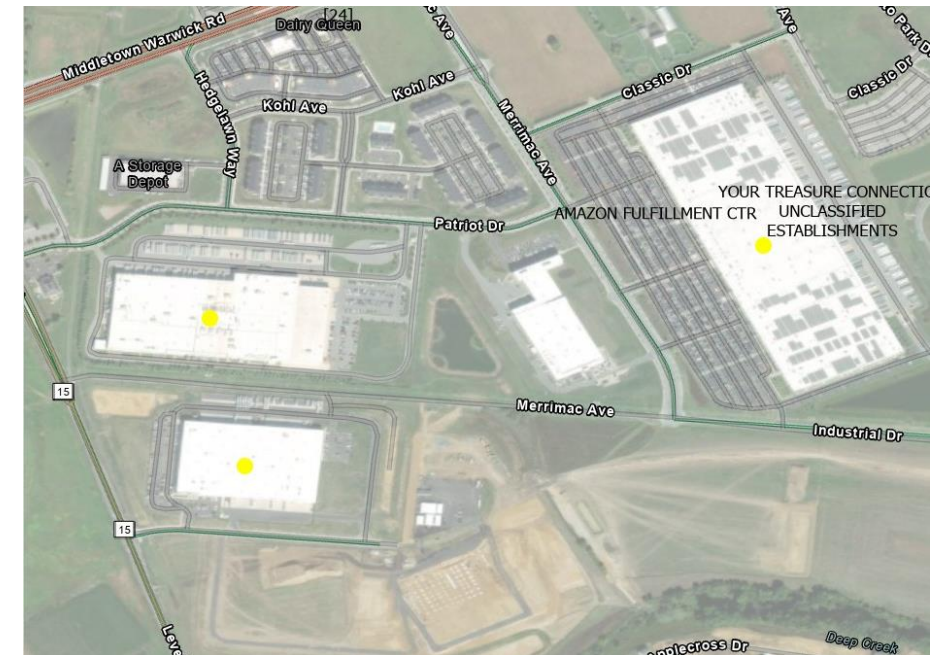
*No Location*



*Administrative Location*



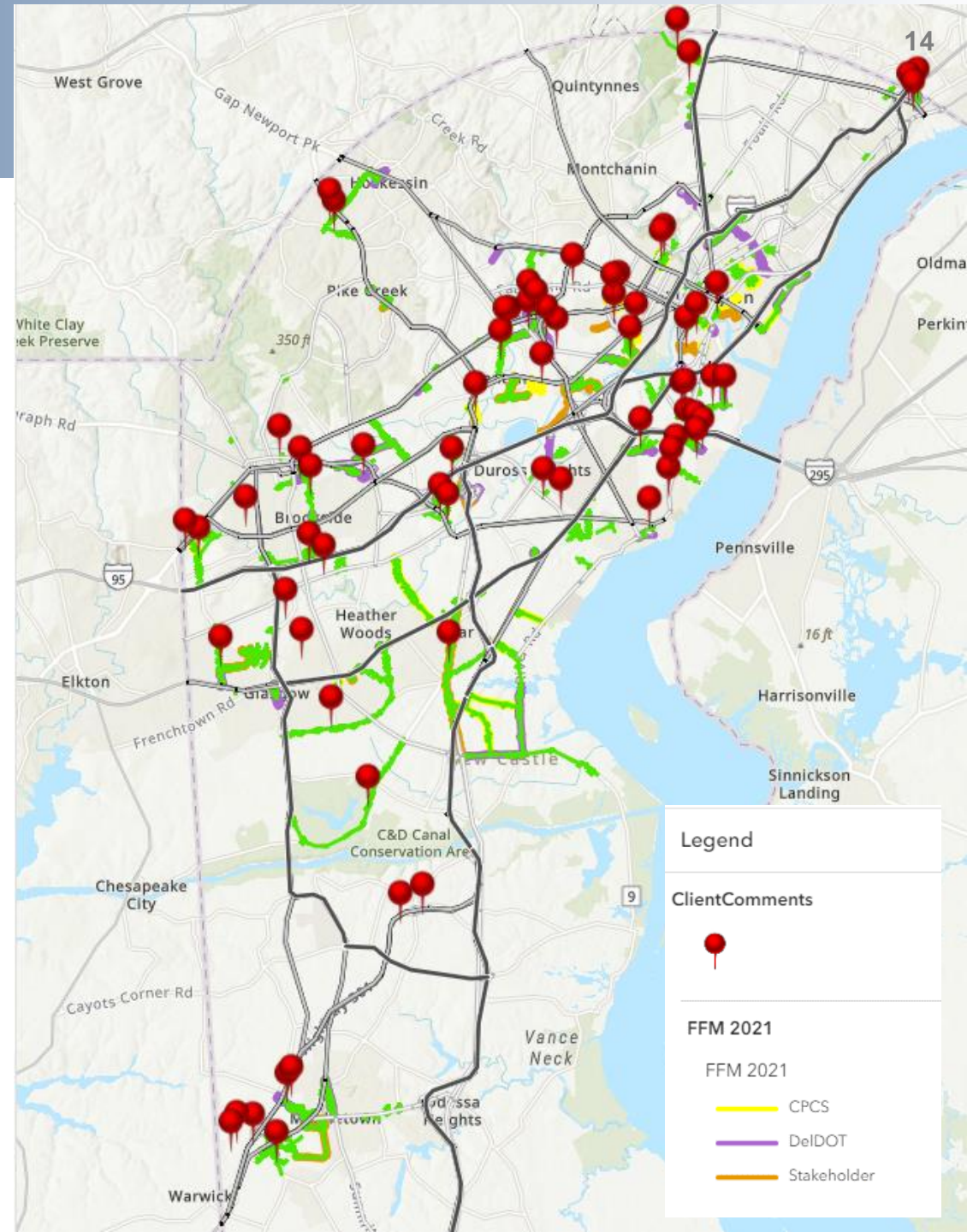
*Not Captured (new or "unclassified")*



# Network Refinements

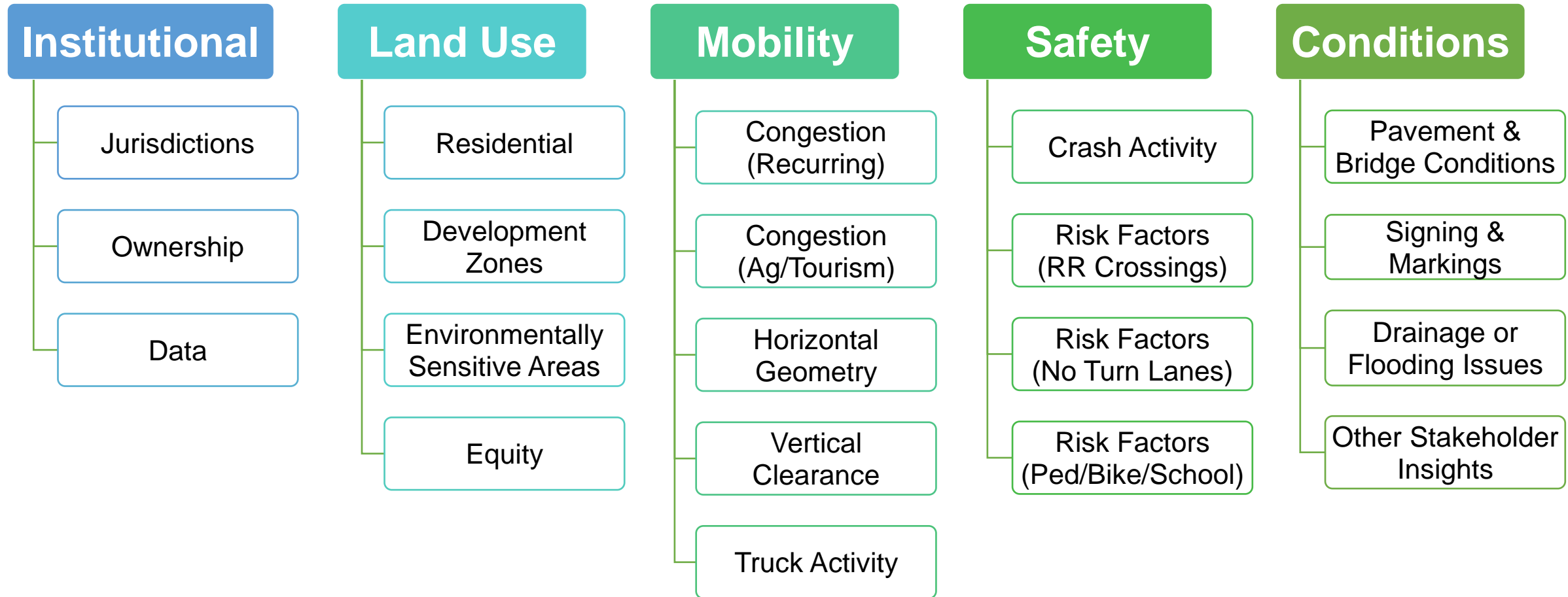
## Ground-Truthing

- Individual corridor reviews
- Prior (2021) network comparison
- Truck activity (e.g., trips, restrictions)
- Agency / stakeholder input
- Field view insights





## Conflict Screening



## Immediate Next Steps



*Visit our display  
table and survey station  
during the break!!*

## Upcoming in 2025

- FFM Freight Network Tiers
  - *TIER 1 – FFM Freight Route*
  - *TIER 2 – FFM Freight Stub*
  - *TIER 3 – FFM Future Potential*
- Conflict Screening
- Policy and Plan Reviews
- Protect-Manage-Accommodate (PMA) Framework
- Improvement Opportunities



# Improvement Opportunities

## Sears Boulevard Extension

- Project #T202209902
- Adds new freight connection

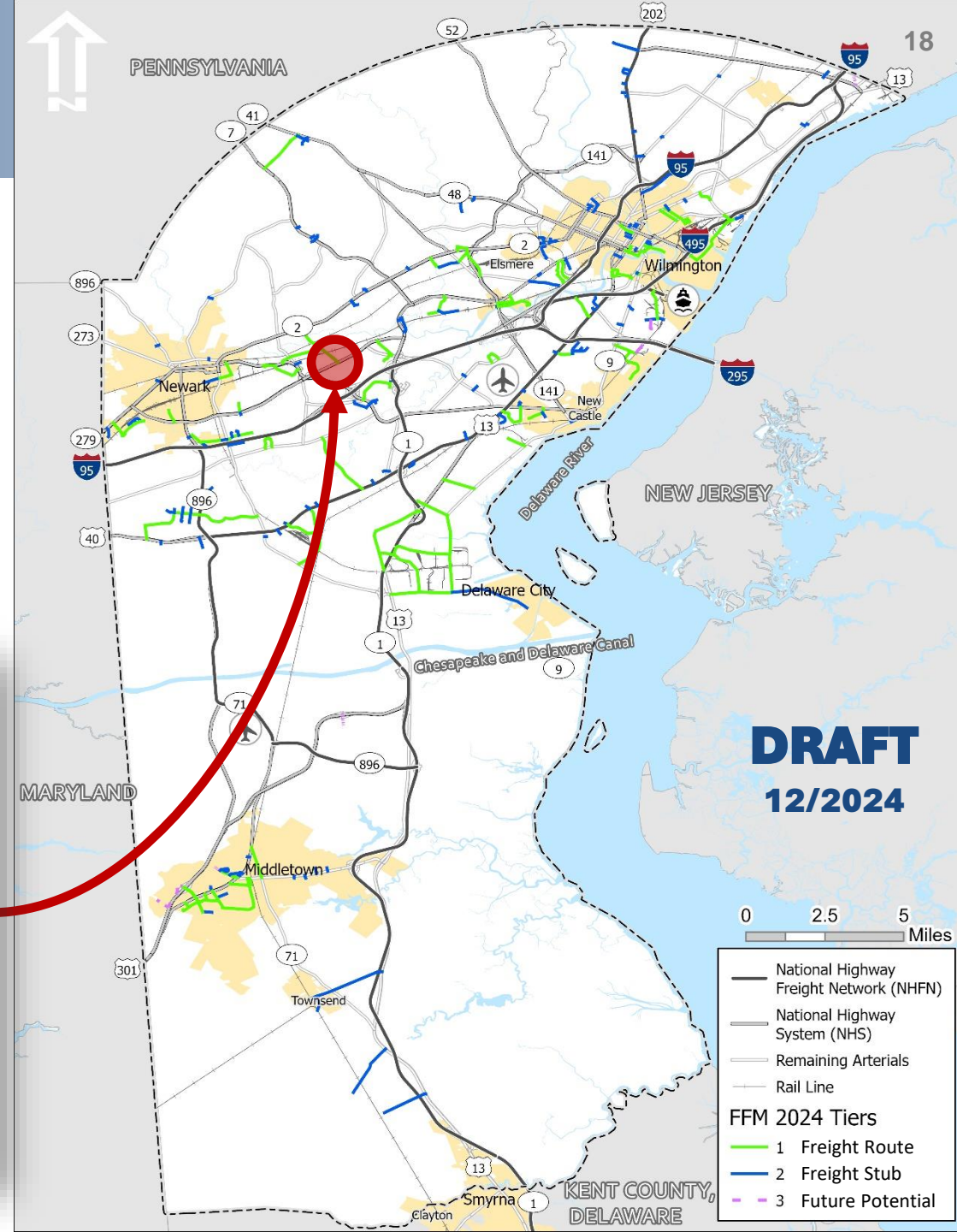
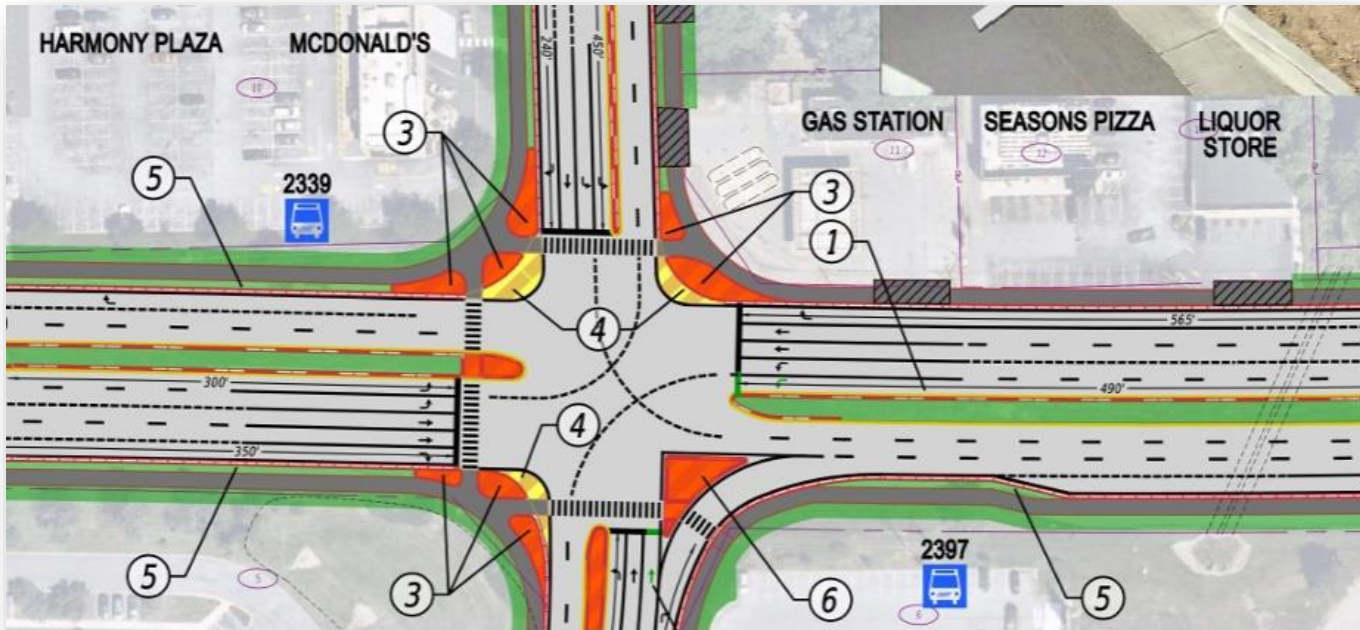




# Improvement Opportunities

## SR 4 and Harmony Road Intersection

- Project #T202111601
- Creates protected intersection w/ truck aprons

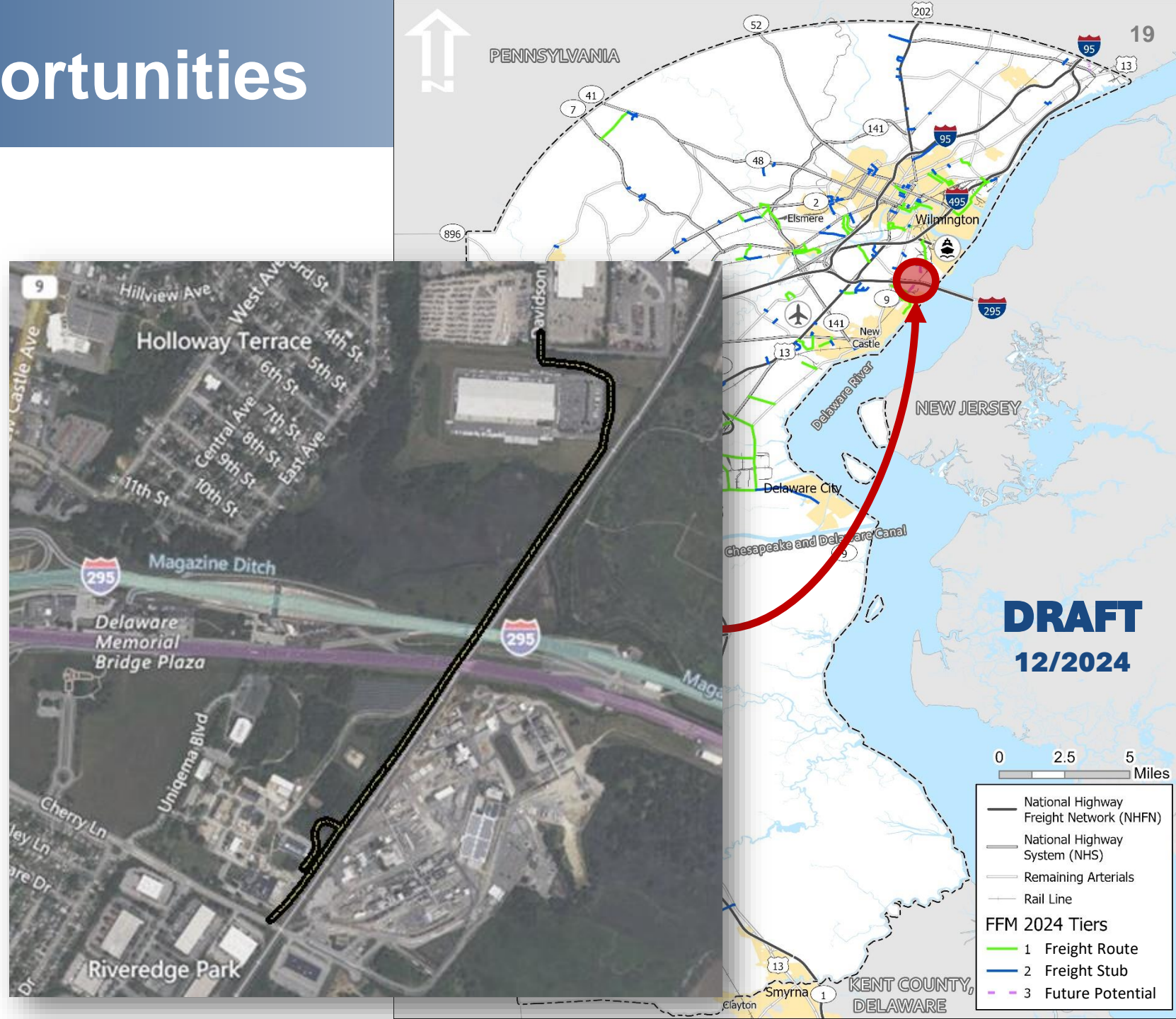




# Improvement Opportunities

## Pigeon Point Extension

- 2021 WILMAPCO Port Circulation Study alternative
- New connection from Davidson Ln to Cherry Ln





# Thank You!

**WEBSITE / SIGN UP FOR UPDATES:**

**<http://www.wilmapco.org/finalmile/>**

## **CONTACTS:**

**WILMAPCO:**

*Dan Blevins*

[dblevins@wilmapco.org](mailto:dblevins@wilmapco.org)

**New Castle County:**

*Matthew Rogers*

[matthew.rogers@newcastlede.gov](mailto:matthew.rogers@newcastlede.gov)

**DeIDOT:**

*Cooper Bowers*

[Cooper.Bowers@delaware.gov](mailto:Cooper.Bowers@delaware.gov)

**WRA:**

*Andrea Trabelsi*

[atrabelsi@wrallp.com](mailto:atrabelsi@wrallp.com)

**WRA:**

*Chad Reese*

[creese@wrallp.com](mailto:creese@wrallp.com)