

Impact/Benefit Analysis of Truck Access Improvements in the Port of Wilmington Area

February 15, 2021



Agenda

- Introductions
- Project Overview
- Purpose of the Study
- Roles of the Advisory Committee
- Existing Conditions
- Open Discussion on Ideas
- Public Workshop Discussion
- Schedule and Next Steps

Advisory Committee Representation

- Elected Officials
- Local Government
- Community Representatives
- Business and Industry Representatives
- WILMAPCO
- DeIDOT
- Century Engineering
- Duffield Associates

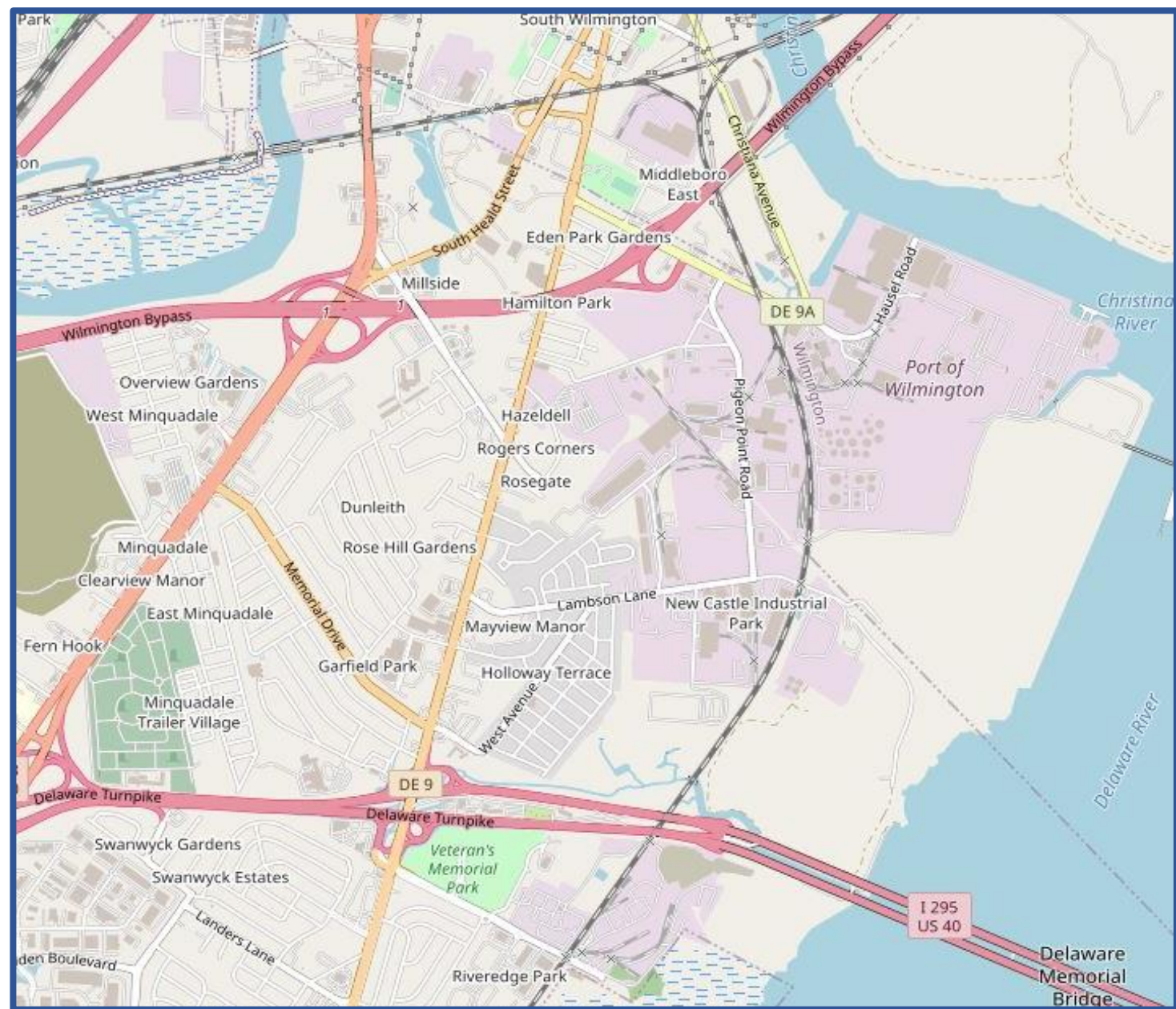
Self Introductions

- Sen. Darius Brown (State Senator)
- Rep. Franklin Cooke (State Representative)
- Councilperson Jea Street (New Castle County Council)
- Phillip McBride (New Castle County)
- Diana Dixon (Southbridge Civic Association)
- Sandra Smithers (NC Prevention Coalition)
- Jerry Collins (Holloway Terrace Civic Association)
- Sam Latham (Community at large)
- Kathryn Bradley (Gulftainer)
- Lee Derrickson (DMTA)
- Drew Boyce (Century)
- Sonia Marichic-Goudy (Century)
- Ted Foglietta (Century)
- Jeff Bross (Duffield)
- James Taylor (Duffield)
- Dan Blevins (WILMAPCO)

Advisory Committee Roles

- Provide Input to the Study
- Help the Team Understand the Local Conditions
- Be a Voice for Those you Represent
- Help Communicate the Project Goals
- Attend the AC Meeting
- Attend the Public Workshops
- Help with Community Outreach

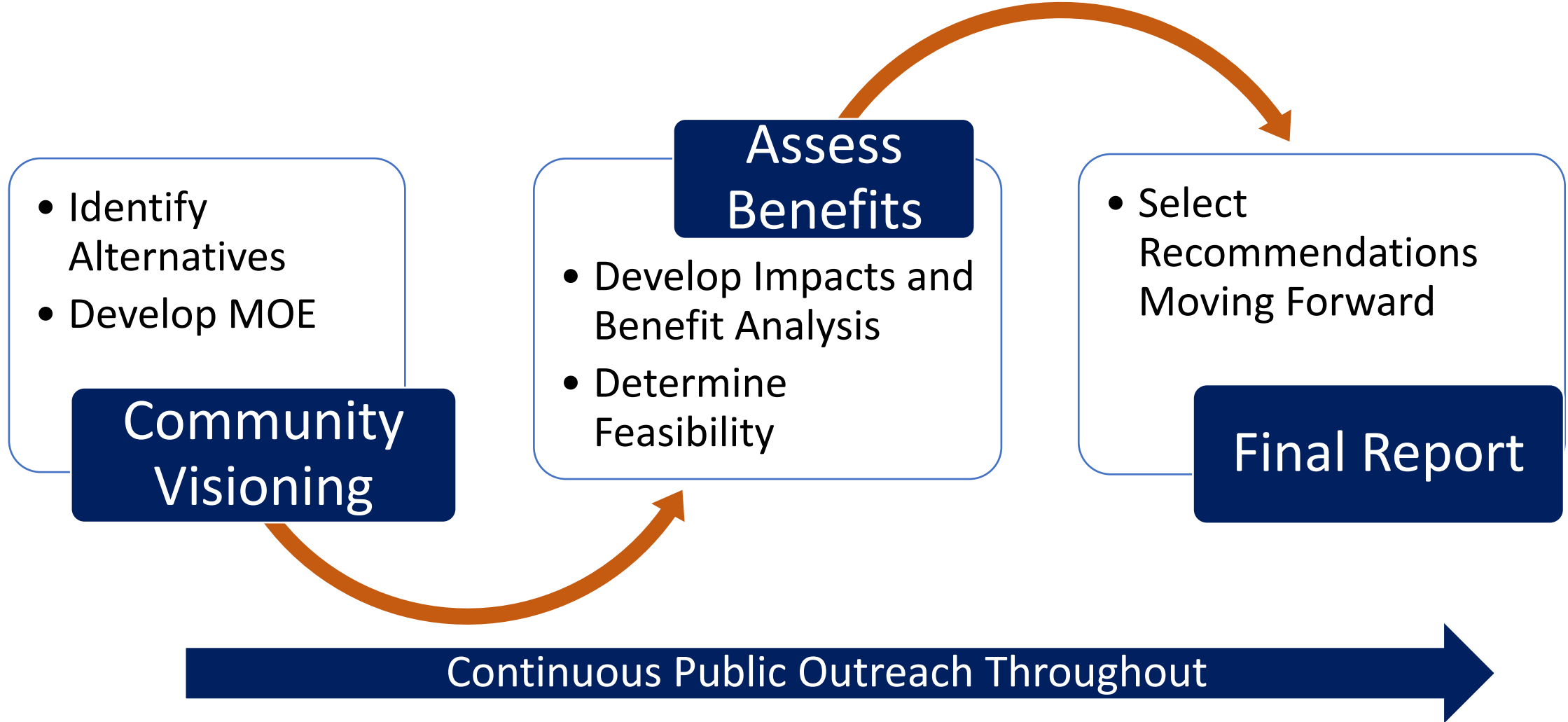
Study Area



Project Purpose

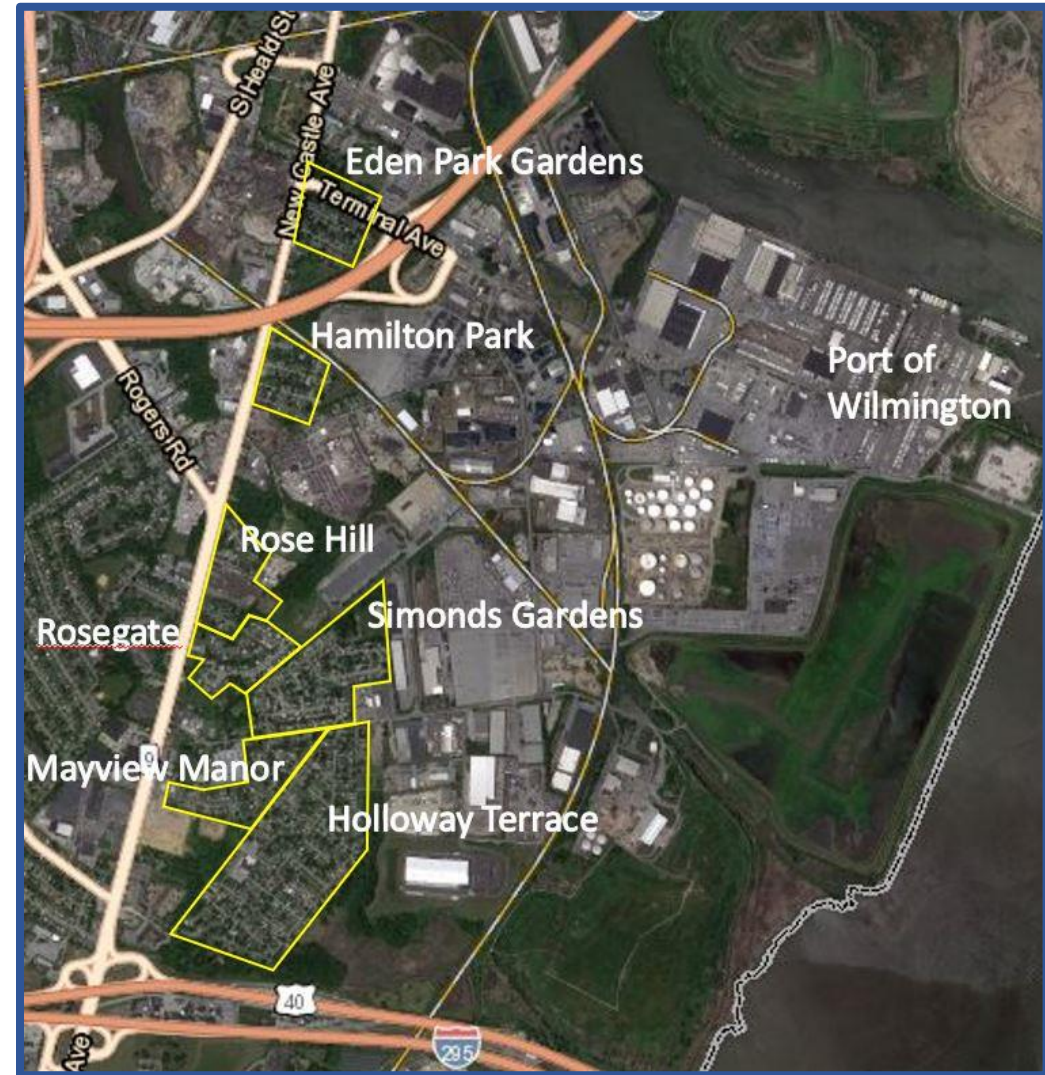
- Assemble recommendations from previous efforts, as well as new ideas and refine them into a series of possible improvements to help truck circulation in and around the Port of Wilmington.
- Assess the recommendations using the identified measures of effectiveness to determine feasibility, impact to the efficiency of the transportation system, ability to confine truck traffic to the industrial areas and major roadways, and consistency with the previous planning efforts.
- Establish future capital projects in the Regional Transportation Plan and the Capital Transportation Program.

Work Plan



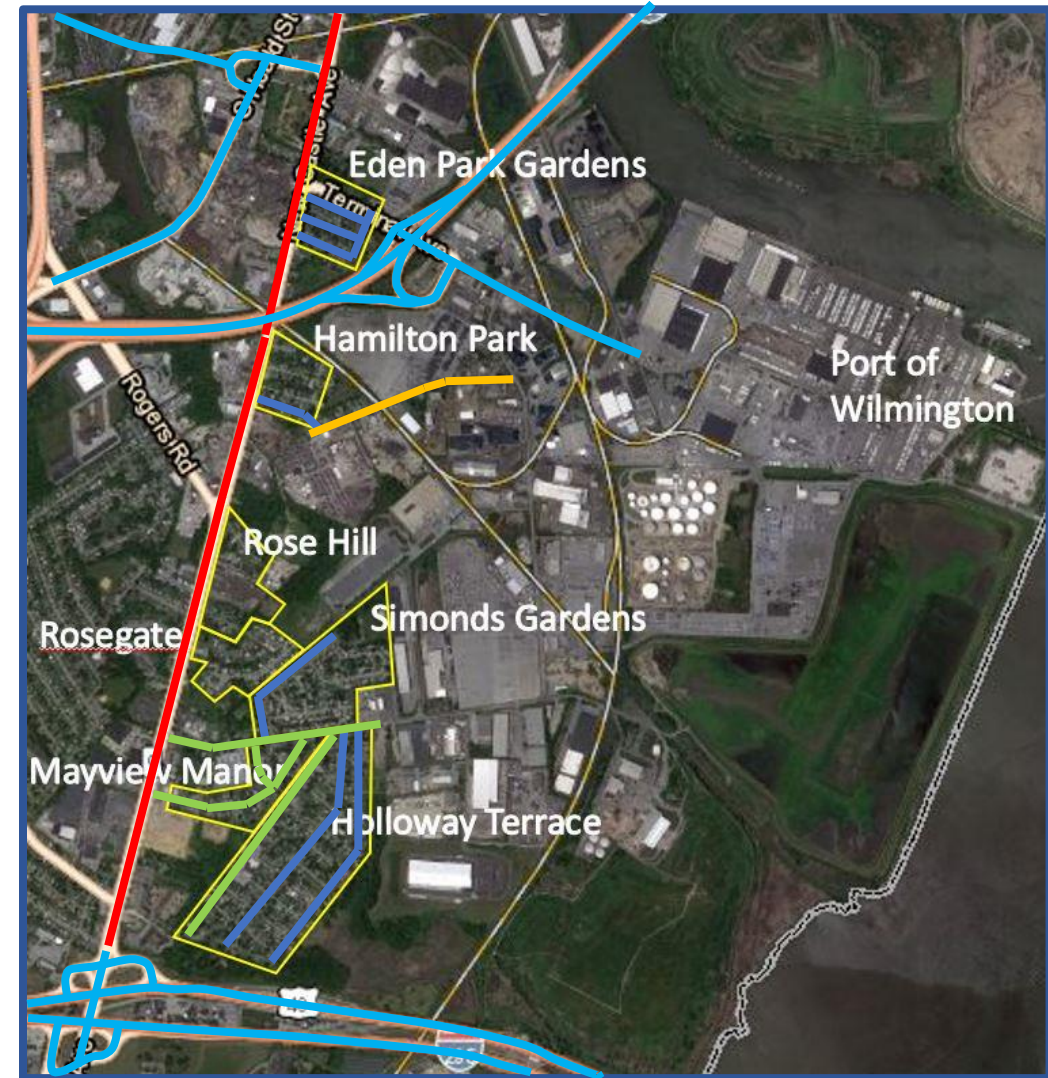
Existing Conditions

- Limited Access Points
- Current Growth
- Anticipated Growth
- Communities Impacted by Truck Traffic
- Previous Planning Efforts



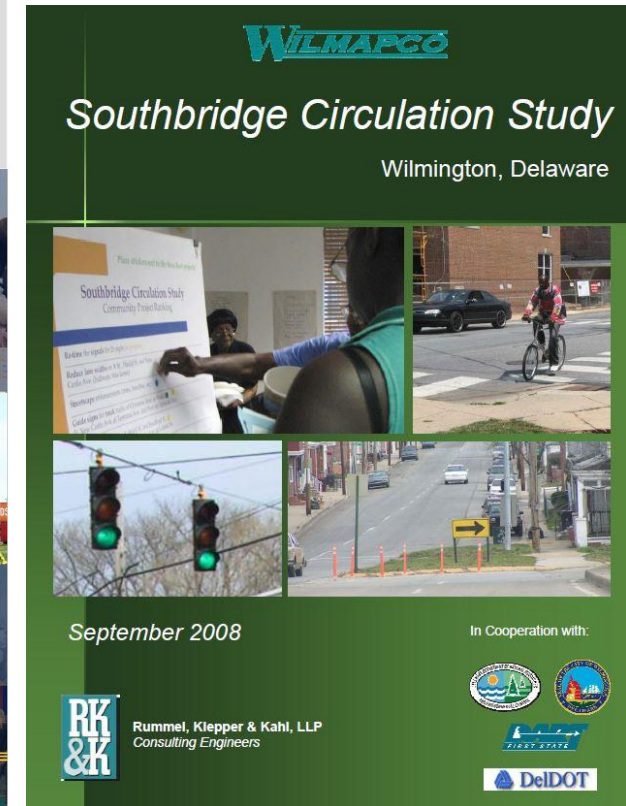
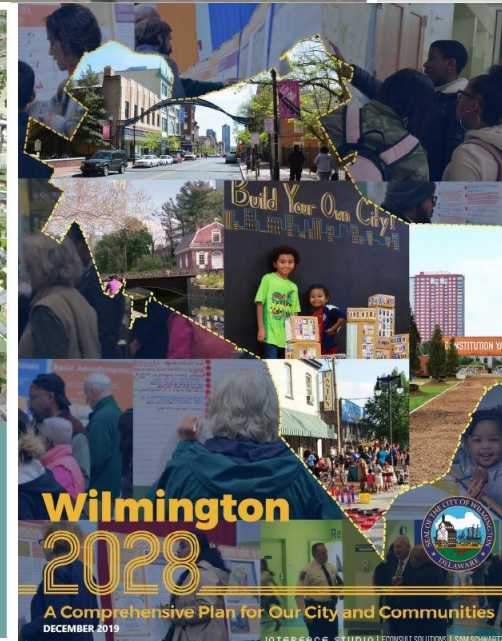
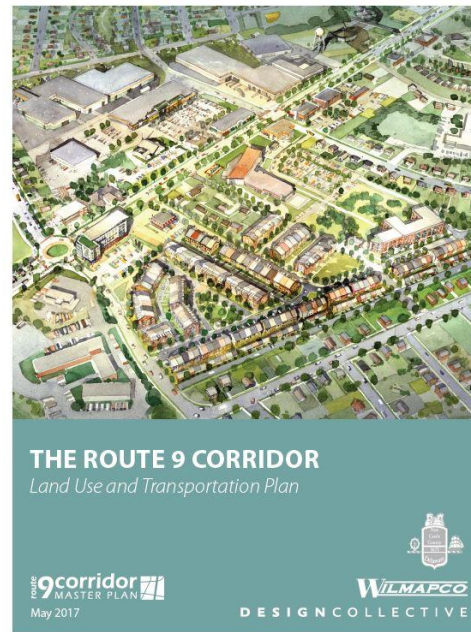
Existing Conditions

- Existing Truck Traffic Restrictions
 - No Trucks Over 2 axle
 - No Trucks Over 5,000 lbs
 - No Engine Compression Brakes
- Corridors With Less Trucks
- Remaining Roadway Network



Alternatives

- History
- Past Planning Efforts
- Maintaining the Vision
- Brainstorming
- Building Consensus



Alternatives

New Ideas

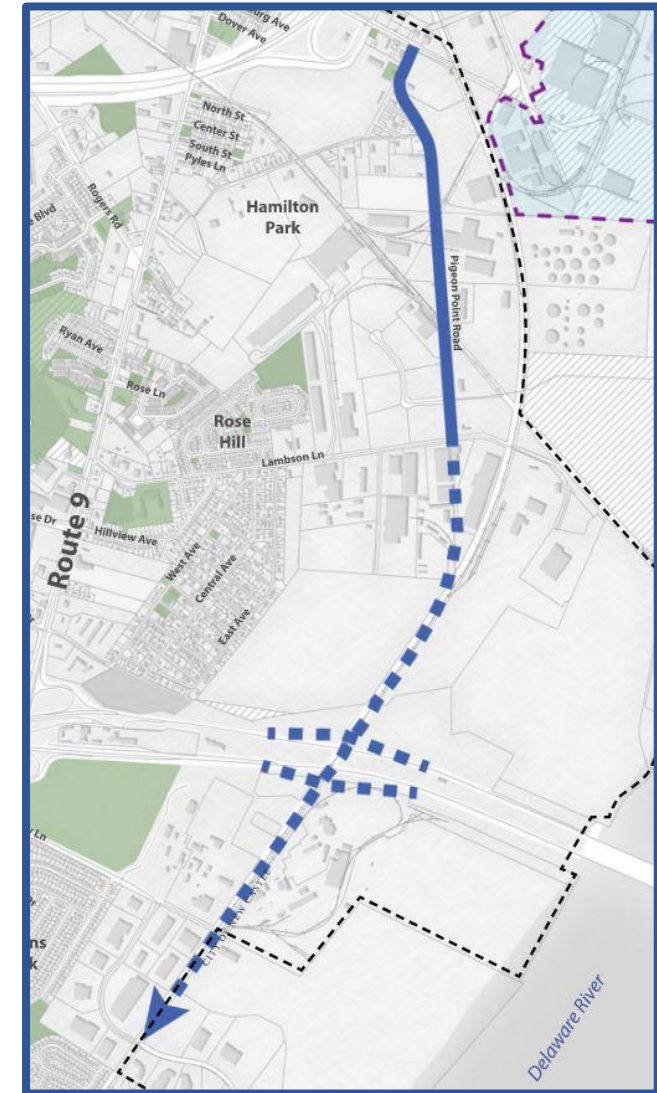
- Past Plans
- Local Governments
- Community Engagement
- Business Stakeholders
- Industry Organizations
- Elected Officials



Alternatives

Pigeon Point Road Extended

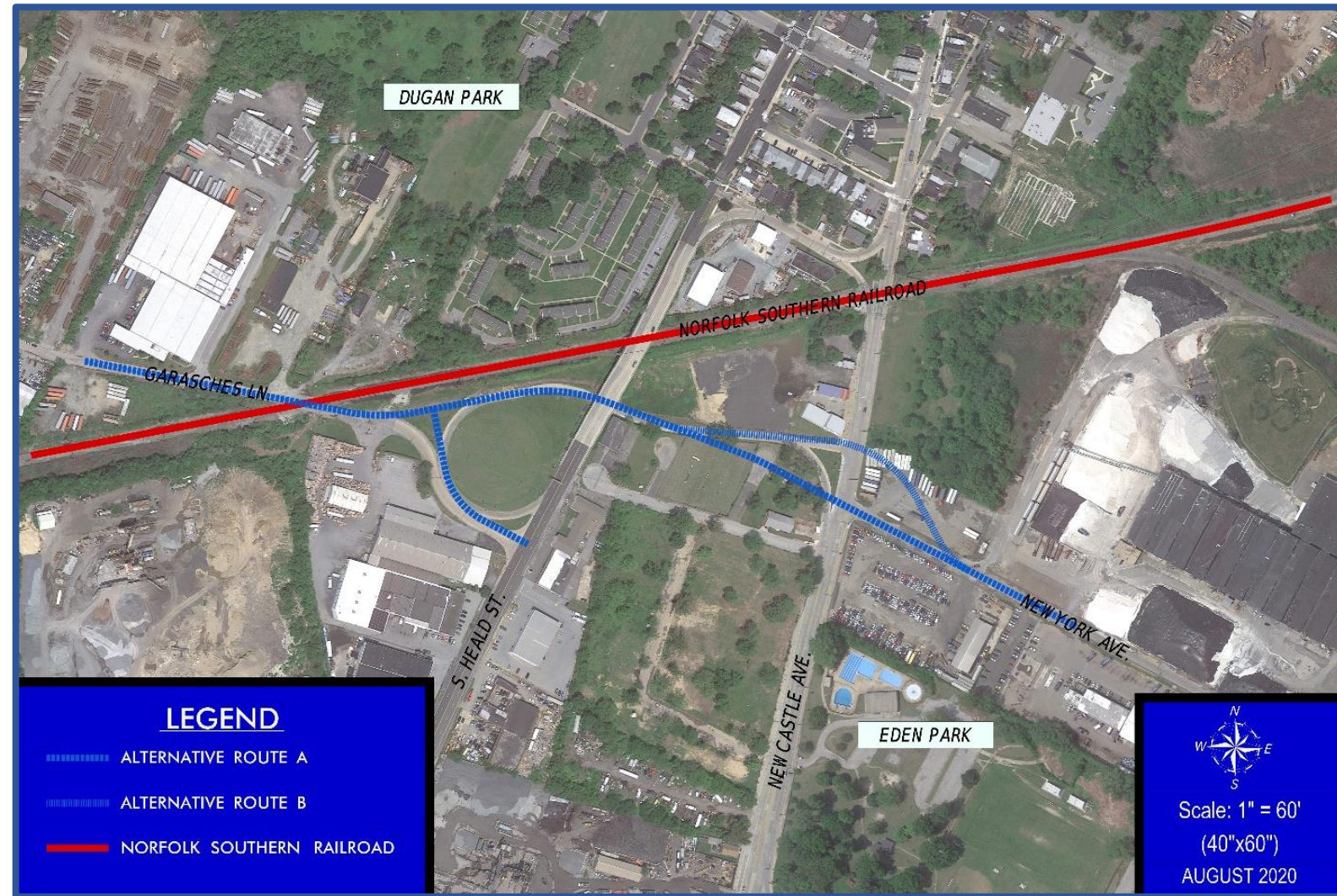
- **Possible Benefits**
 - Alternate Access to the Port Area
 - Direct Connection to I-295
 - Diverts Trips From Terminal Ave and Route 9
 - Links Industrial Areas to the South of I-295
 - Increased Development Potential
- **Possible Impacts**
 - Environmental
 - Utility
 - Railroad
 - DRBA Coordination



Alternatives

Garasches Lane

- Direct Connection Between City of Wilmington Industrial Area and Port Area
- Potential Access to Heald Street
- Potential to Divert Trips from Southbridge
- Links Industrial Areas on Both Sides of Route 9
- Opportunities with Current DelDOT Bridge Project



Alternatives

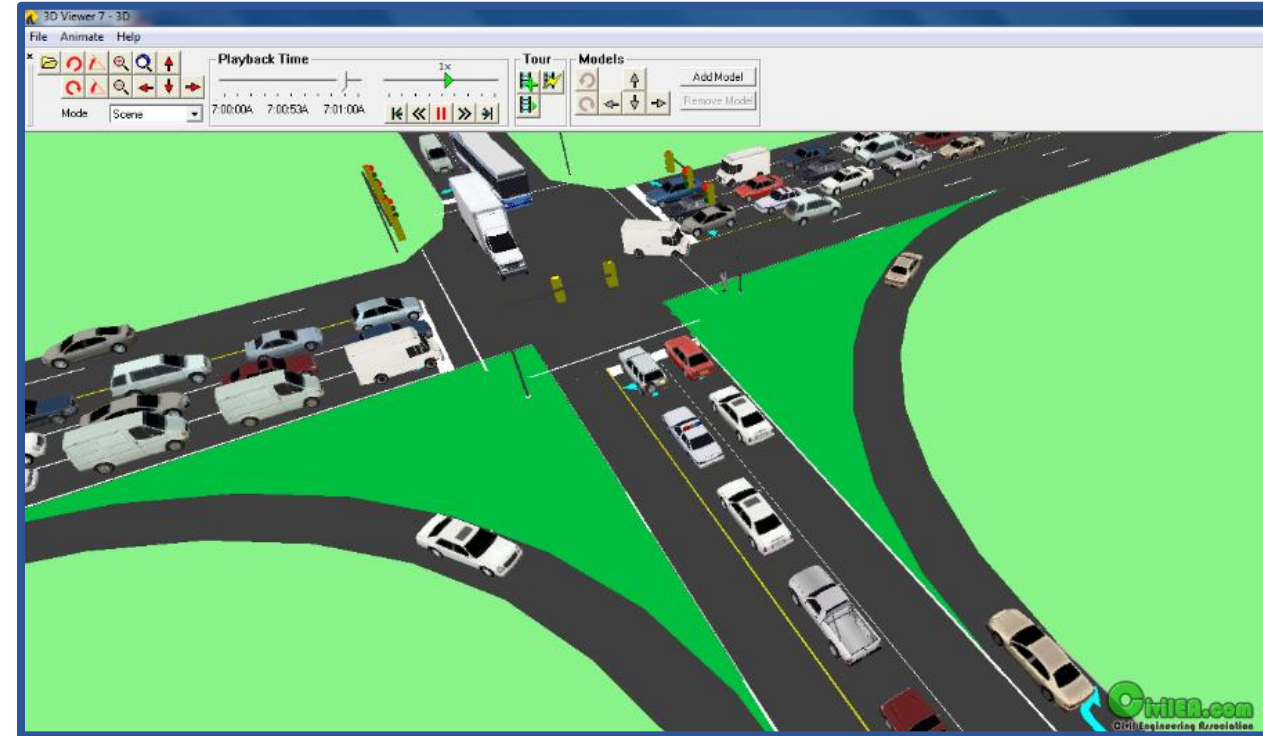
Pyles Lane

- State Relocation of Residential Properties
- Possible Connection to Route 9
- Diverts Trips from Terminal Ave
- Adds Additional Truck Access Point to Route 9 Corridor



Measures of Effectiveness

- Environmental Impacts/Air Quality
- Utility and Railroad
- Right-of-Way
- Cost Estimates
- Technical Analysis of Traffic Conditions
 - Level of Service
 - Travel Time
 - Truck Diversions Within the Network
 - Truck Volumes



Open Discussion

Public Workshop

- Format
- Time
- Duration
- Advertise
- Participation
- Meaningful Engagement

Schedule



Thank You!

