

**TECHNICAL ADVISORY COMMITTEE AND  
AIR QUALITY SUBCOMMITTEE MEETING  
December 20, 2018**

A joint meeting of the Technical Advisory Committee (TAC) and Air Quality Subcommittee (AQS) was held on Thursday, December 20, 2018, at WILMAPCO, The Tower at STAR Campus, 100 Discovery Boulevard, Suite 800, Newark, DE 19713.

**1. CALL TO ORDER:** Mr. Dahlstrom, TAC Chairperson, brought the TAC meeting to order at 10:00 a.m.

**2. TAC Members present:**

Ian Beam, Maryland Department of Transportation  
David Dahlstrom, Maryland Department of Planning  
Tony Di Giacomo, Cecil County Land Use and Development Services  
Mike Fortner, City of Newark Planning and Development Department  
Gwineth Kaminsky, City of Wilmington Planning and Development  
David Mathe, Delaware Division of Small Business, Development, and Tourism  
Stephen Miller, Maryland State Highway Administration  
Jeanne Minner, Town of Elkton  
Brian Mitchell, City of Wilmington Department of Public Works  
Molla Sarros, Maryland Department of the Environment (via conference call)  
Jolyon Shelton, Delaware Department of Natural Resources and Environmental Control  
Catherine Smith, Delaware Transit Corporation  
Joshua Thomas, Delaware Department of Transportation

**TAC Ex-Officio Members present:**

Lindsay Donnellon, U.S. Federal Highway Administration (via conference call)

**TAC Members absent:**

Delaware Office of State Planning Coordination Delaware River and Bay Authority  
Maryland Transit Administration  
New Castle County Department of Land Use

**TAC Ex-Officio Members absent:**

Amtrak  
Diamond State Port Corporation  
U.S. Environmental Protection Agency  
U.S. Federal Transit Administration

**AQS Members Present**

Kevin Black, FHWA (via conference call)  
Tony Di Giacomo, Cecil County Land Use and Development Services  
Lindsay Donnellon, U.S. Federal Highway Administration (via conference call)  
Jolyon Shelton, DNREC  
Catherine Smith, Delaware Transit Corporation  
Molla Sarros, Maryland Department of the Environment (via conference call)  
Colleen Turner, MDOT (via conference call)

**Guests and Invitees:**

Benjamin Allen, MDOT SHA  
Scott Flanigan, Cecil County Department of Public Works  
Kevin Racine, Citizen

**Staff:**

Dan Blevins, Principal Planner  
Janet Butler, Administrative Assistant  
Heather Dunigan, Principal Planner  
Dave Gula, Principal Planner  
Jacob Thompson, Transportation Planner  
Tigist Zegeye, Executive Director (via conference call)

Minutes prepared by: Janet Butler

**3. MINUTES**

Correction to the November 15, 2018 minutes: Ian Beam, MDOT, attended the TAC/AQS meeting via conference call.

**ACTION:** On motion by Mr. DiGiacomo and seconded by Ms. Kaminsky, the TAC approved the November 15, 2018 minutes with correction.

Motion passed. **(12-20-18 - 01)**

**4. Subcommittee Updates - None**

**5. Public Comments - None**

**ACTION ITEMS:**

**6. To recommend amendment of the FY 2019-2022 Transportation Improvement Program (TIP)**

Ms. Dunigan said this amendment would fund replacement of the Cecil County Bridge CE-0042, Mechanics Valley Road over CSX Railroad, which is in poor condition and is functionally obsolete, with a new modern bridge on a new alignment that will also improve the intersection of Mechanics Valley Road and Bouchelle Road. The funding is for construction dollars.

**ACTION:** On motion by Mr. Beam and seconded by Mr. DiGiacomo, the TAC recommended amendment of the FY 2019-2022 TIP to add the Mechanics Valley Road Bridge CE0042 over CSX Replacement Project.

Motion passed. **(12-20-18 - 02)**

**7. To recommend release of the Draft 2050 Regional Transportation Plan (RTP) and FY 2020-2023 TIP Air Quality Conformity Determination for Public Comment**

Ms. Zegeye said that Cecil County Air Quality Conformity Determination shows that VOC and NOX are well under the budget. The New Castle County document shows that VOC, NOX, and PM2.5 Direct and PM2.5 Indirect are also well under budget. The public comment period will be January 14-March 6, 2019, and the document will be available at the WILMAPCO "Our Town" event, on Thursday, February 7, 2019, from 4:00 to 7:00 p.m. at the STAR Campus Atrium.

Mr. Shelton asked regarding the draft text that was highlighted in yellow in the Cecil County document where the WILMAPCO Council formally adopted the TIP and RTP on March 14, 2019, if this draft text should also be added to the New Castle County document. Ms. Zegeye replied yes the text would be added to the New Castle County document.

**ACTION:** On motion by Ms. Kaminsky and seconded by Ms. Minner, the TAC recommended release of the Air Quality Conformity Determination for the 2050 RTP and FY2020-2023 TIP for Cecil County and New Castle County.

Motion passed.

**(12-20-18 - 03)**

#### **8. To recommend release of the Draft 2050 RTP for Public Comment**

Ms. Zegeye distributed the 2050 RTP and TIP Schedule (**Attachment A**). The update of the 2050 RTP started with the Regional Progress Report and staff completed the Public Opinion Survey. A draft project list and the AQ Conformity Determination document were also developed. Staff is presenting the 2050 RTP to municipalities, counties and civic organizations.

Typically, WILMAPCO staff publicizes the RTP in WILMAPCO's Transporter newsletter and E-News, sends out press releases, participates in radio interviews, and holds the "Our Town" event, during the public comment period.

In addition, the public outreach process for this document includes a Metroquest survey that was conducted with 470 participants that received 353 comments. Staff also held a Virtual Workshop where 125 participants registered, and 75 people attended.

Popup events have been held at the Wilmington Train Station and the Christiana Mall. Popups will also be held at the Perryville Train Station and the Wilmington Public Library. Staff is also expecting to setup popups at either grocery stores or community centers. Staff welcomes TAC and AQS input on any additional areas to hold these presentations and popup events.

The "Our Town" event will be held on Thursday, February 7, 2019, at the STAR Tower Atrium from 4:00 p.m. to 7:00 p.m. Concerning social media outreach on the virtual workshop, we got 155 event responses, 10,900 individuals saw the advertisement, and 49 liked, commented, or shared the RTP information.

Ms. Zegeye distributed maps of Financially Constrained Projects (**Attachment B**). She asked members to provide comments before March 6, 2019. Ms. Sarros asked what was different in the handout other than what was provided in the packet. Ms. Dunigan said the only updates are the maps; however, the projects are the same.

**ACTION:** On motion by Mr. Fortner and seconded by Ms. Kaminsky, the TAC recommended release of the 2050 RTP for Public Comment.

Motion passed.

**(12-20-18 - 04)**

## 9. To recommend release of the Draft FY 2020-2023 TIP for Public Comment

Ms. Dunigan said proposed new projects are:

- Glasgow Avenue: SR896 – Implements the Glasgow Avenue Study completed last year by WILMAPCO.
- Southbridge Transportation Network – Improves access from the Southbridge Neighborhood to the Wilmington Riverfront.
- SR2/ Harmony Road Intersection – Part of the Churchman’s Crossing Corridor project that will improve safety and capacity.
- SR 7 Median Barrier Replacement project – A preservation project.
- SR 896, from US 40 – I-95 Widening – Adds one lane in each direction and improves bike, pedestrian, transit, and multiuse pathways.
- Tyler McConnell Bridge, SR 141: Montchanin Road – Alapocas Road – A four-lane structure over the Brandywine River, which will relieve congestion and improve safety.
- US 40 and SR 7 Intersection – Provides safety and pedestrian improvements.
- I-95 Belvedere Road Interchange – A public/private partnership and Cecil County received a grant for \$20 million dollars for this \$54-million dollar project.

The Public Comment Period for the TIP matches the RTP comment period. At the Our Town event the FY 2020-2023 TIP and 2050 RTP will be available for review. Ms. Dunigan distributed the Draft WILMAPCO Quick TIP Guide (**Attachment C**). In the TIP Quick Guide, the maps and financial summaries with revised Maryland numbers will be updated prior to the start of the public comment period.

Mr. Shelton suggested that the font on the front page of the Quick TIP Guide should be enlarged so that the public could better understand what WILMAPCO is asking them to do.

**ACTION:** On motion by Mr. Thomas and seconded by Ms. Minner, the TAC recommended release of the FY 2020-2023 TIP for public comment.

Motion passed.

**(12-20-18 - 05)**

## 10. To recommend endorsement of the 2018 Inter-Regional Report

Mr. Thompson said the last update of the Inter-Regional Report was completed in 2012. The current 2018 Inter-Regional Report utilizes new Census data, as well as the Federal Highway Administration, MPO, County Planning Department, and transit provider data. It includes detailed maps and analysis including recalculated projections through 2045, detailed transit and highway data, and updated transit service feasibility scoring. The report is intended to be a technical tool to guide transportation investments and informed decision making, with cross-border coordination.

The report includes some of the major findings regarding demographics with population and employment change, environmental indicators, traffic volumes, travel speeds, volume to capacity ratios, Level of Service (LOS), commute times, freight and goods movement, portable transit scores, transportation investment areas, and interregional projects. The report concludes with recommendations on page 48.

Some of the key findings are that by 2040 the overall population is projected to increase by 11.8%, while employment is expected to grow by 9.9%. From 2012 to 2045, total traffic and truck volumes are projected to rise by 53% and 55% respectively. In the past decades, travel speeds have decreased in metropolitan areas and increased in rural areas. Congestion is

expected to significantly impede traffic flows throughout the region by 2045, with a 65% increase in the number of roadways reaching or exceeding their carrying capacity.

Mr. DiGiacomo suggested that on page 4, in the “Who is WILMAPCO” section that it include different language that shows that we are embracing completing the plan rather than we are doing it because we are being forced to do it. He suggested on page 8 to add maps; and he suggested on page 9 that the urban areas not be highlighted in green, because green highlighting should indicate rural areas. He added on page 24, Figure 12 and on page 29, Figure 16 shows some of the increased volumes; however, he is unsure where funds are being invested.

Mr. Dahlstrom said on page 44, in figure 27, in the center it says: “fill in the gap”, and he was not sure if that is a placeholder. In addition, there is no legend for three corridors. Ms. Zegeye said on page 44, “fill in the gap” refers to the rail gap between Perryville and Newark.

**ACTION:** On motion by Mr. DiGiacomo and seconded by Ms. Smith, the TAC recommended endorsement of the 2018 Inter-Regional Report.

Motion passed.

**(12-20-18 - 06)**

## **PRESENTATION/DISCUSSION ITEMS:**

### **11. Cecil County Strategic Highway Safety Plan (SHSP)**

Mr. Scott Flanigan, Director of Cecil County Public Works, said in each of the last five years 500 deaths and 3,700 serious injuries occurred statewide in Maryland due to motor vehicle crashes. There was an average of 17 deaths and 85 serious injuries in Cecil County. The numbers have increased. In 2017, there were 31 traffic-related fatalities in Cecil County, Maryland. Therefore, Secretary of Transportation Pete Rahn required County – level plans to be developed; and by September 2017 the Cecil County SHSP Committee was formed.

The Statement of Purpose of the Committee is to develop and oversee the implementation of a County-level Strategic Highway Safety Plan to complement the state-level plan with the goal of reducing the frequency and severity of motor vehicle crashes, including those involving bicyclists and pedestrians, which occur on roadways in Cecil County. The following four E’s of Highway Safety are included in the plan: 1) Engineering; 2) Enforcement; 3) Education; and 4) Emergency Medical Services.

The timeline for developing the plan includes a Kickoff Meeting (September 17), Monthly SHSP Committee Working Meetings (October 17-April 18), MHSO SHSP Workshop (November 17), Public Meeting (April 18), and Develop Draft SHSP (May 18-August 18). The timeline also includes to present the plan to the Cecil County Executive, coordinate the plan with county fire chiefs and law enforcement officials, and finalize and publish the plan (September 18).

Mr. Flanigan said for decreasing fatalities what is measured is what is improved. Types of measurements include metrics-serious injuries; interim-yearly targets; serious injuries, and non-motorized fatalities.

Seven emphasis areas that are not in priority order include 1) Aggressive driving; 2) Distracted driving; 3) Impaired driving; 4) Occupant protection; 5) Highway infrastructure; 6) Pedestrians and bicyclists; 7) Responder, worker safety, and protection. The plan identified 20 action items, including four in Engineering, eight in Enforcement, and eight in Emergency Medical Services.

The Cecil County SHSP Executive Council provides executive-level leadership; reviews progress; evaluates resource requirements; and provides strategic guidance. Membership includes the County Executive (Co-Chair); Cecil County Sheriff (Co-Chair); Health Officer; Director of Emergency Services; MDOT SHA District Engineer; MSP North East Barrack Commander; and Director of Public Works (Secretary). Meeting frequency is annual.

The purpose of the SHSP Steering Committee is to monitor implementation of the SHSP action items, prepare and present an annual update to the Executive Council and work to publicize the annual update to inform the public and other stakeholders of progress made to date. Membership includes the CCSO Director of Law Enforcement (Co-Chair), Director of Public Works (Co-Chair) and members of the SHSP Functional Area working groups. Meeting frequency is quarterly.

The Cecil County SHSP Functional Area Working Groups implements the SHSP action items and tracks and reports the action item metrics to the steering committee, for inclusion in the annual update to the Executive Council. Membership includes engineering working group members, enforcement working group members, and emergency medical services working group members. Meeting frequency is as needed. The path forward includes implementation (October 18); Executive Council Meeting (May 19); and Initiate the Process to Develop the 2021-2025 Cecil County SHSP.

Mr. Dahlstrom asked if an annual update will be published and can it be shared with WILMAPCO. Mr. Flanigan responded yes, a progress report would be given to the Cecil County Executive and to WILMAPCO.

## **INFORMATION ITEMS:**

### **12. Staff Report**

Ms. Dunigan reported on the following plans and events:

- Please park in the visitor parking spaces here, at the STAR Campus, so that you will not get a ticket.
- The 2050 RTP public outreach is continuing with presentations and popup events through March 2019 to municipalities and community groups. TAC members are welcome to submit any suggestions for additional community groups for 2050 RTP Update presentations or for additional popup locations. Please let Janet Butler know, since she is scheduling them.
- The WILMAPCO “Our Town” event will be held on Thursday, February 7, 2019, at the Atrium of the STAR Campus from 4:00 p.m. to 7:00 p.m. Registration and flyers are available.
- The New Castle County Bicycle Plan meeting that is collaborating with Delaware Greenways was held at the Brandywine Library on December 11, 2018.
- On December 13, 2018, the Town of Elsmere held a 2050 RTP Update meeting. Staff will try to schedule additional town meetings in the New Castle and Hockessin areas. Other locations are welcome.
- Staff attended the City of Newark Sustainability Plan Public Workshop on October 16, 2018.
- On January 22, 2019, WILMAPCO staff will attend a meeting with DVRPC, Penn DOT, and DelDOT regarding East Coast Greenway implementation at the Pennsylvania/Delaware Line. This project includes paving Route 13 in 2020.
- Staff attended the Newark Regional Transportation Center Study Phase I calls/meetings. The project team completed construction on December 11, 2018, including the Access Road

at South College Avenue. The Phase 2 contract was awarded and construction will be in the spring 2019, which includes the main train station building.

- On January 16, 2019, a Maryland Monroe/MLK Stakeholder meeting will be held.
- On January 7, 2019, the 12<sup>th</sup> Street Alignment Study Public Open House will be held at the Fletcher H. Brown Boys and Girls Club.
- The Concord Pike Master Plan Stakeholder Focus Group Interviews were held on November 15 and 16, 2018. The information will be used to draft concepts for the corridor. A live Wiki Map survey is available on the WILMAPCO website.
- A Southern New Castle County (SNCC) Visioning Workshop will be held in late January 2019. The Next SNCC Advisory Committee meeting will be held on January 17, 2019.
- The Union Street Reconfiguration Project has a spin-off project that is reviewing Pennsylvania Avenue and North Union Street concepts that will be available to the public for review in January 2019.

### **13. Informational Videos**

Mr. Gula announced that Mr. Mark Tudor is retiring from DelDOT. Mr. Gula congratulated Mr. Tudor on his many years of excellent service working with WILMAPCO staff on various projects. Mr. Tudor also expressed his appreciation of working with WILMAPCO and other TAC and AQS members during these years.

### **OTHER BUSINESS:**

### **ADJOURNMENT:**

The meeting adjourned at 11:15 a.m., followed by a networking.

### **Attachments (3)**

# WILMAPCO 2050 Regional Transportation Plan Update Schedule

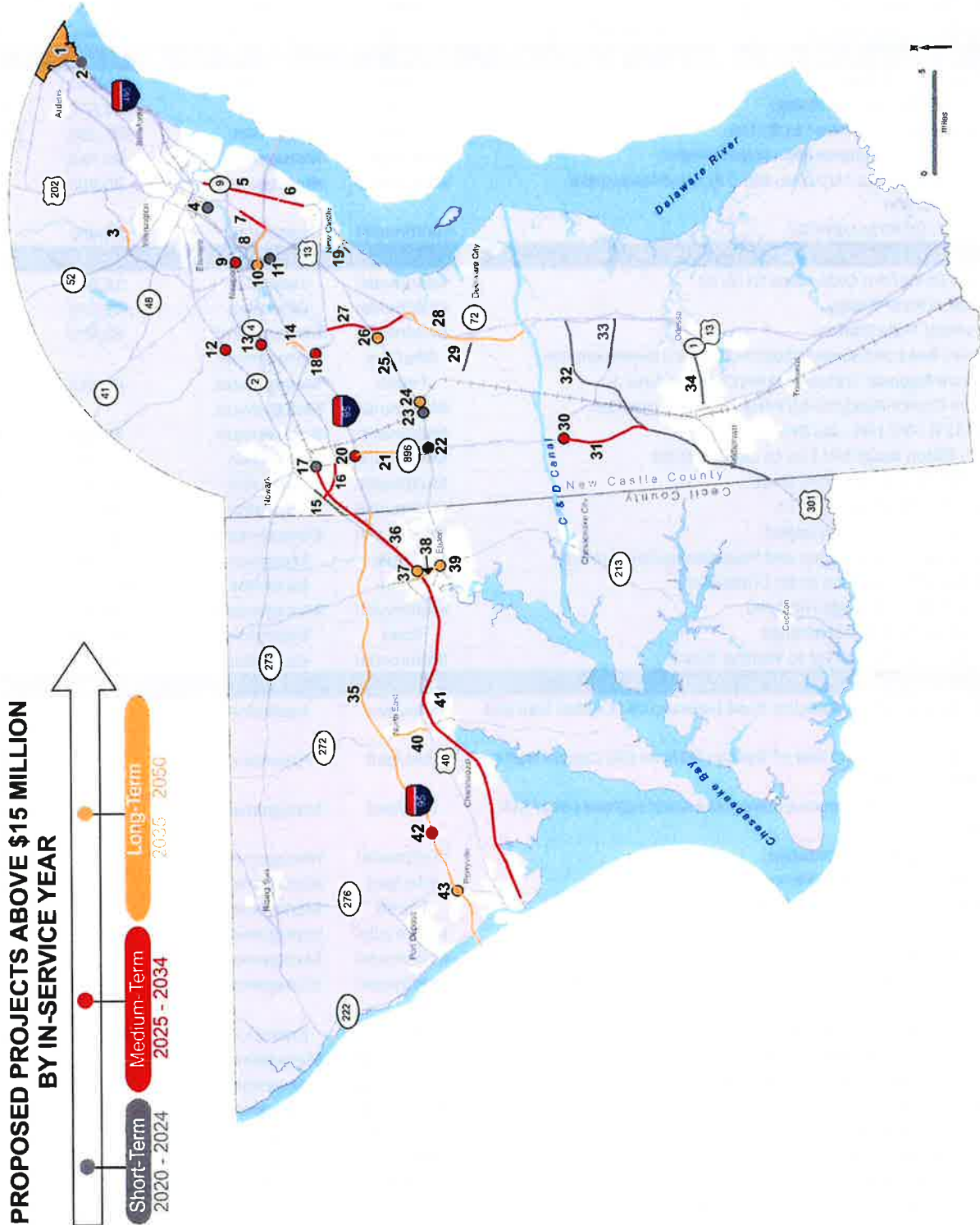
2050 Regional Transportation Plan (RTP) and FY 2020-2023 Transportation Improvement Program (TIP) Development Process																		
Status	Tasks	2018												2019				
		Jan	Feb	Mar	Apr	May	June	July	Aug	Sept	Oct	Nov	Dec	Jan	Feb	Mar	Apr	May
👍	Review 2040 RTP accomplishments and results to identify data and analysis needs and areas where we are falling short of our regional goals and objectives, and report on this in <i>Regional Progress Report</i>			C	T	C												
👍	Conduct Public Opinion Survey to analyze public perception of goals and strategies in RTP and transportation needs					T/C												
👍	Develop draft project list		T	C			T	C										
👍	Begin conformity analysis								AQ									
👍	Conduct technical assessment and agency coordination to draft RTP for mobility, livability, air quality, land use, environmental and financial reasonableness						T	T	T/C									
👍	Air Quality Conformity Determination completed for RTP and TIP									AQ/T	C							
	Outreach to civic organizations, member agencies, counties & municipalities																	
	Develop RTP draft document. Conduct public review through meetings, presentations and public work shops									C	P/T	C	P/T					
	Develop 2020-23 TIP draft document.												P/T	C				
	Based on Public Outreach meetings, comments & technical assessment, refine draft. <b>Release draft RTP, TIP and AQ Documents for official comment period from 1/14 - 3/6.</b>												P/T	C				
	Review public comments and revise as needed																	
	Our Town/RTP/Joint WILMAPCO and DeIDOT TIP Public Workshop																	
	Public Advisory Committee recommendation to Council															P		
	Technical Advisory Committee recommendation to Council															T		
	WILMAPCO Council Adopts the 2050 RTP and TIP																C	
	Submit Final RTP to FTA and FHWA																	
	FTA and FHWA Review																	

C=Update to Council  
 T=TAC update  
 P=PAC update  
 AQ=Air Quality Subcommittee update



Draft 2050 RTP (12/19/2018: \*final design pending\*

### Map of Financially Constrained Projects Over \$15 Million



## List of Financially Constrained Projects Over \$15 Million (\$s x 1000)

Timeframe (Short term to 2024; Medium Term 2025-2034; Long Term 2035-2050)

Map ID	Project Name	Mode	Category	2018 Cost	Year of Expenditure
42	I-95 / Belvidere Road Interchange	Road	Expansion	43,907	54,000
41	Maryland Commuter Rail: Perryville to Elkton (MARC extension)	Transit	Expansion	23,446	32,455
<b>Cecil County Medium Term Subtotal</b>				<b>67,353</b>	<b>86,455</b>
37	Elkton Train Station	Transit	Expansion	14,842	25,268
43	I-95 and MD 222 Interchange	Road	Expansion	163,672	313,612
35	I-95: Susquehanna River to DE Line	Road	Expansion	533,253	1,021,768
39	MD 213 / US 40 Intersection Improvements	Multimodal	Management	44,740	63,789
38	MD 213, Bridge St.: US 40 to MD 279, Multi-lane urban reconstruction	Multimodal	Management	20,500	34,900
40	MD 272: US 40 to Lums Rd.	Multimodal	Expansion	30,501	58,443
<b>Cecil County Long Term Subtotal</b>				<b>807,509</b>	<b>1,517,780</b>
33	Boyds Corner Rd: Cedar Lane to US 13	Multimodal	Expansion	18,000	21,493
4	Christina River Bridge	Multimodal	Expansion	49,733	52,762
2	Claymont Train Station	Multimodal	Management	60,000	65,564
3	Harvey Road and Sconset Road Pedestrian Improvements	Bike/Ped	Management		
17	Newark Regional Transportation Center, Phase II	Transit	Management	61,453	67,152
37	Salem Church Road/US 40/Porter Road Intersection	Multimodal	Management		
11	SR 141 & I-95: I-95 - Jay Drive	Multimodal	Management	79,689	89,691
15	SR 2, Elkton Road: MD Line to Casho Mill Rd	Multimodal	Expansion	34,301	37,482
34	SR 299, SR 1 to Catherine Street	Multimodal	Expansion	25,470	28,667
29	SR 72, McCoy Road to SR 71	Multimodal	Expansion	18,129	19,810
	Support for new technologies	Multimodal	Management	80,000	95,524
	Transit service expansion and frequency enhancements	Transit	Expansion	60,000	71,643
32	US 301: MD State Line to SR 1 (Mainline)	Road	Expansion	141,624	150,249
23	US 40 / SR 72 Wrangle Hill Road	Multimodal	Management	14,477	15,819
22	US 40 and SR 896 Interchange	Road	Expansion	58,500	71,948
25	US 40: Salem Church Rd to Walther Road	Multimodal	Expansion	18,500	22,090
<b>New Castle County Short Term Subtotal</b>				<b>719,876</b>	<b>809,892</b>
19	Add sidewalk along Newport Road between Old Capitol Trail and Duncan Road	Bike/ped	Expansion		
19	Add sidewalk on east side of Stanton Rd from Old Capitol Trail to Powell Ford Park	Bike/ped	Expansion		
12	BR 234 Pedestrian Improvements, Kirkwood Highway over Mill Creek	Bike/ped	Management	20,000	28,515
16	Cherry Ln at SR 9 Roundabout	Multimodal	Management		
39	DE 896: Old Baltimore Pike to US 40, Sidepaths	Bike/ped	Management		
13	Fairplay Train Station - Parking	Transit	Management	14,252	20,320
42	Glasgow Ave: Roundabout at Old County Road	Multimodal	Management		
41	Glasgow Ave: Roundabout at Paxson Drive	Multimodal	Management		
1	I-495 ramp improvements - ped / bike access and add NB ramp lanes	Multimodal	Management	22,000	36,363
20	I-95 and SR 896 Interchange	Road	Expansion	148,500	211,725
16	KarylN Drive at Memorial Drive Intersection Rebuild	Multimodal	Management		
16	Memorial Drive at SR 9 Roundabout	Multimodal	Management		
16	Memorial Drive Road Diet: Full Build	Multimodal	Management		
16	Memorial Drive Road Diet: Interim Build	Multimodal	Management		
16	Multiuse Center Lane Pathway: I-295 at SR 9	Bike/ped	Management		
9	Newport Rail Station	Transit	Expansion	30,000	42,773
1	North Claymont Spine Road: Northeast Corridor to Naamans Road	Multimodal	Expansion	15,000	21,386
1	Philadelphia Pike/Naamans Road intersection	Multimodal	Management	10,000	16,528
36	Rail - Newark to Elkton	Transit	Expansion	30,000	42,773

## Draft 2050 RTP (12/19/2018: \*final design pending\*

Map ID	Project Name	Mode	Category	2018 Cost	Year of Expenditure
16	Rogers Rd at SR 9 Intersection Rebuild	Multimodal	Management		
27	SR 1: Tybouts Corner to SR 273	Road	Expansion	110,000	156,834
18	SR 273 / Chapman Rd Intersection Improvements	Multimodal	Management	14,550	17,895
16	SR 4, SR 2 to SR 896	Multimodal	Expansion	21,500	26,442
30	SR 896 at Bethel Church Rd Interchange	Road	Expansion	25,000	30,747
16	SR 9 Road Diet/Streetscape: Buttonwood Ave to Cherry Ln	Multimodal	Management		
6	SR 9, New Castle Ave - 3rd St to Landers Ln, Pavement Reconstruction	Multimodal	Management	16,000	22,812
5	SR 9: Landers Ln - A St	Multimodal	Management	17,000	24,238
16	SR 9 Road Diet/Streetscape: Lambson Ln to Rogers Rd	Multimodal	Management		
16	SR 9 Road Diet/Streetscape: Memorial Dr to Lambson Ln	Multimodal	Management		
16	SR 9 Road Diet/Streetscape: Rogers Rd to Terminal Ave	Multimodal	Management		
16	Stamm Blvd at SR 9 Intersection Rebuild	Multimodal	Management		
	Support for new technologies	Multimodal	Management	104,000	171,896
	Support for shared ride services	Multimodal	Management	19,752	24,292
16	Terminal Avenue at SR 9 Roundabout	Multimodal	Management		
	Transit service expansion and frequency enhancements	Transit	Expansion	240,000	342,183
7	US 13, US 40 to Memorial Drive	Bike/ped	Management	28,000	34,436
31	US 301: Spur	Road	Expansion	78,000	111,209
	<b>New Castle County Medium Term Subtotal</b>			<b>963,554</b>	<b>1,383,369</b>
1	Diverging Diamond Interchange (DDI) at I-95 and Naamans Road	Multimodal	Expansion	30,000	57,483
14	Eagle Run Rd to Continental Drive Connector	Multimodal	Expansion	40,000	76,644
8	I-295, Northbound	Road	Expansion	10,000	19,161
1	Improve I-95 southbound off-ramp by widening and signaling ramp right turn	Multimodal	Management	24,500	63,090
1	Install a new I-495 pedestrian bridge next to Philadelphia Pike.	Bike/Ped	Management	20,000	51,502
28	SR 1: Tybouts Corner to Roth Bridge	Road	Expansion	60,000	154,505
10	SR 141 & I-95 Interchange	Road	Management	38,400	73,578
21	SR 896: US 40 to I-95 (widening to six lanes)	Multimodal	Expansion	30,000	77,252
19	SR 9, River Rd. Area, Dobbinsville (viaduct)	Road	Management	11,368	21,783
	Support for new technologies	Multimodal	Management	65,000	124,547
1	Tighten I-95 northbound off-ramp radius	Multimodal	Management		
	Transit service expansion and frequency enhancements	Transit	Expansion	68,000	130,295
3	Tyler McConnell Bridge, SR 141, Montchannin Road to Alapocas Road	Multimodal	Expansion	46,000	88,141
1	US 13, Philadelphia Pike: I-495 - PA Line	Multimodal	Management	10,000	19,161
24	US 40 Overpass of Norfolk Southern RR	Multimodal	Management	35,000	77,745
35	US 40, Eden Square Connector	Multimodal	Expansion		
26	US 40/SR 7 Grade Separated Intersection	Road	Expansion	58,000	111,134
	<b>New Castle County Long Term Subtotal</b>			<b>546,268</b>	<b>1,146,021</b>
	<b>TOTAL</b>			<b>3,104,560</b>	<b>4,943,517</b>





**List of Financially Constrained Projects Under \$15 Million (\$s x 1000)****Timeframe (Short term to 2024; Medium Term 2025-2034; Long Term 2035-2050)**

Map ID	Project Name	Mode	Category	2018 Cost	Year of Expenditure
50	East Coast Greenway - Cecil County Phase 1	Bike/ped	Expansion	4,187	4,999
<b>Cecil County Short Term Subtotal</b>				<b>4,187</b>	<b>4,999</b>
50	East Coast Greenway - Cecil County Phase 2	Bike/ped	Expansion	4,500	7,438
49	Elkton Bus Service Circulator	Transit	Expansion	145	207
<b>Cecil County Medium Term Subtotal</b>				<b>4,645</b>	<b>7,645</b>
10	4th St., Walnut St. to I-95	Multimodal	Management	3,000	3,478
6	Augustine Cutoff Pathway	Bike/Ped	Management	2,100	2,364
46	Cedar Lane: Marl Pit Rd. to Boyds Corner Rd.	Multimodal	Management	11,781	14,068
27	Center Boulevard extended to Churchmans Rd	Multimodal	Expansion	5,000	5,464
28	Commons Blvd Pathway	Bike/Ped	Management	5,450	6,508
1	Continue connection to SEPTA bus services	Transit	Management	1,004	1,199
22	Delaware Avenue Extension to Marrows Rd	Multimodal	Expansion	5,000	5,628
22	Delaware Avenue Separated Bicycle Facility	Multimodal	Management	10,000	11,255
24	Eagle Run Road: SR 273 to SR 7 (complete road for thru traffic)	Multimodal	Expansion	3,000	3,183
1	East Coast Greenway: Churchmans Crossing - Newark gaps (approx .2 mi)	Bike/Ped	Expansion	800	955
1	East Coast Greenway: New Castle - Churchmans Crossing gaps (approx. 2.8 mi)	Bike/Ped	Expansion	5,000	5,970
1	East Coast Greenway: PA line to Claymont Regional Transportation Center	Bike/Ped	Expansion	4,000	4,502
1	Enhance bus service to station and Tri-State Mall site	Transit	Management	1,000	1,194
15	Garasches Lane	Multimodal	Management	5,149	5,626
19	Gilbert Avenue sidewalk (one side)	Bike/ped	Expansion	450	537
29	I-295, Westbound from I-95 to US 13	Road	Expansion	5,000	5,305
5	I-95, Carr Road and Marsh Road Interchange Improvements	Multimodal	Management	5,022	5,328
1	Improve pedestrian bridge and connector trail over I-495 pedestrian bridge	Bike/Ped	Management	3,000	3,582
1	Install street lighting, especially in neighborhoods and along Hickman Road.	Multimodal	Management	2,000	2,388
8	King & Orange Streets, MLK Blvd. to 13th St.	Multimodal	Management	6,250	6,631
22	Library Ave Pedestrian Improvements	Bike/Ped	Management	2,000	2,388
18	Mill Creek Road and Stoney Batter Road Intersection (Highway Safety Improvement Program)	Multimodal	Management	3,351	3,555
45	N412, Lorewood Grove Road, Rd 412A to SR 1	Multimodal	Management	10,169	12,142
1	Naamans Rd / Philadelphia Pike access management (new signals at the spine road intersections; converting Alcott Avenue to right-in, right-out)	Multimodal	Management	5,000	5,970
26	New Castle County Transit Center	Transit	Management	4,250	4,644
19	New St sidewalk (one side): Old Capitol Trail to Jackson Avenue	Bike/ped	Expansion	820	979
22	Newark Bicycle Signal Detection	Bike/Ped	Management	2,000	2,388
22	Newark Bike Lanes	Bike/Ped	Management	2,000	2,388
22	Newark Transit Amenities and Service Modification	Transit	Management	1,000	1,194
19	Newport Rd Sidewalk, east side: Old Capitol Trail - Kiamensi St	Bike/ped	Expansion	1,000	1,194
32	Old Baltimore Pike and Salem Church Rd Intersection	Multimodal	Management	2,350	2,493
21	Possum Park Rd and Old Possum Park Rd Intersection Improvements	Multimodal	Management	1,650	1,857
1	Ridge Road - change free right turn from Naamans Road to a yield, and improving EB Ridge Road lane merge approaching Analine Village using signs and pavement markings	Multimodal	Management	6,000	7,164
25	Road A / SR 7 Improvements	Multimodal	Expansion	11,047	12,071

Draft 2050 RTP (12/19/2018: \*final design pending\*

Map ID	Project Name	Mode	Category	2018 Cost	Year of Expenditure
1	Sidewalk upgrades: Hickman Rd (access to Tri-State Mall), Analine Village path from Parkway Ave to Woodfield Dr, Darley Rd	Bike/Ped	Management	3,000	3,582
1	Society Drive - all way stop or a roundabout at the Northtowne Plaza driveway/bus stop crossing	Multimodal	Management	6,000	7,164
22	SR 2 / Red Mill Rd. Intersection Improvements	Multimodal	Management	9,025	10,158
18	SR 273 / Harmony Rd. Intersection Improvements (Highway Safety Improvement Program)	Multimodal	Management	4,175	4,562
	Support for shared ride services	Multimodal	Management	6,001	7,166
17	Valley Rd/Little Baltimore Rd/North Star Rd Intersection	Road	Management	2,586	2,826
9	Walnut St., Front St. to 3rd St. with sweep removal	Multimodal	Management	3,721	4,443
12	Wilmington Transit Hub	Transit	Expansion	10,000	10,609
<b>New Castle County Short Term Subtotal</b>				<b>181,151</b>	<b>206,102</b>
24	Churchmans Crossing Sidewalks & Bus Stop Improvements	Multimodal	Management	5,000	7,129
39	DE 896: US 40 to Porter Road, Sidepaths	Bike/ped	Management	3,000	4,277
43	Denny Rd/ Lexington Parkway Intersection	Multimodal	Management	750	1,069
1	East Coast Greenway: Claymont Station - Northern Delaware Greenway (2.25 mi)	Bike/ped	Expansion	11,000	14,783
1	Explore access to future residential/marina east of Northeast Corridor rail through adjacent Linde property	Multimodal	Expansion	5,000	8,264
40	Glasgow Ave Improvements	Multimodal	Management	8,000	11,406
4	Governor Printz Boulevard Road Diet	Multimodal	Management	1,000	1,426
11	Maryland Ave. and Monroe Street	Multimodal	Management	8,000	9,839
1	Naamans Road shared use pathway	Bike/Ped	Management	6,000	8,555
16	Neighborhood connections pathway network (multiple projects)	Bike/ped	Expansion	1,000	1,267
22	Newark Mid-block Pedestrian Crossing Improvements	Bike/Ped	Management	1,000	1,426
22	Newark Pedestrian Improvements	Bike/Ped	Management	2,000	2,852
31	Old Baltimore Pike: SR 72 to SR 273, Sidepath	Bike/ped	Management	8,000	11,406
19	Old Capitol Trail/ Newport Rd. Roundabout	Multimodal	Management	3,201	4,564
19	Old Capitol Trail/ Stanton Rd. Roundabout	Multimodal	Management	2,508	3,575
30	Otts Chapel Rd/Welsh Track Rd Intersection	Road	Management	200	285
19	Red Clay Creek Greenway through Marshallton	Bike/ped	Expansion	6,000	8,555
22	S. College Ave Gateway	Multimodal	Management	1,500	2,016
22	Signal Coordination - S. College Ave	Multimodal	Management	2,000	2,688
23	SR 2, Kirkwood Hwy / Harmony Rd.	Multimodal	Management	5,500	7,842
24	SR 4, Harmony Road Intersection Improvements	Multimodal	Management	750	1,069
24	SR 4, Ogletown Stanton Road/ SR 7, Christiana Stanton Road Phase 1, Stanton Split	Multimodal	Management	900	1,283
	Support for shared ride services	Multimodal	Management	5,000	9,581
48	US 13: Duck Creek to SR 1	Multimodal	Management	8,976	12,797
34	US 13: US 40 to Tybouts Corner, Sidepaths	Bike/ped	Management	7,000	9,980
38	US 40: MD State Line to SR 896, Sidepaths	Bike/ped	Management	8,000	11,406
33	US 40: SR 1 to US 13, Sidepaths	Bike/ped	Management	8,000	10,134
22	West Park Place Traffic Calming	Multimodal	Management	2,500	3,564
47	Wiggins Mill Road	Multimodal	Management	2,450	3,493
7	Wilmington Traffic Calming; 12th St. Connector	Multimodal	Management	8,000	9,839
<b>New Castle County Medium Term Subtotal</b>				<b>132,234</b>	<b>186,370</b>
44	Glasgow Pathway: Porter Rd - Canal	Bike/Ped	Management	4,500	7,438
2	Harvey Road Traffic Calming	Multimodal	Management	3,000	5,107
14	New Sweden Road Extension (South Wilmington)	Multimodal	Expansion	5,000	9,581
24	SR 4, Churchmans Road Intersection Improvements	Multimodal	Management	6,204	11,888
36	US 40: Newtown Trail & Pedestrian Improvements	Bike/ped	Expansion	5,000	9,581
22	Wyoming Rd and Marrows Road Access Management	Multimodal	Management	3,000	5,107
<b>New Castle County Long Term Subtotal</b>				<b>26,704</b>	<b>48,701</b>
<b>TOTAL</b>				<b>348,922</b>	<b>453,816</b>

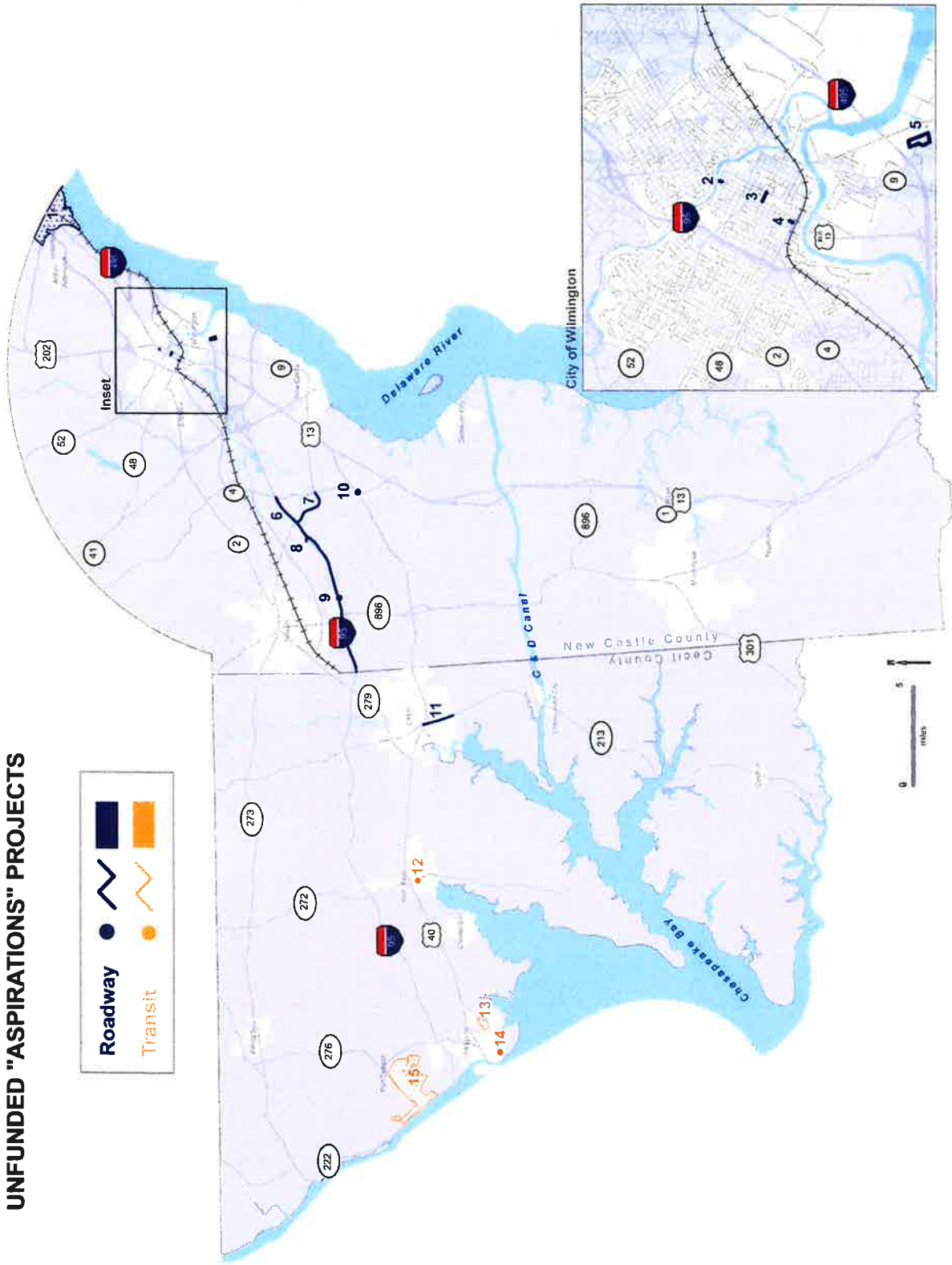
## **Unfunded Aspiration Projects**

The projects outlined in the previous section expend much of the forecasted capital through 2050. A separate, longer list of projects awaits funding. These “aspiration” projects were identified in recent transportation studies, or by the Maryland and Delaware Departments of Transportation, and are considered relevant by WILMAPCO. Maps and a listing of the aspiration projects follow.

Aspirational projects have been scored using the WILMAPCO Project Prioritization Process. Additional, innovative sources of funding should be pursued to add the projects to the Constrained Project List based upon priority scores.

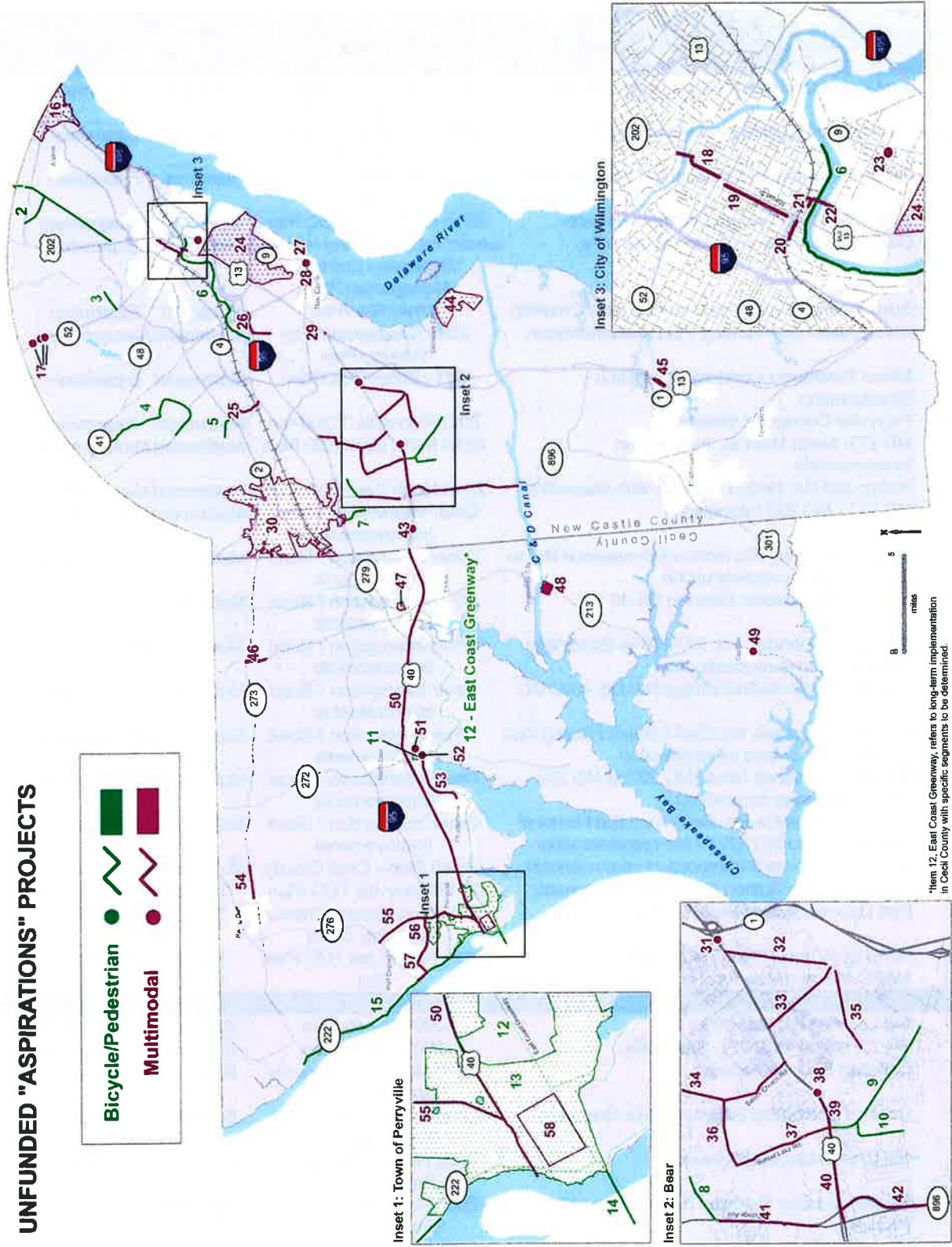


UNFUNDED "ASPIRATIONS" PROJECTS





UNFUNDED "ASPIRATIONS" PROJECTS



\*Item 12, East Coast Greenway, refers to long-term implementation in Cecil County with specific segments to be determined.

## List of Aspiration Projects

Map ID	Project Name	Source Plan	Mode	Category	Technical Score
<b>CECIL COUNTY PROJECTS</b>					
12	East Coast Greenway - Cecil County Phase 3	2003 East Coast Greenway Feasibility Study	Bike/ped	Expansion	9
N/A	Cecil County Bicycle Plan Implementation	2012 Cecil County Bicycle Master Plan	Bike/Ped	Expansion	0
13	Perryville Bicycle and Pedestrian Improvements	2012 Perryville Greenway Plan	Bike/Ped	Expansion	2
11	North East TOD Pedestrian Improvements	2014 North East TOD Plan	Bike/Ped	Management	1
15	Lower Susquehanna Heritage Greenway	Lower Susquehanna Heritage Greenway Corridor Management Plan	Bike/ped	Expansion	1
14	Susquehanna River Pedestrian/Bicycle Crossing	Other Bike/Ped	Bike/ped	Expansion	2
48	Chesapeake City Parking Plan Implementation	2009 Chesapeake City Parking Plan	Multimodal	Management	0
47	Elkton Downtown Connector Streets & Streetscaping	2011 Elkton TOD Plan	Multimodal	Expansion	2
58	Perryville Connector Streets	2012 Perryville TOD Plan	Multimodal	Expansion	2
52	MD 272/ North Main St. Intersection Improvements	2014 North East TOD Plan	Multimodal	Management	0
51	Rolling Mill Rd. Bridge (2-lanes with sidewalks)	2014 North East TOD Plan	Multimodal	Management	1
49	MD 213 / MD 282 Intersection	Other Intersection / Road Improvements	Multimodal	Management	0
46	MD 213, Singerly Rd: North of Providence Rd. to MD 273, 2 lane reconstruction	Other Intersection / Road Improvements	Multimodal	Management	0
11	MD 213: Frenchtown Road to US 40	Other Intersection / Road Improvements	Multimodal	Expansion	-1
57	MD 222, Bainbridge Rd: MD 275 to Bainbridge entrance, 2 lane reconstruction	Other Intersection / Road Improvements	Multimodal	Management	0
56	MD 222, Perryville/Bainbridge Rd: US 40 to MD 276	Other Intersection / Road Improvements	Multimodal	Expansion	0
54	MD 273, Telegraph Rd: East Limits of Rising Sun to Sylmar Rd, 2 lane reconstruction	Other Intersection / Road Improvements	Multimodal	Management	0
55	MD 275, Perrylawn Drive: MD 222 to MD 276 (divided highway reconstruct)	Other Intersection / Road Improvements	Multimodal	Management	1
53	MD 7, Philadelphia Rd.-Cecil Ave: East limits of Charlestown to MD 272, 2 lane reconstruction	Other Intersection / Road Improvements	Multimodal	Management	0
50	US 40 Corridor and Intersection Improvements	US 40 Plan - Cecil County	Multimodal	Management	4
14	Perryville Train Station Parking Improvements	2012 Perryville TOD Plan	Transit	Management	4
15	Port Deposit Shared Ride Service	2013 Port Deposit Transit Feasibility Study	Transit	Management	3
12	North East Transit Hub/ Train Station	2014 North East TOD Plan	Transit	Expansion	3
13	MARC Maintenance Facility	Rail	Transit	Expansion	0
<b>NEW CASTLE COUNTY PROJECTS</b>					
10	Del Laws Road, Sidewalks	2000 US 40 Plan	Bike/ped	Management	2
9	SR 72: US 40 to SR 71, Sidewalks	2000 US 40 Plan	Bike/ped	Management	9
6	Christina River Greenway	2006 New Castle County Greenway Plan	Bike/ped	Expansion	8
8	Cooch's Bridge/Old Baltimore Pike Greenway	2006 New Castle County Greenway Plan	Bike/ped	Expansion	7
4	Mill Creek/Hockessin Greenway	2006 New Castle County Greenway Plan	Bike/ped	Expansion	7
7	SR 896 Corridor Pathway (formerly Iron Hill Bikeway)	2006 New Castle County Greenway Plan	Bike/ped	Expansion	1
44	Clinton St Bicycle Plans	2009 Delaware City Transportation Plan	Bike/Ped	Preservation	7
30	Newark Car-sharing Expansion	2011 Newark Transportation Plan	Bike/Ped	Expansion	25
2	Grubb Road, SR 261: Foulk Rd. to Naamans Rd.	Brandywine Hundred Pedestrian Plan	Bike/Ped	Expansion	4

## Draft 2050 RTP (12/19/2018: \*final design pending\*

Map ID	Project Name	Source Plan	Mode	Category	Technical Score
3	Buck Rd Sidewalk	New Castle County	Bike/Ped	Management	4
1	Foult Road Sidewalks	Other Bike/Ped	Bike/Ped	Management	9
5	Pike Creek Road Sidewalks	Other Bike/Ped	Bike/Ped	Management	4
25	Churchmans Road Extended, SR 2 to SR 4	1997 Churchmans Crossing Plan	Multimodal	Expansion	11
27	City of New Castle Intersections (SR9/3rd and SR9/6th & SR9/Delaware St)	1999 City of New Castle Transportation Plan	Multimodal	Management	6
28	Route 9; Reconstruct Ferry Cutoff as 4 lanes	1999 City of New Castle Transportation Plan	Multimodal	Expansion	5
33	Church Road: Wynnfield to SR 71	2000 US 40 Plan	Multimodal	Management	2
32	DE 7: US 40 to DE 71	2000 US 40 Plan	Multimodal	Management	8
41	Local Glasgow Circulator Roads - to include sidewalks and bicycle accommodations	2000 US 40 Plan	Multimodal	Management	14
35	Old Porter Road: Porter Road to SR 71	2000 US 40 Plan	Multimodal	Management	1
36	Reybold Road: SR 72 to Salem Church Rd	2000 US 40 Plan	Multimodal	Management	3
34	Salem Church Rd: I-95 to US 40, Sidewalks	2000 US 40 Plan	Multimodal	Management	9
38	Scotland Drive/US 40, Intersection	2000 US 40 Plan	Multimodal	Management	13
37	SR 72: Reybold to US 40	2000 US 40 Plan	Multimodal	Management	1
43	US 40 & Pleasant Valley Road Intersection	2000 US 40 Plan	Multimodal	Management	7
39	US 40, SR 72 to Salem Church Rd	2000 US 40 Plan	Multimodal	Management	13
29	US 40/ US 13 Interchange	2000 US 40 Plan	Multimodal	Management	3
40	US 40: SR 896 to SR72	2000 US 40 Plan	Multimodal	Management	13
17	SR 52 and Snuff Mill Rd, Center Meeting Rd Intersections	2002 Centerville Village Plan	Multimodal	Management	1
23	Southbridge Streetscape Improvements (Future Phases)	2008 Southbridge Circulation Study	Multimodal	Management	9
44	Delaware City Pedestrian / Bike / Wayfinding Improvements	2009 Delaware City Transportation Plan	Multimodal	Preservation	7
44	Delaware City Plan Regional Wayfinding	2009 Delaware City Transportation Plan	Multimodal	Preservation	7
44	Emergency planning and implement flood mitigation	2009 Delaware City Transportation Plan	Multimodal	Preservation	7
44	Route 9 traffic calming, pedestrian facilities and bicycle lanes	2009 Delaware City Transportation Plan	Multimodal	Preservation	7
44	Washington Street Improvements	2009 Delaware City Transportation Plan	Multimodal	Preservation	7
2	Convert 1500 block of King St to two-way street	2010 Downtown Circulation Study	Multimodal	Management	2
3	Two-way traffic on 8th St between King & Walnut Sts	2010 Downtown Circulation Study	Multimodal	Management	13
30	N. Chapel St. Underpass at Cleveland Ave	2011 Newark Transportation Plan	Multimodal	Management	23
16	Construct new road from Alcott Avenue to spine road	2017 North Claymont Area Master Plan	Multimodal	Expansion	14
16	Widen eastbound Naamans Road approaching Spine Rd (2 left turn, 2 through, 1 right turn)	2017 North Claymont Area Master Plan	Multimodal	Expansion	14
26	Airport Rd: Commons Blvd - I-95	New Castle County	Multimodal	Management	4
16	Philadelphia Pike: Naamans Rd - PA Line	North Claymont Area Master Plan	Multimodal	Management	0
45	US 13: Odessa Transportation Plan Implementation	Other Intersection / Road Improvements	Multimodal	Management	1
42	SR 896: C & D Canal to US 40, Widening to 6 lanes	US 301	Multimodal	Expansion	4
31	DE 1 southbound ramp/US 40 Intersection	US 40 Plan	Multimodal	Management	10
18	Market Street: 11th to 16th Sts.	Wilmington Initiatives Plan	Multimodal	Management	10
22	S. Walnut Street Bridge Area	Wilmington Initiatives Plan	Multimodal	Management	14
19	Shipleigh Street Enhancements: 12th Street to MLK Blvd.	Wilmington Initiatives Plan	Multimodal	Management	9
21	Water St. East Extended (French St. to Front St.)	Wilmington Initiatives Plan	Multimodal	Expansion	10
20	Water St. West: Shipleigh Street to West Street	Wilmington Initiatives Plan	Multimodal	Management	10



Draft 2050 RTP (12/19/2018: \*final design pending\*

Map ID	Project Name	Source Plan	Mode	Category	Technical Score
8	I-95/ Chapman Road ramp	1997 Churchmans Crossing Plan	Road	Management	4
10	SR 1 NB Ramp to US 40	2000 US 40 Plan	Road	Management	9
4	Add Southbound lanes on Market St. between 2nd St and MLK Blvd.	2010 Downtown Circulation Study	Road	Management	8
N/A	Newark Downtown Parking Improvements	2011 Newark Transportation Plan	Road	Management	22
5	Port of Wilmington Truck Staging Area (site location undetermined)	2013 Port of Wilmington Truck Parking Study	Road	Management	10
1	Build industrial access road to future industry east of Northeast Corridor rail with new bridge over Naamans Creek	2017 North Claymont Area Master Plan	Road	Expansion	14
6	I-95: MD Line to SR 1	I-95 MD Line to I-295 Program	Road	Expansion	4
7	SR 273: I-95 to SR 1	Other Intersection / Road Improvements	Road	Management	15
9	I-95/DE 72 partial interchange - northbound entrance, southbound exit only	US 301 MIS	Road	Expansion	11
24	Garasches Ln to Terminal Ave Extension Concept Study	2017 Route 9 Corridor Master Plan	Study	Expansion	16
24	Pigeon Point Rd Extension w/new I-295 interchange Concept Study	2017 Route 9 Corridor Master Plan	Study	Expansion	15
24	Comprehensive truck signage	2017 Route 9 Corridor Master Plan	Trucks	Management	16
24	Illegal truck movement outreach and enforcement	2017 Route 9 Corridor Master Plan	Trucks	Management	16

# WILMAPCO TIP QUICK GUIDE

The TIP is prepared by WILMAPCO in cooperation with the public and local transportation and land use agencies. Broad input is crucial because the TIP identifies regional priorities for how our federal, state and local transportation funding is spent.

## How is the TIP Funded?

All federally funded projects must be included in the TIP and most federal funds require matching funds. Much of this revenue is from user fees such as the gas tax. State and local matches are also supplemented by borrowing, state and local taxes, and private funding.

<b>\$1.140 million</b> Delaware/Maryland 53%	<i>Delaware/Maryland funds from fuel taxes, tolls, motor vehicle and other fees, &amp; bonds</i>
<b>\$960 million</b> federal 45%	<i>Federal Highway Administration (FHWA) and Federal Transit Administration (FTA)</i>
<b>\$37 million</b> other 2%	<i>Other funding comes from local funds, developer contributions, toll bonds, and grants</i>

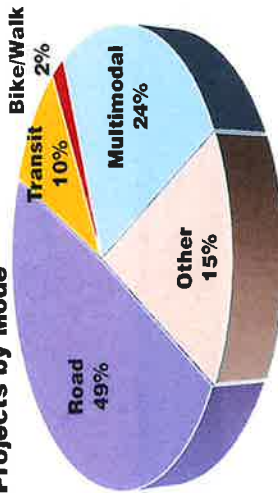
## Where are the projects?

While projects are located throughout the region, Transportation Investment Areas define appropriate projects based on location, and direct the greatest resources toward serving the most population. WILMAPCO uses a prioritization process to identify benefits by location.

<b>Cecil County 3%</b>	<i>The TIP document is grouped by Cecil County, New Castle County, and Delaware Statewide.</i>
<b>New Castle County 35%</b>	<i>contains funding for all counties in Delaware and projects do not specify amounts for New Castle County, for example Engineering and Contingency</i>
<b>Delaware Statewide 61%</b>	

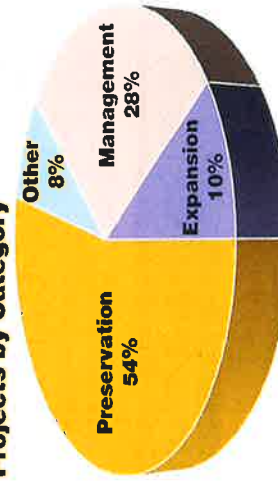
## What Types of Projects are in the TIP?

### Projects by Mode



**Road**—Exclusively for roads and highways  
**Transit**—Bus, passenger rail or paratransit  
**Bicycle/walk**—Pedestrian and cycling transportation  
**Multimodal**—Serves cars, transit, freight, walking and bicycles in a balanced way  
**Other**—Includes aeronautics, port, contingency funds, environmental, equipment, planning, etc.

### Projects by Category



**Preservation**—Maintain an existing facility or service  
**Management**—Enhance existing facility or service to sustain an acceptable level of service  
**Expansion**—New/expanded services and infrastructure  
**Other**—Engineering & contingency, education & training, environmental program and planning

# HAVE A SAY IN HOW YOUR TRANSPORT DOLLARS ARE SPENT

## WILMAPCO's Transportation Improvement Program (TIP) funds the region's transportation projects.

The TIP represents the first 4 years of your region's long-range plan, and prioritizes and documents planned projects including roads, buses, rail, bicycle and pedestrian improvements.

### How can you participate?

- Stay informed—sign up for our monthly e-news and quarterly newsletter by visiting [www.wilmapco.org](http://www.wilmapco.org) or calling 302.737.6205
- Attend public meetings or invite us to speak to your group. Two TIP workshops are held each year. In addition, WILMAPCO, DelDOT and MDOT host many public events on individual plans and projects
- Call us or E-mail comments to [wilmapco@wilmapco.org](mailto:wilmapco@wilmapco.org)



## WHAT'S NEW: Draft TIP is available for comment from January 14—March 6, 2019

### NEXT PUBLIC WORKSHOP:

- New projects include:
- SR 896 widening, US 40-I-95 with multimodal improvements
  - Glasgow Avenue, SR 896-US 40, implement the Glasgow Avenue study
  - US 40 / SR 7 Intersection Improvements
  - Kirkwood Highway / Harmony Rd Intersection Improvements
  - Tyler McConnell Bridge replacement with improvements to SR 141, Montchanin Rd – Alapocas Rd
  - Southbridge Wilmington local street network
  - SR 7 median barrier replacement
  - I-95 / Belvidere Road new interchange

Meeting will be held in conjunction with **Regional Transportation Plan Forum 2019 Our Town: Planning for Tomorrow**

- February 7, 4-7 p.m., University of Delaware Tower at Star 100 Discovery Blvd, Newark, DE 19713
- Contains \$2.1 billion in road, transit, rail, multimodal & bicycle/pedestrian projects, 12% less than the TIP approved in September 2018

**WILMAPCO**  
 WILMINGTON AREA PLANNING COUNCIL  
 850 Library Avenue, Newark, DE  
 302-737-6205 • [wilmapco.wilmapco.org](http://wilmapco.wilmapco.org)  
**WWW.WILMAPCO.ORG/TIP**

**SEE INSIDE FOR**



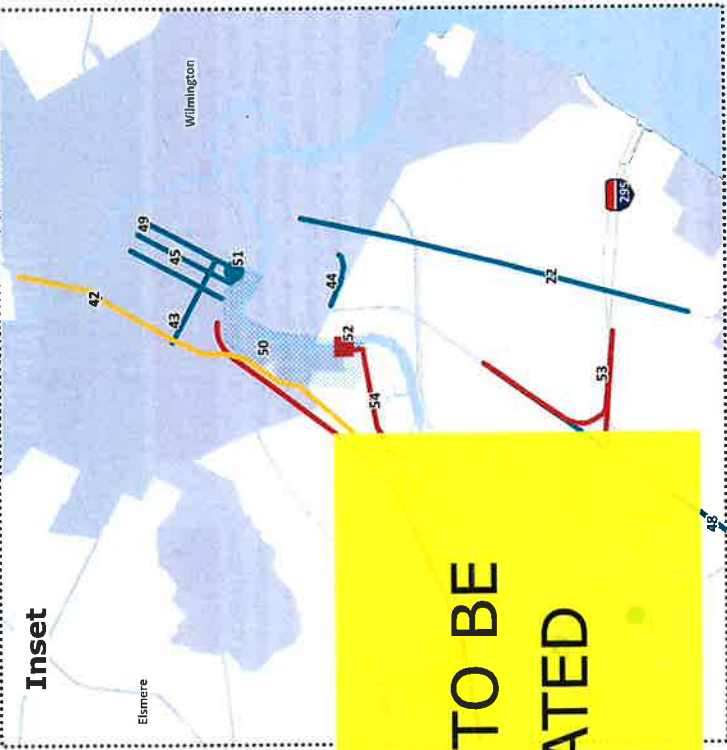
# DRAFT Projects in FY 2019-2022 TIP

- ◆ Preservation
- Management
- Expansion



**The TIP is the agreed upon list of priority projects.**  
 It signifies a consensus of what is expected to be built or carried out, and shows estimated costs and schedules for planning, engineering, right-of-way, and construction. It must be based on available funding and work toward achieving regional goals for healthier air quality.  
 The TIP is NOT a final schedule or guarantee that a project will be completed. Rather, it is the "best estimate" at the time of the TIP's development and may need to be amended based on changes in cost, engineering obstacles, environmental permit conflicts, changes in priorities, or funding issues.

ID	Project	ID	Project	ID	Project
1	Cecil County Bridge Painting	12	Newark Train Station	23	US 40 / SR 7 Intersection
2	MD 222 Bridge over Rock Run	13	Old Capital Trail: Newport Rd - Stanton Rd	24	US 40 / SR 72 Interchange
3	MD 272 Bridge over Antrak	14	Otis Chapel Rd / Welsh Tract Church Rd	25	US 40 / SR 896 Interchange
4	Susquehanna River Bridge Replacement	15	Possum Park & Old Possum Park Intersection	26	US 40: Salem Church Rd - Walther Rd
5	Little Baltimore Pike	16	SR 2 / Red Mill Road	27	Road A/SR 7
6	SR 9, River Road Flood Remediation	17	SR 273 / Chapman Rd	28	SR 1: Roth Bridge to SR 273
7	Claymont Train Station	18	SR 273: Appleby Rd - Airport Rd	29	SR 2, Elkton Road: MD Line to Casho Mill Rd
8	Denny Rd / Lexington Parkway	19	SR 4 / Harmony Rd	30	SR 72: McCoy Road - SR 71
9	Fairplay Train Station	20	SR 4 / SR 7	31	Third Rail Track Expansion, Newark - Wilmington
10	I-95 & SR 896 Interchange	21	SR 4: SR 2 - SR 896	32	Cedar Ln: Marl Pit Rd - Boyds Corner Rd
11	NCC Transit Center	22	SR 9: Landers Ln - A St	33	Jamison Corner Rd: Relocated to Boyds Corner Rd



MAPS TO BE  
UPDATED

**Example Projects (areawide projects, not mapped)**  
 Road and bridge preservation  
 Safety  
 Transit Operating and Capital Funds  
 Bicycle and Pedestrian Improvements and Recreational Trails Program  
 Municipal Street Aid and Community Transportation Funds  
 Intersection Improvements

Visit [www.wilmapco.org/tip](http://www.wilmapco.org/tip) or call 302-737-6205 to learn more. In the TIP document, you can read all project descriptions and learn funding for each year and phase.

ID	Project	ID	Project	ID	Project
34	Loewood Grove Rd	45	King & Orange Sts: MLK - 13th	51	Wilmington Transit Center
35	Middletown Park and Ride	46	SR 141/I-95 Interchange	52	Christina River Bridge
36	Shallicross Lake Rd: Graylag Rd - Boyds Corner Rd	47	SR 141: I-95 - Jay Dr	53	I-295 Improvements
37	US 13: Duck Creek - SR 1	48	US 13: US 40 - Memorial Dr Pedestrian	54	NCC Industrial Track Greenway, Phase III
38	SR 299: SR 1 to Catherine Street	49	Walnut St: Front to 13th St		
39	SR 896 / Bethel Church Interchange	50	Wilmington Riverfront Program		
40	US 301: Maryland Line to SR 1				
41	Boyds Corner Rd: Cedar Lane to US 13				
42	I-95: I-495 - North of Brandywine River				
43	4th St: Walnut St - I-95				
44	Garasches Lane				