

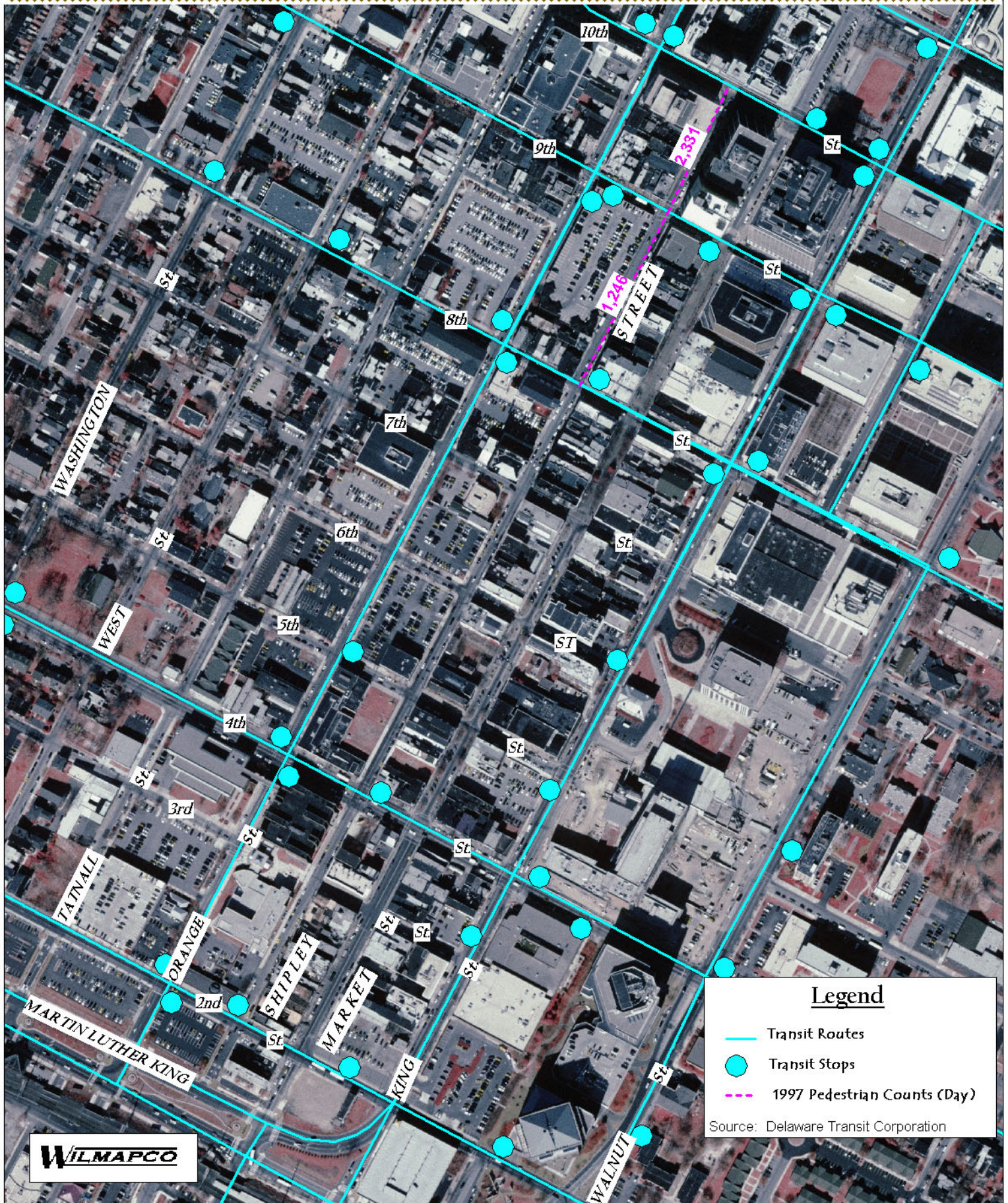
## Appendix B

### Mapping of existing conditions

- Transit and Pedestrian Counts
- Land Use
- Intersection Level of Service
- Population
- Accident Locations

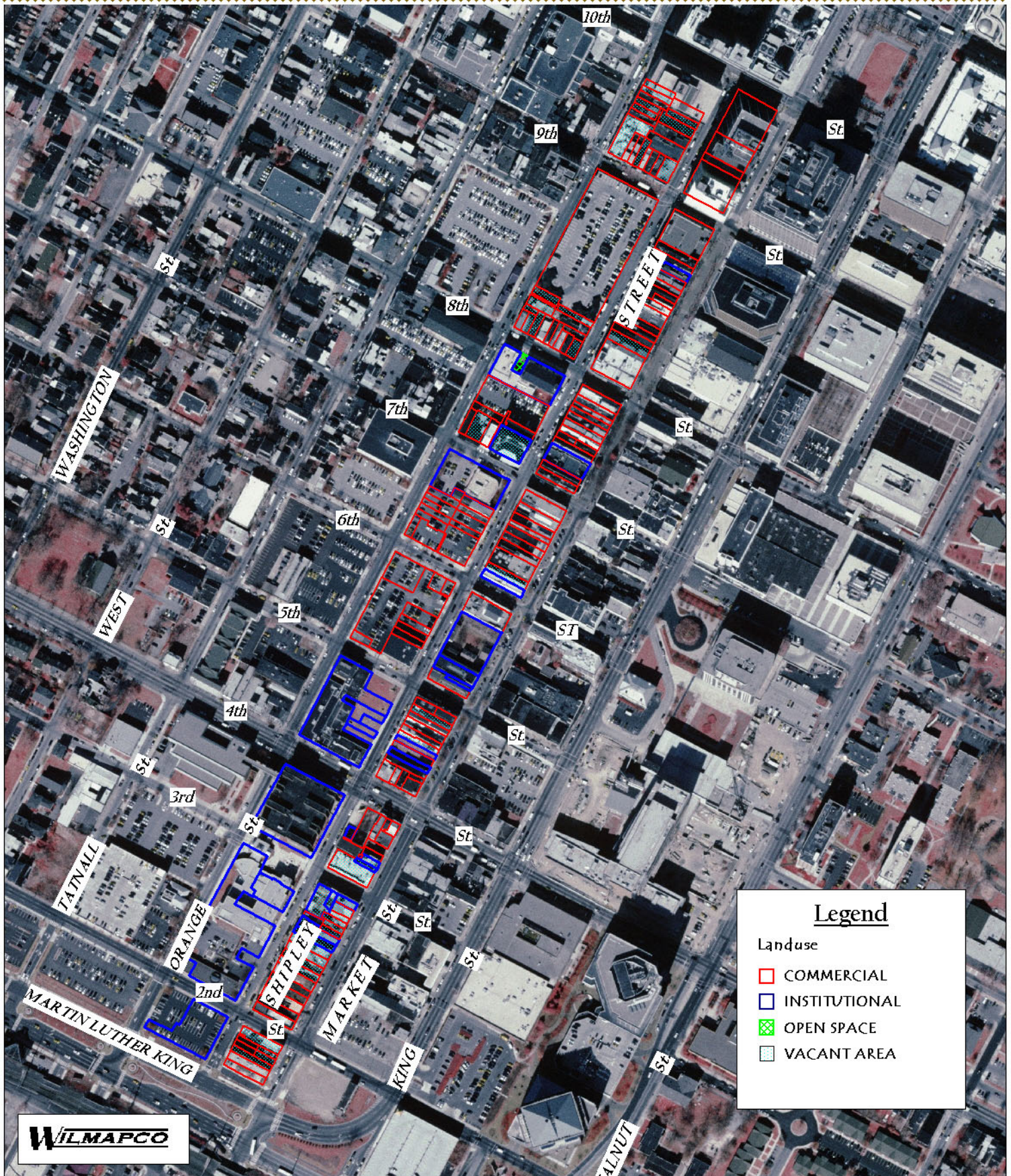


# Transit Routes, Transit Stops & Pedestrian Counts





# Land Use





# Intersection Level of Service

LOS Based on 1999 Counts



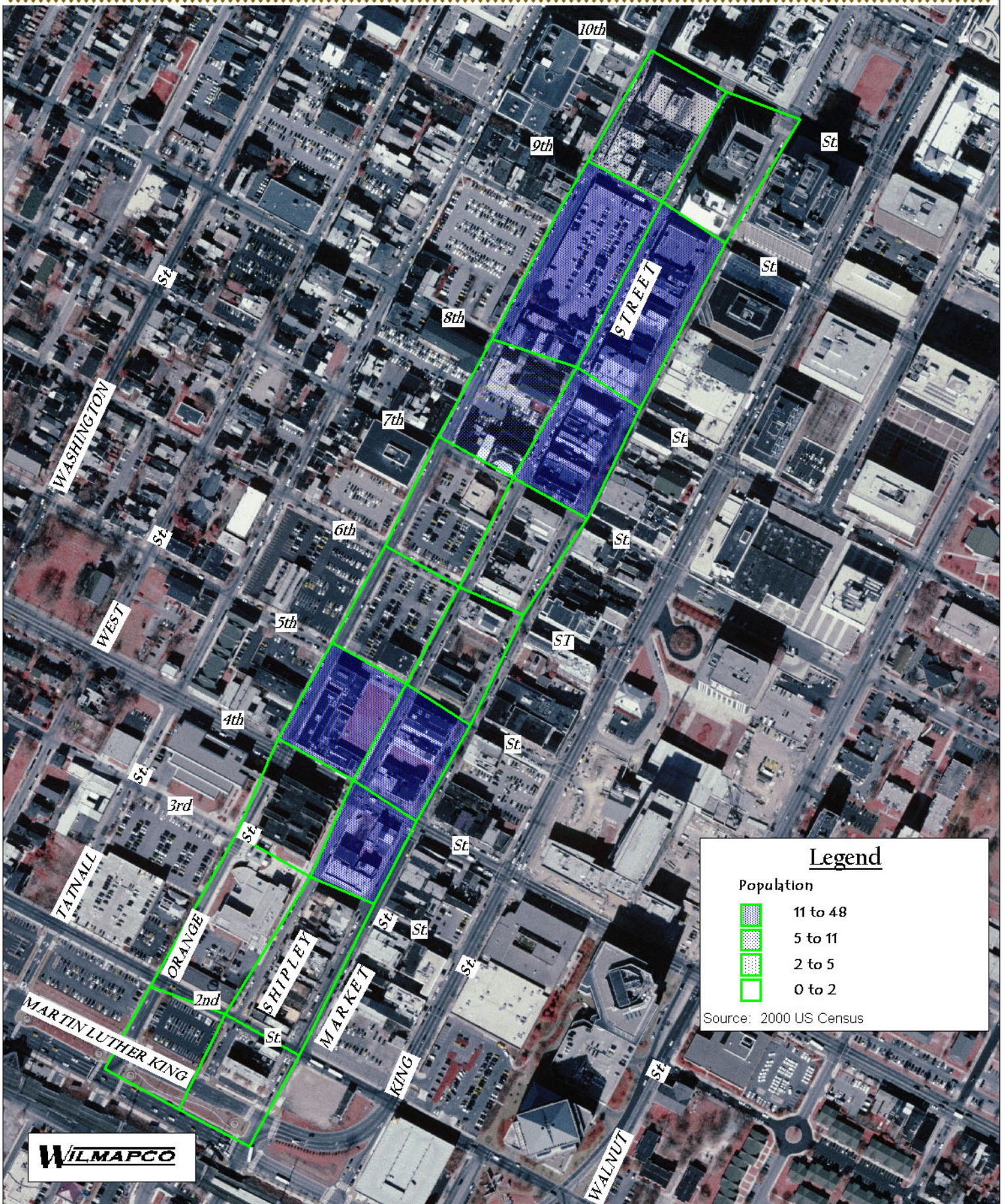
## Legend

- AM Level of Service (LOS)
- PM Level of Service (LOS)

Source: DelDOT



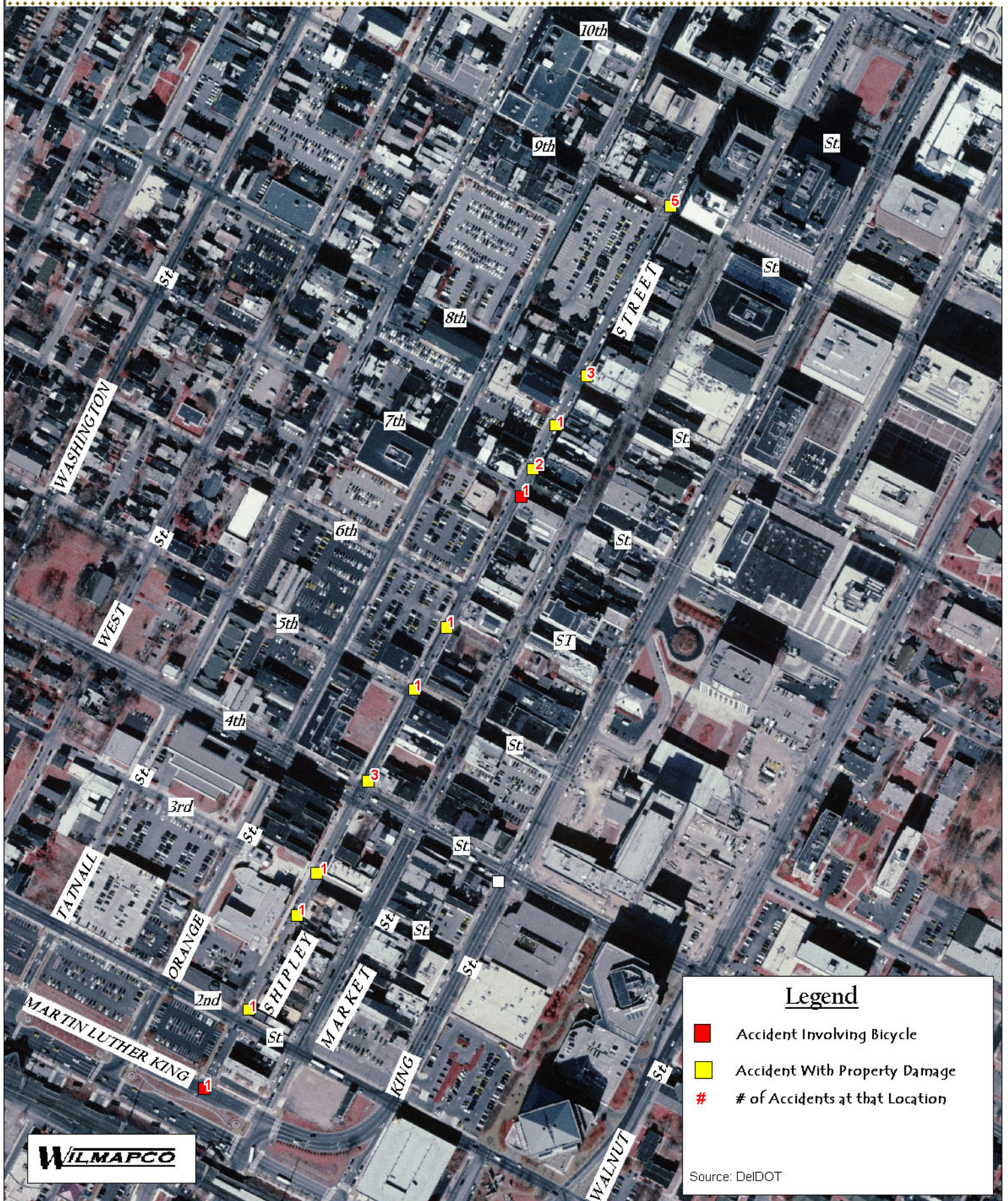
# 2000 Census Blocks





# Accident Locations

January 00 to July 03









1 Looking north from the corner of Shipley and 2nd Street. Brick wall and street lamp are on the east side of the road.



2 Looking north on the corner of Shipley and 2nd Street. Brick building and street lamp are on the east side of the road.



3 Looking north on the west side of Shipley Street, showing a brick building and a street lamp.



4 Looking south on the east side of Shipley Street, showing a brick building and a street lamp.



5 Looking north on the corner of Shipley Street and 4th Street. Brick building and street lamp are on the east side of the road.



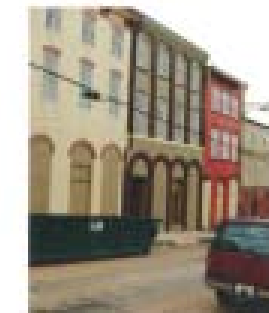
6 Looking north on the corner of Shipley Street and 5th Street. Brick building and street lamp are on the east side of the road.



7 Looking north on the corner of Shipley Street and 6th Street. Brick building and street lamp are on the east side of the road.



8 Looking south on the east side of Shipley Street, showing a brick building and a street lamp.



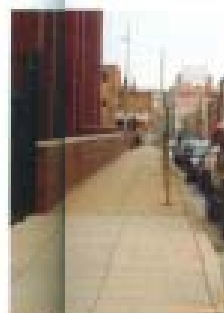
9 Looking south on the east side of Shipley Street, showing a brick building and a street lamp.



10 Looking south on the east side of Shipley Street, showing a brick building and a street lamp.



11 Looking south on the east side of Shipley Street, showing a brick building and a street lamp.



12 Looking south on the east side of Shipley Street, showing a brick building and a street lamp.



13 Looking south on the east side of Shipley Street, showing a brick building and a street lamp.



14 Looking south on the east side of Shipley Street, showing a brick building and a street lamp.



15 Looking south on the east side of Shipley Street, showing a brick building and a street lamp.

## Shipley Street Improvements- Existing Conditions

Wilmington, Delaware





10 The parking lot at the corner of Shipley and 6th Street is fenced and has several street trees.



12 Overhead utilities, stoops, signs, and back ends of buildings are not pedestrian-friendly.



20 The escapes and overhead utilities will limit landscaping opportunities south of 7th Street and add to the visual clutter.



22 Ornate architecture, like this building located north of 7th Street, should be restored and preserved.



24 This building at the corner of Shipley and 8th Street offers unique architecture. Its first floor facade could be enhanced.



25 The eastern side of Shipley Street north of 8th Street has a variety of uses, most of which have direct access from Shipley Street.



27 Double parking along Shipley Street is a frequent concern. Loading areas must be clearly designated and enforced.



30 Decorative lighting is in disrepair, as is the sidewalk. Elements such as signage and building signs could be enhanced and replaced.



18 This building's setback has allowed for substantial landscaping. Landscaping south of this should be enhanced and built upon.



19 The congested eastern sidewalk is cluttered with utility poles, trash receptacles, and parking meters.



27 The church's parking lot leads up to the existing sidewalk, creating a safety risk for pedestrians.



23 The existing church parking lot has decorative fencing, lighting, and landscaping, which can be built upon.



26 The existing parking garage is currently being renovated. Its dark facade contrasts with the character of the buildings across the street.



28 Shipley Street looking south from 9th Street. The retail component of the parking garage could be expanded.



29 Shipley Street looking south from 10th Street has a distinct 'blowdown' character.

## Shipley Street Improvements- Existing Conditions

Wilmington, Delaware