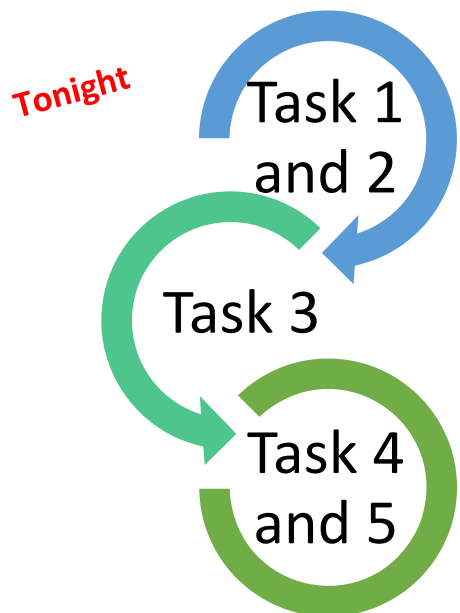


Thank you for participating in tonight's workshop. You are helping to shape the future for a thriving Southern New Castle County!

The goal of the Master Plan is to establish a long-term, publicly-supported blueprint for land use and infrastructure in southern New Castle County. The Master Plan is an important tool, used along with the County's Comprehensive Plan and other regulatory tools, to guide decision-making about infrastructure and development in the study area (the area of New Castle County south of the Chesapeake and Delaware Canal).

This evening's activities are the first of three phases of developing the Southern New Castle County Master Plan.

Southern New Castle County Master Plan Process:



### **Visioning & Existing Conditions**

- Shape a Shared Vision and Goals
- Understand Current Conditions
- Define Criteria/Metrics of Plan Success

### **Alternatives Development**

- Confirm Vision, Goals, Metrics
- Define Alternative Plan Scenarios

### **Alternatives Evaluation Preferred Plan Selection**

- Evaluate Tradeoffs of Plan Alternatives
- Identify Desired Plan and Recommendations
- Refine and Finalize

The thoughts you share tonight and through the remainder of Tasks 1 and 2 will be used to develop a shared vision and goals for the future of southern New Castle County and help establish the criteria (metrics) through which plan alternatives in phases II and III can be evaluated.

Your input about your community will also help the technical and staff team better understand specific concerns and ideas you have for your community. We are here to listen, so please share and engage!

## Reference Information

The following are highlights of important information/data about the study area conditions. The points summarize information presented on the boards and in the presentation and should help frame the small group discussion and activities.

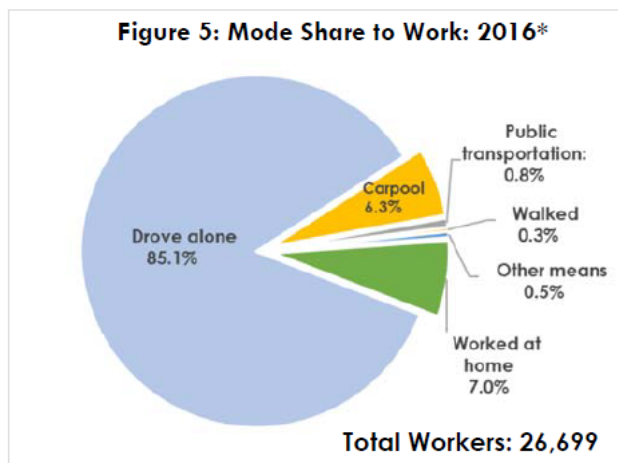
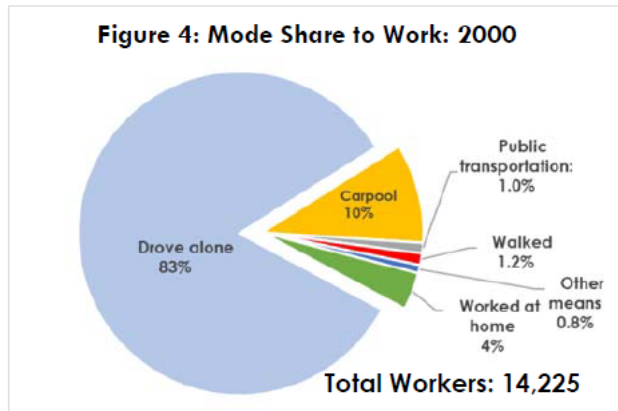
Additional details can be found in the existing conditions memo located on each table.

### Demographics/Jobs:

- **The population of southern New Castle County is growing faster than the rest of the County.**
  - In 1970 the total population of SNCC was 10,040, accounting for roughly 3% of the Countywide total; in 2015, SNCC's population grew to roughly 60,600 people, roughly 11% of the County population; by 2050, SNCC's total population is forecast to be 92,300, or 15% of the County population
  - All age groups have seen gains growing, however the 65+ age group grew at the fastest rate (228%) from 2000-2016; the 45-54 age group has been the largest growing age group since 2000, but as a result it will begin to increase the 65+ population beginning around 2025.
- **Northern New Castle County draws the largest share of workers who are residents of southern New Castle County**
  - Today, 4% of the total number of jobs in New Castle County are in the southern New Castle County study area, while the study area is home to around 11% of the total number of residents in the County.
  - Between 1990 and 2015, SNCC added over 7,000 new jobs (10,000 total jobs in 2015)
  - SNCC is adding over 10,000 jobs from 1970 to 2050, and the share of the jobs will grow from 1.2% in 1970 to 4.6% in 2050
  - Over half of the jobs fall within four employment types: Retail Trade, Construction, Food Service and Education
  - Most of the jobs (approx. 55%) are located within the Town of Middletown

### Transportation:

- **Along with increasing population and employment, traffic is increasing in SNCC**
  - Between 2000 and 2016, the mode share of those driving increased slightly, roughly 2% (approximately 85% of workers get to work by driving alone)
  - Public transportation represents less than 1% of the total mode to work for all of SNCC
  - The number of crashes has increased (along with the increase in traffic); A total of 6,171 crashes were reported from 2013-2017, of which nearly 1/3 were rear-end collisions.

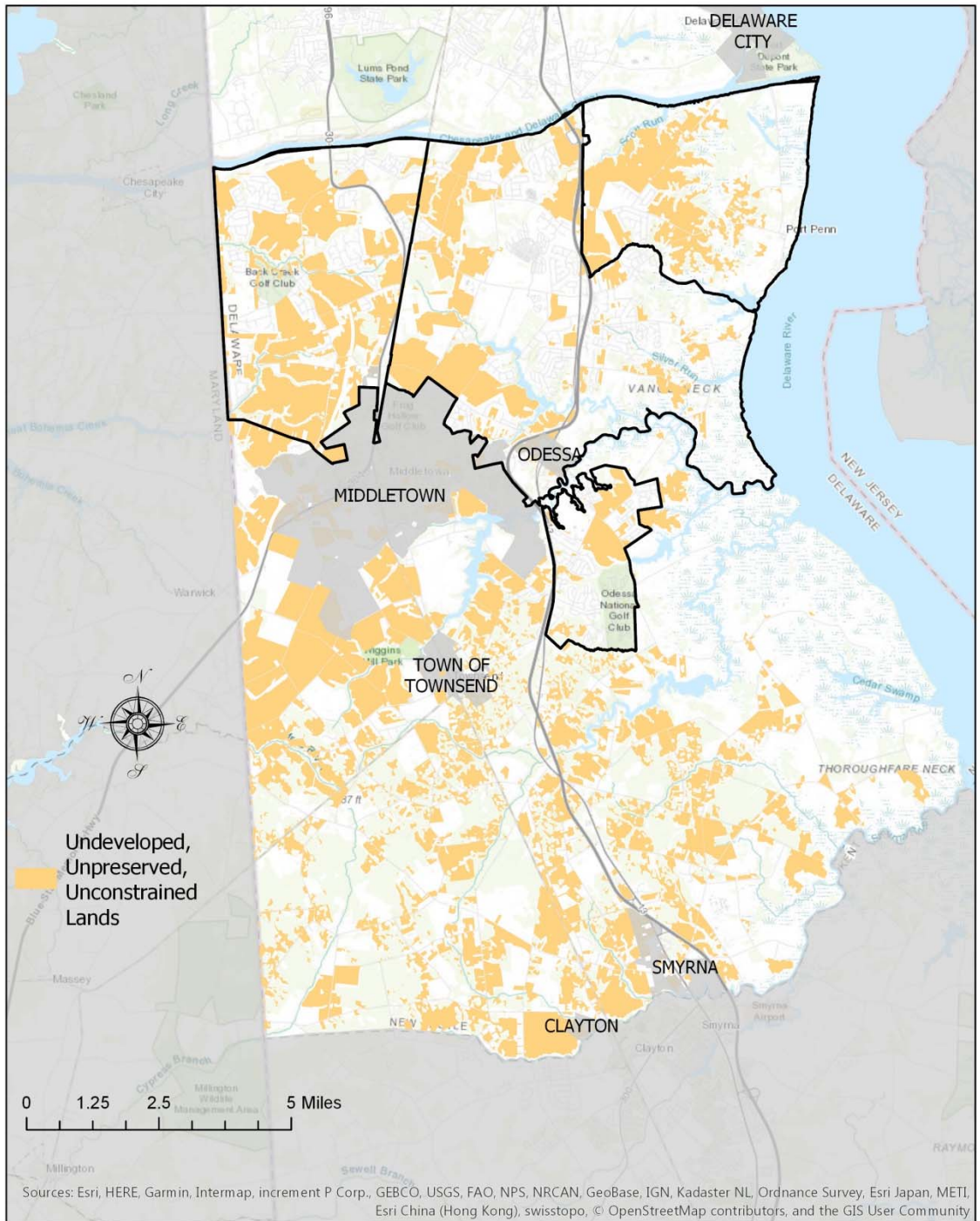


Sources: US Census, American Community Survey

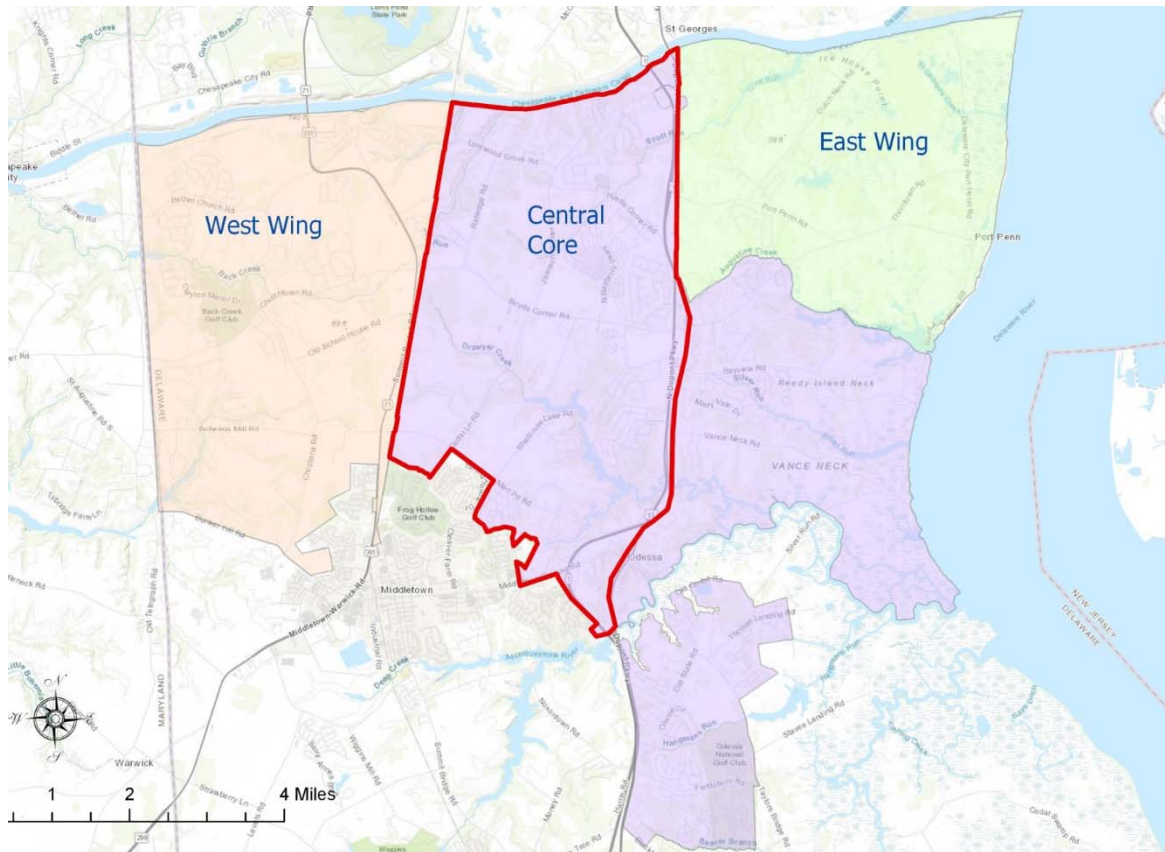
\* ACS figures from 2012-2016 5-year estimate

Land Use, Infrastructure, and Development:

- Over the last 60 years, the proportion of single family, detached dwellings constructed in Southern New Castle County has increased from only about 2% of the total countywide to nearly 50%.
- The Future Land Use Map designates more than 65% of the Southern New Castle County Master Plan Study Area as Resource and Rural Preservation; roughly 30% is designated for Low-density Residential” and New Community Development. The figure below shows in orange the land outside of the incorporated municipalities that could be available for development (i.e. undeveloped, unconstrained, unreserved).



- **The vast majority of the Southern New Castle County Master Plan Study Area is un-sewered.**
  - The New Castle County Department of Public Works currently provides sewer service for developments in the Core area (see figure below), Lea Era Farms and Rothwell Village (located in the West Wing). They also provide sewer service for Odessa and the Town of Townsend.



Other:

- Environment
  - Climate change, SLR and soils
  - Water quality
  - Air quality
  - Ecosystem / wildlife
- Quality of Life / Health
  - Schools / Education
  - Access to healthy food
  - Access to physical activity, parks
  - Safety
  - Equity





***Small Group Activity Packet***  
*Public Workshop #1 | Thursday, Jan. 31, 2019*

# WORKSHEET

Pages 7-9: follow and write your thoughts during the activities.

Page 10: exit survey to complete and turn in before you leave.

We encourage you to **turn in these pages to a facilitator at the end of the evening** as documentation of your thoughts and ideas for use by the technical and staff team.

**ACTIVITY 1: Draft Vision 1 (to complete right after presentation) \_\_\_\_\_ (5 min)**

Envision yourself, your family, your business, your organization in Southern New Castle County in 10 or 20 years...

Consider:

- What are the reasons you have remained in the community? What characteristics about the community will make it a great place for you, your family, your business / organization going forward?
- What do you like about your community in southern New Castle County today?
- What would make it better?

Write: Please list words or brief phrases that define that future you envision.

**ACTIVITY 2: Issue identification (5 rounds, organized around each of the categories) \_\_\_\_\_ (60 min)**

Consider: *Look at the poster board, think about what information you heard in the presentation and what you experience in your community and daily life in southern New Castle County, and then share your thoughts related to the corresponding categories on the next page.*

- What information that you heard in the presentation or saw on the boards around the room concern you?
- What specific issues come to mind when you think about this topic? (look at the examples on the board, if needed)

*Continued on next page...*



**Small Group Activity Packet**  
*Public Workshop #1 | Thursday, Jan. 31, 2019*

- When you think about your vision (from the previous activity), what specific things under the categories (Environment, Quality of Life, Community Character, Transportation, Economy) come to mind?

Write: On your own, please think about and list at least two specific issues on your mind related to each category...

Economy / Jobs: \_\_\_\_\_

\_\_\_\_\_

Environment: \_\_\_\_\_

\_\_\_\_\_

Community Character / Development Patterns: \_\_\_\_\_

\_\_\_\_\_

Transportation: \_\_\_\_\_

\_\_\_\_\_

Quality of Life / Health: \_\_\_\_\_

\_\_\_\_\_

Share/Record: each person in the group is given an opportunity to share his/her specific top issue; go around the table at least once; if time, go around a second and third time. (Each person should share his/her specific point in under 2 minutes.)





**Small Group Activity Packet**  
Public Workshop #1 | Thursday, Jan. 31, 2019

REPORT OUT: top results from all tables presented by category (25 min)

ACTIVITY 3: Issue prioritization by category (15 min)

Consider: *specific issues that came up among your group and the other tables (shown on the powerpoint slides and shared during report out)—which are most important to you and your vision for the future of southern New Castle County?*

Write: Take the color-coded ballot and write down the letter (A, B, C, etc.) shown corresponding to the specific issue (from the list on the screen) which you believe is most important.

**Purple:** Economy / Jobs

**Yellow:** Transportation

**Green:** Environment

**Orange:** Quality of Life / Health

**Pink:** Community Character / Development  
Patterns

Draft Vision 2: (at the end of small group session)

As you did at the beginning, think about your vision for the future, now that you've considered your own concerns and ideas in more detail and discussed with other community members at your table.

Vision Words/brief phrases:

Did your vision change?

---

Additional Notes

## EXIT SURVEY

1. Please check all that apply:

I live in the study area— address or nearest intersection (optional):  
\_\_\_\_\_

I work in the study area— address or nearest intersection (optional):  
\_\_\_\_\_

I operate an organization/business in the study area

I have other interest in the study area (please specify): \_\_\_\_\_

2. Of the many ideas heard tonight, which do you think are the most useful in achieving your vision for southern New Castle County?

3. Are there specific ideas not discussed tonight that you would like to share?

4. Would you like to be added to the Southern New Castle County Master Plan email list?

If Yes, please leave your contact information below.

Name \_\_\_\_\_ Email: \_\_\_\_\_