



# **WILMAPCO**

## **Public Advisory Committee**

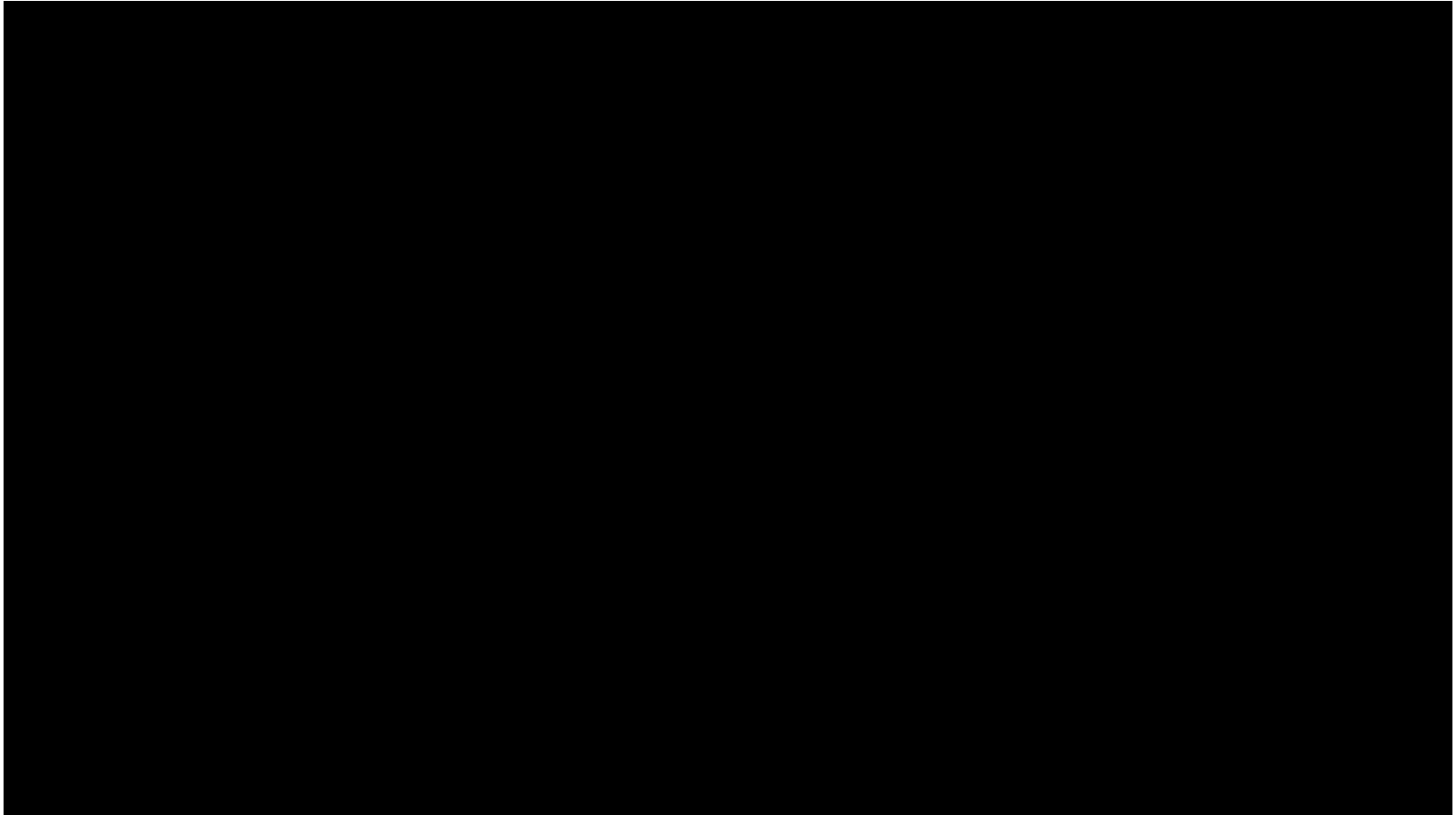
December 13, 2021



DEPARTMENT OF  
**LAND USE**

# Overview

# New Castle County NCC2050 Comprehensive Plan Overview



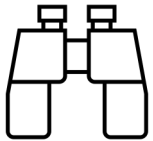
# The Comp Plan seeks to answer:



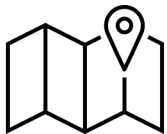
Where are we now?



Where are we going?



What do we want/need?



Where do we want it?



How do we get there?

...but we don't  
know exactly what  
the future holds.

# Forces of change

## More likely

- Regional and local economy:
  - shrinking manufacturing
  - rising “gig” economy
- Slow population & job growth / decline
- Aging population
- Increasing diversity
- Aging infrastructure
- Climate change

## More Uncertain

- Effects of climate change
- Technological change—especially transportation and energy
- Immigration

# Multiple ways to connect . . .

370 people attended  
4 virtual workshops  
fall 2020

~40 youth  
participated in  
Youth Planning  
Board

909 responses to  
multiple surveys

426 registrants for 2  
virtual Public  
Forums, Nov. 2020  
& July 2021

837 people attended  
5 “Deep Dive” virtual  
sessions spring 2021

24,574 visits to  
NCC@2050 website

88 Stakeholder Advisory Committee  
& Inter-agency Work Group members  
attended 4 meetings

# What we've heard . . .

- Broad support for preserving open space and agricultural land
- General agreement that more affordable housing is needed
- Desire for more walkable, mixed-use development, residential density, and housing type diversity –at least in some places in the County
- The need to address climate change action & social justice priorities
- Support for improving infrastructure.

# Themes



Livable Built Environment for All



Conservation and Preservation



Robust Economy



Sustainable Growth



Thriving Places and Community Character



Diverse Engagement



# DRAFT Priorities

# County's Role in Transportation Planning

- Major Land Developments/Rezoning (Traffic Impact Studies (TIS))
- Transportation Improvement Districts (TIDs)
- Subdivision/Land Development design (including street configurations, sidewalks/shared use paths, bike parking)
- Coordination with DeIDOT long-range planning, WILMAPCO Council representation, participation in various community plans and special studies (ex. RTP, NCC Bike Plan, etc.)

# DRAFT Priorities

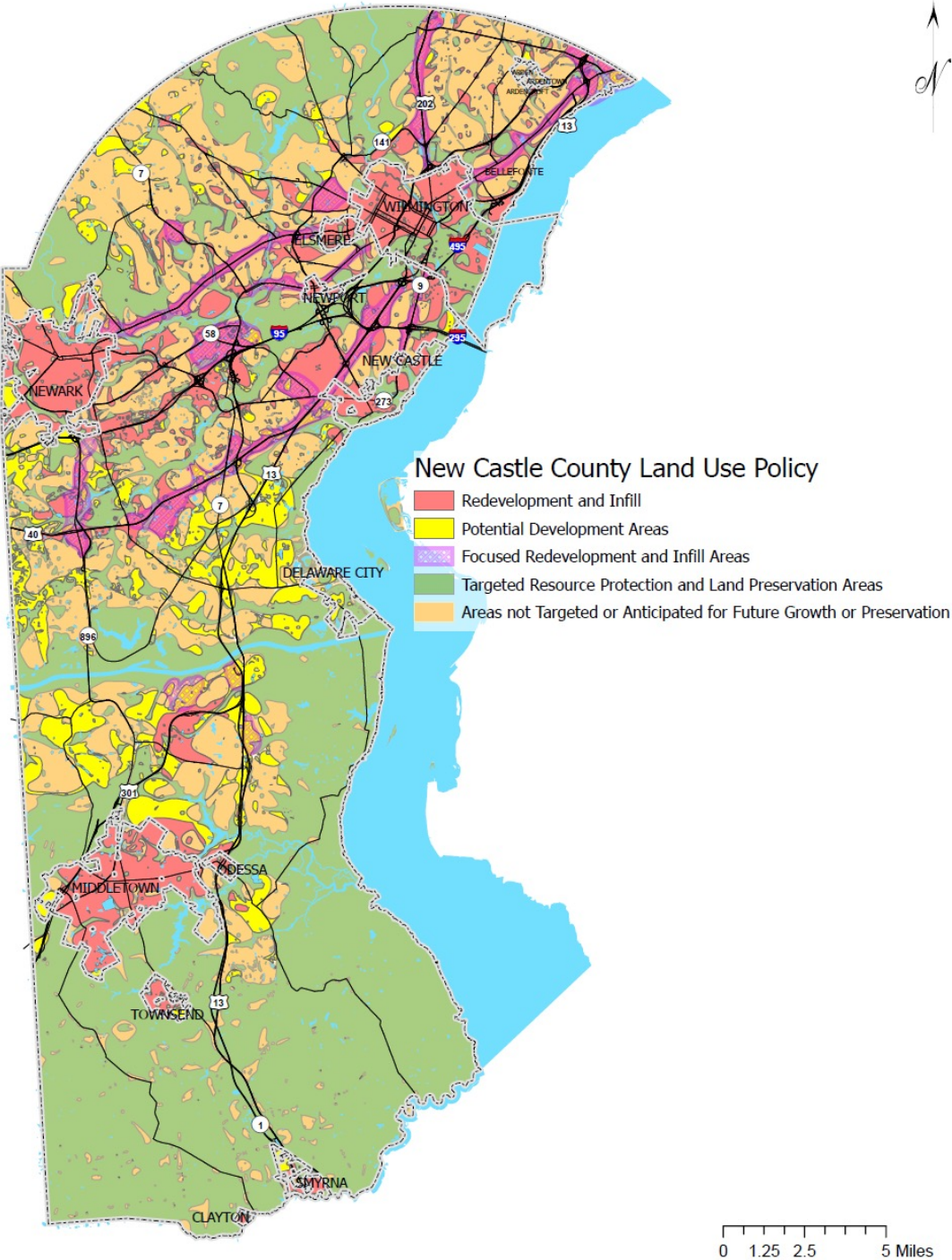
1. **Focus growth. Direct growth to Delaware's Level 1/Level 2 Investment Areas...**
2. Reduce risk and impact from hazards on low-income and minority communities.
3. Preserve at least 30% of land for open space in 30 years and improve ecosystem health.
4. **Lead in addressing climate change--prepare for clean energy future + become more resilient...**
5. Create an economic environment that supports a range of industries, including emerging industry...
6. As economic growth occurs, strive for equity...

# DRAFT Priorities

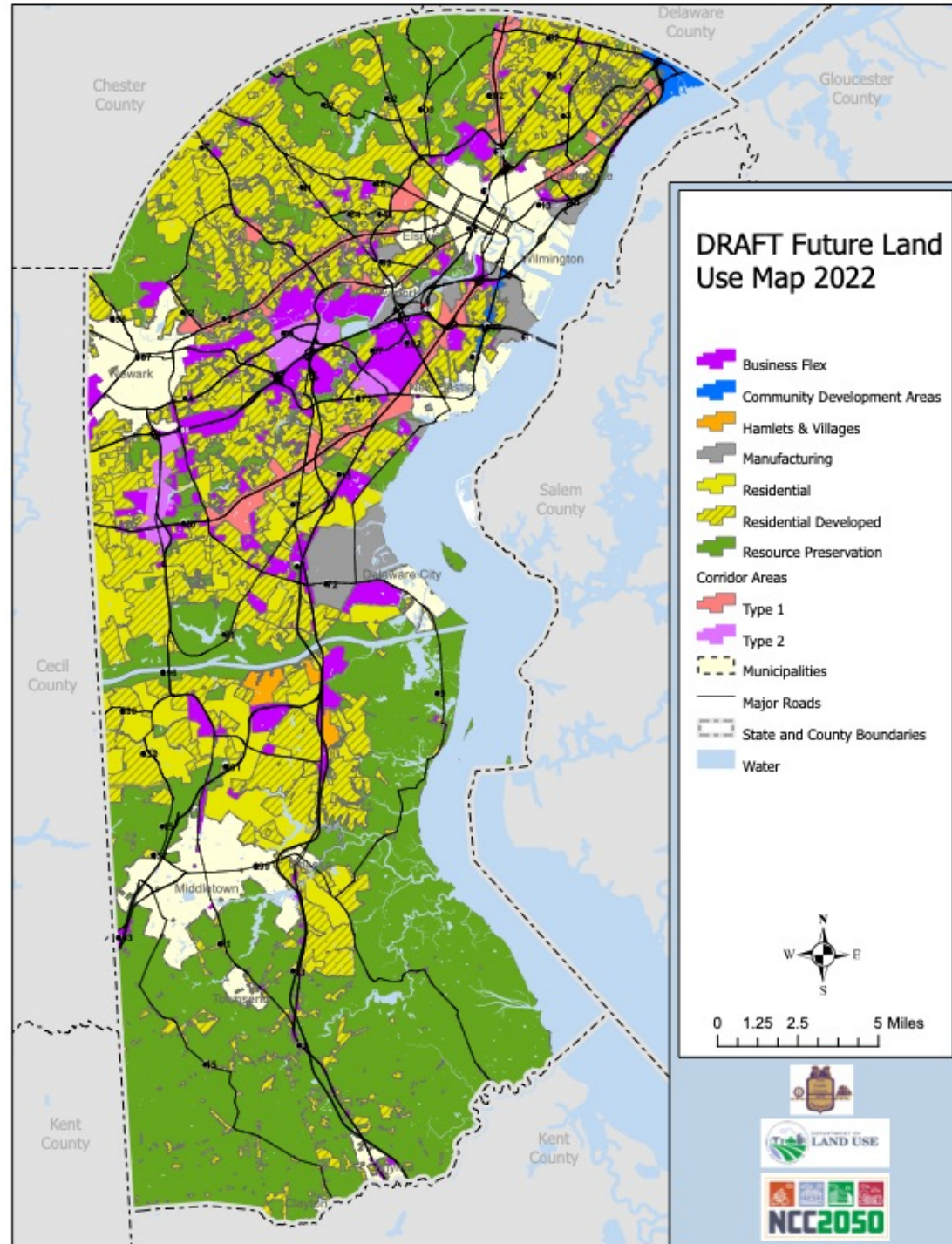
7. Ensure growth and change is coordinated and timed; decision-making leverages best/new data and technology.
8. Increase variety and range of price-points of safe, quality housing options for all, in a diversity of locations...
9. **Implement corridor, watershed-based, and other target-area-based revitalization (stormwater BMPs, trees/landscaping, greenways/trails).**
10. Increase diversity of engagement (community participants and staff)
11. Update the practice for re-zonings and Future Land Use Map (FLUM) changes

# Land Use Policy Map

DRAFT

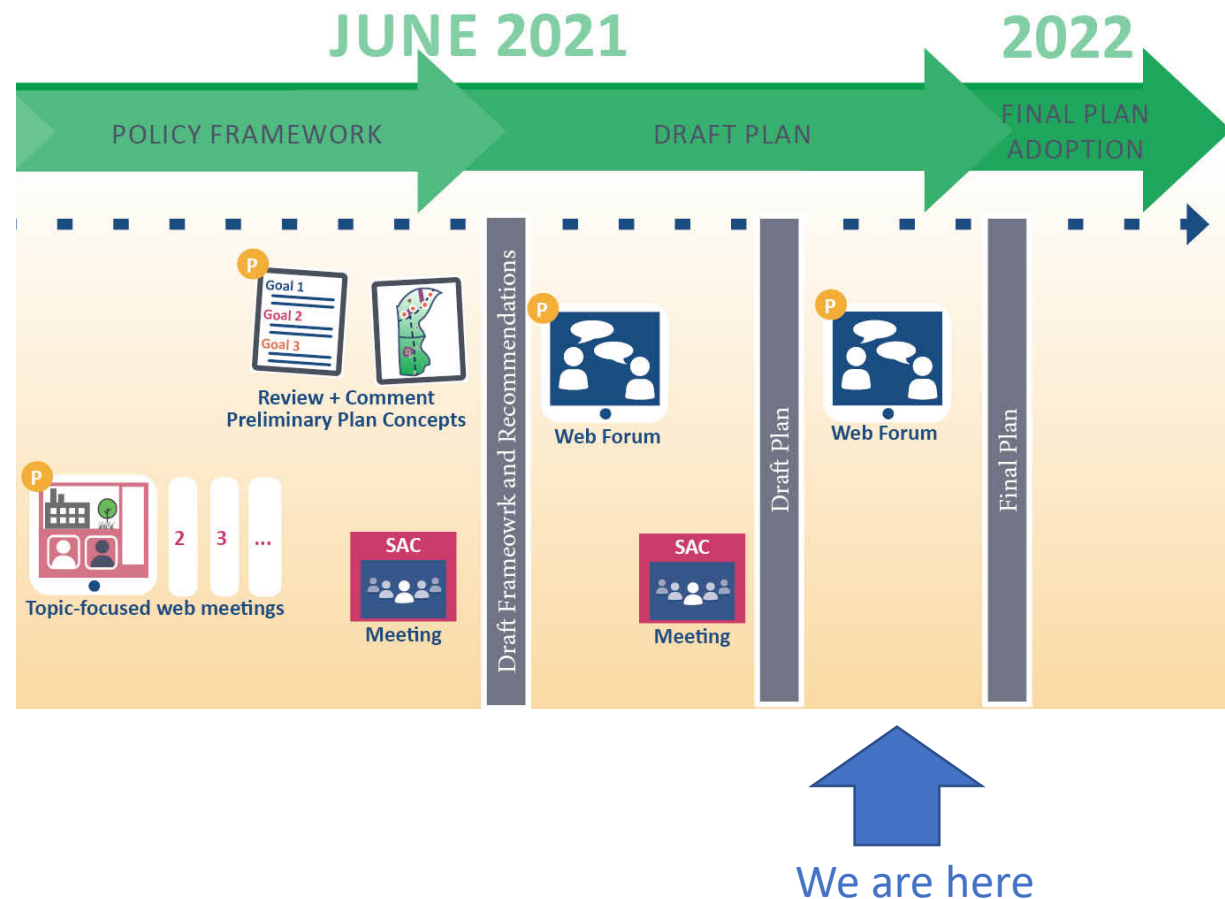


# Future Land Use Map





# What's next?



- |      |  |
|------|--|
| Oct  | Community meetings - highlights of draft plan + feedback |
| Nov  | Publish full draft plan to website                       |
| Dec  | Public Forum #3  |
| 2022 | Refinements and formal adoption process                  |

# Thank you!



We would be glad to take any questions/comments.

Website: **[NCC2050.newcastlede.gov](http://NCC2050.newcastlede.gov)**

Email: **[NCC2050@newcastlede.gov](mailto:NCC2050@newcastlede.gov)**