

# Ardens Walkable Community Workshop

Summary of Workshop and Draft Report

PAC Meeting  
October 17, 2022

# What are Walkable Community Workshops?

- Citizens become planners
  - Experts in their own community
- **Part 1: Presentation**
  - Sidewalk design, crosswalks, traffic calming, and other tools to improve walkability
- **Part 2: Walking Audit**
  - Participants survey the area
  - Identify issues and opportunities
- **Part 3: Mapping Exercise**
  - Group shares ideas for improving walkability
  - Ideas documented in the report



# Ardens Walkable Community Workshop

- Monday, September 8 at the Candlelight Theatre
- About 37 attendees
- Focused on the intersection of Harvey and Veale Roads





# Mapping Exercise





# Mapping Exercise



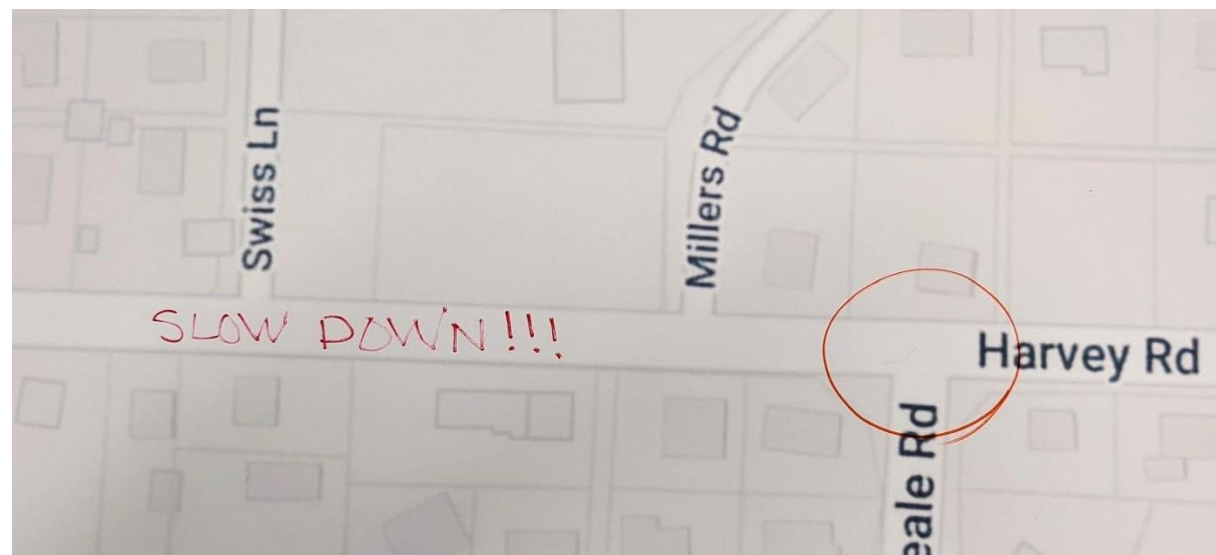


# Mapping Exercise



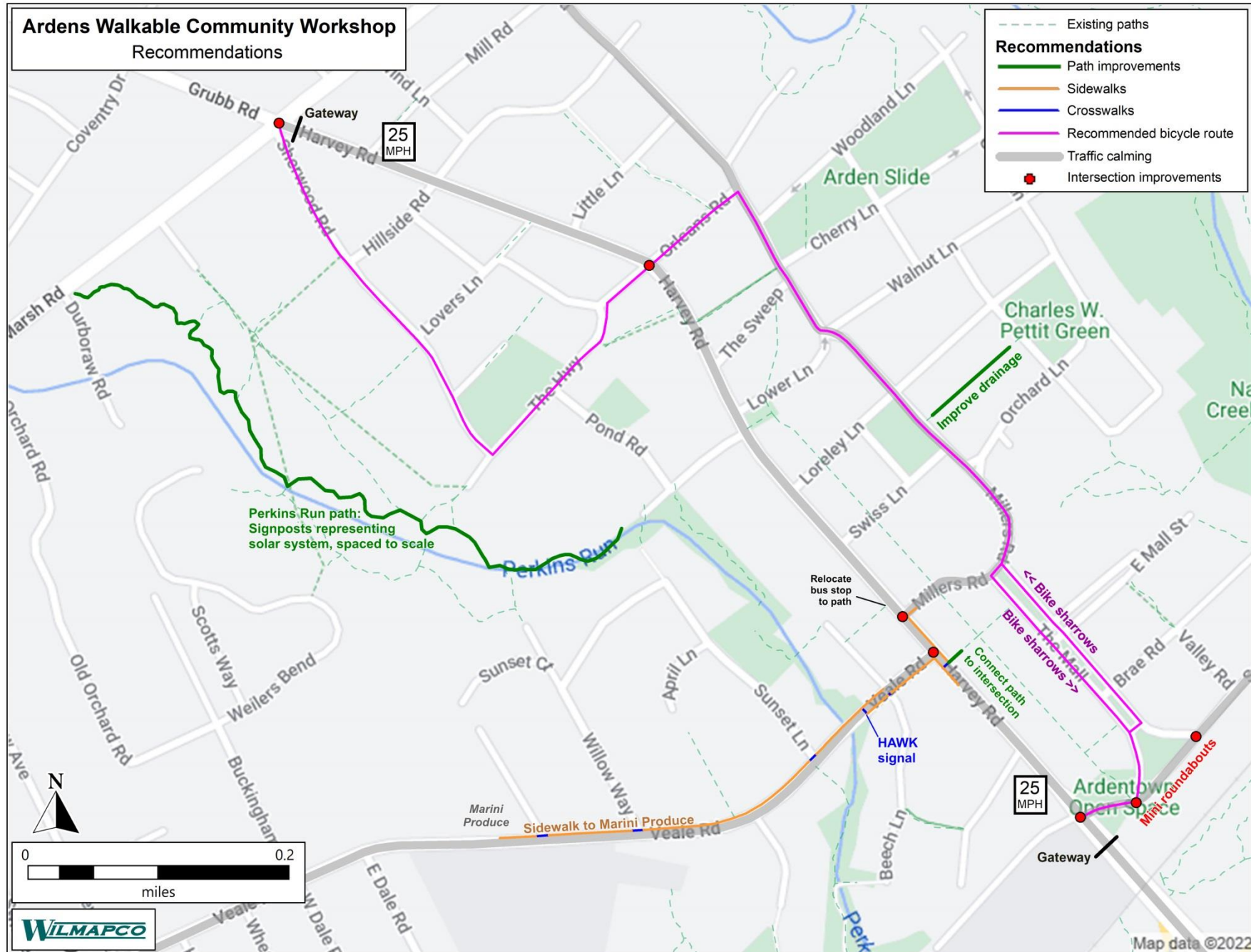


# Mapping Exercise



# Walkability Ideas

- Traffic calming measures
- Improvements to the path network
- Sidewalks and crosswalks
- Intersection improvements
- Recommended bike route





# Harvey Road Improvements

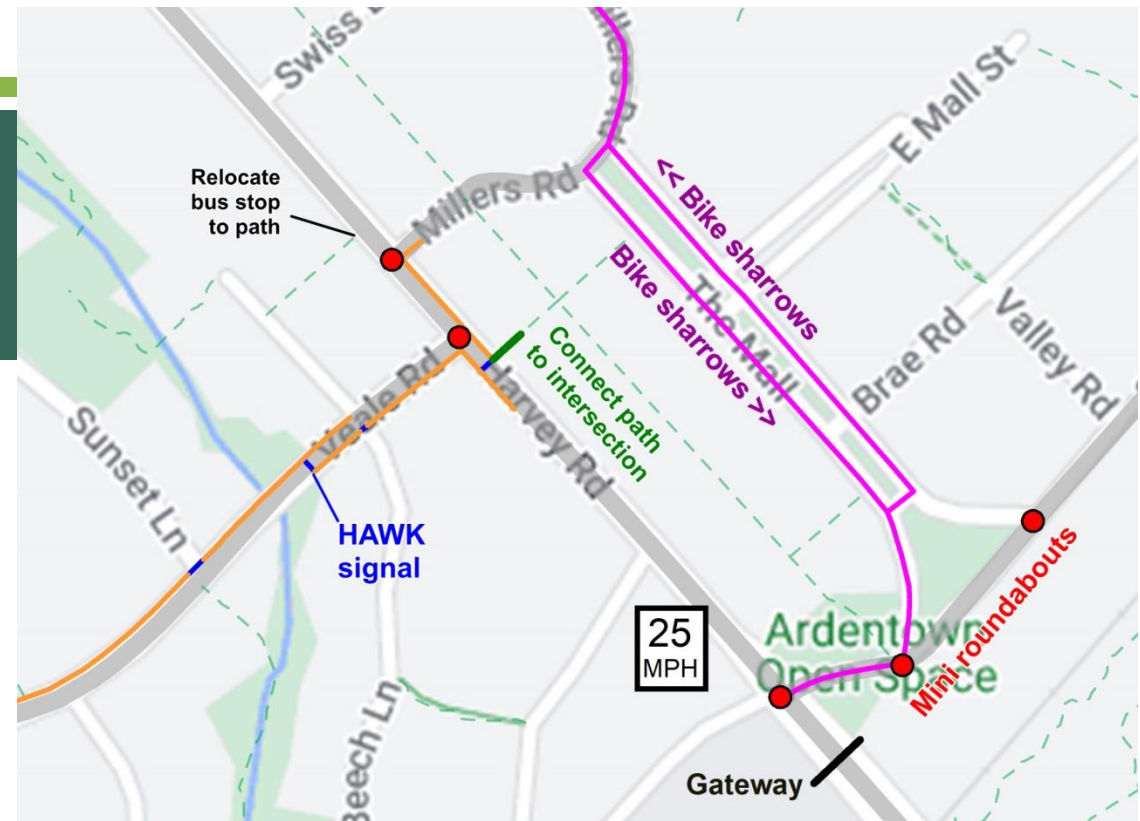
- Calming traffic on Harvey Road was the top concern
- Reduce speed limit (ranges 25-45mph) to 25mph
- More frequent and improved crossings
  - Where paths meet Harvey Road
- Narrow perceived width
  - Planters in sections with wider shoulders
- Pedestrian-scale lighting





# Intersection Improvements

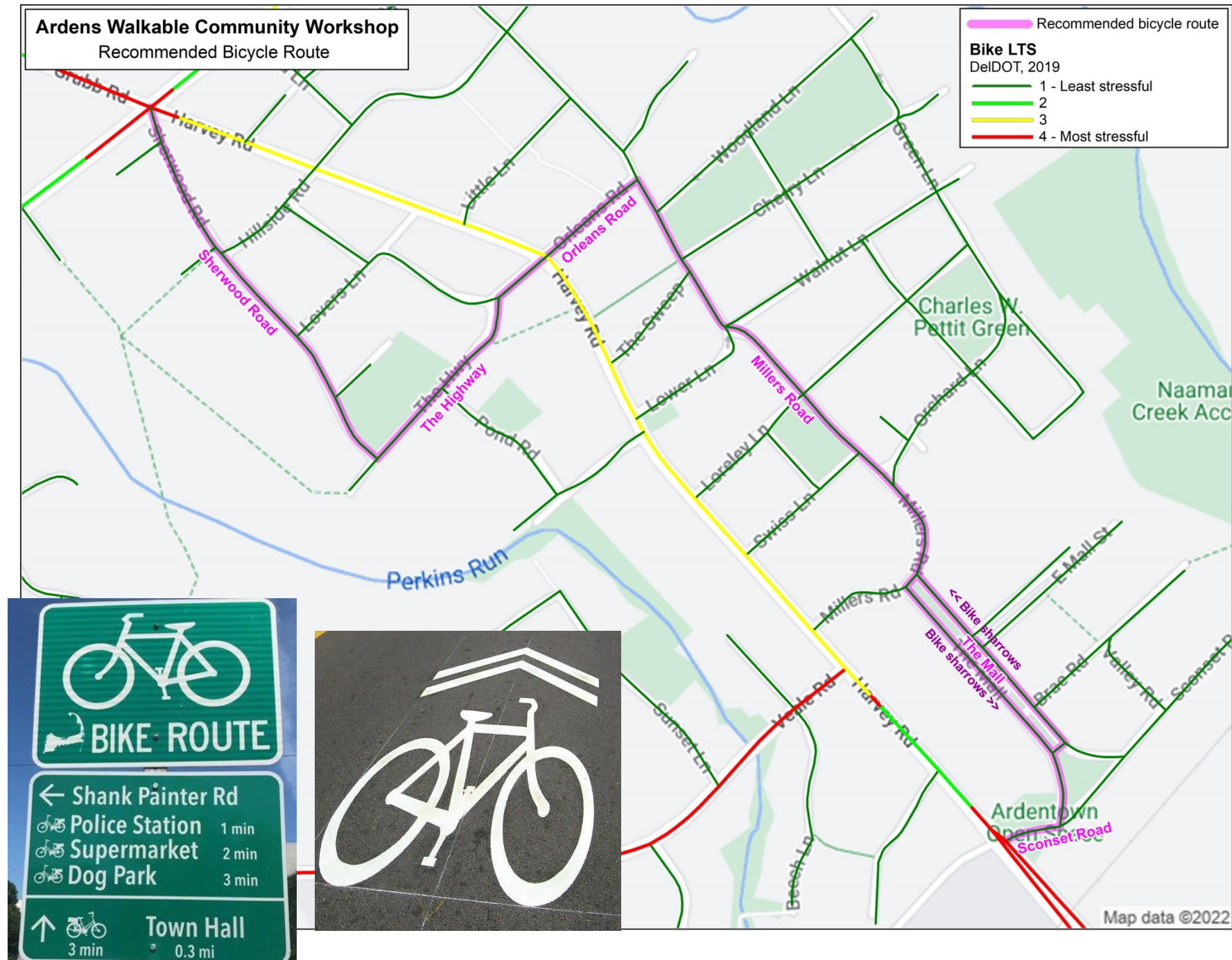
- Mini roundabouts
  - Sconset Road and the Mall (2 intersections) – currently no traffic control devices
- Harvey Road intersections
  - Sconset, Veale, Millers, Orleans, Marsh – all signalized
  - Ideas: “no turn on red” signs, “yield to peds” signs, all-way stop triggered by ped push buttons, crosswalks at all legs, red light enforcement cameras, HAWK signals





# Recommended Bicycle Route

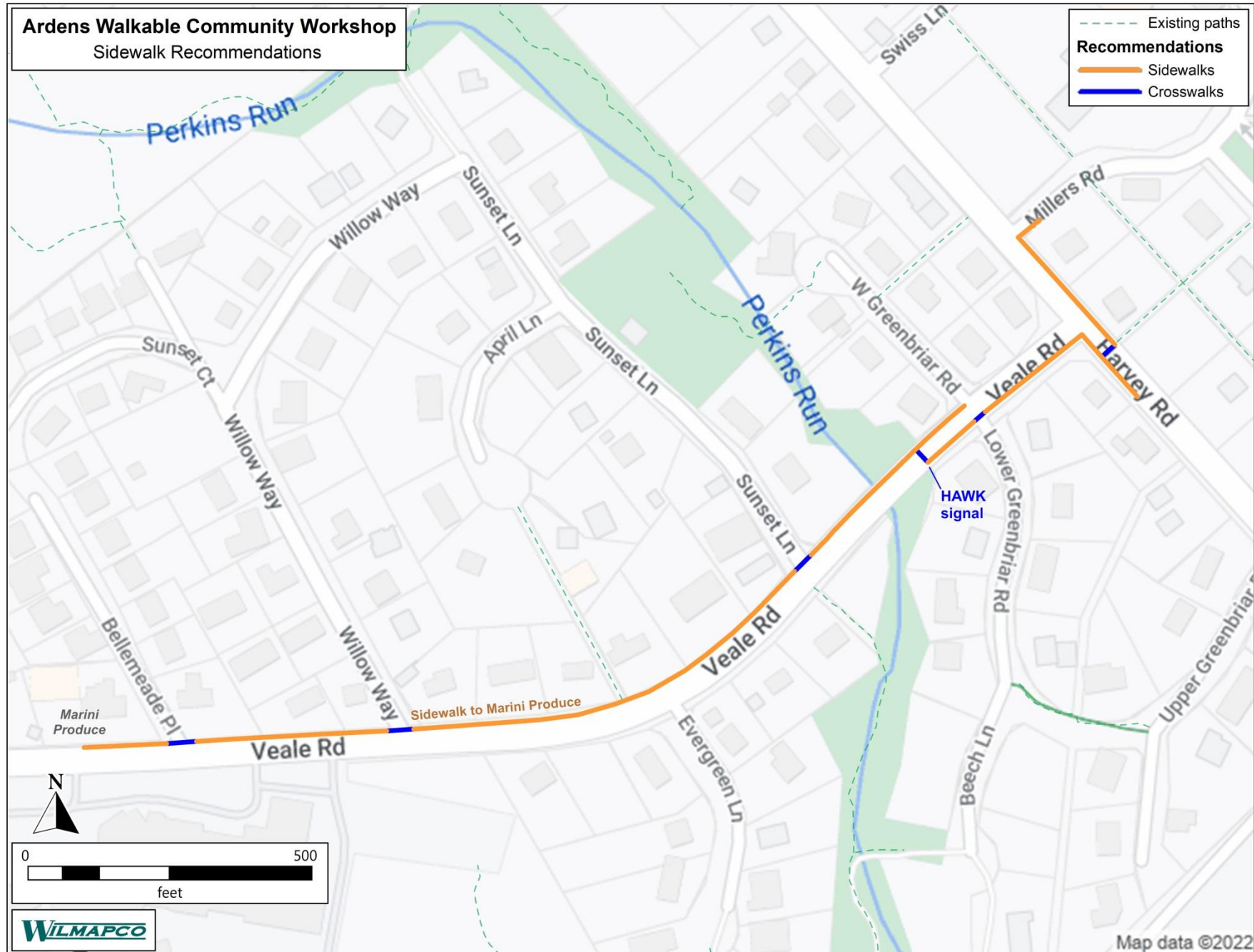
- Harvey Road would be the most natural and direct route
  - Considered high stress for biking (DeIDOT's Bike LTS)
- Alternative route – entirely on low stress neighborhood streets
- Only adds 0.2 miles
- Signage and sharrows
- Interim solution
- Guide cyclists by many historic buildings, destinations, and natural areas





# Sidewalks

- The Ardens mostly lack sidewalks
  - Rustic, historic nature
  - Most streets are comfortable to walk on alongside traffic
- Approaching intersection of Harvey + Veale
- Along Veale Road to Marini Produce





# Advisory Shoulders

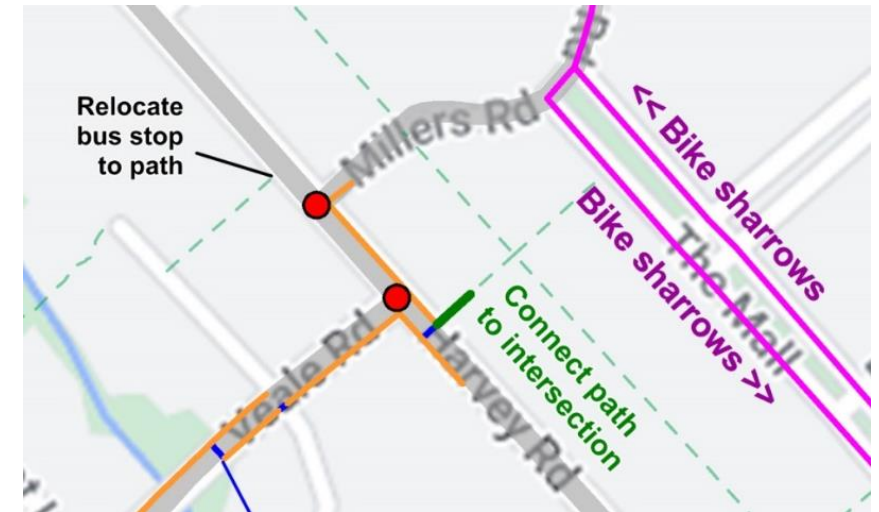
- Alternative solution to sidewalks
  - Harvey, Veale may have insufficient right-of-way
- Center lane shared for vehicles in both directions
- Shoulders for walking and biking
- Drivers yield and enter shoulder to allow oncoming traffic to pass
- Common in Europe
- DelDOT must submit a Request to Experiment
- Could be accompanied by HAWK signals or RRFBs
  - Path crossings





# Path Improvements

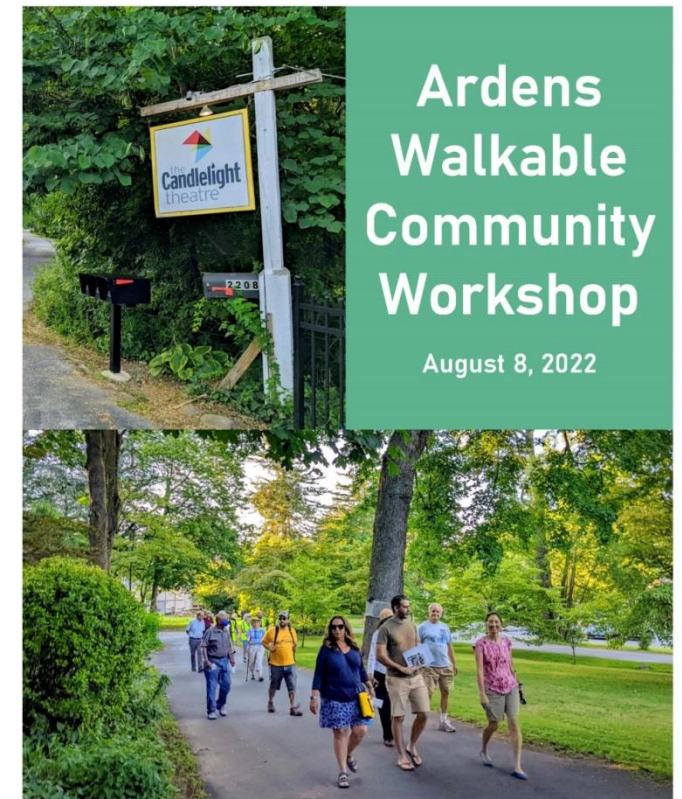
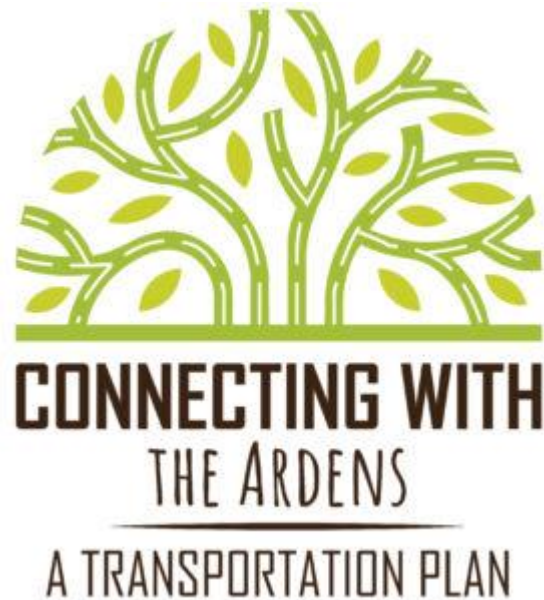
- Each path has a unique name
  - Most paths lack signage
  - Some paths are not clearly visible
- Install signage for all paths
  - Improve wayfinding and give each path its own identity
- Path crossings – crosswalks and pedestrian push buttons
- Improve drainage issues on paths
- Improve connection from path leading to Harvey + Veale intersection





## Next Steps

- Ardens Transportation Plan
- Ardens WCW Report will help inform the planning process
- Serves as public feedback for the plan
- May incorporate ideas, refine and expand recommendations
- Public Workshop
  - Tuesday, October 25, 6-8pm
  - Buzz Ware Village Center
  - WCW Report will be on display



**WILMAPCO**



# Questions?

For more information on  
Walkable Community Workshops:  
[wilmapco.org/walkable](http://wilmapco.org/walkable)

Jake Thompson  
[jthompson@wilmapco.org](mailto:jthompson@wilmapco.org)



## Ardens Walkable Community Workshop

August 8, 2022



**WILMAPCO**