

# Newport Transportation Study – Monitoring Committee Meeting #2

June 21, 2022

Welcome



# Agenda

- ✓ Introductions
- ✓ Goals
- ✓ DeIDOT Project Updates
- ✓ Truck Traffic MacArthur Drive and Lindberg Avenue
- ✓ DTC Updates
- ✓ Train Station Updates
- ✓ New Castle County Updates
- ✓ Wilmington Bicycle Loop - Delaware Greenways
- ✓ Community Feedback/Discussion
- ✓ Next Steps

# Monitoring Committee

Newport Advisory Committee		
Elected Officials: Name	District	Email
Spiros Mantzavinos	Senate District 7	<a href="mailto:Spiros.Mantzavinos@delaware.gov">Spiros.Mantzavinos@delaware.gov</a>
John Walsh	Senate District 9	<a href="mailto:John.Walsh@delaware.gov">John.Walsh@delaware.gov</a>
John L Mitchell	House District 13	<a href="mailto:John.L.Mitchell@delaware.gov">John.L.Mitchell@delaware.gov</a>
Kimberly Williams	House District 19	<a href="mailto:Kimberly.Williams@delaware.gov">Kimberly.Williams@delaware.gov</a>
Michelle Mac Donald	Mayor of Newport	<a href="mailto:mich.macdonald@gmail.com">mich.macdonald@gmail.com</a>
Name	Company	Email
Richard Piendak	Advanced Pavement Group	<a href="mailto:r.piendak@apgc.com">r.piendak@apgc.com</a>
Dave Tiberi	Emergency Response Protocol	<a href="mailto:dtiberi@erpsafety.com">dtiberi@erpsafety.com</a>
Tim Love	Sun Chemical	<a href="mailto:Timothy.Love@sunchemical.com">Timothy.Love@sunchemical.com</a>
Patrick Oakes	APEX	<a href="mailto:poakes@apexpiping.com">poakes@apexpiping.com</a>
J. Stevens	APEX	<a href="mailto:jstevens@apexpiping.com">jstevens@apexpiping.com</a>
Brian Kirtley	Sun Chemical	<a href="mailto:brian.kirtley@sunchemical.com">brian.kirtley@sunchemical.com</a>
Greg Buckley	Buckley's Auto Care	<a href="mailto:greg.buckley2@gmail.com">greg.buckley2@gmail.com</a>
William Keller	Air Liquide	<a href="mailto:william.keller@airliquide.com">william.keller@airliquide.com</a>
Sarang Gadre	Air Liquide	<a href="mailto:Sarang.gadre@airliquide.com">Sarang.gadre@airliquide.com</a>
Vince Ruff	Community	<a href="mailto:vinceruff47@gmail.com">vinceruff47@gmail.com</a>
Wendy King	Newport Town Manager	<a href="mailto:wendyking99@yahoo.com">wendyking99@yahoo.com</a>
Chief Wohner	Newport Chief of Police	<a href="mailto:mark.wohner@cj.state.de.us">mark.wohner@cj.state.de.us</a>
Mike Spencer	Town Comissioner/Vice Mayor	<a href="mailto:mikespencer100@comcast.net">mikespencer100@comcast.net</a>
Cooper Bowers	DelDOT	<a href="mailto:Cooper.Bowers@delaware.gov">Cooper.Bowers@delaware.gov</a>
Peter Haag	DelDOT	<a href="mailto:Peter.Haag@delaware.gov">Peter.Haag@delaware.gov</a>
John Sisson	DTC	<a href="mailto:john.sisson@state.de.us">john.sisson@state.de.us</a>
Tricia Arndt	DE Office of State Planning	<a href="mailto:Tricia.Arndt@delaware.gov">Tricia.Arndt@delaware.gov</a>
Thomas Harvey	Harvey Hanna	<a href="mailto:ETHarvey@harveyhanna.com">ETHarvey@harveyhanna.com</a>
Bill Lower	Harvey Hanna	<a href="mailto:wlower@harveyhanna.com">wlower@harveyhanna.com</a>
Matt Rogers	New Castle County Land Use	<a href="mailto:Matthew.Rogers@newcastlede.gov">Matthew.Rogers@newcastlede.gov</a>
Alysse Bortolotto	New Castle County Chamber of Commerce	<a href="mailto:bortolottoa@ncccc.com">bortolottoa@ncccc.com</a>

## Goals

### Newport Transportation Study

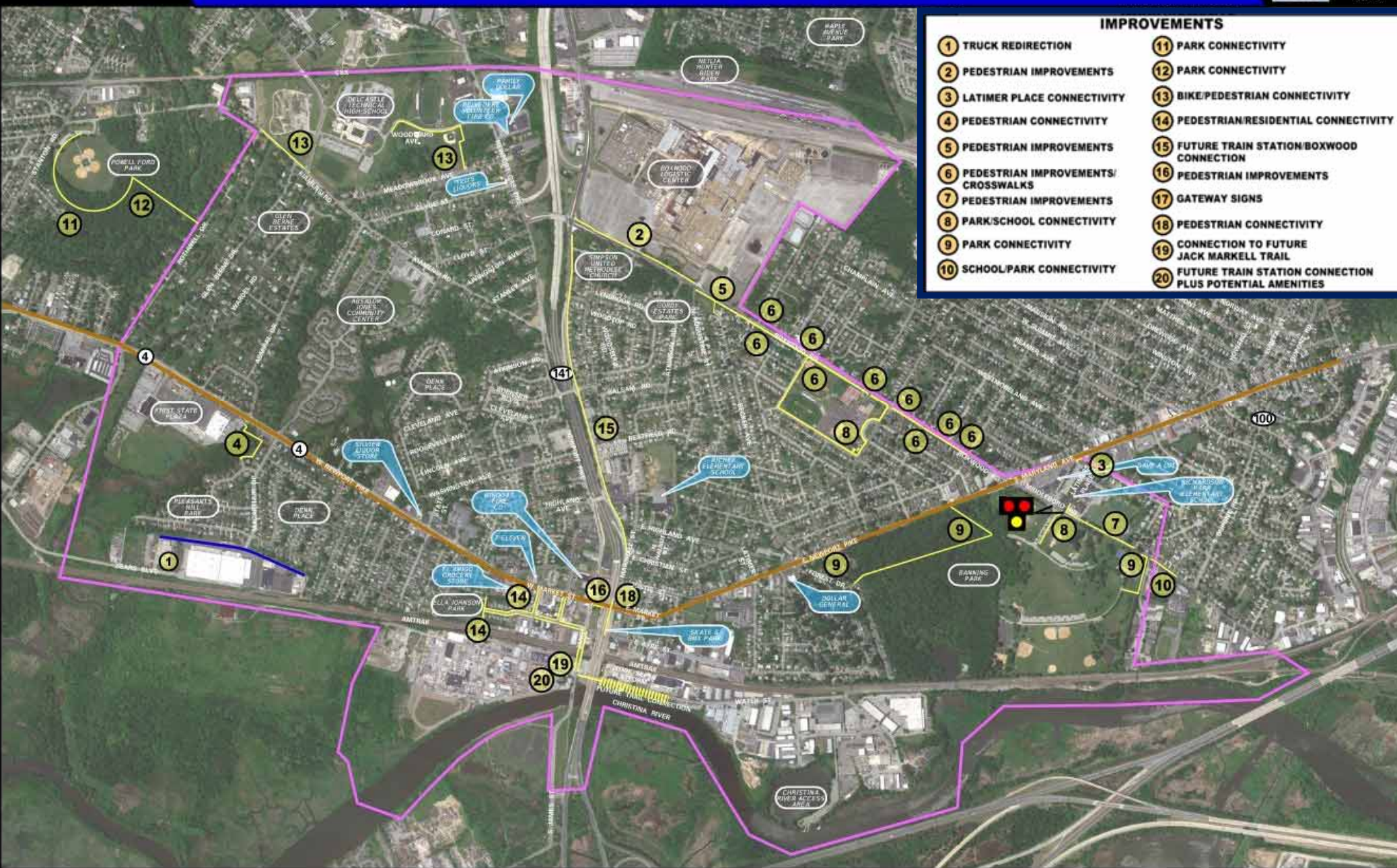
1. Improve Newport's multi-modal capacity. Newport is striving to become a more walkable, bikeable town.
2. Assess re-opening the Newport Train Station to commuter rail service.

### Monitoring Committee

1. Review updates in and around Newport in comparison to the Newport Transportation Study
2. Prioritize recommendations in the Newport Transportation Study

## Monitoring Committee

- Land development activity
- Traffic growth
- Transit
- Pedestrian movements
- Safety
- Master plan project status and prioritization
- Major project outside of study area
- Tasks for next year and follow ups



IMPROVEMENTS	
1 TRUCK REDIRECTION	11 PARK CONNECTIVITY
2 PEDESTRIAN IMPROVEMENTS	12 PARK CONNECTIVITY
3 LATIMER PLACE CONNECTIVITY	13 BIKE/PEDESTRIAN CONNECTIVITY
4 PEDESTRIAN CONNECTIVITY	14 PEDESTRIAN/RESIDENTIAL CONNECTIVITY
5 PEDESTRIAN IMPROVEMENTS	15 FUTURE TRAIN STATION/BOXWOOD CONNECTION
6 PEDESTRIAN IMPROVEMENTS/CROSSWALKS	16 PEDESTRIAN IMPROVEMENTS
7 PEDESTRIAN IMPROVEMENTS	17 GATEWAY SIGNS
8 PARK/SCHOOL CONNECTIVITY	18 PEDESTRIAN CONNECTIVITY
9 PARK CONNECTIVITY	19 CONNECTION TO FUTURE JACK MARKELL TRAIL
10 SCHOOL/PARK CONNECTIVITY	20 FUTURE TRAIN STATION CONNECTION PLUS POTENTIAL AMENITIES



# Newport River Trail Concept Design

## Newport River Trail Concept Design





# Newport River Trail Concept Design

## Project Schedule



Newport River Trail Concept Design – February 2022





## DelDOT Maintenance Concrete Patching

SR 4

- Limestone Road to Glenside Avenue
- August to end of 2022
- Concrete patching and minimal curb replacement





## DelDOT Pave and Rehab Improvements

### SR 4

- Limestone Road to Augustine Street
- Construction 2023
- Concrete patching, driveway replacements, guardrail, and ADA Ramps
- 5 signal upgrades to improve pedestrian connectivity
- Concrete median removal with lane reconfiguration to accommodate a bicycle lane in each direction
- Sidewalk improvements
- Public workshop this fall 2022

**Mike Beulah**

Pavement Management

Department of Transportation

Email: [mike.beulah@delaware.gov](mailto:mike.beulah@delaware.gov)



## DeIDOT Street Lighting Analysis

### Boxwood Road

- Centerville Road to SR 4
- No lighting Centerville Road to Rochelle Place
- New street lighting moving into design
- Schedule not available at this time





## DelDOT Preemption and/or Advanced Warning Systems

Preemption and/or advanced warning systems

- Blocked roadways due to the usage of the railroad crossings
- Locations: Stanton Road, SR 14 NB and SB, Boxwood Rd, SR 2 EB and WB, Old Capital Trail EB and WB, Newport Gap Pike SB, and Centerville Rd SB
- All locations are part of FY23 program





## DelDOT Marshallton Roundabout Project

- Old Capital Trail intersections with Newport Road and Stanton Road
- Bike/Ped improvements
- Result of the Marshallton Circulation Study (2014)
- Project Timeline:
  - Construction Start Date: 2025
  - Construction End Date: 2026





## DelDOT Marshallton Roundabout Project

3

### Project Purpose and Need

- This project is a result of the Marshallton Circulation Study completed by WILMAPCO in 2014
- Provide intersection improvements at the Old Capitol Trail intersections with Newport Road and Stanton Road
- Address concerns with high volume cut through traffic and restore a more walkable connected community
- Rehabilitate/replace structures within the project limits



# DelDOT Marshallton Roundabout Project Stanton Road





# DelDOT Marshallton Roundabout Project Newport Road





## DelDOT Marshallton Roundabout Project More Information

[Deldot.gov/projects/](http://Deldot.gov/projects/)



Studies



Planning & Design



Advertising / Bid / Award



Under Construction



Old Capitol Trail, Newport Road to Stanton Road



## Trucks MacArthur Drive

- Survey finished mid-summer
- Funding available to study connections
- Funding for design/construction pending





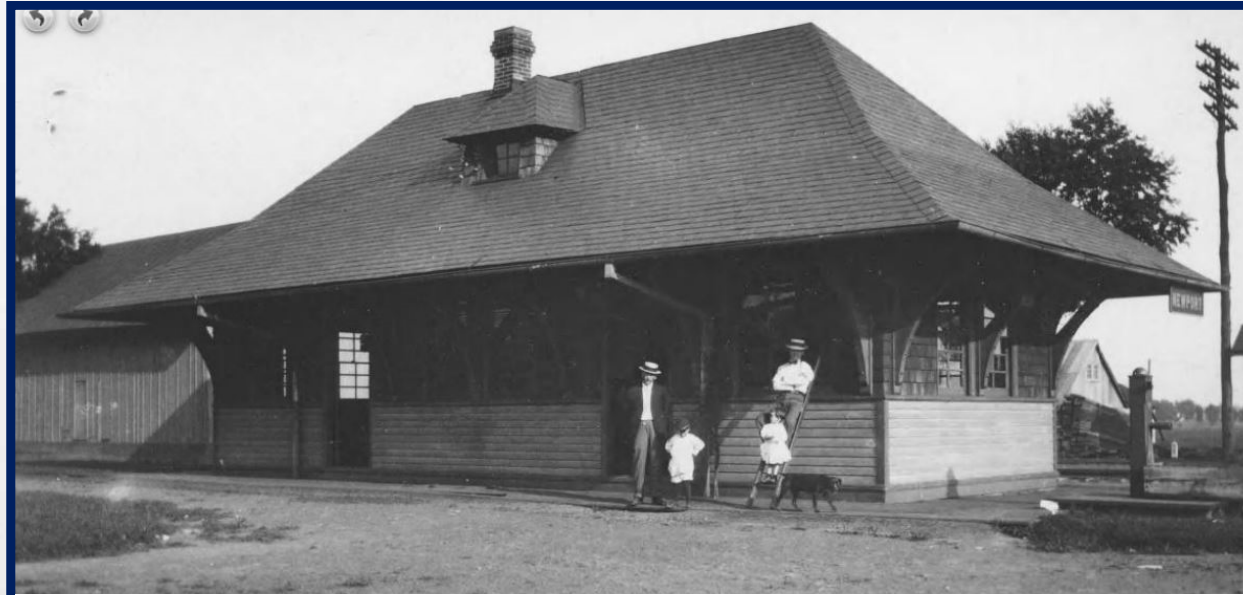
## Updates

- Ridership
- Routes
- Amenities





## Train Station Updates



Newport Train Station (Photo Courtesy Hagley Museum Archives)



# **2022 Update to the NCC Comprehensive Plan and The Newport Area**

June 21, 2022



[NCC2050.newcastlede.go](http://NCC2050.newcastlede.go)

v

# Why We Plan



**A COMPREHENSIVE PLAN  
IS THE STATE-MANDATED  
FOUNDATION FOR COUNTY  
DECISION-MAKING.**



- » Shapes the places in which we live, work, and play.
- » Directs the public services, infrastructure (streets, sidewalks, sewer services, and more) and capital investments that make our communities livable.
- » Guides the use, density, and design of homes and buildings, directly shaping the physical appearance of our neighborhoods while simultaneously preserving environmental, historical, and cultural assets.

# NCC2050 Themes:



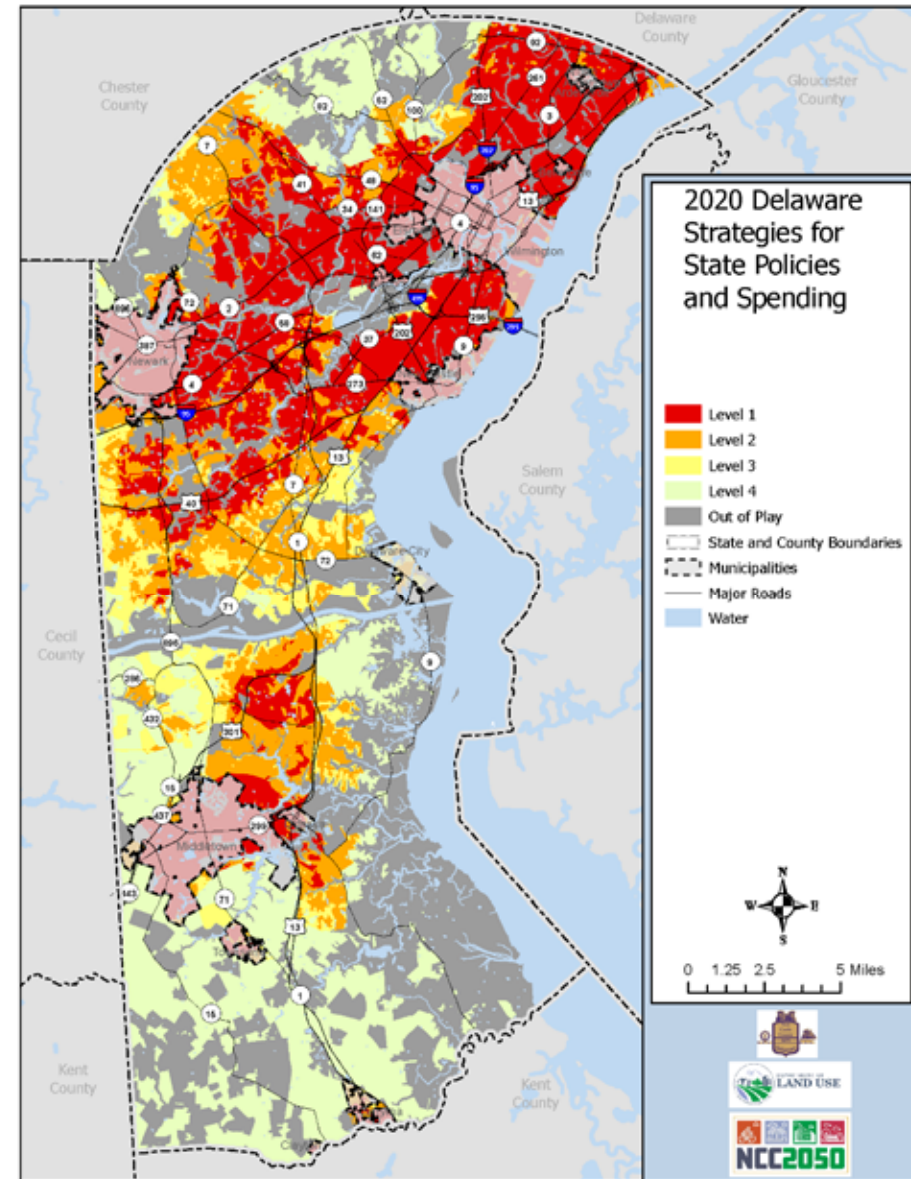
- Livable Built Environment for All
- Conservation and Preservation
- Robust Economy
- Sustainable Growth
- Thriving Places and Community Character
- Diverse Engagement

# NCC2050 is guided by the State Strategies

Focus growth. Direct growth to Delaware's Level 1 (most urban/developed) and Level 2 (suburban) Investment Areas, as outlined in [2020 Delaware Strategies for State Policies and Spending](#) (achieving at least 70% of growth in Level 1 and 90% in Levels 1 and 2). (Objectives 2.3, 5.3, 10.1, and more)



[strategies.stateplanning.delaware.gov](http://strategies.stateplanning.delaware.gov)

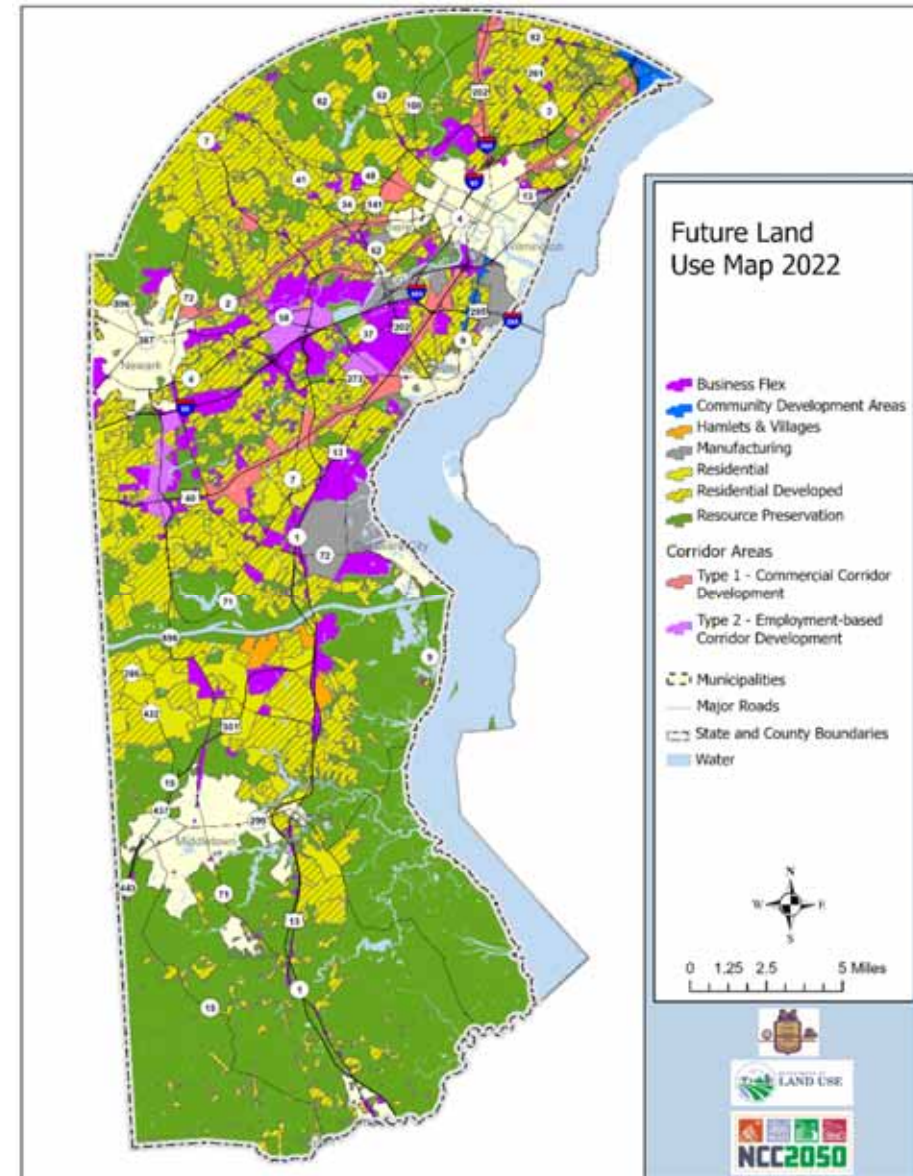


# Future Land Use Map and Newport



## ***Type 1 (Commercial Corridor Development)***

- Tight integration of jobs and services with adjacent residential neighborhoods. Future development should seek to bolster this relationship.
- Non-residentially zoned land and uses – All development and redevelopment of these sites should be oriented and designed in a manner that creates massing and design for the corridor consistent with the vision and provisions of the Guiding Principles in the Unified Development Code for Commercial Corridor Development.

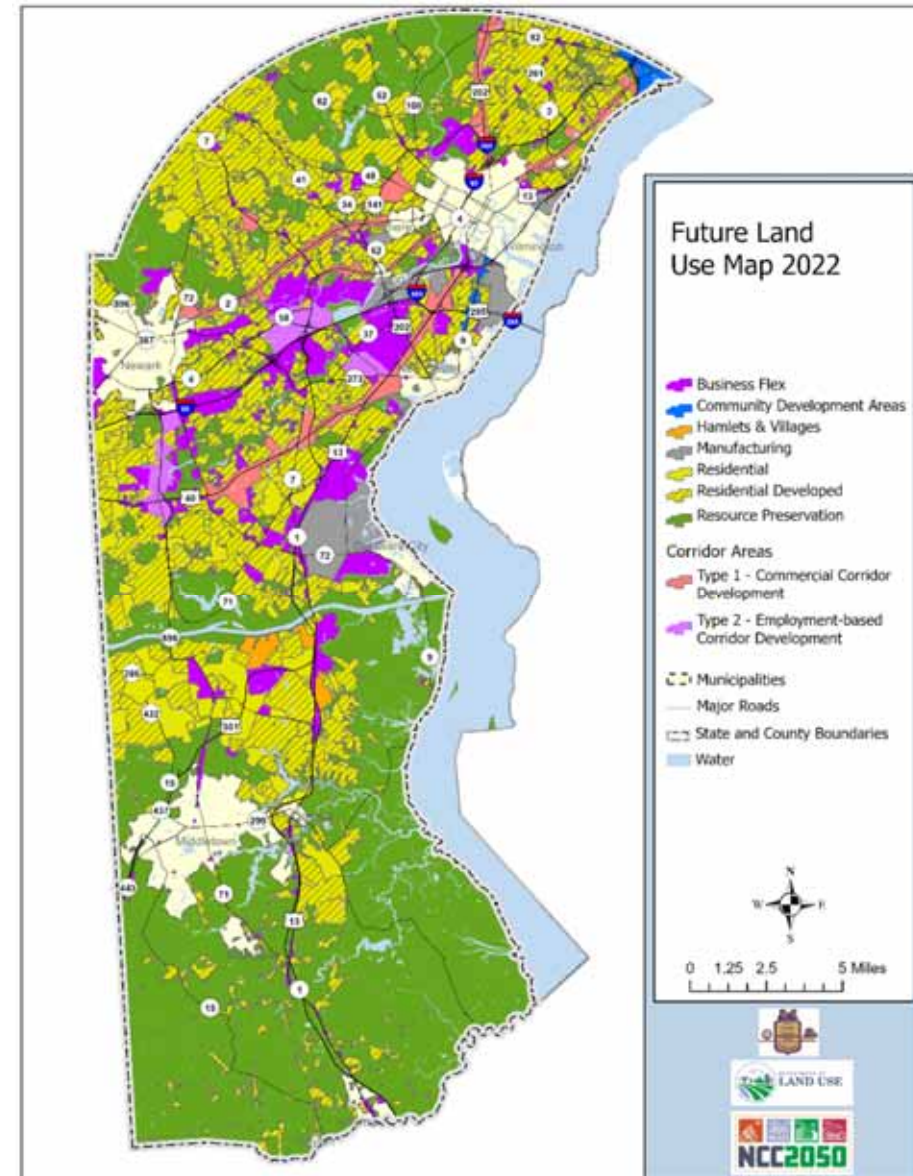


# Future Land Use Map and Concord Pike



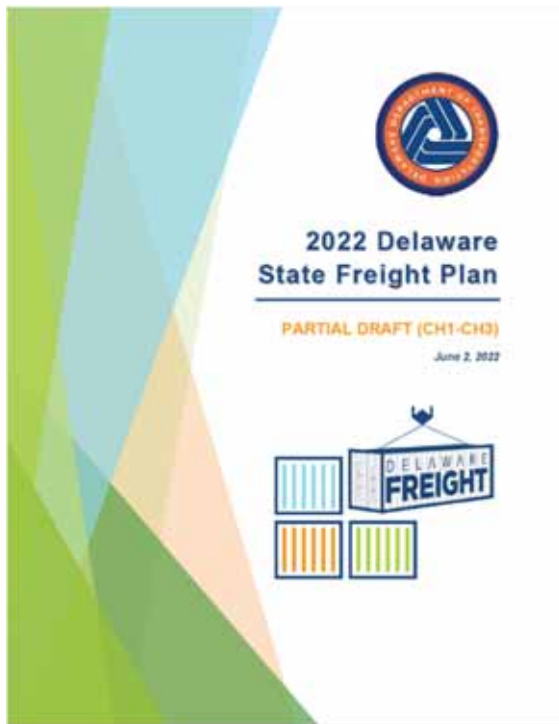
## ***Type 1 (Commercial Corridor Development)***

- Residential Zoned Land and Uses – Rezoning is appropriate when the proposed development is conducive in form and function to the Commercial Corridor Development (Guiding Principles) of adjacent non-residential land, while being sensitive to the context to neighboring residential development.
- Environmental, Agricultural and Historically significant land

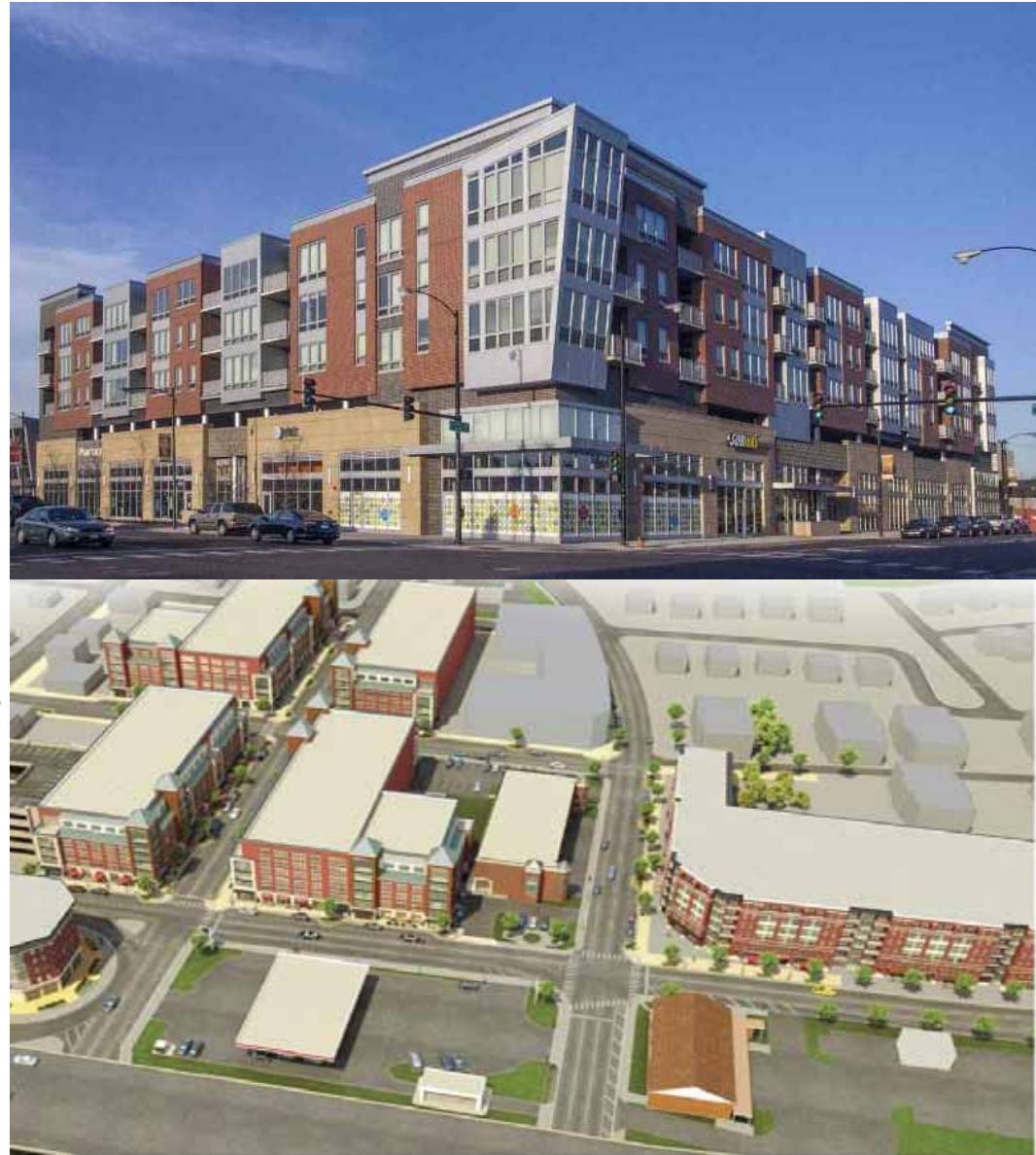


# Freight

NCC2050 looks to build on the 2022 Delaware State Freight Plan



Increase the variety and range of safe, quality housing options for all, in a diversity of locations; focus on revitalizing and preserving areas already developed, while responsibly guiding future development in a manner that is consistent with adjacent communities. (Objectives 4.1, 4.2)



Enact land use policies and regulations that incentivize infill and redevelopment in and around job centers.  
(Strategy 5.3.2)



# Transit Oriented Development

Transit Oriented Development (TOD) is an approach to planning with the focus on locating and developing compact walkable, pedestrian-oriented, mixed-use communities in conjunction with high quality public transit facilities. While the uses are important so too is careful consideration of the built form and its relationship with adjacent communities. TODs offer the potential to address important problems facing the county including traffic congestion, affordable housing, air pollution, and sprawl. Successful Transit Oriented Development takes a variety of different forms having a diversity of uses complimentary to its context.



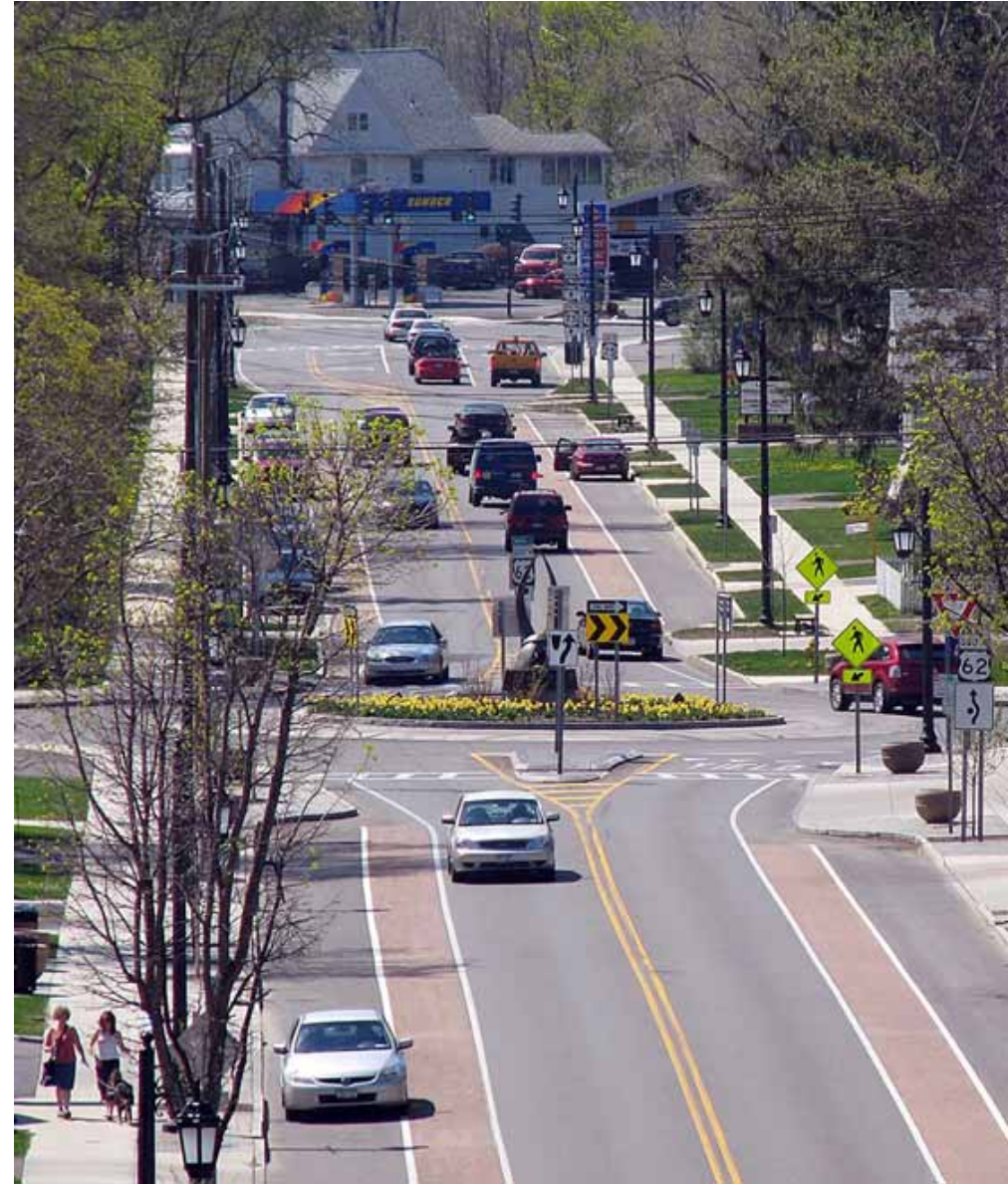
# Complete Streets

Streets should be designed with the needs of pedestrians, cyclists, and public transit, in addition to cars.



# CCED

Provides a legislated framework for local governments to develop land use policies to facilitate higher intensity, more urban development patterns in coordination with DeIDOT driven transportation planning and capital investment explicitly to prioritize transit, bike, and ped mobility.



# CCED

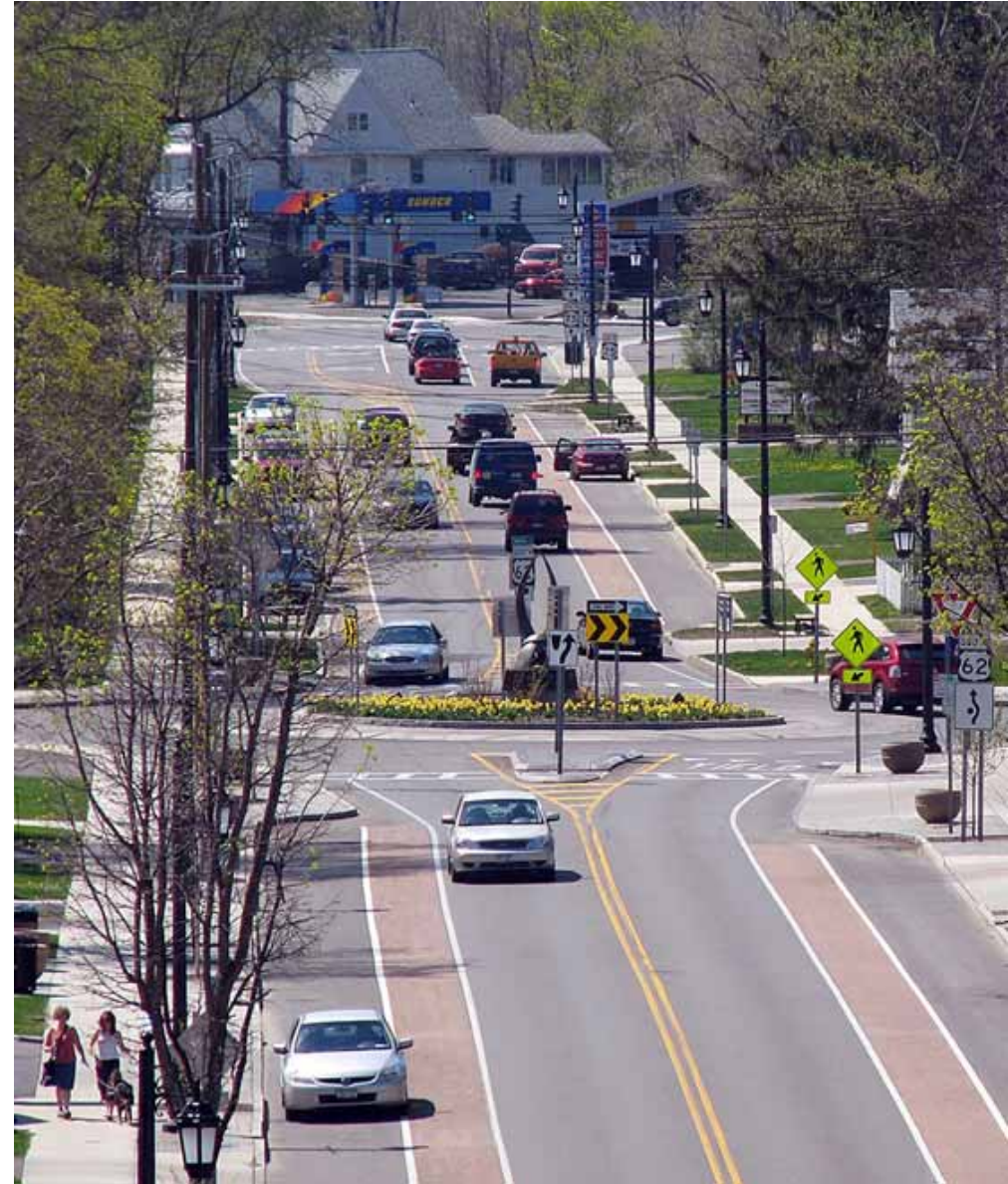
## Intergovernmental Effort between:

- The Town of Newport
- New Castle County
- DeIDOT



# CCED

- Develop Walk/Bike/Transit Plans for the district
- Develop capital projects to realize the plans
- Boost CCED projects in capital prioritization
- Make all roads 25 mph
- Refrain from road capacity projects
- No off-street parking requirements





**Formal  
plan  
adoption  
process is  
underway**

- ✓ Delaware State Cabinet Committee – March 2, 2022
- ✓ New Castle County Council ordinance introduction – March 8, 2022
- ✓ New Castle County Land Use Committee – March 15, 2022
- ✓ Delaware PLUS – March 23, 2022
- ✓ New Castle County Planning Board Public Hearing– May 3, 2022
- ✓ Delaware State Cabinet Committee (Extension) – June 2, 2022
- ☐ New Castle County Planning Board Business Meeting - June 21, 2022
- ☐ **Delaware State Cabinet Committee – July 18, 2022**
- ☐ New Castle County Land Use Committee – July 19, 2022 (Tentative)
- ☐ Full New County Council consideration – July 26, 2022 (Tentative)
- ☐ Governor’s Certification



**Thank you!**



**Website: [NCC2050.Newcastlede.gov](http://NCC2050.Newcastlede.gov)**

**Email: [NCC2050@newcastlede.gov](mailto:NCC2050@newcastlede.gov)**

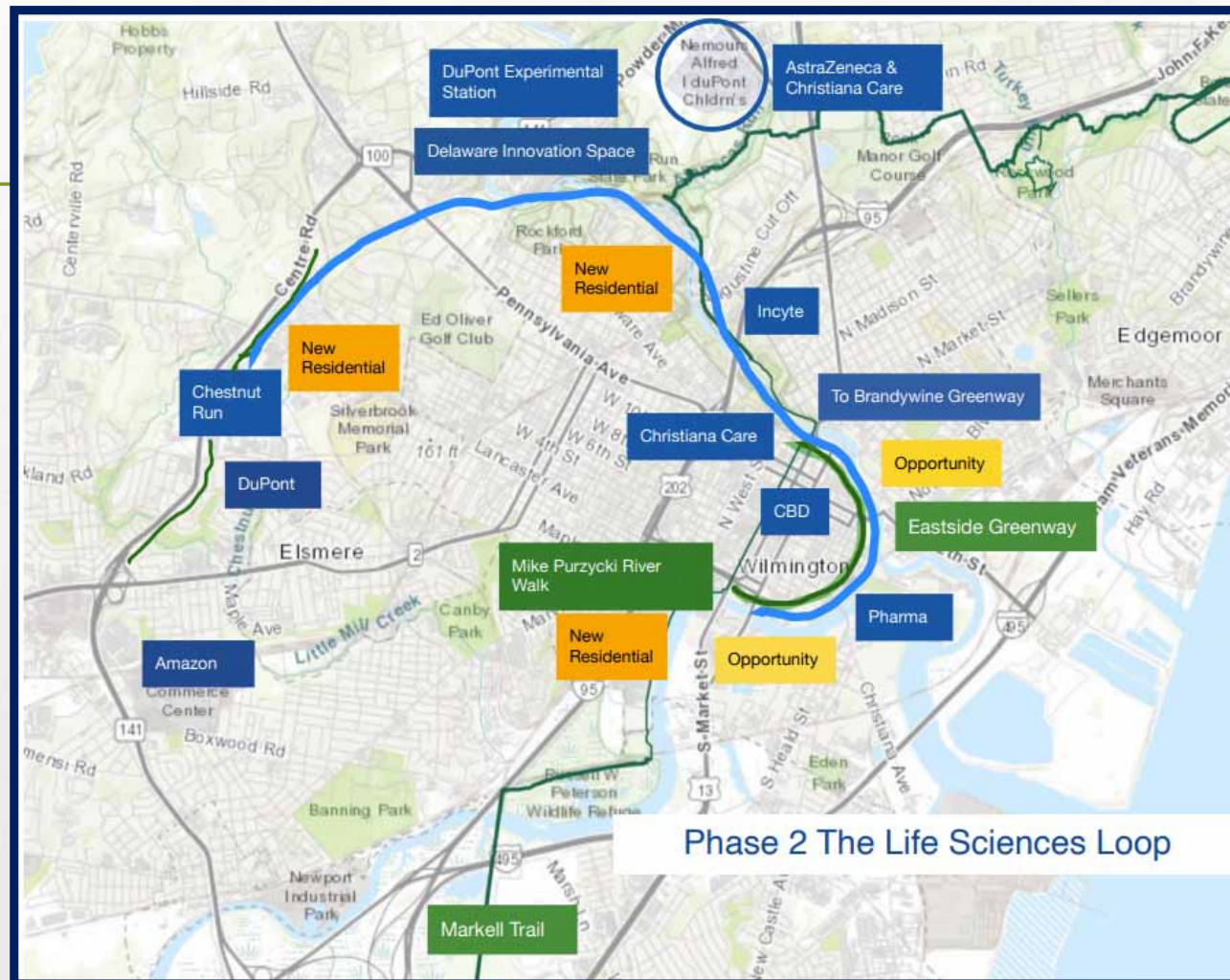


# The Wilmington Loop Delaware Greenways

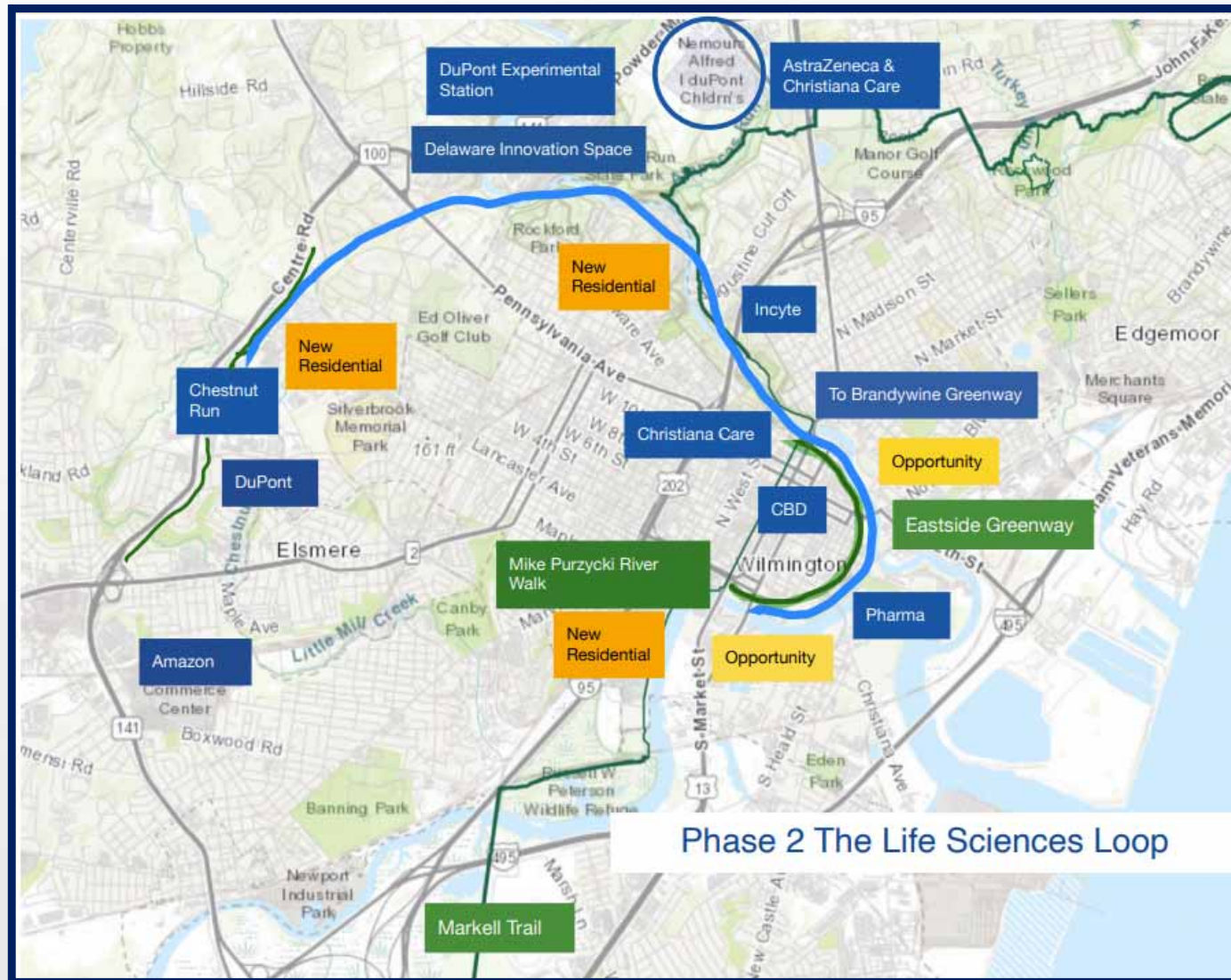
Existing - 7.8 miles  
Not Existing - 7.8 miles  
Wilmington Loop - 15.6 miles



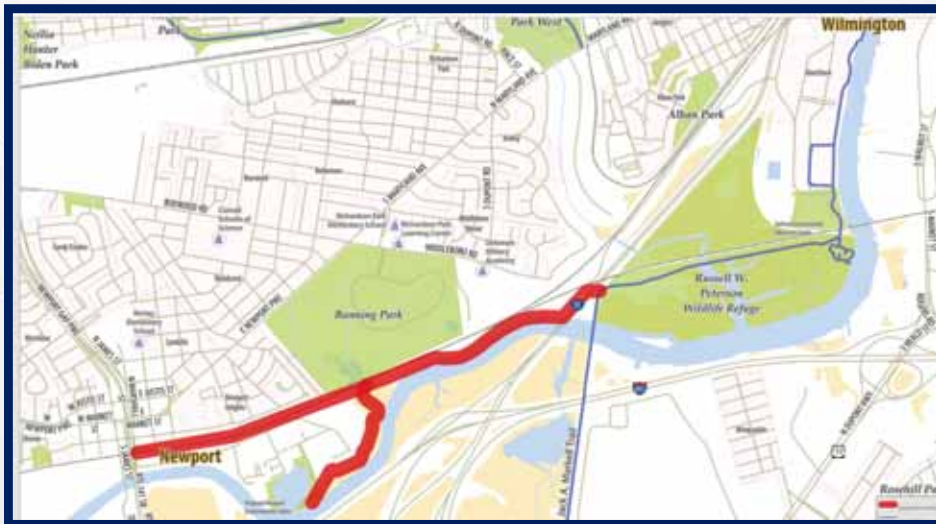
## Phase 2: “The Life Sciences Loop” – Connecting Residents with Thousands of Jobs



# The Wilmington Loop Delaware Greenways



## Phase 3: The Newport-Wilmington Trail



# The Vision



## Why Do This?

---

- Significant infrastructure investment and benefit to historically isolated/underserved East Side
- Transformational connector for state's largest city – improving access to cultural, educational and business resources
- Massive/measurable economic and public health benefits
- Game changer for Delaware QoL marketing
- ALREADY has broad support from diverse business, nonprofit and political leadership

## Building Community

- Connecting Brandywine and Christina trails
  - Safe, easy access to Northern De Greenways, Jack Markell Trail
- Connecting underserved urban communities with access to healthy amenities and parks
- Connecting city employees with suburban jobs in:
  - Life Sciences
  - Banking
  - Health care
  - Corporate services
  - Hospitality
  - Vice versa
- Connecting people of all backgrounds, neighborhoods
- Connecting Wilmington, Newport and New Castle

## Strengthening the economy

- Arts
- Food
- Culture
- Commerce
- History

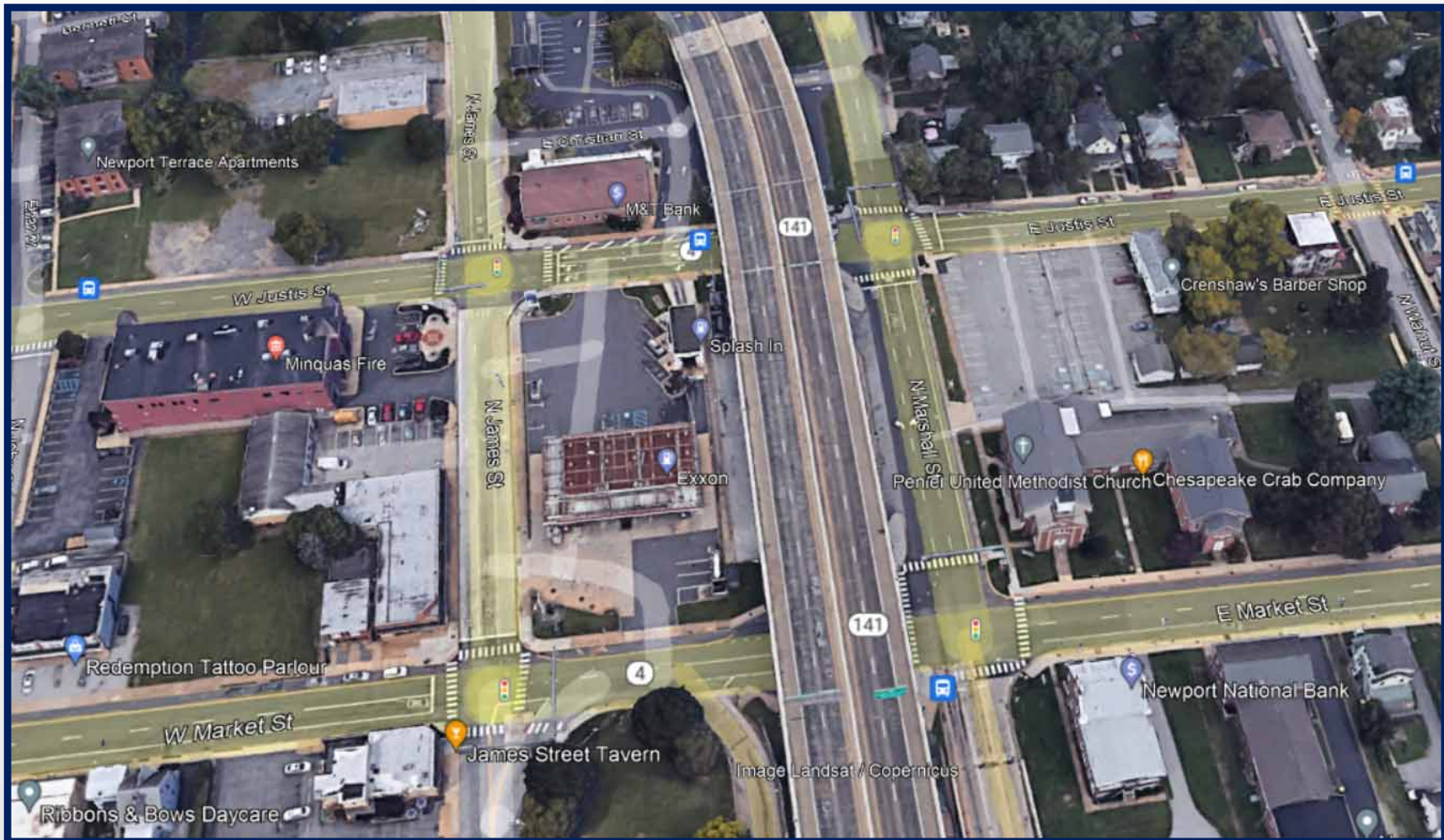
*An immensely positive initiative – and selling point – for the livability and vitality of Greater Wilmington*

**More information can be found at:**

**[Delawaregreenways.org/wilmington-loop/](http://Delawaregreenways.org/wilmington-loop/)**

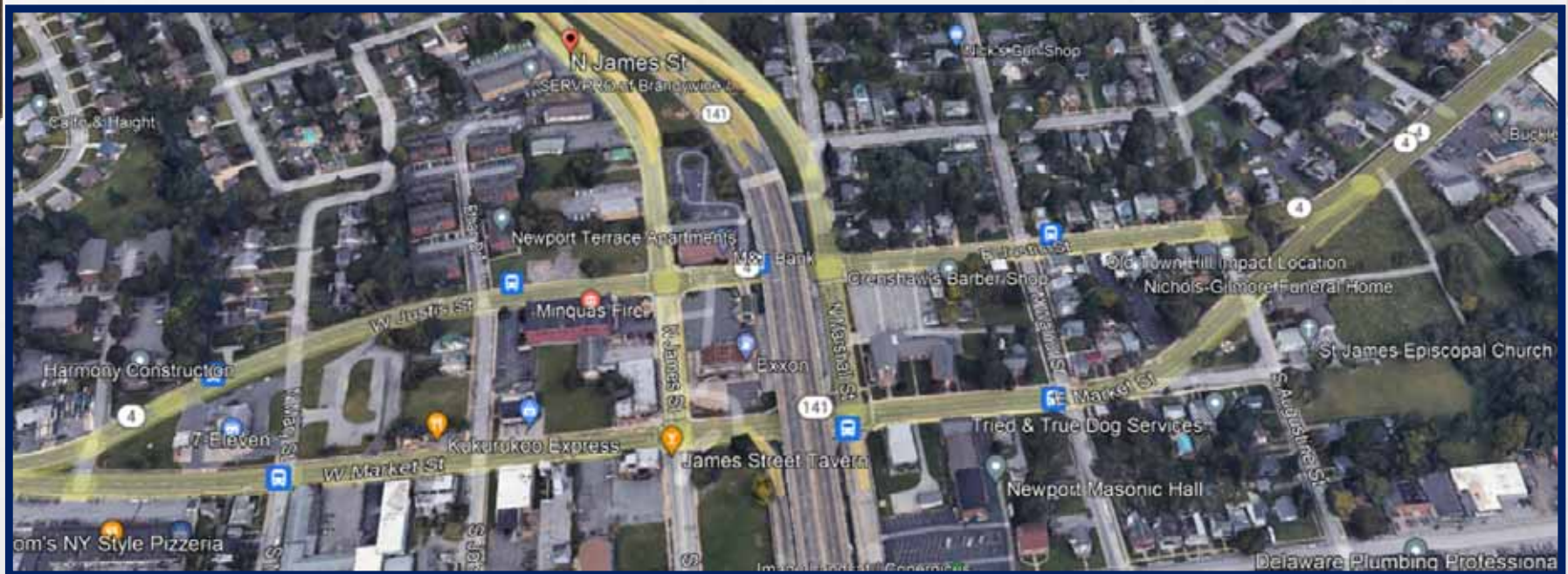
# Community Feedback/Discussion

- Don't Block The Box



## Community Feedback/Discussion

- Route 4 Traffic Congestion



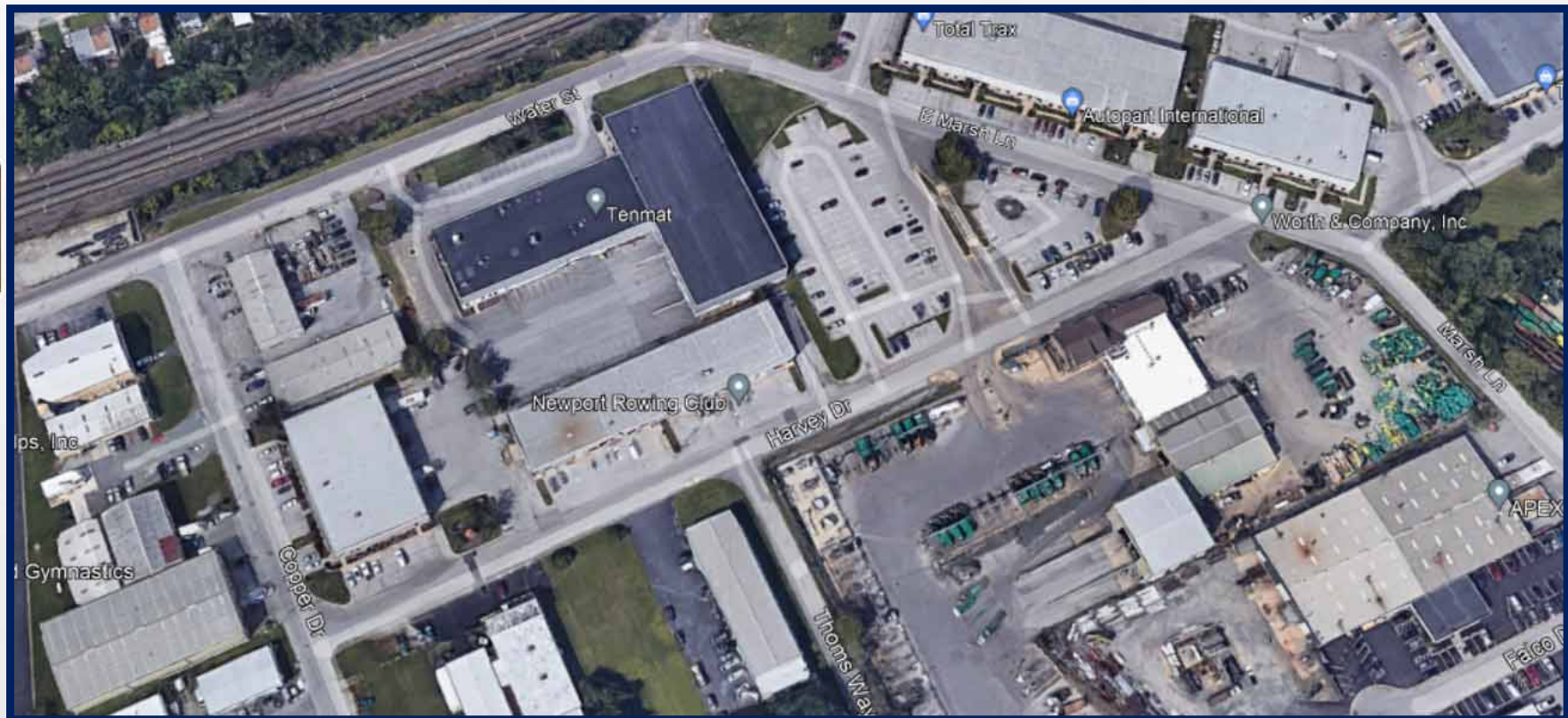
## Community Feedback/Discussion

- Ayre Street between James St and Walnut St
- Disrepair



## Community Feedback/Discussion

- Striping Water Street and Marsh Lane





## Community Feedback/Discussion

- New Discussions
-



## Community Ranking of Concerns

- Pedestrians
- Bicycles
- Transit
- Trucks
- Speeding
- Congestion

## Next Steps

- 3 additional monitoring committee meetings this year
- Annual Corridor Monitoring Report
  - Land development activity
  - Traffic growth
  - Transit
  - Safety
  - Master Plan project status/prioritization
  - Major projects outside of study area
  - Follow up tasks
- Project Prioritization
  - Funding opportunities
  - Pave/rehab, capital, Transportation Alternatives Program (TAP), Community Transportation Funds (CTF), grants, Bicycle and Pedestrian Improvements Program (PAR)

# THANK YOU

