

Welcome

# Newport Transportation Study – Monitoring Committee

February 7, 2022

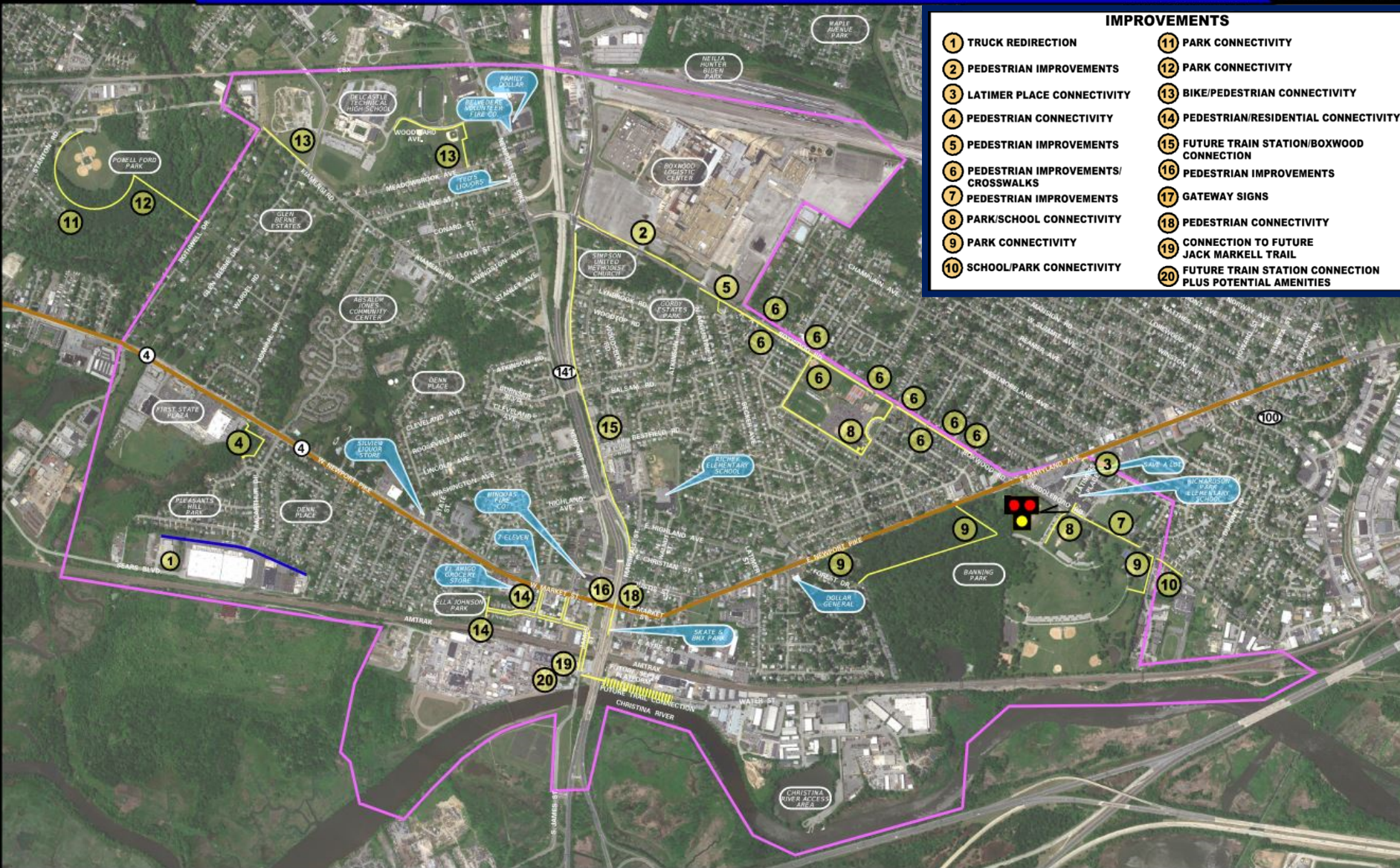
## Agenda

- Introductions
- Newport Transportation Study Summary
- PEL Report
- Next Steps

## Goals

1. Improve Newport's multi-modal capacity. Newport is striving to become a more walkable, bikeable town.
2. Assess re-opening the Newport Train Station to commuter rail service.





## IMPROVEMENTS

- |                                      |   |
|--------------------------------------|---|
| 1 TRUCK REDIRECTION                  | 11 PARK CONNECTIVITY  |
| 2 PEDESTRIAN IMPROVEMENTS            | 12 PARK CONNECTIVITY  |
| 3 LATIMER PLACE CONNECTIVITY         | 13 BIKE/PEDESTRIAN CONNECTIVITY                             |
| 4 PEDESTRIAN CONNECTIVITY            | 14 PEDESTRIAN/RESIDENTIAL CONNECTIVITY                      |
| 5 PEDESTRIAN IMPROVEMENTS            | 15 FUTURE TRAIN STATION/BOXWOOD CONNECTION                  |
| 6 PEDESTRIAN IMPROVEMENTS/CROSSWALKS | 16 PEDESTRIAN IMPROVEMENTS                                  |
| 7 PEDESTRIAN IMPROVEMENTS            | 17 GATEWAY SIGNS  |
| 8 PARK/SCHOOL CONNECTIVITY           | 18 PEDESTRIAN CONNECTIVITY                                  |
| 9 PARK CONNECTIVITY                  | 19 CONNECTION TO FUTURE JACK MARKELL TRAIL                  |
| 10 SCHOOL/PARK CONNECTIVITY          | 20 FUTURE TRAIN STATION CONNECTION PLUS POTENTIAL AMENITIES |



# PEL Report

- Existing conditions
- Purpose and Need
- PEL checklist for NEPA documentation
- Agency coordination
- Potential permits
- Alternatives analysis
- Community coordination summary
- Cost estimates

# Monitoring Committee

Newport Advisory Committee	
Elected Officials: Name	District
Spiros Mantzavinos	Senate District 7
John Walsh	Senate District 9
John L Mitchell	House District 13
Kimberly Williams	House District 19
Michelle Mac Donald	Mayor of Newport
Name	Company
Richard Piendak	Advanced Pavement Group
Dave Tiberi	Emergency Response Protocol
	Sun Chemical
Patrick Oakes	APEX
J. Stevens	APEX
Louis Dagostino	BASF
Greg Buckley	Buckley's Auto Care
William Keller	Air Liquide
Sarang Gadre	Air Liquide
Vince Ruff	Community
Wendy King	Newport Town Manager
	DeIDOT
Cooper Bowers	DeIDOT
Peter Haag	DeIDOT
John Sisson	DTC
	DNREC
Tricia Arndt	DE Office of State Planning
Thomas Harvey	Harvey Hannah
Bill Lower	Harvey Hannah
	New Castle County Land Use
Matt Rogers	New Castle County Land Use
Bob Chadwick	New Castle County Chamber of Commerce

## Monitoring Committee

- Land development activity
- Traffic growth
- Transit
- Pedestrian movements
- Safety
- Master plan project status and prioritization
- Major project outside of study area
- Tasks for next year and follow ups



# THANK YOU



## Plan Summary

### Newport Transportation Study Estimated Costs

Number	Improvement	Length	Width	Other	Low / Moderate / High	Cost
14	Share use Connection adjacent to Ella John Park	300	10			\$150,000
14	Sidewalk/curb improvements on downtown roads	3100	10			\$2,480,000
16	Intersection improvements by SR 141	300	10			\$390,000
18	Pedestrian connection under SR 141	500	10			\$400,000
19	Connection to Newport River Trail	300	10			\$240,000
20	Train station connection	500	10			\$400,000
	Gateway/Wayfinding Signs		assume 30 signs plus a study			\$40,000



# Plan Summary

## Newport Transportation Study Estimated Costs

Number	Improvement	Length	Width	Other	Low / Moderate / High	Cost
First State Plaza						
1	Truck Redirection behind industrial area	2000'	22			\$500,000
4	Connection into First State Plaza	1000	10			\$500,000





## Plan Summary

### Newport Transportation Study Estimated Costs

Number	Improvement	Length	Width	Other	Low / Moderate / High	Cost
Crossing Maryland Avenue						
3	Sidewalk connection	20	10			\$16,000



## Plan Summary

### Newport Transportation Study Estimated Costs

Number	Improvement	Length	Width	Other	Low / Moderate / High	Cost
Along Boxwood Road						
2	Shared use path adjacent to Boxwood Logistic Center	1800	10			\$900,000
5	Shared use path from Boxwood Logistic Center to just short of Maryland Avenue	4000	10			\$2,000,000
6	Crosswalk striping along #5			11 crossings		\$82,500
8	Shared use path around Conrad	3000	10	plus bike parking pad		\$1,500,000

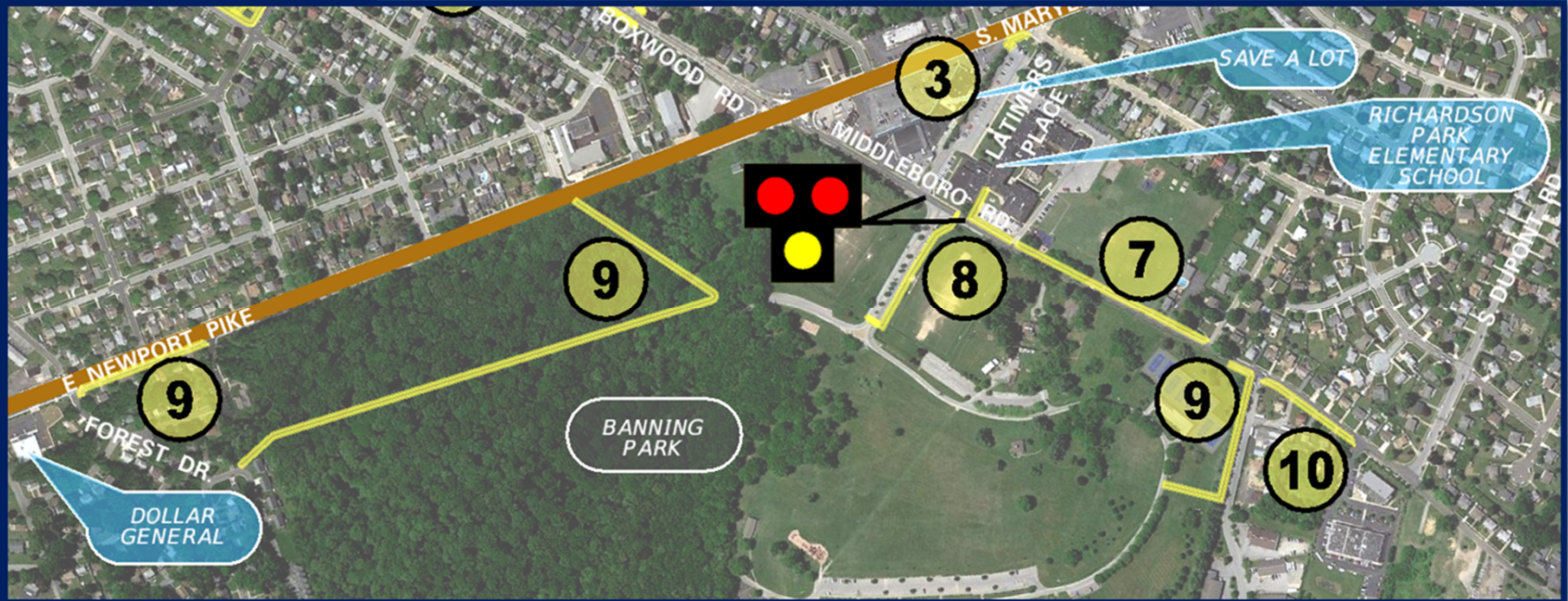




## Plan Summary

### Newport Transportation Study Estimated Costs

Number	Improvement	Length	Width	Other	Low / Moderate / High	Cost
Middleboro Road/Banning Park Improvements						
7	Sidewalk/Shared Use Path adjacent to Richardson Park Elementary School	1200	5-10			\$600,000
8	Rapid Flash Beacon					
	Shared use path into Banning Park	550	10			\$275,000
9 East	Additional Path into Park	650	10			\$325,000
9 West	Shared Use Path into Banning Park	2300	10			\$1,150,000
10	Shared use path to Delaware Military Academy	425	10			\$212,500

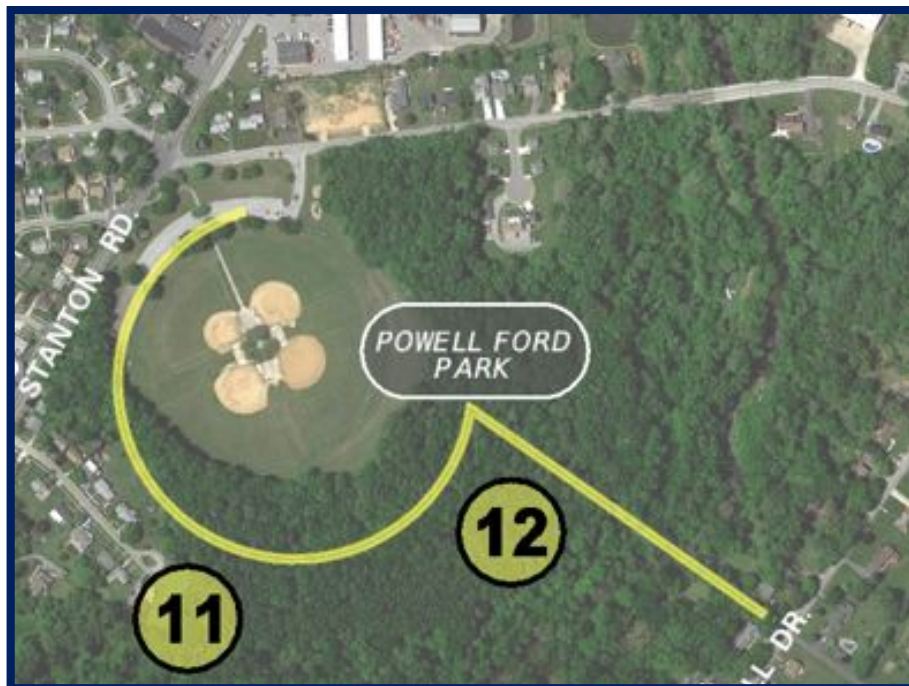




## Plan Summary

### Newport Transportation Study Estimated Costs

Number	Improvement	Length	Width	Other	Low / Moderate / High	Cost
Powell Ford Park Improvements						
11	Shared use path connection to entrance	5280	10			\$2,640,000
12	shared use path to Rothwell Drive	1000	10			\$500,000



## Plan Summary

### Newport Transportation Study Estimated Costs

Number	Improvement	Length	Width	Other	Low / Moderate / High	Cost
Pedestrian Connectivity						
15	Shared use path along Marshall Street	5280	10			\$2,640,000
13	Kiamensi Road shared use path	800	10			\$400,000
13	Shared use path connection from Meadowbrook Avenue to Delcastle High School	1500	10			\$750,000

