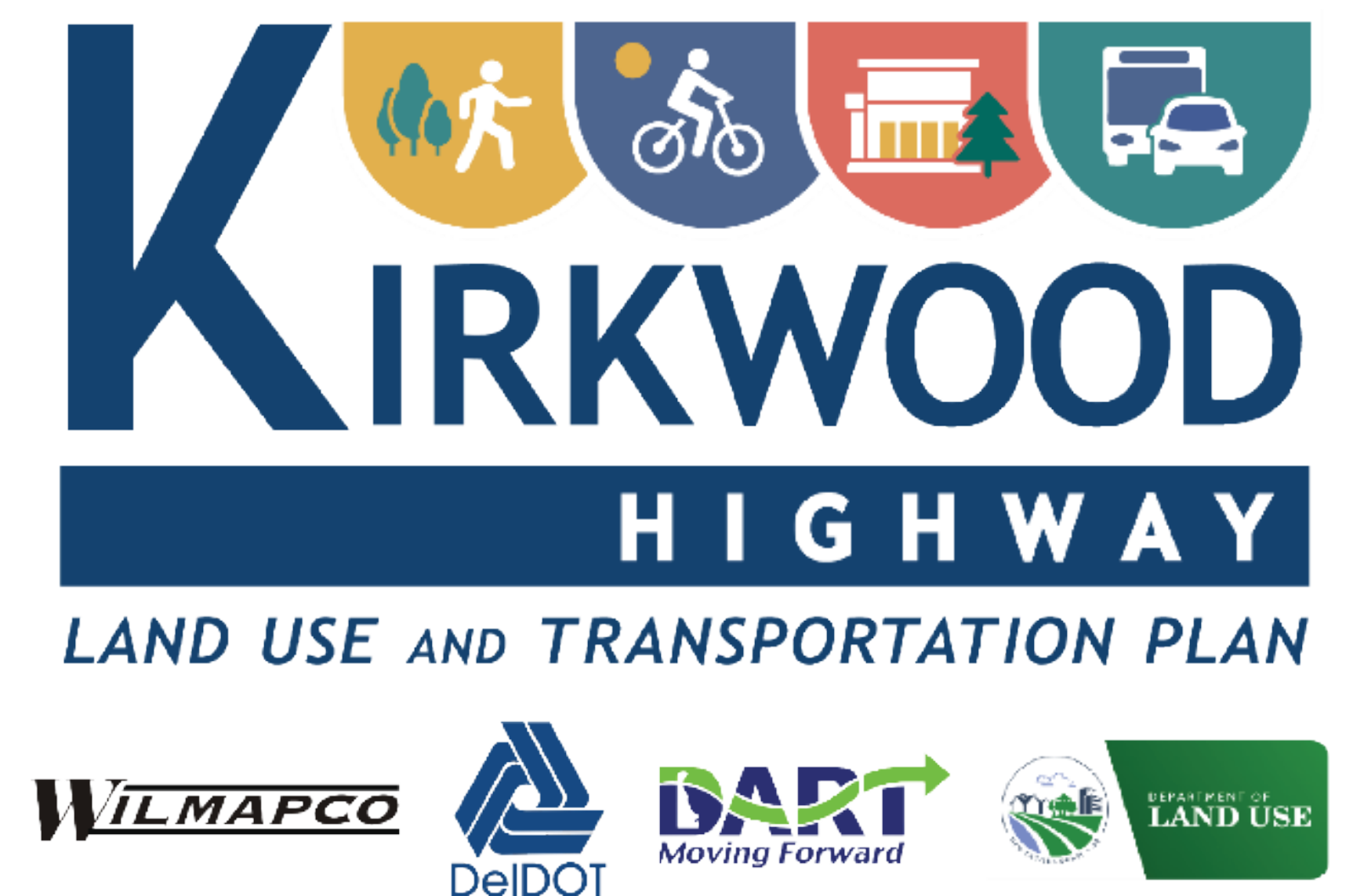


VISIONING

Many communities consider formal vision statements as part of corridor planning to highlight elements of particular importance.



New Castle, DE

The Route 9 Master Plan puts forth dozens of recommendations that will spur economic development, **correct unhealthy land use patterns**, mitigate community health concerns, improve the multimodal transportation network, **reduce illegal truck traffic while streamlining freight transportation**, and, generally, spur mixed-use and mixed income reinvestment and redevelopment opportunities.



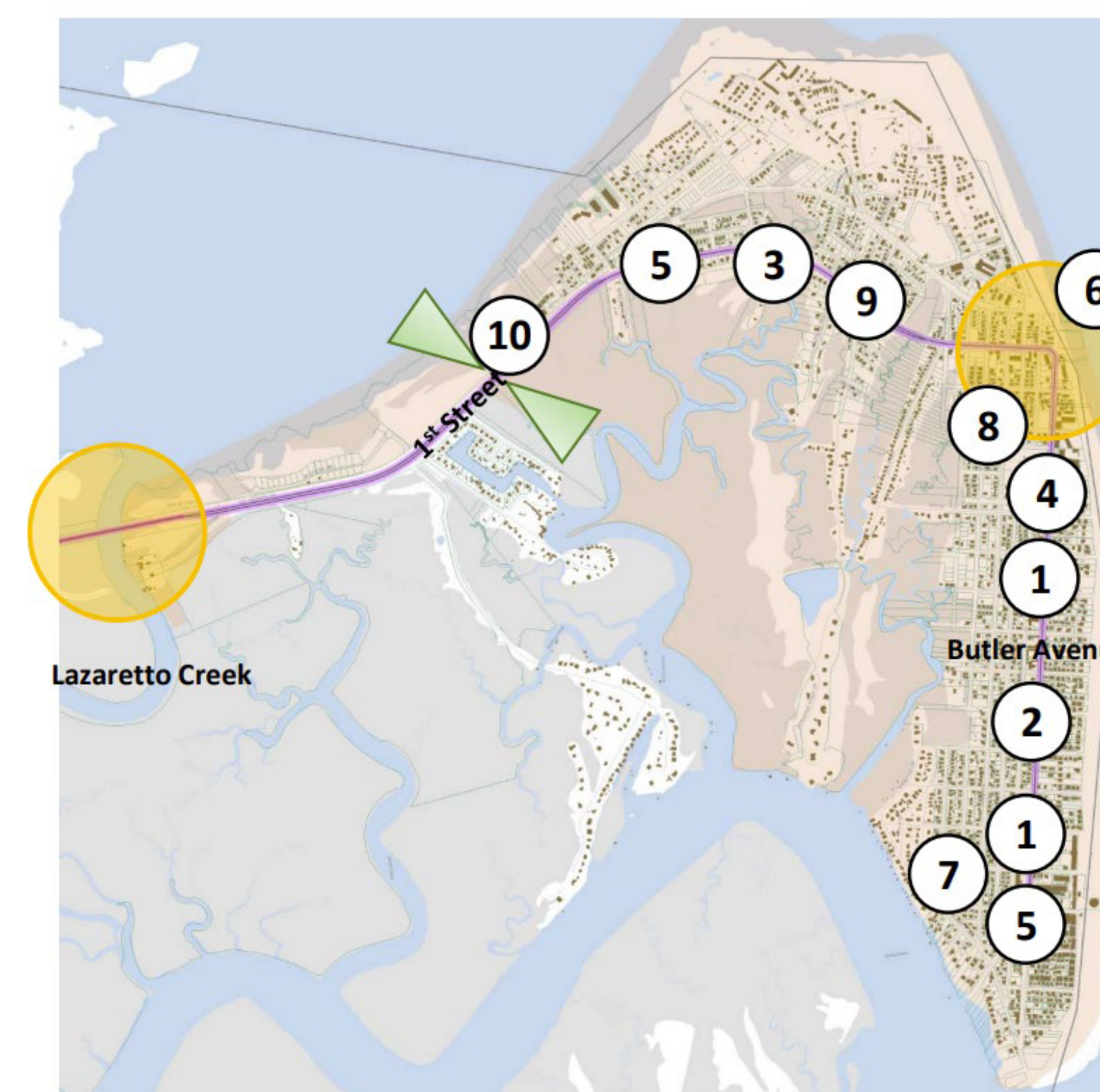
Boulder, CO

The 30th Street and Colorado Avenue corridors provide safe, enjoyable, and direct travel for people of all ages and abilities, using all modes of transportation in all **weather conditions**. As **Complete Streets**, these vibrant corridors efficiently connect people to neighborhoods, jobs, shopping, parks, schools, the **University of Colorado**, and the surrounding natural environment.



Dublin, OH

The Bridge Street Corridor is Dublin's centerpiece. Dublin's **historical and cultural heart** is strengthened and balanced by highly walkable districts and neighborhoods on both sides of the Scioto River. Exceptional green spaces preserve the **outstanding natural features** in the corridor and **seamlessly connect each unique district** along the corridor.



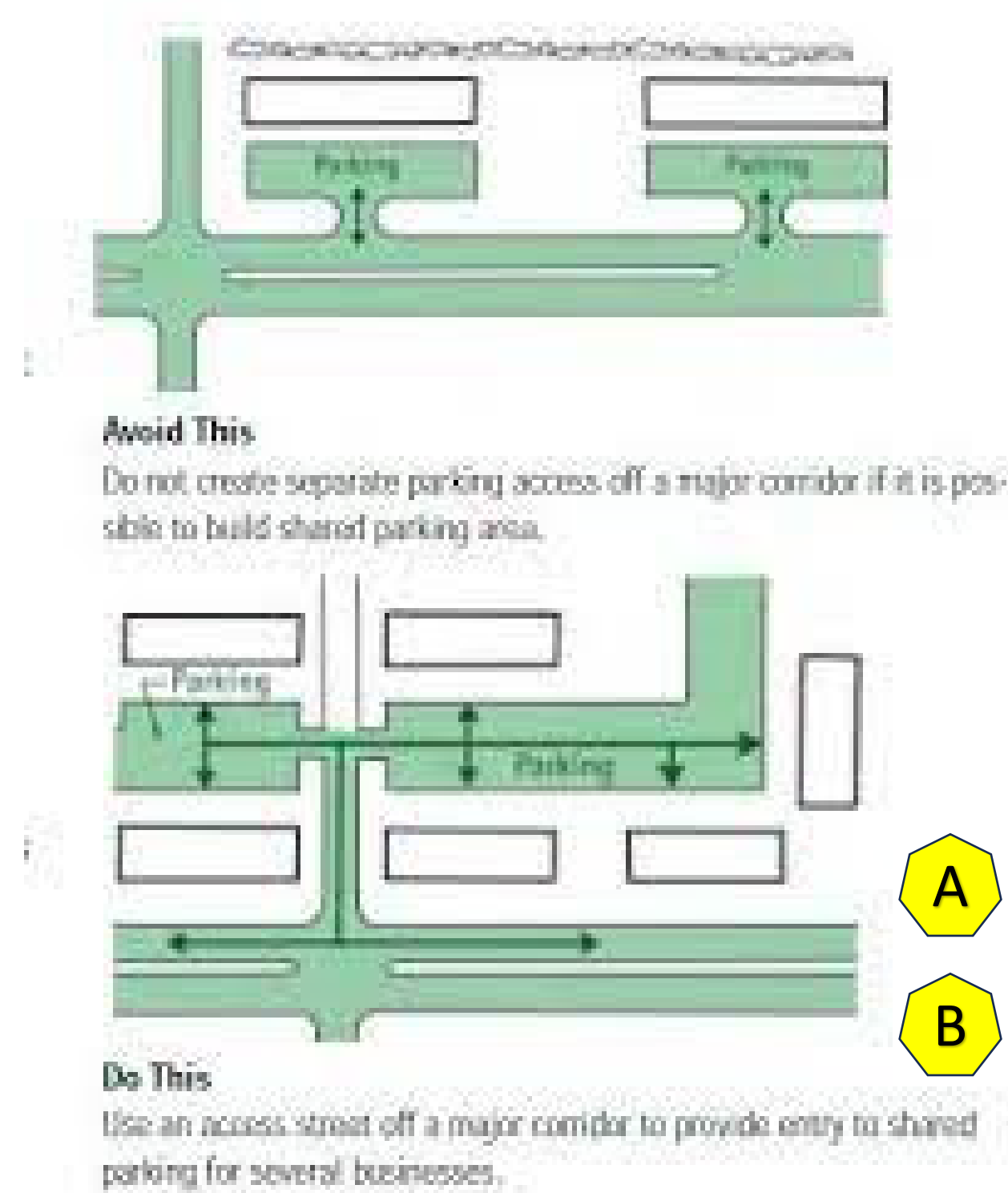
Savannah, GA

The Victory Drive corridor study aims to preserve, revitalize, and maintain its historic, **commemorative** landscape and prominence as a **signature boulevard**. Through a public-private collaboration, this study seeks to develop an implementable plan incorporating **context sensitive solutions** to **balance the transportation and land use demands** of a **contemporary** street.

What words or phrases best describe your vision for the Kirkwood Highway corridor?

LAND USE & POLICY OPPORTUNITIES

Please use the stickers provided to indicate on the tables below what types of land use and policies you would like to see incorporated into the future of Kirkwood Highway.



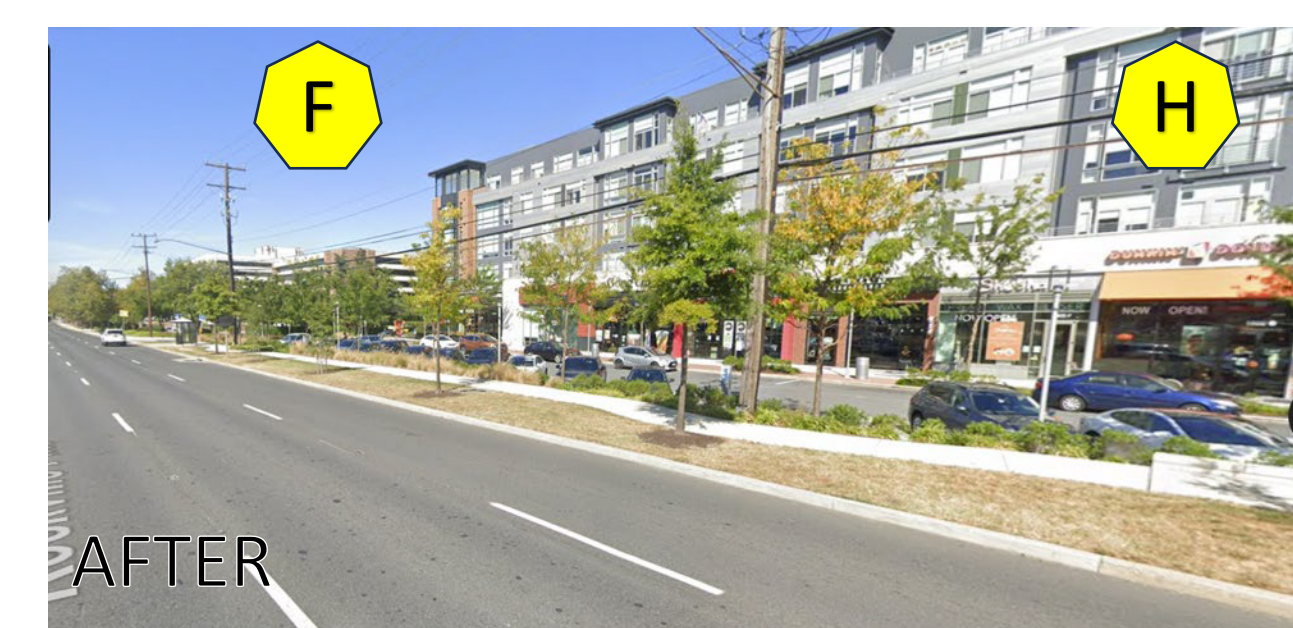
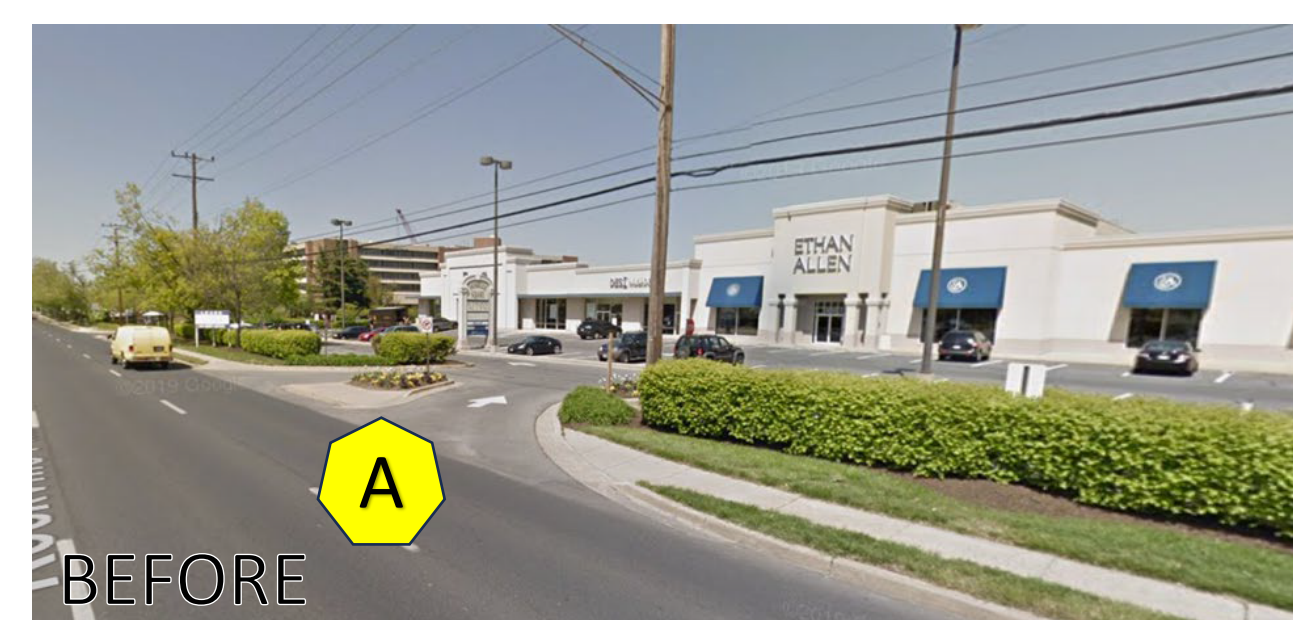
TRANSPORTATION POLICY OPTIONS

Strategy	Objective	Effects	Does Kirkwood Highway Need More Of This?
Access management / consolidation A	Minimize the number and length of curb cuts	Improves safety for all modes, reduces ease of access for drivers making convenience retail stops.	
Shared parking B	Reduce extent of unused parking spaces	Facilitates small business expansion, contributes to a "park once" environment	
Transportation Demand Management (TDM) C	Provide access for all users and increase awareness of options	Focuses coordination of transit, ridesharing, and Transportation Network Company options	
Enforcement D	Improve public safety	Can provide a deterrent effect for unsafe behavior	
Shared mobility E	Facilitate healthy options for shorter trips	Shared bikes or scooters can enhance accessibility; requires management	
Other Ideas You'd Like To See?			



← This graphic contrasts typical suburban development on the top half with more traditional neighborhood design on the bottom half.

North Bethesda, MD has incorporated key placemaking principles along Rockville Pike as it evolves. →



LAND USE AND PLACEMAKING OPTIONS

Strategy	Objective	Effects	Does Kirkwood Highway Need More Of This?
Building orientation F	Communicate modal priorities	Surface parking in front prioritizes auto access; parking to side/rear facilitates pedestrian access	
Street connectivity G	Reduce trip lengths, disperse traffic flows	More connectivity encourages walk/bike trips and facilitates access management	
Mixed-use H	Reduce trip lengths, provide workforce housing in 24/7 centers	Activate 24/7 communities, "eyes on the street"	
Other Ideas You'd Like To See?			

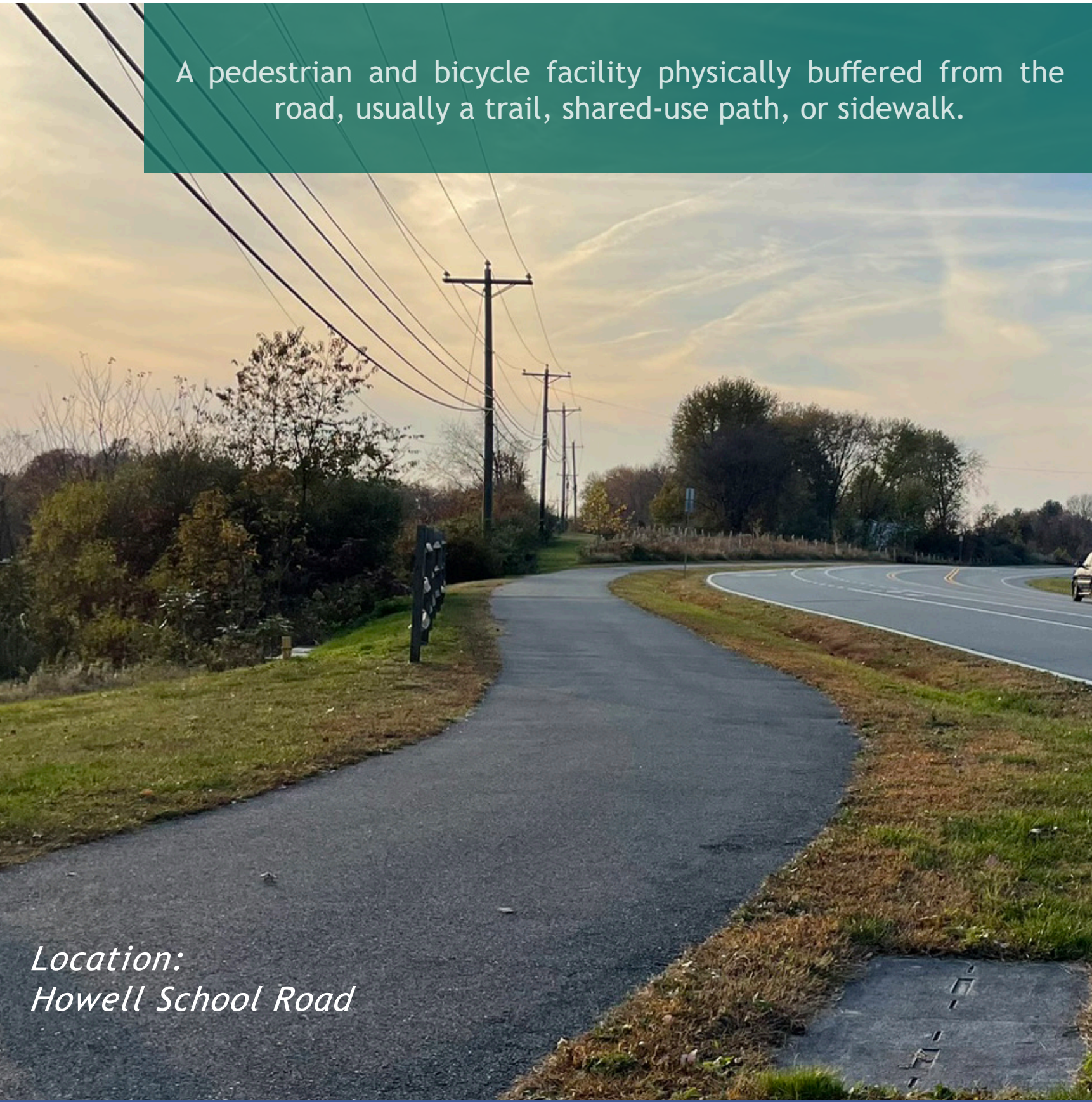
TRANSPORTATION OPPORTUNITIES

Please use the stickers provided to indicate which transportation facilities and treatments you would like to see incorporated into the future vision of Kirkwood Highway



**KIRKWOOD
HIGHWAY**

LAND USE AND TRANSPORTATION PLAN



Off-Road Bike/Ped Facility

PLACE STICKER HERE



On-Road Bike Facility

PLACE STICKER HERE



Enhanced or Raised Crosswalks

PLACE STICKER HERE



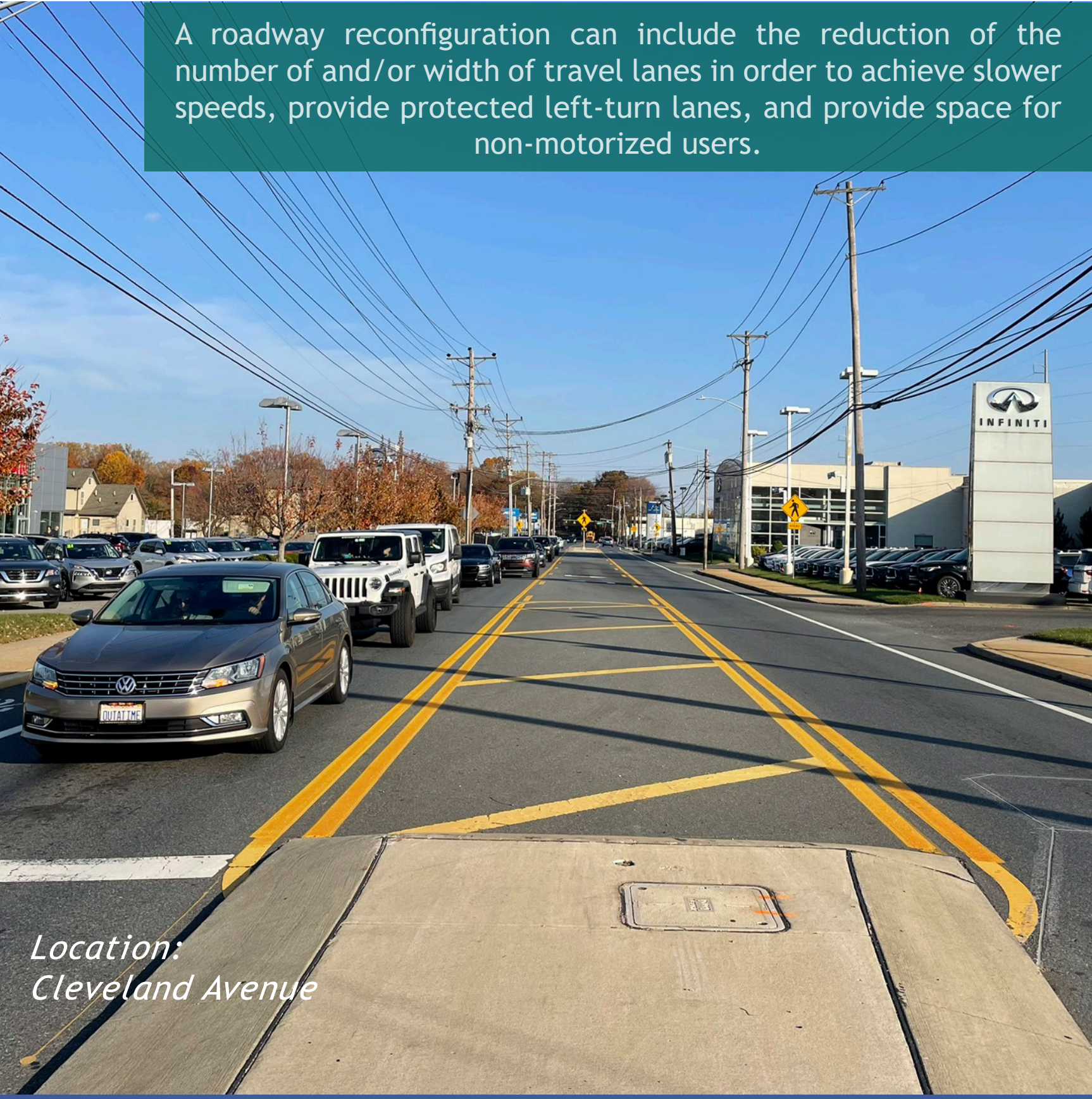
Rectangular Rapid Flashing Beacon

PLACE STICKER HERE



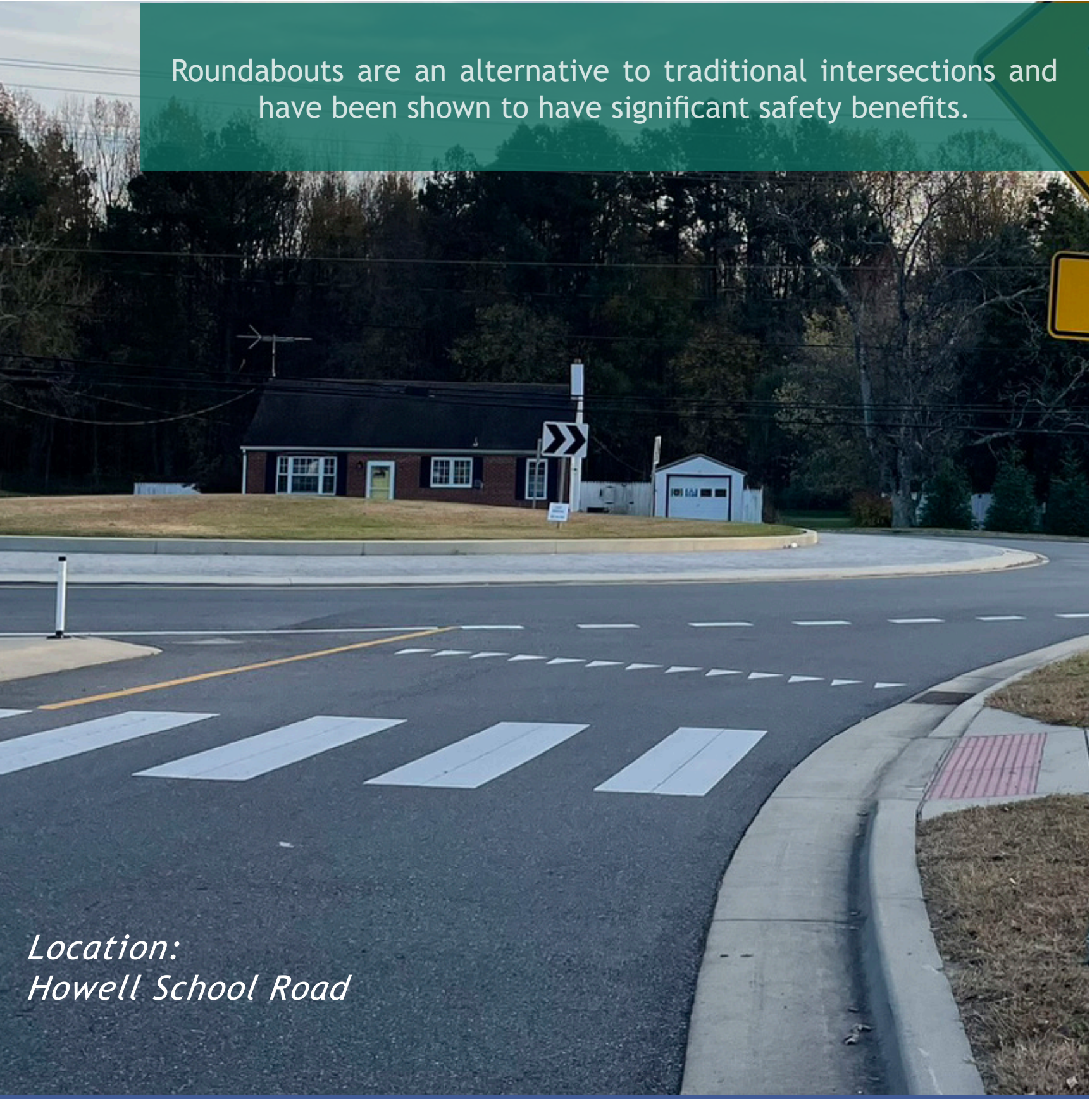
Multiway Boulevard

PLACE STICKER HERE



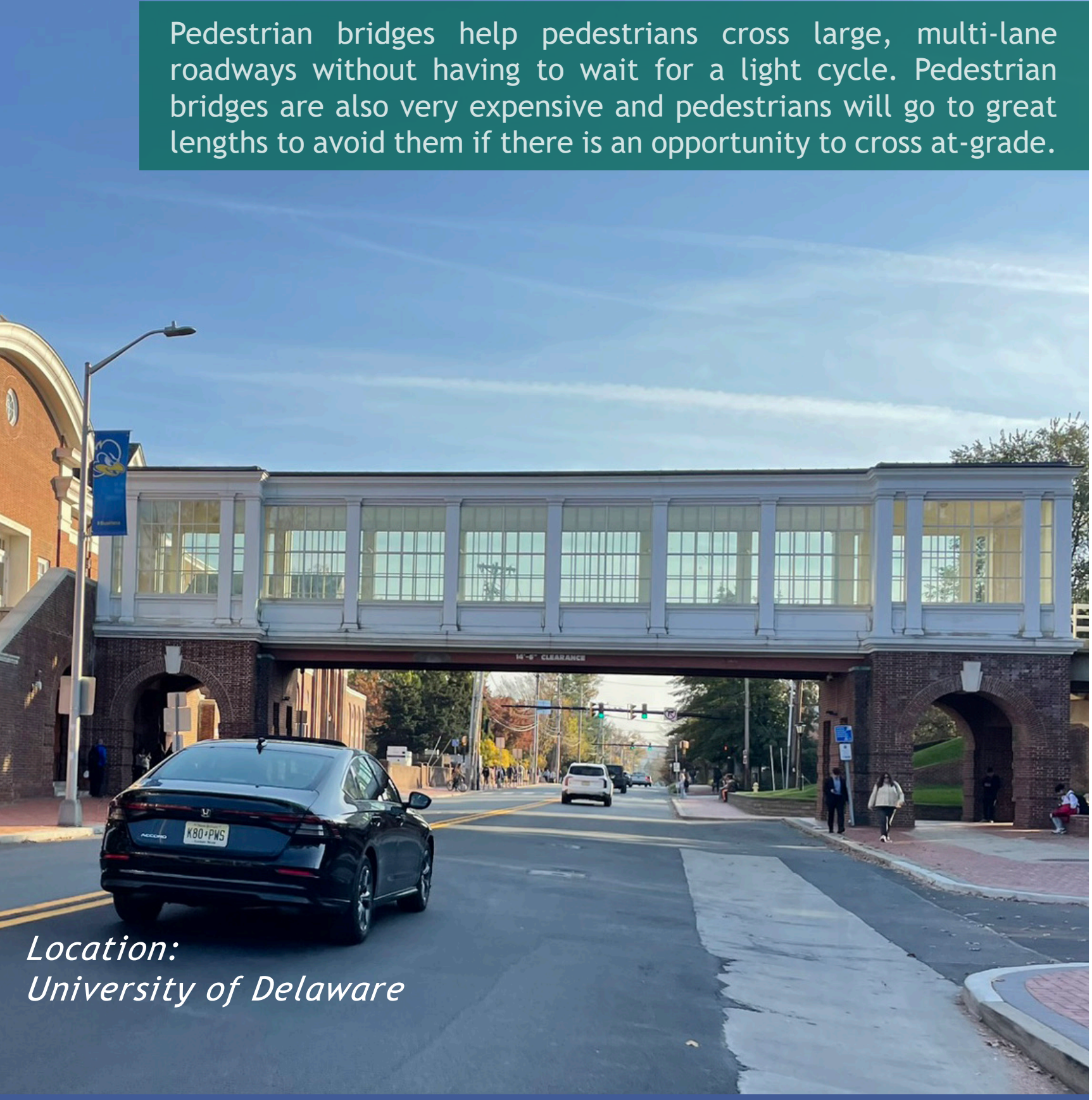
Roadway Reconfiguration

PLACE STICKER HERE



Roundabout

PLACE STICKER HERE

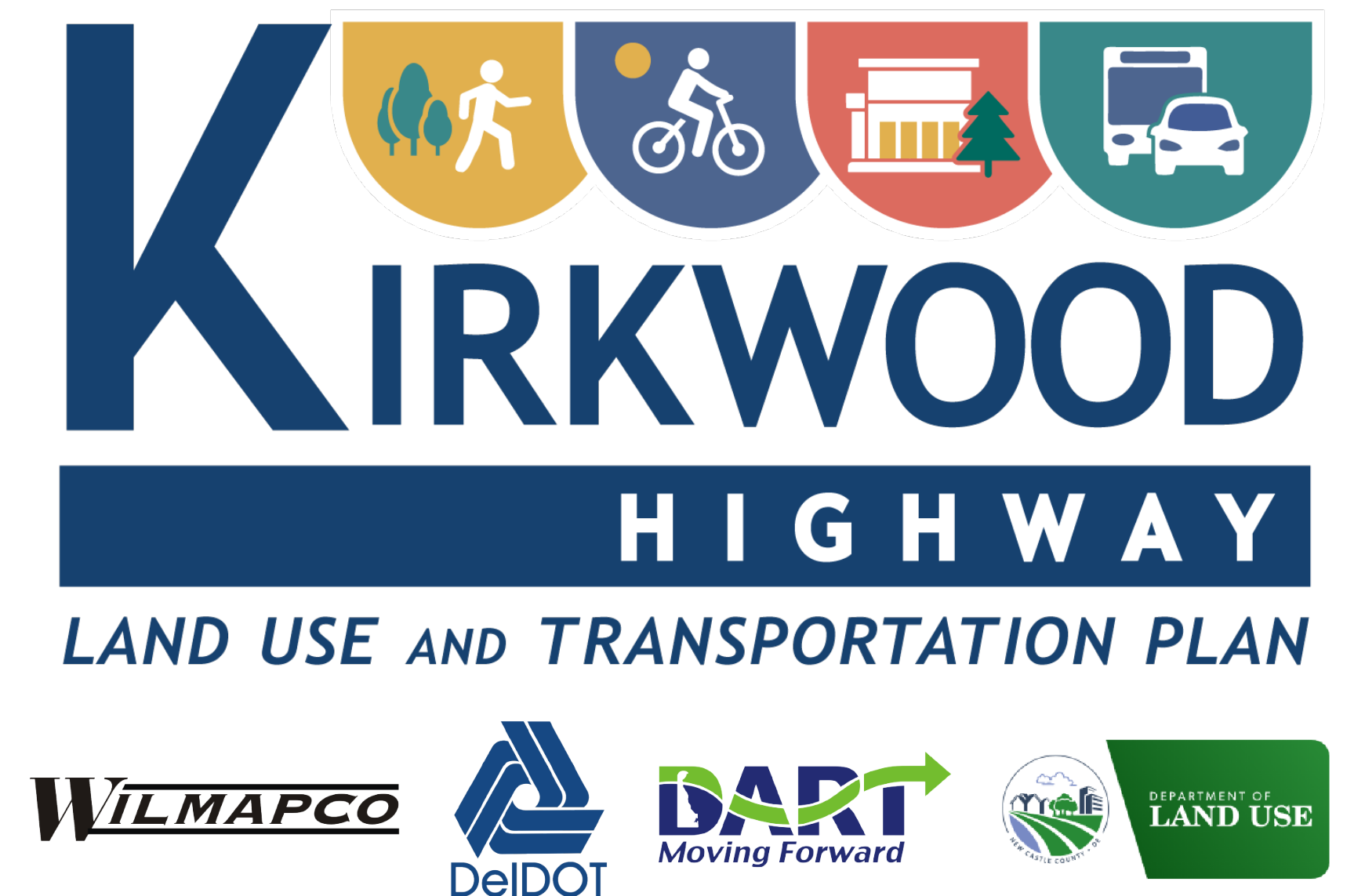


Pedestrian Bridge

PLACE STICKER HERE

TRANSPORTATION OPPORTUNITIES

Please use the stickers provided to indicate which transportation facilities and treatments you would like to see incorporated into the future vision of Kirkwood Highway.



Bus Rapid Transit (BRT) improvements such as adaptive signals, elevated platforms, and dedicated travel lanes can support a BRT or simply improved transit operations.

BRT/Bus Priority Treatments

PLACE STICKER HERE



Additional turning lanes can provide increased safety and comfort for motorists while improving traffic operations. Turning lanes can be deployed at major driveways or intersections.

Additional Turn Lanes

PLACE STICKER HERE



Innovative intersections use non-traditional designs to change the way vehicles, bicycles, or pedestrians move through an intersection. Changing the design can remove conflict points to improve safety and improve operations.

Innovative Grade-Separated Intersections

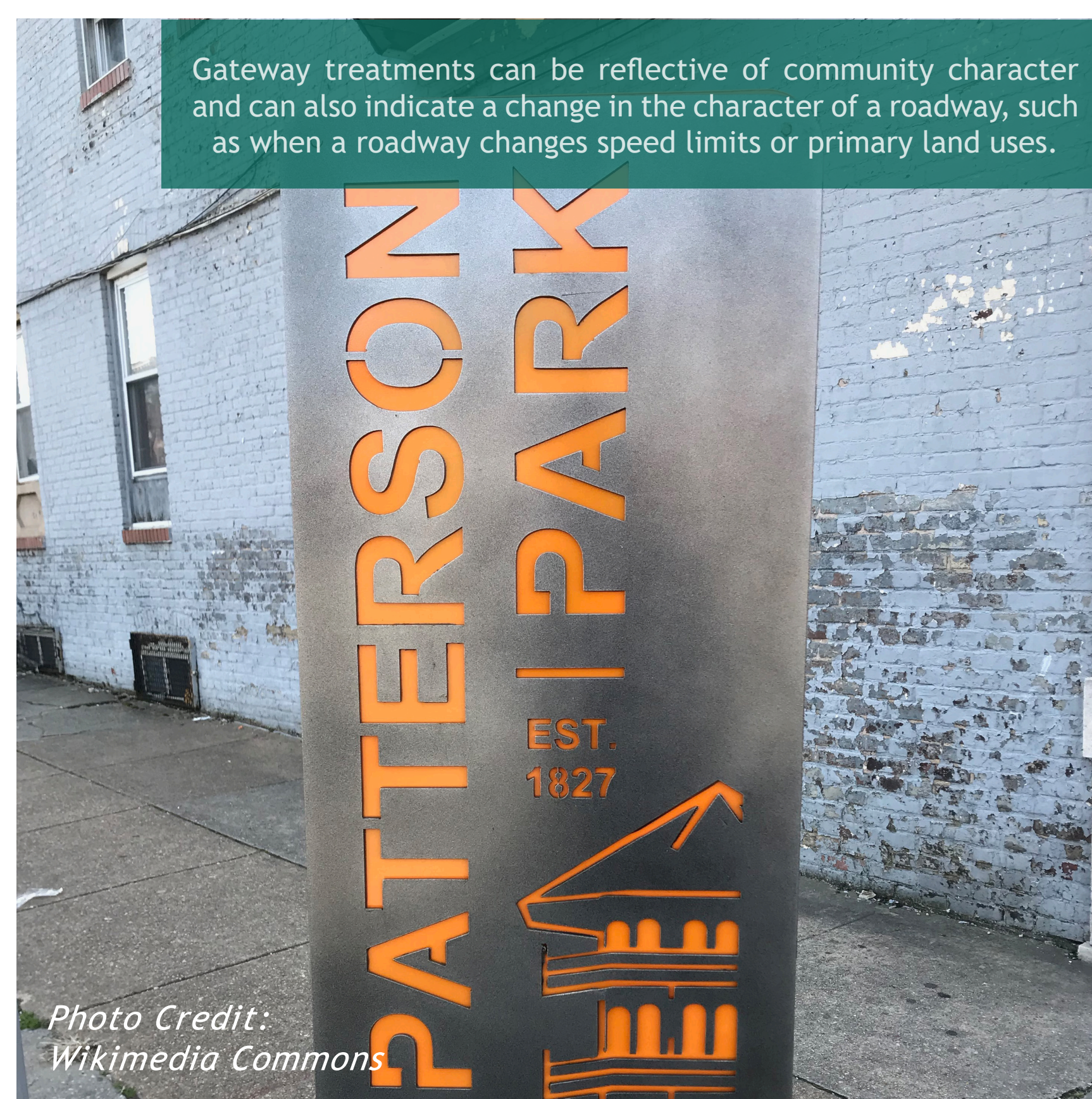
PLACE STICKER HERE



Speed management can sometimes be accomplished through roadway design decisions. Narrowing the travel lanes, adding chicanes, and adding roadside landscaped features can help reduce driver speeds.

Speed Management (Visual Narrowing, Horizontal Deflection)

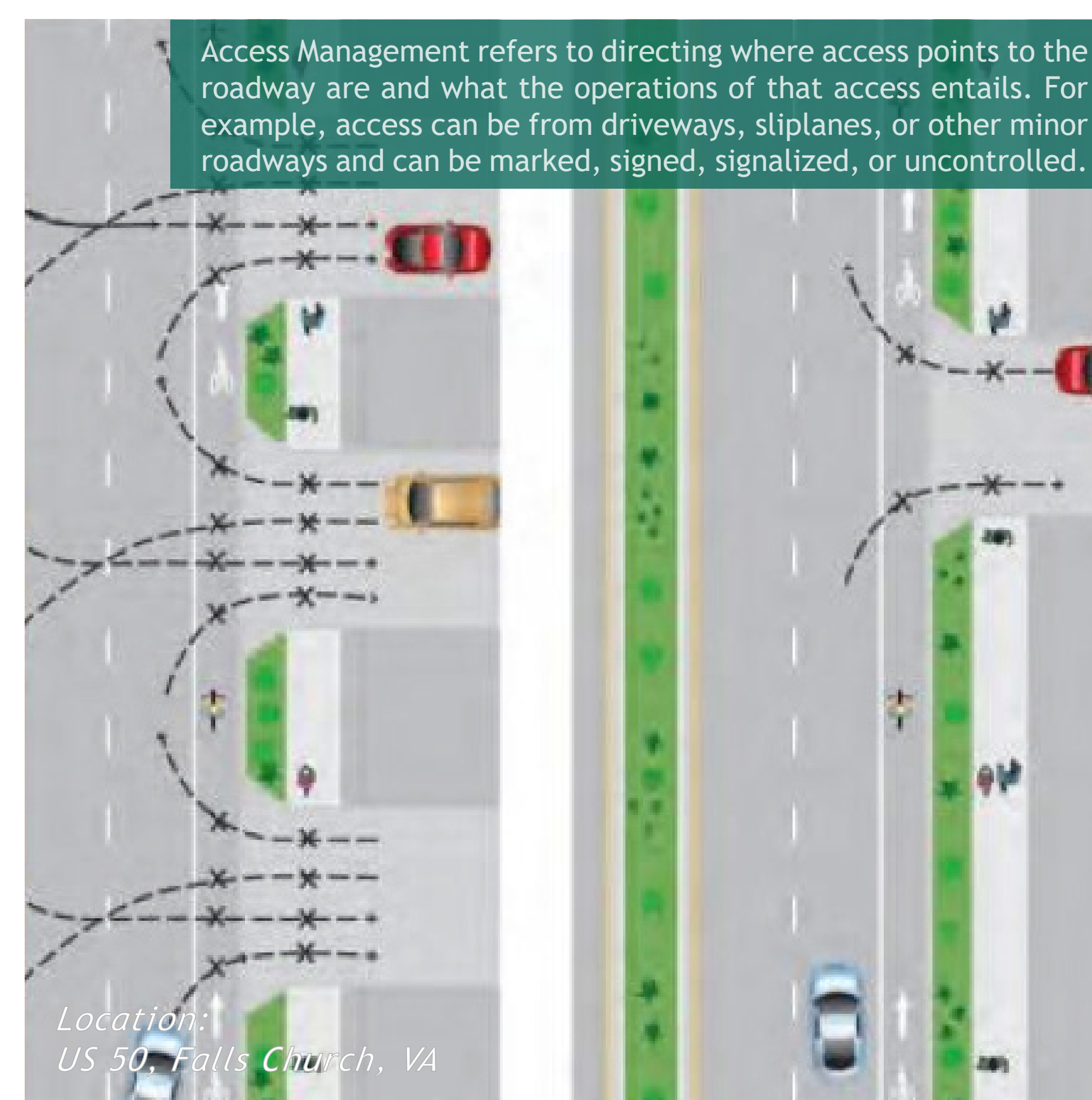
PLACE STICKER HERE



Gateway treatments can be reflective of community character and can also indicate a change in the character of a roadway, such as when a roadway changes speed limits or primary land uses.

Center / Gateway Treatments (Landscape, Lighting, Signage etc.)

PLACE STICKER HERE



Access Management refers to directing where access points to the roadway are and what the operations of that access entails. For example, access can be from driveways, slipways, or other minor roadways and can be marked, signed, signalized, or uncontrolled.

Access Management

PLACE STICKER HERE



Signal timing allocates how much "green" time is given to many competing movements at an intersection. Signal timing along a corridor can be used to help vehicles progress through a series of signals, reduce vehicle wait times, and encourage safe driving behaviors.

Signal Timing

PLACE STICKER HERE



Branded wayfinding allows for residents and visitors to navigate the area with ease while affecting branding and imparting a unique community character.

Branded Wayfinding

PLACE STICKER HERE