



2025 Mobility Opportunities Plan

PAC

August 2025



Rebrand

- DOT's 180 degree turn on equity
- Continue analyses, but do not violate requirements
- Opted against "starting from scratch"



Rebrand

Mobility Opportunities Plan:

*Overcoming Transportation Barriers & Increasing
Economic Opportunity in Mobility Challenged Communities*



Rebrand

- “Environmental Justice” Areas are now “Economic Opportunity” Areas
- “Mobility Challenged” Areas stay the same
- All analyses remain ***factual***, with recommendations based on ***local data***



Plan Document

Chapter 1: Background

Chapter 2: Meeting Title VI Requirements

Chapter 3: Economic Opportunity Communities

Chapter 4: Language Assistance Plan

Chapter 5: Transportation Analyses of Mobility Challenged Groups & Americans with Disabilities Act Self Evaluation

Chapter 6: Summary of Recommendations



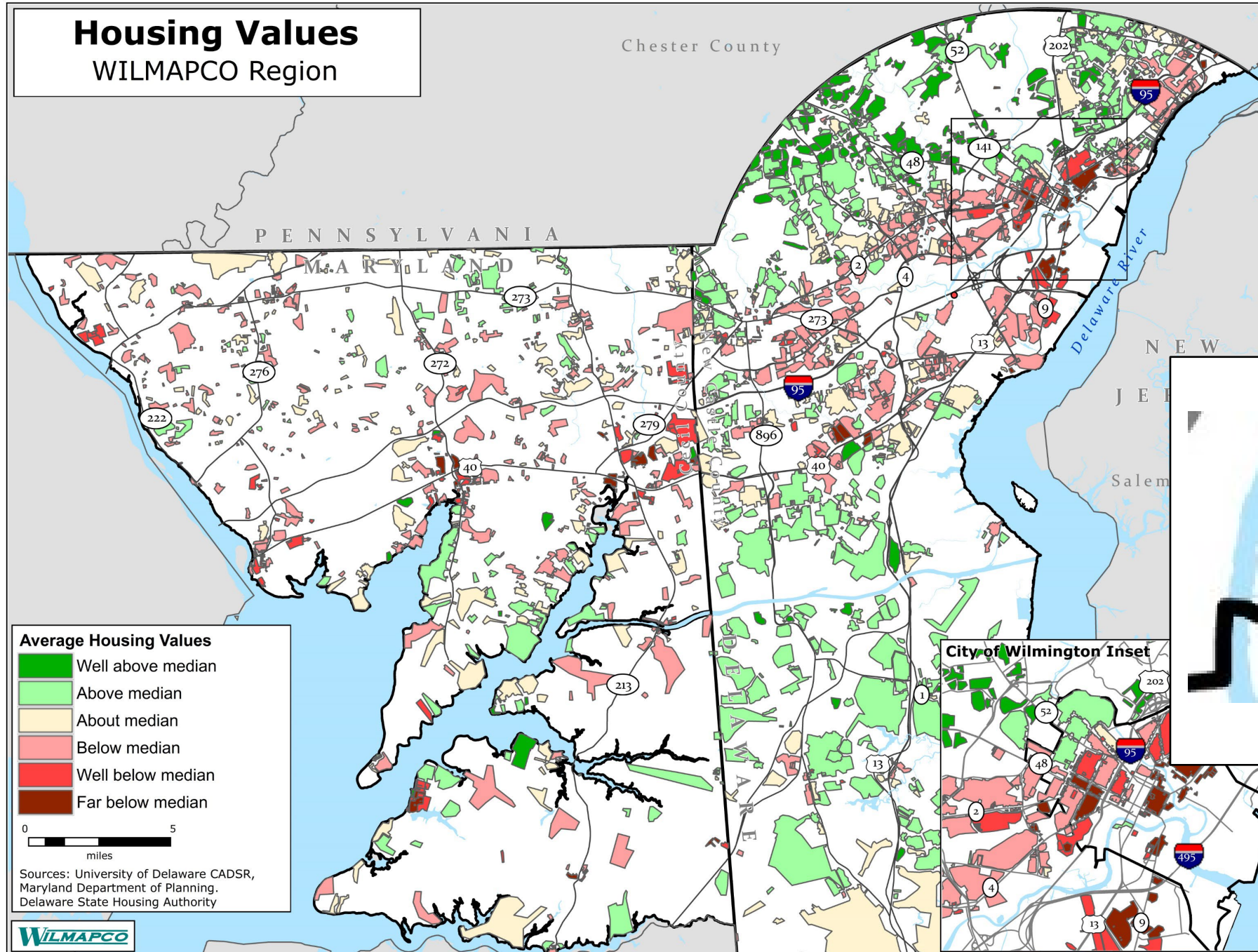
Strengthened Analyses

Changes from 2019's TJ Plan

- Deeper and more granular economic opportunity areas
- From 12 to 20 transportation analyses
- Improvements to connectivity analysis
- More detailed Limited English Proficiency analysis
- Addition of limited digital in Language Assistance Plan
- Addition of youth as a mobility challenged group

Housing Values

WILMAPCO Region

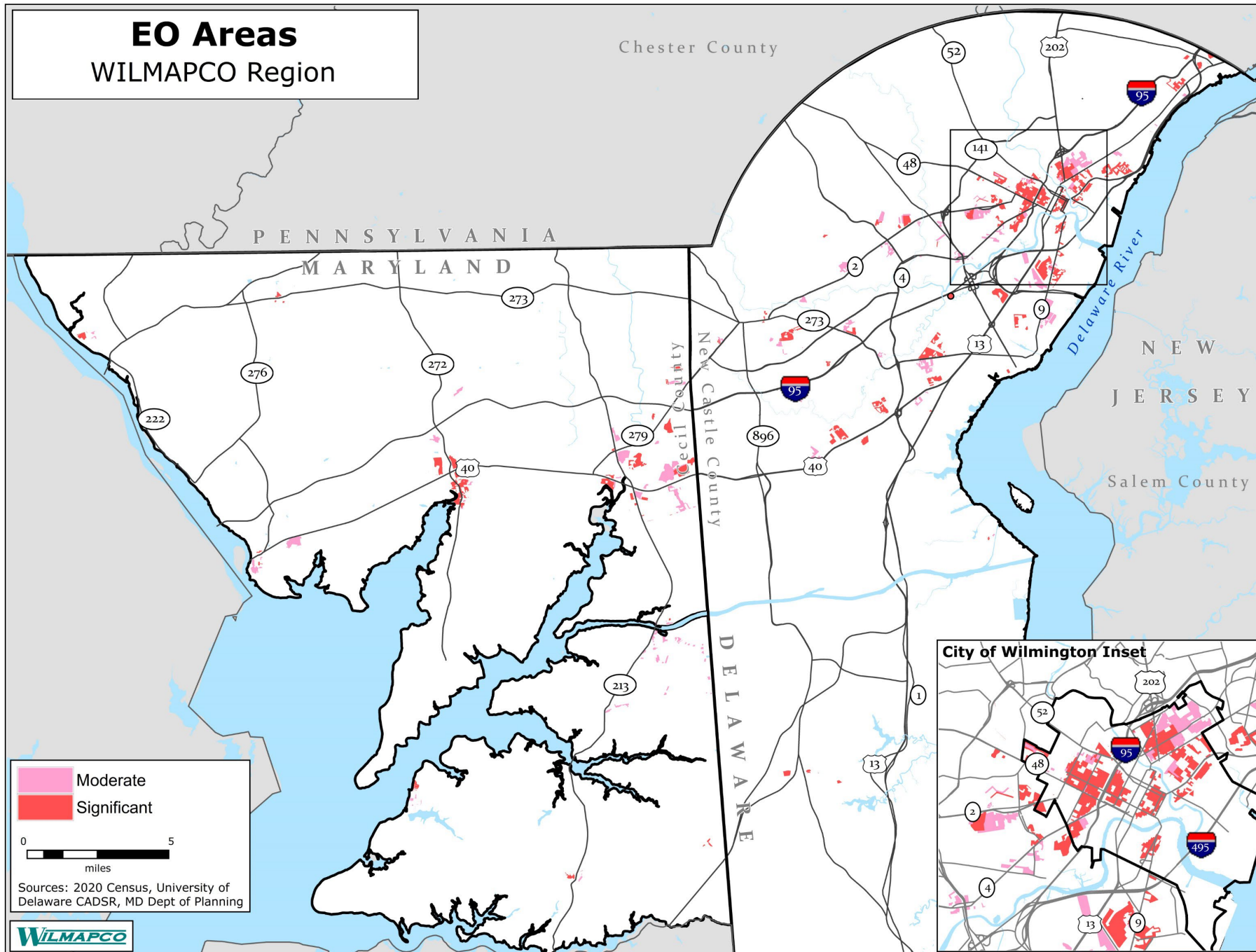


- Unique CADSR Analysis
- < Census Block Group

South Wilmington



EO Areas WILMAPCO Region



- Census: Poverty and racial/ethnic minorities
- Low housing values

Trims

- High housing values
- College students
- Non-residential
- Tiny populations



Community Mobility Analyses



Transportation Access to Healthy& Affordable Groceries



Transportation Access to Job or Desired Job



Transportation Access to Social Activities



Transportation Access to Routine Medical Care



Transportation + Housing Costs, Neighborhood Concentrations



Transportation Costs, Neighborhood Concentrations



Housing Costs, Neighborhood Concentrations



Connectivity to Destinations , Neighborhood Concentrations



Driving Alone Commute Time, Neighborhood Concentrations



Carpooling Commute Time, Neighborhood Concentrations



Public Transit Commute Time, Neighborhood Concentrations



Walking Commute Time, Neighborhood Concentrations



Travel Time on Public Transit (New Castle Co. only)



Traffic Volumes, Neighborhood Concentrations



All Vehicle Crashes, Neighborhood Concentrations



Bike Level of Traffic Stress, Neighborhood Concentrations



Public Electric Vehicle Stations, Neighborhood Concentrations



Community Transportation Project Funding, Neighborhood Concentrations



WILMAPCO Community Planning



Knowledge of WILMAPCO



Mobility Burdens

Low-income / Poverty Concentrations

- Transportation Access to Healthy & Affordable Groceries
- Transportation Access to Social Activities
- Transportation Access to Routine Medical Care
- Walking Commute Time, Neighborhood Concentrations
- Traffic Volumes, Neighborhood Concentrations
- All Vehicle Crashes, Neighborhood Concentrations
- Public Electric Vehicle Stations, Neighborhood Concentrations
- Knowledge of WILMAPCO



Mobility Burdens

Blacks / Black Concentrations

- Transportation Access to Job or Desired Job
- Transportation Access to Social Activities
- Travel Time on Public Transit (New Castle Co. only)
- Community Transportation Project Funding, Neighborhood Concentrations
- Knowledge of WILMAPCO



Mobility Burdens

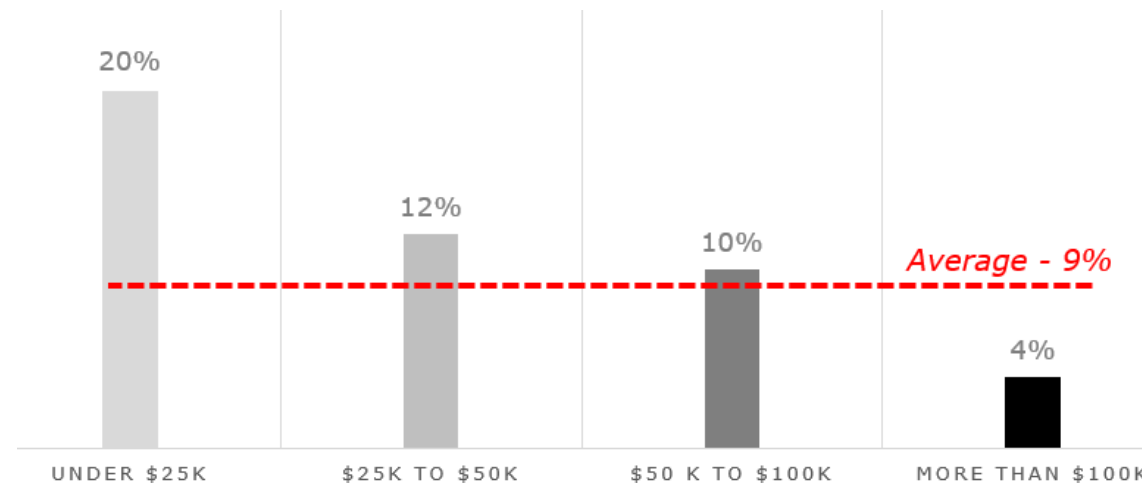
Hispanic / Hispanic Concentrations

- All Vehicle Crashes, Neighborhood Concentrations
- Knowledge of WILMAPCO



Selected Survey Results

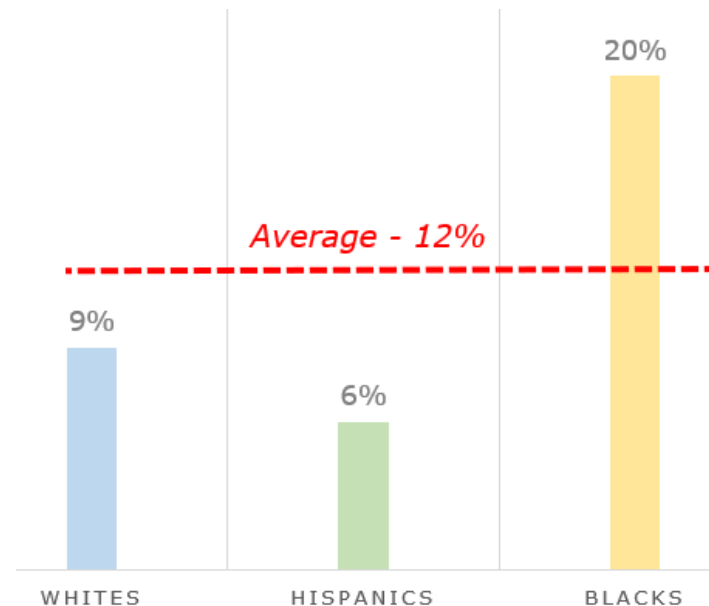
Limited Transportation Access to
Healthy and Affordable Grocery Shopping
by Annual Household Income
WILMAPCO Region, 2022





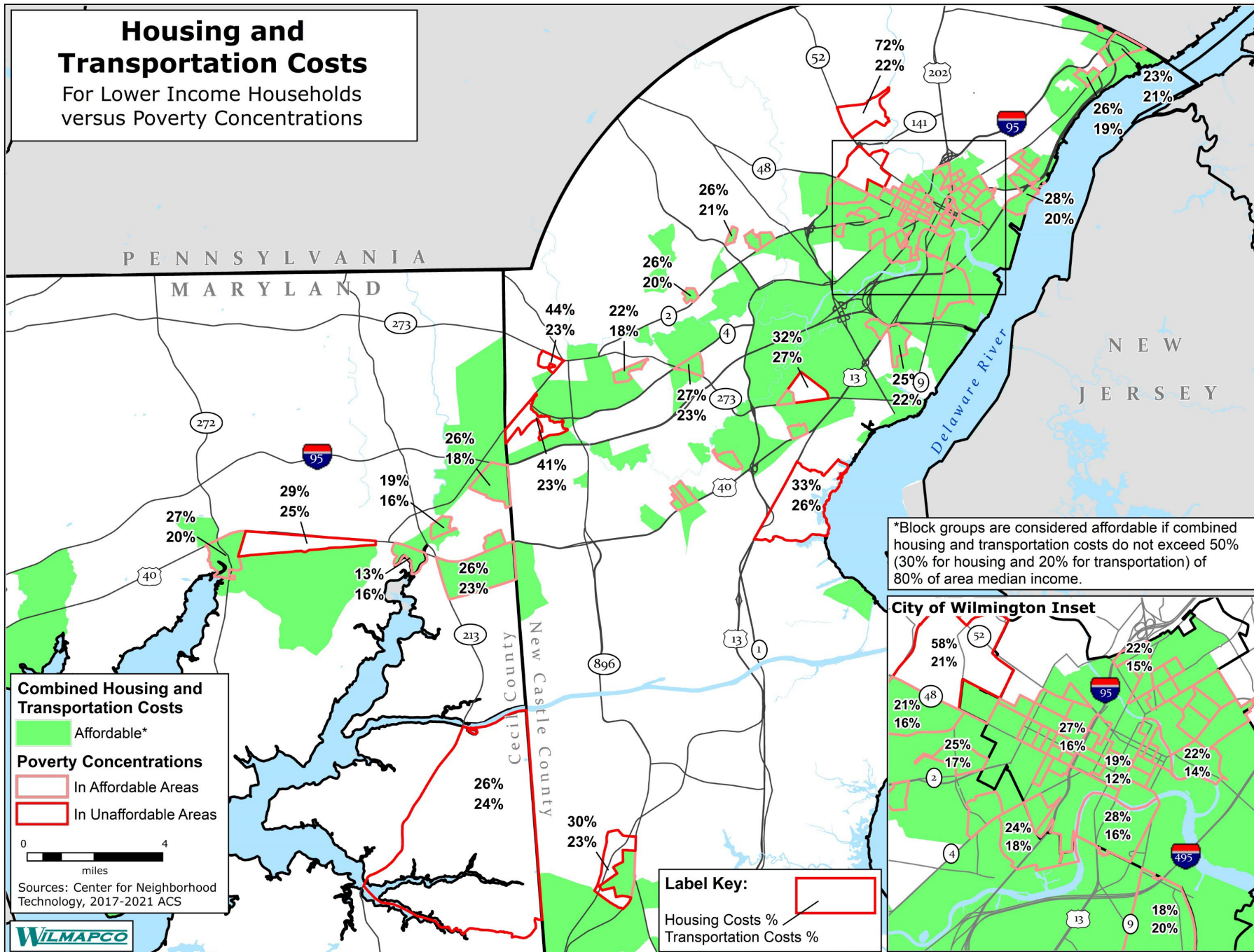
Selected Survey Results

Limited Transportation Access to
Social Activities
by Race and Ethnicity
WILMAPCO Region, 2022



Housing and Transportation Costs

For Lower Income Households
versus Poverty Concentrations



17%

of High Poverty neighborhoods have **unaffordable housing + transportation costs** for lower income households

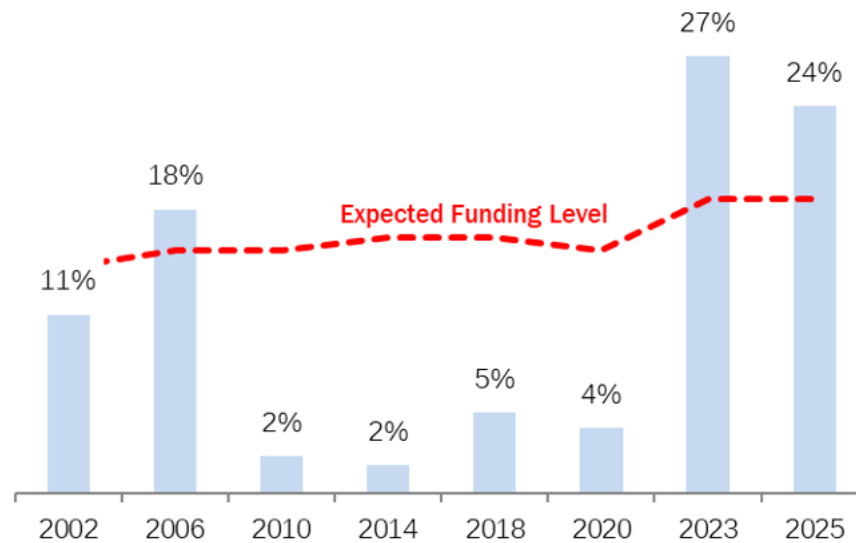
24%

of High Poverty neighborhoods have **unaffordable transportation costs** for lower income households

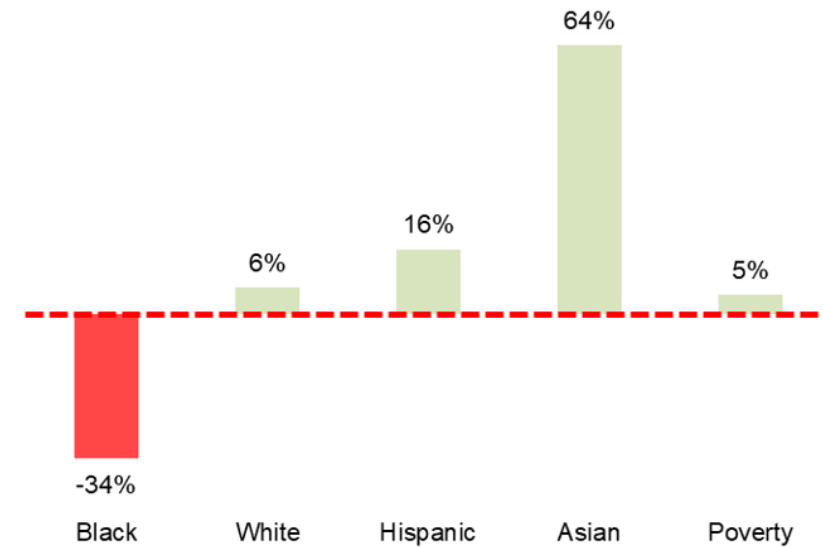


Planned Transportation Spending

Black Concentrations - TIP Funding



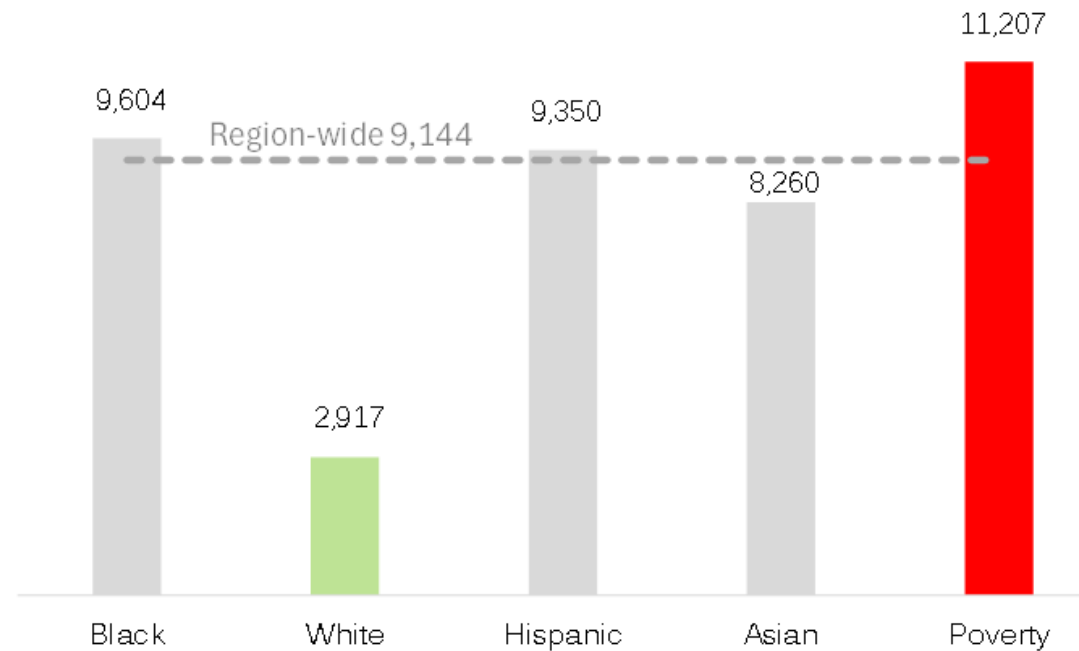
Deviation from Expected TIP Funding – FY 2002 to FY 2025





Traffic Levels

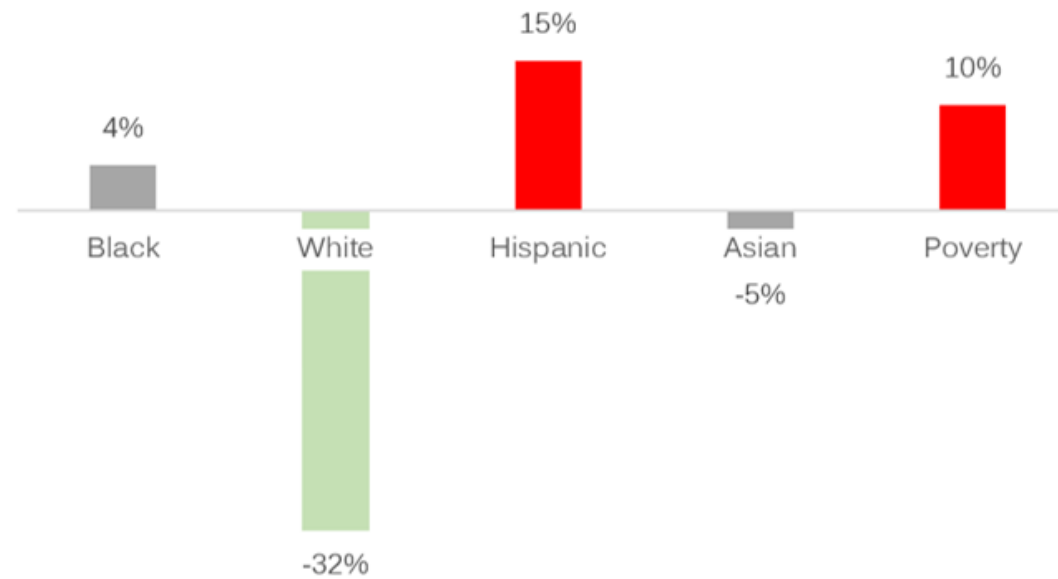
**Median Roadway Traffic Levels
within Areas of Concentration**
WILMAPCO Region

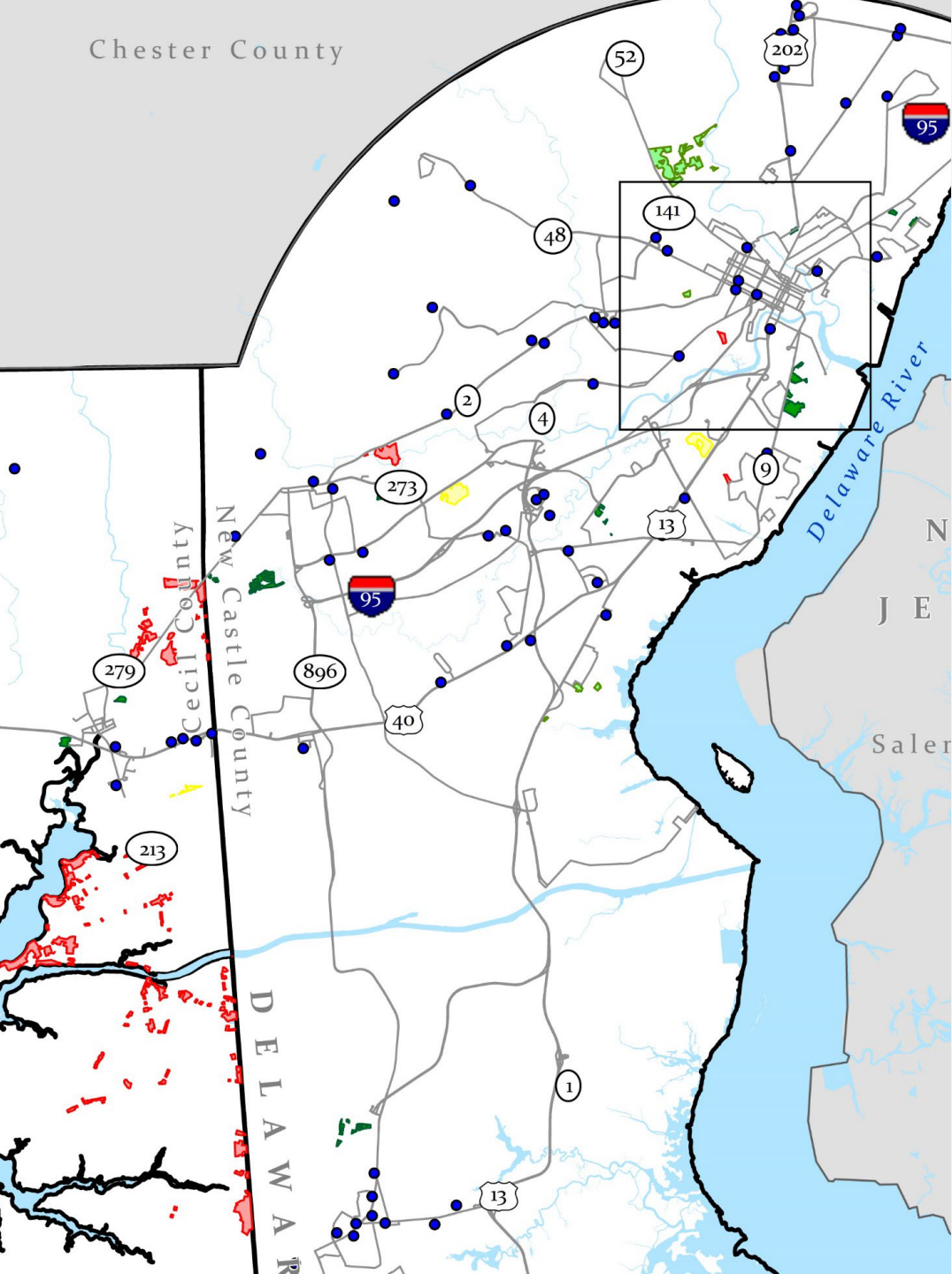




Crashes

All Crashes, 2023
Deviation from Average Block Group Rate
by Group Concentrations





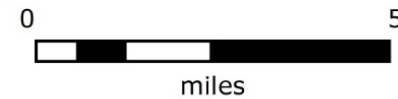
Food Deserts

Transit Connectivity to Supermarkets

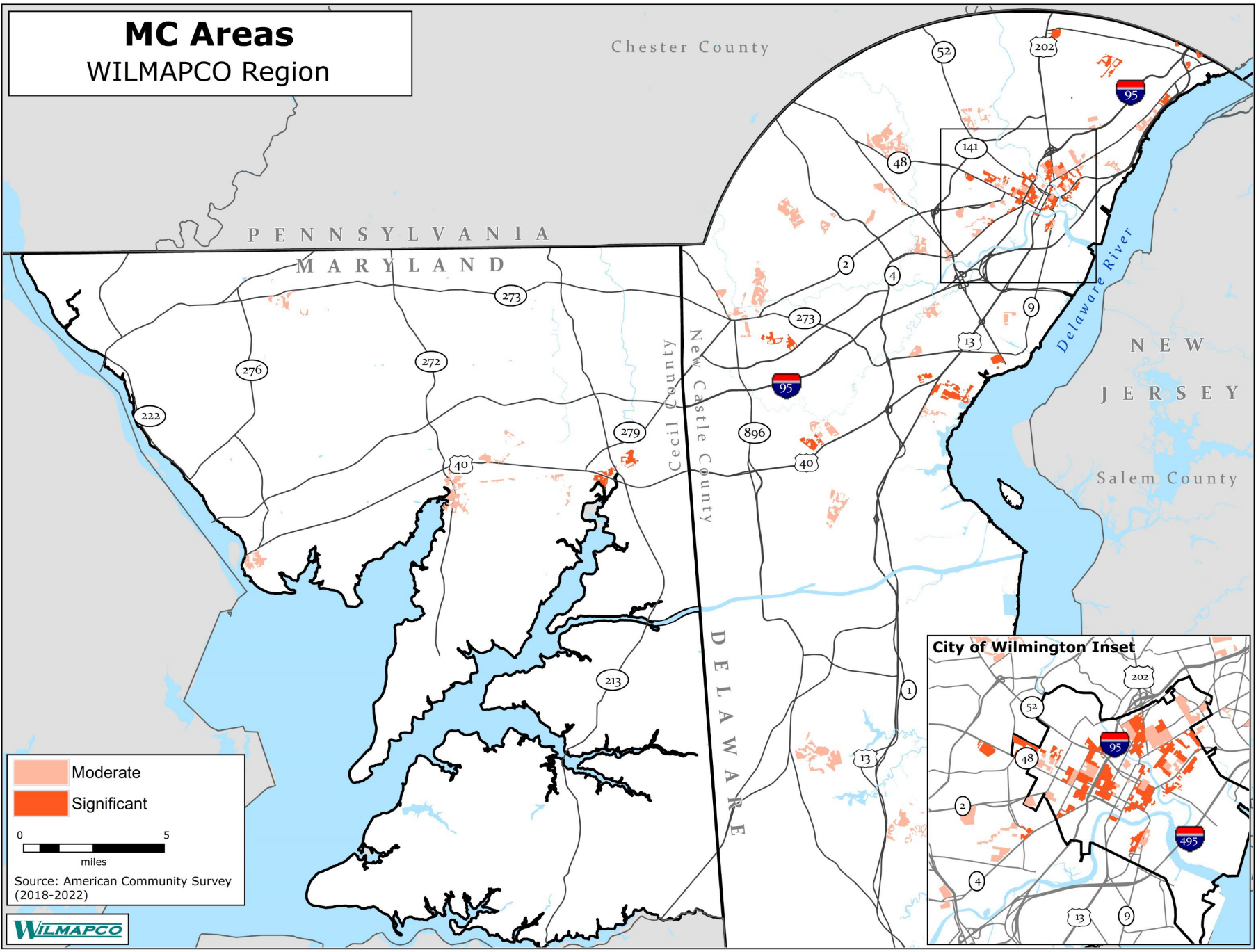


● Supermarkets — Bus routes

WILMAPCO-defined food deserts are residential areas of block groups that are more than 1 mile from a supermarket and where the poverty rate is at least 20%. The transit analysis measures the percentage of housing units within each block that are within a 30-minute door-to-door bus trip to a supermarket at peak time, including no more than 10 minutes walking along subdivision streets, trails, or sidewalks.



Sources: 2018-2022 American Community Survey,
University of Delaware CADSR, DTC, Cecil Transit



- Census: Seniors, disabled, households without vehicles, and youth

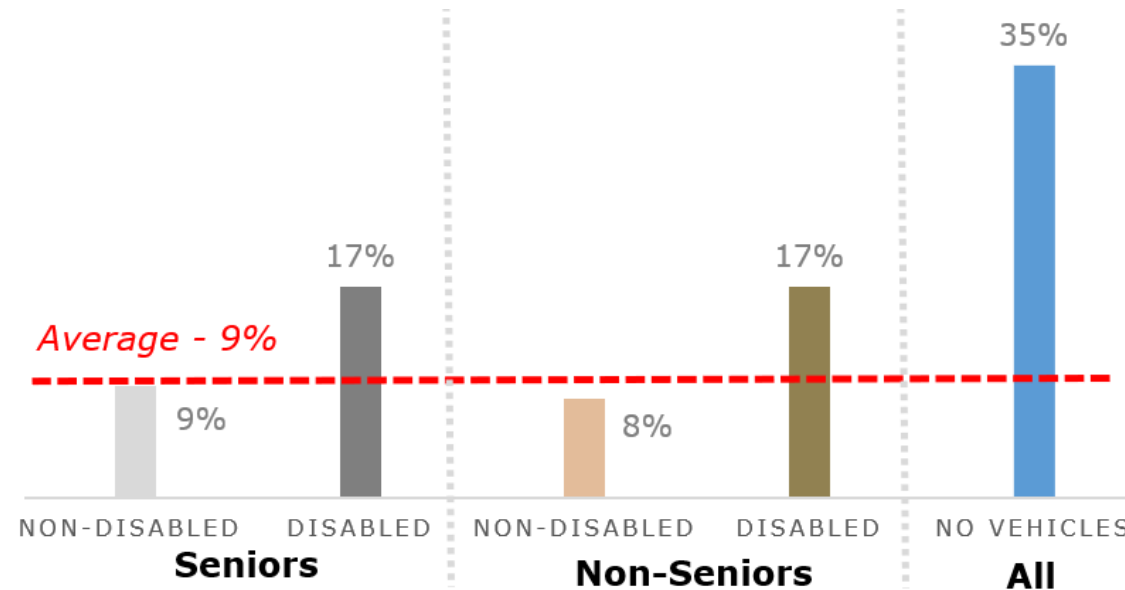
Trims

- Non-residential
- Tiny populations



Selected Survey Results

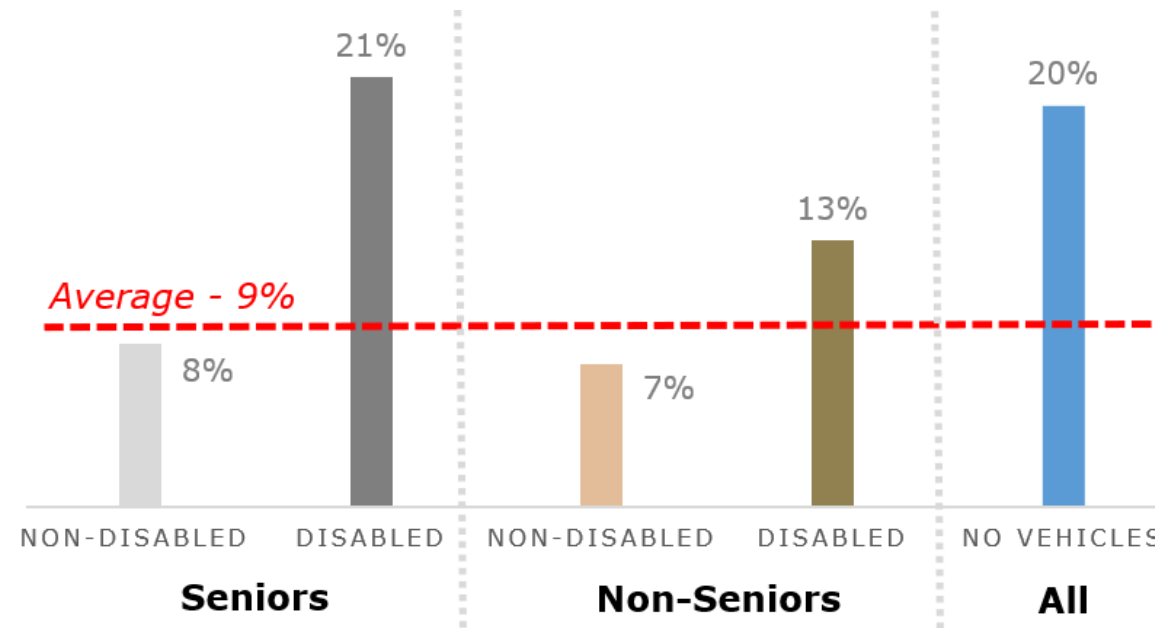
Limited Transportation Access to
Healthy and Affordable Grocery Shopping
 WILMAPCO Region, 2022





Selected Survey Results

Limited Transportation Access to
Routine Medical Care
WILMAPCO Region, 2022





Recommendations



Improve transit access in suburban high-poverty areas to cut transportation costs



Close connectivity gaps between economic opportunity areas and key destinations



Boost walkability from low-income areas to job centers



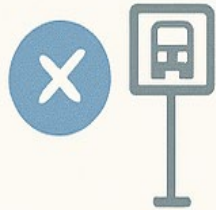
Enhance transit links from food deserts and support nearby grocery development



Recommendations



Support transportation investments in Black neighborhoods to address historic underfunding



Rethink capacity projects; reduce traffic volumes in poor communities



Implement high-scoring aspiration projects with technical merit



Improve road safety in Hispanic and impoverished areas



Install more public EV chargers in impoverished neighborhoods



Recommendations



Ensure all communications meet disability accessibility standards by 2026.



Include youth engagement best practices in the next Public Participation Plan.



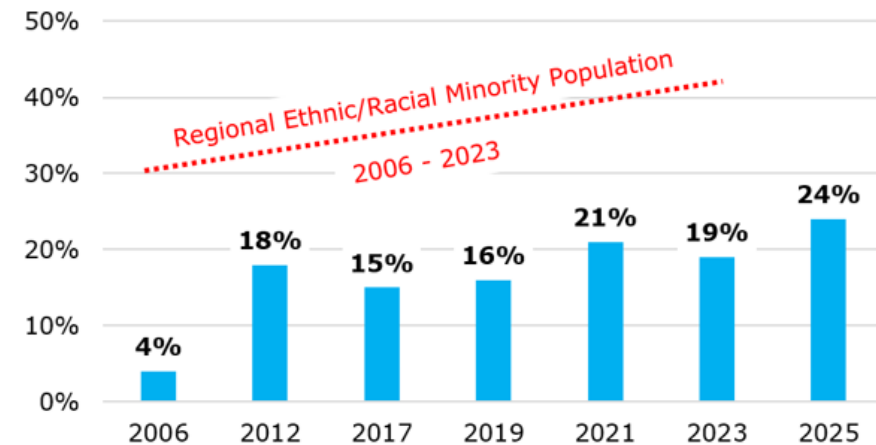
Address connectivity gaps from mobility challenged areas to key destinations.



Public Engagement

- Review of practices
- Selected refinements

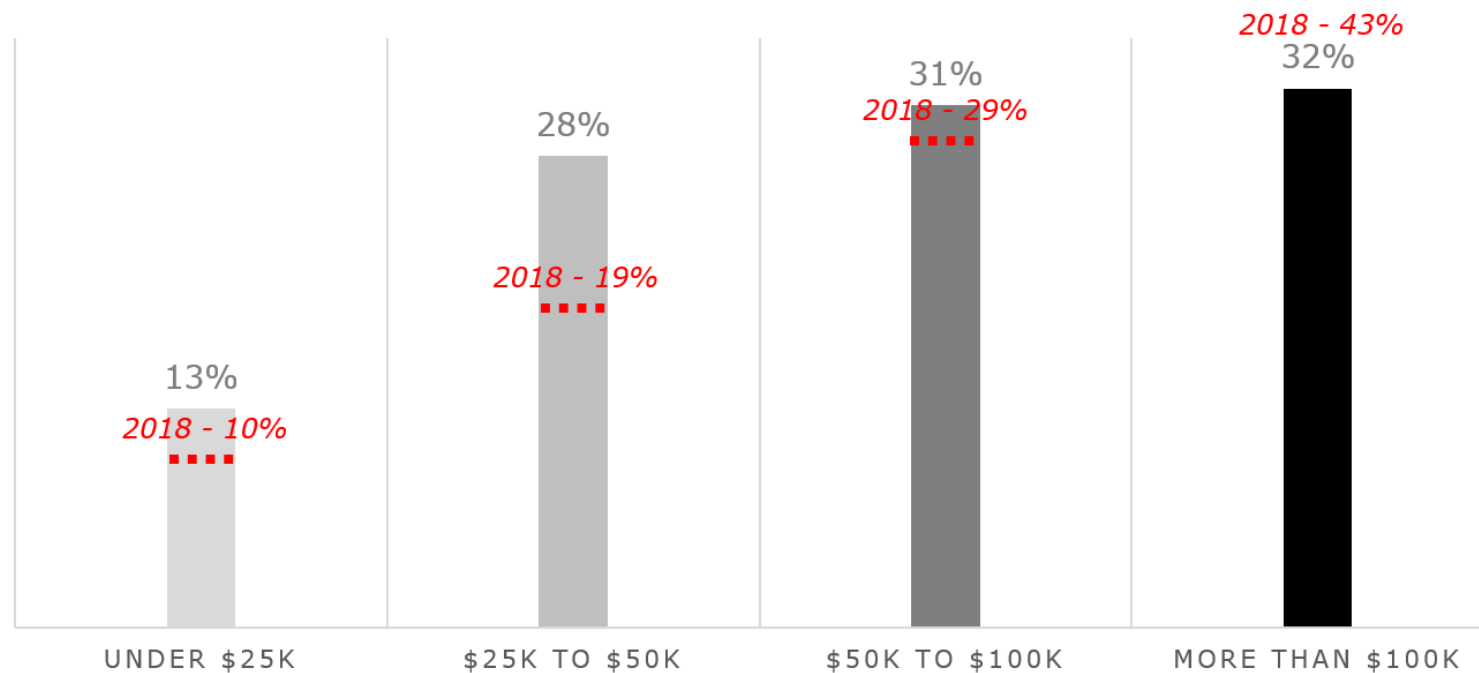
Ethnic/Racial Minority Representation on the WILMAPCO PAC





Selected Survey Results

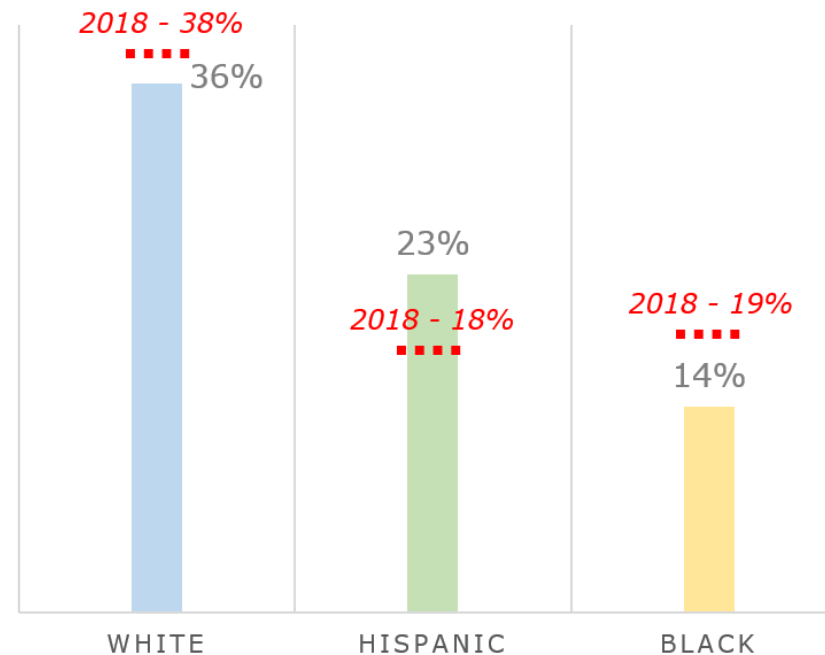
I have heard of WILMAPCO
by Annual Household Income, 2022 vs 2018





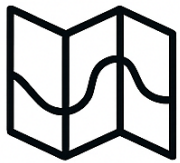
Selected Survey Results

I have heard of WILMAPCO
by Race and Ethnicity, 2022 vs 2018





Recommendations



Optimize workshop locations



Offer child activities at meetings



Determine best practices for youth engagement



Determine best practices for youth engagement



Targeted air quality outreach to lower income residents



Develop strategies to increase minority representation on the PAC



Next Steps

- Document refinement
 - Interactive maps
 - Summary and Executive Summary
- WILMAPCO Committee review
- Projected Council endorsement -- January 2026

