

# Welcome to the Fall 2024 Churchman's Crossing Monitoring Committee Meeting!

## The meeting will begin at 4:00 PM

---

December 10, 2024





# Churchman's Crossing Plan Monitoring Committee

December 10, 2024



# Agenda



This meeting is  
being recorded

1. Welcome and Introductions
2. 2023-2024 CXMC Recap
3. Spotlight Topic: Bicycle/Pedestrian Improvements Follow Up
4. Agency Updates
  - WILMAPCO
  - DelDOT
  - Delaware Transit Corporation
  - NCC Department of Land Use
5. Next Steps
6. Public Comment



# Introductions



# Project Partners



# Members

## Civic, Business, Special Interest, Institutions

- Bike Delaware: Michael Smith
- Christiana Fire Company: Keith Simkins
- Christiana Hospital: Jeff Miller
- Christiana Mall (Brookfield Properties): Steve Chambliss
- Civic League for New Castle County: Bill Dunn
- Committee of 100: Eric Kramer
- Delaware Greenways: Ben Gruswitz
- Delaware Nature Society: Mark Nardone
- Delaware Office of State Planning: Samantha Bulkilvish
- DP Real Estate: Shawn Tucker
- Del-Tech: Nick Dohring
- DNREC: Beth Krumrine
- J.P. Morgan Chase: Cade Kelly
- New Castle County Chamber of Commerce: Emma Odren
- Rutherford Community: Patti Beauchesne
- Village of Christiana: Barry Shotwell

## Project Partners

- WILMAPCO: Dan Blevins, Dave Gula
- DelDOT: Cooper Bowers
- NCC: Matthew Rogers
- DTC: Cathy Smith

## State/County Elected Officials

- New Castle County Council
  - President: Monique Williams-Johns
  - District 1: Brandon Toole
  - District 7: George Smiley
  - District 9: Timothy Sheldon
  - District 11: David Tackett
- State Elected Officials
  - State Senate District 7: Spiros Mantzavinos
  - State Senate District 9: John Walsh
  - State Senate District 11: Bryan Townsend
  - State Senate District 13: Marie Pinkney
  - State Representative District 17: Melissa Minor-Brown
  - State Representative District 18: Sophie Phillips
  - State Representative District 19: Kimberly Williams
  - State Representative District 21: Frank Burns
  - State Representative District 24: Edward Osienki
  - State Representative District 26: Madinah Wilson-Anton





## Project Support Team

- RK&K: Mark Tudor, Jim Burnett, Stephanie Everett, Katie Gibson
- Kramer & Associates: Andrew Bing

# 2023-2024 CXMC Recap



# 2023-2024 CXMC Recap

-  Held 3 CXMC meetings and 1 public workshop
-  Published the 2023 Annual Churchman's Crossing Monitoring Report ([bit.ly/churchmans2023](https://bit.ly/churchmans2023))
-  Established a new CXMC framework to advance projects and studies, and help move forward other initiatives in the Churchman's Crossing area
-  Initiated bike/ped prioritization process



# Goal of the 2024-2025 CXMC



**Advance Churchman's Crossing  
Plan Update Recommendations**

# How we will accomplish our goal



# How we will accomplish our goal

By monitoring, sharing, discussing, advocating...

- Churchman's Crossing Plan Update – Recommendations
- Spotlight Topics
- Agency Updates at each CXMC Meeting
- 2024 Annual Churchman's Crossing Monitoring Report
- Spring 2025 Public Workshop

# New Framework



- More active role of Committee members in working with the project team to advance projects and studies, and help move forward other initiatives within the Churchman's Crossing area
- New framework will allow Committee members and the public to both:
  - Bring new ideas not currently in the Plan Update to agency partners for possible inclusion into an "addendum" to the existing plan
  - Continue to prioritize or highlight existing projects and studies currently in the Plan



# New “Meeting Cycle”

WE ARE  
HERE

## Fall Meeting

- Report back on prior year’s meeting cycle and inform the Committee of which initiatives, if any, will be added as an addendum or which existing initiatives may be (re)prioritized

## ■ Winter Meeting

- Introduce Draft Monitoring Report to assist Committee in developing new initiatives and/or revised priorities
- Formalize new initiatives with the Committee and create draft addendum to the existing Plan

## ■ Spring Public Workshop

- Share the Monitoring Report with the public and introduce and seek feedback on the Committee’s ideas of new initiatives

## ■ Summer

- Agency partners will determine which new initiatives, if any, will be added to the Plan as an addendum

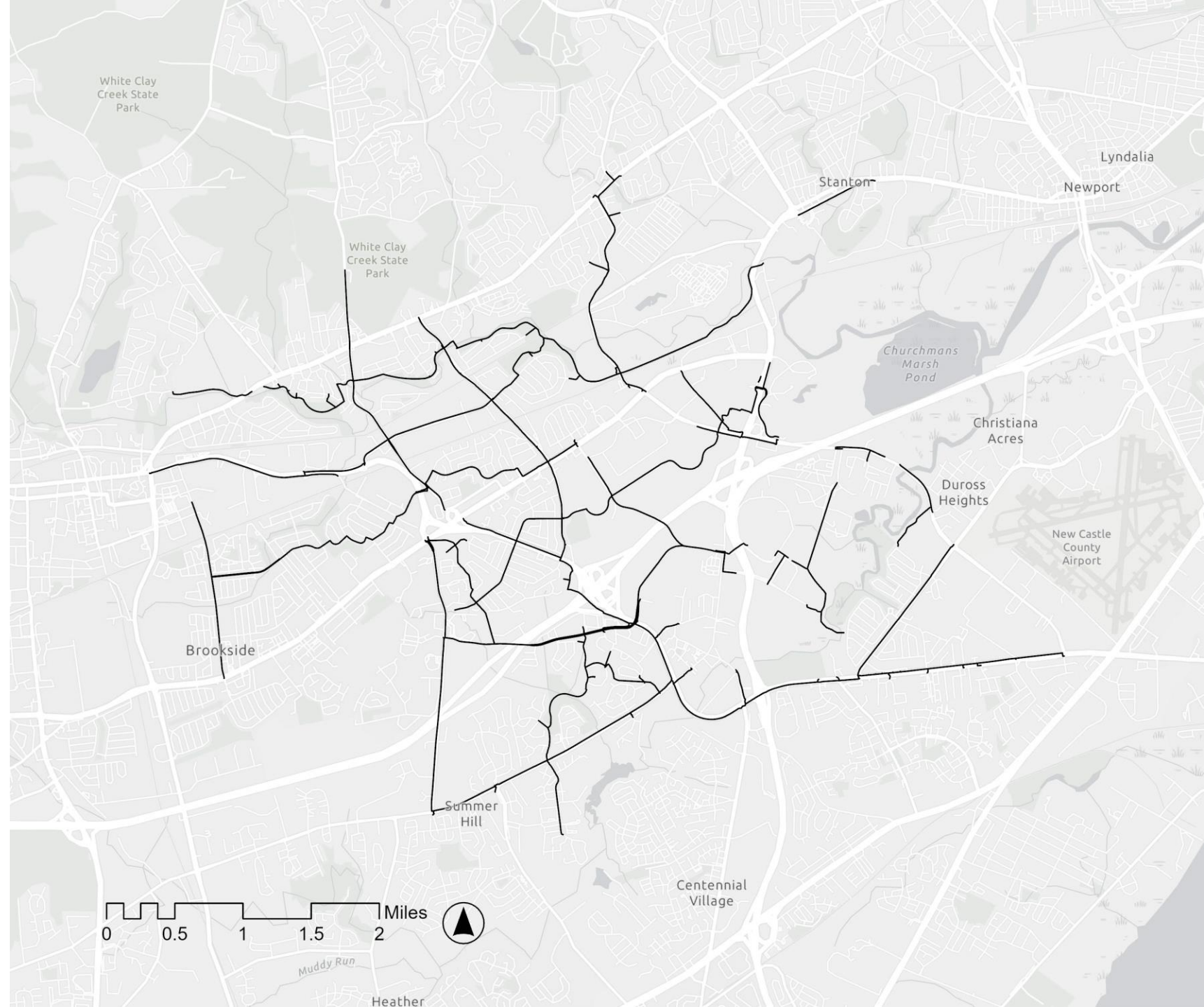
# Spotlight Topic: Bicycle/Pedestrian Improvements Follow-Up





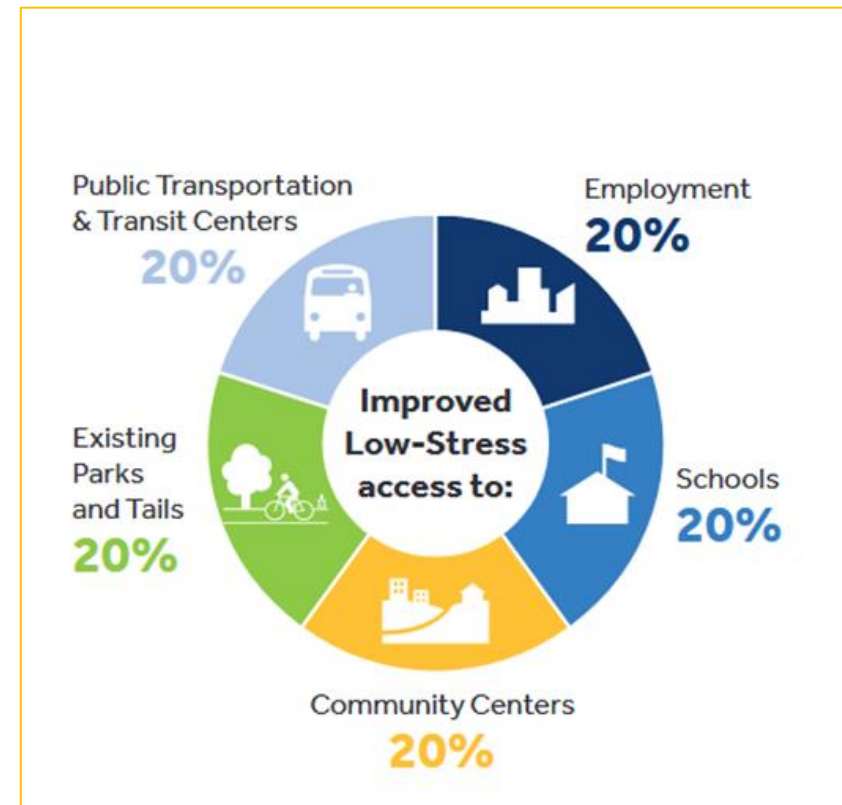
# Where we left off...

- Built a potential network through technical, committee, and public input
- Divided segments into logical termini
- Began analysis of potential benefits of each individual segment per Level of Traffic Stress



# Ranking Projects

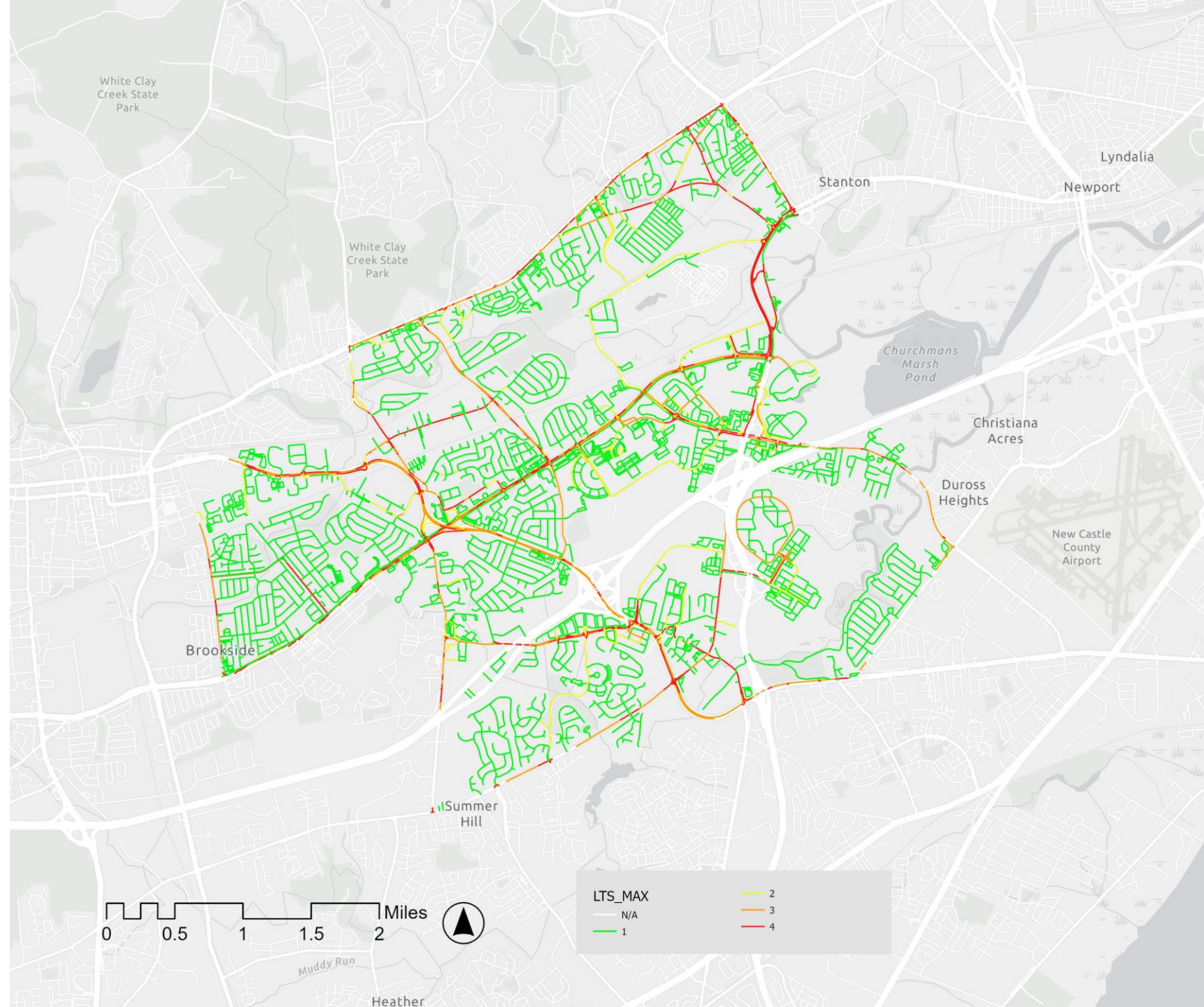
- Each project was evaluated using the DeIDOT Bicycle Mobility Tool
- Which Project Increases low-stress access to the most households to:
  - Community Centers
  - Employment Centers
  - Parks
  - Schools
  - Transit
- Cost Benefit





# Level of Traffic Stress

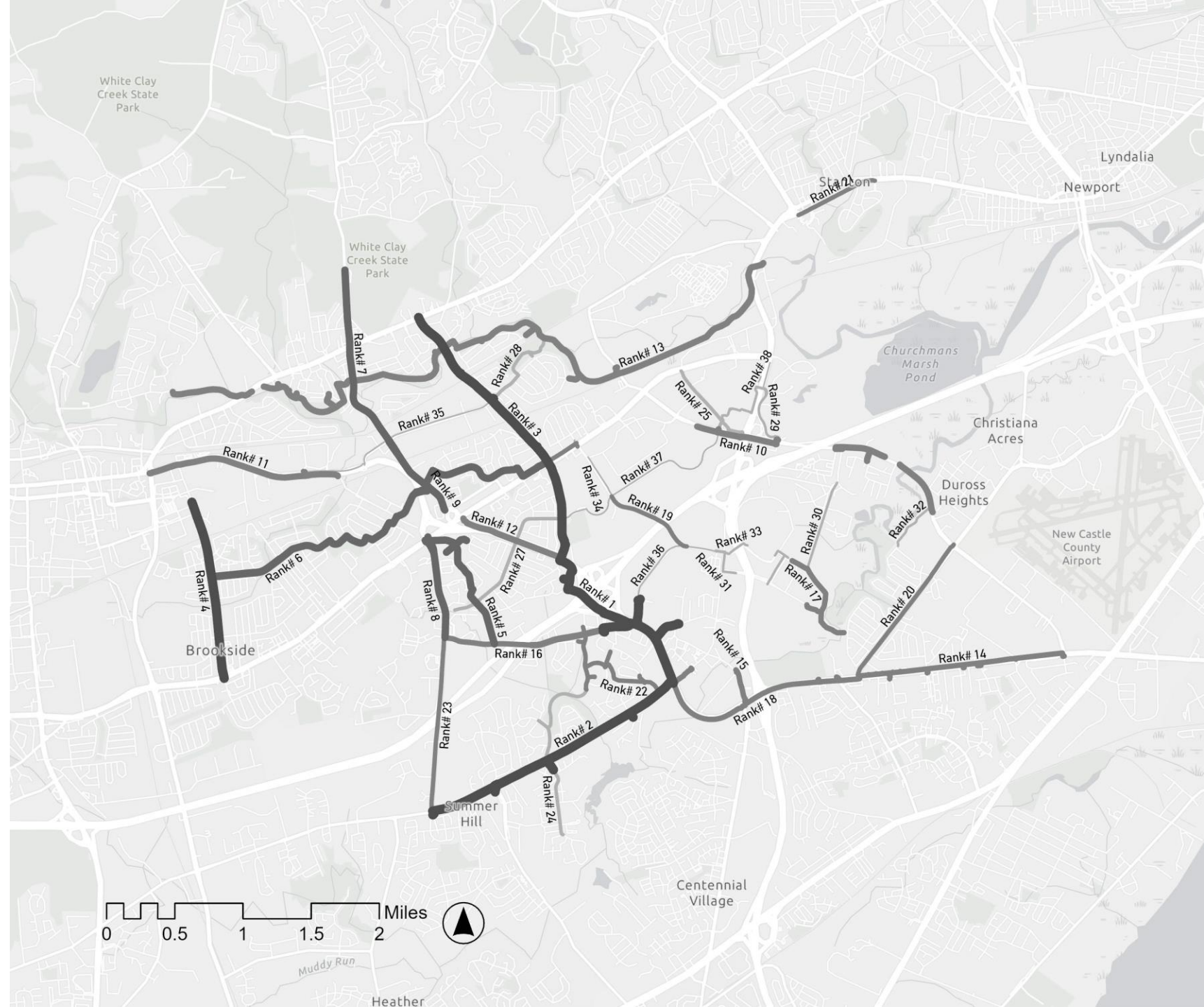
- LTS 1: Low stress, suitable for children
- LTS 2: Little stress, requires heightened attention
- LTS 3: Moderate stress, appropriate for confident cyclists
- LTS 4: High stress, for highly confident and capable cyclists



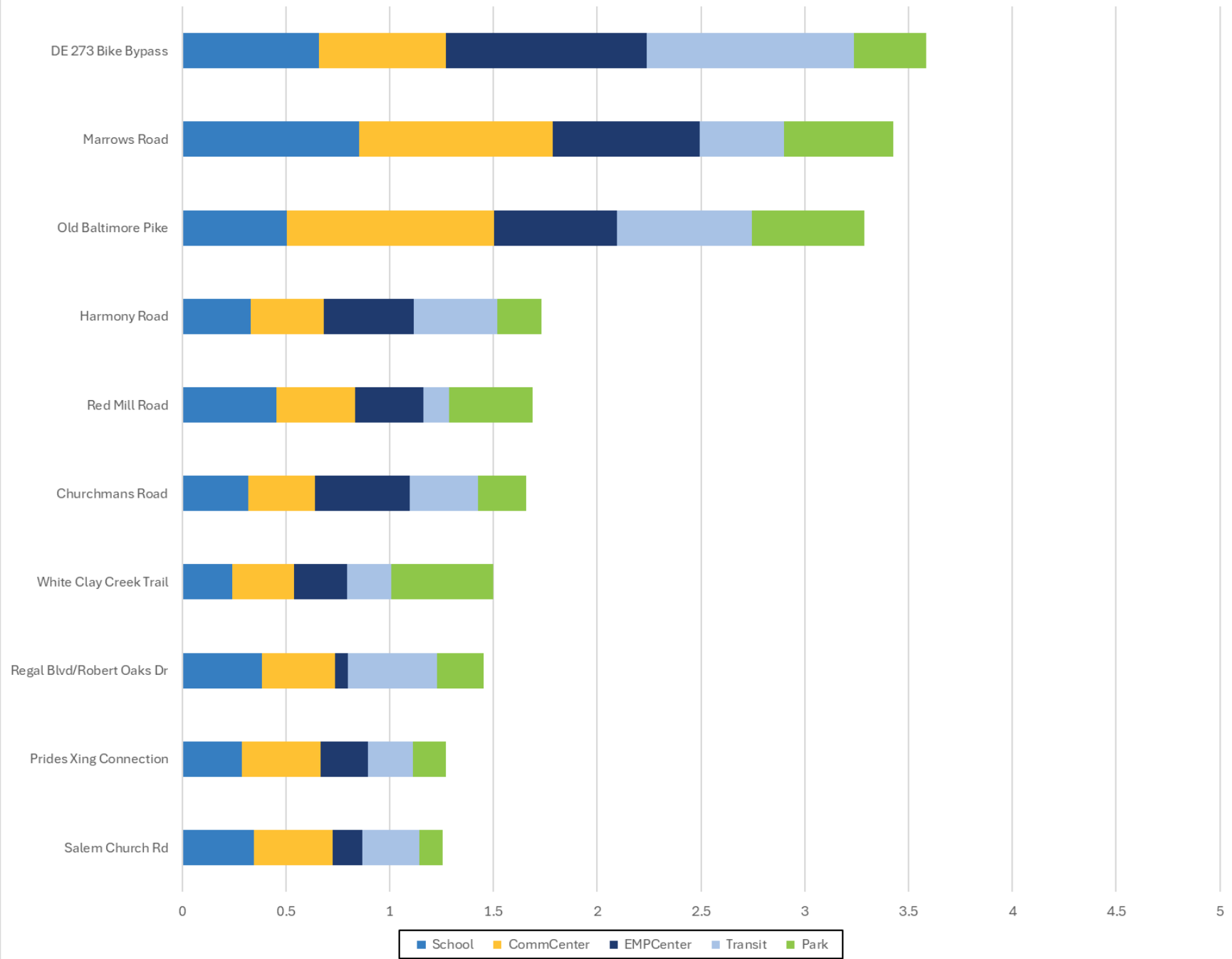


# Ranking Outcomes

- Darker, thicker segments ranked higher in terms of benefit
- Accounts for all point-of-interest types
- Measured by increase possible low-stress trips



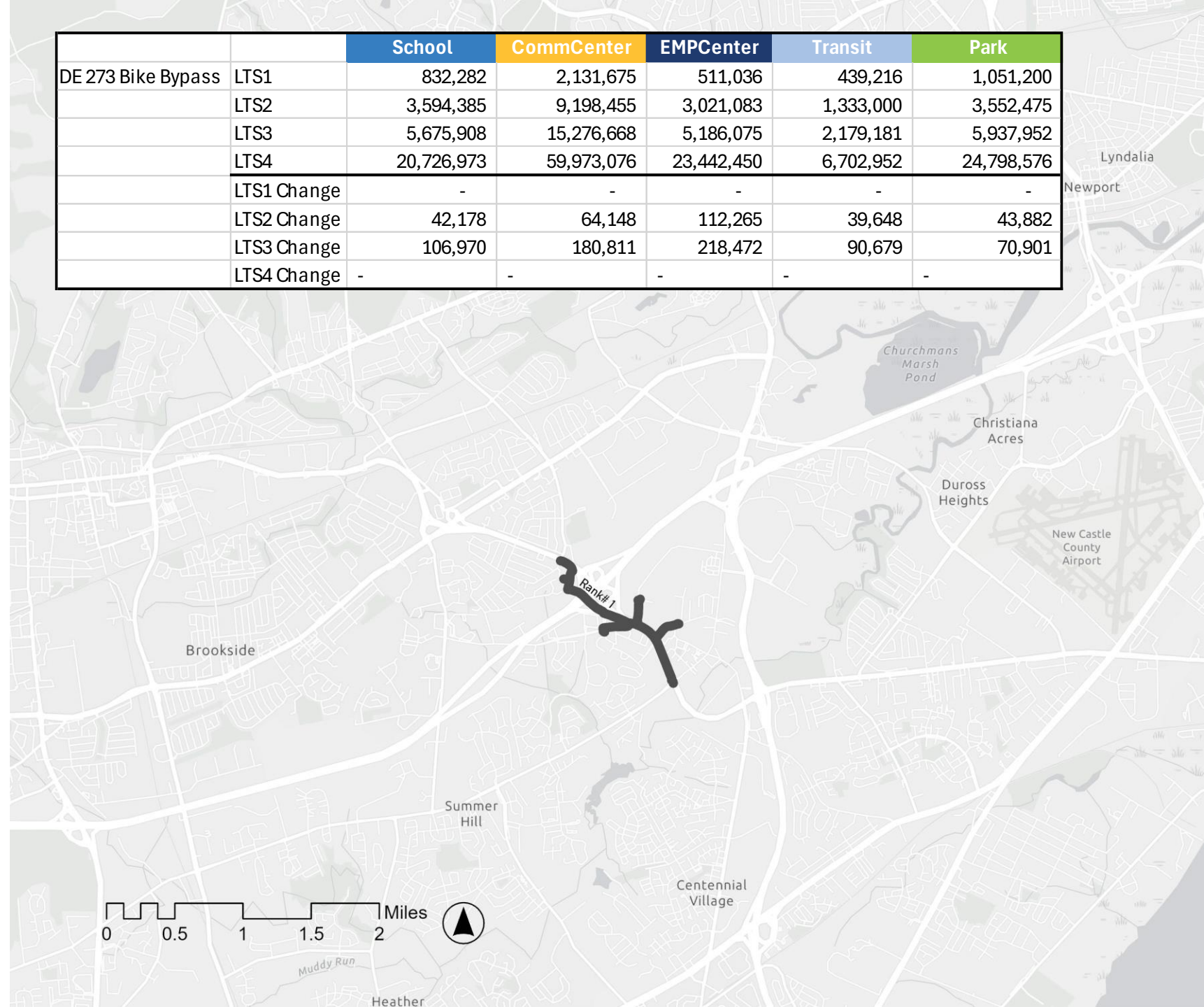
Scaled Improvement



# Top Ranked Project

- DE 273 between Old Baltimore Pike and Harmony Road
- Creates a connection across I-95 – a major barrier in the study area

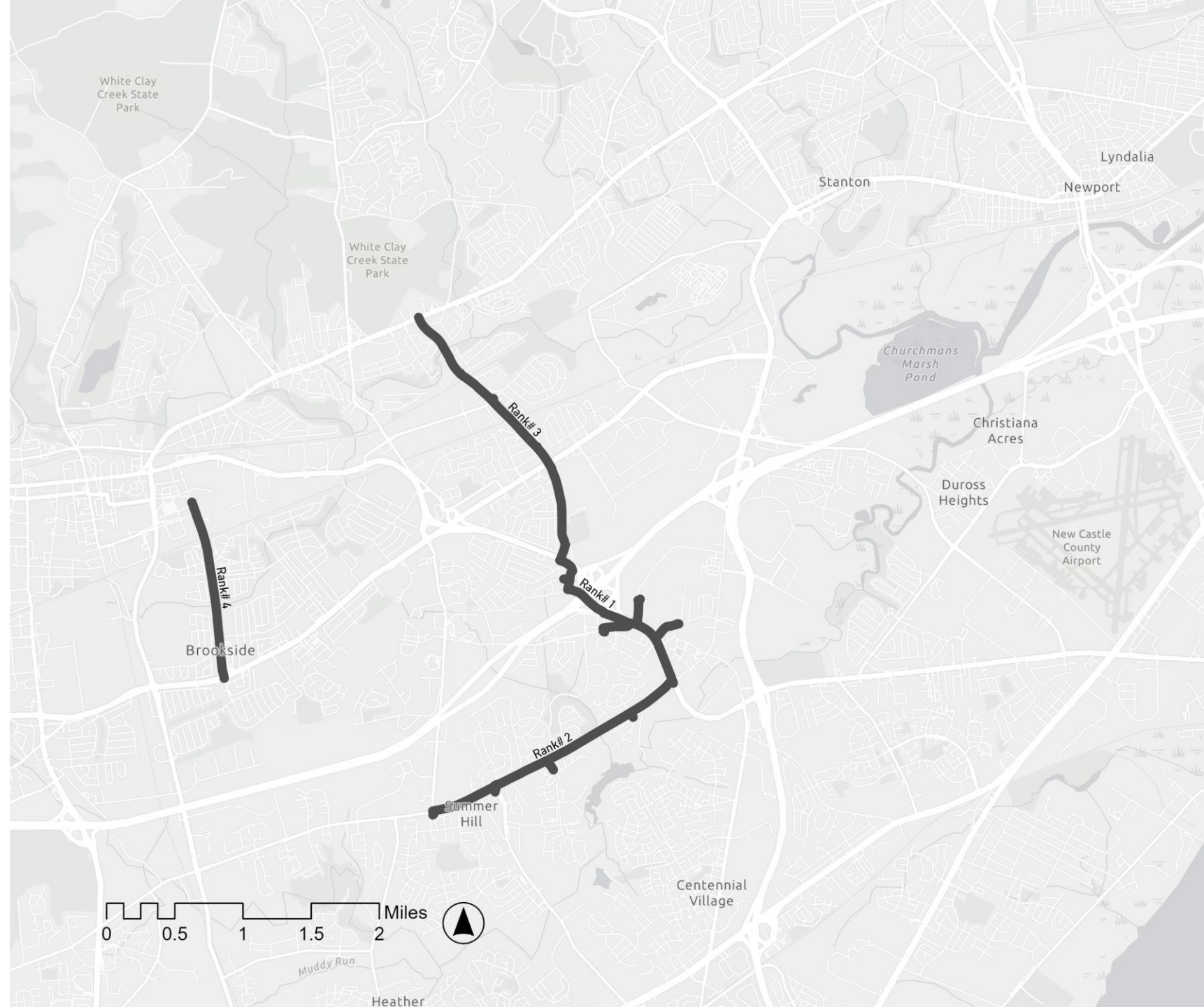
		School	CommCenter	EMPCenter	Transit	Park
DE 273 Bike Bypass	LTS1	832,282	2,131,675	511,036	439,216	1,051,200
	LTS2	3,594,385	9,198,455	3,021,083	1,333,000	3,552,475
	LTS3	5,675,908	15,276,668	5,186,075	2,179,181	5,937,952
	LTS4	20,726,973	59,973,076	23,442,450	6,702,952	24,798,576
	LTS1 Change	-	-	-	-	-
	LTS2 Change	42,178	64,148	112,265	39,648	43,882
	LTS3 Change	106,970	180,811	218,472	90,679	70,901
	LTS4 Change	-	-	-	-	-





# Top 4 Ranked Projects

- DE 273 and Old Baltimore Pike; Marrows Road
- This will be one of the first tested combined scenarios



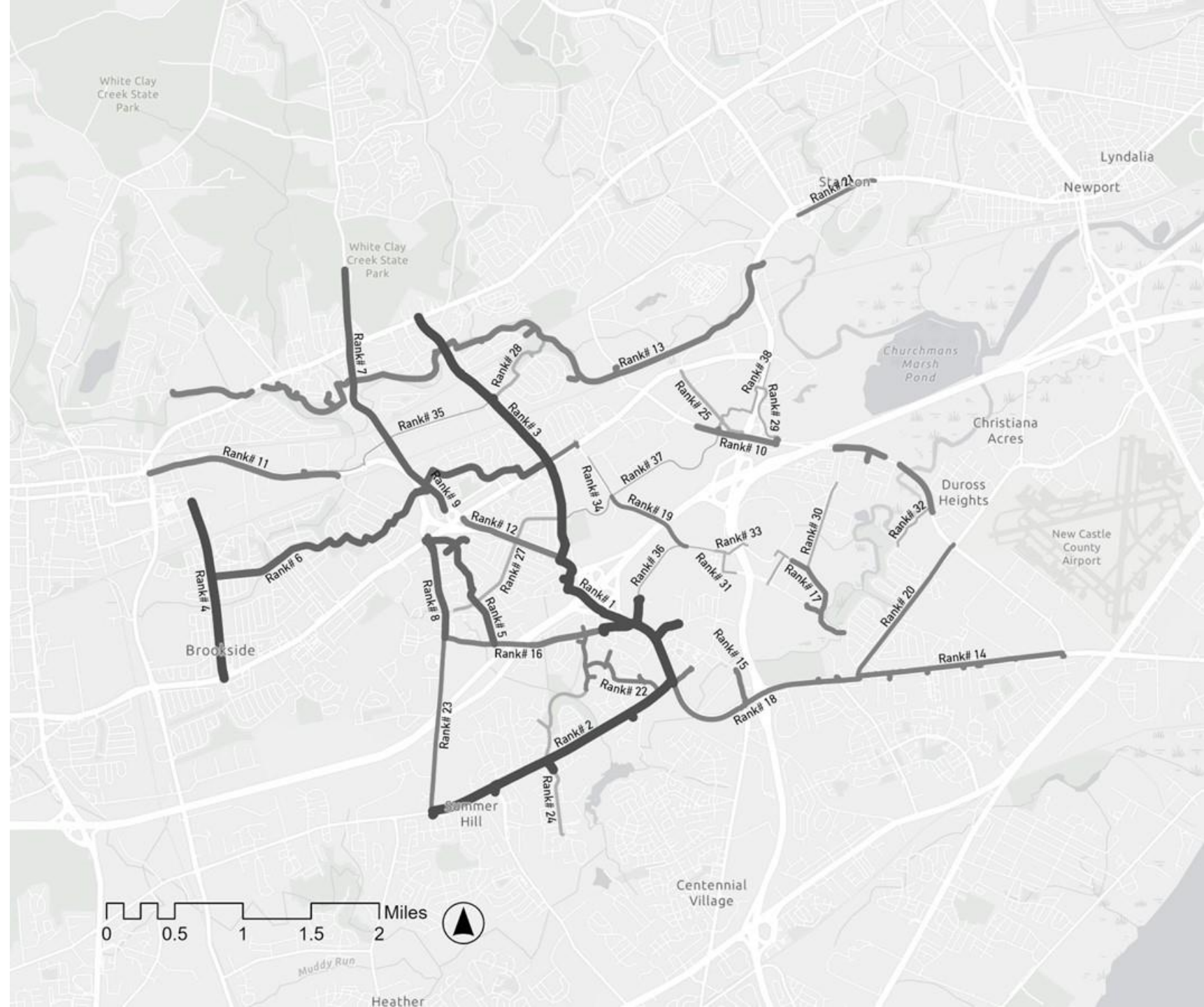
# Next Steps



- Developing and quantifying the benefit of multi-project scenarios
- Which Project Increases low-stress access to the most households to:
  - Community Centers
  - Employment Centers
  - Parks
  - Schools
  - Transit
- Cost Benefit

# Potential Scenarios

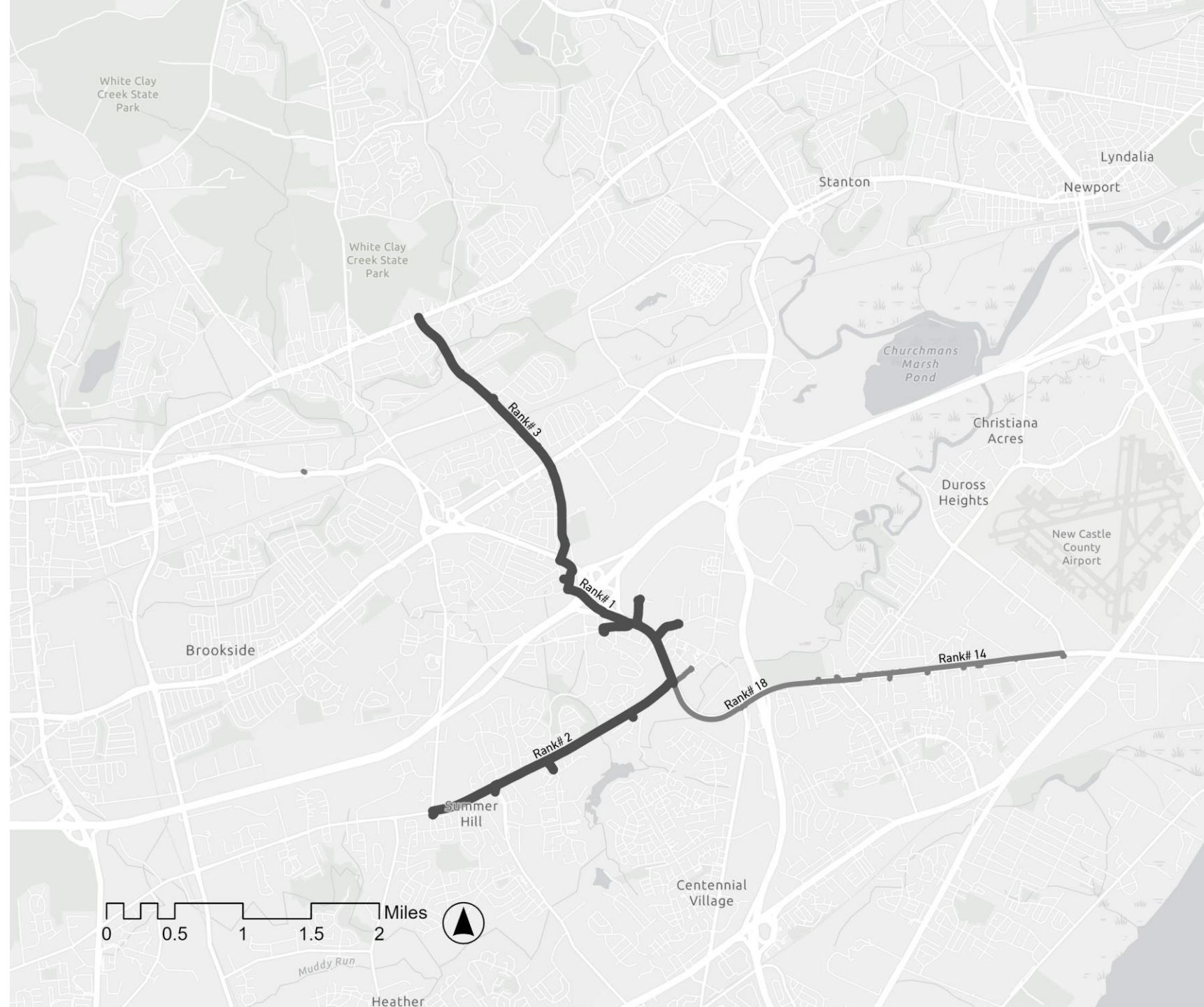
- Looking at maximum total benefit
- Segments interaction with each other will affect overall build benefit
- Looking for north-south and east-west connections





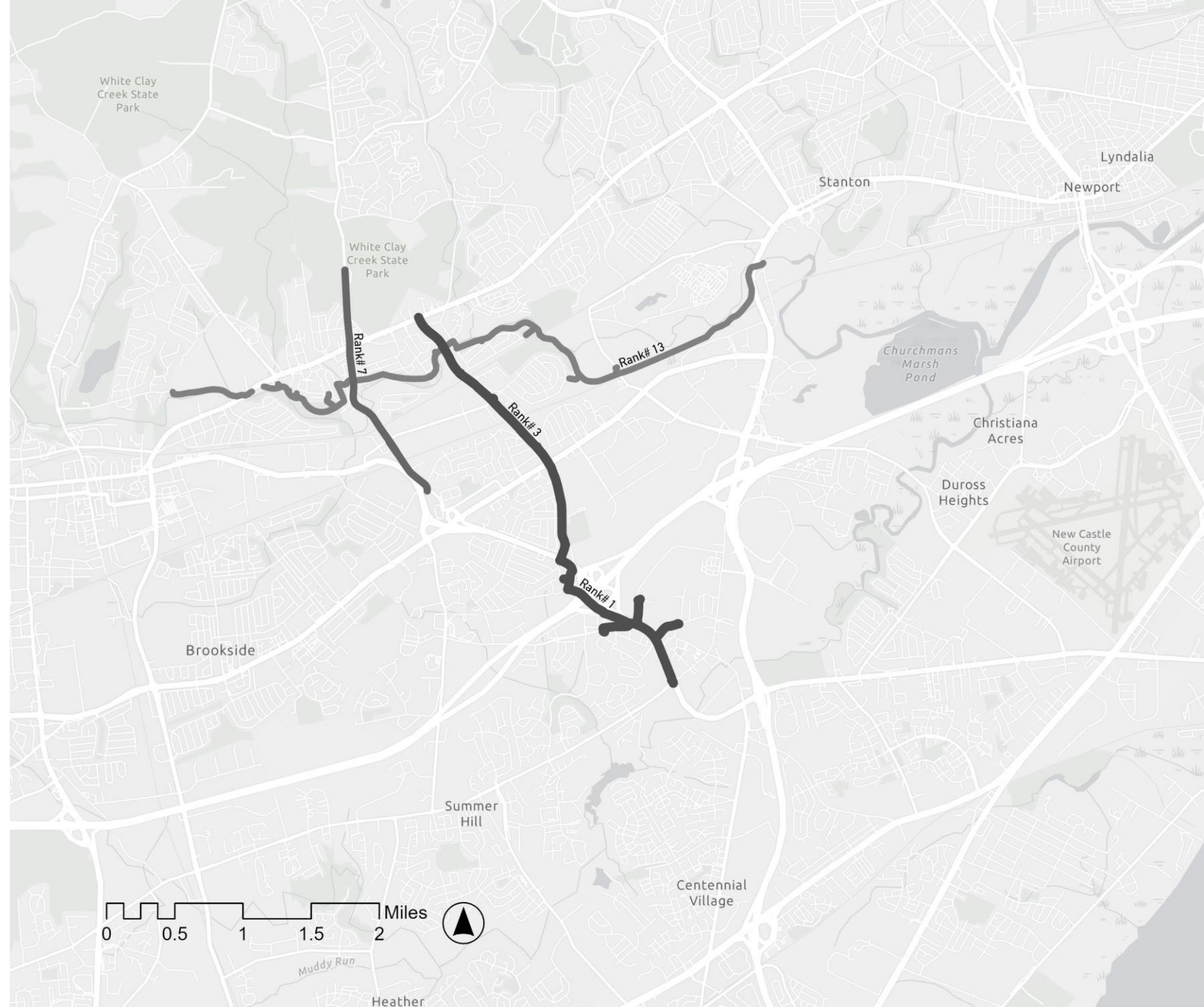
# Potential Scenarios

- Looking at maximum total benefit
- Segments interaction with each other will affect overall build benefit
- Looking for north-south and east-west connections



# Potential Scenarios

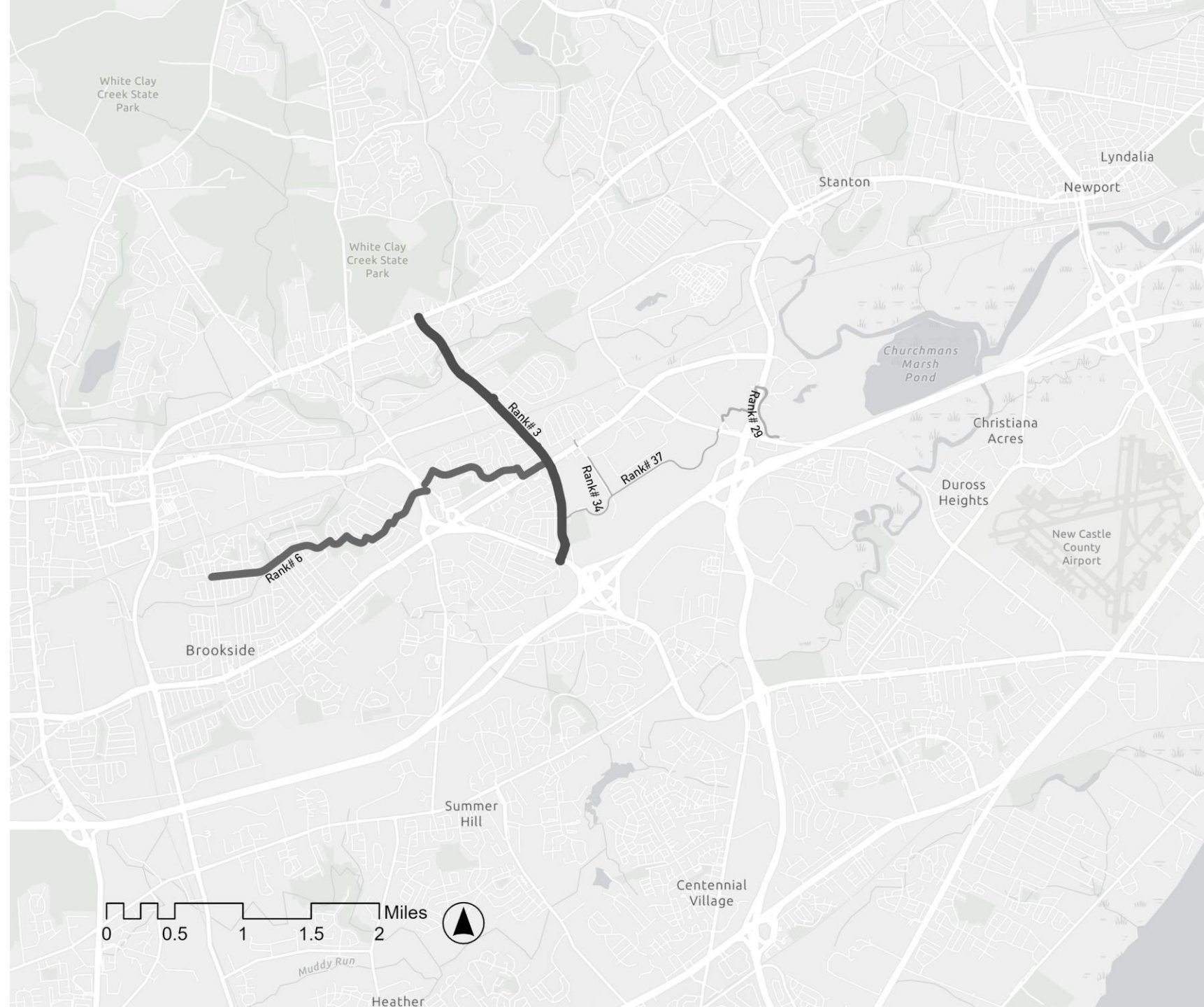
- Looking at maximum total benefit
- Segments interaction with each other will affect overall build benefit
- Looking for north-south and east-west connections





# Potential Scenarios

- Looking at maximum total benefit
- Segments interaction with each other will affect overall build benefit
- Looking for north-south and east-west connections





# Look-Ahead Schedule

- Multi-part scenario development and testing: Spring 2025
- Projects development and recommendations: Summer 2025

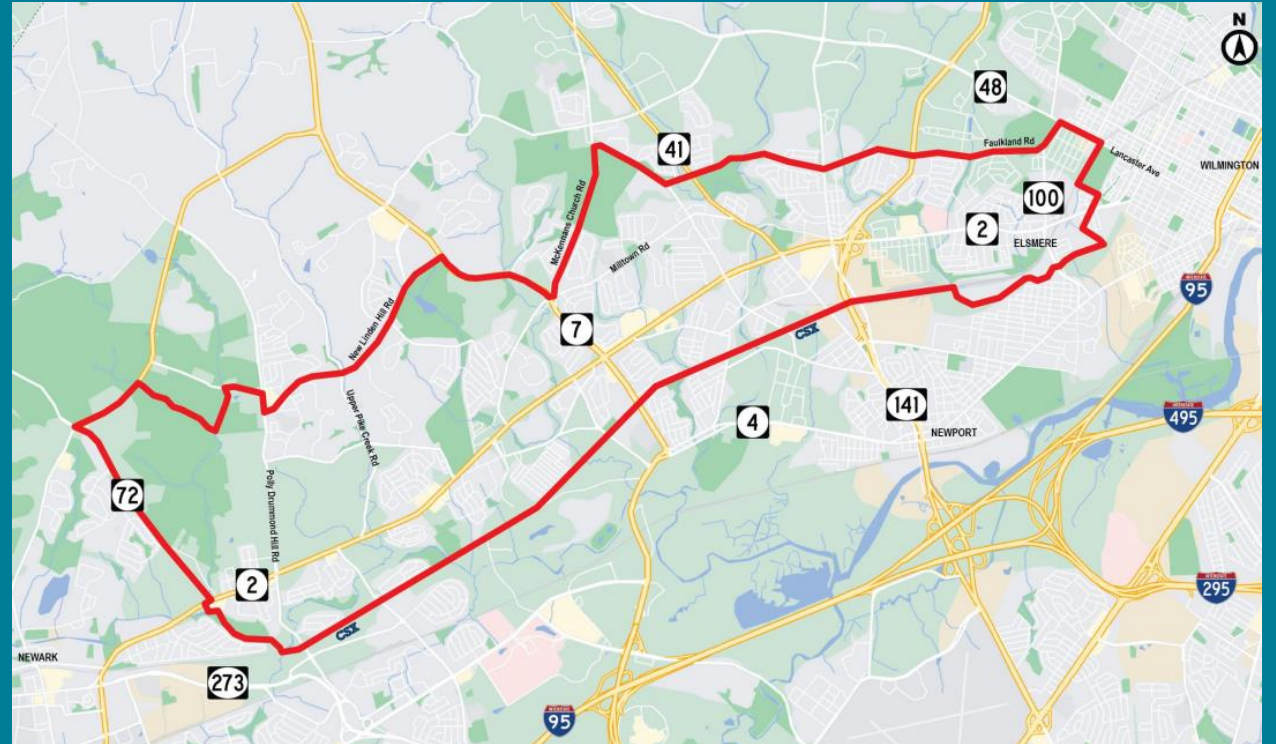
# Agency Updates

- WILMAPCO
- Delaware Transit Corporation
- DelDOT
- NCC Department of Land Use



# WILMAPCO:

- Kirkwood Highway Land Use and Transportation Study:
  - Draft Alternatives Workshop held on November 14, 2024
  - Final Workshop February 2025
  - Final Report by June 2025
  - [wilmapco.org/Kirkwood](http://wilmapco.org/Kirkwood)



# DART:

- Changes for May 2024 Service Change
  - Route 5 goes to Christiana Hospital

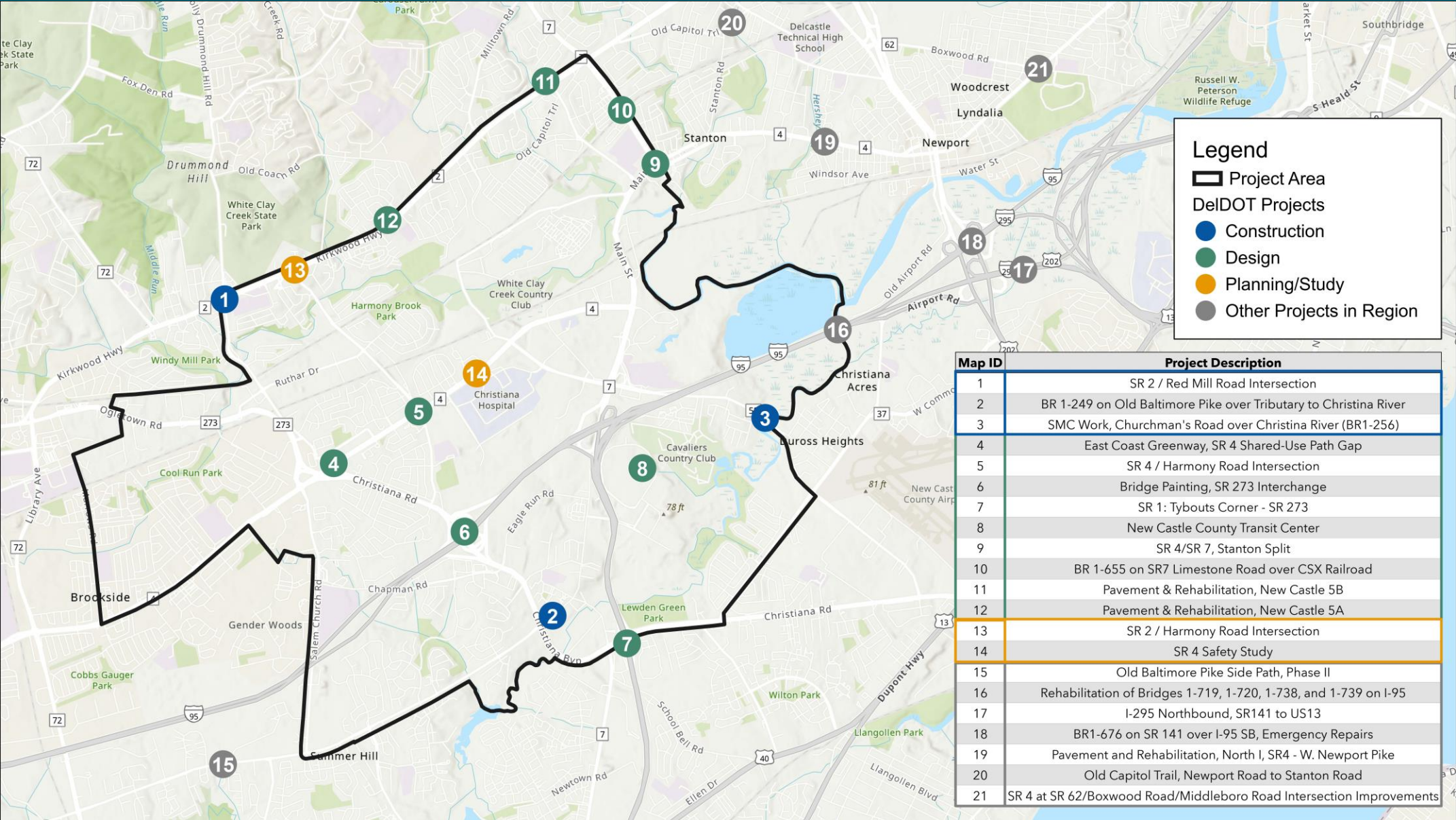
Route 5	Weekday		Saturday		Sunday	
	Boards	Leaves	Boards	Leaves	Boards	Leaves
Toward the Mall	10	47	6	26	2	15
Toward Wilmington	52	9	32	6	14	2

- Ridership on Route 33 slightly increased at the Hospital, so ridership increased instead of shifting
- Select weekday Route 15 trips go to the Hope Center (only while traveling to the Mall)
  - 7 boards and 8 leaves
- November 2024 Changes
  - Route 64 extended to the Hospital, and ending at Fairplay Station. Except Sunday
  - Routes 37, 42, 44, and 62 were eliminated due to low ridership
  - Route 10 was rerouted to serve US-13 corridor



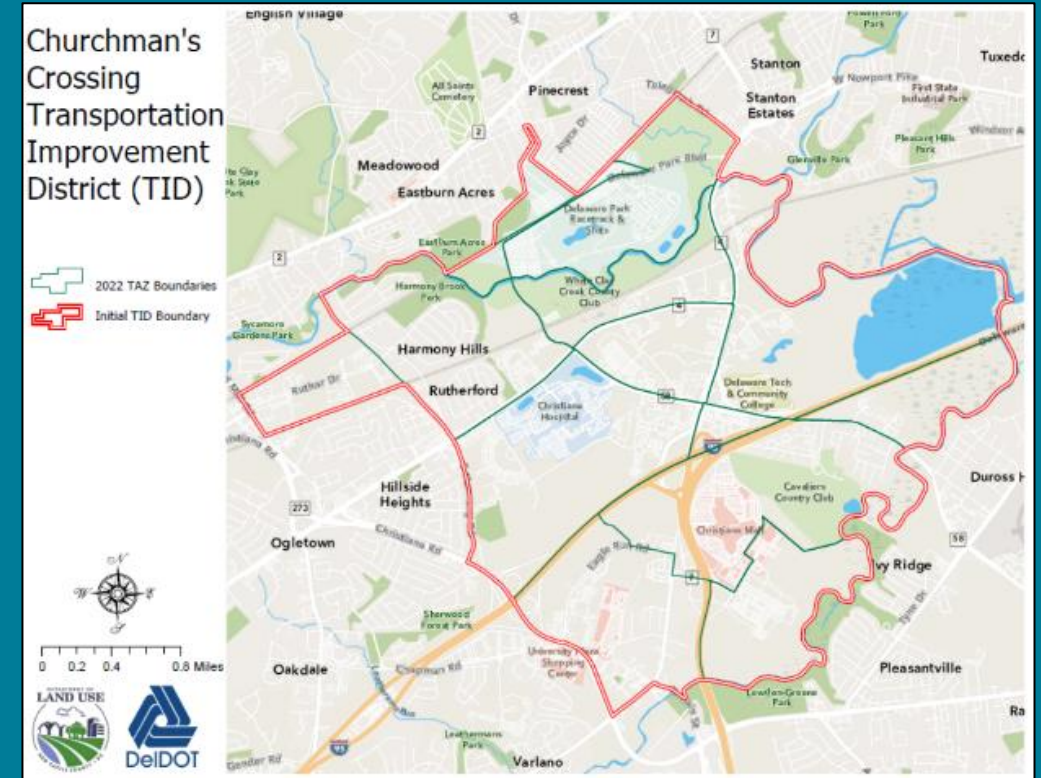
# DeIDOT Capital Project Updates

DeIDOT Project Portal: <https://deldot.gov/projects/>  
DeIDOT Safety Website: [www.safety.deldot.gov](http://www.safety.deldot.gov)



# Transportation Improvement District Updates

- Underway
  - Establishing Service Standards primarily focused on Arterial Level of Service and Travel Times
  - Identification of CXTID Transportation Projects
  - Fee Structure
- Next Steps
  - Community Information Meeting
  - Planning Board Public Hearing
  - County Council



TID Boundaries



Scan here to  
learn more



# NCC DLU:

- Redevelopment Ordinance

# Next Steps





# CXMC Meeting Schedule



\*Dates to be confirmed

# Next Steps



Provide Draft 2024 Annual Churchman's Crossing Monitoring Report to Monitoring Committee for review in late winter



Office Hours for questions/comments in early spring

# Questions?



# THANK YOU!



(302) 737-6205 Ext. 121



[dblevins@wilmapco.org](mailto:dblevins@wilmapco.org)



[Wilmapco.org/churchmans/](http://Wilmapco.org/churchmans/)

A large teal speech bubble with a smaller grey one behind it. The text 'Public Comments' is centered inside the teal bubble.

Public  
Comments