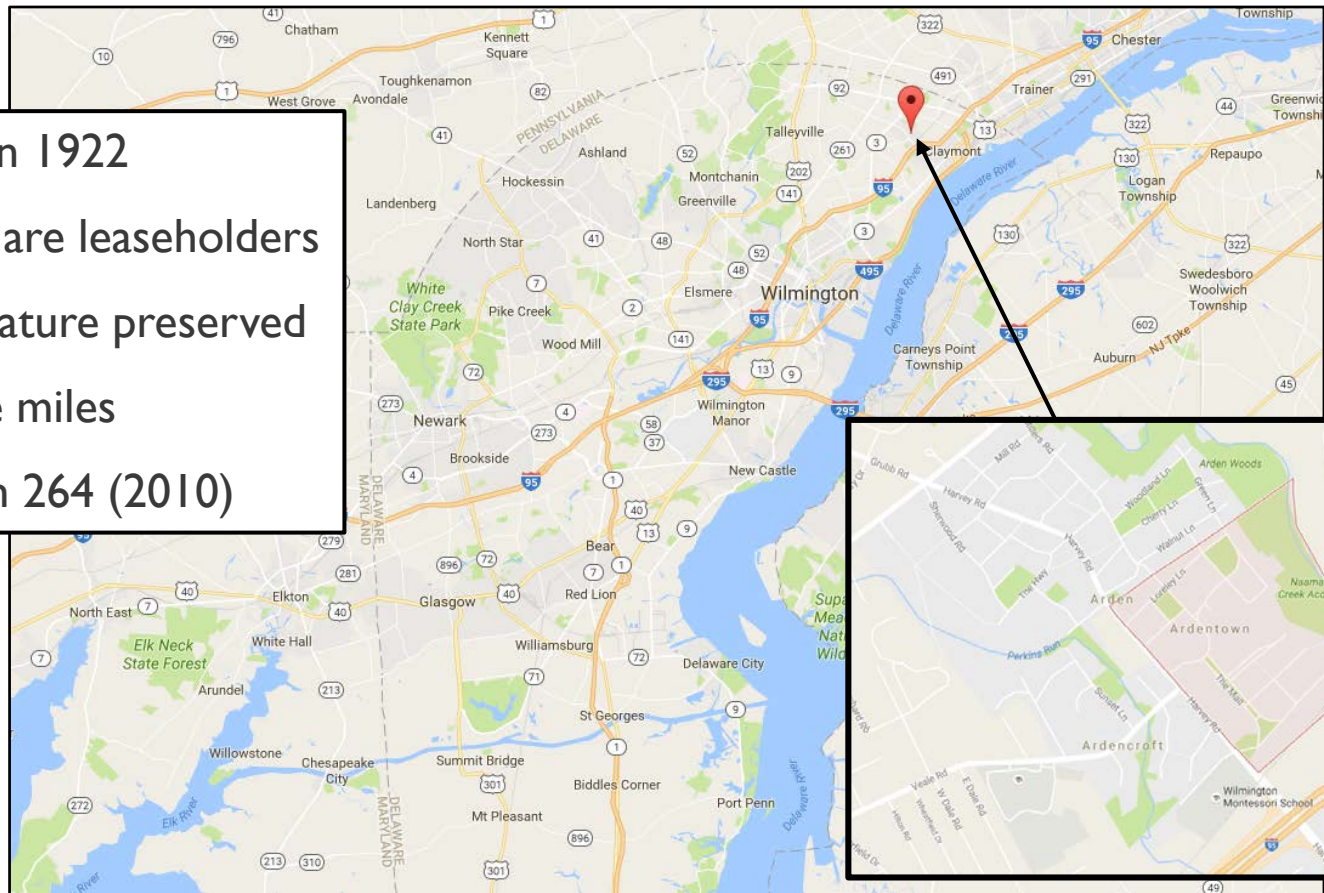


Ardentown Paths Plan

Nonmotorized Transportation
Working Group Meeting
December 6, 2016

Location and History

- Founded in 1922
- Residents are leaseholders
- Historic nature preserved
- 0.2 square miles
- Population 264 (2010)



Steering Committee

- 10 members
- Ardentown residents
(including Ardentown Planning Committee members)
- WILMAPCO staff
- State and County representatives



2013 Ardentown Paths Report

- 2013 – Village of Ardentown Planning Committee developed “Report and Recommendations from the Planning Committee Regarding Village Paths”
- Identified paths and unofficial path names, assessed conditions
- Functional and recreational paths
- Some paths are impassable or indistinguishable
- Recommendations

Ardentown Path Plan

Google earth



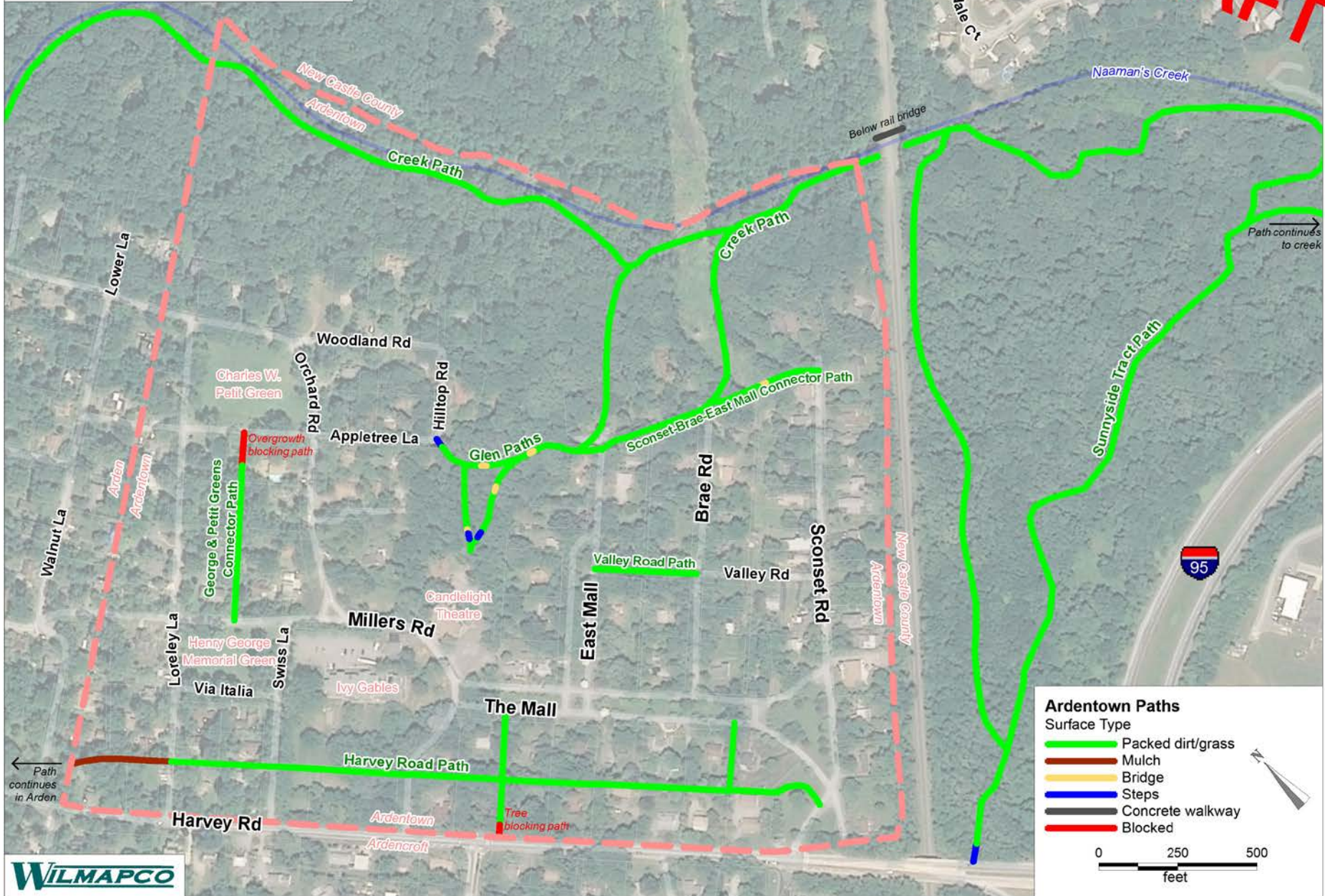
Project Scope

- Review of previous work – Completed
- GIS inventory of Ardentown's existing paths – Completed
- First public workshop – Completed
- Research best practices – Completed
- Outreach at the town meeting and online – Completed
- Review of feedback from outreach – In progress
- Steering committee develops draft recommendations – In progress
- Second public workshop (February)
- Summary of prioritized recommendations, final maps, and identification of funding sources

Ardentown Paths Plan

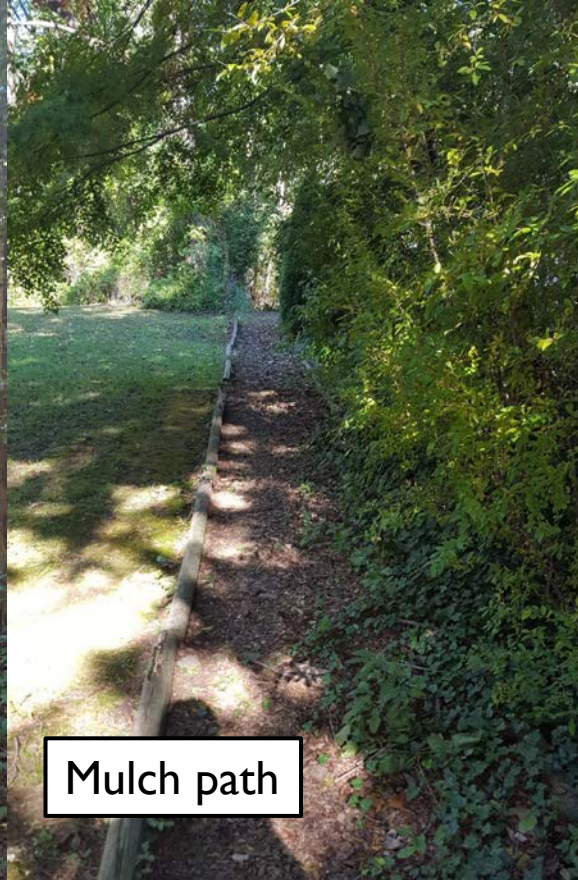
Existing Conditions, October 2016

DRAFT





Paths between
leaseholds



Mulch path



Steps



Bridges



“Invisible” paths



Signage

First Public Workshop

- Town Meeting, Monday, November 14th
- About 25 attendees
- 22 surveys completed
- Very positive response



Public Survey

- Online and on paper
- Residency, familiarity with paths
- Path usage
- Suggestions for improvement
- Paving, safety, lighting
- Naming and signage
- Additional thoughts

<http://www.surveymonkey.com/r/ardentown>

A screenshot of the online survey introduction page. The title is "Ardentown Paths Plan". The text explains the purpose of the survey: to identify, preserve, and enhance the network of paths in Ardentown, Delaware. It mentions that the plan is being developed by a committee of Town officials, residents, County and State officials, and WILMAPCO staff. It asks respondents to share their thoughts and vision for Ardentown's paths. A link is provided for more information and updates: <https://www.facebook.com/ardentownpathplan/>. The first question is "1. Are you an Ardentown resident?" with radio button options for "Yes" and "No". A "Next" button is visible at the bottom right. The SurveyMonkey logo and tagline "Powered by SurveyMonkey. See how easy it is to create a survey." are at the bottom.

A screenshot of the survey questions. The title is "Ardentown Paths Plan Public Survey" with the date "November 2016" and a link <http://www.wilmapco.org/ardentown>. The text repeats the purpose of the survey. The questions are as follows:
1. Are you an Ardentown resident?
[] Yes [] No
a. Does your leasehold border a path?
[] Yes [] No
2. Are you familiar with Ardentown's paths, which include walking paths between leaseholds and destinations as well as trails through the woods?
[] Yes [] No
a. If yes, how often do you use the paths?
[] Often [] Sometimes [] Rarely [] Never
b. If yes, where do you travel on the paths? List destinations.
c. If you don't use the paths, please tell us why.
3. If Ardentown had a more complete/improved path network, would you be more physically active?
[] Yes [] No [] Not sure
4. What improvements do you suggest to Ardentown's paths? (Examples include filling a gap in the network, clearing vegetation, or different surfacing. Please be specific.)
5. Are there new paths or pedestrian/bicycle connections you would like to see within Ardentown or nearby? (Examples include a new path between two roads, a safer pedestrian street crossing, or a bicycle/pedestrian connection to a nearby destination. Please be specific.)

Public Survey Results (65 responses total)

- 92% familiar with paths; 85% use paths “often” or “sometimes”
- Recreation emphasized more than transportation
- Most common suggestion: clearing paths
 - Filling in gaps, Harvey Road safety improvements, marking or signing paths
- Most prefer natural paths, signage, no lighting
- 74% not concerned about personal safety
 - Safety concerns include crime and tripping hazards
- Additional thoughts: the roads are safe for bicycling; better access to woods needed; safe connections to Wilmington Montessori School and Ardencroft

Recommendations

- Keep paths cleared, based on priority
- Name and sign paths
- Consider the opening of historic paths
- Improve crossing at Sconset Road
- Improve crossings at Millers and Veale Roads
- Improve access to Sunnyside Tract
 - From steps at Harvey Road entrance
 - Creek crossing under railroad bridge



Project Schedule

Phase	Schedule
Base data collection and analysis	Oct-Dec 2016
Study feedback from public outreach	Nov 2016-March 2017
Develop draft recommendations	January 2017
Complete study	Feb-April 2017
Final endorsement from Town	April 2017
Present study to WILMAPCO Council	May 2017

Ardentown Paths Plan

Questions?