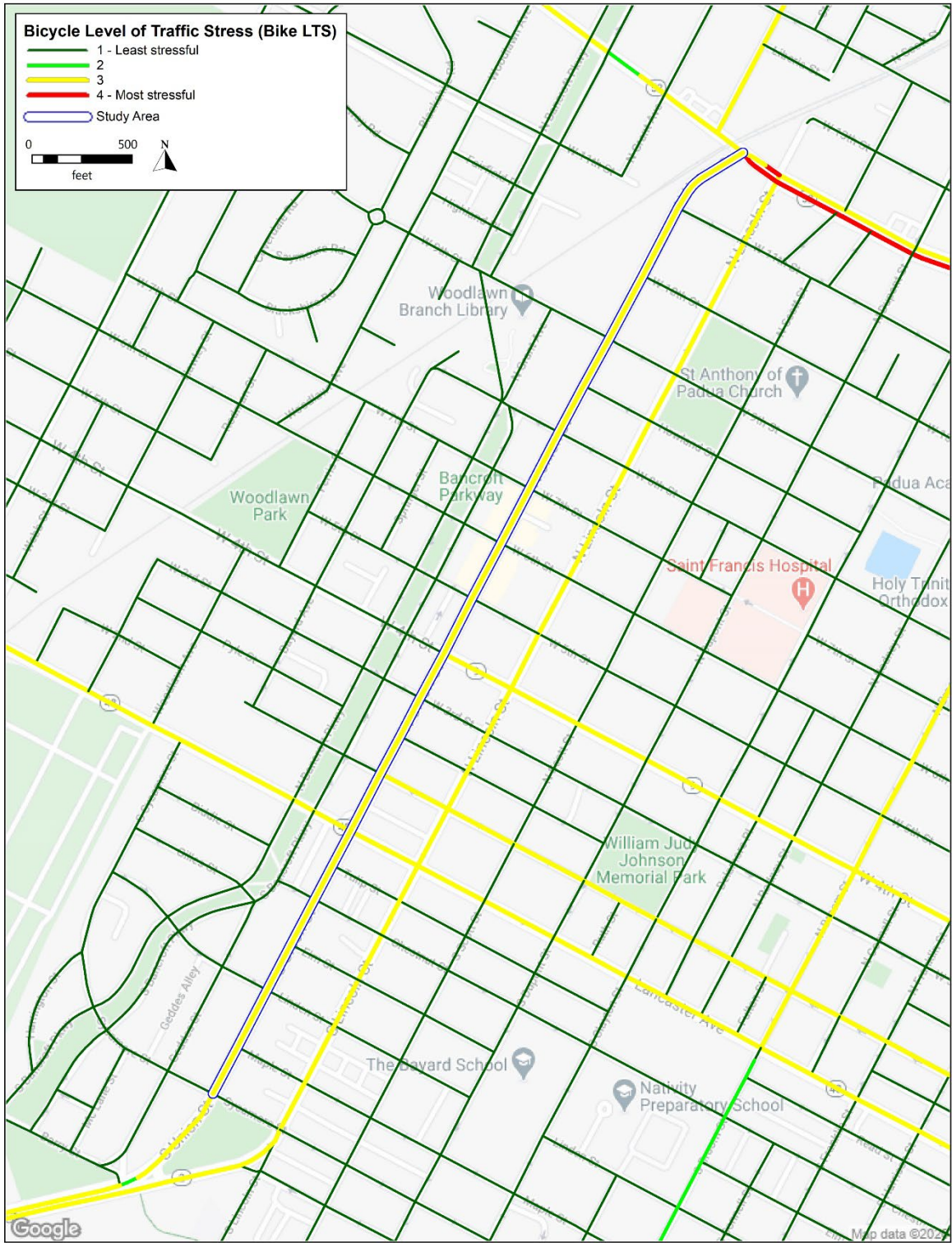
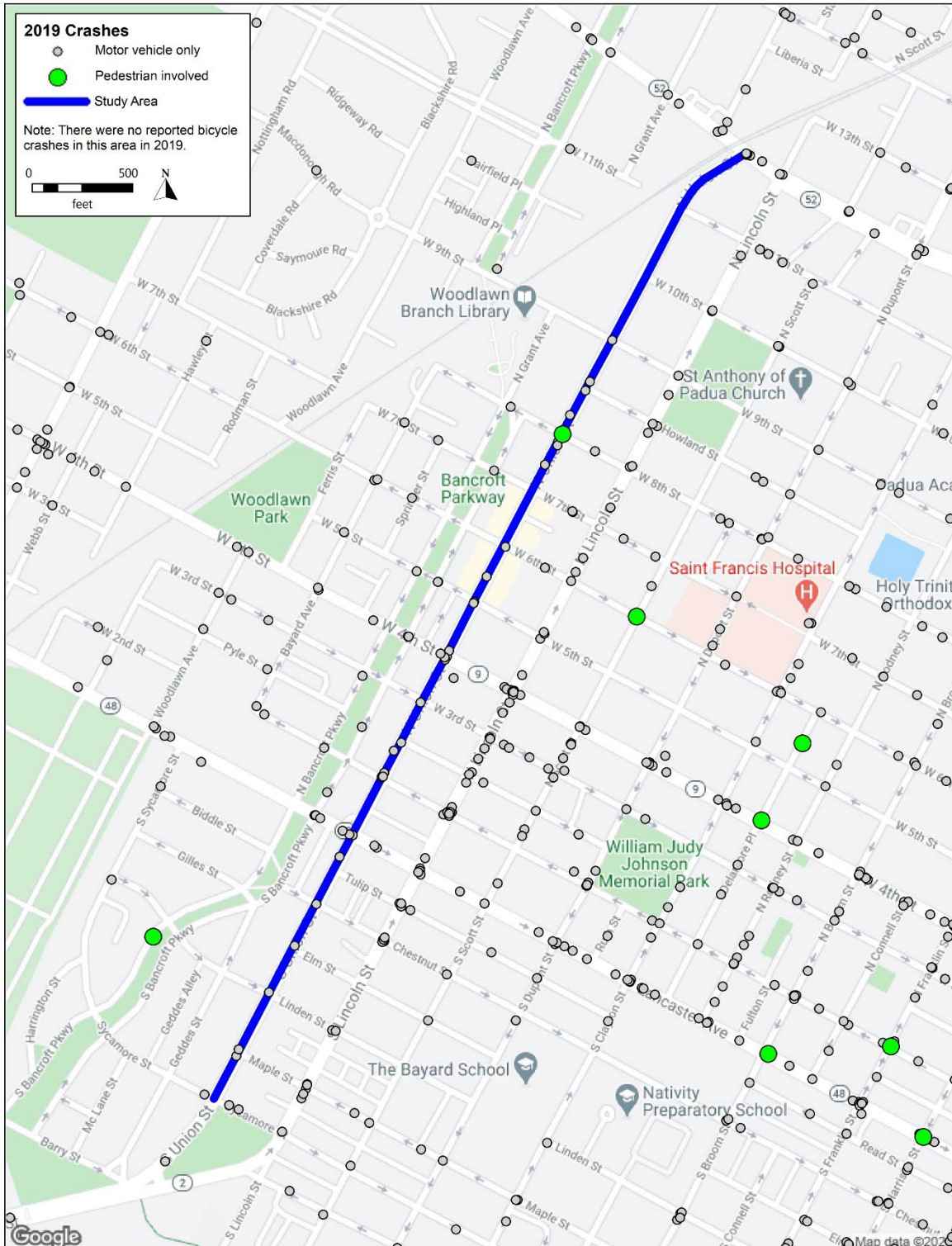
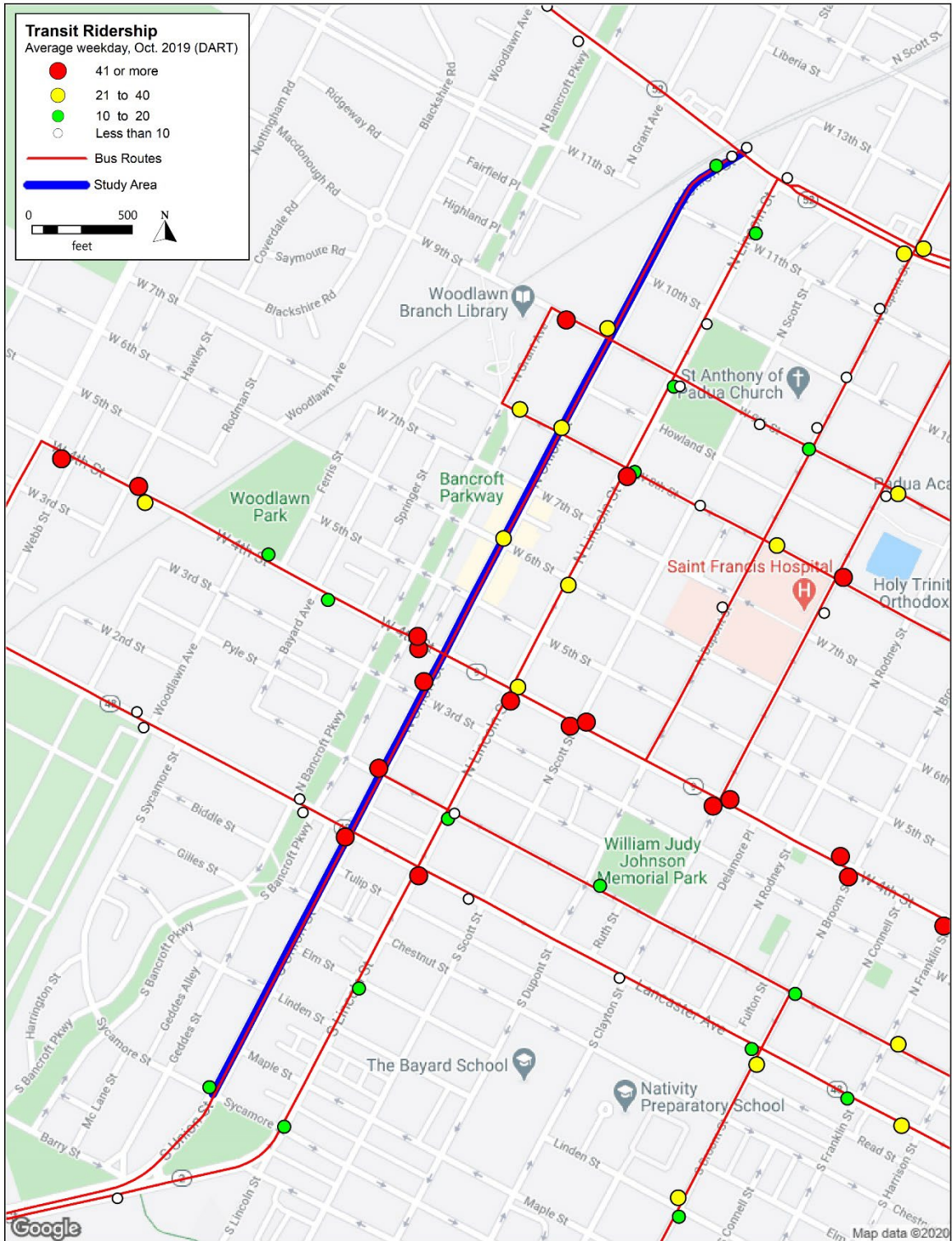


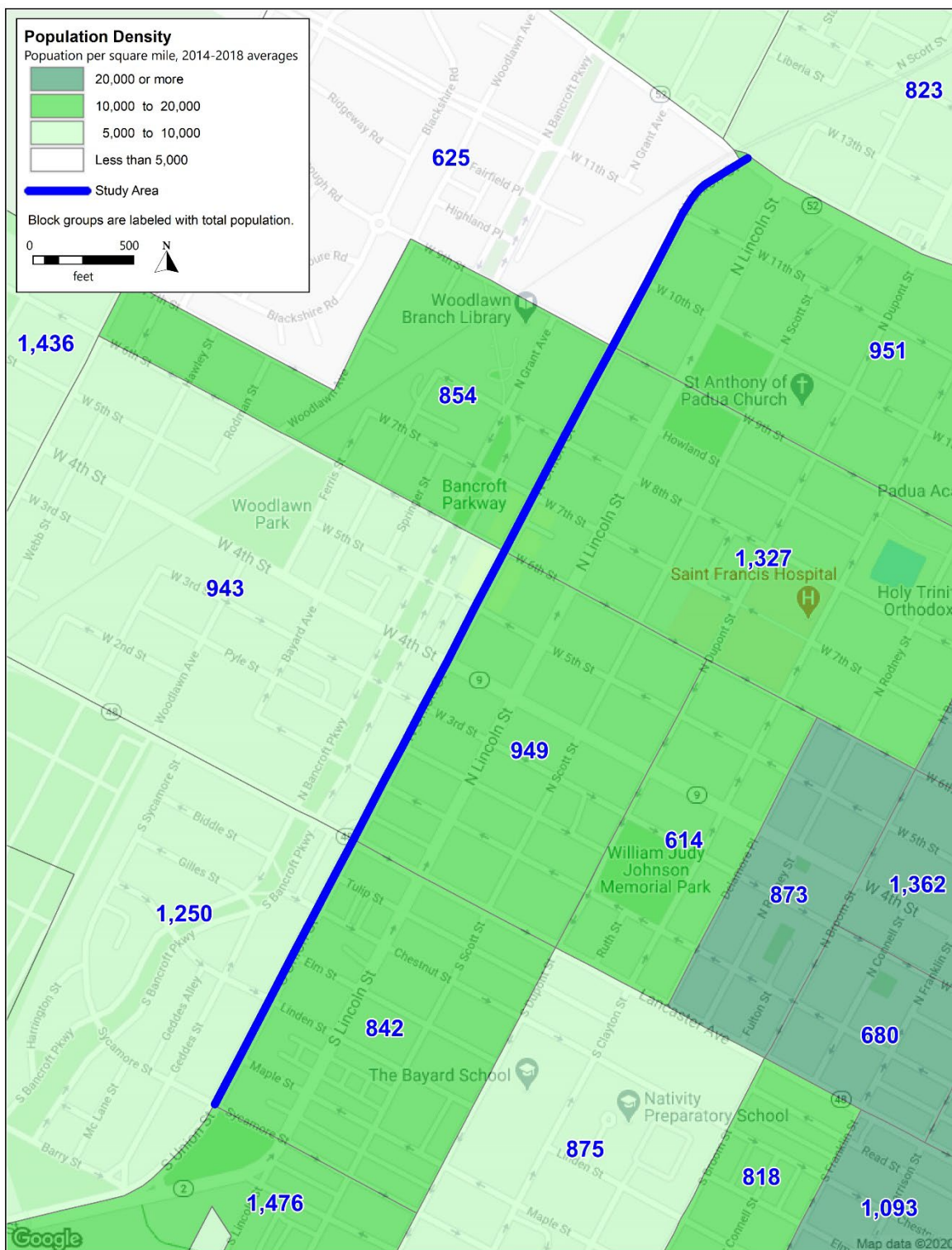
Appendix A: Existing Conditions







2. Population Summary



Socioeconomic Data Summary

Socioeconomic data for the project area were pulled using census tract-level data. The most recent data were used for each socioeconomic indicator. The project limits touch census tracts 12, 13, 14, 23, 24, and 25 in New Castle County, Delaware (Figure 1).

The project is located along Union Street in Wilmington, Delaware, just west of downtown. The project limits include the right of way of Union Street from Pennsylvania Avenue to Sycamore Street. The data pulled include general population, demographics, environmental justice, limited English proficiency, and access to personal vehicle data.

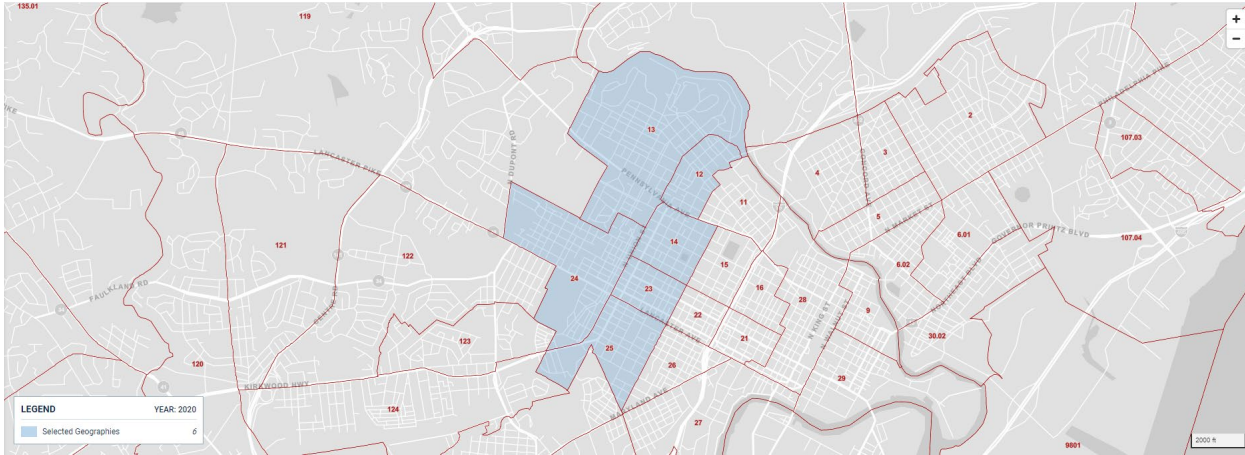


Figure 1: Census Tracts 12, 13, 14, 23, 24, and 25 in New Castle County, Delaware from <https://data.census.gov/cedsci/map?vintage=2020>

Overview

The census blocks surrounding the Union Street study include several Environmental Justice populations. Just over 50% of the population are people of color, 19% live under the poverty line, 10% have not completed high school, and 12% do not have access to a personal vehicle. Most residents speak English well (95%), but of those who do not, almost all of them speak Spanish as a first language (91%).

General Population, Economics, and Housing Data

These data were pulled from the 2020 census and 2019 American Community Survey (ACS) 5-year estimates for census tracts 12, 13, 14, 23, 24, and 25. The data include values and ranges of values for information such as the median age, median household income, number of persons per household, occupation of housing units, and percentage of population born outside of the United States:

- The median age ranges from 31.6 years old in Census Tract 12 to 50.5 years old in Census Tract 13 (S0101).
- The median household income ranges from \$31,892 in Census Tract 23 to \$106,701 in Census Tract 13 (S1901).
- The average household size ranges from 2.11 in Census Tract 13 to 2.50 in Census Tract 25 (S1101).
- 89.2% of households are occupied (H1).
- 6.1% of the population was born outside of the United States (B05002).

Environmental Justice (EJ) Community Status

These data were pulled mainly from the 2019 American Community Survey (ACS) 5-year estimates for census tracts 12, 13, 14, 23, 24, and 25 and include information such as the percentage of the population who are people of color, below poverty level, limited English-speaking, or who have less than a high school education:

- 50.8% of the population is a person of color (P2).
- 18.8% of the population is below poverty level (S1701).
- 2.1% of households are limited English-speaking households (S1602).
- 9.5% of population 25 years and over with less than a high school education (S1501).

Limited English Proficiency (LEP)

These data were pulled from the 2019 American Community Survey (ACS) 5-year estimates, Table S1601, for census tracts 12, 13, 14, 23, 24, and 25. These data indicate that 4.7% of adults have limited English proficiency (LEP), that is, who speak English less than “very well.” Of those adults with LEP, 91.3% speak Spanish and 8.7% speak other languages.

Personal Vehicle Access

These data were pulled from the 2019 American Community Survey (ACS) 5-year estimates, Table S2504, for census tracts 12, 13, 14, 23, 24, and 25. These data indicate that 11.9% of households have no access to a personal vehicle.

Schools

There are no schools located along Union Street in the project area.

Places of Worship

There are two places of worship directly along this stretch of Union Street: the Neighborhood Church, which meets at Union and Howland, and Epiphany Church Wilmington, which meets at Union and 3rd.

3. DNREC Hazardous Materials

Hazardous Material Sites Along Union Street							
Site Name	Site Type	Program/Site ID	LUST Project Name	LUST Project Number	LUST Project Status	Substance	Program
Former Hessler Building	Underground Storage Tank	3-001126	N/A	N/A	N/A	N/A	N/A
Union Park Pontiac	Underground Storage Tank	3-001537	N/A	N/A	N/A	N/A	N/A
M Fierro & Sons Inc	Underground Storage Tank	3-000956	N/A	N/A	N/A	N/A	N/A
1010-1020 N. Union St	Underground Storage Tank	3-003309	N/A	N/A	N/A	N/A	N/A
Merkel	Underground Storage Tank	3-001548	N/A	N/A	N/A	N/A	N/A
Woodlawn Trustees	Underground Storage Tank	3-002485	N/A	N/A	N/A	N/A	N/A
Former Lamplugh Gulf Station	Underground Storage Tank	3-000351	N/A	N/A	N/A	N/A	N/A
Post House Restaurant	Underground Storage Tank	3-002598	N/A	N/A	N/A	N/A	N/A
Logues Mobil Wilmington	Underground Storage Tank	3-000904	N/A	N/A	N/A	N/A	N/A
Union Park Pontiac	Leaky Underground Storage Tank	3-001537	UNION PARK SERVICE CENTER	N9711188	Inactive	Unknown	N/A
Union Park Pontiac	Leaky Underground Storage Tank	3-001537	UNION PARK PONTIAC, EMPTY LOT	N9501001	Inactive	Diesel, Gasoline	N/A
M Fierro & Sons Inc	Leaky Underground Storage Tank	3-000956	FIERRO AND SONS, INC.	N9911228	Inactive	Gasoline, Heating Fuel #2	N/A
1010-1020 N. Union St	Leaky Underground Storage Tank	3-003309	1010-1020 N. Union Street	N1902020	Inactive	Gasoline	N/A
Merkel	Leaky Underground Storage Tank	3-001548	MERKEL	N9501004	Inactive	Gasoline	N/A
Merkel	Leaky Underground Storage Tank	3-001548	PARKWAY GRAVEL	N9602032	Inactive	Gasoline	N/A

Woodlawn Trustees	Leaky Underground Storage Tank	3-002485	Woodlawn Trustees, 305 North Union St	N0905039	Inactive	Heating Oil	N/A
Former Lamplugh Gulf Station	Leaky Underground Storage Tank	3-000351	EXXON SECOND & UNION	N8407013	Inactive	Gasoline, Kerosene	N/A
Former Lamplugh Gulf Station	Leaky Underground Storage Tank	3-000351	DELAWARE AUTO GROUP	N9810186	Inactive	Used Oil	N/A
Post House Restaurant	Leaky Underground Storage Tank	3-002598	Post House Restaurant	N1212104	Inactive	Heating Fuel #2	N/A
Logues Mobil Wilmington	Leaky Underground Storage Tank	3-000904	LOGUES MOBIL	N9710170	Inactive	Gasoline, MTBE	N/A
KFC/Taco Bell Wilmington	Leaky Underground Storage Tank	9-000163	KFC/Taco Bell Wilmington-Phase II	N1212101	Inactive	Diesel, Gasoline, Other	N/A
Union Park Pontiac Inc	Solid and Hazardous Waste	DER000002261	N/A	N/A	N/A	N/A	Hazardous Waste Generator
Seymours Cleaners	Solid and Hazardous Waste	DED057131500	N/A	N/A	N/A	N/A	Hazardous Waste Generator

Information from DNREC NavMap

(<https://dnrec.maps.arcgis.com/apps/webappviewer/index.html?id=573d0ba17dd04c0eb2d7a8f15f74f5d4>)

accessed on February 3, 2022.

