

KEEP ME GREEN!
 WILMAPCO
 www.wilmapco.org
 Phone (302)737-6205 - Fax (302)737-9584
 Toll Free from Cecil County (888)808-7088

Keep Green

KEEP ME GREEN!
 WILMAPCO
 www.wilmapco.org
 Phone (302)737-6205 - Fax (302)737-9584
 Toll Free from Cecil County (888)808-7088

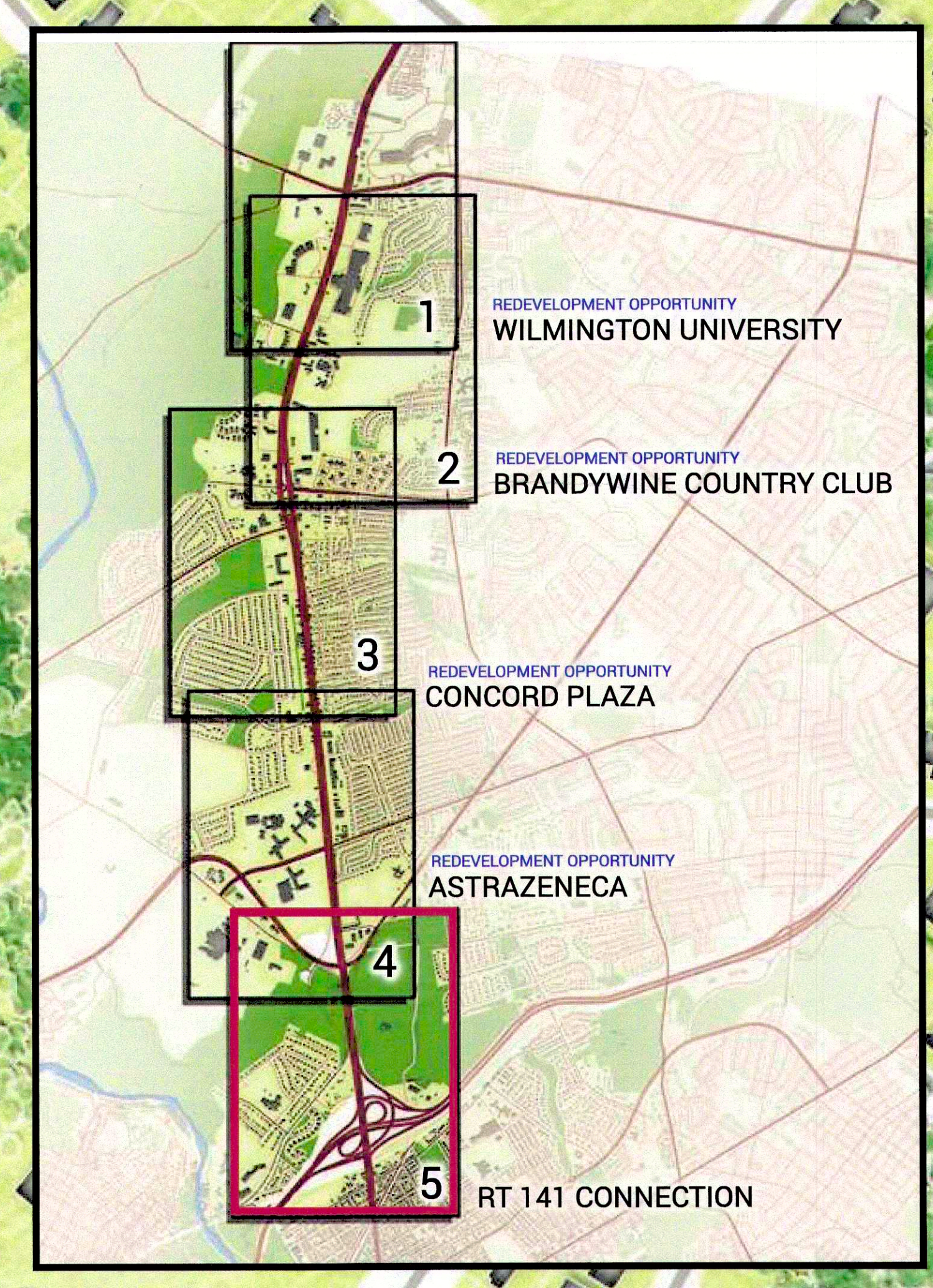
Don't destroy more open space! (along a crowded route)

WILMAPCO
 www.wilmapco.org
 Phone (302)737-6205 - Fax (302)737-9584
 Toll Free from Cecil County (888)808-7088

If you are doing a proposal for utility and water lines, please plan to reserve the green space as well as traffic capacity as well as space for future expansion of WDC operations? - DC 11/21/17

please send hardcopy
 NF Davis
 7 Swallow Hill
 Wilmington, DE 19807

WILMAPCO
 www.wilmapco.org
 Phone (302)737-6205 - Fax (302)737-9584
 Toll Free from Cecil County (888)808-7088



KEY

- BUILDINGS
- PARKS / OPEN SPACE
- PLANNED REDEVELOPMENT

REDEVELOPMENT OPPORTUNITIES: RT 141 CONNECTION

