

WELCOME TO THE CONCORD PIKE MONITORING COMMITTEE MEETING!

THE MEETING WILL BEGIN AT 5:00 PM

NOVEMBER 30, 2022



FALL 2022 CONCORD PIKE MONITORING COMMITTEE MEETING

NOVEMBER 30, 2022



AGENDA

- Introductions
- Concord Pike Monitoring Committee Overview
- Committee Meetings Recap
- Agency Updates
- Active Items Report
- Next Steps/Work Plan
- Public Comment



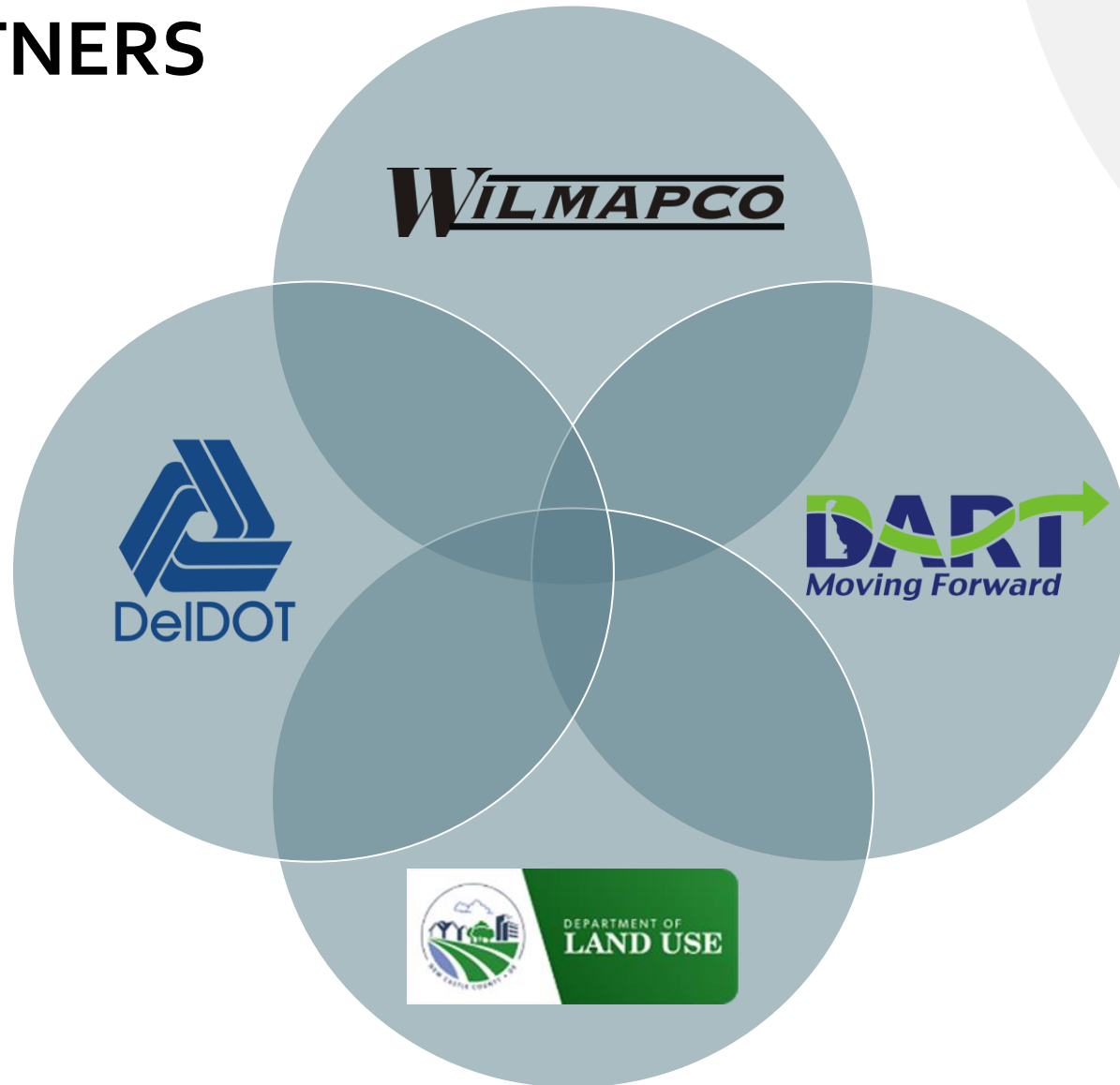
This meeting is
being recorded



INTRODUCTIONS



PROJECT PARTNERS



MEMBERS

Civic, Business, Special Interest, Institutions

- Bike DE: James Wilson
- Brandywine Conservancy: Grant DeCosta
- Civic League for NCC: Nancy Willing
- CCOBH: R.J. Miles
- Committee of 100: Elizabeth Keller
- Delaware Greenways: Mary Roth
- Delaware Office of State Planning Coordination: Tricia Arndt
- Delaware State Police: Capt. Mark Windsor and Lt. Lance Skinner
- New Castle County Chamber of Commerce: Alysse Bortolotto
- Woodlawn Trustees: Richard Przywara

Project Partners

- WILMAPCO – Dan Blevins
- DelDOT – Peter Haag and Cooper Bowers
- NCC – Matt Rogers
- DTC – Cathy Smith

State/County Elected Officials

- New Castle County Council
 - District 2 - Dee Durham
- State Elected officials
 - State Senate District 1 – Sarah McBride
 - State Senate District 4 – Laura Sturgeon
 - State Senate District 5 – Kyle Evans Gay
 - State Representative District 1 – Nnamdi Chukwuocha
 - State Representative District 6 – Debra Heffernan
 - State Representative District 10 – Sean Matthews
 - State Representative District 12 – Krista Griffith

Project Team

- RK&K – Mark Tudor, Jim Burnett, Stephanie Everett, Kim Troiani, Katie Gibson
- Kramer & Associates – Andrew Bing

INTRODUCTIONS



Name



Organization



Why this is important

CONCORD PIKE MONITORING COMMITTEE OVERVIEW



PURPOSE OF THE MONITORING COMMITTEE

- Guide and fulfill the recommendations of the Concord Pike Master Plan
- A collaborative dialogue between the Committee members which represent a diverse group of stakeholders
 - Implementing agencies
 - Elected Officials
 - State Police
 - Civic and community leaders
 - Business Interests
 - Advocacy Groups

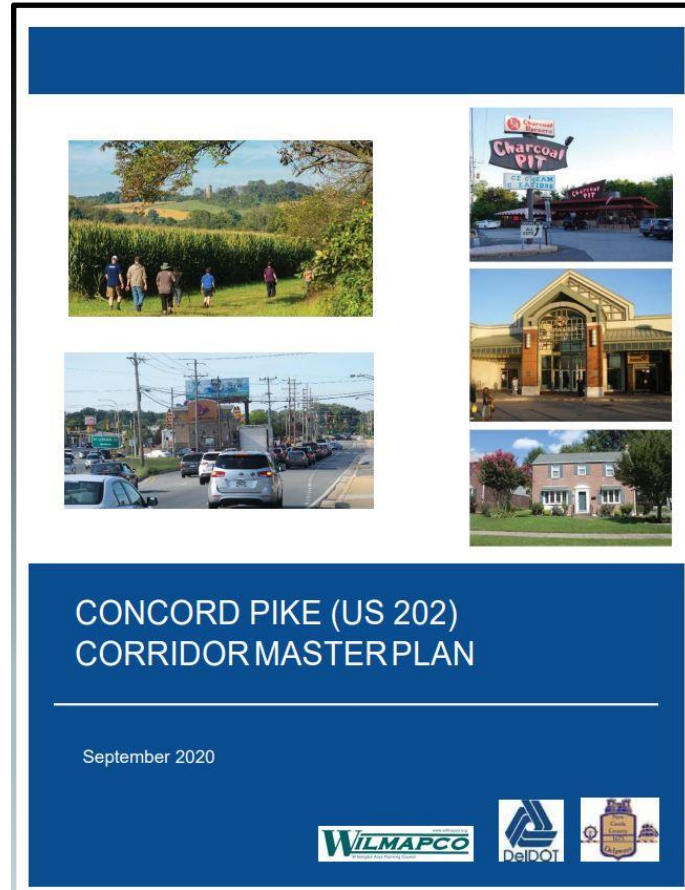
ROLE OF THE MONITORING COMMITTEE

- Facilitate regular communications between decision makers, community stakeholders and the traveling public on progress in plan implementation
- Share key technical information to help the community understand the consequences/benefits of investment decisions across transportation assets or modes
- Provide input on local transportation priorities
- Provide input on the prioritization of plan projects, in particular bike/ped improvements
- Provide input on small mid-course corrections as conditions evolve over time
- Help to facilitate solutions to traffic management problems as they arise

EXPECTATIONS OF THE MONITORING COMMITTEE

- Attend up to three (3) in-person meetings per calendar year
- Active participation at meetings
- Serve as a liaison between the Committee and the individuals/groups that you represent (if any)
- Encourage the public to attend the annual public workshop

CONCORD PIKE (US 202), CORRIDOR MASTER PLAN



www.wilmapco.org/202-2/

CONCORD PIKE MASTER PLAN

- Transportation recommendations found in Appendix A
 - 177 specific transportation recommendations
 - 130 Bike/Ped
 - 13 Bike Lanes
 - 9 Transit
 - 25 Roadway
- Interactive map found on project website
 - <https://mangomap.com/wilmapco/maps/104202/draft-202-project-list-transportation#>

RECOMMENDATIONS: LAND USE

- Establish guiding principles
 - Develop identity and gateways
 - Encourage responsible infill development
 - Create a mix of uses
 - Add recreational amenities
- Zoning
 - Context sensitive commercial redevelopment
 - Neighborhood preservation
 - Historic overlay district
- Interactive map found on project website
 - <https://mangomap.com/wilmapco/maps/106744/us-202-land-use-recommendations#>

COMMITTEE MEETINGS RECAP



COMMITTEE MEETINGS RECAP:

- CPMC Priorities/Focus Areas
- 2022 Update to the NCC Comprehensive Plan
- Bicycle Network Modeling
- Monitoring Annual Report
- Project Tracking Matrix

CPMC PRIORITIES/ FOCUS AREAS

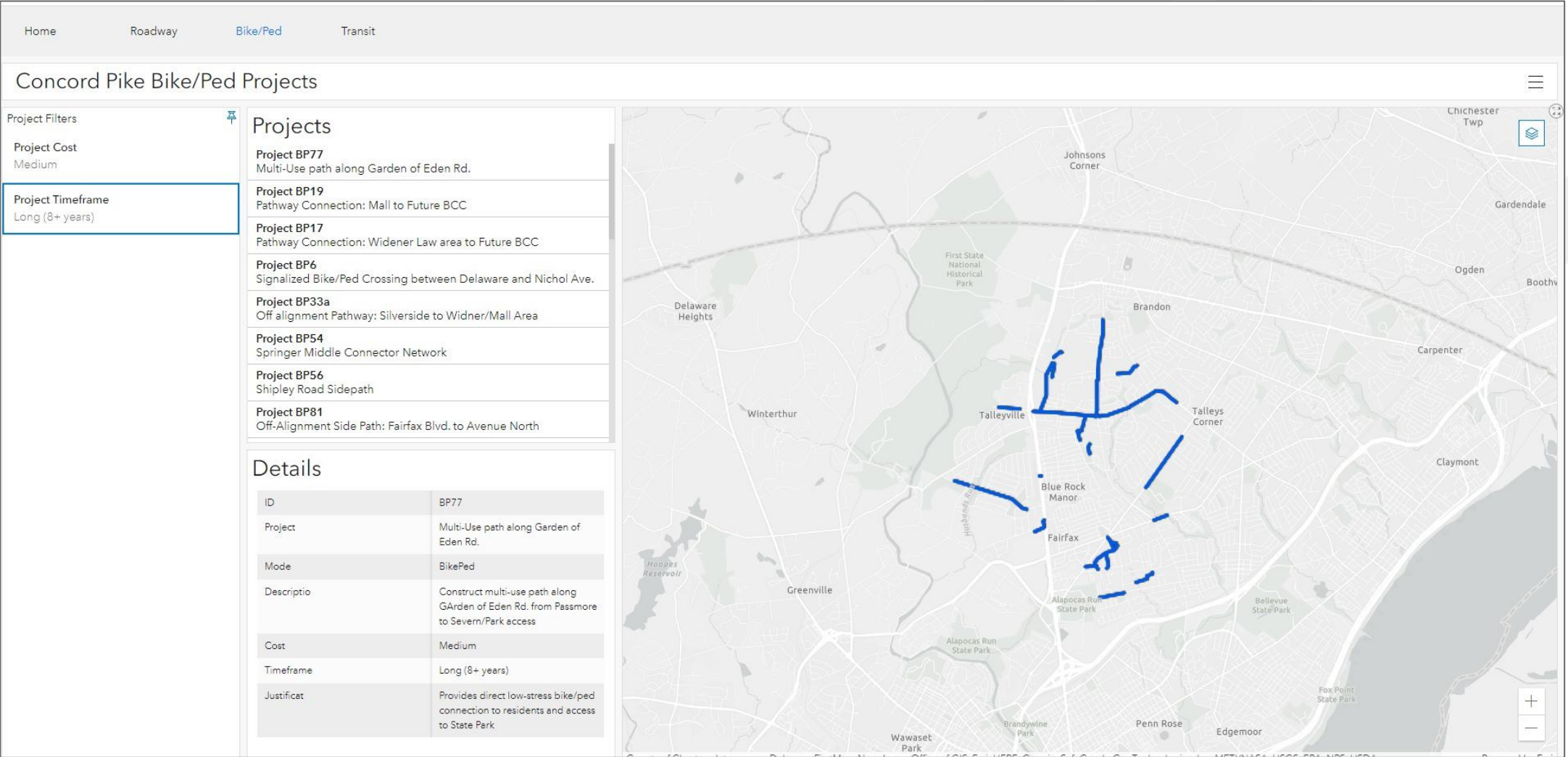
- Bike-Pedestrian Connectivity
- Intersection Improvements (Silerside Rd., Mt. Lebanon Rd.)
- Pedestrian Safety
- Signal Coordination
- Wayfinding Signage
- Corridor Aesthetics (strip malls/neighborhood entrances)
- Cut through in Neighborhoods
- Land use Design
- Transit Service



MONITORING ANNUAL REPORT

- There will be an annual Monitoring Report developed for the Committee's review in Winter 2023
- The annual Monitoring Report, will include updates of key metrics/trends along the corridor such as:
 - Land development
 - Traffic
 - Highway safety
 - Transit service
 - Project Implementation status
 - Effectiveness of completed projects
 - Regional factors impacting corridor

PROJECT TRACKING MATRIX



AGENCY UPDATES

- WILMAPCO
- DelDOT
- Delaware Transit Corporation
- NCC Department of Land Use



TRANSPORTATION PLANNING/FUNDING



Regional Transportation Plan (RTP)

- 30 year plan - fiscally constrained and aspirational projects
- Updated at least every 4 years
- Includes NCC, DE and Cecil County, MD



Capital Transportation Program (CTP)

- 6 year fiscally constrained program
- Updated every 2 years
- Encompasses all of Delaware



Transportation Improvement Program (TIP)

- 4 year fiscally constrained program
- Updated every 4 years, revised annually
- Includes NCC, DE and Cecil County, MD

THE REGIONAL TRANSPORTATION PLAN (RTP)

- Our principal plan
 - **Strategic Policy:** goals, objectives, actions
 - **Major transportation projects:** constrained and aspirational
- Updated every four years (since 1996)
- Update due March 2023



RTP: STRATEGIC POLICY

GOAL: IMPROVE QUALITY OF LIFE

- Safer transportation
- Promote social equity
- Fund transportation choices
- Protect environment
- Support disaster & ***national defense preparedness***

GOAL: SUPPORT SUSTAINABLE ECONOMIC DEVELOPMENT & GOODS MOVEMENT

- Use prioritization process
- Create/support local plans
- Manage traffic congestion
- Streamline freight
- ***Ensure public accessibility of unique data***
- Support a greener transportation system (***new PM: VMT target***)

GOAL: EFFICIENTLY TRANSPORT PEOPLE

- Improve bus performance
- Plan for autonomous and connected vehicles
- Fund preservation first (***new PM: preservation target spending***)
- Robust public participation

SCHEDULE – KEY TASKS

- Review of Progress Report & Public Opinion Survey
- Develop draft goals, objectives, actions
- Agency/Civic/Municipal outreach ← **We are HERE**
- Develop project lists
- Air quality conformity
- Public Outreach
- Document Refinement
- Adoption

June 2022

January - March

March 2023

FINANCIAL OUTLOOK

(\$ in 000s)		2023-2028	2029-2039	2040-2050	TOTAL
Funding	State Funds	3,780,966	7,728,677	8,869,294	20,378,937
	Cash/Carry-Over	734,955	452,706	520,000	1,707,661
	Federal Funds	1,845,000	2,420,000	2,420,000	6,685,000
	Bond Proceeds	275,000	300,000	225,000	800,000
	TOTAL	6,635,921	10,901,383	12,034,294	29,571,598

RTP: FINANCIAL OUTLOOK

(\$ in 000s)		2023-2028	2029-2039	2040-2050	TOTAL
Funding	State Funds	3,780,966	7,728,677	8,869,294	20,378,937
	Cash/Carry-Over	734,955	452,706	520,000	1,707,661
	Federal Funds	1,845,000	2,420,000	2,420,000	6,685,000
	Bond Proceeds	275,000	300,000	225,000	800,000
	TOTAL	6,635,921	10,901,383	12,034,294	29,571,598
Expenses	GARVEE Payback	109,951	145,732	-	255,683
	Debt Service	500,157	692,449	585,991	1,778,598
	Operations	1,924,003	4,516,868	5,926,522	12,367,394
	State of Good Repair	1,243,433	2,175,402	1,909,673	5,328,508
	TOTAL	3,777,545	7,530,451	8,422,187	19,730,183
Available for Capital Projects		2,858,376	3,370,932	3,612,107	9,841,415
New Castle County – 48%		1,372,021	1,618,047	1,733,811	4,723,879

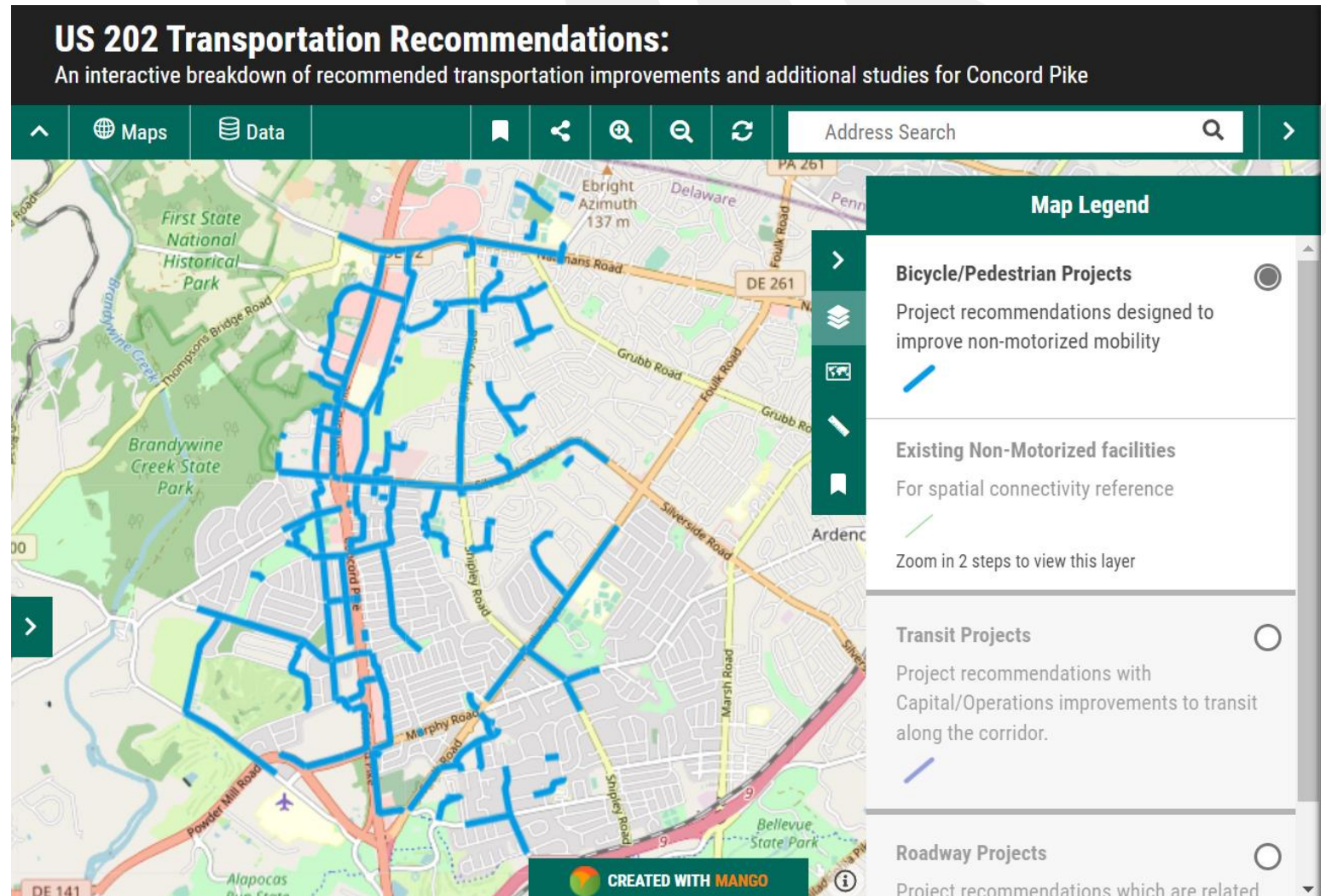
NOTE: Over \$6 billion in total projects in Draft RTP project list!

PROJECTS FOR FURTHER STUDY

- Further Impact Study: Reconfiguration of Silverside/Garden of Eden Rd.
- Explore impacts/benefits of constructing a multi-way from Beaver Valley Rd. to Rocky Run Blvd.
- Explore impacts/benefits of constructing a multi-way from Florence Dr. to Fairfax Dr.
- Explore impacts/benefits of constructing a multi-way from Murphy Rd. to Fairfax Dr.
- Explore options for transit connections between DE and PA: Additional Market Study Needed
- Explore limited stop bus service along US 202 between West Chester and Wilmington. Timeframe: Additional Study Needed

CONCORD PIKE AREA TRANSPORTATION PROJECTS

- These Bicycle and Pedestrian Projects currently are not funded in WILMAPCO's TIP and DeIDOT's CTP

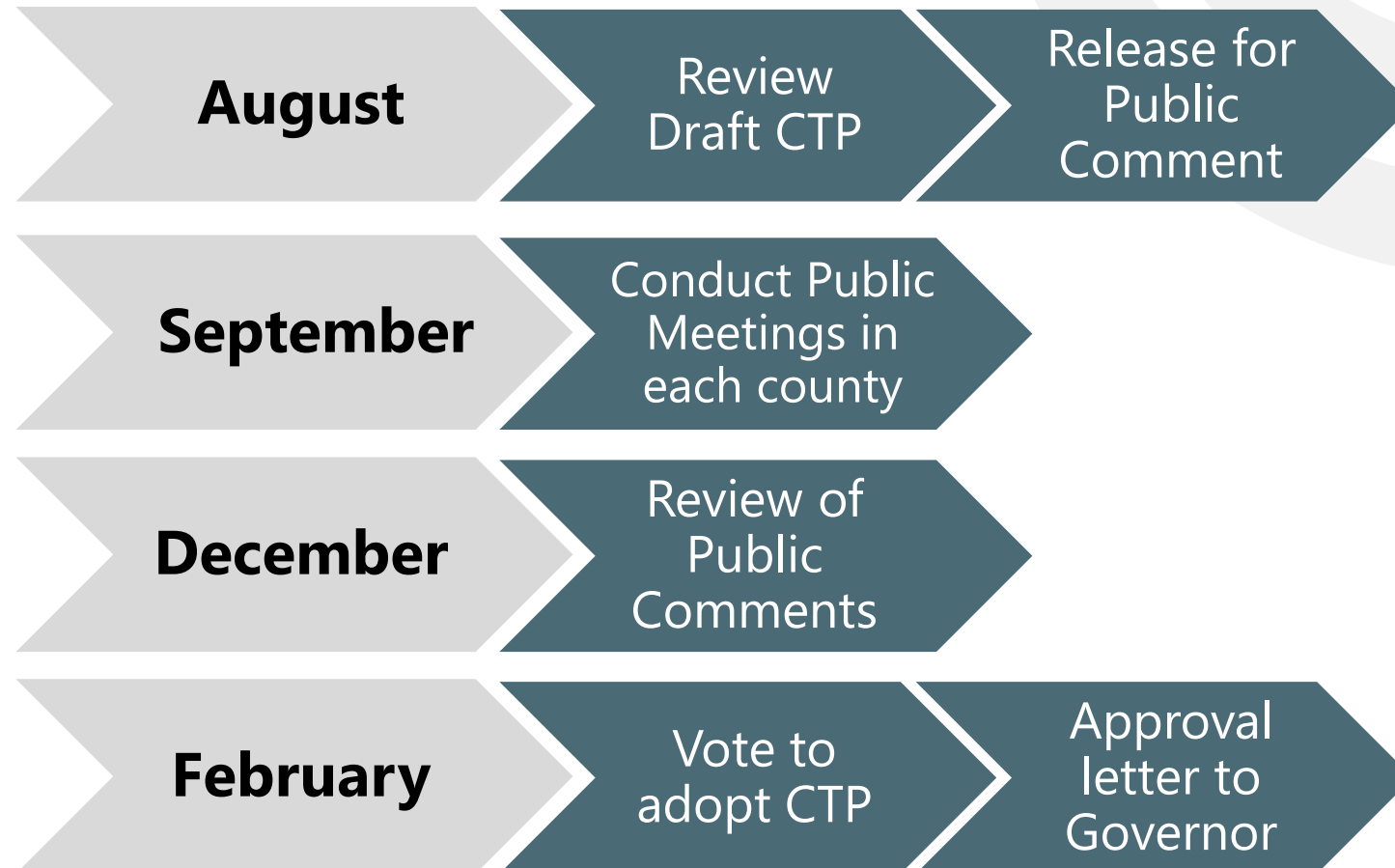


NEXT STEPS

- Continued public outreach and agency coordination
- Take the 2050 RTP survey – wilmapco.org/rtp
- Share on social media - [@wilmapco](https://twitter.com/wilmapco) and [#2050RTP](https://twitter.com/2050RTP)
- Attend Our Town Conference on **Feb 8**
- Public comment begins January 15
- Council adoption in March 2023

CTP PROCESS TIMELINE

CTP process occurs in even Fiscal Years – Upcoming in FY24



CTP INFORMATION



ABOUT ▾ CITIZEN ▾ BUSINESS ▾ SERVICES ▾ EMPLOYMENT ▾ CONTACTS ▾ TRANSLATE

DELAWARE DEPARTMENT OF TRANSPORTATION

Capital Transportation Program (CTP)

CTP Home



CTP Reports

- Current CTP
- Previous Reports

Planning Partners

- WILMAPCO
- Dover/Kent MPO
- Salisbury/Wicomico MPO
- Sussex County
- 2021 Non-Metropolitan Consultation Process Update
- Sussex County Long Range Transportation Plan

Resources

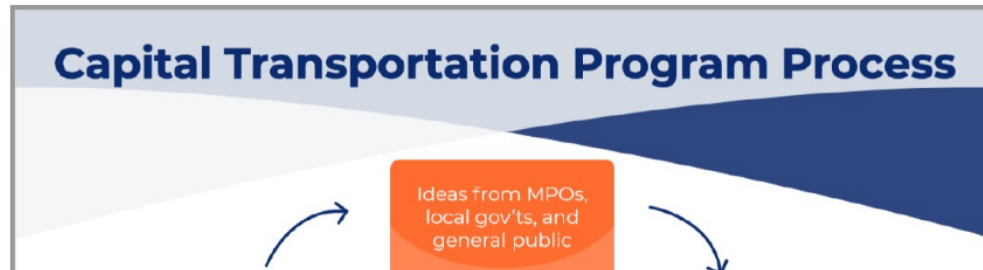
- CTP Development Process
- CTP Brochure | Spanish
- DelDOT Enhanced Project Prioritization Criteria Summary
- DelDOT Enhanced Project Prioritization Criteria

Capital Transportation Program Meetings

New Castle County Capital Transportation Program Public Meeting 9/15/2021

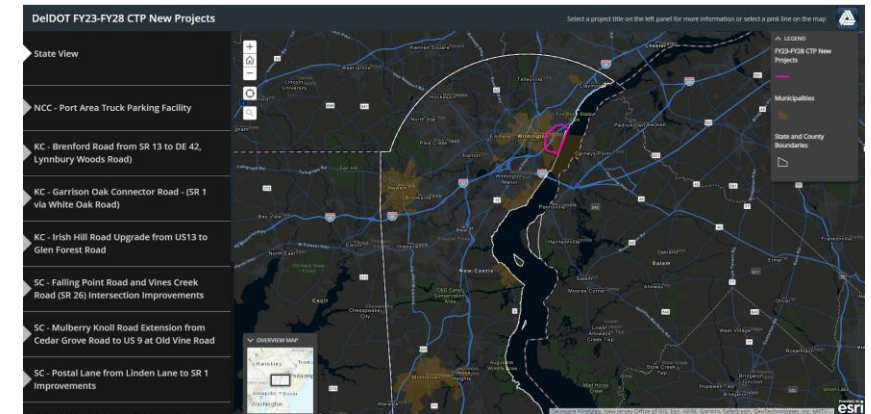
Development:

Every two years the Department of Transportation develops a 6-year Capital Transportation Program (CTP) that identifies anticipated capital investments. This program is developed in cooperation with the Wilmington Area Planning Council (WILMAPCO), Dover/Kent County Metropolitan Planning Organization, Salisbury-Wicomico Metropolitan Planning Organization, and Sussex County. The program provides information on various DelDOT capital and maintenance programs and on the estimated cost expenditures for the project phasing of a capital project that are anticipated in each specific fiscal year. The following documents provide a brief overview of the process and specific information about DelDOT's prioritization criteria.



Updated Website:
ctp.deldot.gov

Meeting Videos



New Interactive Map

CTP PRIORITIZATION CRITERIA

- Safety
- System Operating Effectiveness
- Multimodal/Mobility/Flexibility/Access
- Revenue/Economic Development/jobs and Commerce
- Impact on the Public/Social Disruption/Environmental Justice
- Environmental Impact/Stewardship
- State and Local Priority



DeIDOT

- Signing Inventory
- Pavement Marking Inventory



DeIDOT

Foulk Road Project Public Workshop (July 2022)

- 241 attendees
- 166 comments received
- Developing options to address the various concerns expressed
- Plan to reengage the community in early 2023
- <https://deldot.gov/projects/index.shtml?dc=details&projectNumber=T202304401>

DeIDOT

Other Projects in the Region:

- I-95 Restore the Corridor
 - <https://restorethecorridor.com/>



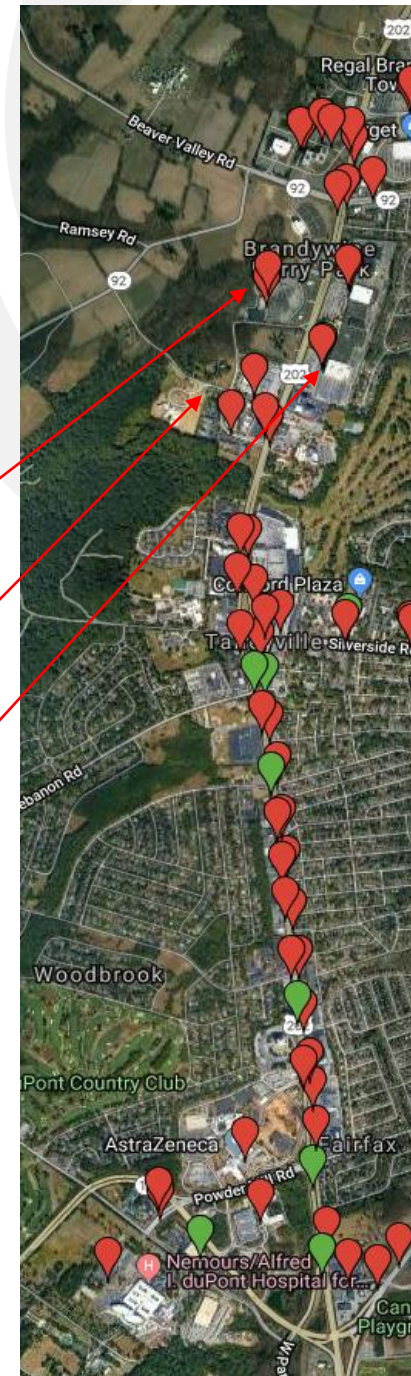
DART: SERVICE UPDATES

- Fixed Route Bus Ridership 80% pre-pandemic levels
- Concord Pike Area served by 4 Fixed Routes
 - Routes 2, 28, 35, and 61
- Total Ridership within Concord Pike Area: 587 ons and 602 offs per weekday



DART: SERVICE UPDATES 202 CORRIDOR

- (47) stops currently serve the Rt 202 corridor *I-95 to the Brandywine Town Center*
- (39) stops directly serve Rt 202
- (3) stops serve the Brandywine Commons II complex (Shop Rite, Burlington Coat Factory, etc...)
- (2) stops serve the Brandywine Commons I complex (Red Lobster, TGI Fridays, Kohls, etc..)
- (4) stops serve the Concord Mall



(North)
Brandywine
Town Center

47 Stops

I-95
(South)

DART: SERVICE UPDATES 202 CORRIDOR BUS STOPS

- (2) stops have more than the minimum 40 daily boarding's which would warrant a shelter install
 - Concord Mall @ Boscovs 77 ons
 - Brandywine Commons @ Shop Rite 62 ons
- (9) stops currently have a shelter installed
 - Opp. Independence Mall; at Murphy Road; Zeneca Bldg; Rollins Bldg; at Whitby Rd; at Mt. Lebanon Rd; Rocky Run Blvd; at Sears; and the Brandywine Town Center Park and Ride
- (1) stop is close to the minimum 20 daily boarding's and will be considered for a bench
 - Concord Pike @ Silverside Road 18 ons
- (4) stops are brand new stops (as of March 2022) that will be monitored through the May 2023 Service Change for potential amenity installs if the ridership is warranted
 - Rocky Run Parkway SB
 - Northern Concord Mall Entrance NB
 - Southern Concord Mall Entrance SB
 - Chubb NB

DTC BUS STOPS – 202 CORRIDOR

- (2) stops (pictured below) from the ridership chart have ridership that warrant a shelter based on DTC's Bus Stop Policy minimum of 40 daily boarding's
- Both locations currently have a large covered refuge from the elements and would not require a DTC bus shelter



(Concord Mall @ Boscov's – Stop ID 867)



(Brandywine Commons @ Shop Rite – Stop ID 69)

DART: SERVICE UPDATES

- DeIDOT Pave & Rehab project (T201601105) from Rocky Run Blvd and north to Brandywine Town Center have been completed
- All stops within the project have been re-constructed to meet ADA compliancy
- Currently, (31) out of (47) total stops have been improved to meet ADA compliancy along the Rt 202 Corridor
- The number of sheltered bus stop locations could increase from (8) to (11) depending on the ridership numbers of the (3) bus stops with shelter pads that were installed under the recent DeIDOT Pave & Rehab project
- Due to Right-of-Way constraints, there are areas along the Route 202 corridor that currently prevent DTC from constructing several of our bus stops to meet ADA compliancy (and/or install amenities) until a future DeIDOT project is able to acquire the Right-of-Way needed for DTC to continue our overall Bus Stop Improvement Plan

DART: SERVICE UPDATES

- DTC was recently contacted by the Brandywine Town Center for comments regarding their partial redevelopment
- DTC will continue to monitor the Route 202 corridor for changes in ridership as well as future DelDOT and developer projects so that we can obtain the Right-of-Way needed for future expansion and amenities
- 61 upcoming service change: May 2023
- Route 35 service change: May 2023

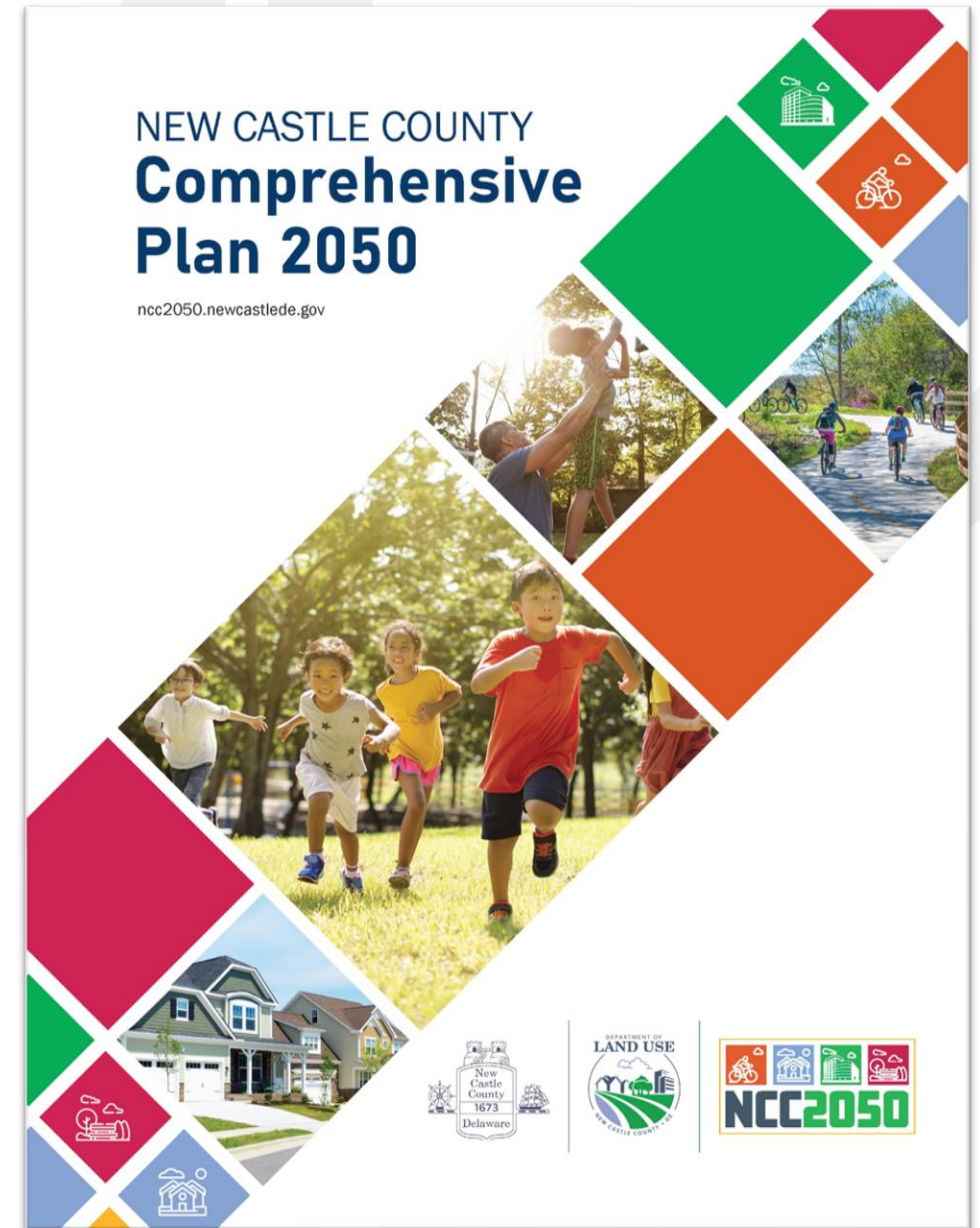
DART REIMAGINED

Reshaping DART Transit Services to Meet the Needs of Today... and Beyond

- Comprehensive Transit Study
- Iterative Public Process
- Recommendations/Implementing Plan
 - Routing
 - Service Types
 - Fleet Size
 - Infrastructure Improvements
- Consultant Announcement coming soon
 - Kick-Off Meeting Scheduled for November
 - Extensive Outreach through Spring 2023

NCC DEPARTMENT OF LAND USE

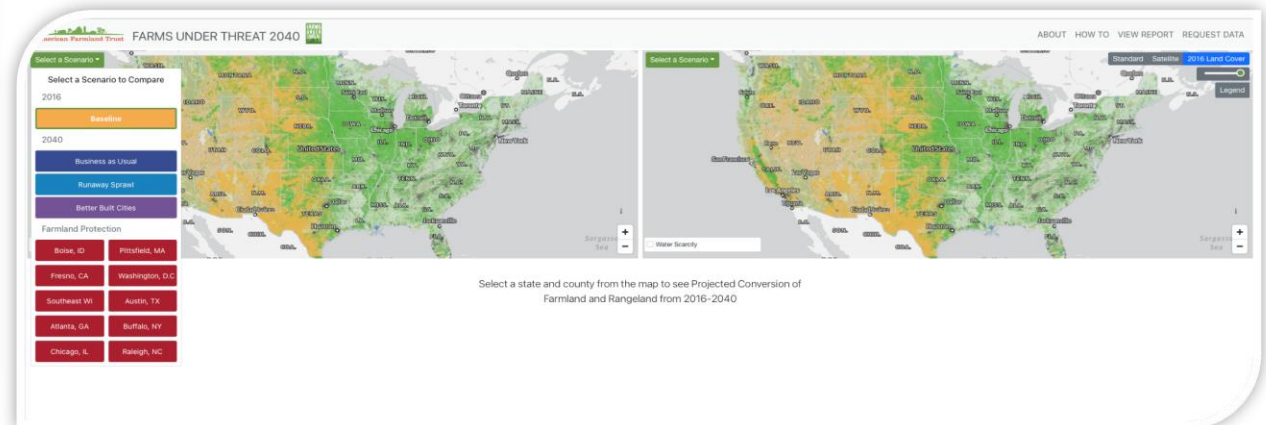
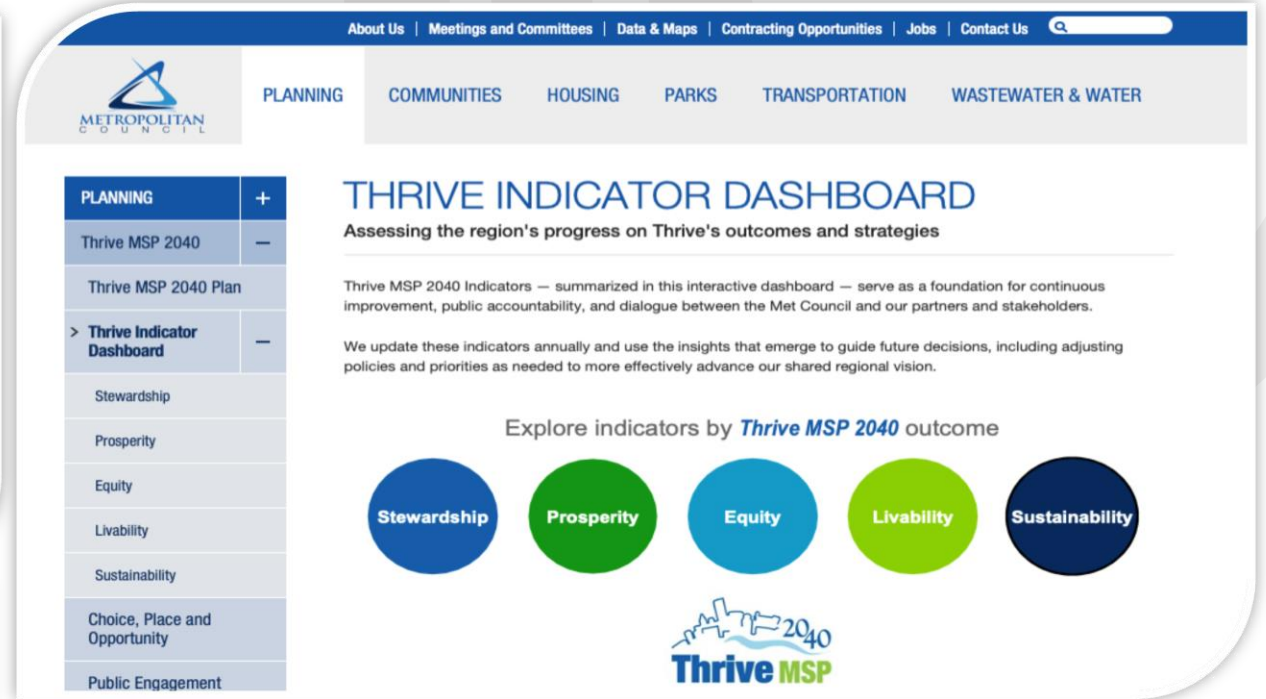
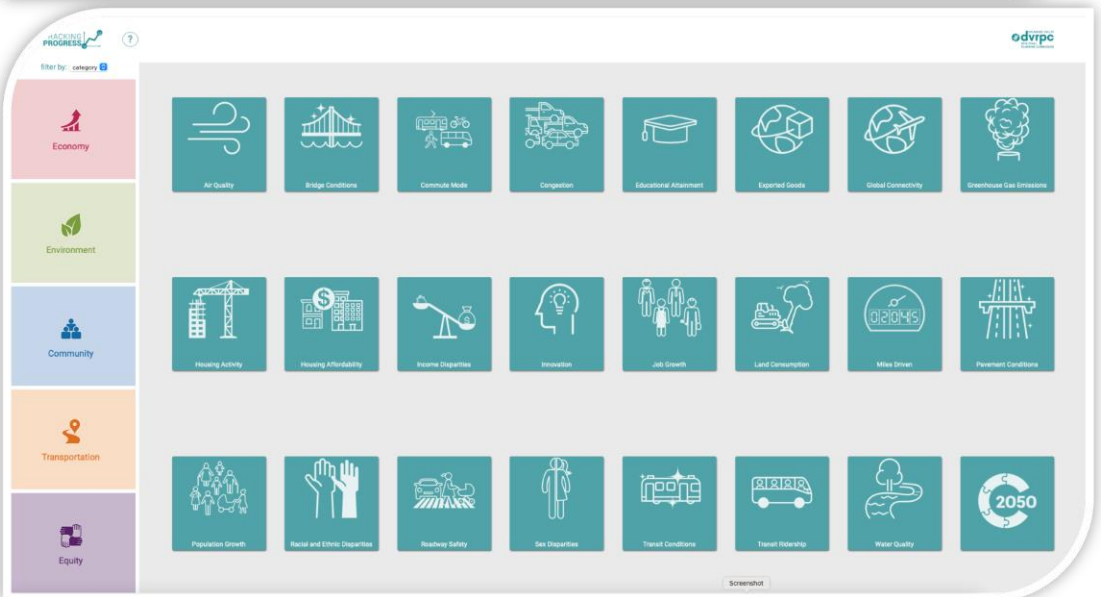
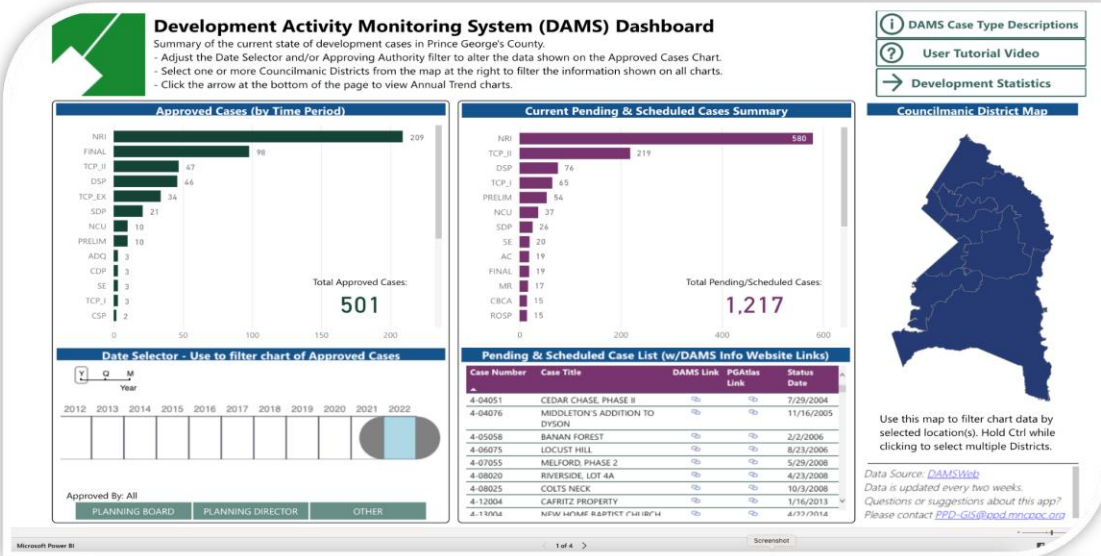
New Castle County Comprehensive Plan Status Update



WHAT'S THE STATUS OF NCC2050

- Adopted by County Council – July 26th
- Signed by the County Executive – August 4th
- Certified by Governor Carney

DASHBOARD/METRICS



NCC DEPARTMENT OF LAND USE

- Foulkstone Pathway – submitted Delaware Bicycle Council Grant Application
- *Ranked #1 Standalone Ped/Bike Project along the Concord Pike corridor (based on DelDOT Bicycle Mobility Tool analysis, presented by Paul Moser at May 11th CPMC Meeting)*



FOULKSTONE PATHWAY

- Rehabilitate and widen existing hotmix path alongside Foulkstone Plaza
- Improve access to signalized intersection at Foulk Rd
- Add pedestrian crossing signal on South side of intersection
- Widen sidewalks to Talley Day Park and Brandywine HS parking lot



ACTIVE ITEMS REPORT



ACTIVE ITEMS REPORT

Action Item	CPMC Date Identified	Status	Status / Notes	Lead
Left Turn Lane on Foulk Road at Simon Road	N/A	Opportunity presented as part of Foulk Road Workshop in July 2022	Workshop feedback still being evaluated	DeIDOT
Bus Stops along Concord Pike	05/2022	Meeting held November 14 th , 2022		DTC
US 202 Independence Mall Intersection	N/A	Meeting scheduled for December 5 th , 2022		DeIDOT

NEXT STEPS/ WORK PLAN



WORK PLAN

▶ Summer

■ Assemble available data from Project Partners:

- *Land Use Development updates*
- *Safety data*
- *Traffic data*
- *Transit data*

▶ Fall

■ Intersection counts at 15 locations

- *Perform Critical Movement Summation (CMS) Analysis*

■ Discuss Monitoring Committee priorities for CTP input with Project Partners

■ Update GIS database with latest data

We are here! ➔



Monitoring Committee Meeting #1

- *Workplan for Draft Report*
- *Capital project implementation/prioritization updates*
- *Additional agency updates*

Technical team efforts shown in **black**.

Deliverables shown in **green**.

Monitoring Committee Meetings & Public Workshops shown in **purple**.

WORK PLAN

▶ Winter

JANUARY

- Confirm data for inclusion in Draft Report
- Gather additional annual transportation data

FEBRUARY

- **Provide Draft Concord Pike Monitoring Report to Monitoring Committee**

▶ Spring

MARCH

- **Monitoring Committee Meeting #2**
 - **Review of Draft Report**
 - **Looking ahead discussion**
- Revise Draft Report per Monitoring Committee feedback

APRIL

- **Public Workshop**
- **Final Concord Pike Monitoring Report**

MAY

- **Monitoring Committee Meeting #3**
 - **Feedback from the April Public Workshop**
 - **Goals for the year ahead**

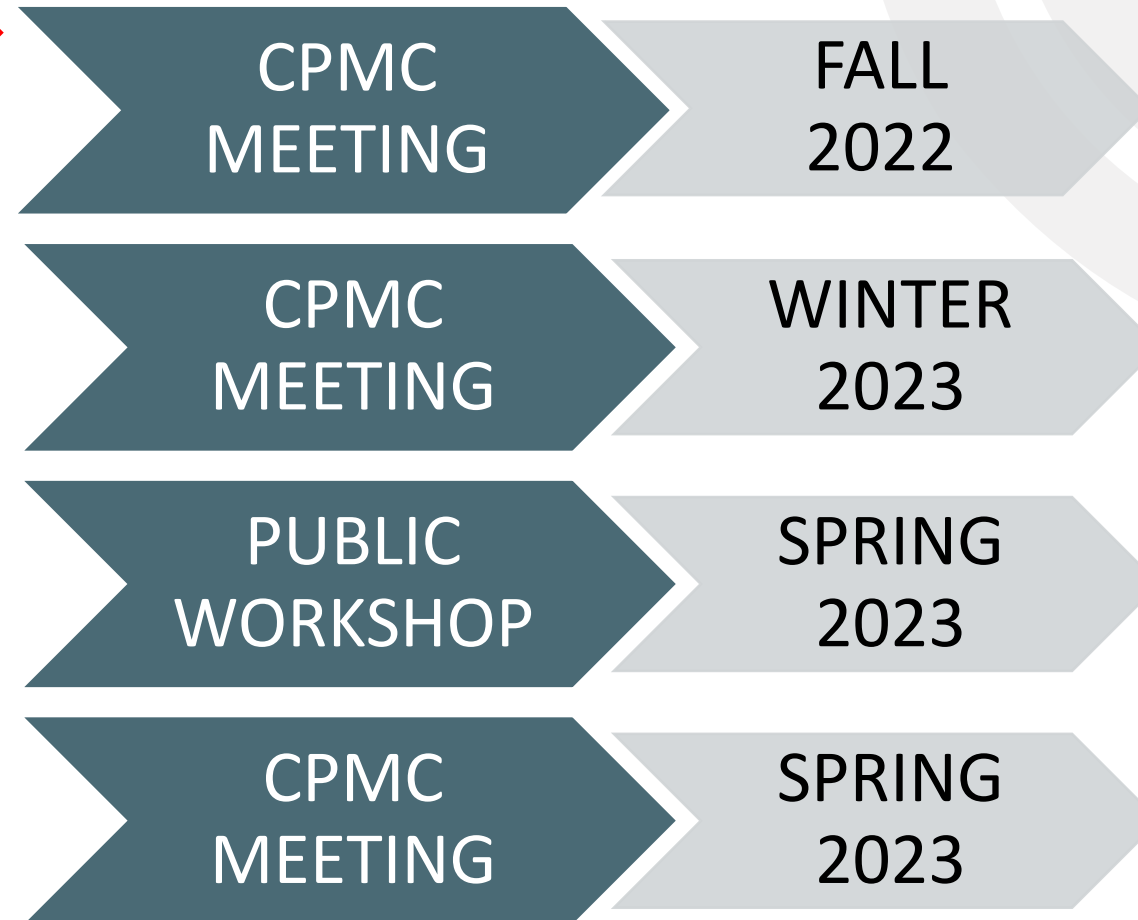
Technical team efforts shown in **black**.

Deliverables shown in **green**.

Monitoring Committee Meetings & Public Workshops shown in **purple**.

COMMITTEE MEETINGS

We are here! →





QUESTIONS?



Public
Comments

THANK YOU!



WILMAPCO.ORG/202-2