



Port of Wilmington, Delaware

Presents to

WILMAPCO - Special Committee to Study Traffic on SR 41/SR48/SR7

August 9, 2017



Port of Wilmington

- Supply chain logistics
 - ❑ Truck centric
 - ❑ Overnight access to 1/3 of US & Canadian consumers
 - ❑ Central mid-Atlantic location with immediate access to interstate highway system
 - ❑ Efficient major regional distribution center



Port of Wilmington

- Truck stats
 - FY increase
 - 5.6% FY 2017 vs. FY 2016
 - 10.1% FY 2015 vs. FY 2017
 - Seasonality – busiest December thru April
 - At 6% increase FY 2018: 186,438
 - Mix of containers; flatbeds; tankers; reefer/dry vans; and heavy duty & specialized trailers

	Gate Passes	Variance	Var. %
FY 2017	175,885	9,354	5.6%
FY 2016	166,531	6,787	4.2%
FY 2015	159,744		

	2016-17
	Gate Passes
July	11,809
August	12,680
September	12,067
October	12,556
November	12,583
December	14,434
January	17,090
February	16,502
March	19,313
April	17,383
May	14,299
June	15,169
	175,885

Potential Expansion Sites

- Existing Port
 - ❑ Potential additional berths and/or relocated berths
 - ❑ Potential changes to current operations
 - ❑ Gate capacity
 - ❑ Efficient highway access
 - ❑ Local trucking & POV impact
- Riveredge
 - ❑ Greenfield container terminal
- Former Boxwood GM plant
- Edgemoor
 - ❑ Port purchased 2/27/17
 - ❑ 112 acres
 - ❑ Outstanding Interstate & rail access
 - ❑ Container terminal

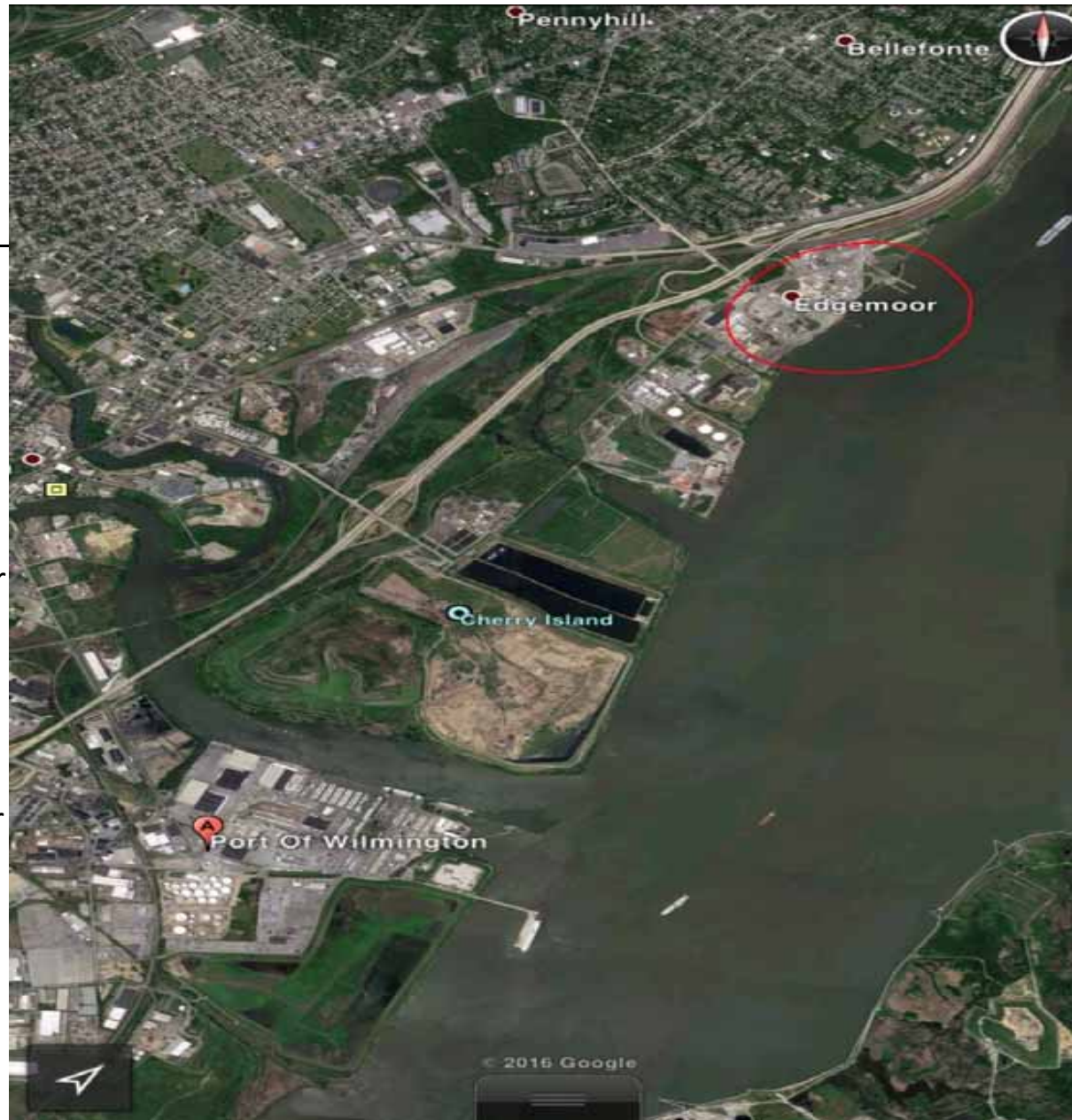


Potential Expansion Sites



Edgemoor Site

- Purchased by Port 2/27/17 for \$10m:
 - Intended as container terminal
 - RFQ/P3 process in play to ID investor/developer/operator
- Location:
 - 3 miles north – on the Delaware River
 - 20 mins steaming time from Port



Edgemoor Site





Edgemoor Site



Edgemoor Site

