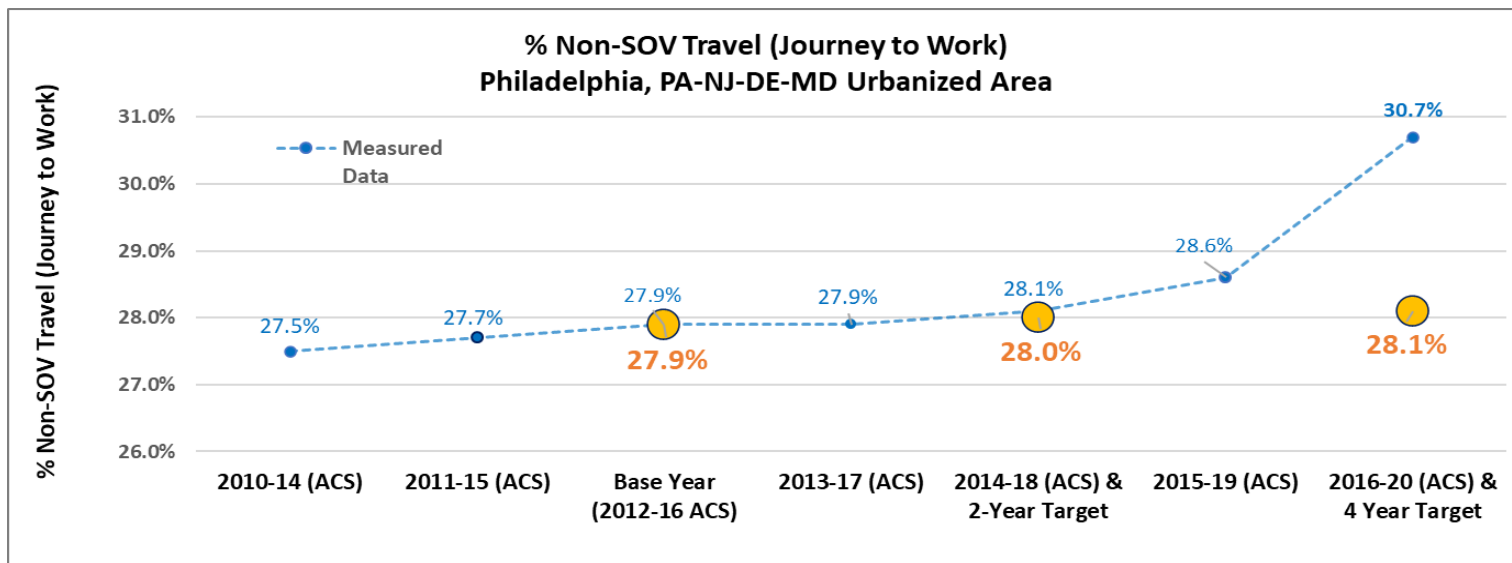
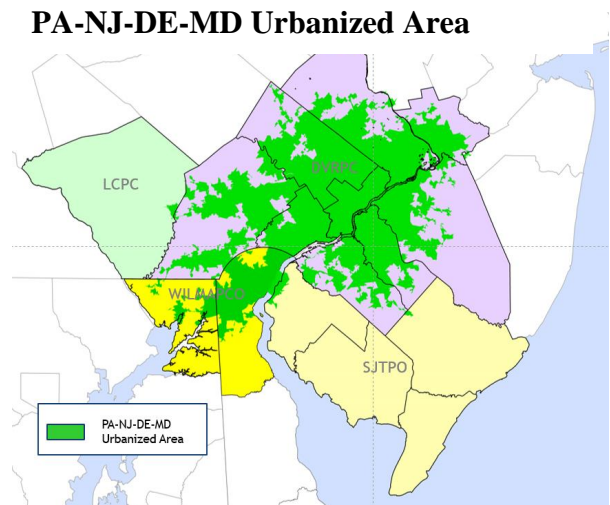


Transportation Performance Measure Period #1: Percent of non-single occupancy vehicle travel – Philadelphia, PA/DE/MJ/NJ Urbanized Area

Measure: Percentage of travel that is not occurring by driving alone in a motorized vehicle according to the American Community Survey or a local survey of travel mode. The intent is to calculate the amount of non-SOV travel in specific urbanized areas. This may include travel via carpool, van, public transportation, commuter rail, walking, or bicycling as well as telecommuting.

Data: The American Community Survey (ACS) Commuting (Journey to Work) data from the U.S. Census Bureau 5-year average (2012-2016) was used. The measure covers the entire Philadelphia, PA/DE/MJ/NJ urbanized area, with the targets selected in coordination with all four DOTs and associated MPOs.



Source: US Census American Community Survey