

Newport Transportation Study – Monitoring Committee Meeting #2

June 21, 2022

Welcome

Agenda

- ✓ Introductions
- ✓ Goals
- ✓ DeIDOT Project Updates
- ✓ Truck Traffic MacArthur Drive and Lindberg Avenue
- ✓ DTC Updates
- ✓ Train Station Updates
- ✓ New Castle County Updates
- ✓ Wilmington Bicycle Loop - Delaware Greenways
- ✓ Community Feedback/Discussion
- ✓ Next Steps

Monitoring Committee

Newport Advisory Committee		
Elected Officials: Name	District	Email
Spiros Mantzavinos	Senate District 7	Spiros.Mantzavinos@delaware.gov
John Walsh	Senate District 9	John.Walsh@delaware.gov
John L Mitchell	House District 13	John.L.Mitchell@delaware.gov
Kimberly Williams	House District 19	Kimberly.Williams@delaware.gov
Michelle Mac Donald	Mayor of Newport	mich.macdonald@gmail.com
Name	Company	Email
Richard Piendak	Advanced Pavement Group	r.piendak@apgc.com
Dave Tiberi	Emergency Response Protocol	dtiberi@ersafety.com
Tim Love	Sun Chemical	Timothy.Love@sunchemical.com
Patrick Oakes	APEX	poakes@apexpiping.com
J. Stevens	APEX	jstevens@apexpiping.com
Brian Kirtley	Sun Chemical	brian.kirtley@sunchemical.com
Greg Buckley	Buckley's Auto Care	greg.buckley2@gmail.com
William Keller	Air Liquide	william.keller@airliquide.com
Sarang Gadre	Air Liquide	Sarang.gadre@airliquide.com
Vince Ruff	Community	vinceruff47@gmail.com
Wendy King	Newport Town Manager	wendyking99@yahoo.com
Chief Wohner	Newport Chief of Police	mark.wohner@cj.state.de.us
Mike Spencer	Town Commissioner/Vice Mayor	mikespencer100@comcast.net
Cooper Bowers	DelDOT	Cooper.Bowers@delaware.gov
Peter Haag	DelDOT	Peter.Haag@delaware.gov
John Sisson	DTC	john.sisson@state.de.us
Tricia Arndt	DE Office of State Planning	Tricia.Arndt@delaware.gov
Thomas Harvey	Harvey Hanna	ETHarvey@harveyhanna.com
Bill Lower	Harvey Hanna	wlower@harveyhanna.com
Matt Rogers	New Castle County Land Use	Matthew.Rogers@newcastlede.gov
Alyse Bortolotto	New Castle County Chamber of Commerce	bortolottoa@ncccc.com

Goals

Newport Transportation Study

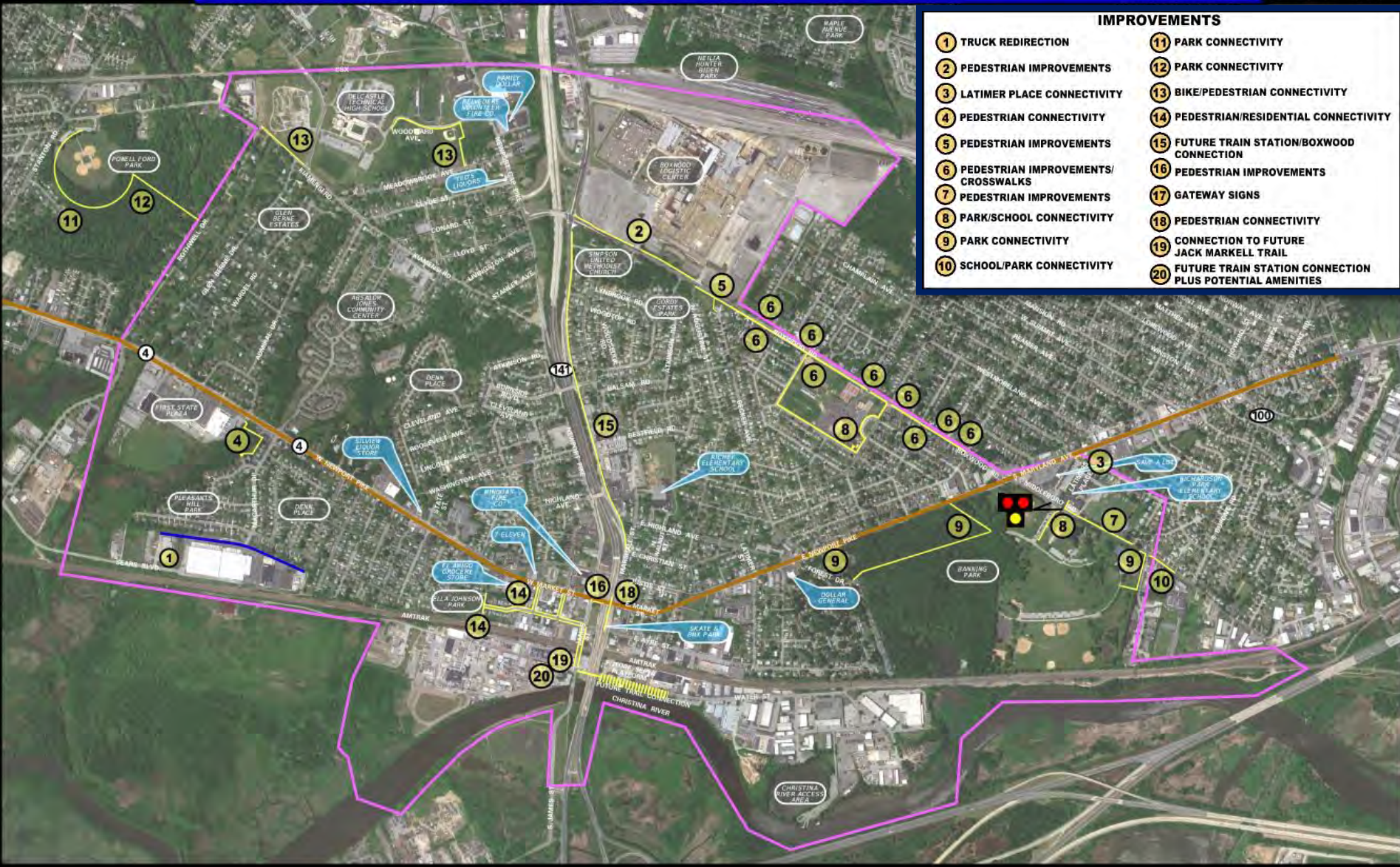
1. Improve Newport's multi-modal capacity. Newport is striving to become a more walkable, bikeable town.
2. Assess re-opening the Newport Train Station to commuter rail service.

Monitoring Committee

1. Review updates in and around Newport in comparison to the Newport Transportation Study
2. Prioritize recommendations in the Newport Transportation Study

Monitoring Committee

- Land development activity
- Traffic growth
- Transit
- Pedestrian movements
- Safety
- Master plan project status and prioritization
- Major project outside of study area
- Tasks for next year and follow ups





Newport River Trail Concept Design

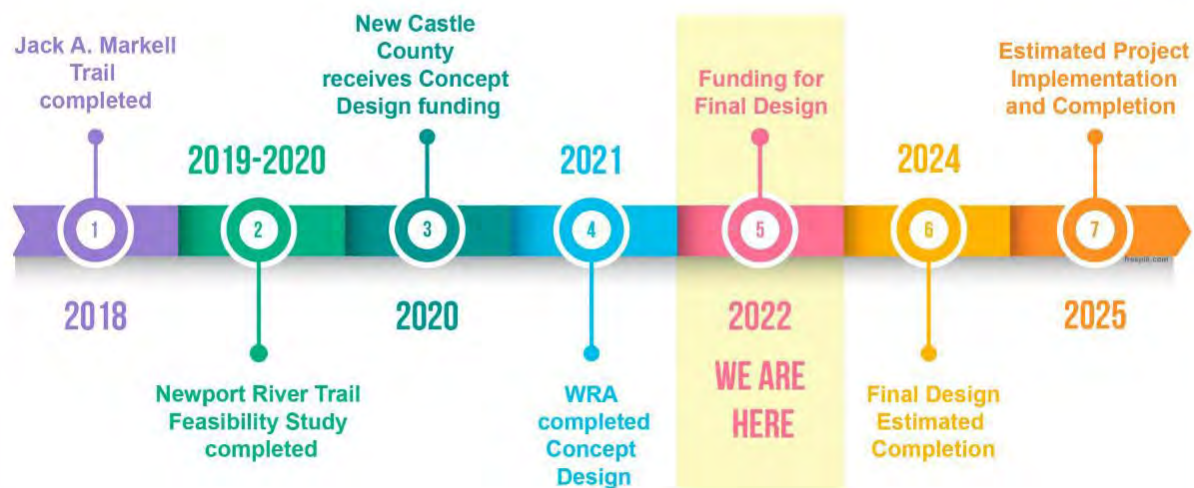
Newport River Trail Concept Design





Newport River Trail Concept Design

Project Schedule



Newport River Trail Concept Design – February 2022





DelDOT Maintenance Concrete Patching

SR 4

- Limestone Road to Glenside Avenue
- August to end of 2022
- Concrete patching and minimal curb replacement





DelDOT Pave and Rehab Improvements

SR 4

- Limestone Road to Augustine Street
- Construction 2023
- Concrete patching, driveway replacements, guardrail, and ADA Ramps
- 5 signal upgrades to improve pedestrian connectivity
- Concrete median removal with lane reconfiguration to accommodate a bicycle lane in each direction
- Sidewalk improvements
- Public workshop this fall 2022

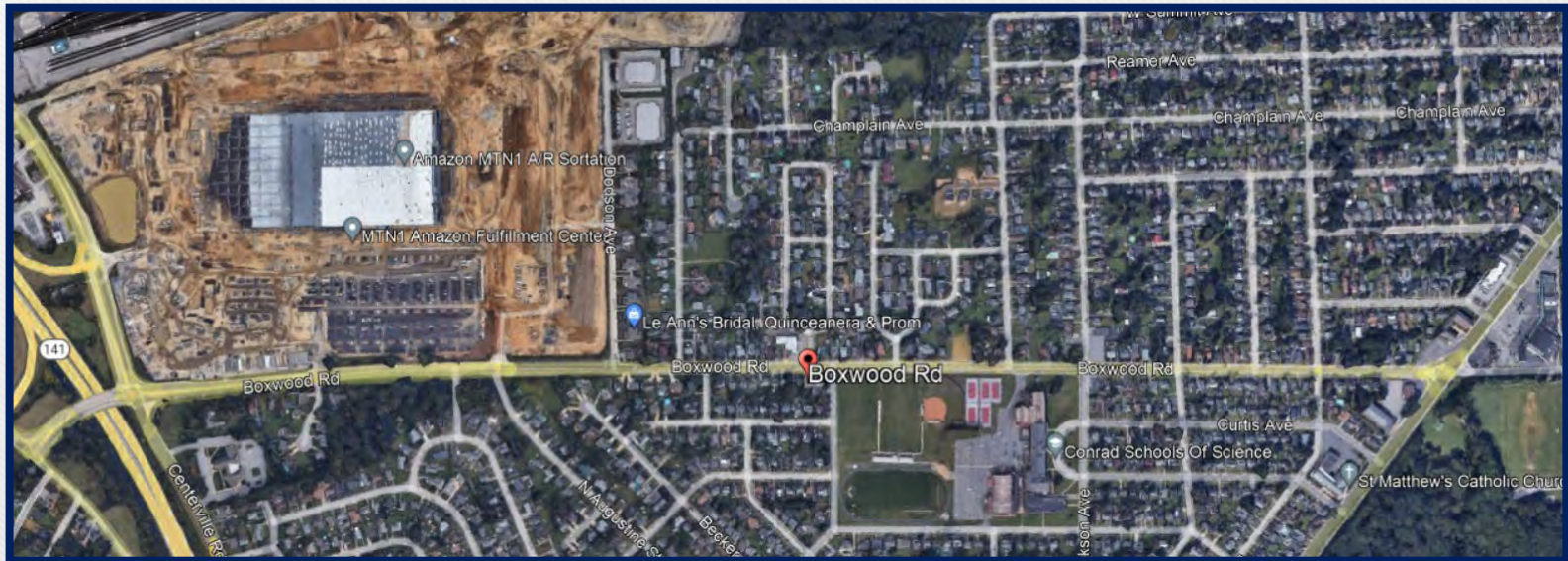
Mike Beulah
Pavement Management
Department of Transportation
Email: mike.beulah@delaware.gov



DeIDOT Street Lighting Analysis

Boxwood Road

- Centerville Road to SR 4
- No lighting Centerville Road to Rochelle Place
- New street lighting moving into design
- Schedule not available at this time

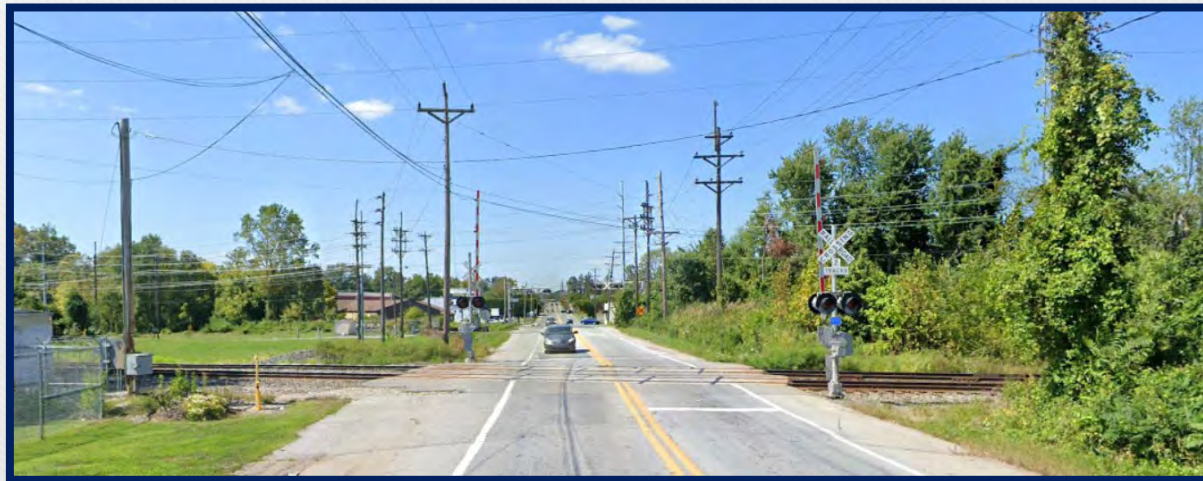




DelDOT Preemption and/or Advanced Warning Systems

Preemption and/or advanced warning systems

- Blocked roadways due to the usage of the railroad crossings
- Locations: Stanton Road, SR 14 NB and SB, Boxwood Rd, SR 2 EB and WB, Old Capital Trail EB and WB, Newport Gap Pike SB, and Centerville Rd SB
- All locations are part of FY23 program





DeIDOT Marshallton Roundabout Project

- Old Capital Trail intersections with Newport Road and Stanton Road
- Bike/Ped improvements
- Result of the Marshallton Circulation Study (2014)
- Project Timeline:
 - Construction Start Date: 2025
 - Construction End Date: 2026





DelDOT Marshallton Roundabout Project

3

Project Purpose and Need

- This project is a result of the Marshallton Circulation Study completed by WILMAPCO in 2014
- Provide intersection improvements at the Old Capitol Trail intersections with Newport Road and Stanton Road
- Address concerns with high volume cut through traffic and restore a more walkable connected community
- Rehabilitate/replace structures within the project limits



DeIDOT Marshallton Roundabout Project Stanton Road





DeIDOT Marshallton Roundabout Project Newport Road





DelDOT Marshallton Roundabout Project More Information

Deldot.gov/projects/



-  Studies 
-  Planning & Design 
-  Advertising / Bid / Award 
-  Under Construction 

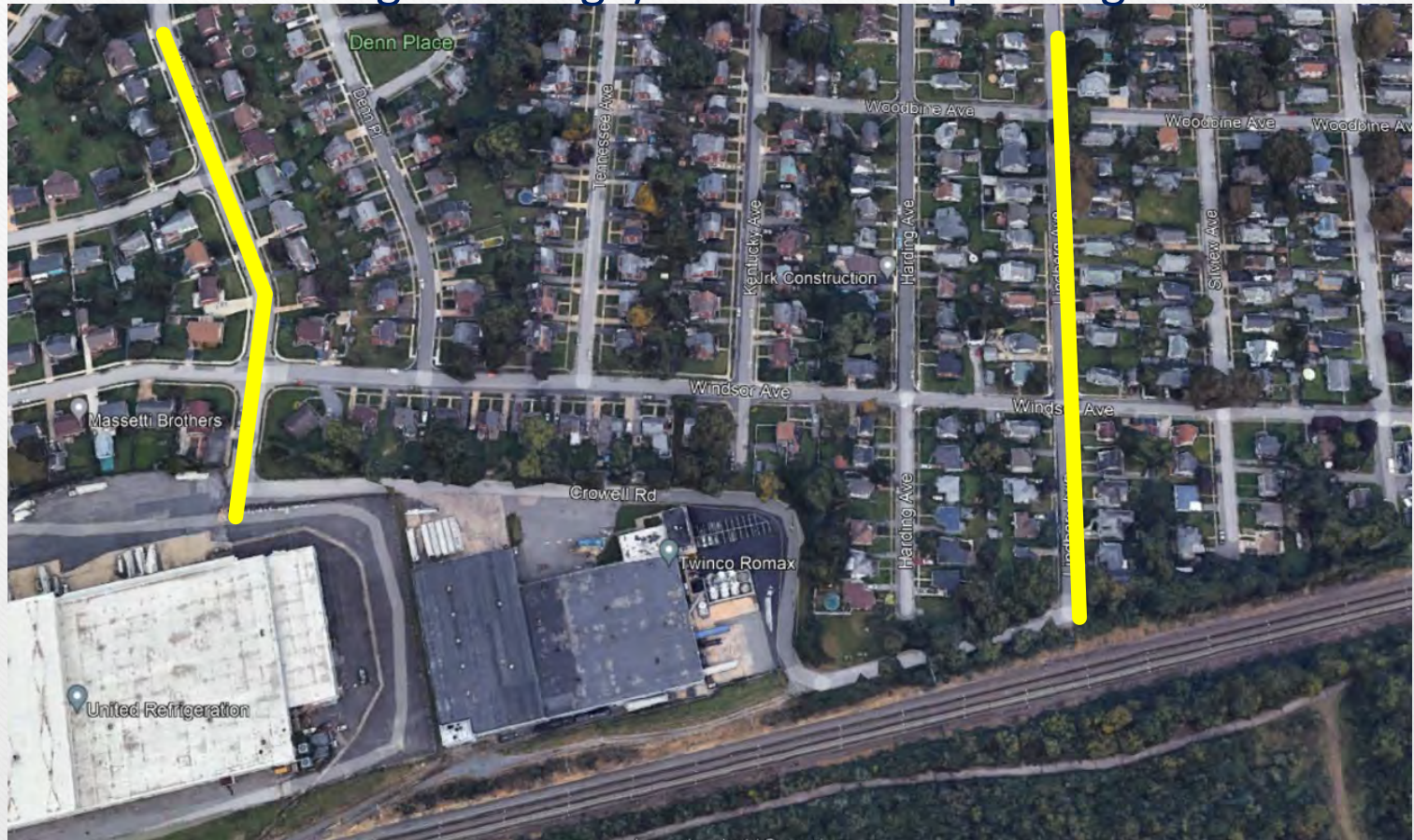


Old Capitol Trail, Newport Road to Stanton Road



Trucks MacArthur Drive

- Survey finished mid-summer
- Funding available to study connections
- Funding for design/construction pending





Updates

- Ridership
- Routes
- Amenities





Train Station Updates



Newport Train Station (Photo Courtesy Hagley Museum Archives)



2022 Update to the NCC Comprehensive Plan and The Newport Area

June 21, 2022



DEPARTMENT OF
LAND USE

NCC2050.newcastlede.go

v

Why We Plan



**A COMPREHENSIVE PLAN
IS THE STATE-MANDATED
FOUNDATION FOR COUNTY
DECISION-MAKING.**



- » Shapes the places in which we live, work, and play.
- » Directs the public services, infrastructure (streets, sidewalks, sewer services, and more) and capital investments that make our communities livable.
- » Guides the use, density, and design of homes and buildings, directly shaping the physical appearance of our neighborhoods while simultaneously preserving environmental, historical, and cultural assets.

NEW CASTLE COUNTY
**Comprehensive
Plan 2050**

ncc2050.newcastledel.gov

NEW CASTLE COUNTY
DEPARTMENT OF PLANNING AND LAND USE

NEW CASTLE COUNTY
DELAWARE

LAND USE

NCC2050

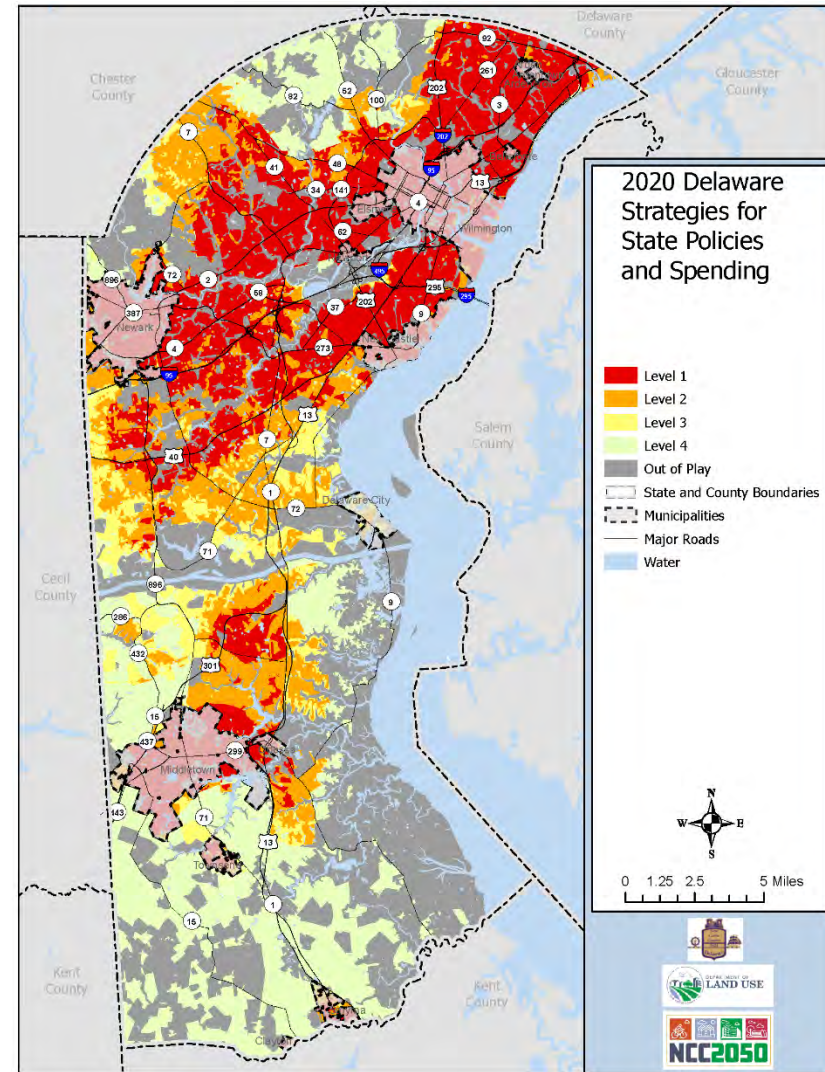
- 23

NCC2050 is guided by the State Strategies

Focus growth. Direct growth to Delaware's Level 1 (most urban/developed) and Level 2 (suburban) Investment Areas, as outlined in [2020 Delaware Strategies for State Policies and Spending](#) (achieving at least 70% of growth in Level 1 and 90% in Levels 1 and 2). (Objectives 2.3, 5.3, 10.1, and more)



strategies.stateplanning.delaware.gov

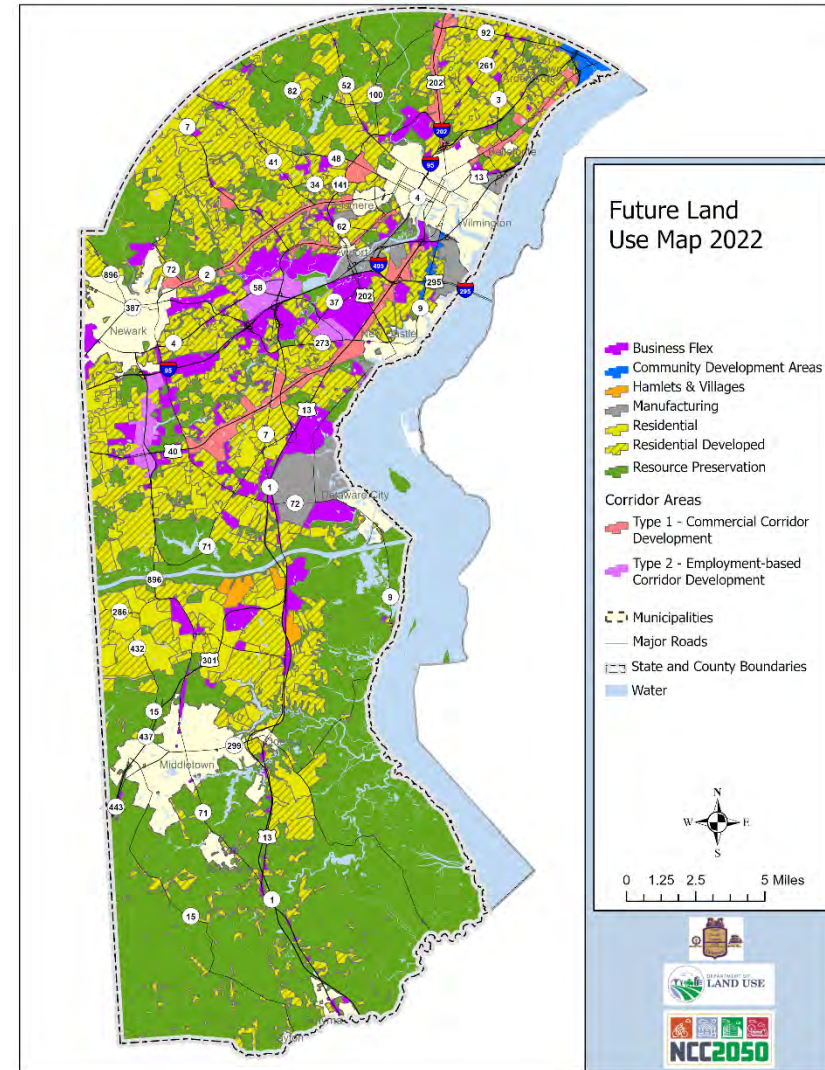


Future Land Use Map and Newport



Type 1 (Commercial Corridor Development)

- Tight integration of jobs and services with adjacent residential neighborhoods. Future development should seek to bolster this relationship.
- Non-residentially zoned land and uses – All development and redevelopment of these sites should be oriented and designed in a manner that creates massing and design for the corridor consistent with the vision and provisions of the Guiding Principles in the Unified Development Code for Commercial Corridor Development.

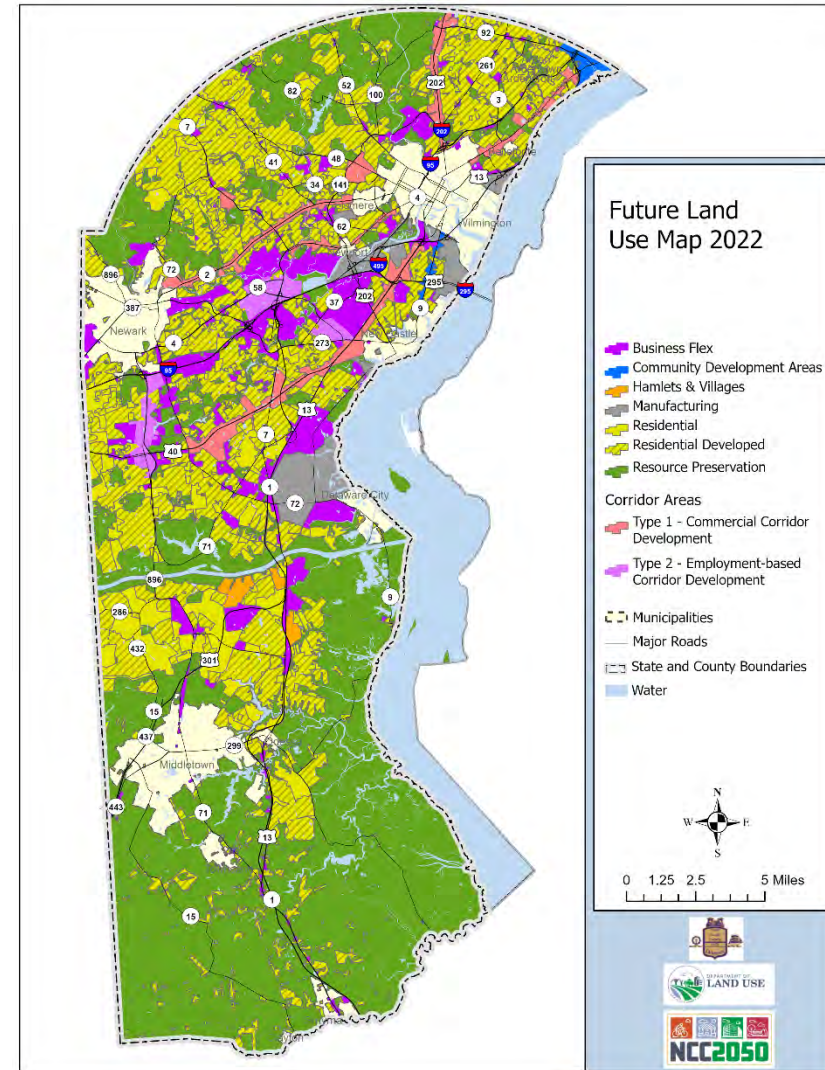


Future Land Use Map and Concord Pike



Type 1 (Commercial Corridor Development)

- Residential Zoned Land and Uses – Rezoning is appropriate when the proposed development is conducive in form and function to the Commercial Corridor Development (Guiding Principles) of adjacent non-residential land, while being sensitive to the context to neighboring residential development.
- Environmental, Agricultural and Historically significant land



Freight

NCC2050 looks to build on the 2022 Delaware State Freight Plan



Increase the variety and range of safe, quality housing options for all, in a diversity of locations; focus on revitalizing and preserving areas already developed, while responsibly guiding future development in a manner that is consistent with adjacent communities. (Objectives 4.1, 4.2)



Enact land use policies and regulations that incentivize infill and redevelopment in and around job centers.
(Strategy 5.3.2)



Transit Oriented Development

Transit Oriented Development (TOD) is an approach to planning with the focus on locating and developing compact walkable, pedestrian-oriented, mixed-use communities in conjunction with high quality public transit facilities. While the uses are important so too is careful consideration of the built form and its relationship with adjacent communities. TODs offer the potential to address important problems facing the county including traffic congestion, affordable housing, air pollution, and sprawl. Successful Transit Oriented Development takes a variety of different forms having a diversity of uses complimentary to its context.



Complete Streets

Streets should be designed with the needs of pedestrians, cyclists, and public transit, in addition to cars.

**Before
Complete Streets**

**After
Complete Streets**



CCED

Provides a legislated framework for local governments to develop land use policies to facilitate higher intensity, more urban development patterns in coordination with DeIDOT driven transportation planning and capital investment explicitly to prioritize transit, bike, and ped mobility.



CCED

Intergovernmental Effort between:

- The Town of Newport
- New Castle County
- DeIDOT



CCED

- Develop Walk/Bike/Transit Plans for the district
- Develop capital projects to realize the plans
- Boost CCED projects in capital prioritization
- Make all roads 25 mph
- Refrain from road capacity projects
- No off-street parking requirements





**Formal
plan
adoption
process is
underway**

- ✓ Delaware State Cabinet Committee – March 2, 2022
- ✓ New Castle County Council ordinance introduction – March 8, 2022
- ✓ New Castle County Land Use Committee – March 15, 2022
- ✓ Delaware PLUS – March 23, 2022
- ✓ New Castle County Planning Board Public Hearing– May 3, 2022
- ✓ Delaware State Cabinet Committee (Extension) – June 2, 2022
- ❑ New Castle County Planning Board Business Meeting - June 21, 2022
- ❑ **Delaware State Cabinet Committee – July 18, 2022**
- ❑ New Castle County Land Use Committee – July 19, 2022 (Tentative)
- ❑ Full New County Council consideration – July 26, 2022 (Tentative)
- ❑ Governor's Certification



Thank you!



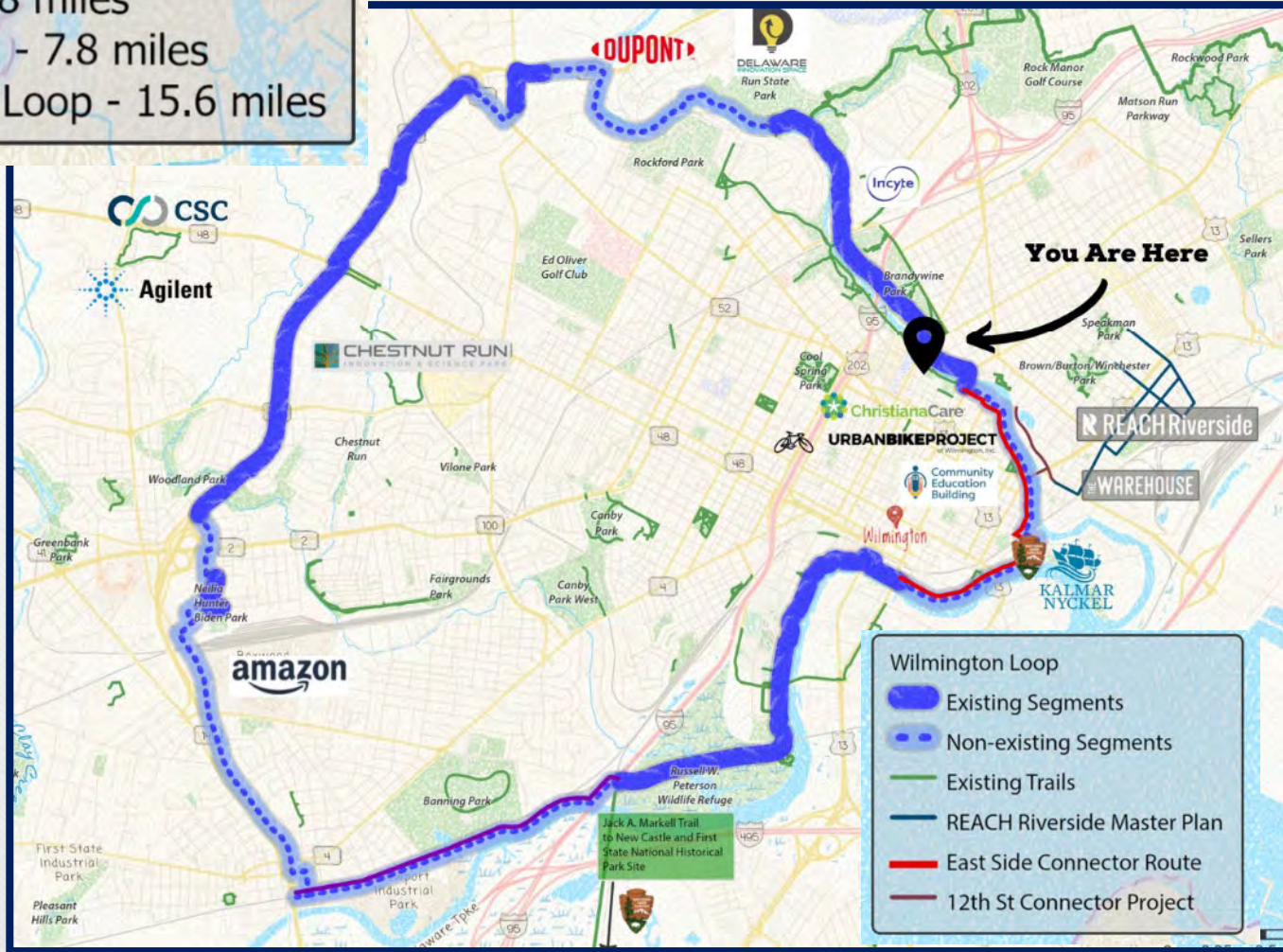
Website: NCC2050.Newcastlede.gov

Email: NCC2050@newcastlede.gov

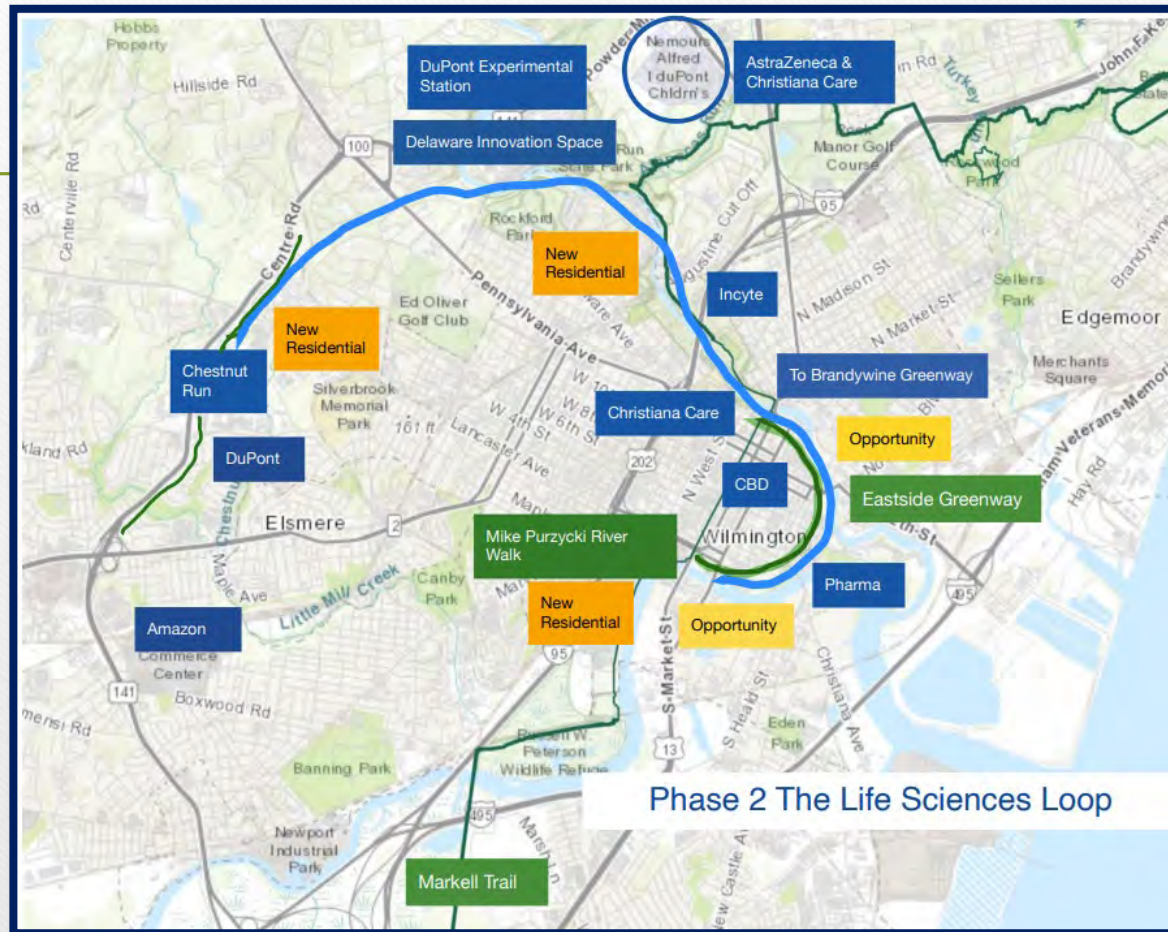


The Wilmington Loop Delaware Greenways

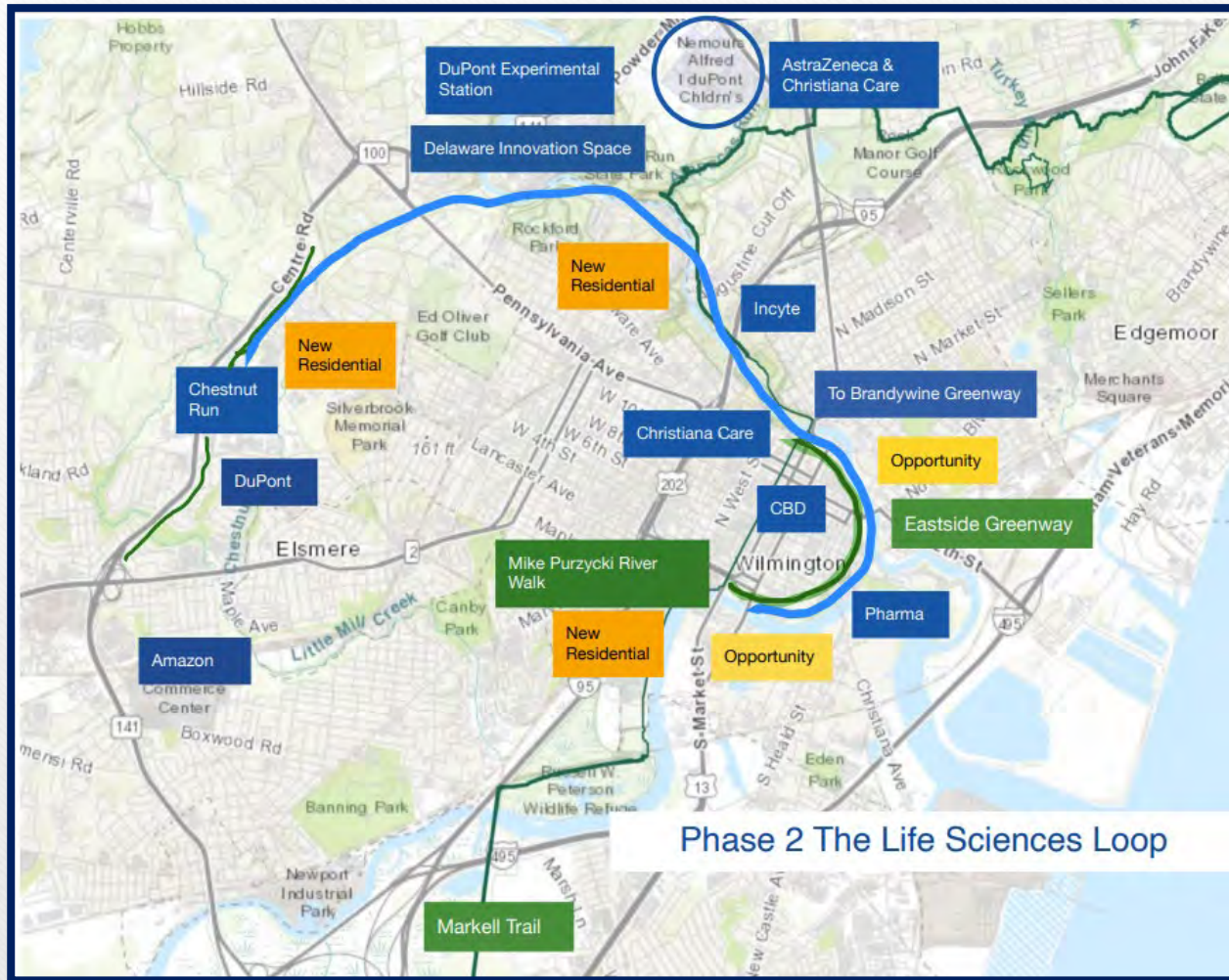
Existing - 7.8 miles
Not Existing - 7.8 miles
Wilmington Loop - 15.6 miles



Phase 2: “The Life Sciences Loop” – Connecting Residents with Thousands of Jobs



The Wilmington Loop Delaware Greenways



Phase 3: The Newport-Wilmington Trail



The Vision



Why Do This?

- Significant infrastructure investment and benefit to historically isolated/underserved East Side
- Transformational connector for state's largest city – improving access to cultural, educational and business resources
- Massive/measurable economic and public health benefits
- Game changer for Delaware QoL marketing
- ALREADY has broad support from diverse business, nonprofit and political leadership

Building Community

- Connecting Brandywine and Christina trails
 - Safe, easy access to Northern De Greenways, Jack Markell Trail
- Connecting underserved urban communities with access to healthy amenities and parks
- Connecting city employees with suburban jobs in:
 - Life Sciences
 - Banking
 - Health care
 - Corporate services
 - Hospitality
 - Vice versa
- Connecting people of all backgrounds, neighborhoods
- Connecting Wilmington, Newport and New Castle

Strengthening the economy

- Arts
- Food
- Culture
- Commerce
- History

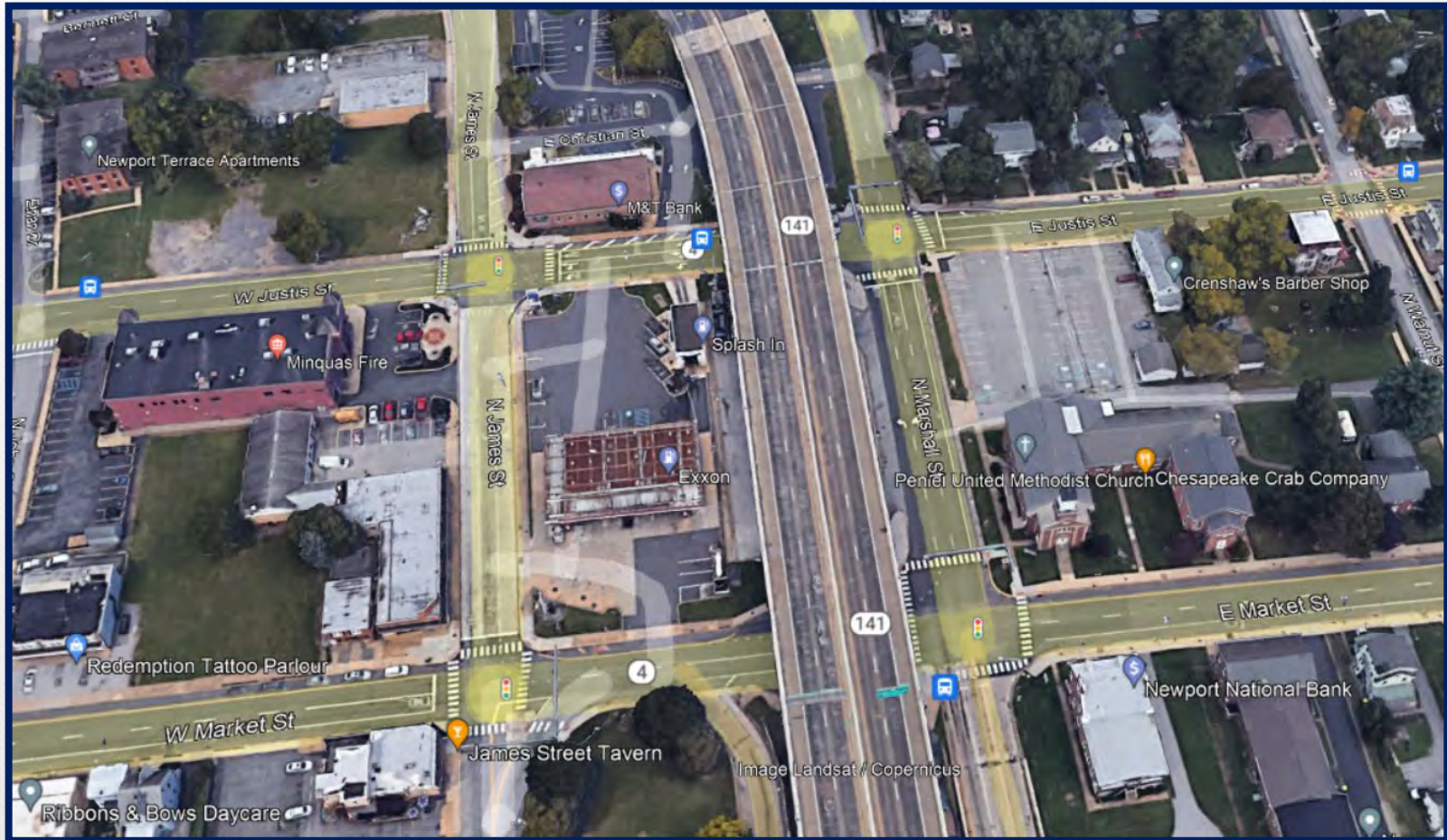
An immensely positive initiative – and selling point – for the livability and vitality of Greater Wilmington

More information can be found at:

Delawaregreenways.org/wilmington-loop/

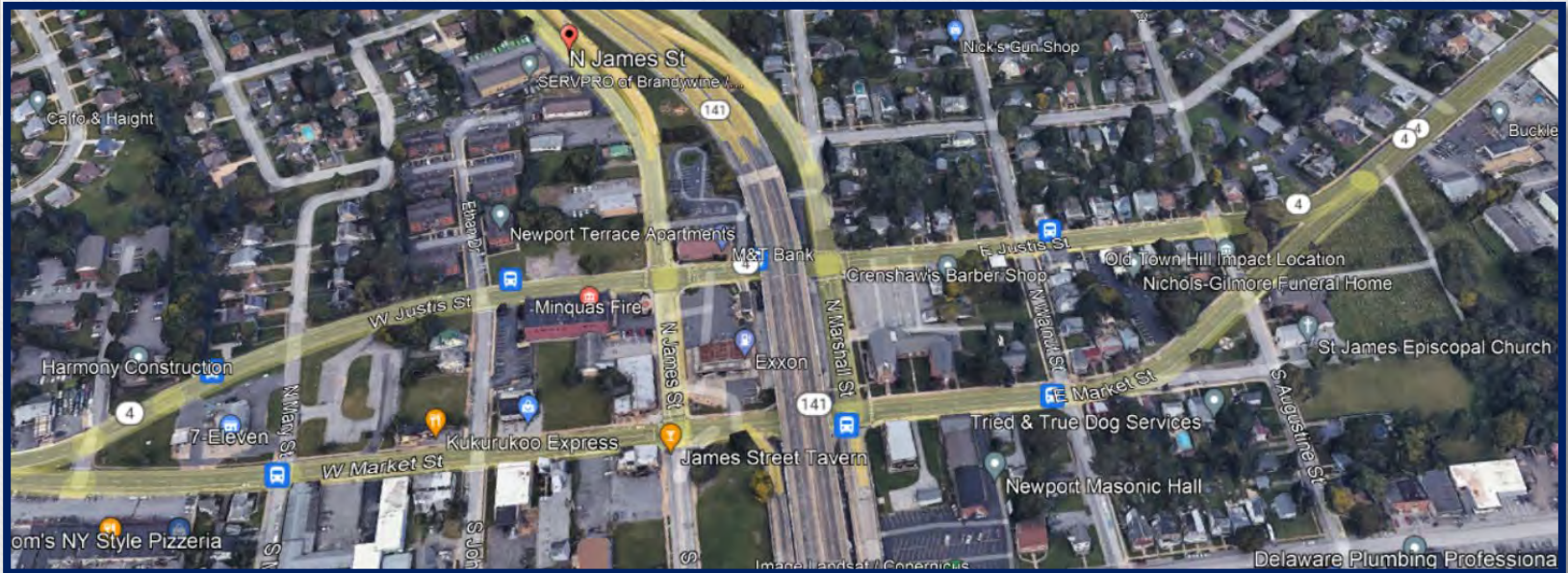
Community Feedback/Discussion

- Don't Block The Box



Community Feedback/Discussion

- Route 4 Traffic Congestion



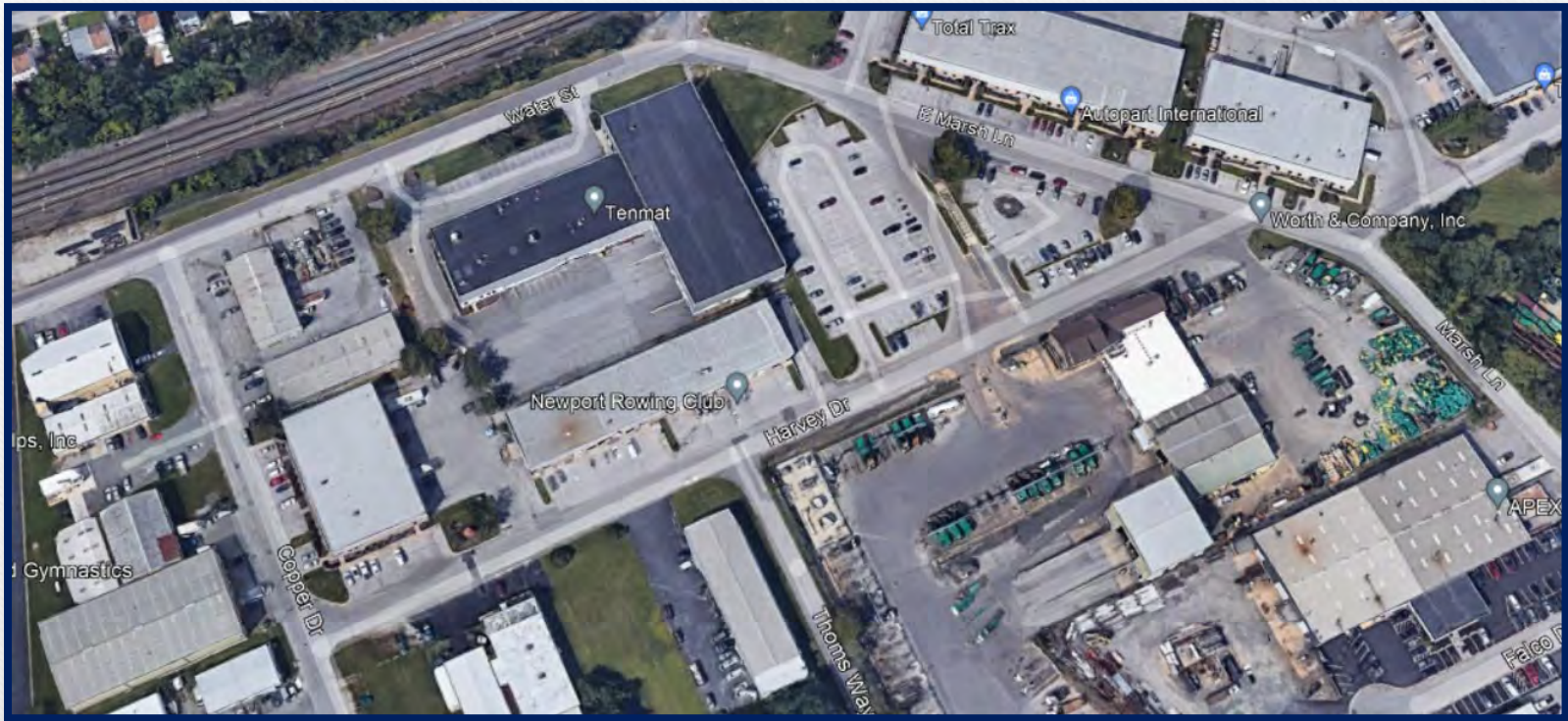
Community Feedback/Discussion

- Ayre Street between James St and Walnut St
- Disrepair



Community Feedback/Discussion

- Striping Water Street and Marsh Lane





Community Feedback/Discussion

- New Discussions
-



Community Ranking of Concerns

- Pedestrians
- Bicycles
- Transit
- Trucks
- Speeding
- Congestion

Next Steps

- 3 additional monitoring committee meetings this year
- Annual Corridor Monitoring Report
 - Land development activity
 - Traffic growth
 - Transit
 - Safety
 - Master Plan project status/prioritization
 - Major projects outside of study area
 - Follow up tasks
- Project Prioritization
 - Funding opportunities
 - Pave/rehab, capital, Transportation Alternatives Program (TAP), Community Transportation Funds (CTF), grants, Bicycle and Pedestrian Improvements Program (PAR)

THANK YOU