



RK&K

May 20, 2019

Kick-Off Meeting / Stakeholder Input

Safety & Capacity Improvement Study for 5-Point Intersection



WILMAPCO



Agenda

- ❖ Welcome + Introductions
- ❖ Study Overview
- ❖ User + Prioritization Exercise
- ❖ Criteria Testing
- ❖ Closing Remarks + Next Steps

WELCOME + INTRODUCTIONS

Welcome + Introductions

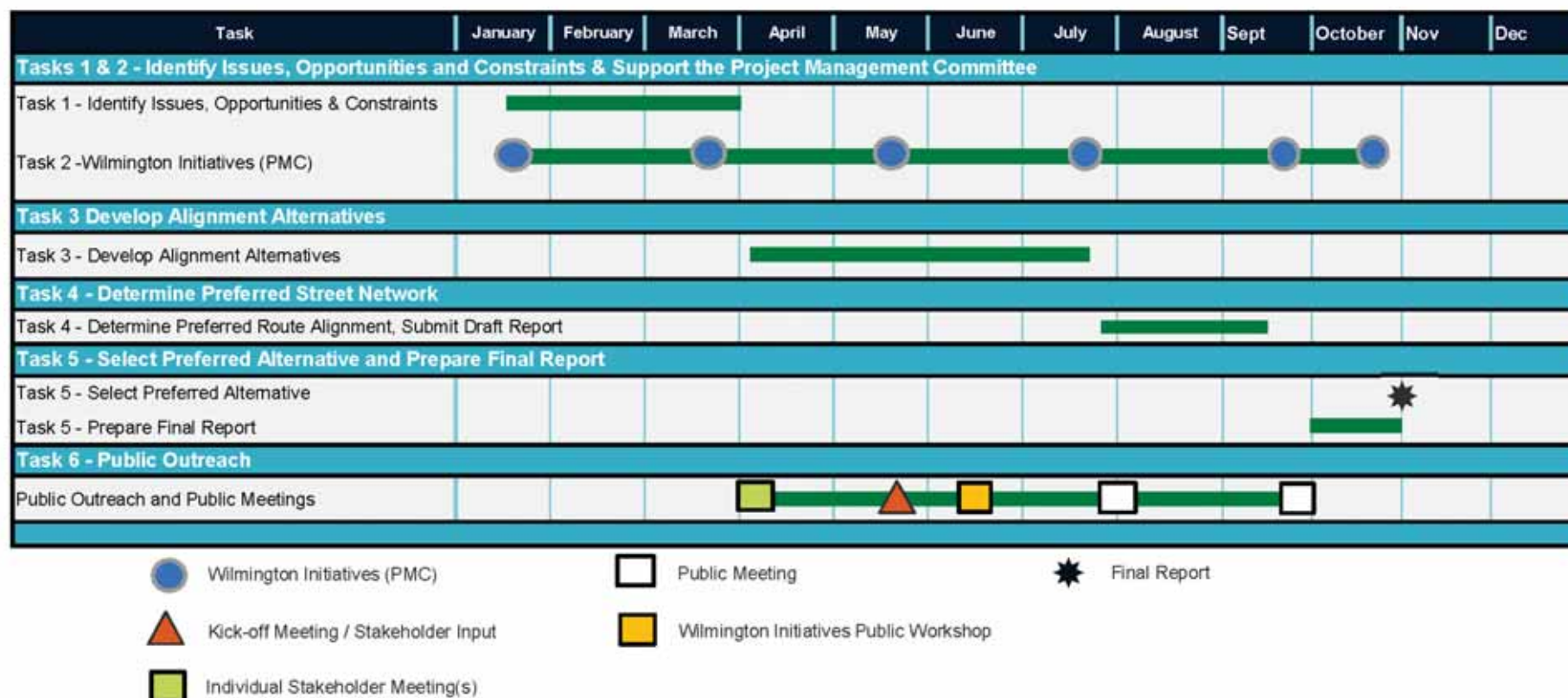
- ❖ Name
- ❖ Organization
- ❖ Why Do You Want To Be Involved In This Process?

STUDY OVERVIEW

Why Are We Here?

- ❖ **Optimize Circulation, Access, and Safety**
 - Improve Efficiency / Effectiveness of the Transportation Grid
- ❖ **Improve Multimodal Connectivity**
- ❖ **Recommend Transportation Improvements that Support Existing and Potential Future Land Use**

Proposed Schedule



What We Have Learned To Date

❖ Transportation and Circulation

- **Vehicular traffic** typically backs up on I-95 NB during the morning rush
- **Vehicular traffic** backups on Maryland Avenue at the MLK Blvd intersection were significantly improved by changing the lanes from 2 to 3 right turn lanes 6-7 years ago
- While there are not significant gaps in the sidewalk network, ADA compliance is a challenge and crossing the 5-Point intersection is difficult for **pedestrians**
- There are no separated **bicycle** facilities in the area and the roadway condition is difficult for many bicyclists to navigate
- **Bus** circulation is key to consider in concept development as this is DTC's maintenance hub for the regional system

What Have We Learned From Stakeholders To Date?



What Have We Learned From Stakeholders To Date?



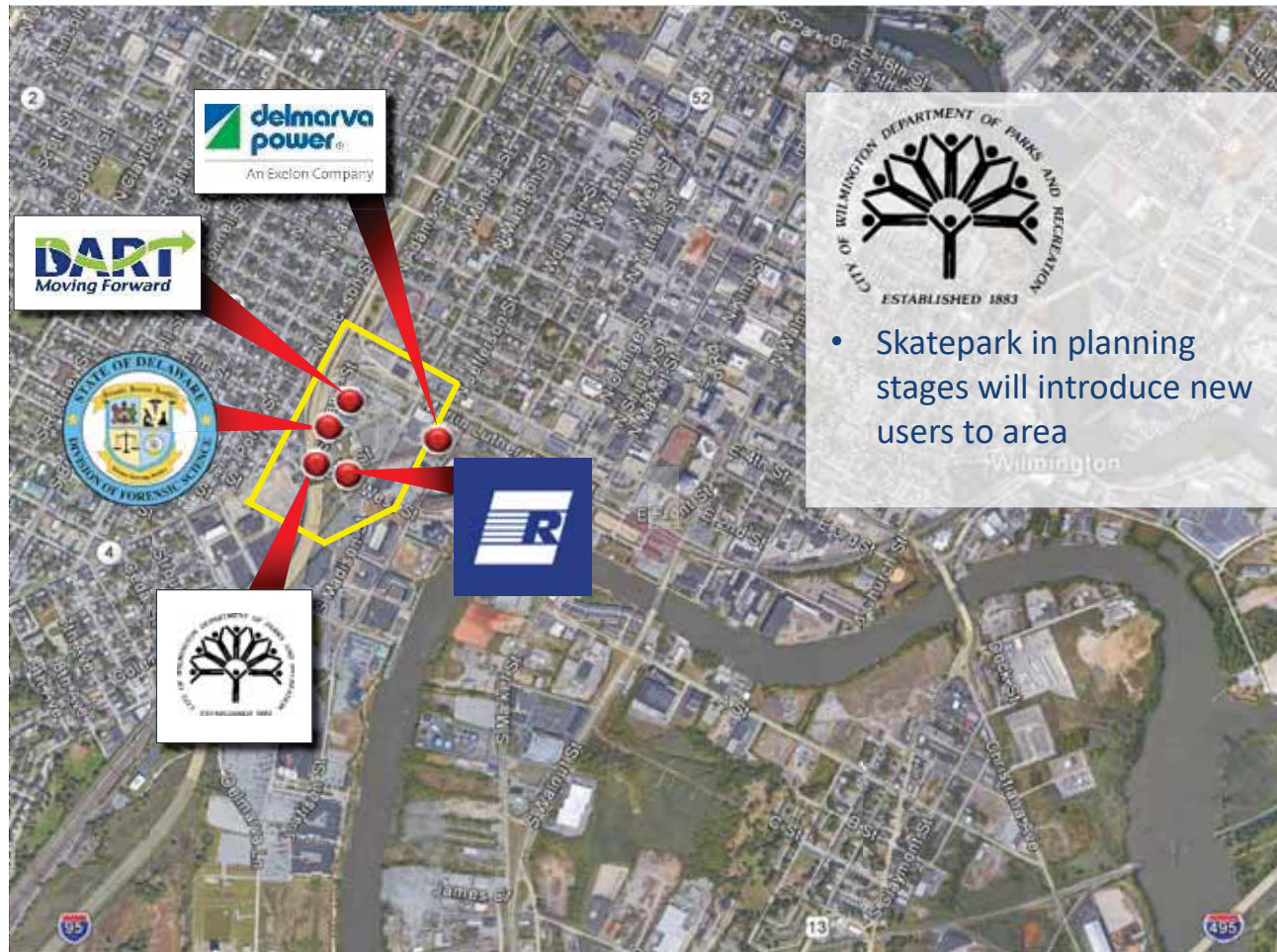
What Have We Learned From Stakeholders To Date?



What Have We Learned From Stakeholders To Date?

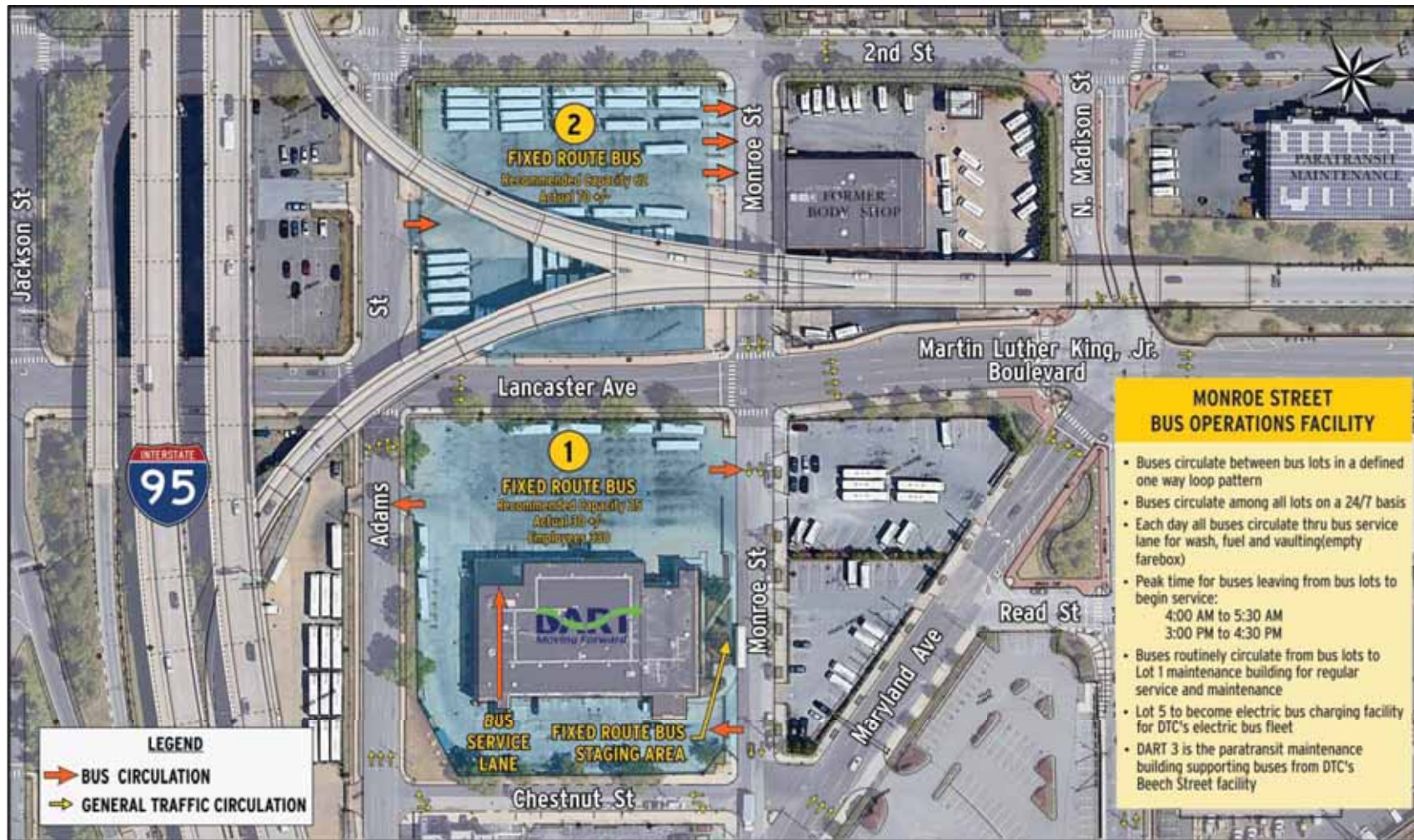


What Have We Learned From Stakeholders To Date?

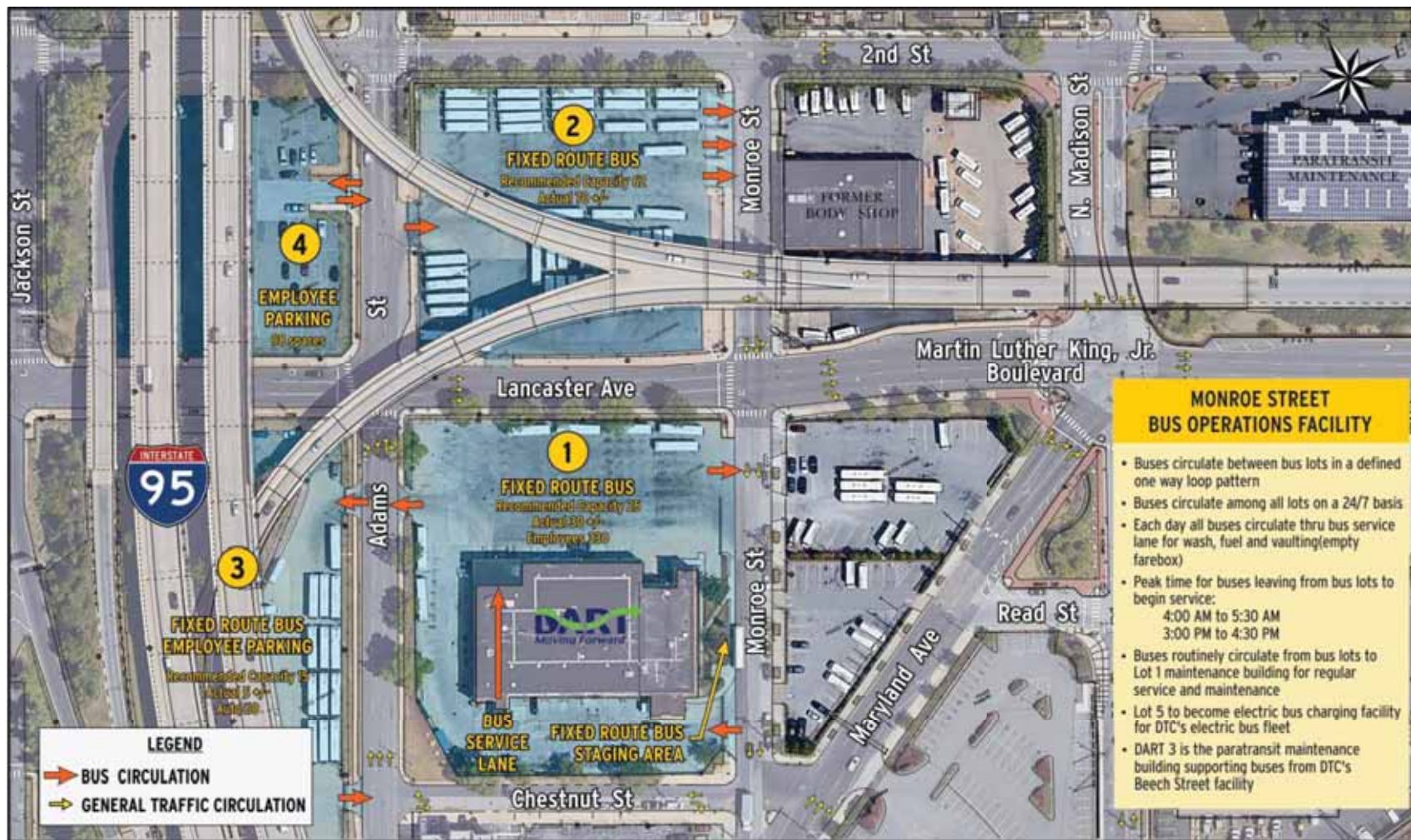


















What We Have Learned To Date

❖ History and Previous Alternatives

- Initial Study 2009



What We Have Learned To Date

❖ History and Previous Alternatives

- Initial Study 2009
- Further Study 2011



What We Have Learned To Date

❖ History and Previous Alternatives

- Initial Study 2009
- Further Study 2011



What We Have Learned To Date

❖ History and Previous Alternatives

- Initial Study 2009
- Further Study 2011
- Current Study



USER + PRIORITIZATION EXERCISE

PRIORITIZATION EXERCISE

5-Point
Wilmington
DE

WHO are the users?

HOW do they use the space?

WHAT are their priorities?

<div></div> <div>who who</div> <div>who who</div>	<div></div> <div>who who</div> <div>who who</div>	<div></div> <div>who who</div> <div>who who</div>
<div></div> <div>who who</div> <div>who who</div>	<div></div> <div>who who</div> <div>who who</div>	<div></div> <div>who who</div> <div>who who</div>
<div></div> <div>who who</div> <div>who who</div>	<div></div> <div>who who</div> <div>who who</div>	<div></div> <div>who who</div> <div>who who</div>
<div></div> <div>who who</div> <div>who who</div>	<div></div> <div>who who</div> <div>who who</div>	<div></div> <div>who who</div> <div>who who</div>

WHO are the users?

- ❖ Types of people
- ❖ Ages and abilities
- ❖ Think about time of day – how do users vary?
- ❖ Think about land use – which types of user are attracted to the area?
- ❖ Are there stakeholders who may not be users?

HOW do they use the space?

A yellow rectangular sticky note with a white border and a subtle drop shadow, intended for user input.A yellow rectangular sticky note with a white border and a subtle drop shadow, intended for user input.A yellow rectangular sticky note with a white border and a subtle drop shadow, intended for user input.A yellow rectangular sticky note with a white border and a subtle drop shadow, intended for user input.

- ❖ Based on each of your users, how do these people use the space?
- ❖ What do they need?
- ❖ How do they feel?

WHAT are their priorities?



- ❖ What is most important to people circulating to and through this area?
- ❖ Do some users have the same priorities?
- ❖ How would you rank each?

SAFETY (PED, BIKE, MOTORIST - VEHICLE, TRUCK, BUS)

EFFICIENT MOVEMENT

CONNECTED NETWORK (PED, BIKE, MOTORIST – VEHICLE, TRUCK, BUS)

ENVIRONMENTAL IMPACTS

PUBLIC SUPPORT

FOSTERS ECONOMIC DEVELOPMENT

COST

COMPLIMENTS EXISTING LAND USE

COMPLIMENTS POTENTIAL FUTURE LAND USE

PROMOTES SENSE OF COMMUNITY

ALIGNS WITH GOALS OF STAKEHOLDERS

ALIGNS WITH GOALS OF CITY

ROW IMPACTS

BUILDING / PROPERTY IMPACTS

“GREEN” INFRASTRUCTURE OPPORTUNITIES

ADDITION TO STREET GRID

ABILITY TO PHASE PROJECT

CRITERIA TESTING

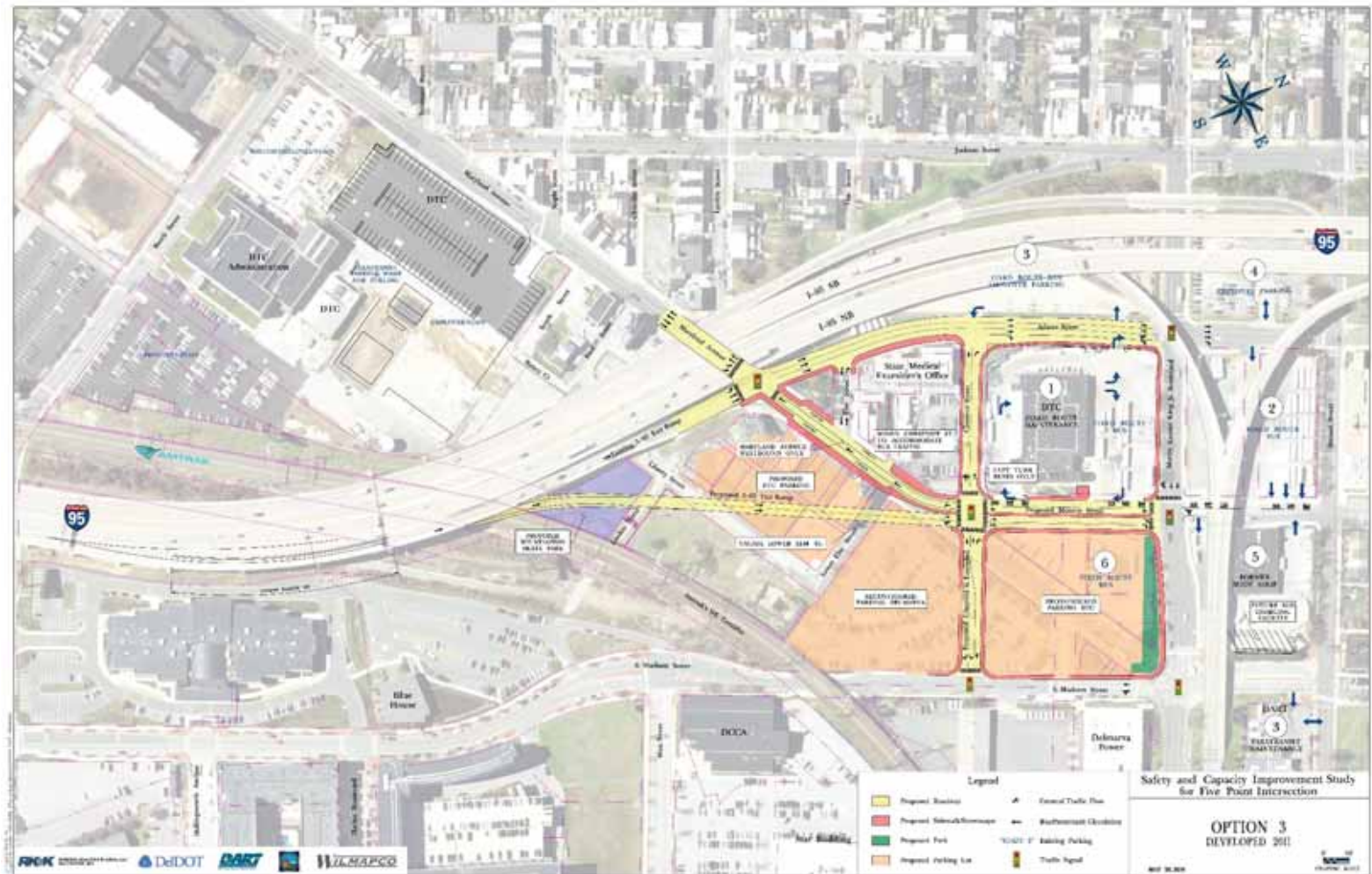
Option 1



Option 2



Option 3



CLOSING REMARKS + NEXT STEPS

Proposed Schedule

