



# **Bike Map Evolution**

## **Sharing perspectives.**

Steve Spindler  
New Castle, DE, March 21, 2014



# NEW CASTLE COUNTY DELAWARE BICYCLE MAP



## Have Fun. Curb Your Car.

It's easy to live a car-free, or even car-lite, lifestyle in Delaware! Use your bicycle and these tips to start down the path to a healthier, more efficient form of travel.

1. Find your home on the Delaware Bicycle Maps and draw a circle with a one- or two-mile radius around it. Use a highlighter to mark places inside the circle that you regularly visit.
2. Choose a familiar place and try bicycling rather than driving. See if you can find a comfortable route and secure parking. Add a new location every 1-2 weeks.
3. See if you can find a closer destination for errands that fall outside your circle. By slowly increasing the number of bicycle trips and incorporating transit or using a carshare program, you'll be leaving your car in the lot!

(Adapted from [www.BikeNew.org](http://www.BikeNew.org))

## Bikes on Transit

**DART First State Bike and Bus** • [www.dartfirststate.com](http://www.dartfirststate.com) • (800) 452-5047

All DART buses statewide are equipped to carry bicycles. Information on DART's more than 60 local routes, including fares, can be found at [www.dartfirststate.com](http://www.dartfirststate.com). All local buses have racks on the front to store two bicycles.

In addition to these local routes, three routes provide intercounty service throughout Delaware. The 301 bus carries bicycles between Dover, Smyrna and Wilmington. This service is especially convenient for cyclists wanting to take one-way bike trips into the southern part of the county from Wilmington. The bus travels on Delaware Route 1, stopping at selected park and ride lots as noted on the map. Bicycles may be placed in the baggage bay of the bus. The one-way fare between Wilmington and Dover is \$4.50. The 302 bus carries bicycles between Dover and Georgetown. The one-way fare between Dover and Georgetown is \$4.50. The 306 bus offers service between Wilmington and Hahobeth Beach Friday through Sunday in season. The one-way fare between Wilmington and Hahobeth Beach is \$7.00.

**DART's Pedal and Park Program** • [www.dartfirststate.com](http://www.dartfirststate.com) • (800) 452-5047

Bike lockers are available at several park and ride locations. When you can't take your bike on a bus, and you don't want to take the way to work, you can park your bike in a secure locker. There is a \$10 key deposit for this service.

**SEPTA Regional Rail, Wilmington/Newark Line** • [www.septa.org](http://www.septa.org) • (215) 596-7800

SEPTA carries bicycles on all of its peak direction trains. The Wilmington/Newark line from Philadelphia serves Claymont, Wilmington, Churchmans Crossing, Fairplay and Newark. Saturday and Sunday service only stops at Claymont and Wilmington.

**Amtrak** • [www.amtrak.com](http://www.amtrak.com) • (800) USA-RAIL

Certain Amtrak trains have baggage cars and carry boxed bicycles for a fee from Wilmington Train Station. Bicycle boxes are available at the Wilmington Station for \$55.

**Greyhound and Peter Pan Bus Service** • [www.greyhound.com](http://www.greyhound.com) • (800) 231-2222

These bus companies carry bicycles between Wilmington, New York, Washington and certain points in New England on a space available basis. The front wheel must be removed and bicycles may need to be boxed if there is limited space.

## Crossing the Delaware by ferry

**Three Forks Ferry** • [www.threeforksferry.com](http://www.threeforksferry.com) • (302) 434-7901

The Ferry operates weekends and holidays, from late May through early September. Starting in mid-June the ferry is open Wednesday, Thursday and Friday through Labor Day Weekend. Bicycles are not allowed on Poo Pat Island.

**Tickets:**

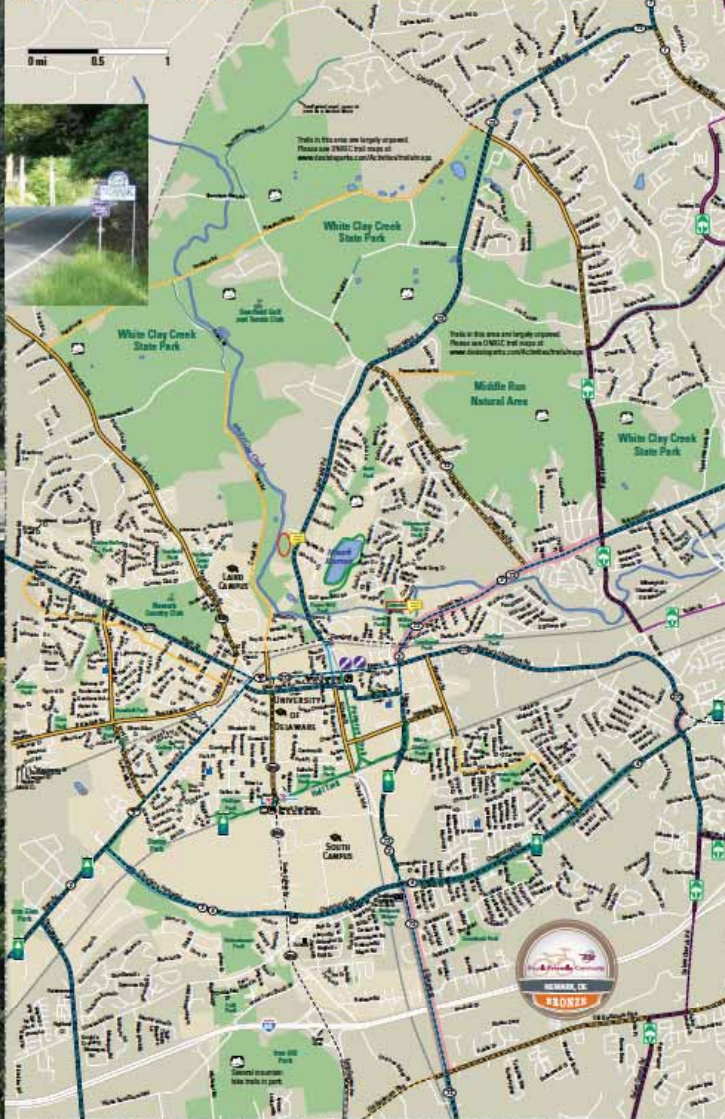
- Adults \$11
- Children ages 3-12 \$6
- Seniors and Military \$10
- Children 2 and under are free.

**Cape May - Lewes Ferry (Sussex County)** • [www.capesaylewesferry.com](http://www.capesaylewesferry.com) • (800) 64-Ferry

In DE (800) 426-1155 or in NJ (800) 886-1125

This ferry between Cape May, NJ and Lewes, DE, takes about an hour and a half. Many people bring bikes and use the ferry as a day trip. Adult tickets for foot passengers are \$10, or \$10 round trip. The website (P2A2) has further information about bicycle routes from the Lewes Terminal.

## Newark

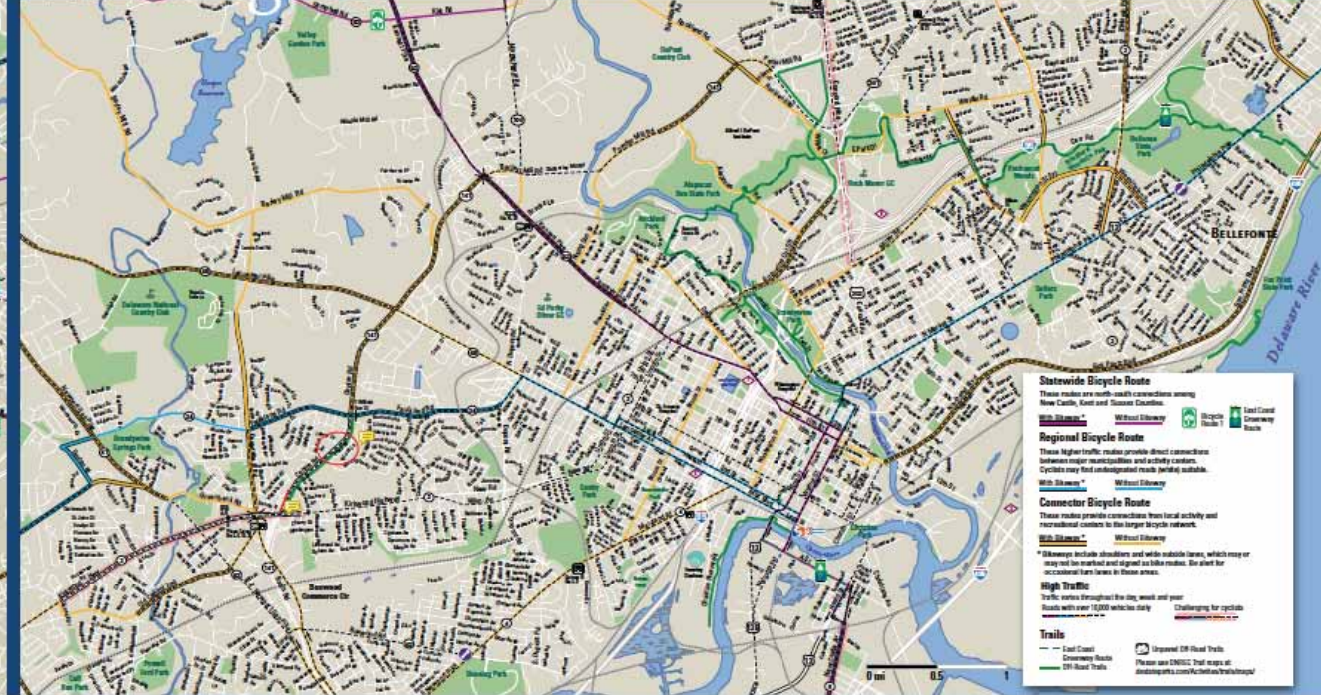


## Bikes on buses, trains and ferries



Bringing a bicycle on a bus can save you a great time saving to a nearby bicyclist, or a welcome relief from the heat or rain.

## Wilmington



**Statewide Bicycle Route**  
These routes are north-south connections among New Castle, Kent and Sussex Counties.

**Regional Bicycle Route**  
These higher traffic routes provide direct connections between major municipalities and activity centers. Cyclists may find undesignated roads partially suitable.

**Connector Bicycle Route**  
These routes provide connections from local activity and recreational centers to the larger bicycle network.

**High Traffic**  
Traffic routes throughout the day, week and year. Routes with over 1000 vehicles daily.

**Trails**  
East Coast Greenway, Delaware River, and other trails.

**Unimproved Off-Road Trails**  
Please use DART's Trail maps at [www.dartfirststate.com/active/trailmaps/](http://www.dartfirststate.com/active/trailmaps/)

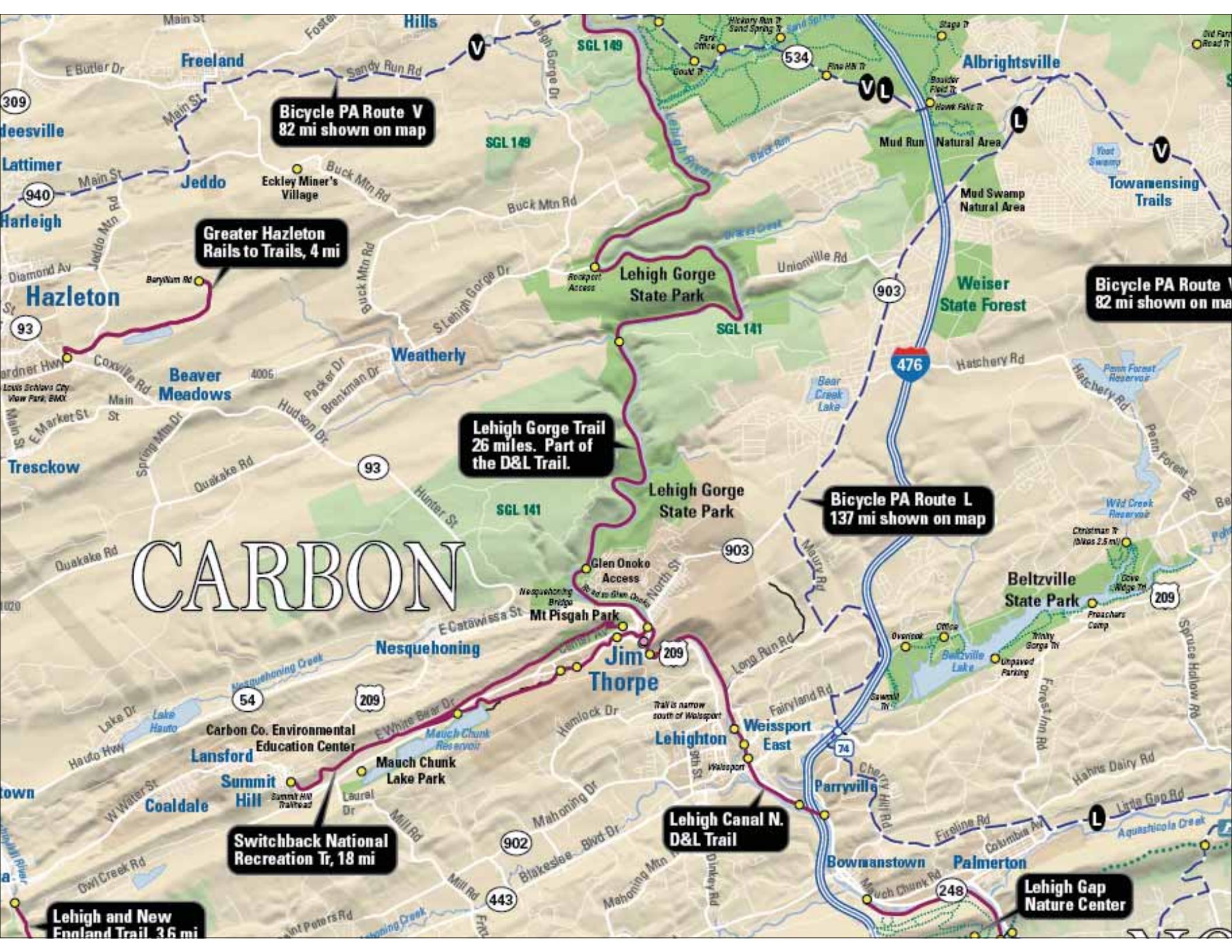


# e Map

# Southern New Jersey







**Bicycle PA Route V**  
82 mi shown on map

**Greater Hazleton**  
Rails to Trails, 4 mi

**Lehigh Gorge Trail**  
26 miles. Part of  
the D&L Trail.

**Bicycle PA Route L**  
137 mi shown on map

**Bicycle PA Route V**  
82 mi shown on map

# CARBON

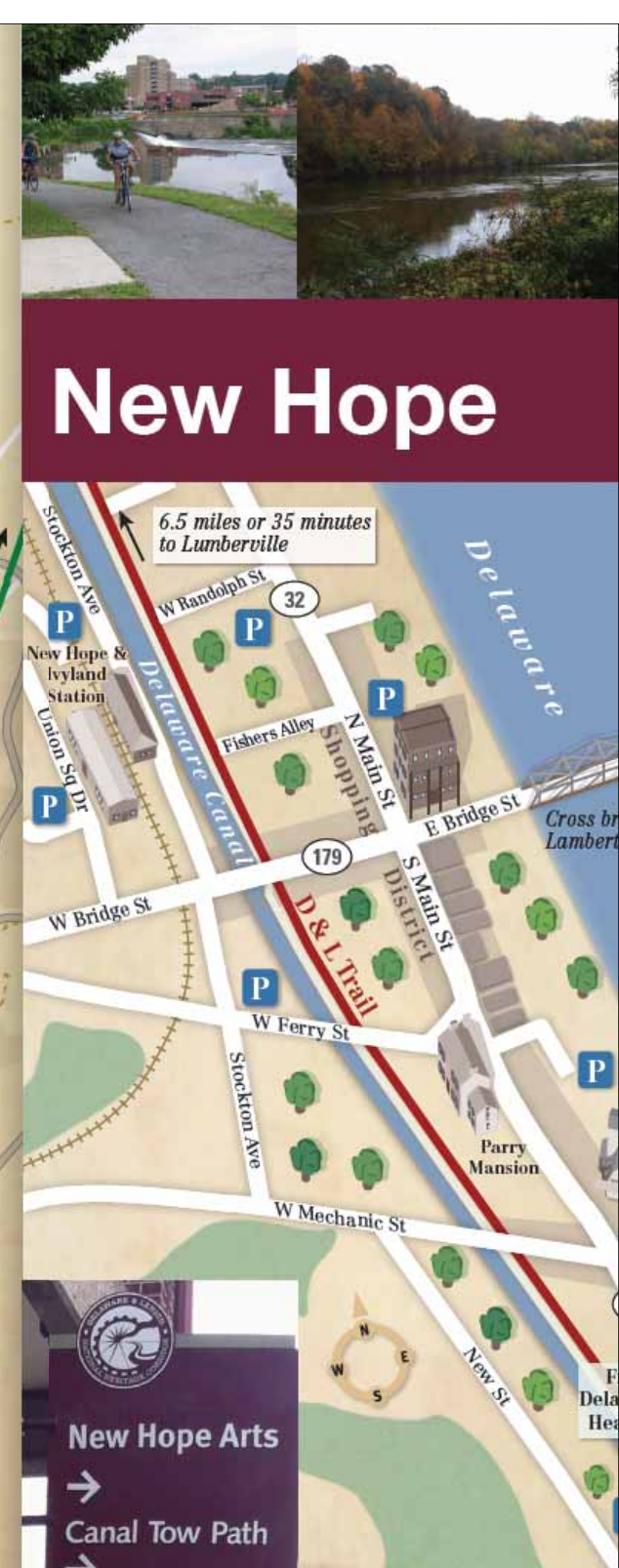
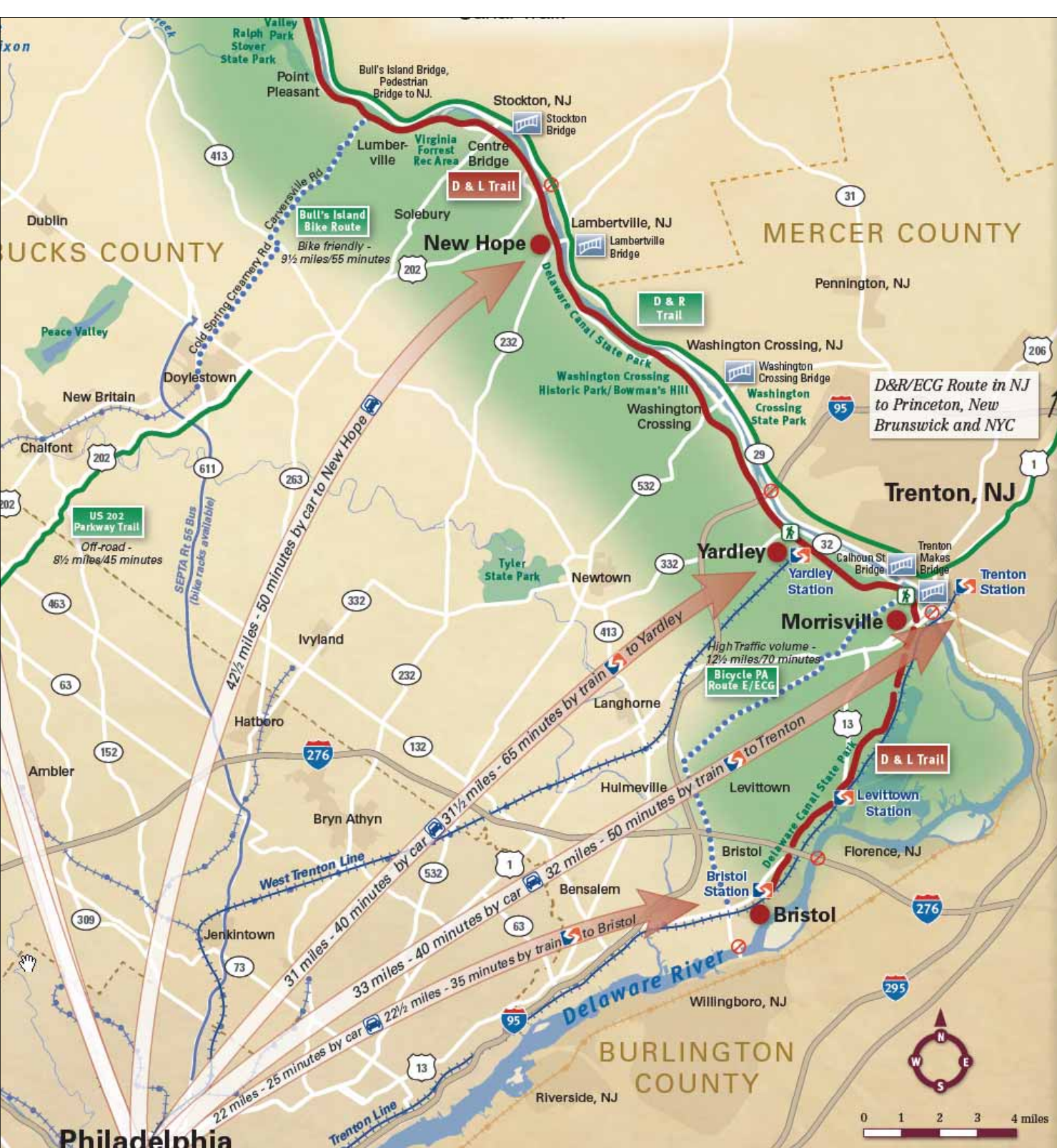
**Switchback National**  
Recreation Tr, 18 mi

**Lehigh Canal N.**  
D&L Trail

**Lehigh and New**  
England Trail, 36 mi

**Lehigh Gap**  
Nature Center



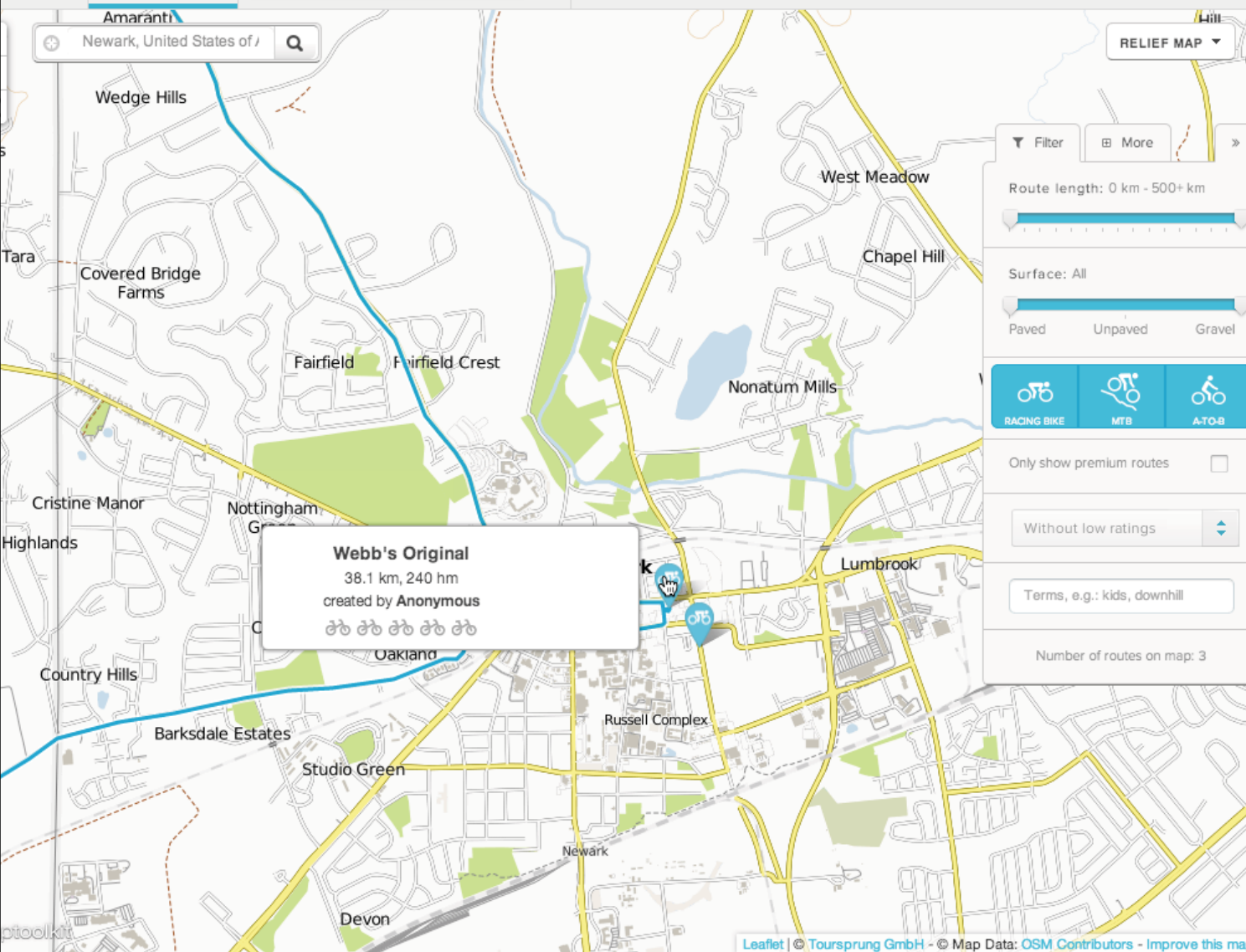




A photograph of three men smiling and holding white coffee cups in a hallway. The man on the left is balding with a goatee, the man in the middle has brown hair and a blue jacket, and the man on the right has dark hair and a blue jacket. The hallway has a curved ceiling with recessed lights and a large, dark, abstract sculpture in the background.

**bikemap**  
**Shared perspectives.**





Filter More

Route length: 0 km - 500+ km

Surface: All

Paved Unpaved Gravel

RACING BIKE MTB A-T-O-B

Only show premium routes

Without low ratings

Terms, e.g.: kids, downhill

Number of routes on map: 3

## Welcome!

Welcome to the brand new Bikemap!  
Don't hesitate to ask questions or give Feedback on our [Facebook page](#) or the [Bikemap User Forum](#)!  
Have fun with the new Bikemap!

Track your favorite routes on map - or get new route tips. For training, vacation, and trip planning. Currently, there are 1,119,251 bike routes with a total length of 106,794,434 km.

Register for free for personal route collection and training log.

### New routes

### Top Routes in Map



**Webb's Original**  
38 km 10 hm  
harv5865



**Ride Home**  
29 km



**77.6 mile loop on routes 82 and 100**  
125 km



**Bikemap**

Like You like this.

You and 27,257 others like Bikemap.



Facebook social plugin





mapmyride

MY HOME

DISCOVER

IMPROVE

Try MVP

Steve ▾ 🔍

Home ▸ US ▸ Delaware ▸ Newark

## NEWARK CYCLING TRAILS

Popular Routes ▾

SEARCH FOR ROUTES



Susq River Run

DISTANCE:

43.39 mi

ELEVATION

897

CREATED

03/15/2007



051107 W/Glenn

DISTANCE:

20.16 mi

ELEVATION

5

CREATED

05/11/2007



050207

DISTANCE:

9.18 mi

ELEVATION

0

CREATED

05/02/2007

### NEWARK STATS

Like Share 0

Routes: 2036

Courses: 163

Groups: 6

Events: 0



### NEWARK WEATHER



Current Weather

50° Clear 74% Humidity

[OpenWeatherMap](#)

### NEWARK AMBASSADORS

### NEWARK CYCLING STORES

[More Stores »](#)

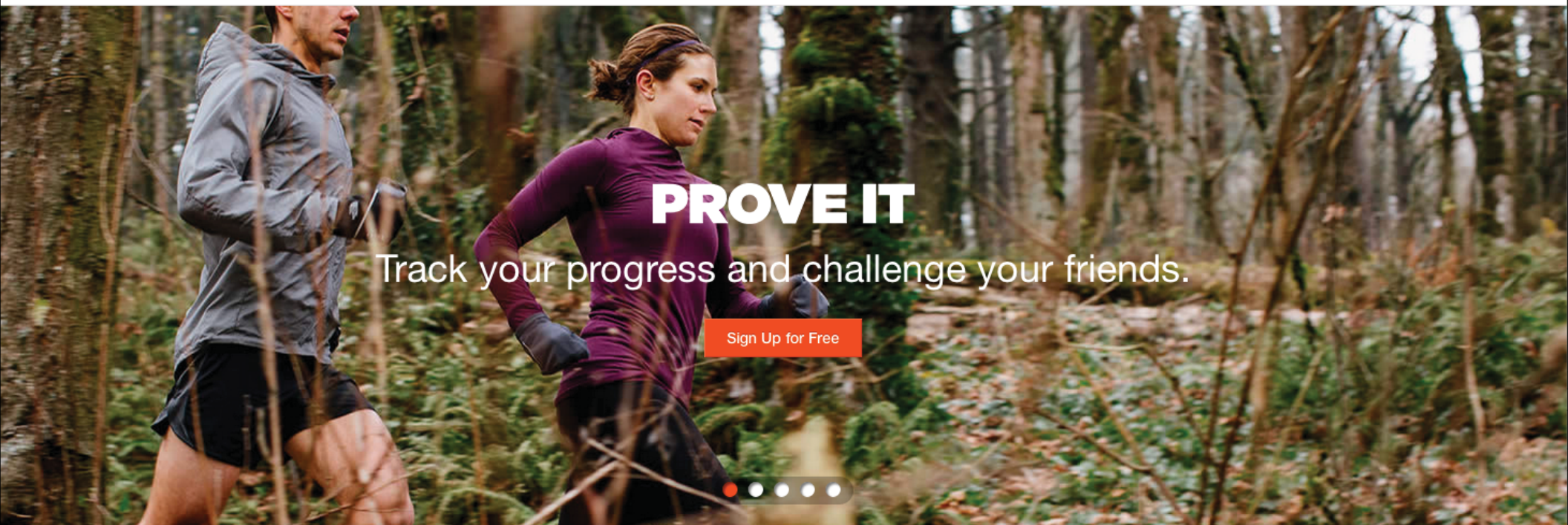


Bike Line

212 E Main

Support





**PROVE IT**

Track your progress and challenge your friends.

Sign Up for Free

## How It Works



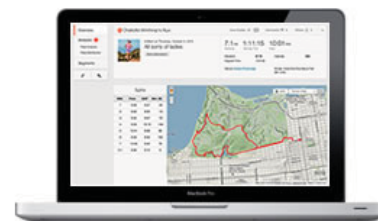
1

Grab a GPS Device



2

Go Out for a Run or Ride



3

View Your Activities  
on Strava.com



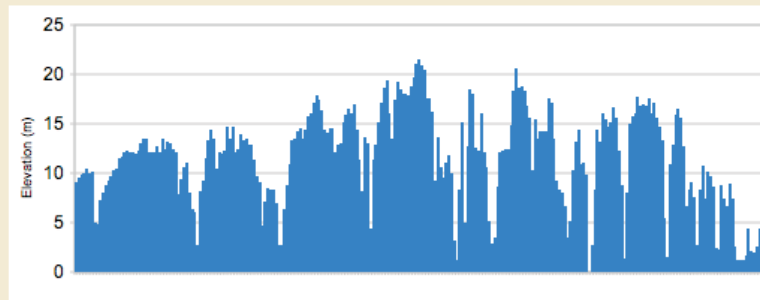
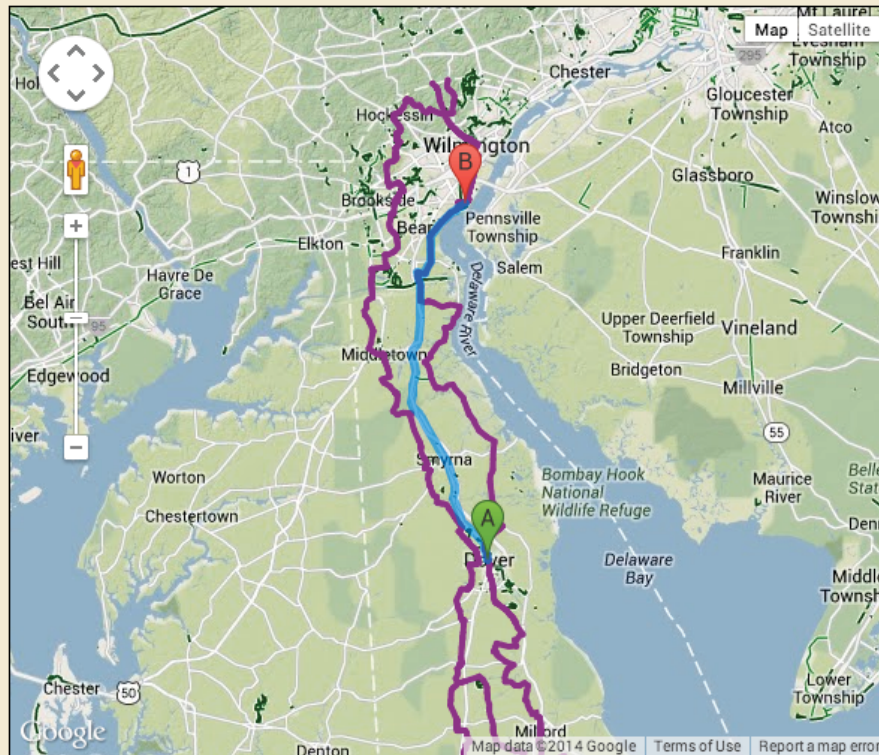




# **Navigating a different route**



# Delaware Bicycle Route Information



Register with us to submit photos and receive project updates

Your Email

\*\*\*\*\*

Login

[or Register Now](#)

[Home](#) | [Contact Us](#)



## Delaware State Bicycle Route Information

From:

dover, de

To:

new castle, de

[Get Directions](#)

### Navigation Tips

### Safety Tips

*Disclaimer: This map was created with the most recently available DE bike map data, however there may be discrepancies between what is shown on the map and actual conditions. Please use caution when planning routes using this map as actual conditions may vary from what is shown here. Routes suggested by google bicycling directions show up as light green dotted lines and are not state data. You may want to check [DelDOT travel advisories](#) before you go.*

- ☒ State Bicycle Route
- ☐ Suggested Connectors
- ☐ Trails
- ☐ American Discovery Trail
- ☐ Regional Bicycle Route
- ☐ High traffic roads
- ☐ East Coast Greenway
- ☐ Shoulders, both sides
- ☐ Bike Repair Shops

Total Distance: 40.1 mi

Bicycling directions are in beta. Use caution – This route may contain streets that aren't suited for bicycling.

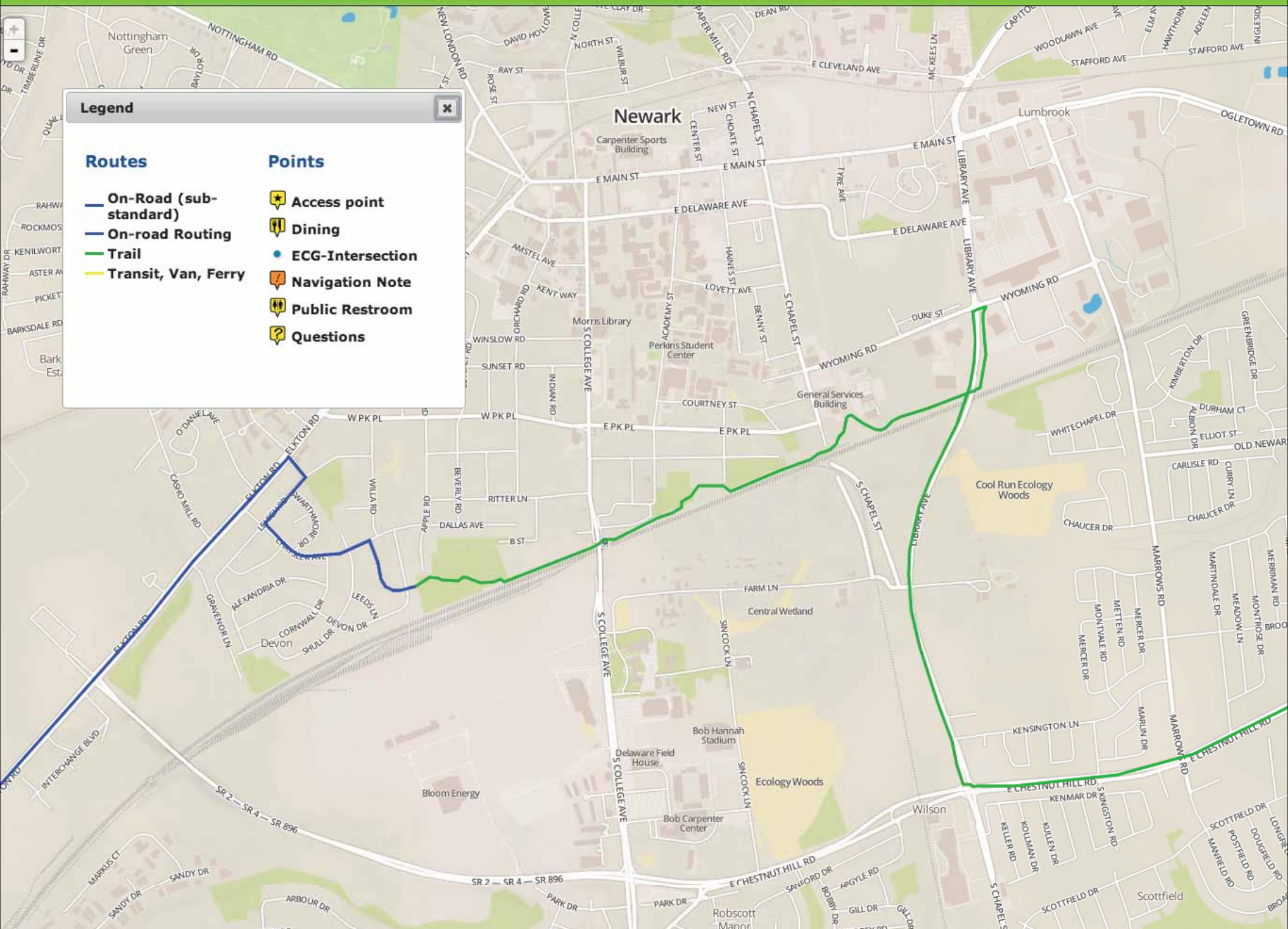
Dover, DE, USA

40.1 mi - about 3 hours 13 mins

1. Head north on S State St toward Reed St 1.6 mi
2. Turn left onto US-13 N 29.1 mi
3. Turn right onto Cox Neck Rd 0.7 mi
4. Turn left onto Clarks Corner Rd 1.3 mi
5. Continue straight onto DE-9 N/Hamburg Corner River Rd/River Rd 6.2 mi  
Continue to follow DE-9 N
6. Slight right onto W 7th St 0.8 mi
7. Turn right onto South St 367 ft

[Home](#) | [Contact Us](#)







## Legend

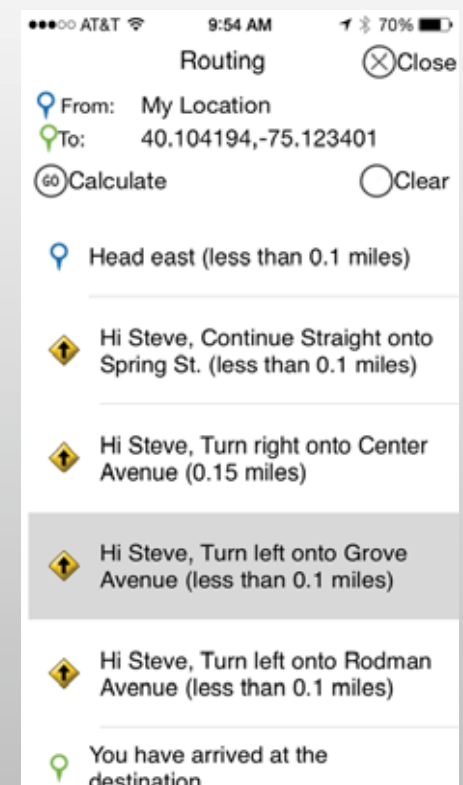
## Routes

- On-Road (sub-standard)
- On-road Routing
- Trail
- Transit, Van, Ferry

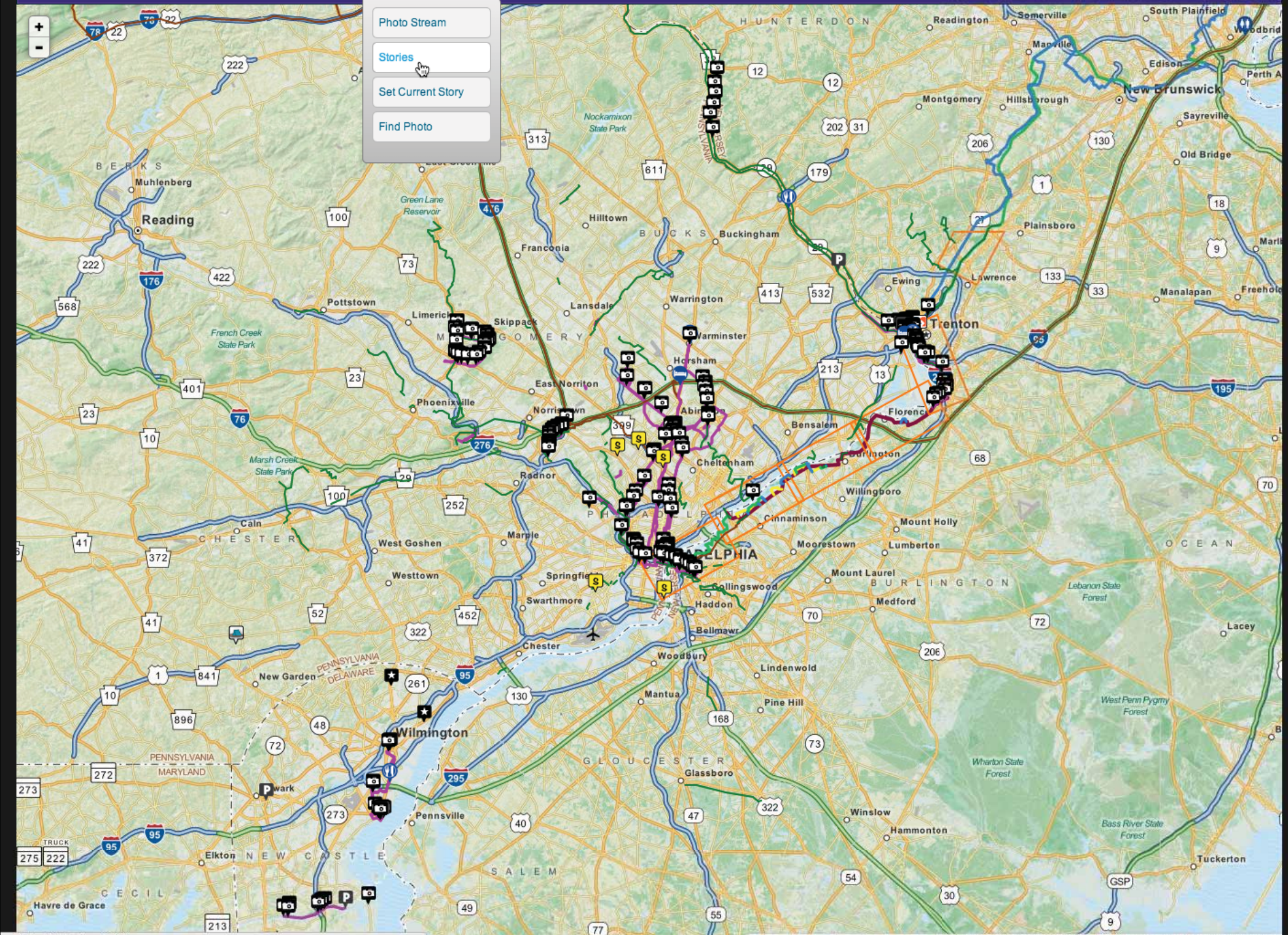
## Points

- ★ Access point
- 🍴 Dining
- ECG-Intersection
- 📍 Navigation Note
- 🚻 Public Restroom
- ❓ Questions

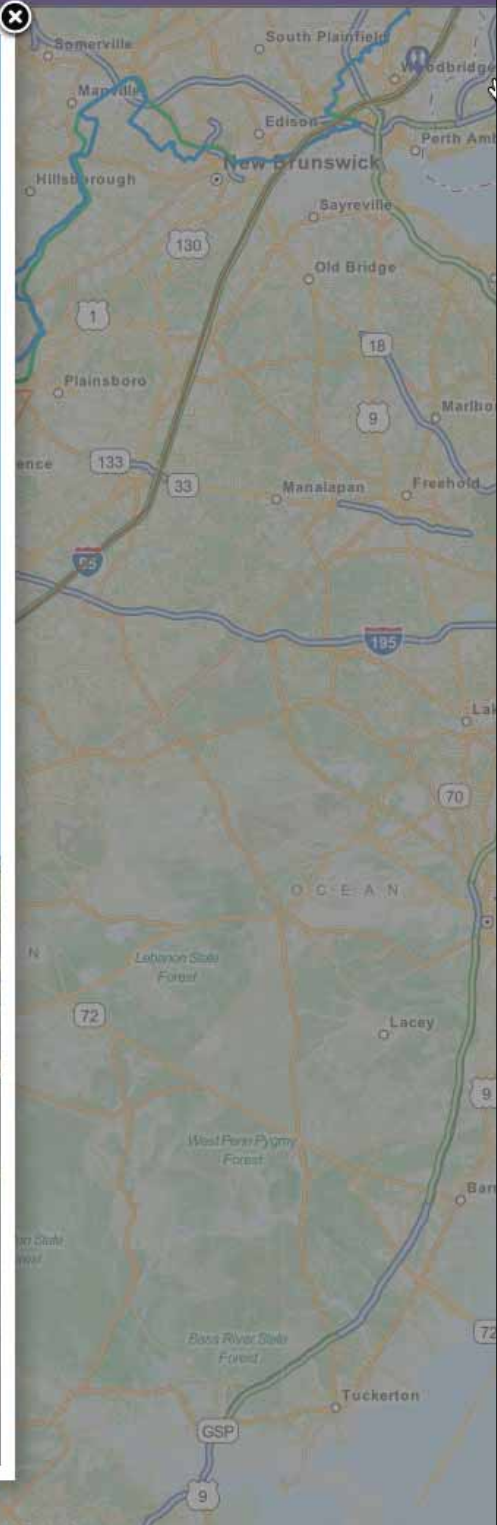
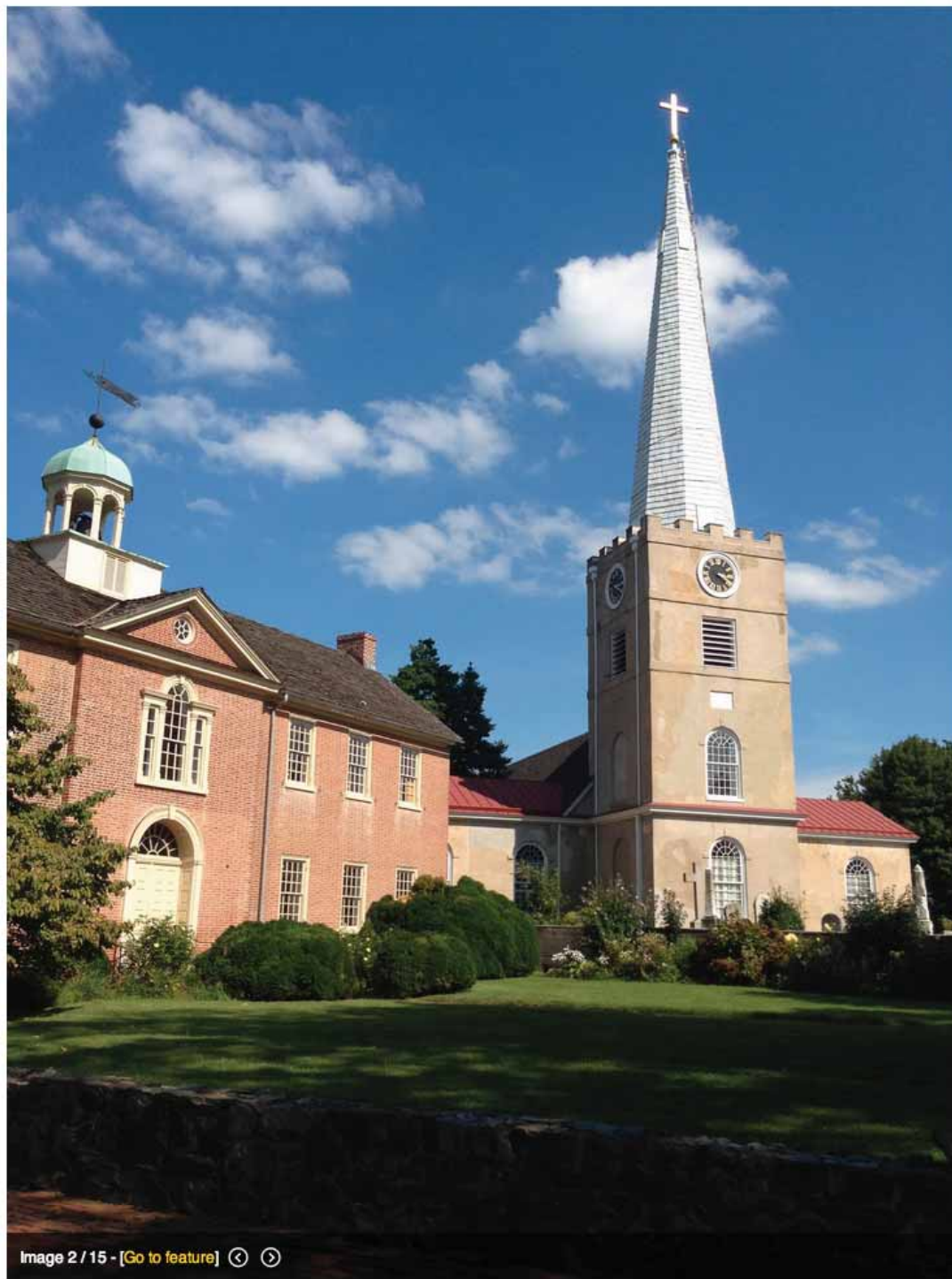
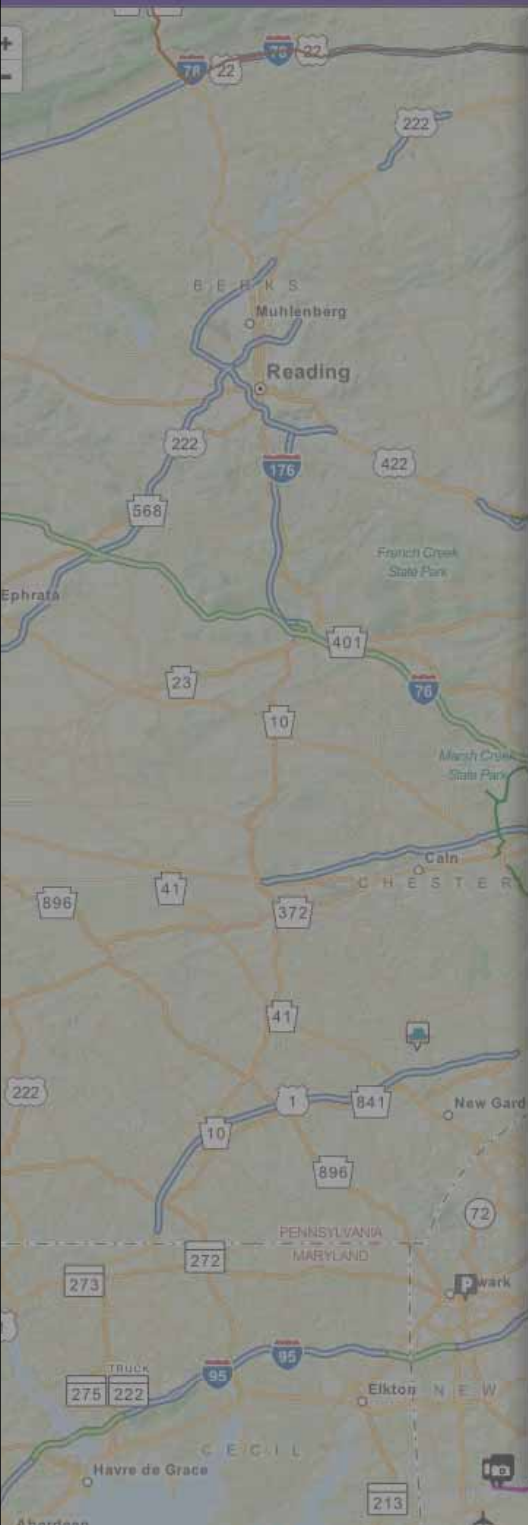
## iPhone &amp; Android



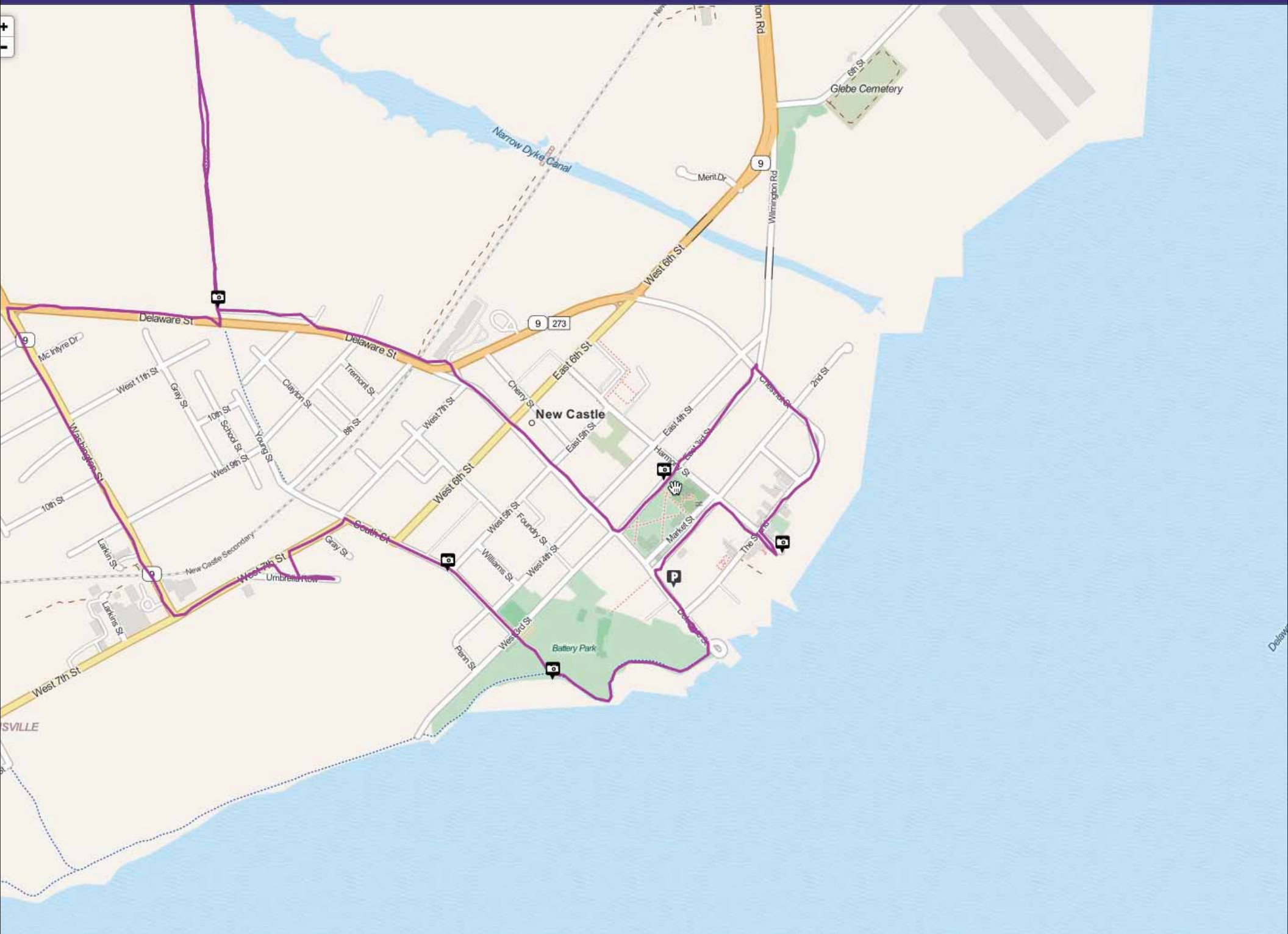


[Photo Stream](#)[Stories](#)[Set Current Story](#)[Find Photo](#)









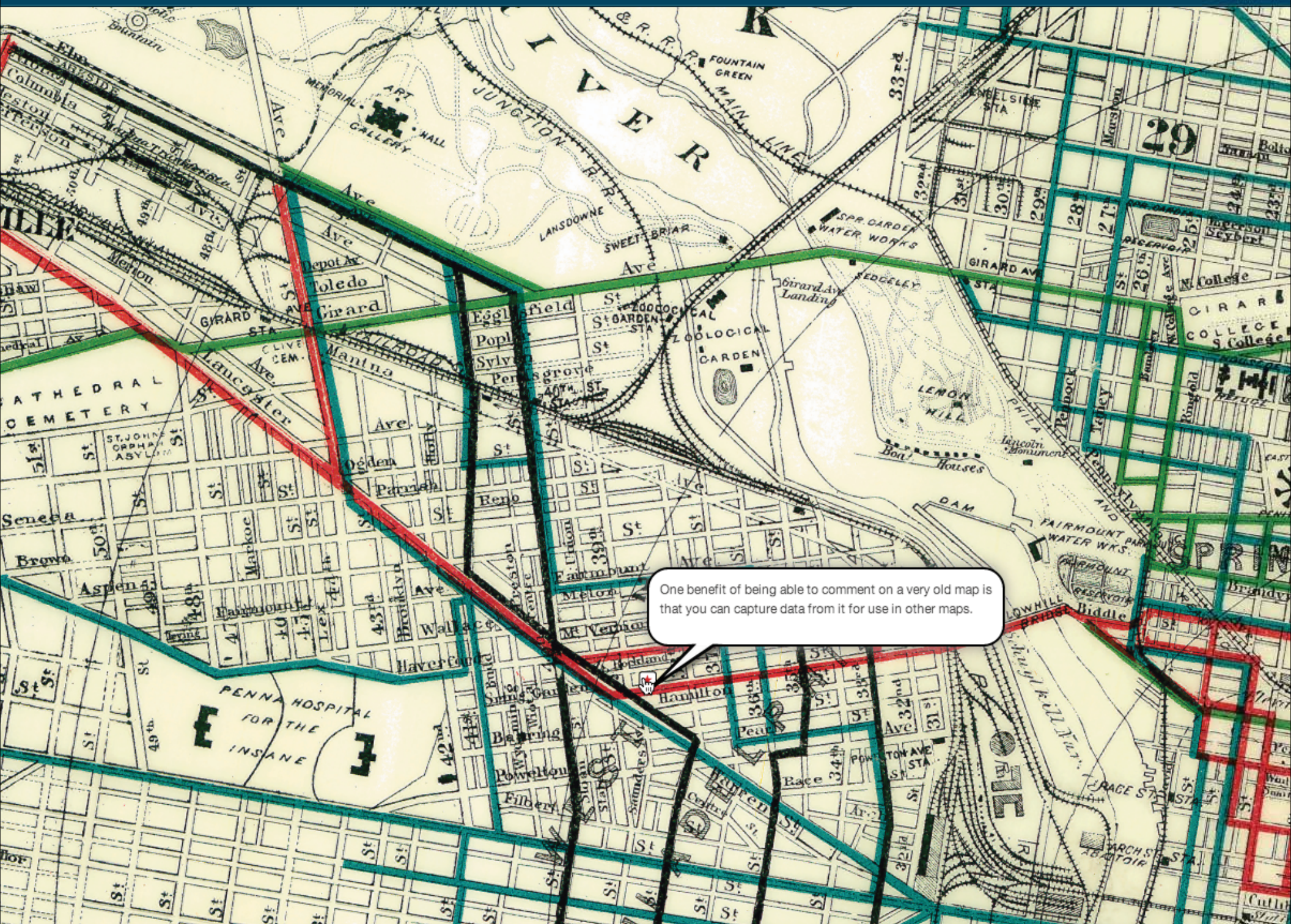


A scenic photograph of a paved path leading towards a body of water. On the left, there are large, leafy trees casting shadows on the path. On the right, a low stone wall separates the path from a sandy and rocky shoreline. The water is calm, and the sky is clear.

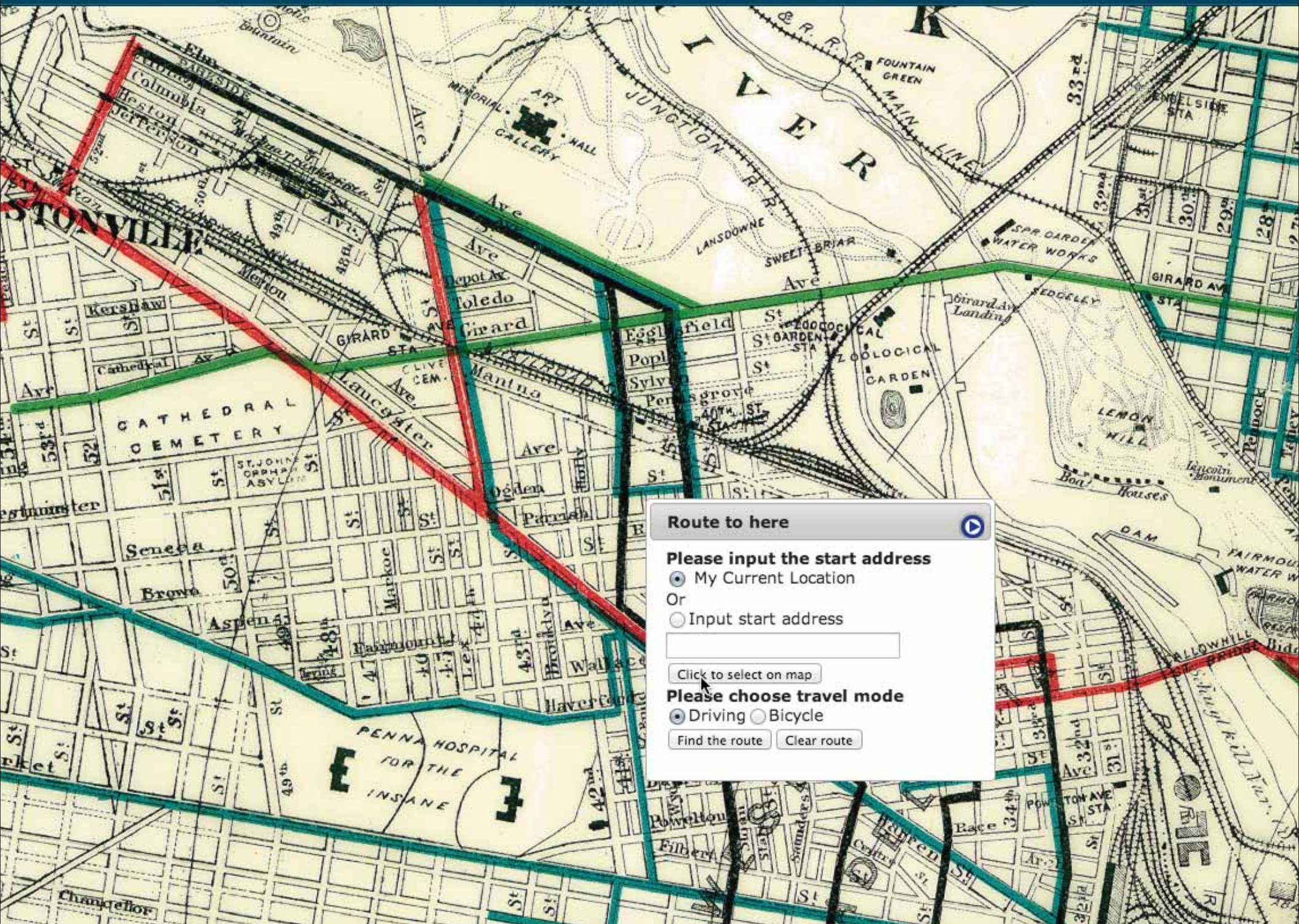
# Custom maps

## Using any base









Route to here



Please input the start address

☒ My Current Location

Or

☐ Input start address

[Click to select on map](#)

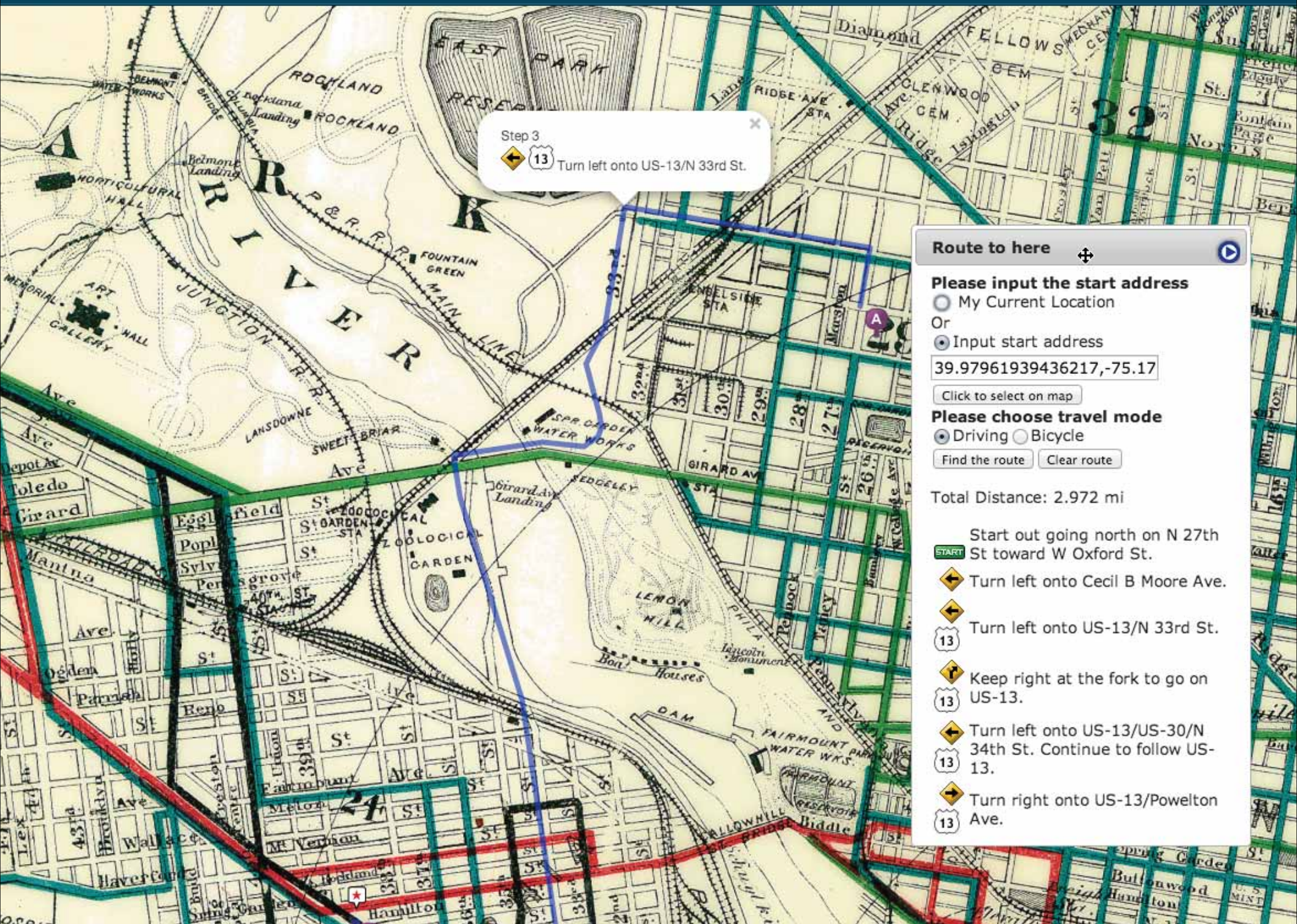
Please choose travel mode

☒ Driving ☐ Bicycle

[Find the route](#)

[Clear route](#)





Step 3



13 Turn left onto US-13/N 33rd St.

Route to here



Please input the start address

☐ My Current Location

Or

☒ Input start address

39.97961939436217,-75.17

[Click to select on map](#)

Please choose travel mode

☒ Driving ☐ Bicycle[Find the route](#)[Clear route](#)

Total Distance: 2.972 mi

Start out going north on N 27th St toward W Oxford St.

START

Turn left onto Cecil B Moore Ave.



Turn left onto US-13/N 33rd St.



Keep right at the fork to go on US-13.



Turn left onto US-13/US-30/N 34th St. Continue to follow US-13.



Turn right onto US-13/Powelton Ave.







**Public input  
For improved facilities**





# Bike Share Feasibility Study

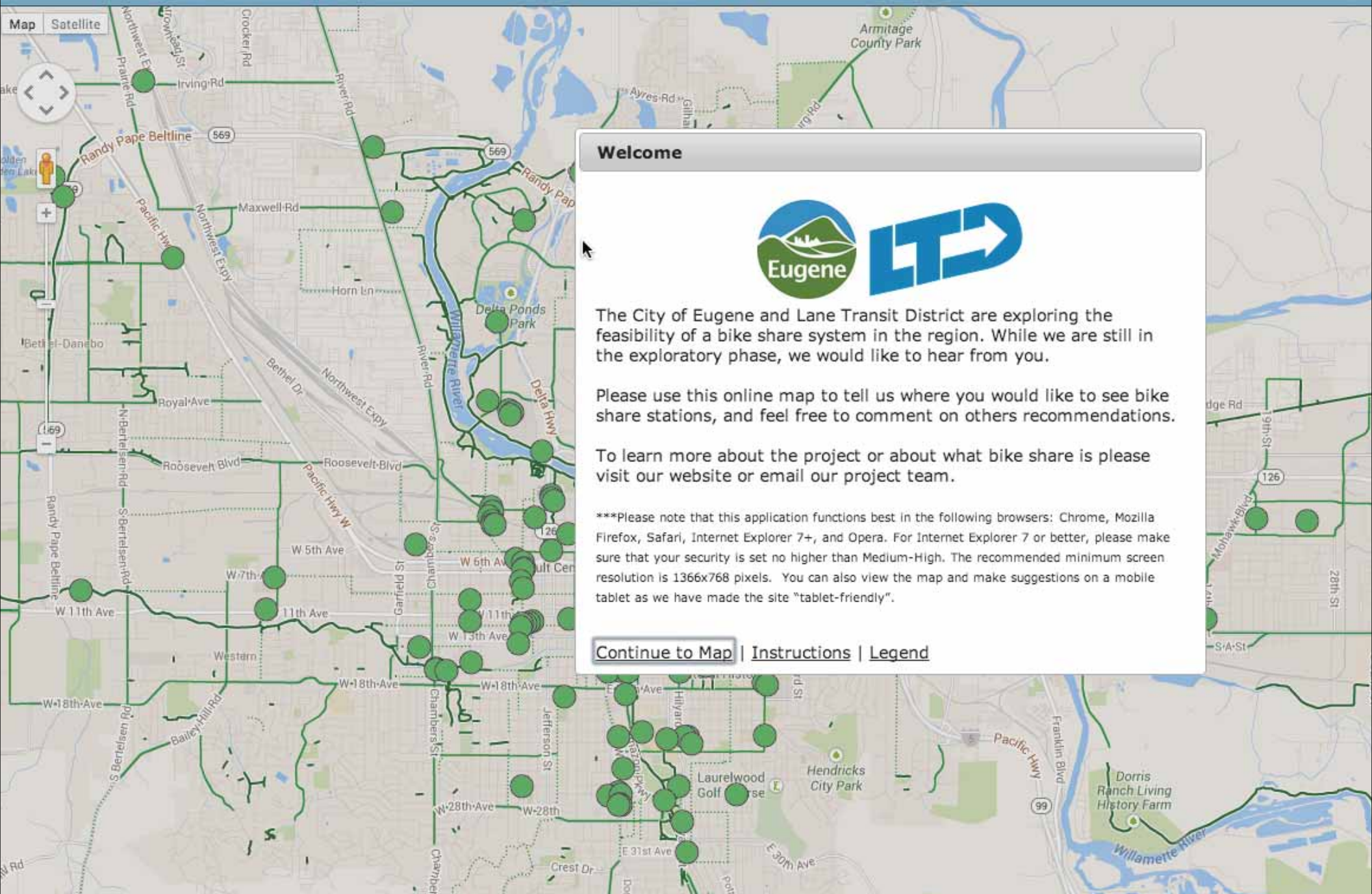
About & Help ▾

[Suggest a Station Location](#)

[I'm Here](#)



Map Satellite



## Welcome



The City of Eugene and Lane Transit District are exploring the feasibility of a bike share system in the region. While we are still in the exploratory phase, we would like to hear from you.

Please use this online map to tell us where you would like to see bike share stations, and feel free to comment on others recommendations.

To learn more about the project or about what bike share is please visit our website or email our project team.

\*\*\*Please note that this application functions best in the following browsers: Chrome, Mozilla Firefox, Safari, Internet Explorer 7+, and Opera. For Internet Explorer 7 or better, please make sure that your security is set no higher than Medium-High. The recommended minimum screen resolution is 1366x768 pixels. You can also view the map and make suggestions on a mobile tablet as we have made the site "tablet-friendly".

[Continue to Map](#) | [Instructions](#) | [Legend](#)





# Hennepin County Bicycle Plan



Existing facilities  
Google bike info

- Trails and paths
- Bike lane
- Bike-friendly road

Route comments

- Route I ride (high-stress)
- Route I ride (low-stress)
- Route I'd ride if improved

Point

- Bar
- Play
- Play
- bike

About & Help

Add new route

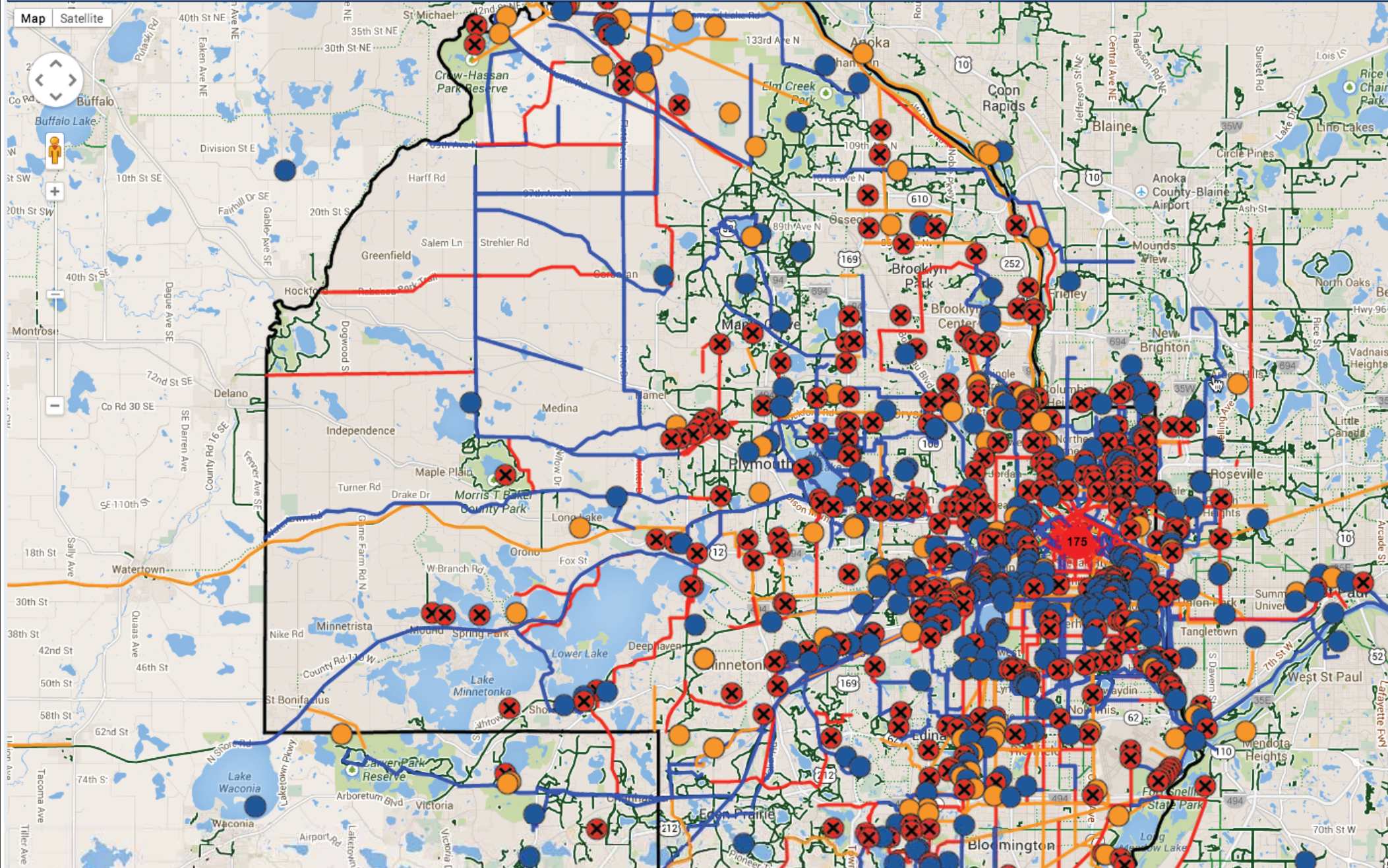
Add new point

Photo Stream

I'm Here



Map Satellite







# Hennepin County Bicycle Plan



Existing facilities  
Google bike info

- Trails and paths
- Bike lane
- Bike-friendly road

Route comments

- Route I ride (high-stress)
- Route I ride (low-stress)
- Route I'd ride if improved

Point

- Barrier
- Plan
- Plan

About & Help

Add new route

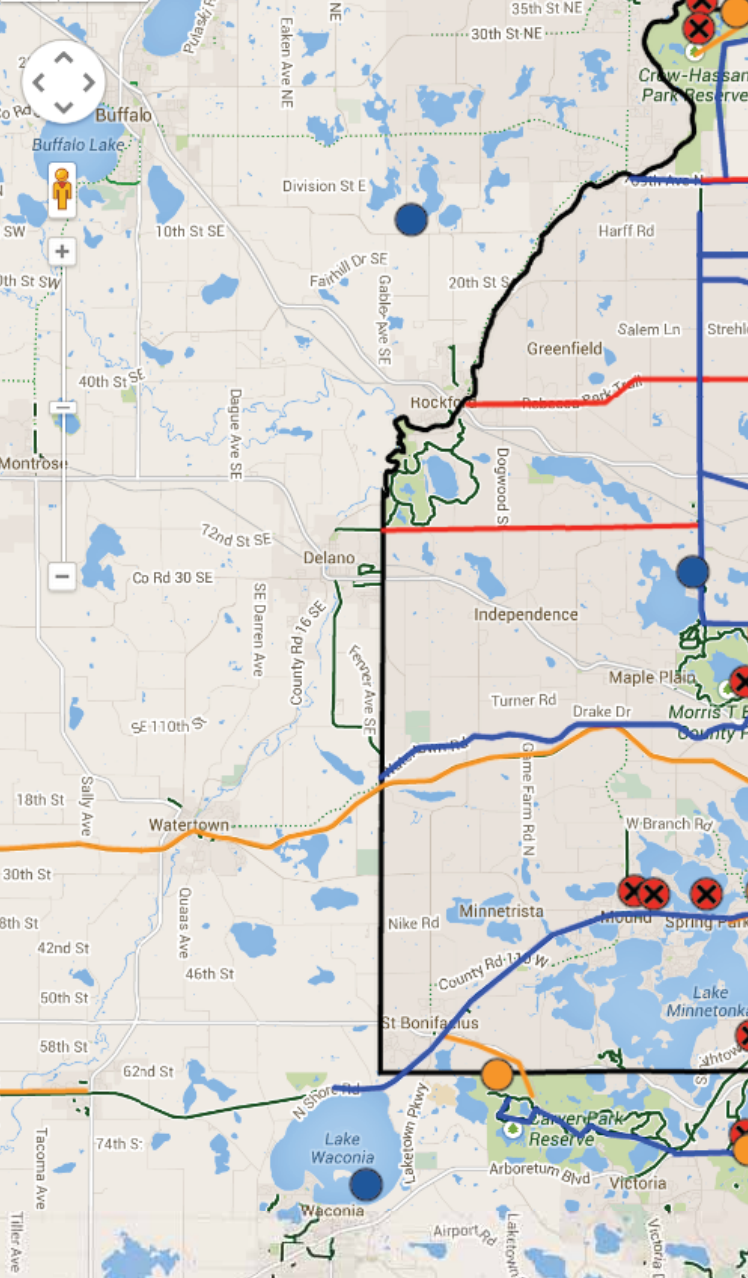
Add new point

Photo Stream

I'm Here



Map Satellite



## Add Comment

Description: Barrier to biking

Initial comment:

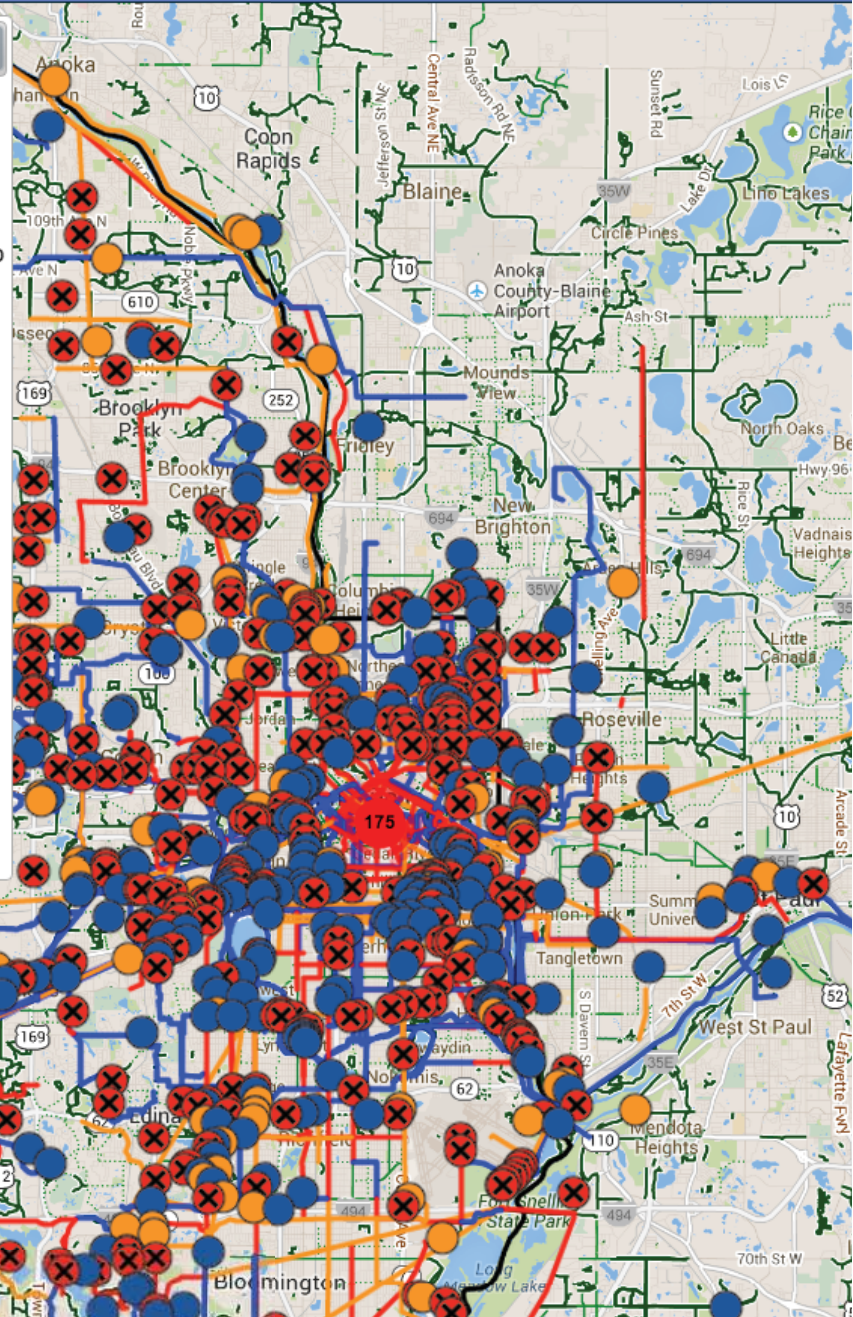
What barrier exists here?\*

- ☐ Narrow bridge
- ☐ Intersection without signal
- ☐ Intersection without bike detection
- ☐ Poor maintenance
- ☐ Highway interchange
- ☐ No bicycle access/connection
- ☐ Dangerous intersection
- ☐ Other (fill in below)

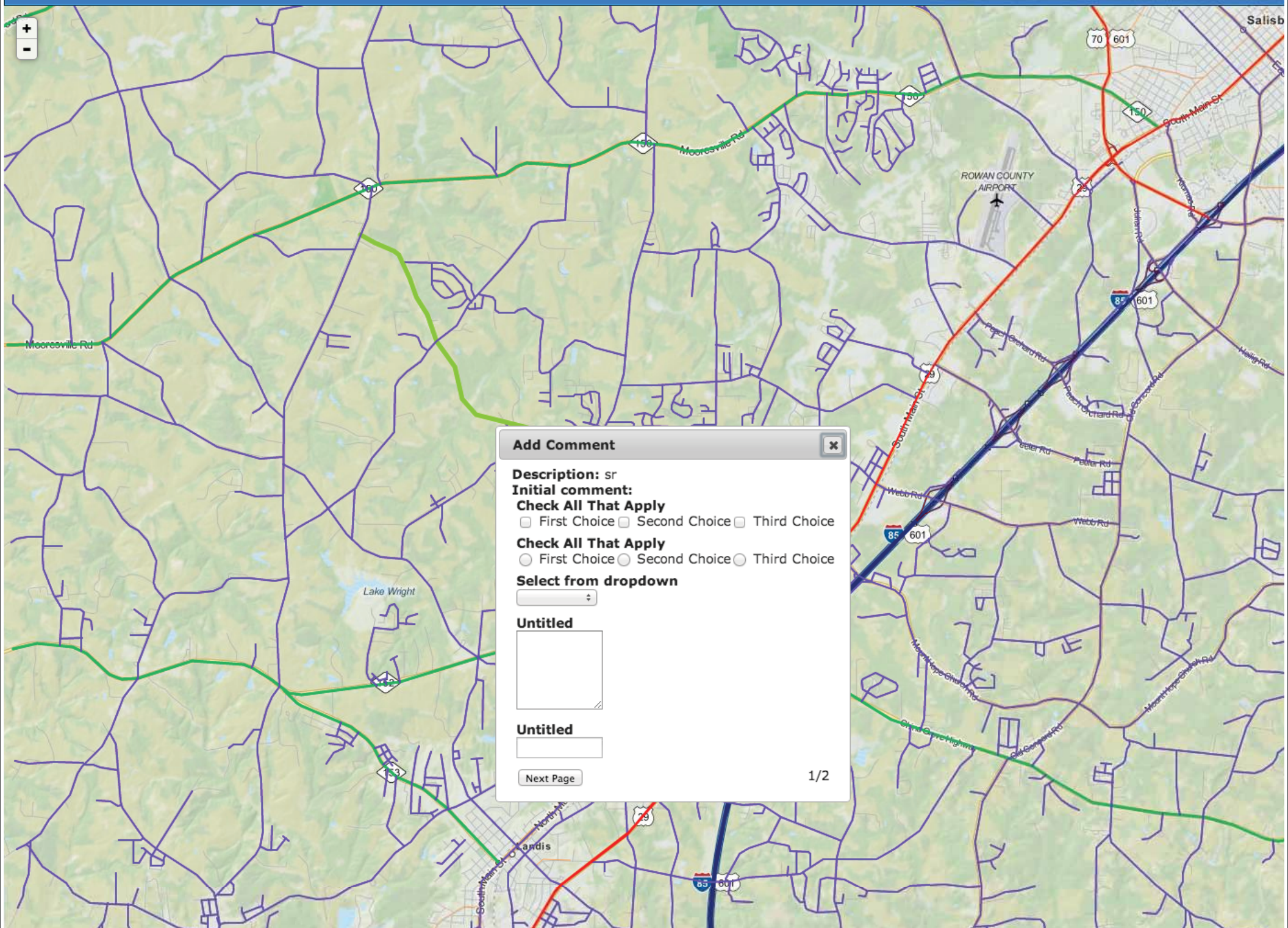
Other

Comments

Submit







### Add Comment

Description: sr

Initial comment:

Check All That Apply

☐ First Choice ☐ Second Choice ☐ Third Choice

Check All That Apply

☐ First Choice ☐ Second Choice ☐ Third Choice

Select from dropdown

Untitled

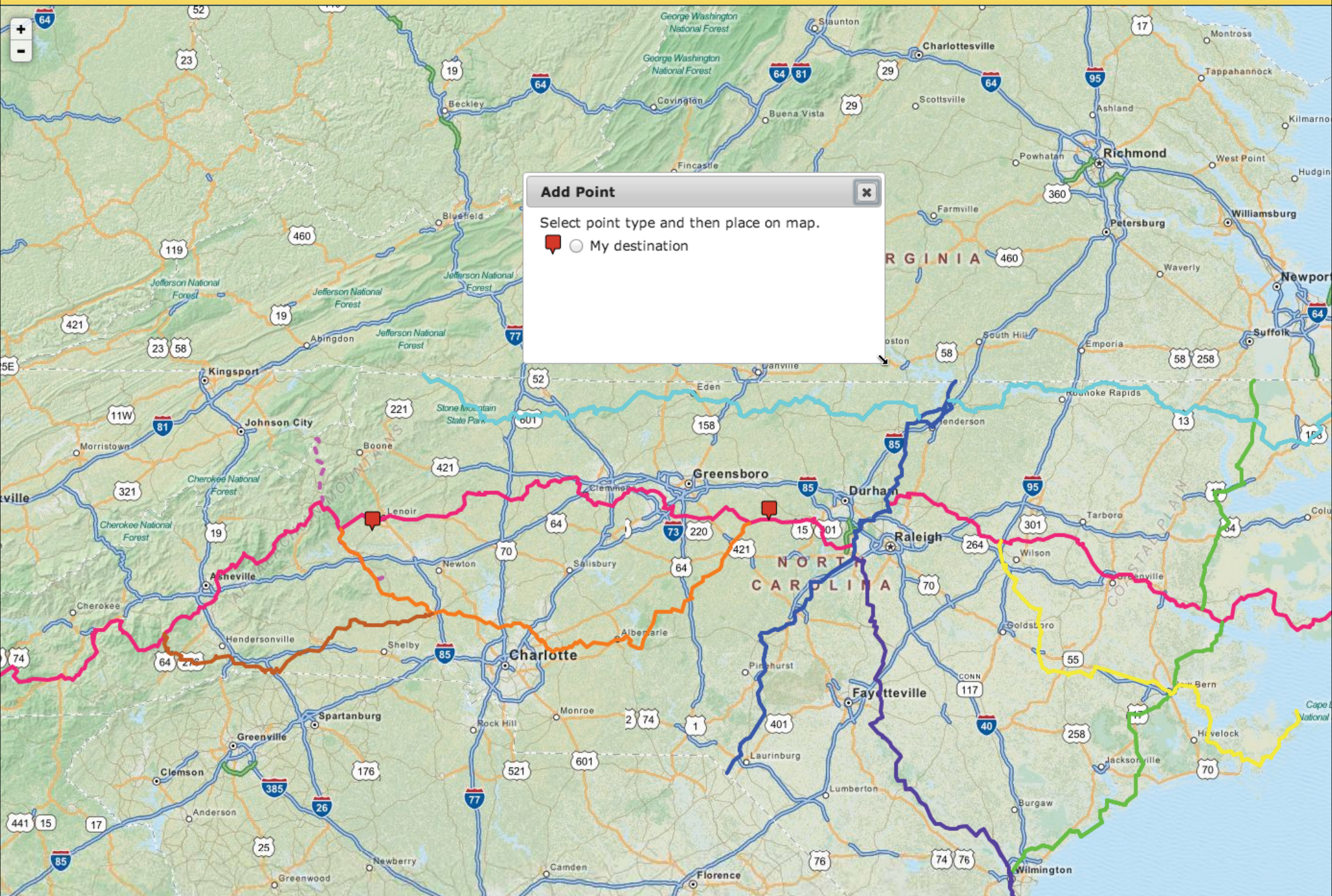
Untitled

[Next Page](#)

1/2



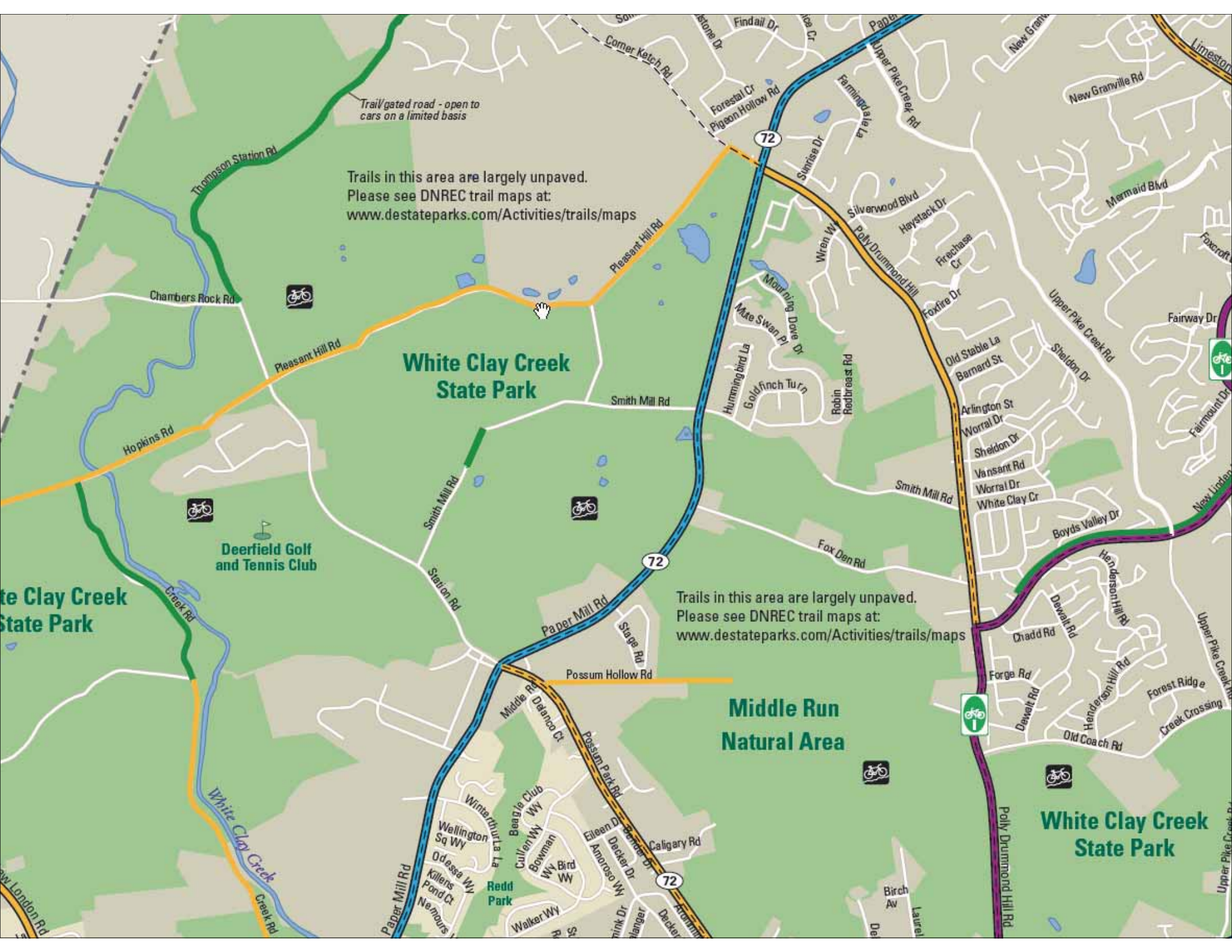
# North Carolina Bike Routes











Trails in this area are largely unpaved.  
Please see DNREC trail maps at:  
[www.destateparks.com/Activities/trails/maps](http://www.destateparks.com/Activities/trails/maps)

Trails in this area are largely unpaved.  
Please see DNREC trail maps at:  
[www.destateparks.com/Activities/trails/maps](http://www.destateparks.com/Activities/trails/maps)

### White Clay Creek State Park

### Middle Run Natural Area

### White Clay Creek State Park

### White Clay Creek State Park





**Share your  
perspective  
on a map.**