

Recreational Trail Investment Planning



Delaware State Parks
We're Saving a Place for You



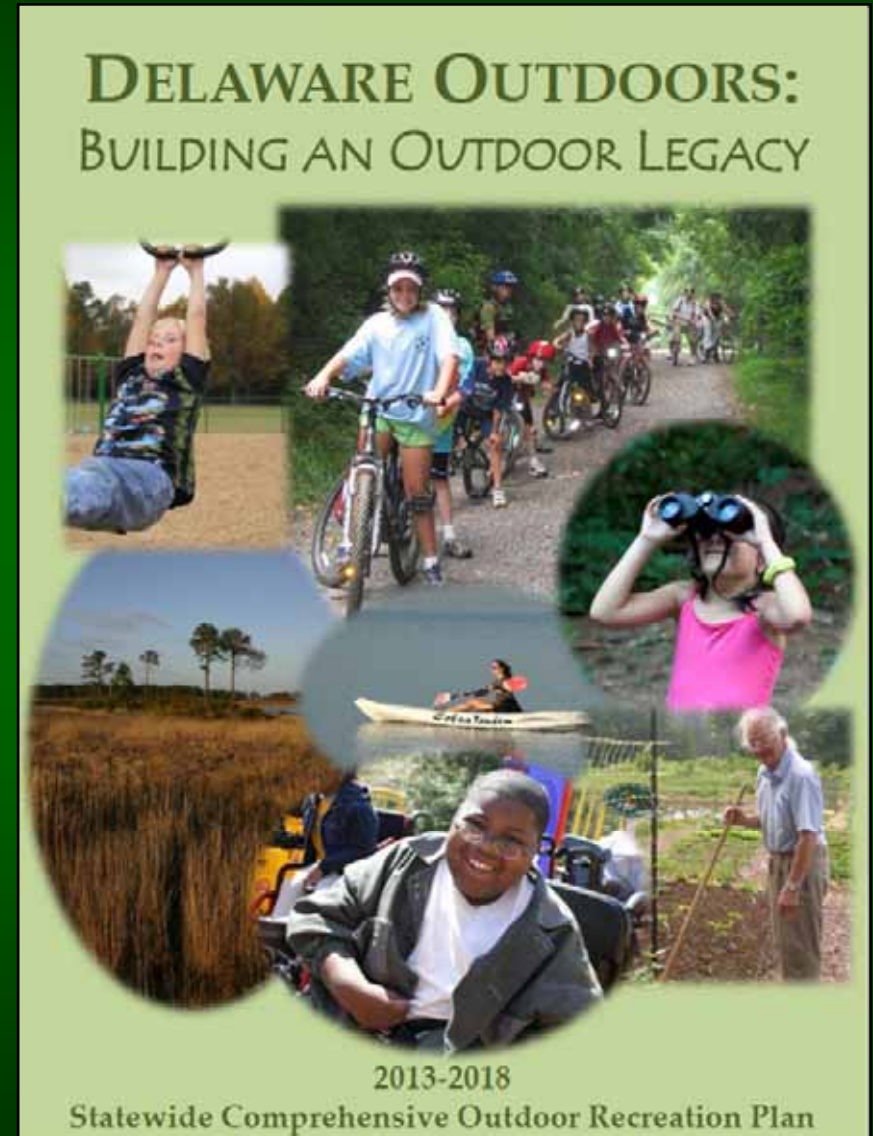
2014 Delaware Heels &
Wheels Summit



- Identifies public recreation use patterns and preferences as well as the public's landscape perception.
- Analyzes the supply and demand of outdoor recreation throughout the state
- Directs future recreational investments

Production Timeline

- ❖ Outdoor Recreation Participation Survey-
Summer 2011
- ❖ Technical Advisory Committee-
2011-2012
- ❖ Draft Report- TAC and Internal Review-
Fall 2012
- ❖ Public Comment- *December 2012-
January 2013*
- ❖ Final Document for Governor's Signature-
January 2013
- ❖ Final Approval from National Park Service-
May 2013



Components of the SCORP

Demographics- Where are the people?

Supply- What facilities already exist?

Demand- How do we know what facilities are needed?

Distribution- Are the facilities in the same areas as the people?
Where should new facilities be placed?

Outdoor Recreation Issues & Recommendations-

Identification of recreation concerns with recommended actions to enhance outdoor recreation in Delaware





SCORP Highlights

1. Improving Public Health
2. Getting Children Outdoors
- 3. Statewide Trails and Pathways Initiative**
4. Partnerships for Conservation, Recreation & Tourism
5. Protecting Lands for Conservation and Recreation
6. Accessible Recreation

Statewide Trails & Pathways Initiative

Goal #1: Make Delaware walkable and bikeable by creating a premier interconnected network of multi-use bicycle and pedestrian trails and pathways.

Goal #2: Design, construct and maintain a sustainable network of trails and pathways

RECOMMENDATIONS	IMPLEMENTERS	AGO
1. Increase the system of interconnected trails and pathways by extending existing trail hubs within municipalities and state parks.	DNREC, DelDot, local parks and recreation departments, County and Municipal planners	
2. Develop concept plans with focus on identifying new trail and pathway corridors that extend existing trails into county regions.	DelDOT, DNREC, county partners, trail users, bike commuters	
3. Allocate a steady and reliable funding stream for trails and pathways that builds on and extends the existing network.	DNREC, DelDot, local parks and recreation departments, County and local officials, trail advocates	
4. Coordinate planning efforts to connect neighborhoods with places of work, schools, businesses, park and other community facilities.	DNREC, DelDot, Office of State Planning & Coordination, County and Municipal planners	

Statewide Trails and Pathways Initiative

Goal #1:

Make Delaware walkable and bikeable by creating a premier interconnected network of multi-use bicycle and pedestrian trails and pathways.

Goal #2:

Design, construct and maintain a sustainable network of trails and pathways.

14 Recommendations



Fourteen Recommendations

Support Increase Mileage of Trails

- Increase the system of interconnected trails and pathways by extending existing trail hubs within municipalities.*
- Develop concept plans that extend existing trails into county regions.



Funding

- Allocate a steady and reliable funding stream for trails and pathways.
- Advocate and identify funding sources to conduct local walkability and bikability analyses.



Trail Planning

- Coordinate planning efforts to connect neighborhoods with places of work, schools, businesses, parks and other community facilities.*
- Identify gaps in trail and pathway systems to prioritize critical community connections.*
- Identify needed land and support the development of future trail extensions and connections.*
- Conduct a detailed spatial analysis to determine geographical representation of trail, pathway and sidewalk related needs.



Trail Use Data and Research

- Conduct trail volume and use surveys to better understand and enhance trail use.
- Promote and support bicycle and shared-use trail safety campaign.



Trail Design and Construction

- Develop a unified statewide trail classification and marking system.
- Identify unsustainable and inaccessible trail sections.
- Adopt universal sustainability and trail maintenance standards for design & construction
- Share trail standards and design knowledge with local agencies and volunteer organizations.



Using the SCORP and existing data to inform decisions...

Demographics- Where are the people?

Demand- How do we know what facilities are needed?

Supply- What facilities already exist?

Distribution- Are the facilities in the same areas as the people?
Where should new facilities be placed?



Delaware's **O**utdoor **R**ecreation **I**nventory **ORI**

Spatial and tabular data set of protected land
and public parks

Initially developed in 1993 and continually
updated

Intensive assessment of all publicly accessible
lands and recreation amenities- 2011



Tabular Data & Spatial Coverage- *Tying it all Together*



Profile: Talley Day Park New Castle County

Alias: Talley Day

Type: Park
Public

Ownership: Fee Simple

Parcel #: 0609100154

Features:

Bark Parks - 1
Baseball Fields - 2
Basketball Courts - 3
Game Courts - 2
Picnic Pavilions - 1
Playgrounds - 1
Soccer Fields - 2
Swings - 4
Tennis Courts - 1
Tot-Lots - 1

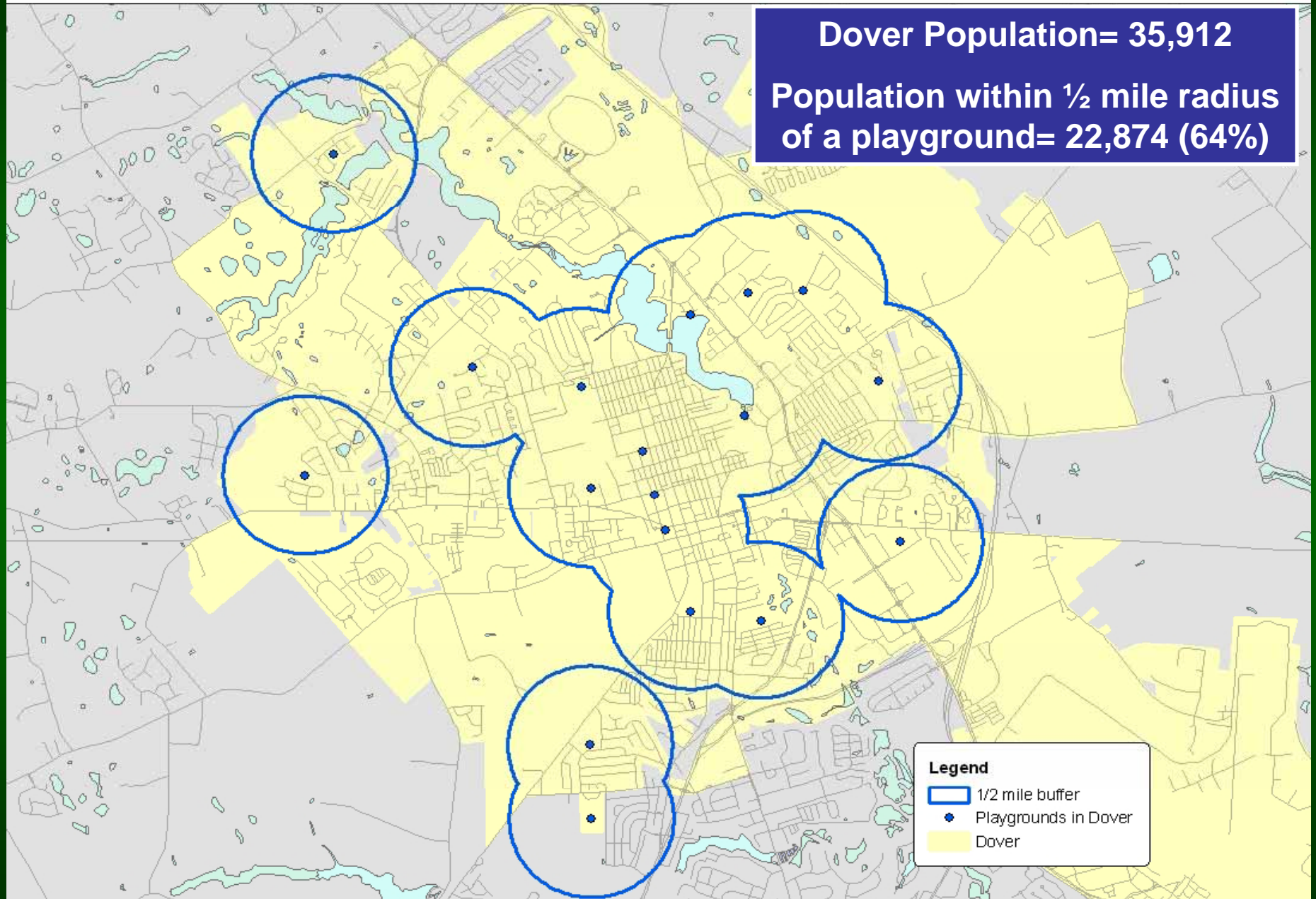
Amenities:

Bicycle Racks
Free Parking
Multi-Use Path
Outdoor Grills
Recycling Center
Restrooms
Water Fountains

City of Dover- Playgrounds

Dover Population= 35,912

Population within ½ mile radius
of a playground= 22,874 (64%)



James Hall Trail City of Newark

2,553 people live within ¼ mile of an access point to the James Hall Trail




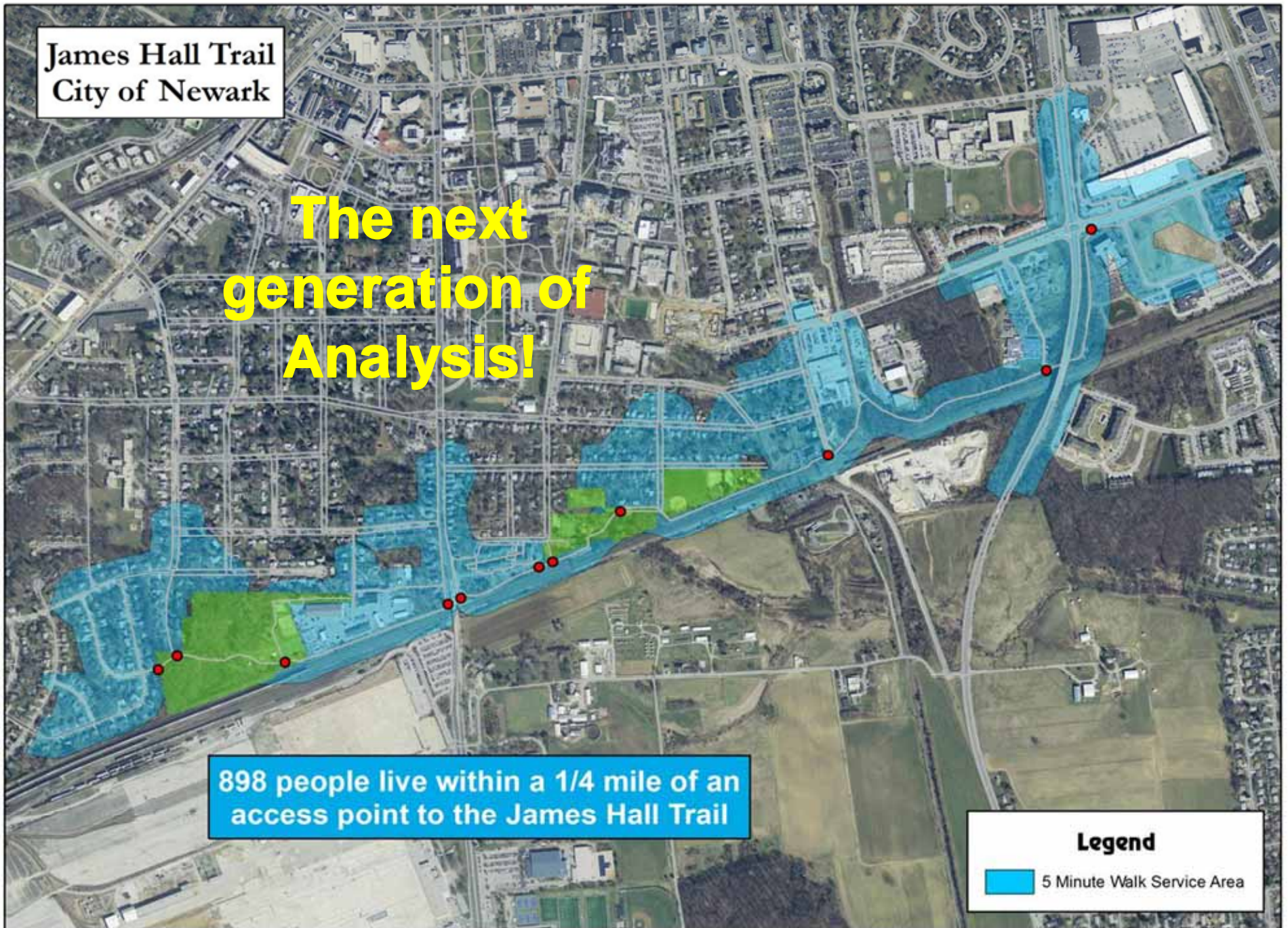
James Hall Trail
City of Newark

The next
generation of
Analysis!

898 people live within a 1/4 mile of an
access point to the James Hall Trail

Legend

 5 Minute Walk Service Area



Recreational Investment Planning

The Power of GIS Modeling

- Models developed by Azavea
- Use ArcGIS software to estimate “Service Areas” for Recreational Facilities
- Identify the recreational “Deserts”
- Locate the best location for new facilities



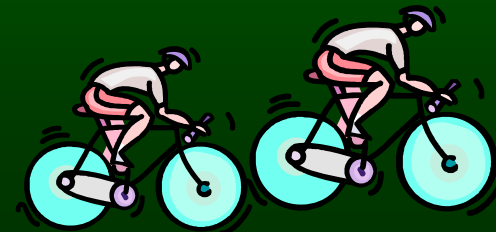
Service Area Models

- The Service Area Models use ArcGIS with the Spatial Analyst and Network Analyst extensions.
- Models look at actual travel networks for bicyclist and pedestrians.
- **Travel Networks include**
 - Neighborhood streets 25 mph without sidewalks
 - Roads with sidewalks or pedestrian facilities
 - Multi-use trails and pathways
 - Share the road lanes (*bicycle network only*)
- **Models ran for two modes of travel**
 - Walking – average walking pace of 3.0 mph
 - Bicycling – average riding pace of 8.5 mph
- Population Estimates and Housing Unit numbers are based on the 2010 U.S. Census Data.

Service Area Models

Advantages

- More accurate estimates of how people are distributed within census blocks
- Uses actual travel networks
- Can model different modes of travel
- Provides better estimates of the number of people served by a facility



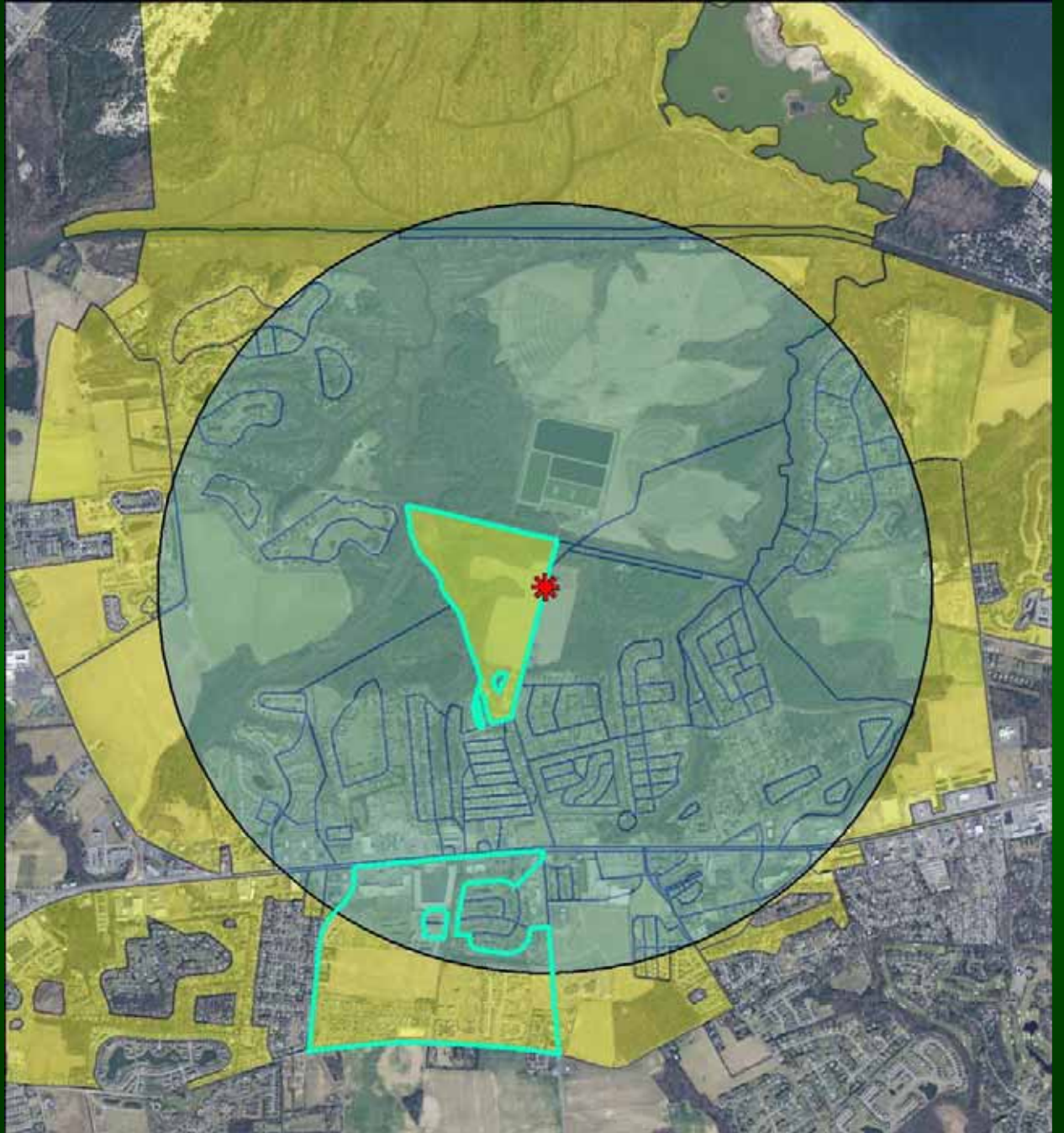
How Do We Know Who to Include

The Old Method

- Percent Area Method

The New Method

- Population Interpolation

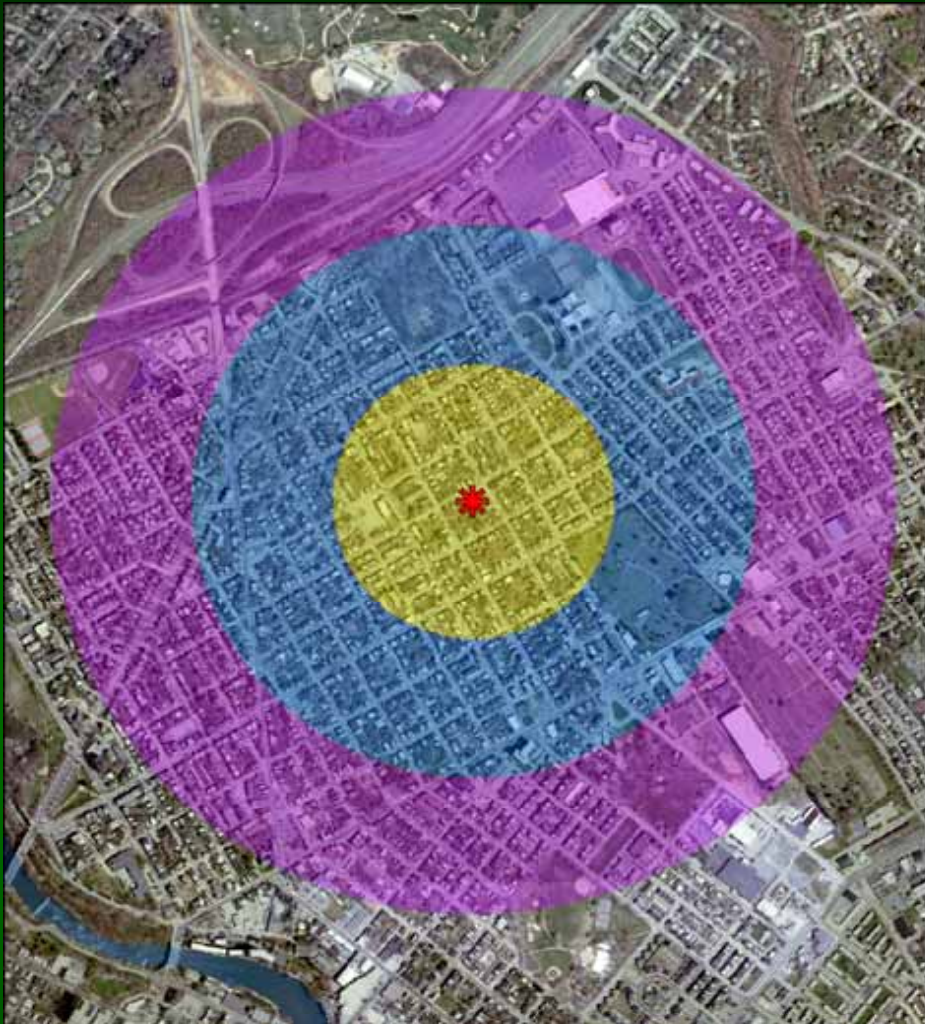


Where the People Really Live

- Better estimates of where people really reside within a census block
- The model distributes the population within the residential areas of the census block
- Factors in the density of the road network



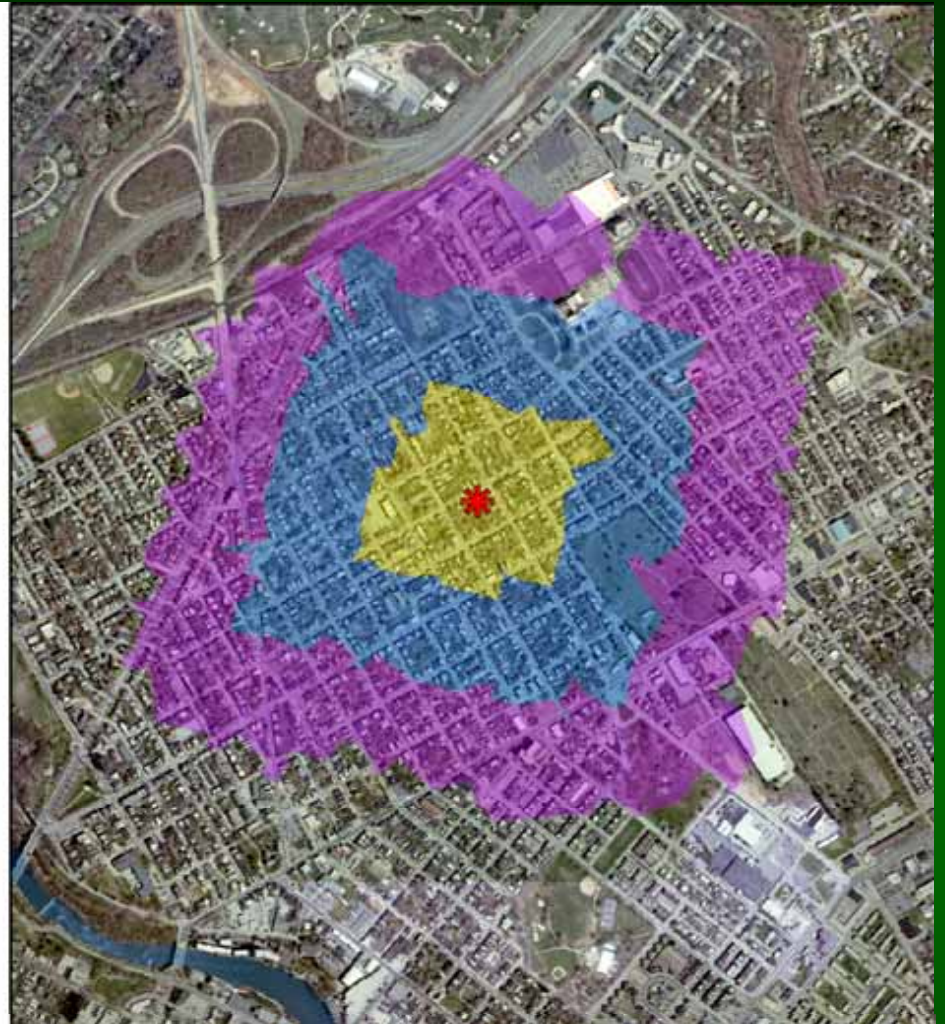




Buffer Analysis

Distance covered at 2.5 mph

Buffer	People Served
5 Minute Radius	2,533
10 Minute Radius	8,289
15 Minute Radius	15,148



Walkable Route Analysis

2.5 mph walking pace

Walk Time	People Served
5 Minute	1,355
10 Minute	5,542
15 Minute	10,023

City of Newark Skate Park Service Areas

White Clay Creek
State Park

Norma Handloff
Park

Newark

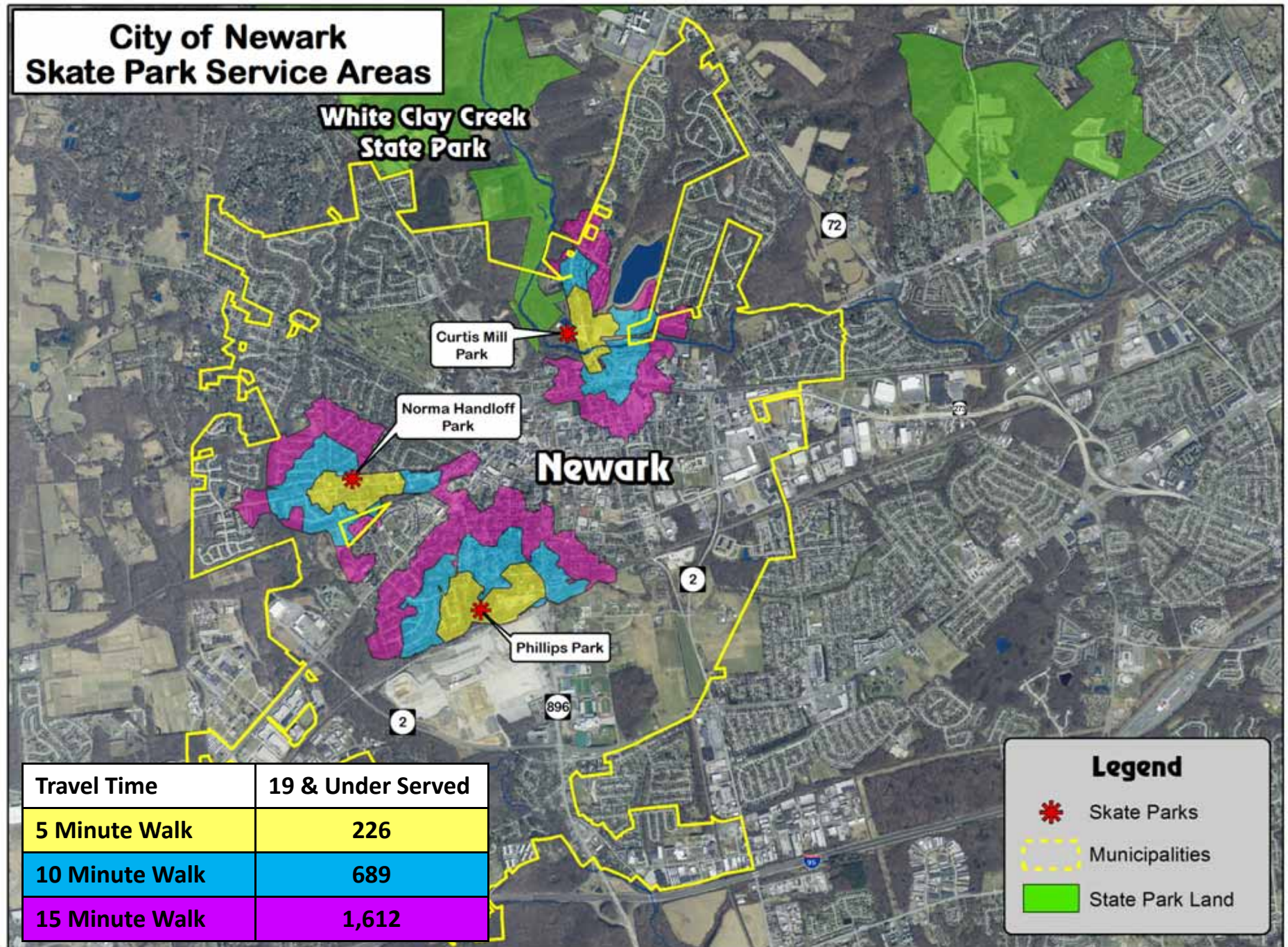
Phillips Park

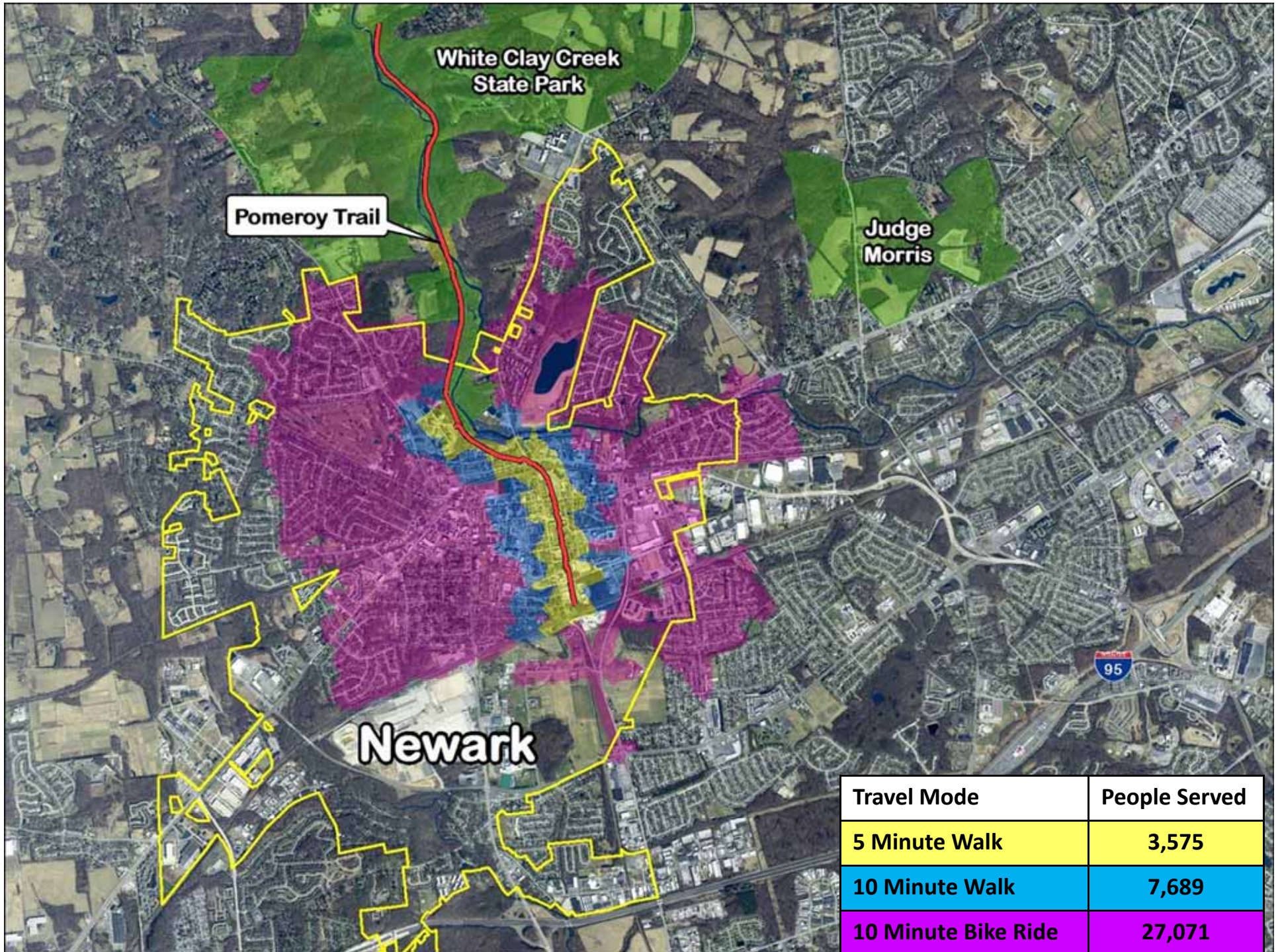
Legend

-  Skate Parks
-  Municipalities
-  State Park Land

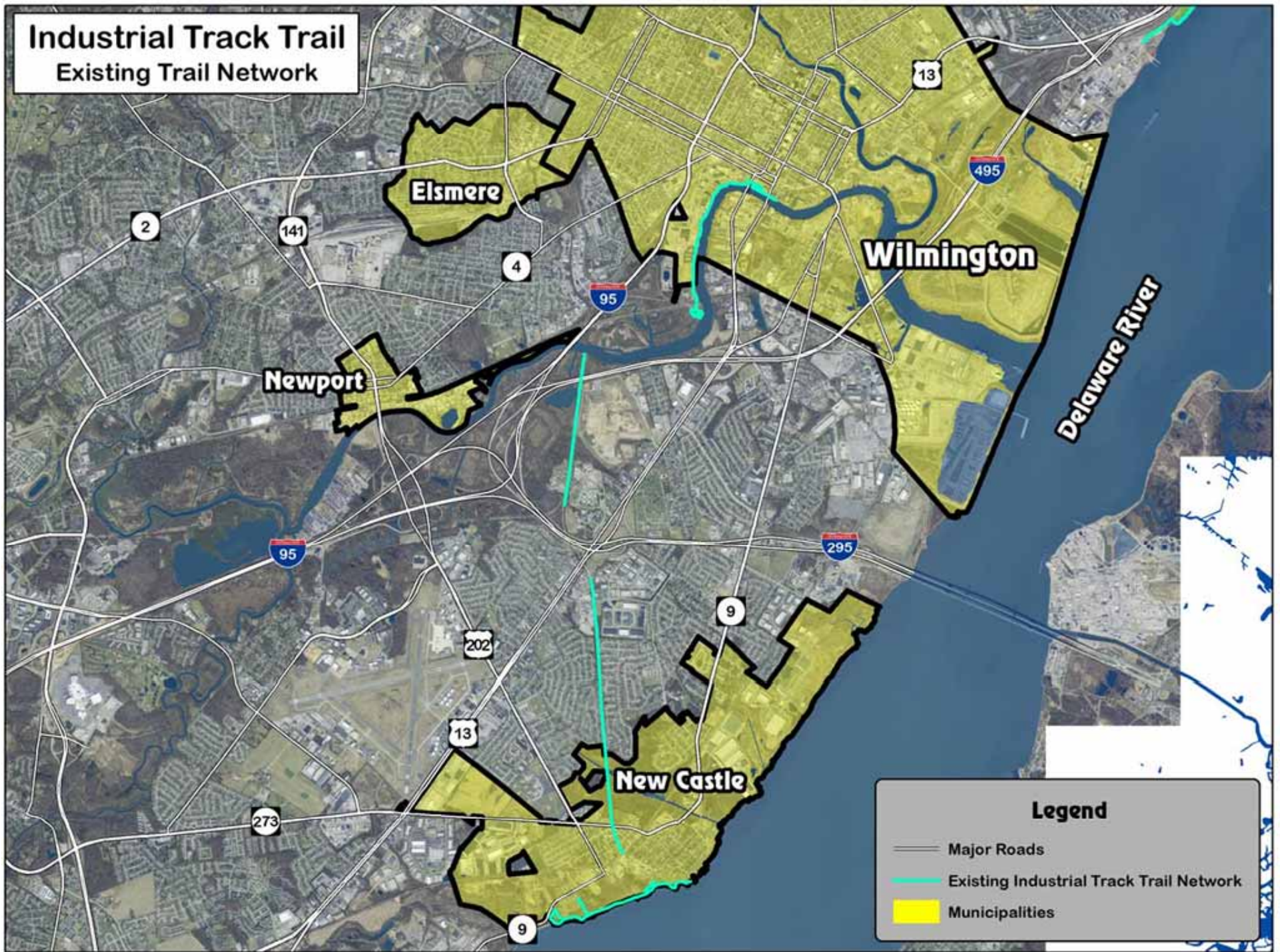
Travel Time	19 & Under Served
5 Minute Walk	202
10 Minute Walk	610
15 Minute Walk	1,426

City of Newark Skate Park Service Areas

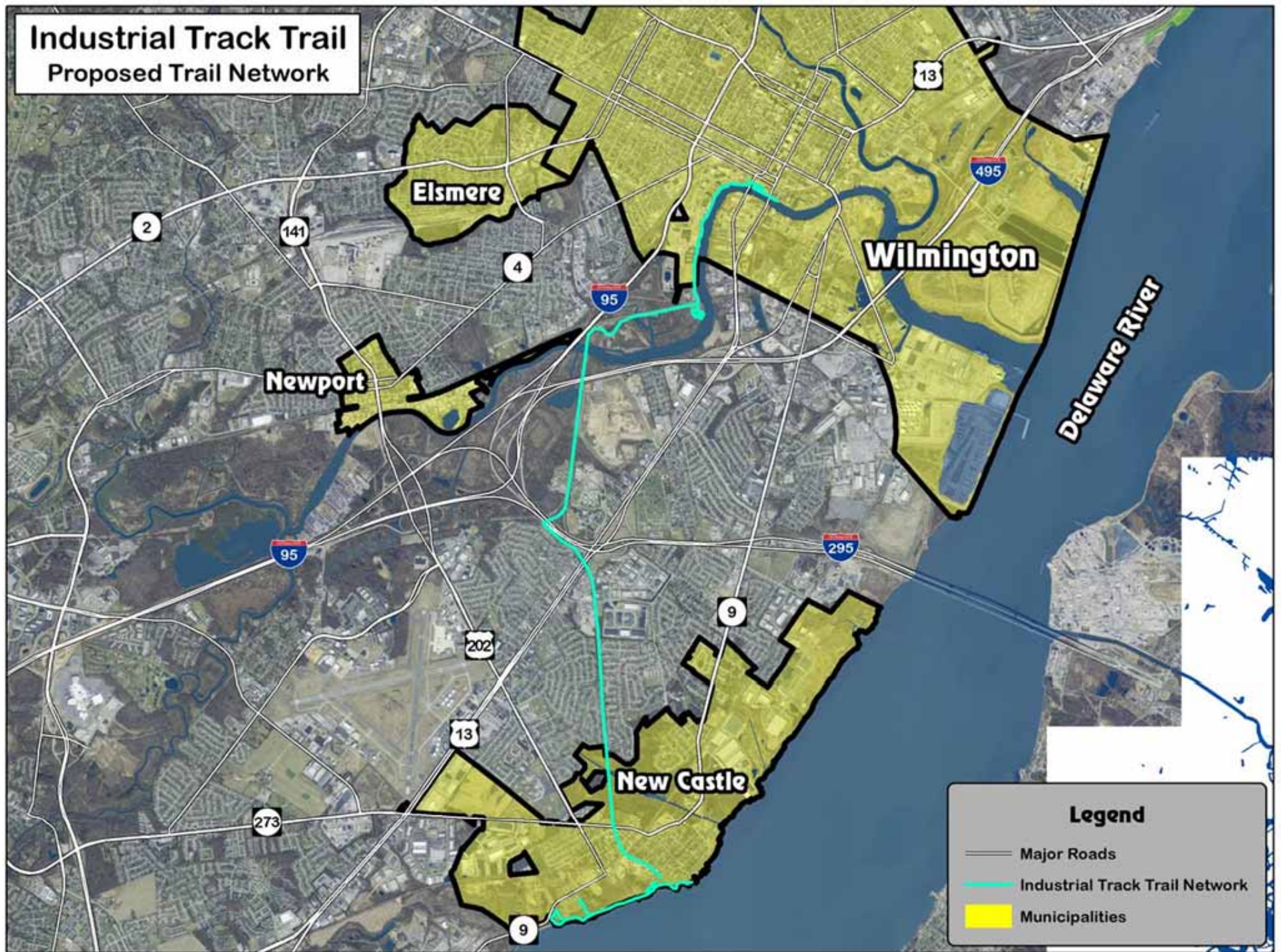




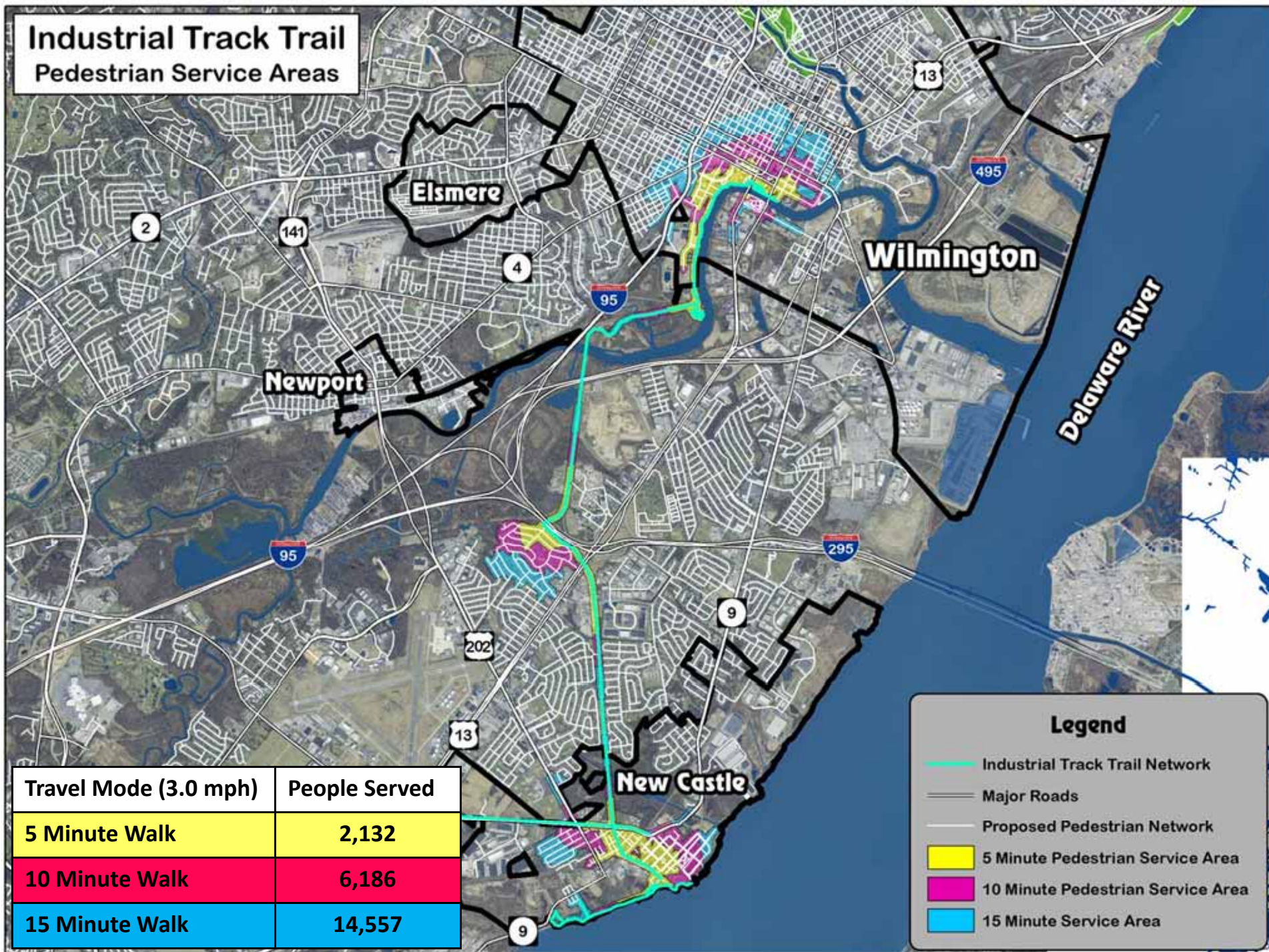
Industrial Track Trail Existing Trail Network



Industrial Track Trail Proposed Trail Network



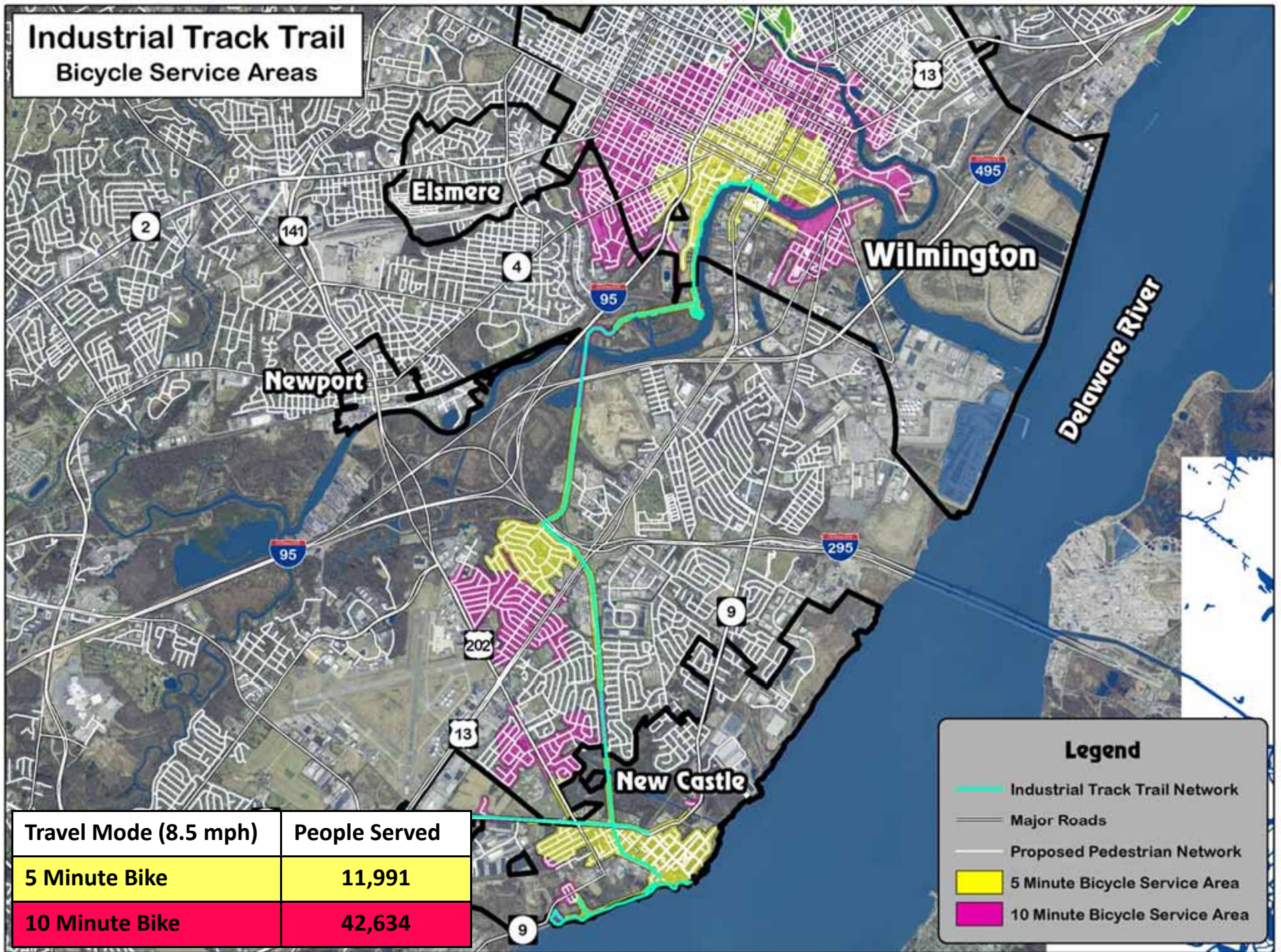
Industrial Track Trail Pedestrian Service Areas



Legend

- Industrial Track Trail Network
- Major Roads
- Proposed Pedestrian Network
- 5 Minute Pedestrian Service Area
- 10 Minute Pedestrian Service Area
- 15 Minute Service Area

Industrial Track Trail Bicycle Service Areas

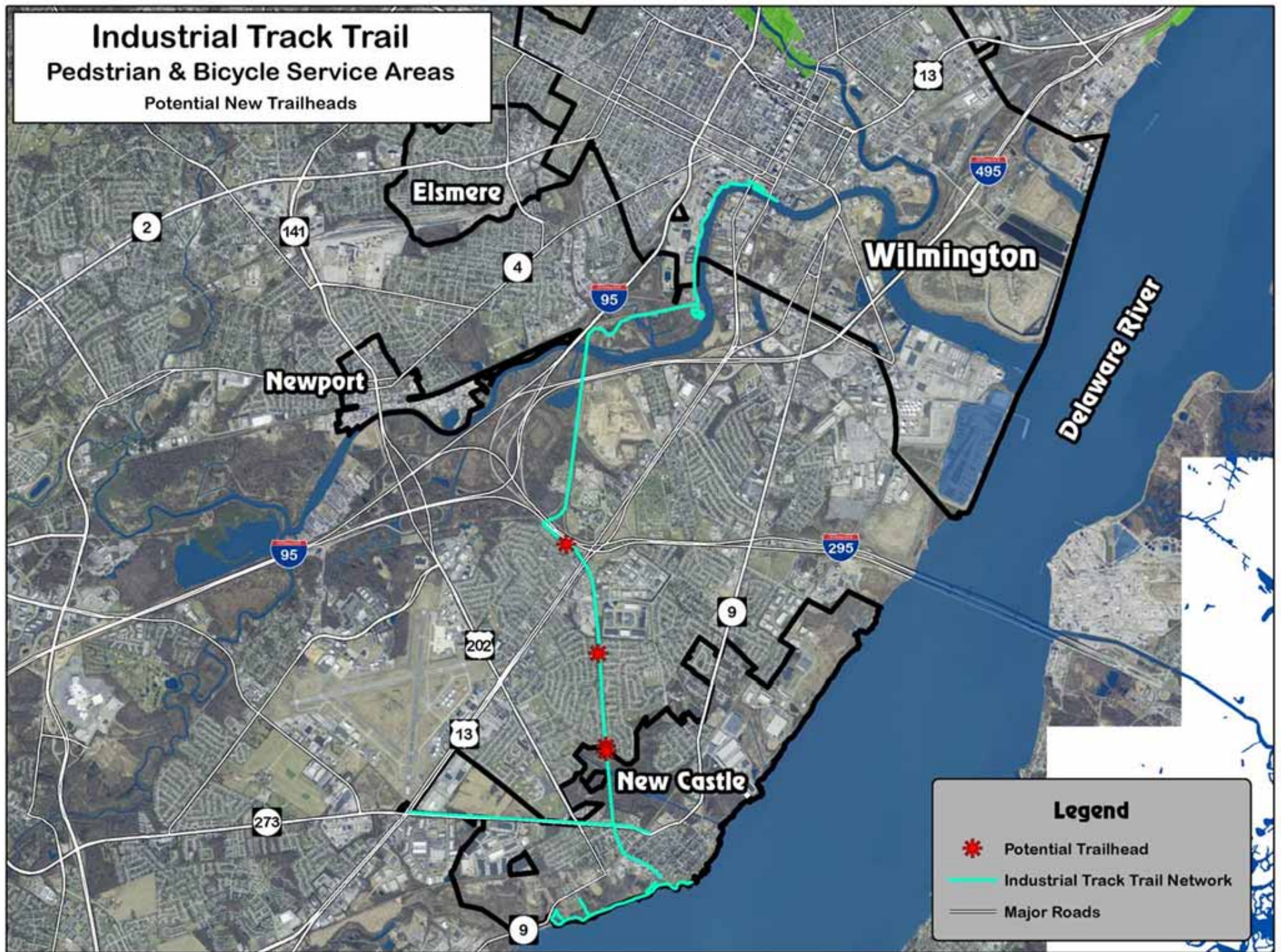


Legend

- Industrial Track Trail Network
- Major Roads
- Proposed Pedestrian Network
- 5 Minute Bicycle Service Area
- 10 Minute Bicycle Service Area

Travel Mode (8.5 mph)	People Served
5 Minute Bike	11,991
10 Minute Bike	42,634

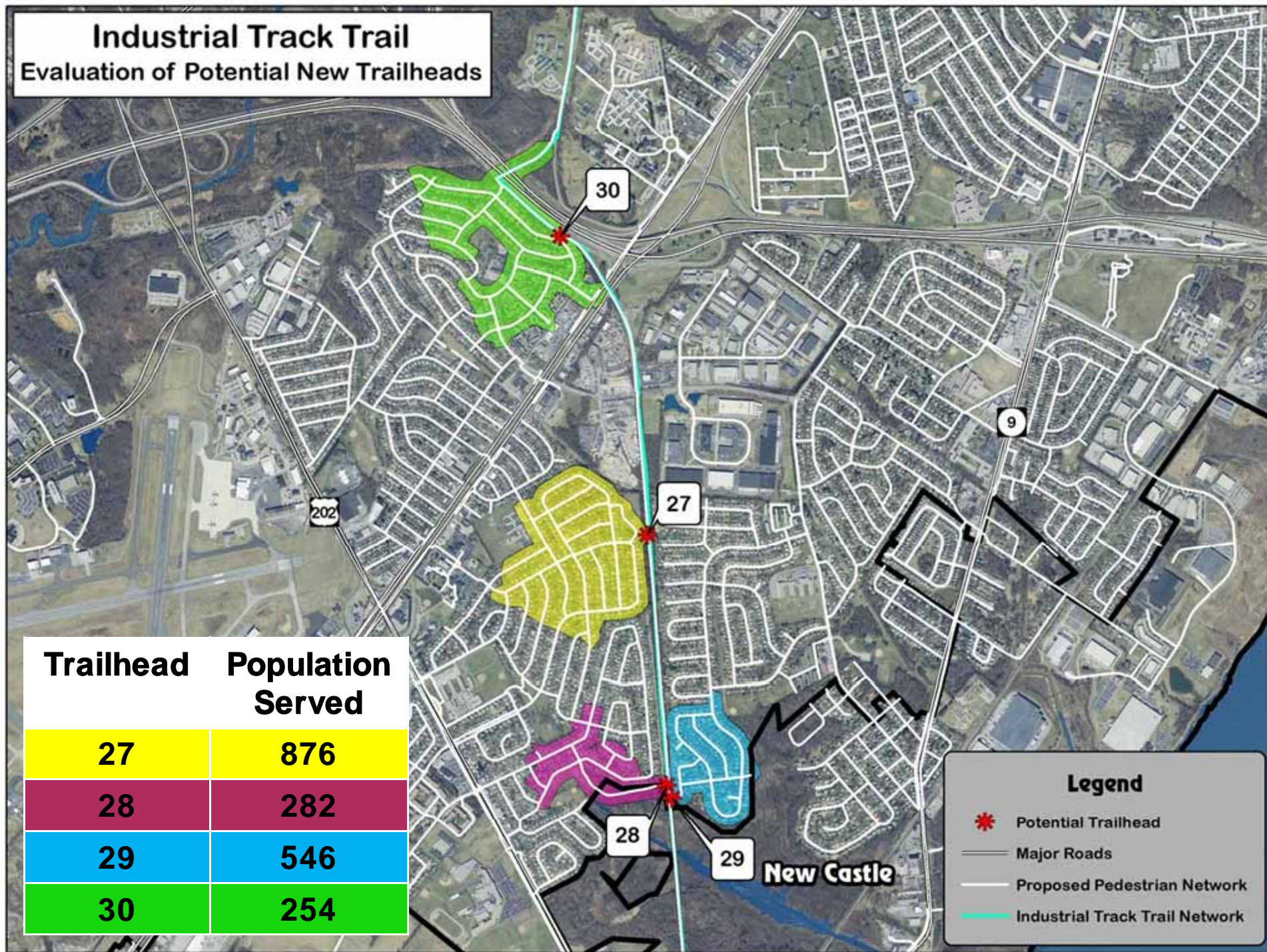
Industrial Track Trail
Pedstrian & Bicycle Service Areas
Potential New Trailheads



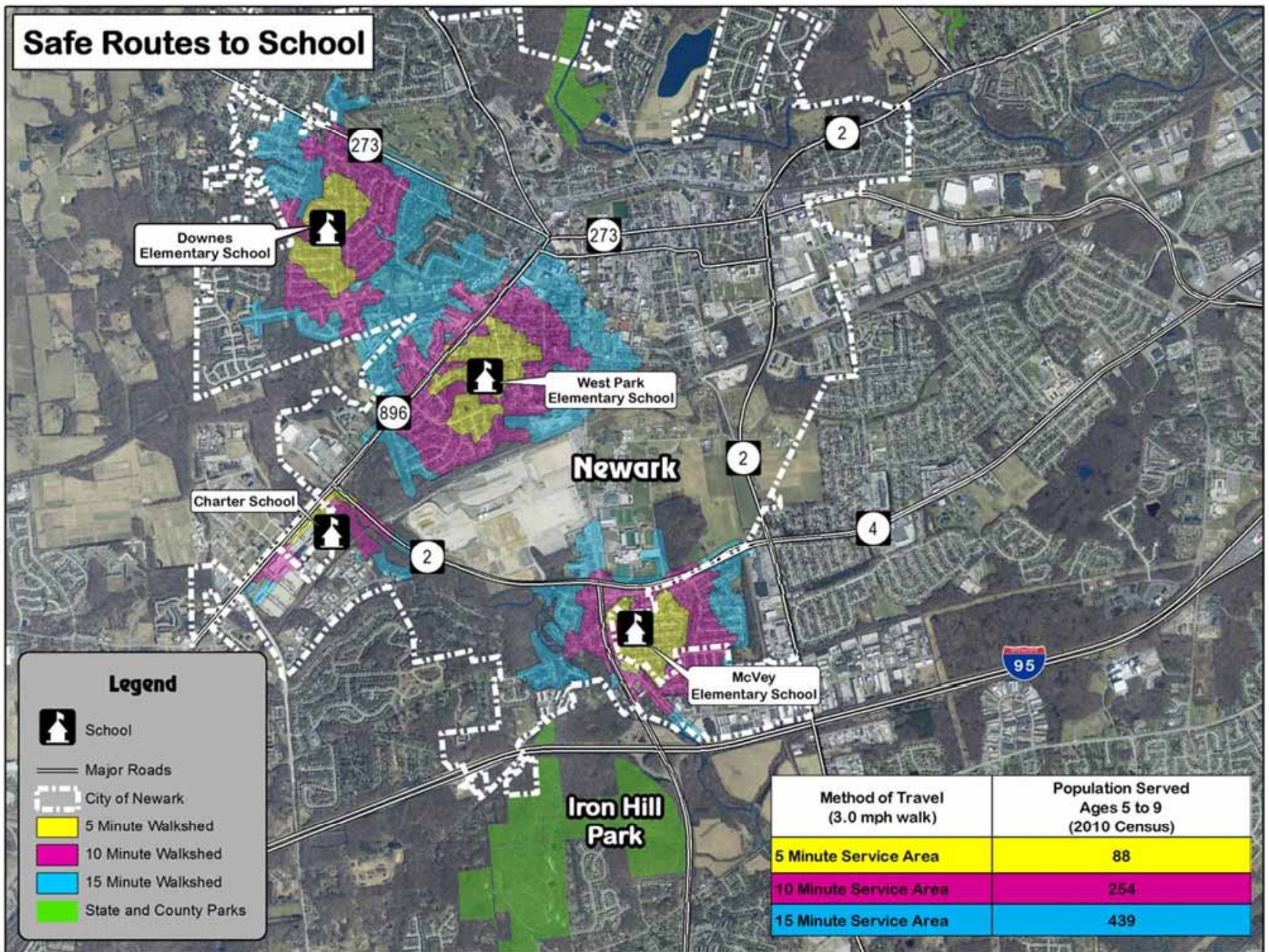
Industrial Track Trail

Evaluation of Potential New Trailheads

Trailhead	Population Served
27	876
28	282
29	546
30	254

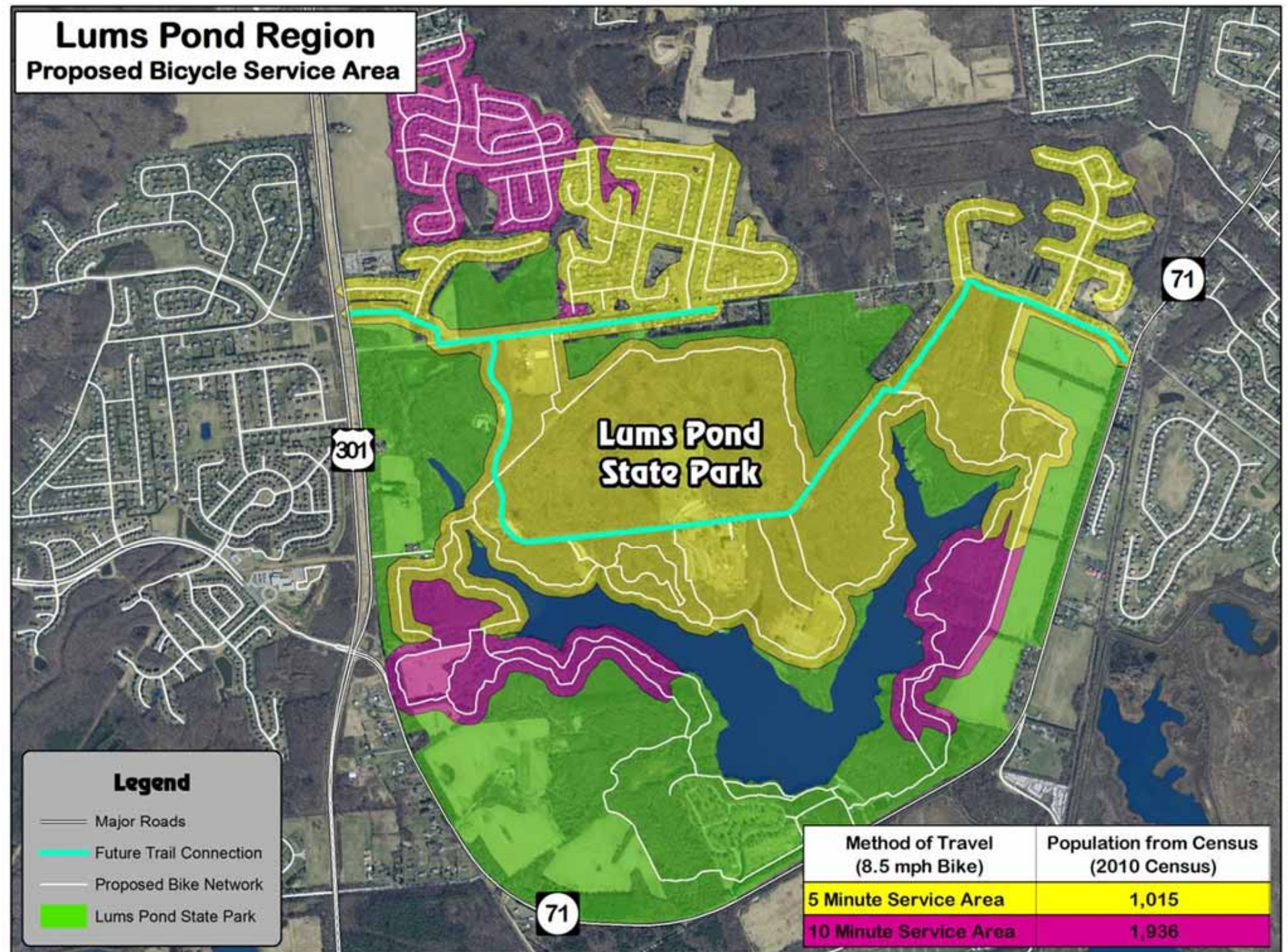


Safe Routes to School

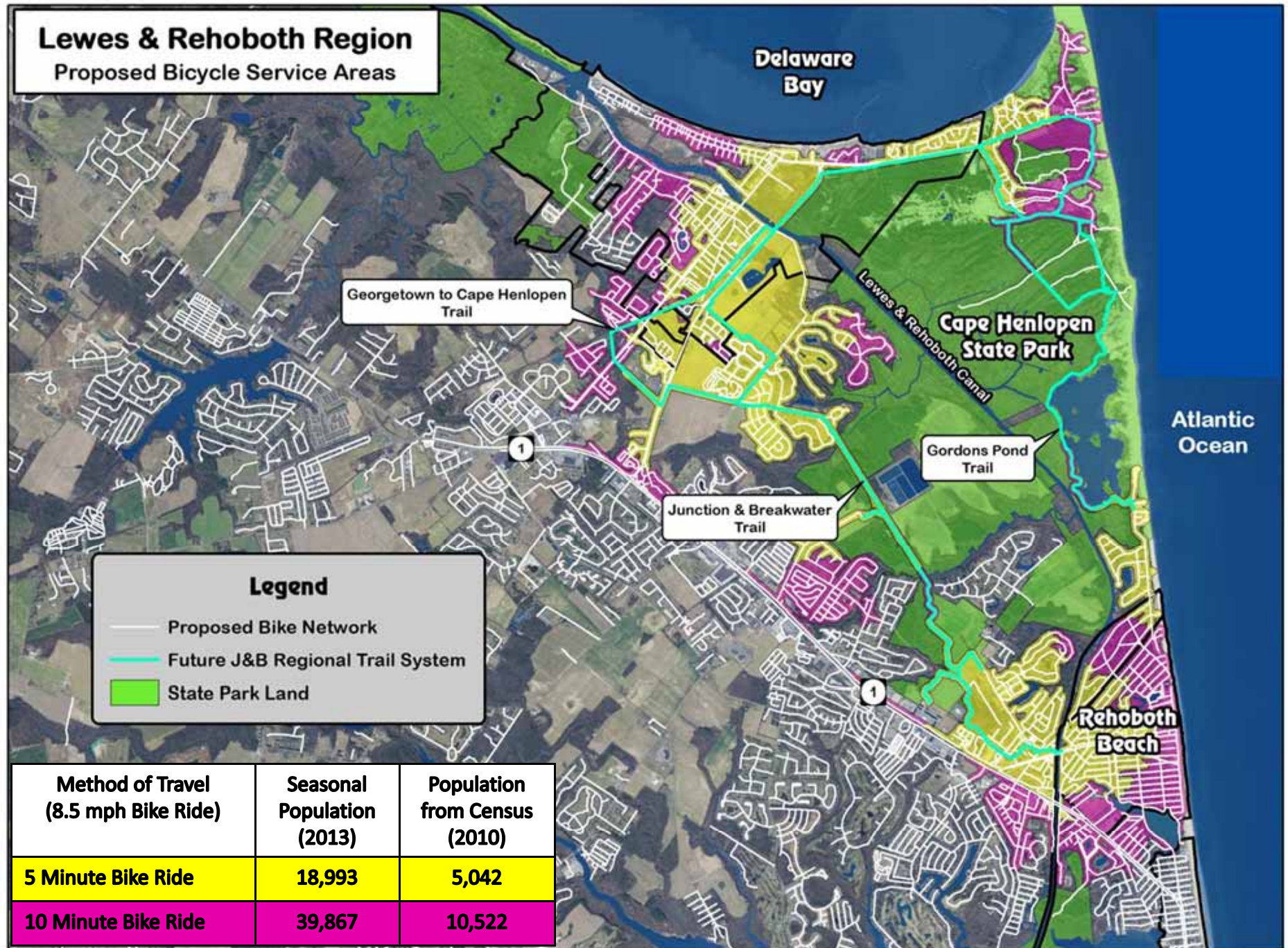


Lums Pond Region

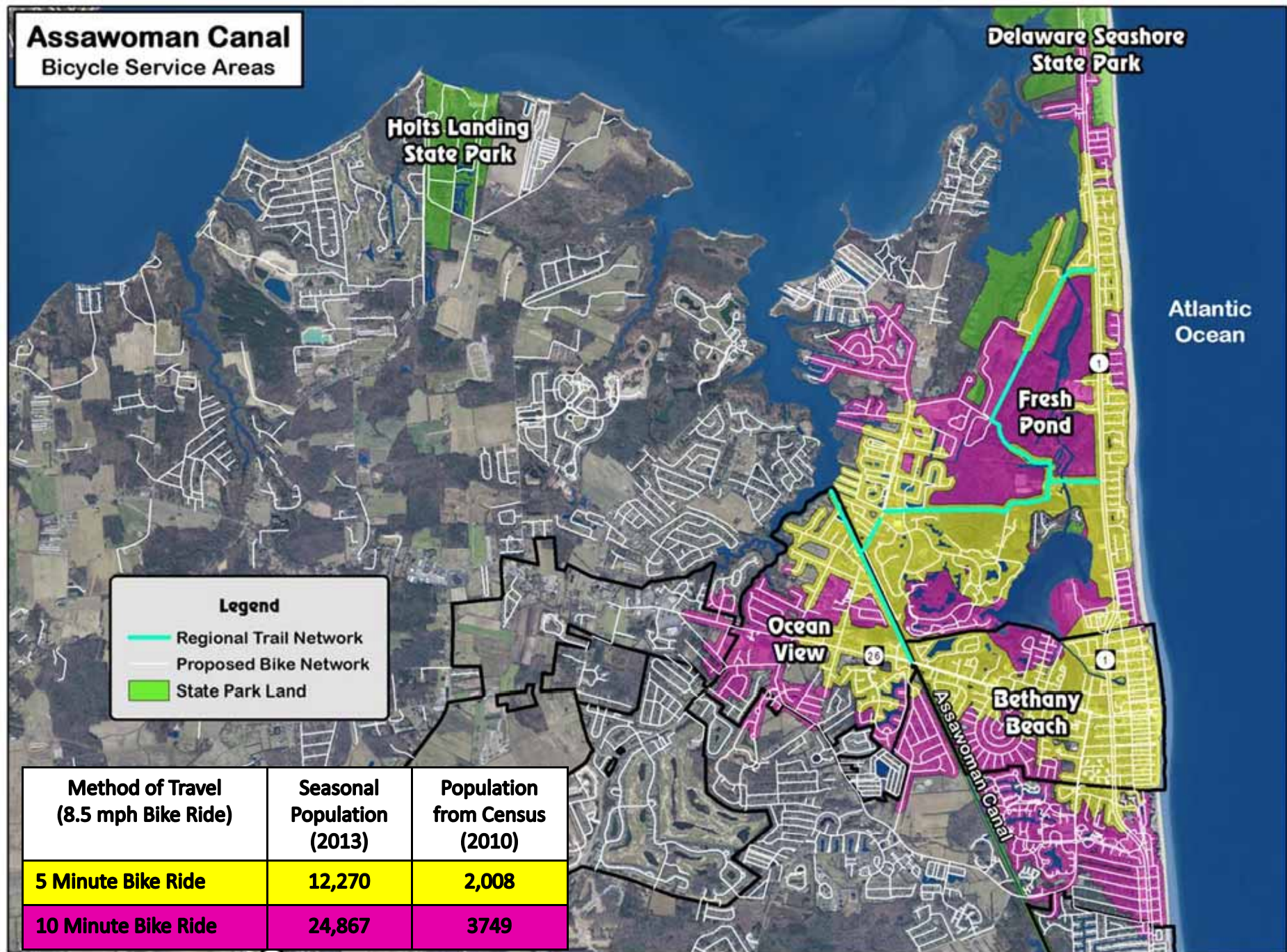
Proposed Bicycle Service Area



Lewes & Rehoboth Region Proposed Bicycle Service Areas



Assawoman Canal Bicycle Service Areas



Future Steps

- **Work with the counties and municipalities to provide GIS modeling assistance**
- **Work with Healthy Eating and Active Living (HEAL) to perform a statewide analysis**
- **Create an online user friendly portal where users can find close to home facilities to recreate**

Any Questions?

