

## *Delmarva Freight Study*

*Project Overview and Update  
for the 2013 Delmarva Freight Summit*

*June 26, 2013*



Delaware Department  
of Transportation



Maryland Department  
of Transportation



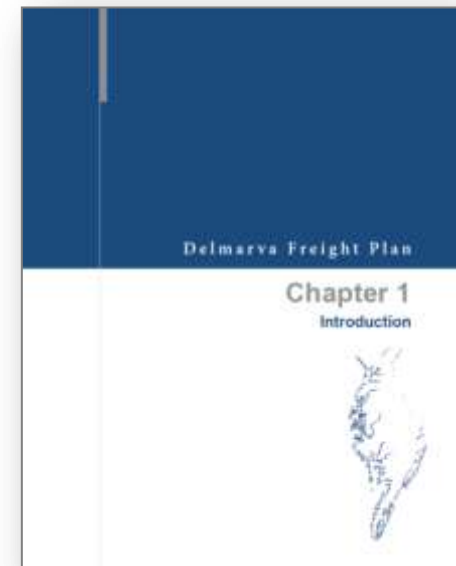
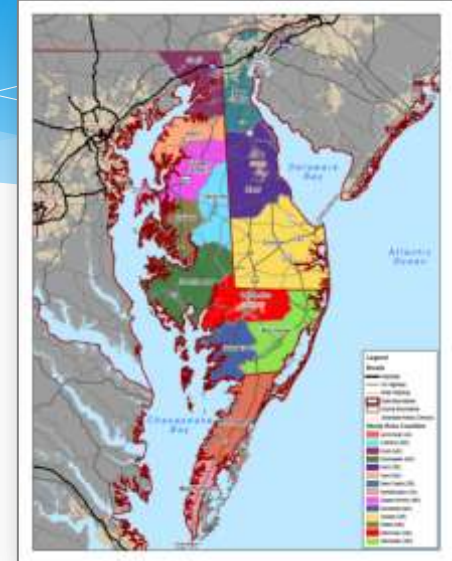
VANTAGE POINT  
DEVELOPMENT ADVISORS, LLC



WHITMAN, REQUARDT & ASSOCIATES, LLP  
ENGINEERS · ARCHITECTS · PLANNERS  
WRALLP.COM

## *Project Definition*

- ❖ Multi-state / multi-MPO freight plan
  - ❖ Multimodal freight transportation infrastructure
  - ❖ Federally-compliant under MAP-21
- 
- ❖ Performance-oriented plan
    - ✓ Freight connectivity, mobility, and accessibility
    - ✓ Safety and security
    - ✓ Sustainability and environmental stewardship
    - ✓ Economic vitality
    - ✓ System management, operations, and maintenance



## *Project Status*

*June 2012-2013*  
*Six key tasks to-date*

MAP-21

Document  
Reviews

Outreach

Freight  
Flows

Cargo  
Model

Scenario  
Planning



## MAP-21

Moving Ahead for Progress in the 21st Century

- ❖ Signed into law July 6, 2012
- ❖ Outlines National Freight Policy
- ❖ Outlines requirements for state freight plans
- ❖ Emphasizes project prioritization to improve freight movements
- ❖ Emphasizes establishment of state freight advisory committees

**MAP-21**

Document  
Reviews

Outreach

Freight  
Flows

Cargo  
Model

Scenario  
Planning

## Delmarva Freight Plan

### Appendix A

#### Document Review Summary

- ❖ Project area freight plans
- ❖ Project area multimodal plans
- ❖ Regional plans
- ❖ National guidance
- ❖ Peer reviews / Other sources

*The Delmarva Freight Plan  
must reflect intra-regional,  
inter-regional, and national  
trends in freight movement  
and planning*

MAP-21

Document  
Reviews

Outreach

Freight  
Flows

Cargo  
Model

Scenario  
Planning

## Delmarva Freight Plan

### Appendix B

#### Stakeholder Outreach Summary

- ❖ Project advisory meetings
- ❖ Freight summit insights
- ❖ Stakeholder interviews
- ❖ Online Survey



MAP-21

Document  
Reviews

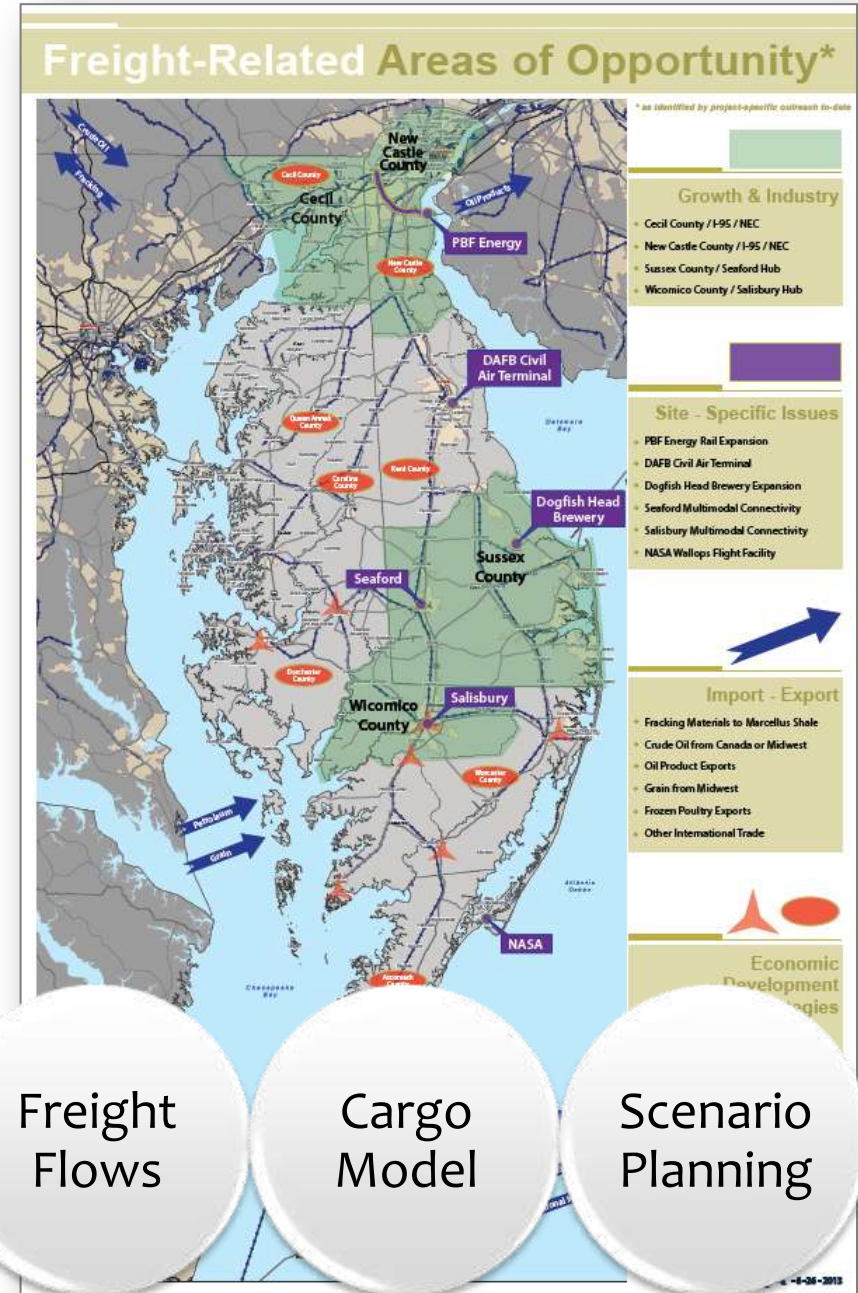
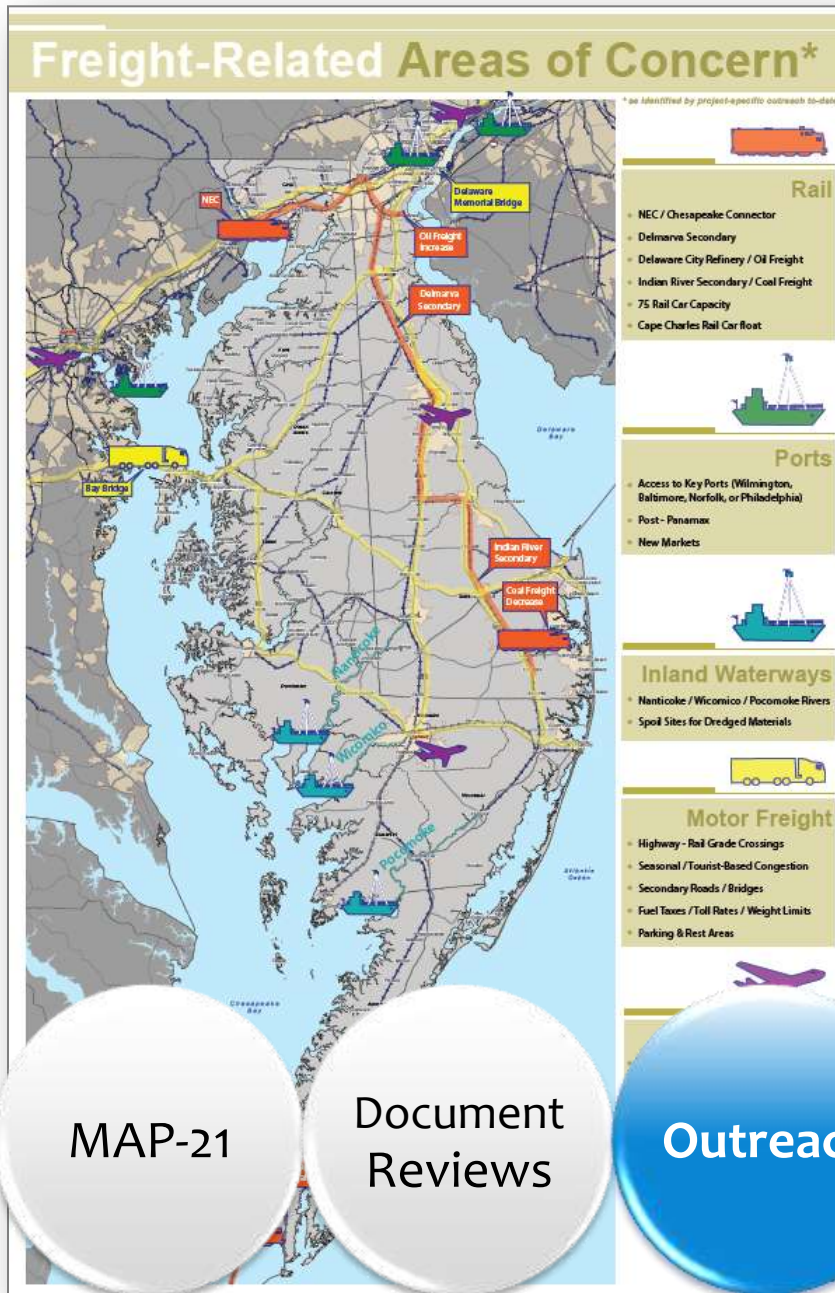
**Outreach**

Freight  
Flows

Cargo  
Model

Scenario  
Planning





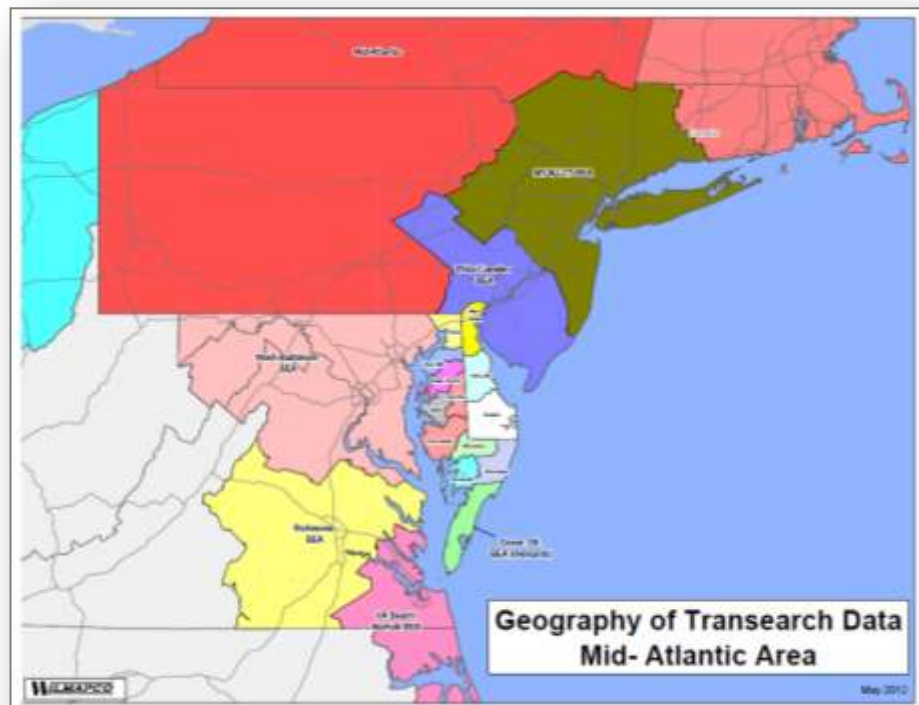


U.S. Department of Transportation  
Federal Highway Administration



Surface Transportation Board

- ❖ IHS Transearch data
- ❖ FHWA FAF-3 data
- ❖ STB rail waybill data



MAP-21

Document  
Reviews

Outreach

**Freight  
Flows**

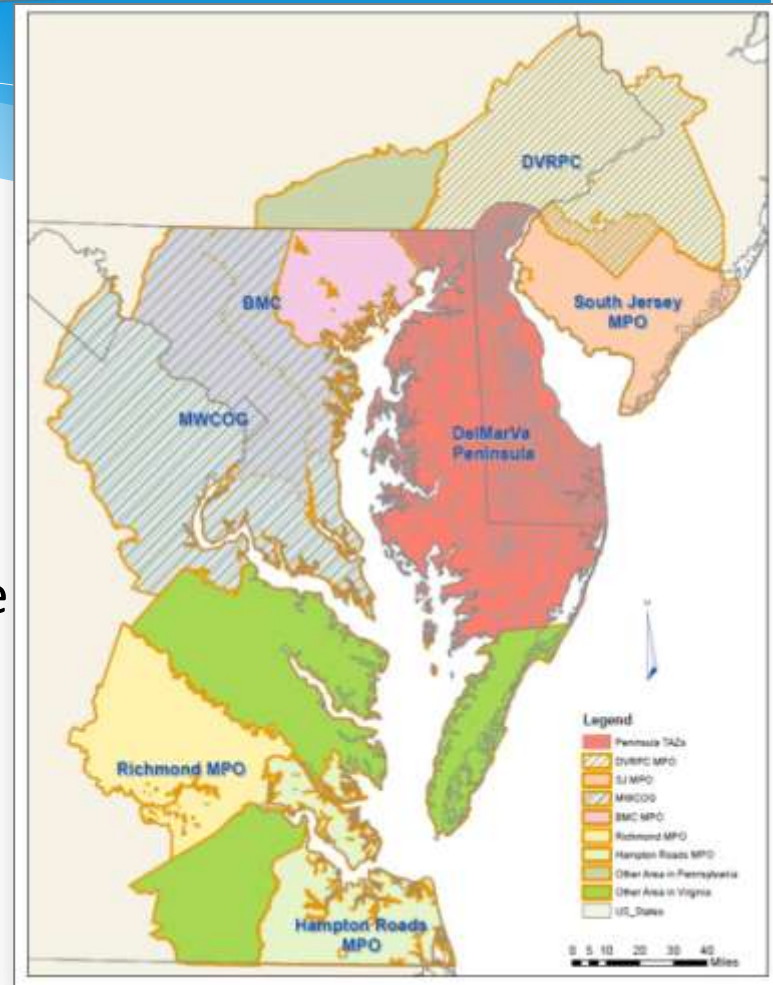
Cargo  
Model

Scenario  
Planning





- ❖ National-regional-peninsula focus
- ❖ Current and future freight forecasting
- ❖ Intermodal transfers and performance
- ❖ Local and long-haul trip predictions
- ❖ Decision-making impact tests
- ❖ Valuable tool for future agency use



MAP-21

Document  
Reviews

Outreach

Freight  
Flows

**Cargo  
Model**

Scenario  
Planning

## Model Buffer Area

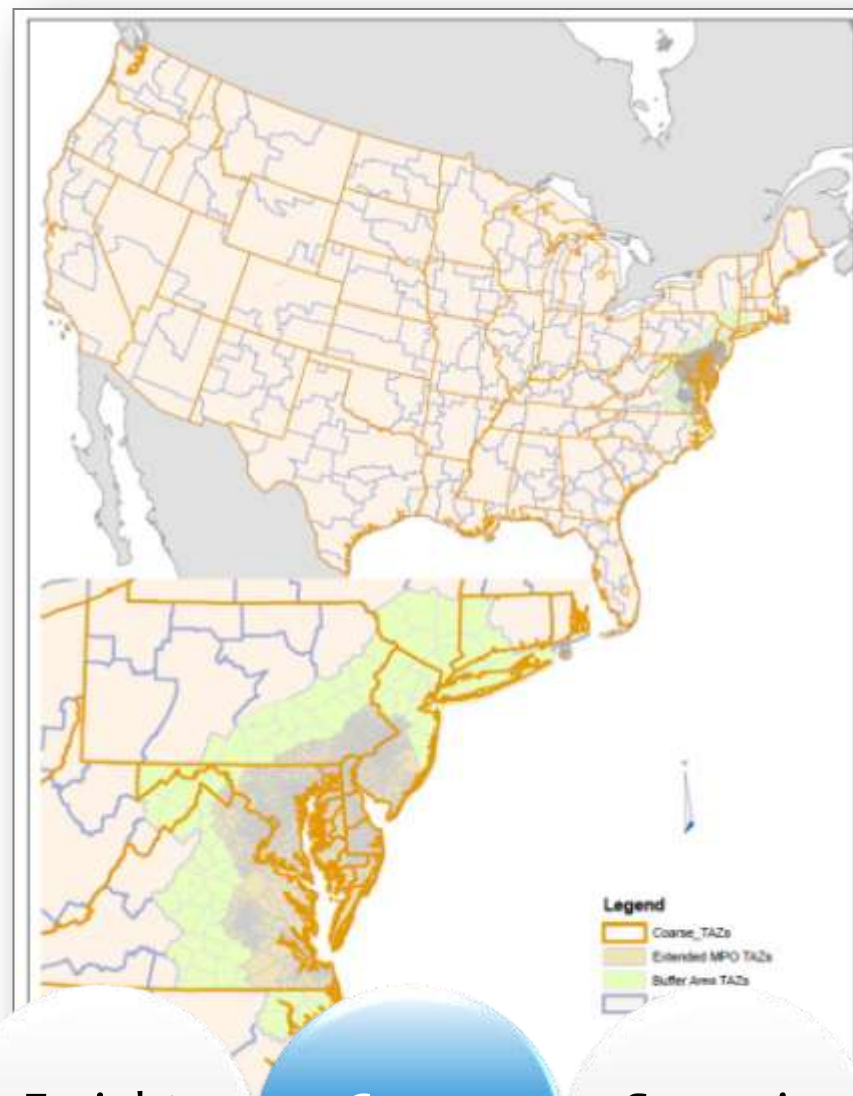


MAP-21

Document  
Reviews

Outreach

## Model TAZ Structure



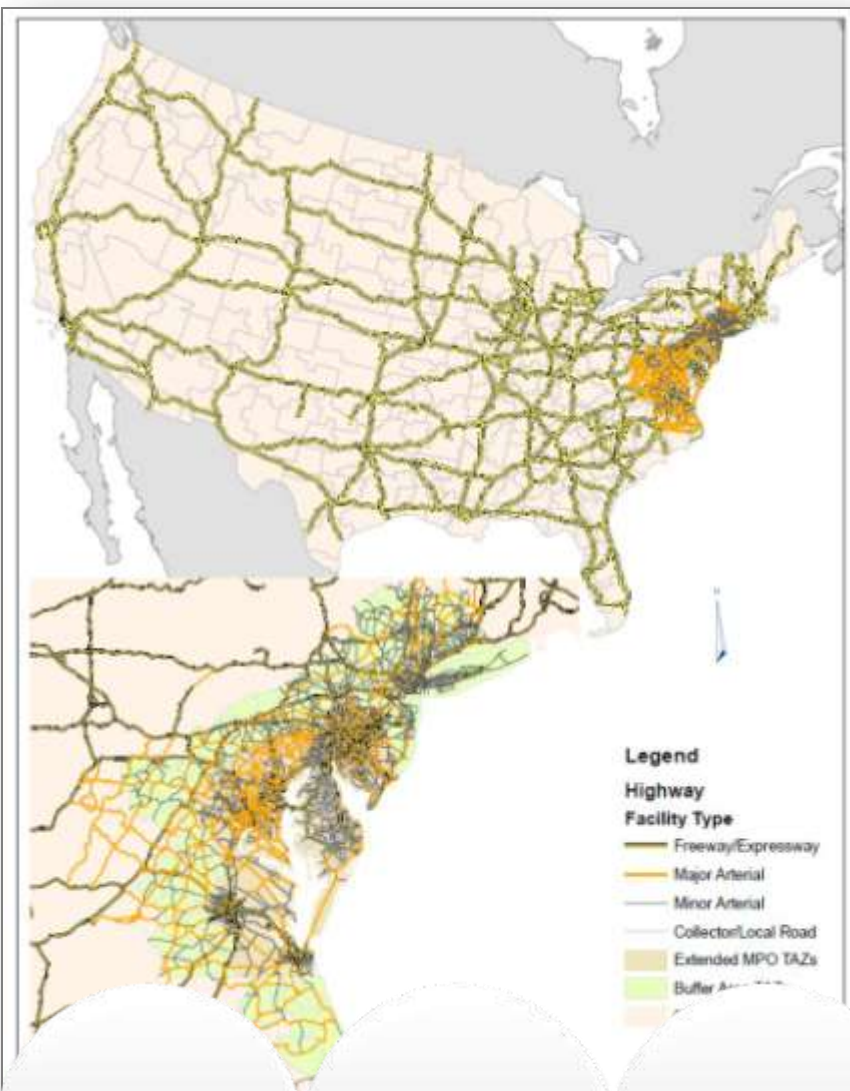
Freight  
Flows

Cargo  
Model

Scenario  
Planning



## Model Highway Network

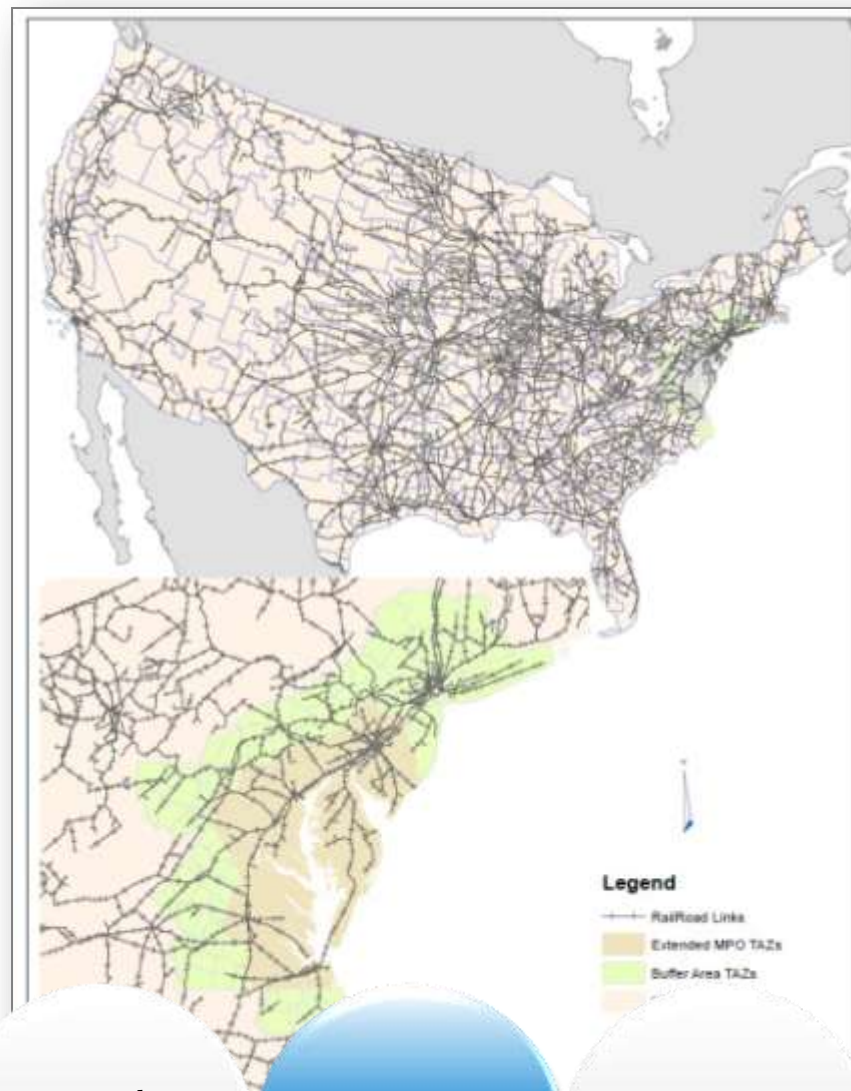


MAP-21

Document  
Reviews

Outreach

## Model Rail Network



Freight  
Flows

**Cargo  
Model**

Scenario  
Planning

## *What are Scenarios*

- ❖ Explore a focal issue
  - ❖ Explore challenging & diverse futures
  - ❖ Provide insights for decision-makers
- 

- ❖ Scenarios are NOT alternatives!

*“A scenario is simply a vision of a possible future state of the world and the relevant environment. Scenarios are methodically constructed stories...”*

*(Source: NCHRP 750)*

**“What if...”**

MAP-21

Document  
Reviews

Outreach


Freight  
Flows

Cargo  
Model

Scenario  
Planning



## Constructing the Scenario

- ❖ Factors to react to... (ex: *energy market trends*)
  - ❖ Factors to influence... (ex: *policy / investment assumptions*)
  - 
  - ❖ Performance measures... (ex: *travel time to the bay bridge*)
  - ❖ Scenario insights... (ex: *problem areas or economic costs*)
  - ❖ Factors to influence... (ex: *policy / investment priorities*)
- 

MAP-21

Document  
Reviews

Outreach

Freight  
Flows

Cargo  
Model

Scenario  
Planning

# *Anticipated Scenarios*

## ***Baseline Scenarios:***

- ❖ 2011 “Existing” conditions
- ❖ 2040 “Business as Usual” or “No-Build” conditions

## ***Economic Outlooks:***

- ❖ Trendline Growth assumptions
- ❖ Accelerated Employment assumptions

## ***Infrastructure Scenarios:***

- ❖ Multimodal Constraint Scenario
- ❖ Multimodal Enhancement Scenario

MAP-21

Document  
Reviews

Outreach

Freight  
Flows

Cargo  
Model

Scenario  
Planning

Please visit our exhibit table... and fill-out a comment form!

## Multimodal Constraint Scenario



What would the future look like if freight transportation on the peninsula was constrained by a loss or reduction of key multimodal elements or opportunities?

For example, WHAT IF...

- 1 ... freight rail access across/along the NEC continues to be restricted to a narrow window of time?
- 2 ... coal freight demand to the Indian River power plant ceased?
- 3 ... at-grade rail / highway crossing conflicts increased?
- 4 ... the NS Delmarva Secondary became a shortline railroad (from Porter to Pocomoke City)?
- 5 ... the NS Indian River Secondary became a shortline railroad (from Harrington to Frankford)?
- 6 ... the BCRR car float operations permanently ceased?
- 7 ... Wicomico River barge travel was restricted due to funding / dredging constraints?
- 8 ... Pocomoke River barge travel was restricted due to funding / dredging constraints?
- 9 ... oil and gas imports/exports had fewer transport options?
- 10 ... truck volumes and roadway maintenance needs increased substantially?

Constraint Scenario w/ Trendline Growth:

What would this future look like in 2040 with trendline economic or demographic changes?

Constraint Scenario w/ Accelerated Employment:

What would this future look like in 2040 with accelerated employment growth in certain industries?

## Multimodal Enhancement Scenario



What would the future look like if freight transportation on the peninsula was enhanced or expanded by key multimodal elements or opportunities?

For example, WHAT IF...

- 1 ... a completed Chesapeake Connector expanded freight rail access along/across the NEC?
- 2 ... coal freight losses to the Indian River power plant were offset by other/new rail demand?
- 3 ... the NS Indian River Secondary became a shortline railroad (from Harrington to Frankford)?
- 4 ... the peninsula's rail network was enhanced (e.g., removal of speed/weight restrictions or bottlenecks)?
- 5 ... the Seaford Rail Bridge was reconstructed?
- 6 ... a new intermodal facility was strategically located (e.g. near Newark, Seaford, Delmar, or Salisbury)?
- 7 ... BCRR car float operations were stabilized or expanded?
- 8 ... Post-Panamax shipping trends directly impacted the region (e.g., via Baltimore or Norfolk)?
- 9 ... short sea shipping opportunities or the marine highway concept flourished?
- 10 ... the Port of Wilmington developed a new container facility?
- 11 ... oil and gas imports/exports had more transport options?
- 12 ... higher freight volumes increased conflicts with other users (e.g., barges versus recreational water or waterfront property access; or trucks versus seasonal tourism)?

Enhancement Scenario w/ Trendline Growth:

What would this future look like in 2040 with trendline economic or demographic changes?

MAP-21

Document  
Reviews

Outreach

Freight  
Flows

Cargo  
Model

Scenario  
Planning

Delmarva  
Freight  
Plan



Please visit our exhibit table... and fill-out a comment form!

**“WHAT IF”  
Examples:**

**... NEC corridor  
restrictions continue?**

**... coal demand  
ceased?**

**... barge travel  
was restricted?**

**... truck volumes  
and maintenance  
needs increased?**

MAP-21

Document  
Reviews

Outreach

**“WHAT IF”  
Examples:**

**... the Chesapeake  
Connector was completed?**

**... a new  
intermodal facility  
was constructed?**

**... Post-Panamax  
trends directly impact  
the peninsula?**

**... higher freight  
volumes conflicted  
with other users?**

Freight  
Flows

Cargo  
Model

Scenario  
Planning



## Next Steps...

- ✓ *Finalize commodity flow data*
- ✓ *Finalize Cube Cargo model*
- ✓ *Run scenario models and review insights*
- ✓ *Plan for policy and economic guidance*
- ✓ *Plan for transportation projects and strategies*
- ✓ *Submit Final Plan ≈ December 2013*



Delaware Department  
of Transportation



Maryland Department  
of Transportation



VANTAGE POINT  
DEVELOPMENT ADVISORS, LLC



WHITMAN, REQUARDT & ASSOCIATES, LLP  
ENGINEERS · ARCHITECTS · PLANNERS  
WRALLP.COM