

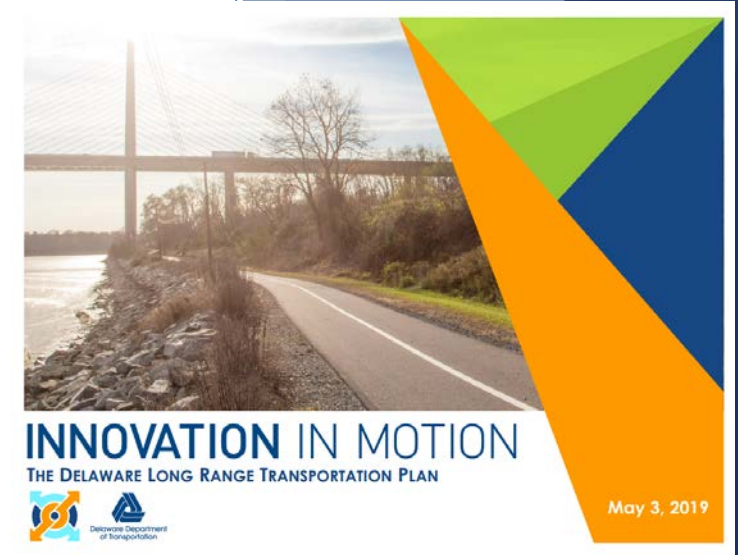


Delmarva Chemicals Manufacturing Supply Chains

Deliverable 1: Delmarva
Economy & Chemicals Industry

Delivered to the Wilmington Area Planning Council
(Wilmapco): August 14, 2013

Future Freight Planning Initiatives



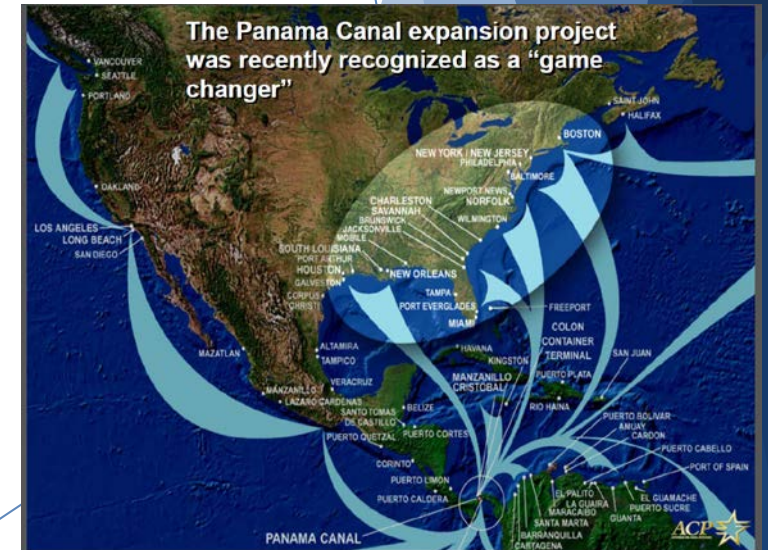
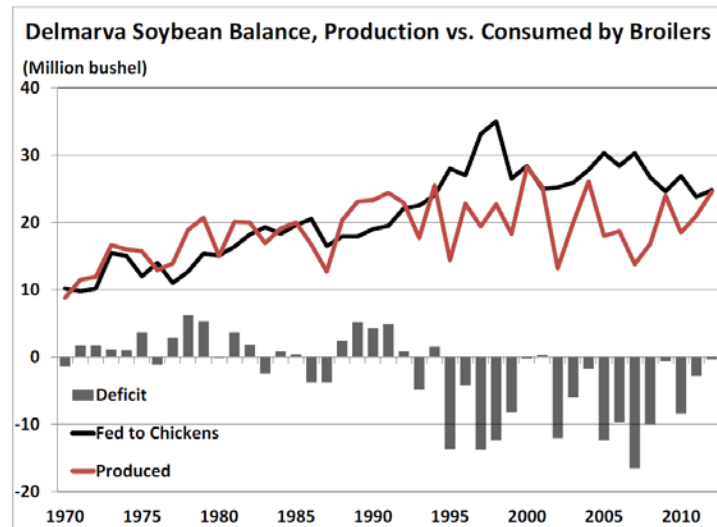
Executive Summary

Wilmington-Harrisburg Freight Study



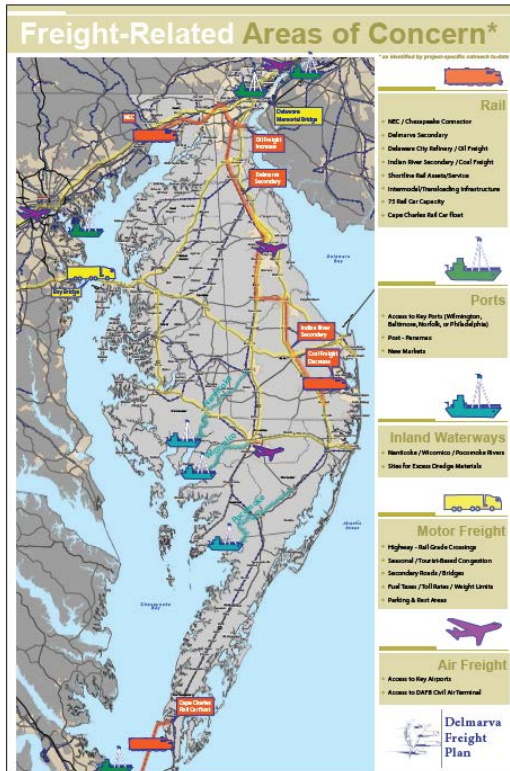
Submitted to:
The Wilmington-Harrisburg Freight Study Steering Committee
December 2002

Submitted By:
Wilbur Smith Associates
Reebie Associates
Martin Associates

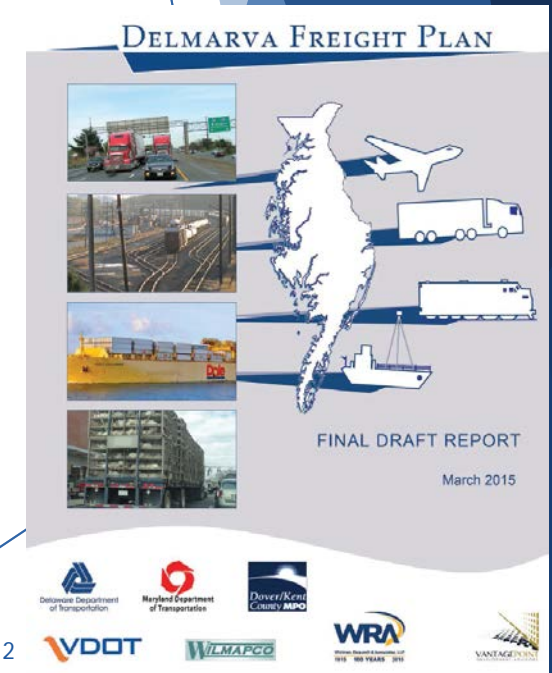
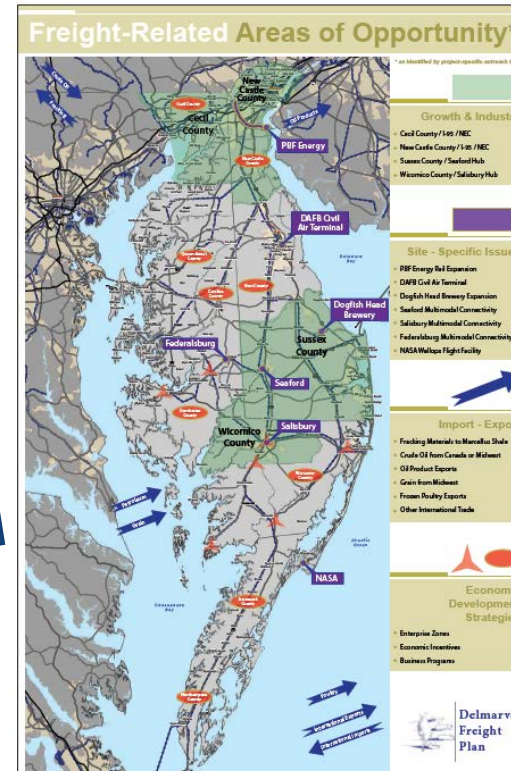


Planning Freight Work Plan & Activities

- 2015 Development of Delmarva Freight Plan (Updated in 2017)
- Feedback from Shippers, logistics and supply chain community
- Gave guidance on initiatives to pursue as part of Strategic Freight Goals:
 1. Economic Vitality
 2. Freight Connectivity, Mobility & Accessibility
 3. Safety & Security
 4. System Management, Operations & Maintenance
 5. Sustainability & Environmental Stewardship



Feedback and Goals from Plan help feed our planning "To-Do List"



Planning Freight Work Plan & Activities

- Current internal “To-Do” List

Recently Completed

Agriculture Supply Chain Analysis

Chemical Supply Chain Analysis

DeIDOT LRTP w/ Freight Element

MAP-21 Freight Performance Measurement & Truck Bottlenecks

Underway FY 2020/2021

Impacts/benefits of possible truck access improvements in the Port of Wilmington Area

DE Truck Parking Study

First/Final Mile

Dover Freight Management-Air Cargo Study

Kent County East/West Truck Freight Route Feasibility Study

Harrington Intermodal Freight Terminal Feasibility Study

US 301 before/after analysis

Ongoing Projects

Website Development

MAP-21 Freight Performance Measurement

Signal Re-Timing of major freight corridors

Maintenance and expansion of Freight Modeling Capacity

Regular Meetings with DOTs, MPOs and other agencies

Planning Freight Work Plan & Activities

- Current internal “To-Do” List

Recently Completed

Agriculture Supply Chain Analysis

Chemical Supply Chain Analysis

DeIDOT LRTP w/ Freight Element

MAP-21 Freight Performance Measurement & Truck Bottlenecks

Underway FY 2020/2021

Impacts/benefits of possible truck access improvements in the Port of Wilmington Area

DE Truck Parking Study

First/Final Mile

Dover Freight Management-Air Cargo Study

Kent County East/West Truck Freight Route Feasibility Study

Harrington Intermodal Freight Terminal Feasibility Study

US 301 before/after analysis

Ongoing Projects

Website Development

MAP-21 Freight Performance Measurement

Signal Re-Timing of major freight corridors

Maintenance and expansion of Freight Modeling Capacity

Regular Meetings with DOTs, MPOs and other agencies

Other "To Do" Items

Required: Per SR 10 resolution: Establish a bi-state working/coordination group to discuss and address issues associated with regional freight movement

Periodic Global Freight Trends and Challenges reporting

Test capabilities of Streetlight O/D dataset for possible use in freight planning

So, what's next for our To-Do list?



So, what's next for our To-Do list?

CURRENT CHALLENGES & CONSTRAINTS

HIGHWAY CONGESTION

Increasing congestions reduces delivery reliability and increases costs and potential conflicts, particularly with seasonal peak traffic.



DETERIORATING INFRASTRUCTURE

Aging infrastructure requires more investment to maintain good conditions of the first and last mile connections, especially on secondary roads and bridges.



GEOGRAPHY

The geography of the Delmarva peninsula affects how Delaware is able to link to the regional movement of goods along the East Coast.

MARINE ACCESS

There are limited sites and capacity for dredge material disposal.



LOCAL CONNECTIONS

The network must keep pace with freight facility development occurring in the region.



LOCAL CONFLICTS

Residents do not want truck traffic in their neighborhoods.

INTERMODAL CONNECTIONS

Adequate capacity must be maintained to enable efficient transfers between highway, rail, air and marine modes.

ONLINE SHOPPING

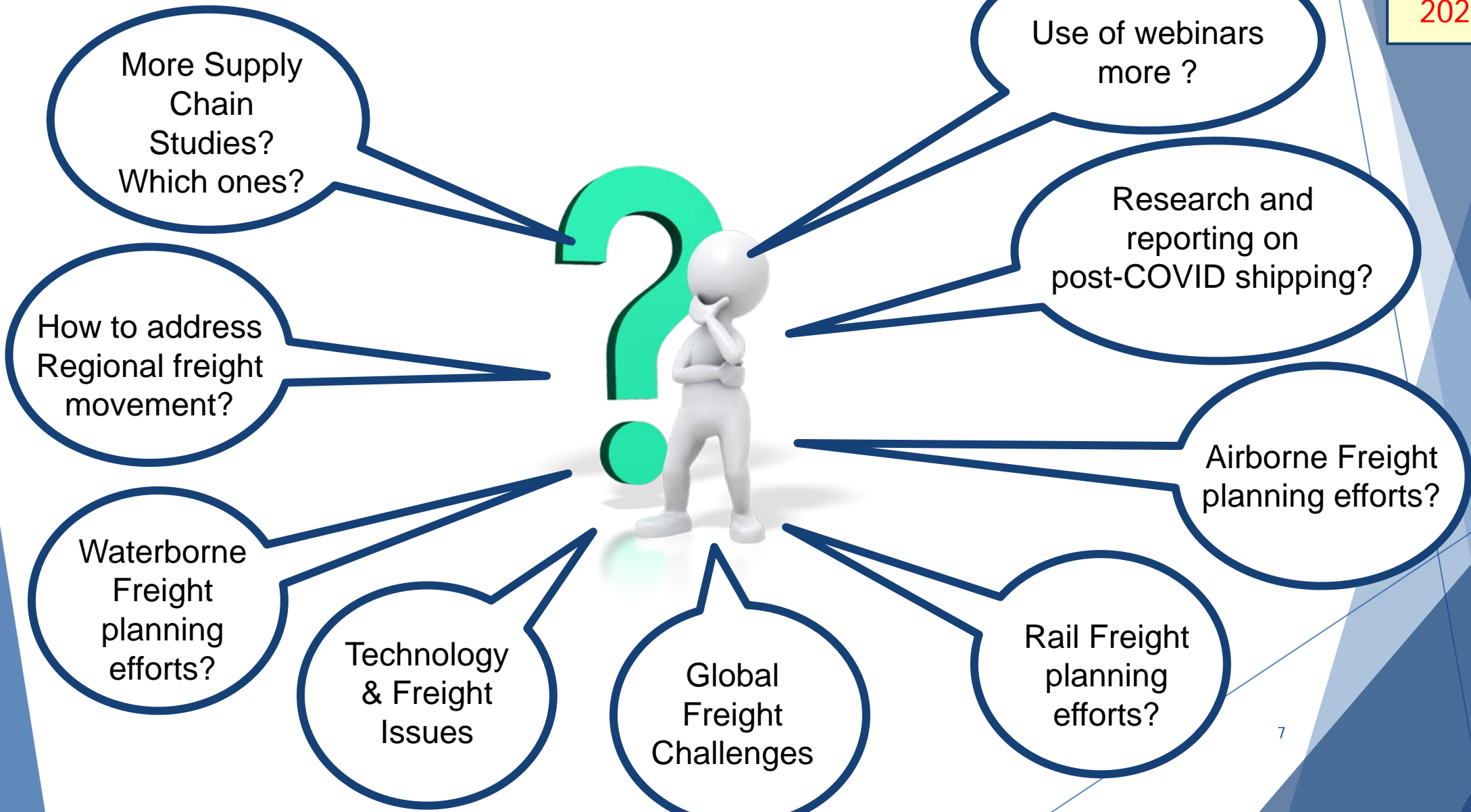
Local package delivery trips are increasing.



Source: DeIDOT Long Range Transportation Plan

Reminder: Next Freight Plan due November 2022!!

So, what's next for our To-Do list?



Thank You!

<http://wilmapco.org/goodsmovement>

