

Delmarva #FreightFriday **Freight Planning Updates**

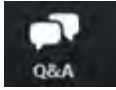
June 5, 2020


Presented by the University of Delaware Institute for Public
Administration in partnership with:
Delaware Department of Transportation (DelDOT), Dover/Kent
County MPO, Salisbury/Wicomico MPO, and WILMAPCO



Welcome to this webinar!

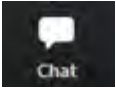
As a webinar participant you are **automatically muted and your video is disabled**.
Hover your mouse over the lower portion of your Zoom screen to access your controls:



Use the Q&A box to type in your questions for the speakers. You can “Upvote” your favorite questions by clicking the “thumbs up” icon. 



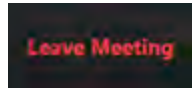
Raise your hand to show your engagement when the speakers request your participation.



Use the chat window to request technical support from the host.



We are recording this webinar to share online.



Participate in the evaluation when you leave the webinar.

Delmarva Freight Working Group Partners

Delaware Department of Transportation (DelDOT)

deldot.gov

Dover/Kent County Metropolitan Planning Organization (MPO)

doverkentmpo.delaware.gov

Maryland State Highway Administration

www.roads.maryland.gov

Salisbury/Wicomico MPO

www.swmpo.org

University of Delaware Institute for Public Administration

www.ipa.udel.edu

Wilmington Area Planning Council (WILMAPCO)

www.wilmapco.org

U.S. Department of Transportation, Federal Highway Administration

www.fhwa.dot.gov

Goals of Delmarva Freight Working Group

- Enhance awareness and understanding of freight planning programs and initiatives
- Advance research on significant freight and goods movement trends
- Highlight freight industry issues, needs, and opportunities in the Delmarva region
- Encourage public-private networking and partnership development

Delmarva Freight Working Group Activities

Monthly freight planning coordination meetings

Two annual community outreach and partnership events

- Winter Freight Meeting
- Summer Freight Summit (or Virtual #FreightFriday)
- Presentations available at www.wilmapco.org/goodsmovement/
- Content suggestions always welcome

Agenda:

Freight Planning Updates

- WILMAPCO's Freight Work Plan
- I-95 Corridor Rehabilitation Project Overview
- Dover/Kent County MPO's Freight Work Plan
- DelDOT's Freight Work Plan
- Closing Discussion



Freight & The FAST Act

- Signed into law Public Law 114-94 in 2015
- Funds surface transportation programs
- Improves mobility on America's highways
- Creates jobs and supports economic growth
- Accelerates project delivery and promotes innovation
- **Added funding dedicated to freight**
- Added 10 Requirements to State Freight Plans

\$1.2 B / year (average), apportioned to States by formula

Fiscal year	2016	2017	2018	2019	2020
Estimated funding (in billions)	\$1.14	\$1.09	\$1.19	\$1.34	\$1.49

- Approx. \$4.5 million for DE, \$17 million for MD annually

1. Freight System Trends, Needs, and Issues
2. Freight Policies, Strategies, and Performance Measures
3. Freight Network Facilities (Multi-modal & CUFC/CRFC)
3. National Freight Policy/Program Support
4. Innovative Technology Consideration

6. Roadway Deterioration Issues and Mitigation Strategies
7. Freight Mobility Issues and Mitigation Strategies
8. Freight Induced Congestion and Mitigation Strategies
9. Freight Investment Plan (Fiscally Constrained)
10. State Freight Advisory Committee Consultation

Speakers



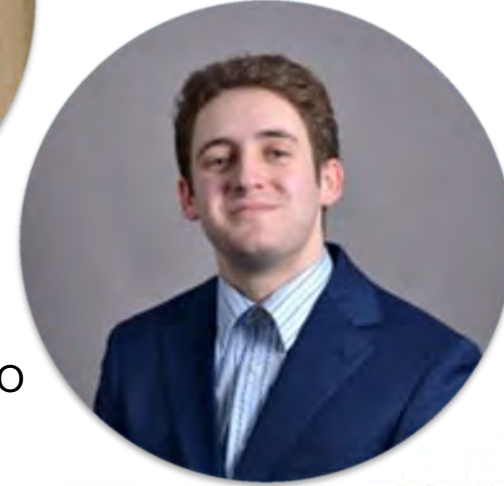
Dan Blevins
Principal Planner
WILMAPCO

Josh Thomas, AICP
Planning Supervisor
DeIDOT



Jim Galvin, AICP
Principal Planner
Dover/Kent County MPO

Sam Sherman
Transportation Planner
DeIDOT



WILMAPCO's FY 2021 Freight Work Plan & Activities



WILMAPCO's FY 2021 Freight Work Plan & Activities

- 2015 Development of Delmarva Freight Plan (Updated in 2017)
- Feedback from Shippers, logistics and supply chain community
- Gave guidance on initiatives to pursue as part of Strategic Freight Goals:
 1. Economic Vitality
 2. Freight Connectivity, Mobility & Accessibility
 3. Safety & Security
 4. System Management, Operations & Maintenance
 5. Sustainability & Environmental Stewardship

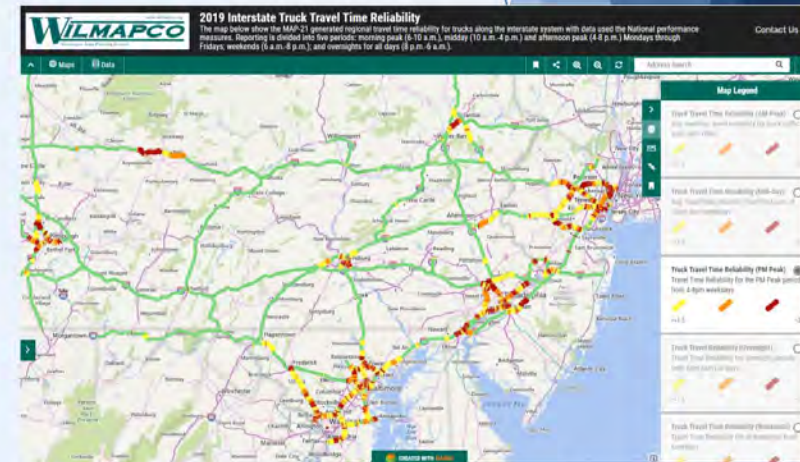
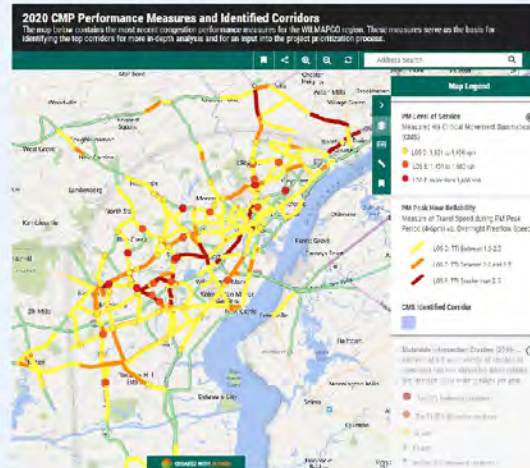
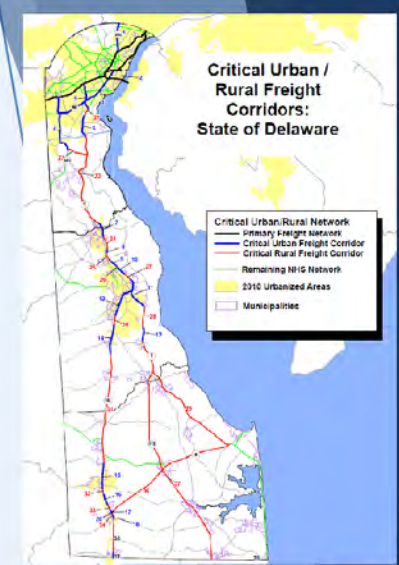


Feedback and Goals from Plan help feed our planning "To-Do List"



WILMAPCO's FY 2021 Freight Work Plan & Activities

- Use of annual planning funds to develop studies / analysis to address these goals
 - Add freight into annual ongoing planning activities
 - Congestion Management Process (CMP)
 - Project Prioritization
 - Data Collection
 - Transportation Performance Measures (TPM)
 - Supply material to freight webpage
- <http://www.wilmapco.org/goodsmovement/>

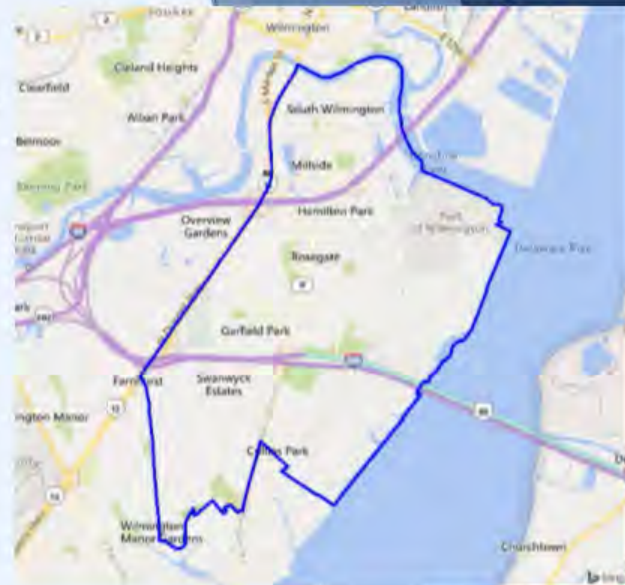


WILMAPCO's FY 2021 Freight Work Plan & Activities

Project: Impacts/Benefits analysis of Truck Access Improvements around the Port of Wilmington

Project Details:

- Evaluate series of possible improvements in and around the Port of Wilmington area from SR 9 Corridor Master Plan, several expansion proposals for the Port of Wilmington and other studies
- Serve as the technical analysis to analyze these ideas with a land use and transportation model-based approach.
- Capture “what-if” scenarios for which improvement(s) work best
- 9-11 month project schedule
- RFP out June 2020



Measures of Effectiveness (MOEs) can include (but limited to) items such as:

- Changes in truck volumes along SR 9 and Terminal Ave.
- Intersection LOS along SR 9
- Travel Time changes SR 9 and Terminal Ave.
- Project Cost (CTP-level estimates)
- Air Quality emission benefits

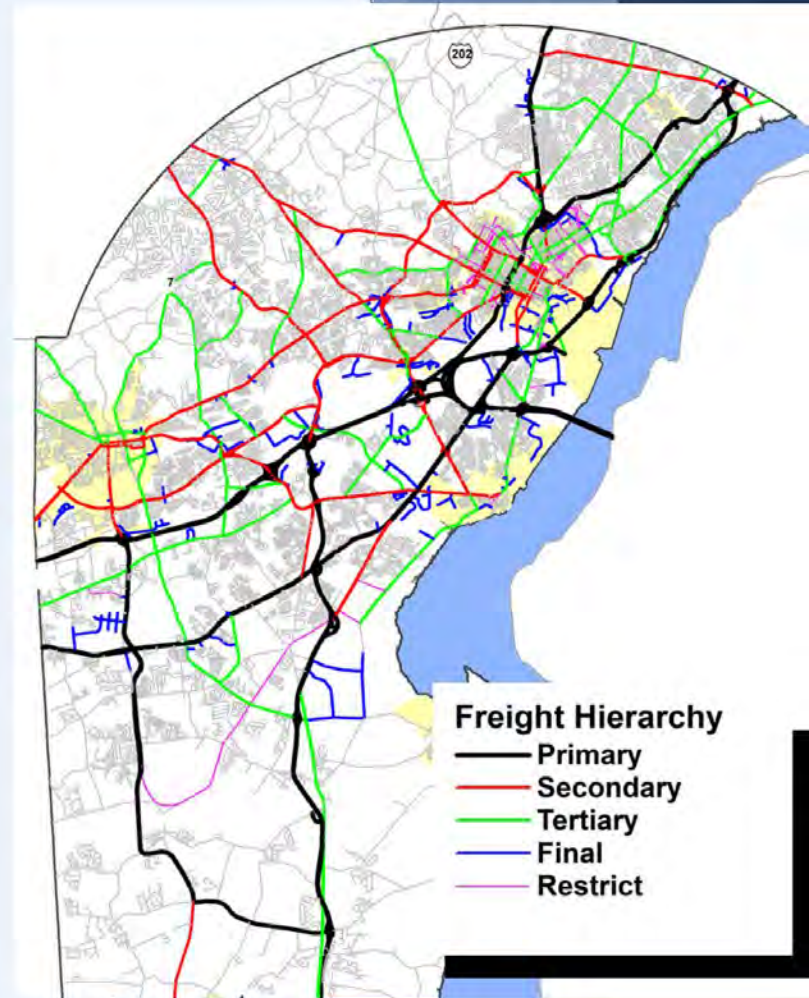
Road evaluations include (but limited to):

- Pigeon Point Rd. extension to I-295
- Intersection LOS along SR 9
- Interchange between I-295 and Pigeon Point Rd.
- Pyles Lane
- Connection between Garasches Lane and Terminal Avenue

WILMAPCO's FY 2021 Freight Work Plan & Activities

Project: First/Final Mile Freight Network Development

- **What is a “final mile”**
 - Road segment that is the first/last link to a truck generating facility
 - Usually a Collector/Local Road
 - Usually in close residential area
 - Have an abnormally high truck % vs. similar routes
- Most are not understood or well defined.
Lack attention from decision makers.
- Not fully aware of the importance of freight to the economy of their region and to the Nation as a whole.
- Can be poor condition/ functionality
 - Geometrics and Physical Deficiencies
 - Inadequate turning raddii
 - Inadequate shoulder width / stabilized shoulders
 - Lack of lane width
 - Drainage/Flooding



WILMAPCO's FY 2021 Freight Work Plan & Activities

Project: First/Final Mile Freight Network Development

Project Details:

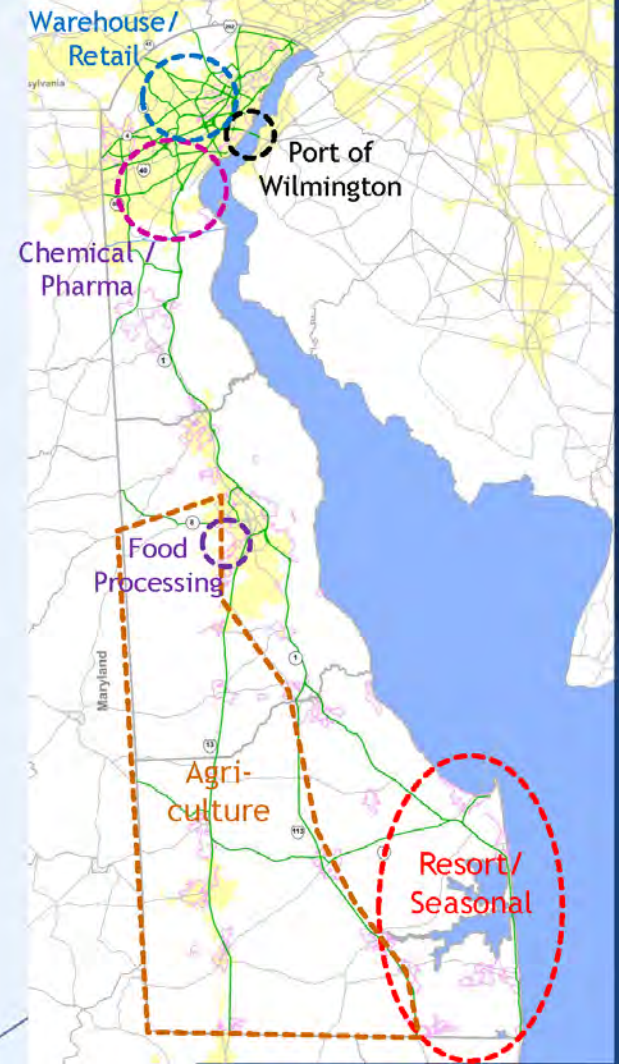
- Refine existing efforts to define and designate first/final mile network in all of Delaware
- Form project working group comprised of freight professionals to better understand needs of the users of the system on a detailed level
- Develop recommendations and tools to allow effective improvements and maintenance while balancing the needs of other users of the transportation system
- Use of CTF, Pave/rehab, or FAST-Act funds to make improvements (if applicable)
- "Freight as a good neighbor" by addressing residential/freight movement concern
- 9-11 month project schedule
- RFP out June 2020



WILMAPCO's FY 2021 Freight Work Plan & Activities

Project: Delaware Statewide Truck Parking Study

- Two-part approach:
 1. Address the requirements set by MAP-21 for addressing truck parking along the interstate system
 2. Address more localized, shorter-term truck parking and staging within the State of Delaware
- Manage the wide range of industries within DE with different trucking needs
- Use knowledge from local truck community
- Use of new data collection sources (There's an app for that!)



WILMAPCO's FY 2021 Freight Work Plan & Activities

Project: Delaware Statewide Truck Parking Study

Project Details:

Task 1: Truck Parking: The National Perspective

- Jason's Law, Current Major parking inventory
- National Trends

Task 2: Existing Local Truck Parking Conditions

- More local perspective
- Use of focus group

Task 3: Overnight Parking Analysis

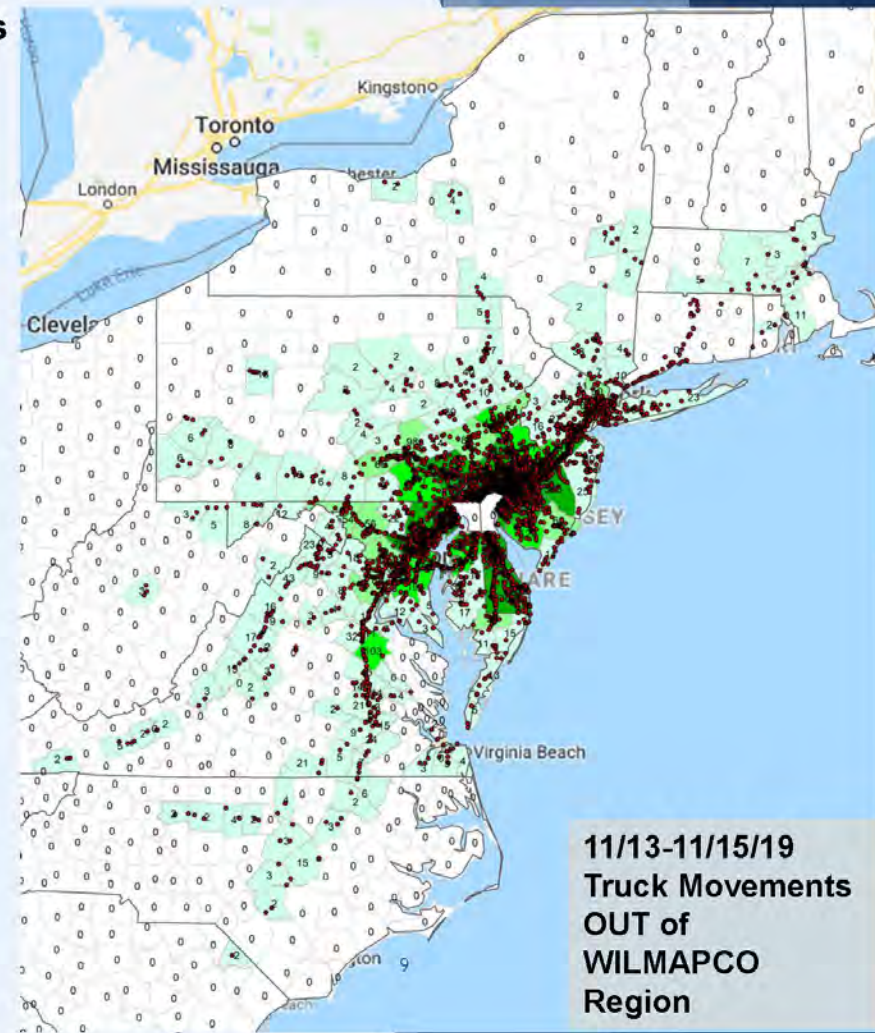
- Examine concentration of overnight parking (designated/undesignated)
- Seasonal variations? "Truck Parking Deserts"??

Task 4: Findings and Focus Group Workshop

- Possible physical/technology changes

Task 5: Strategies and Recommendations

- RFP June 2020
- 12-14 Month Project Schedule



Thank You!

For more information about upcoming projects, please contact
Dan Blevins: dblevins@wilmapco.org (302)737-6205 x121





Rehabilitation of I-95 from I-495 to
North of the Brandywine River Bridge

Project Website



restorethecorridor.com

Project Overview

- ▶ I-95 from I-495 interchange to just north of Brandywine River
 - ▶ AKA “Wilmington Viaduct”
 - ▶ 6 miles of road
- ▶ Repair and upgrade existing infrastructure to extend the life of the corridor for 30+ more years
 - ▶ Original structure built in 1964
- ▶ 3 year construction project
 - ▶ Main project begins in Spring of 2021





Timeline

Intro Video



Current Work

- ▶ Design Phase for main project
- ▶ Intro video referenced companion projects
 - ▶ Smaller projects before and after
 - ▶ Ongoing ramp closures for interim improvements this summer
- ▶ 2nd Street On-Ramp Southbound
 - ▶ Spring-Summer 2020

2nd Street Ramp Video



HOME

ABOUT ▾



RESTORE THE CORRIDOR
WILMINGTON

STAY INFORMED ▾

CONTACT US

Background/Overview

Timeline

Project Photos

Frequently Asked
Questions (FAQs)

Frequently Asked Questions (FAQs)

What is Restore the Corridor Wilmington?



Why is the project needed?



Is I-95 being widened?





Questions?

 **e-mail:** info@restorethecorridor.com

 800.652.5600 or 302.760.2080



2020-2021 Freight Studies

James.Galvin@doverkentmpo.org

2020-2021 Dover/Kent MPO Freight Studies

- FY 2020 Studies Request Selection and Prioritization
 - All member communities were invited to suggest ideas
 - Those willing to contribute 10% of the study cost were given priority
 - Of the 5 that were successful, three were related to freight movement:
 - Air Cargo Employment Center
 - East-West Freight Corridors Study
 - Harrington Intermodal Freight Terminal Feasibility Study
- FY 2021 Studies
 - 20% Contribution given priority
 - Of the 5 that were successful, one was freight related
 - Truck Parking Study that was ultimately handled through WILMAPCO

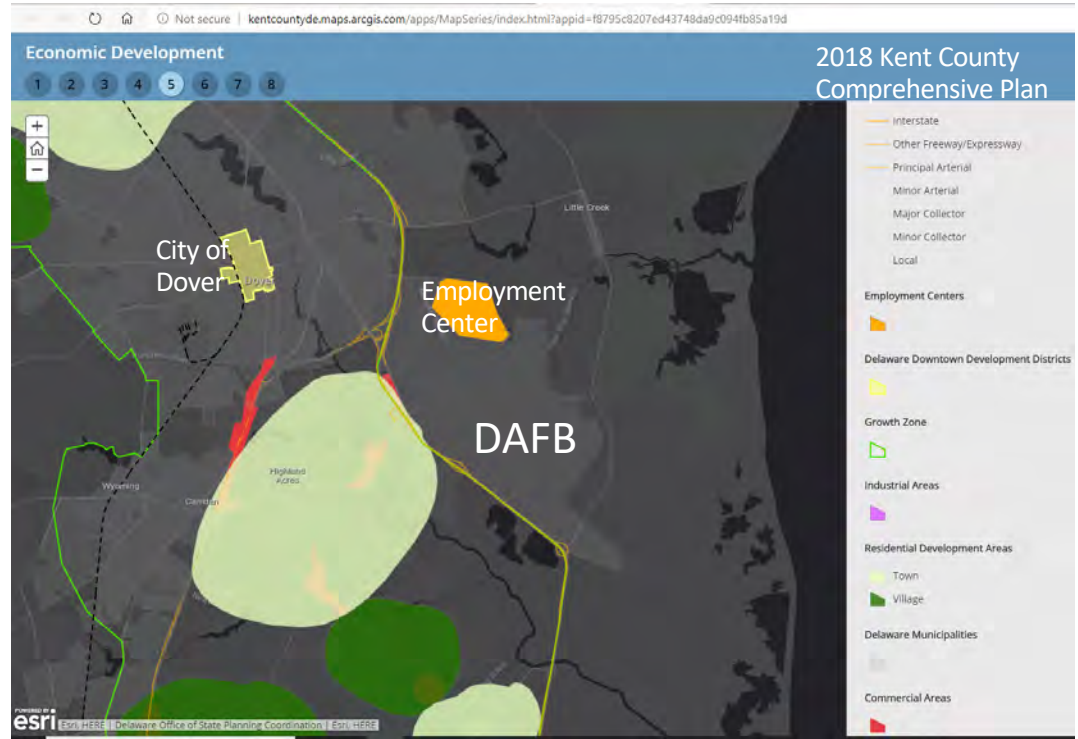
Dover Freight Management-Air Cargo Study

Sponsored by Kent County and the Kent Economic Partnership

A Study to identify freight access to the Air Cargo ramp and to extend Air-related uses into the area between the Dover Air Force Base and South Little Creek Road

Study awarded to Century Engineering to be completed by October, 2020

Study is now to include consideration of a connection between the Air Cargo Employment Center and Garrison Oak Technology Park





Air Cargo Employment Center

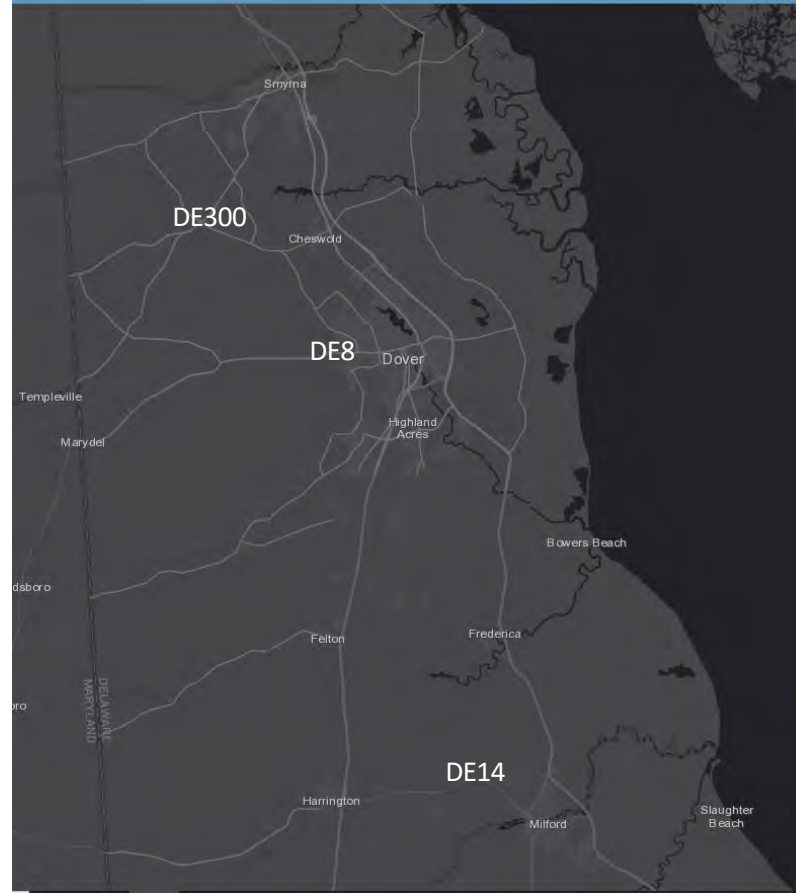
2019 Kent County East/West Truck Freight Route Feasibility Study

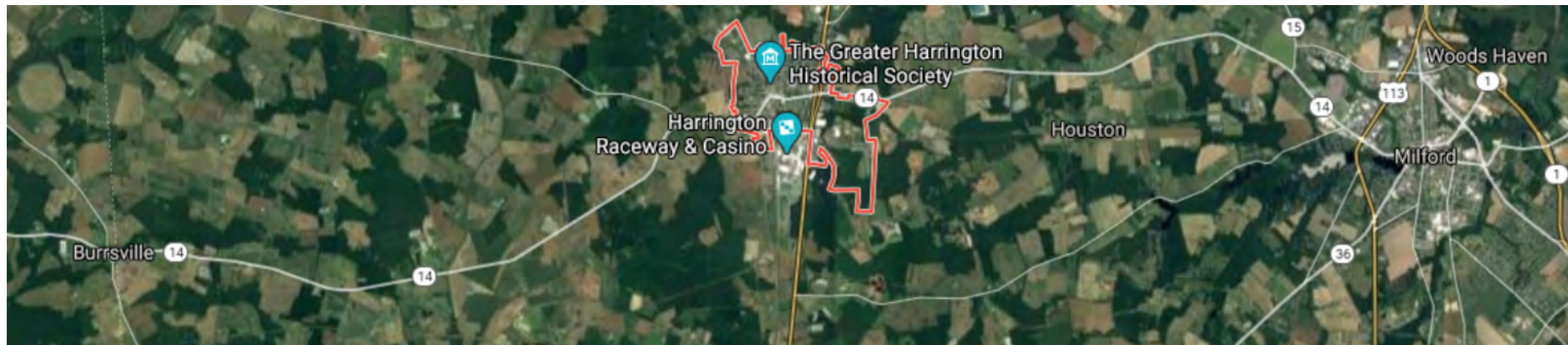
Sponsored by Kent County and the Kent
Economic Partnership

A study to identify the most efficient
corridors for freight through Kent County
that connects SR1 to US301. The study was
limited to three corridors after consultation
between the Consultant WRA and the
sponsors; DE300, DE8, and DE 14.

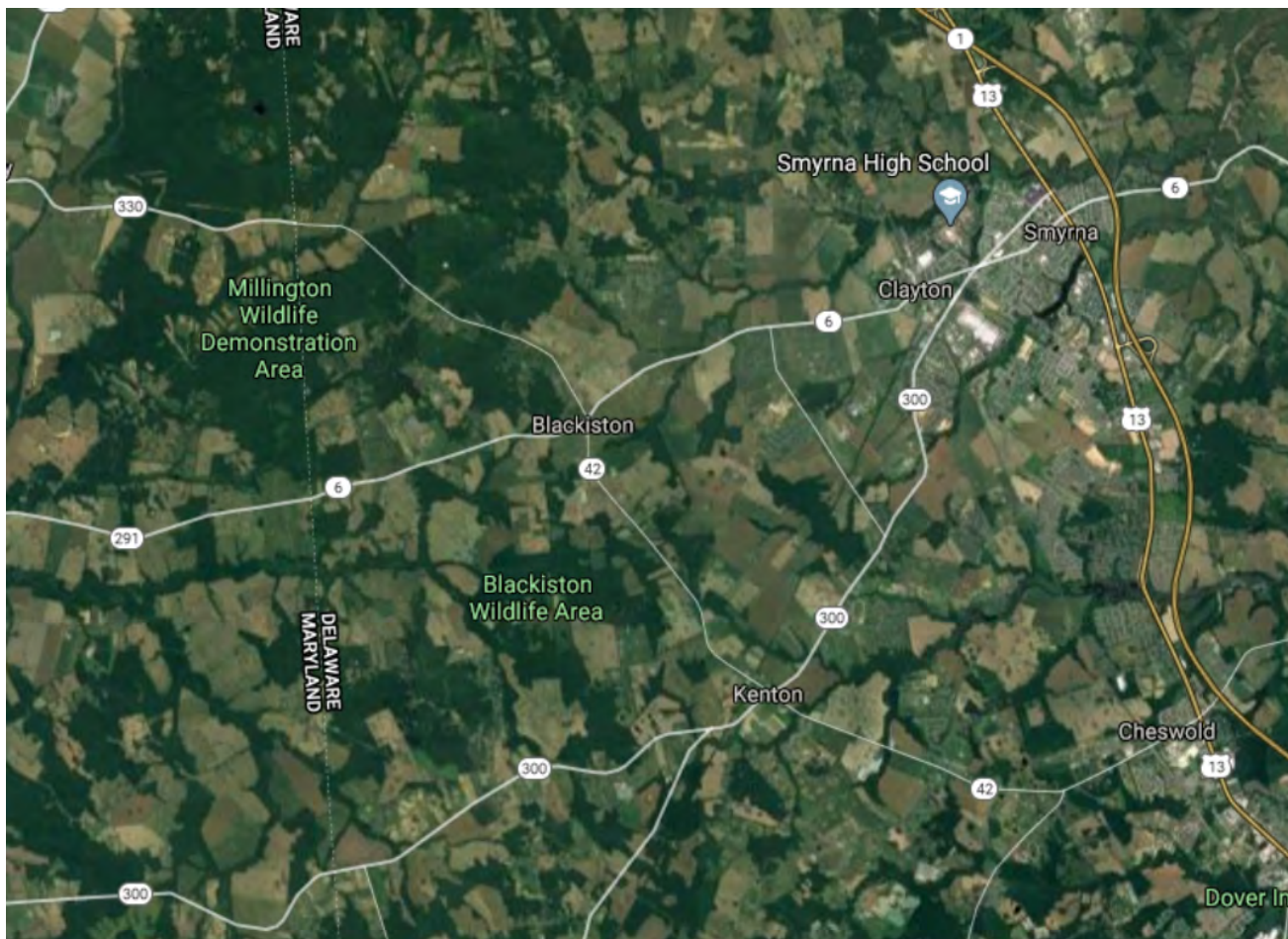
WRA is to complete the study by May 2021.

Results of the Study will identify facilities
that require improvements and points of
negotiation with Maryland to connect a
freight corridor from Kent County to US 301.





East-West Freight Corridors-DE8 and DE 14



East-West Freight Corridors-DE300

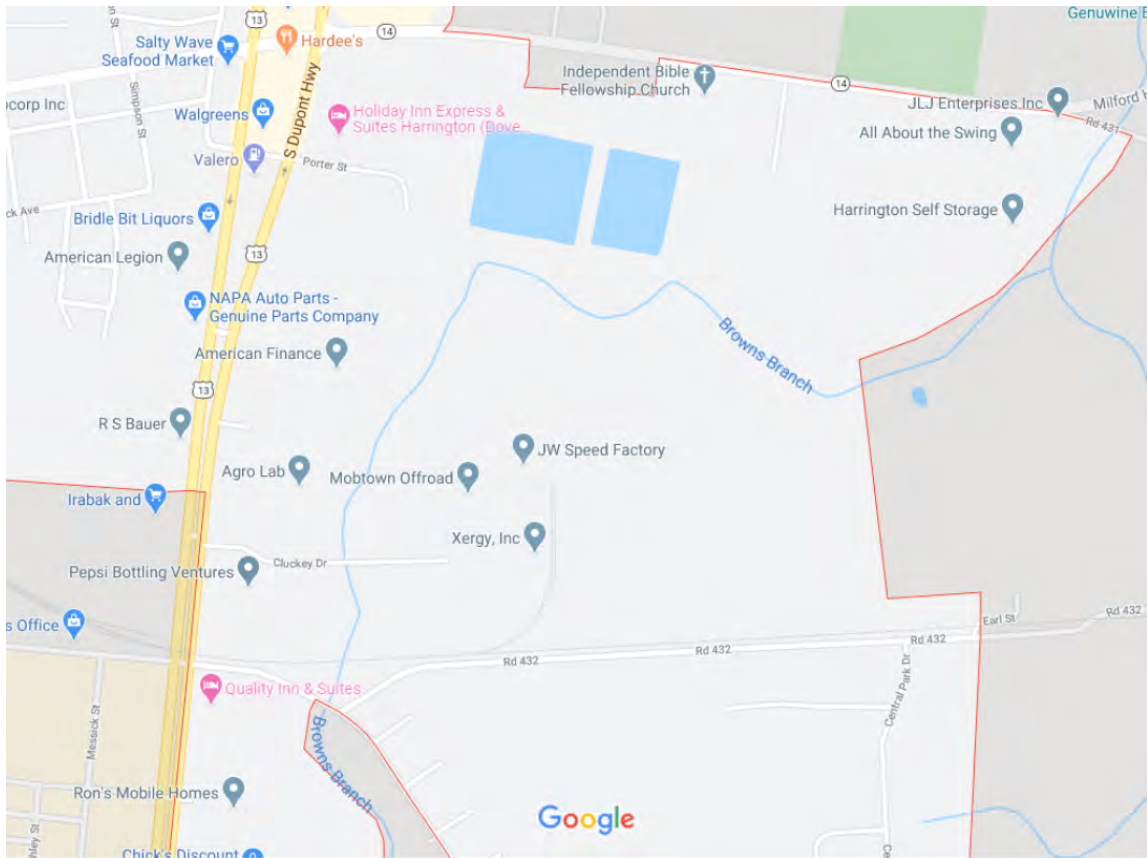
Harrington Intermodal Freight Terminal Feasibility Study

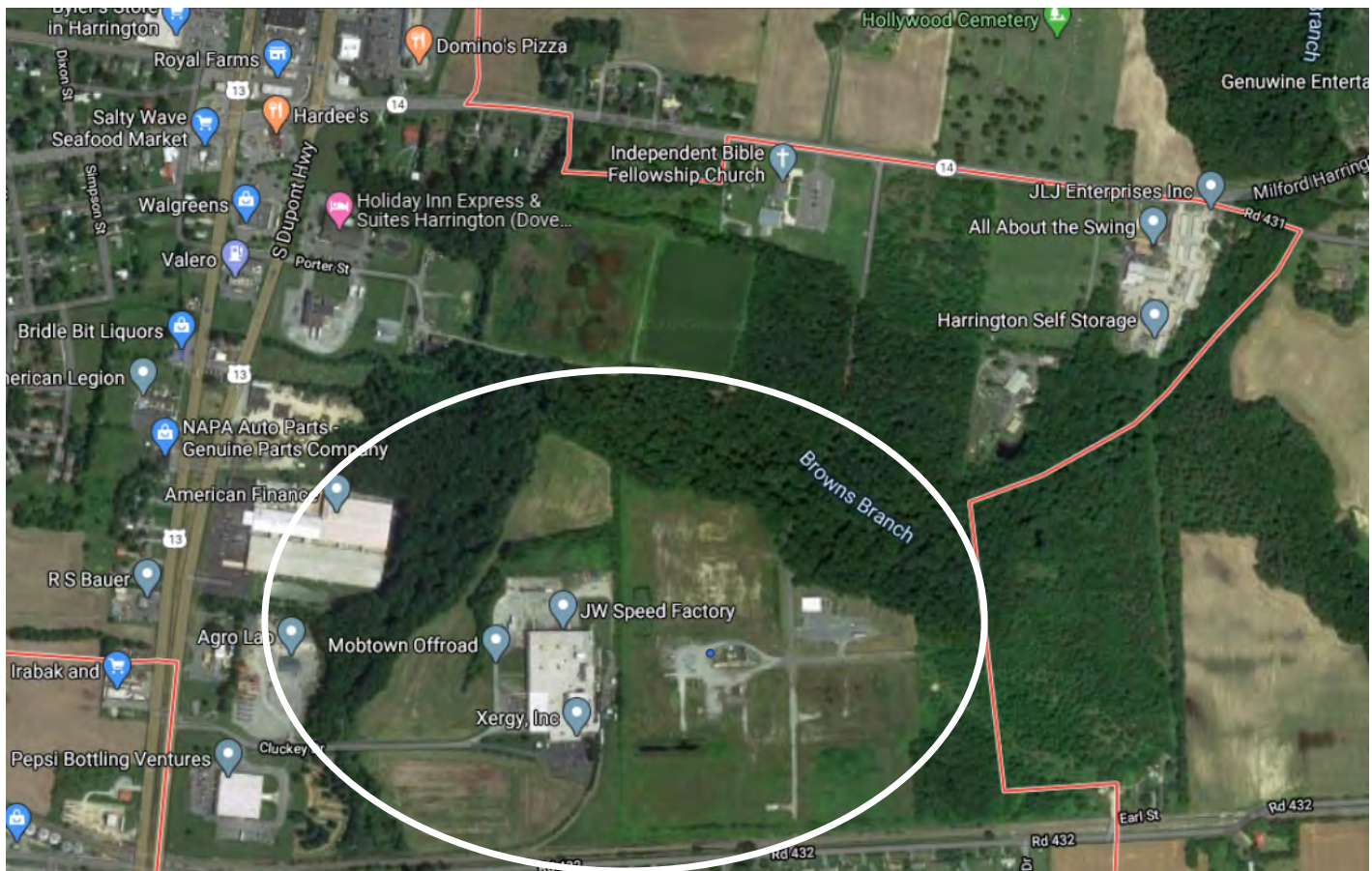
Sponsored by the City of Harrington and supported by the Kent Economic Partnership

Offering the opportunity for rail sidings to three manufacturing/warehousing parcels adjacent to rail facilities East of US13. Parcels include existing buildings with sidings and vacant land ready to develop

WRA is to complete the study by March 2021 but has been delayed.

The MPO study is proceeding as City-sponsored infrastructure studies and improvements are being considered.





Harrington Intermodal Freight Terminal Feasibility Study

Dover/Kent County MPO Freight Planning

Dover / Kent County MPO Freight Planning Initiatives (Summer Freight Summit 2020)

Initiative	Project start date	Project end date	Status as of 6/5/20
Innovation 2045 MTP Update	November 2019	January 2021	Freight info in Chapter II (Study area and projected conditions), Chapter IV (Strategies) and Chapter VI (Financially reasonable projects).
			MTP Project cost estimates by end of July 2020
			Air Quality Analysis July-August 2020
			Public Workshop, Meetings August-October 2020
Harrington Intermodal Freight Terminal Feasibility Study.	July 2019	March 2021	The Freight Terminal Feasibility Study in Harrington addresses leveraging rail freight use along several large tracts of land for warehousing in addition to a potential truck transportation hub.
			Data Collection (trip generation) and conceptual alternatives by September 2020
			Public engagement by November 2020
			Draft study March 2021
2019 Kent Co. East / West Truck Freight Route Feasibility Analysis Study	July 2019	May 2021	The Kent County East/West Freight Corridor Study looked at three east/west road corridors (one in the northern sector of Kent County (Route 300); one in the center of Kent County (Route 8); and one in the southern sector of Kent County (Route 14). These three routes would traverse into and out of Maryland, linking into US Route 301.
			Data Collection and Existing Conditions by August 2020
			Community engagement and key issues by December 2020
			Draft Study May 2021
Dover Freight Management – Air Cargo Study	July 2019	October 2020	Purpose of the study was to analyze options to facilitate the movement of vehicles, including large trucks moving freight, between the existing regional highway network within the area and the Civil Air Terminal at the Dover Air Force Base (CAT), particularly the “last mile” of travel. Modified (FEB 2020) to include analyzing improved connections between the CAT and the Garrison Oak Technology Park (Garrison’s) to the north. Linking the CAT and Garrison’s will occur through upgrades to existing roadways. This will enable the potential for Garrison’s to provide warehousing capabilities for the expansion of the CAT. This may attract and benefit potential future Fixed Base Operators.
			Data Collection and Alternatives June 2020
			Public Workshops July and September 2020
			Draft Study September 2020

DeIDOT FY 2021 Freight Work Plan



Support Our MPO Partners

- ▶ Support Unified Planning Work Program (UPWP) studies
 - ▶ Our MPO partners are speaking about their efforts today.
 - ▶ Provide staff support for data analysis and document review.
 - ▶ Update Freight Plan projects as needed, based on results of studies.

Long-Range Planning

- ▶ Long Range Transportation Plan (LRTP)
 - ▶ Annual updates to freight goals, objectives, and strategies
 - ▶ Planning & Land Use, Freight Movement, Aeronautics, etc.
- ▶ Continue Delmarva Freight Plan Implementation
 - ▶ Monitor projects in our CTP based on the freight investment plan
 - ▶ Align goals and objectives with DeIDOT's LRTP



Regulatory Compliance

- ▶ Senate Bill 131:
 - ▶ Signed August 2019 - Governor Carney signs bill requiring DeIDOT to choose ideal locations for truck height monitoring equipment
 - ▶ Aims to prevent semi-trucks from using roads they are prohibited on
 - ▶ Initial proposed locations are currently under review by DeIDOT
- ▶ Update Delaware's National Network designations

Data and Analysis

- ▶ Evaluation of Streetlight data
 - ▶ Potential purchase of data packages
 - ▶ Work with MPO partners on the cost/benefit of data
- ▶ Data inventory of Freight Restrictions in DE
 - ▶ Scope of Work is currently in development
 - ▶ Consolidate multiple maps, sources of data on current restrictions

Truck Parking Study

▶ Delaware Truck Parking Study (6 Tasks)

Task 1: Current Overview/Discussion of Issues (2 months)

- ▶ Millions of vehicles use Delaware roads per year (especially I-95 and I-295 corridor)
- ▶ Shortage of truck parking has several potential risks (legally, safety, etc.)
- ▶ Looking at National/neighboring state trends

Task 2: Focus Group Meeting (3 months)

- ▶ Bring a team together to discuss current freight data

Task 3: Overnight Parking Analysis (3-4 months)

- ▶ Analyzing parking trends (designated/undesignated, cluster areas, etc.)

Task 4: Public Workshop (2 months)

- ▶ Present study findings with general public through organized workshops
- ▶ Listen to recommendations given by the public

Task 5: Strategies and Recommendations and Draft Report (2 months)

- ▶ Based on previous tasks, the development of improvement strategies occurs (policies, capacities, land use, etc.).
- ▶ A draft is created

Task 6: Final Report

- ▶ A final report is presented showing proposed policies with estimated costs, an implementing agency and proposed location where improvements will occur.

Outreach

- ▶ Overhaul the DeIDOT Freight website
- ▶ Get more involved with our agency partners
- ▶ Develop a strategy for public awareness campaigns
 - ▶ Freight as a “good neighbor” concept
 - ▶ Potential for virtual engagement amid COVID-19

Freight



Section Home 

Information 

Contact Us 

Community Relations 

 302.760.2080

 800.652.5600

Questions?



Thank you!

Sam Sherman, Aeronautics & Freight Coordinator

samuel.sherman@delaware.gov, 302-760-2145



Freight Work Plan Discussion

- Any planning topics seem to be missing?
- What priorities should be stressed?
- What's the status of the Delmarva Freight Plan update?
- How can folks be engaged?

DELMARVA FREIGHT PLAN

The Delaware Freight Plan with Regional Coordination



#FreightFriday Updates and Schedule

- Complete evaluation for today's session
- June 12 – Freight Operations (live webinar)
 - Delmarva Central Railroad Updates
 - Traffic Volumes during COVID-19
 - New Hours of Service Rule for Drivers of Commercial Vehicles

#FreightFriday Updates and Schedule

June 19 – Shipper Updates (recorded)

- Interviews with Dot Foods and other shippers, presented on IPA's *First State Insights* podcast (soundcloud.com/first-state-insights/)

June 26 – Market Trends (live webinar)

- Featuring Delaware Valley Regional Planning Commission presentation



Contact me with questions, comments, and offers to be involved

Troy Mix

Associate Director, Institute for Public Administration
Biden School of Public Policy & Administration

mix@udel.edu | 302-831-6191

www.ipa.udel.edu

Delmarva #FreightFriday

Thank you from your host and
Delmarva Freight Working Group
partners!

UD Institute for Public Administration

In partnership with:

Delaware Department of Transportation

Dover/Kent County MPO

Salisbury/Wicomico MPO

WILMAPCO

