



Dover AFB and the 436th Aerial Port Squadron

"Super Port"



Overview



- Mission
- Role of the “Super Port”
- Facts
- Summation



“Super Port”



Super Port's Mission



Safely and efficiently processes cargo and passengers for multi-modal movements supporting global operations.

Essentially:

**Train, equip & deploy personnel
and**

Truck-in, Air-out...Air-in, Truck-out...

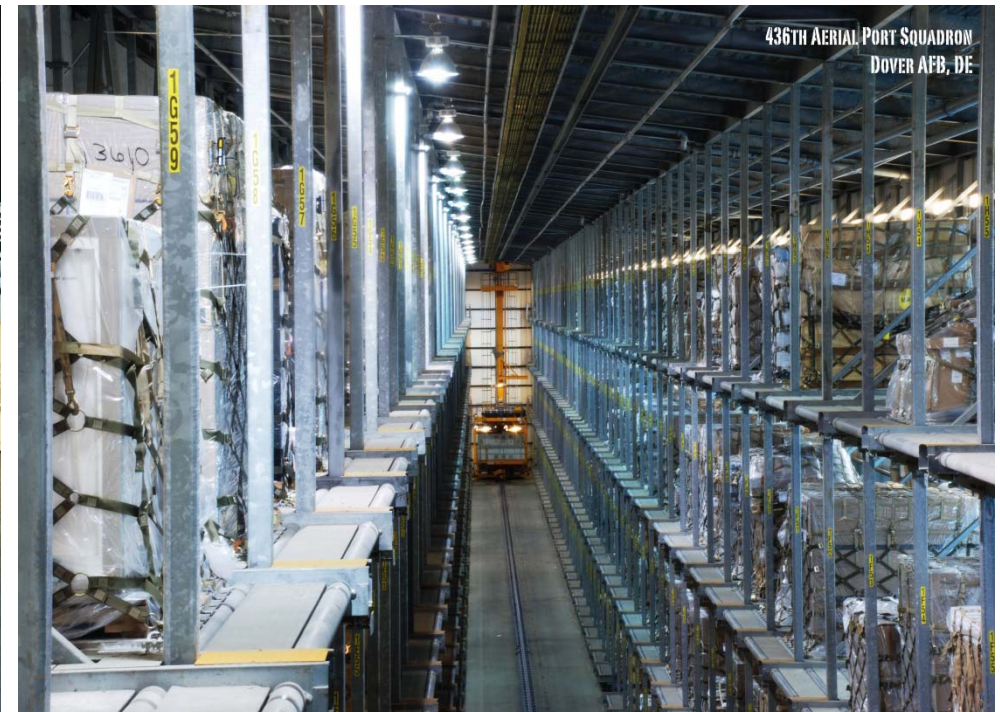
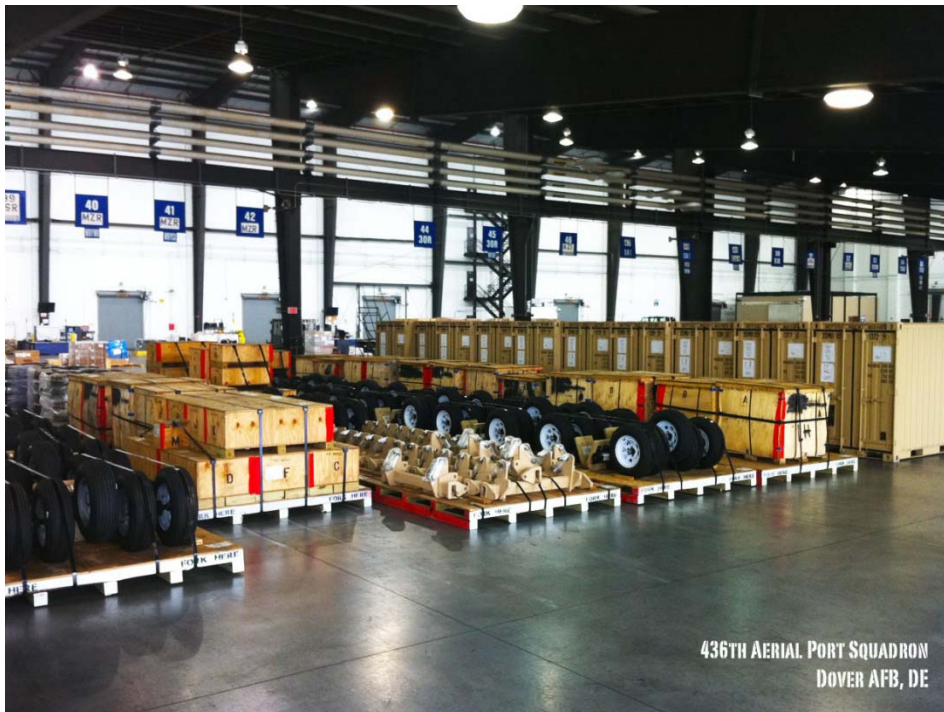
“Super Port”



Our Role



- Largest Aerial Port in the Department of Defense
- One of only 3 Aerial Ports worldwide with a fully automated material handling system
- Largest infrastructure and throughput capacity in the US
- Largest capacity for Arms, Ammunition & Explosives



“Super Port”



Aerial Port Facts



■ Facilities valued at \$125M

- State of the art Freight Terminal
 - ◆ \$82.6 million facility; multi-modal
 - ◆ 355,000 + sq/ft
 - ◆ Improved MMHS system; \$22M/fully automated
 - ◆ Cargo surge capability of + 60%
- 22,500 sq/ft In-Transit Munitions Storage Facility
 - ◆ Largest throughput capability in AMC
- 11,000 sq/ft Fleet Facility
- 35,000 sq/ft PAX Terminal

■ Vehicles: 163 (\$38M+)

- 116 (463L), 26 (GP), 21 (SP)

“Super Port”



Movement by Air

■ Last 5 years; aircraft / cargo tons / passengers

- 2010 - 10,647 / 218,952 / 33,738
- 2011 - 9,016 / 211,615 / 37,257
- 2012 - 5,919 / 124,448 / 24,818
- 2013 - 5,179 / 100,074 / 19,393
- 2014 - 4,770 / 79,364 / 19,068



“Super Port”



Ground Movements



- Last 5 years; trucks / pieces / tons
 - 2010 - 21,734 / 270,909 / 149,333
 - 2011 - 22,205 / 291,309 / 165,172
 - 2012 - 19,133 / 221,622 / 195,807
 - 2013 - 12,358 / 129,223 / 118,719
 - 2014 - 9,496 / 82,566 / 30,655



“Super Port”



Commodities



- **Anything & Everything**
 - **Bolts & washers to armored vehicles**
 - **General freight to high explosives**
 - **Hazardous materials & transportation protected cargo**
 - **We're not Fed Ex, we're more!**

- **Missions supported:**
 - **POTUS**
 - **Department of Defense**
 - **Department of Homeland Security**
 - **Federal Emergency Management Agency**
 - **& more**

“Super Port”



Super Port!



Questions?



“Super Port”