

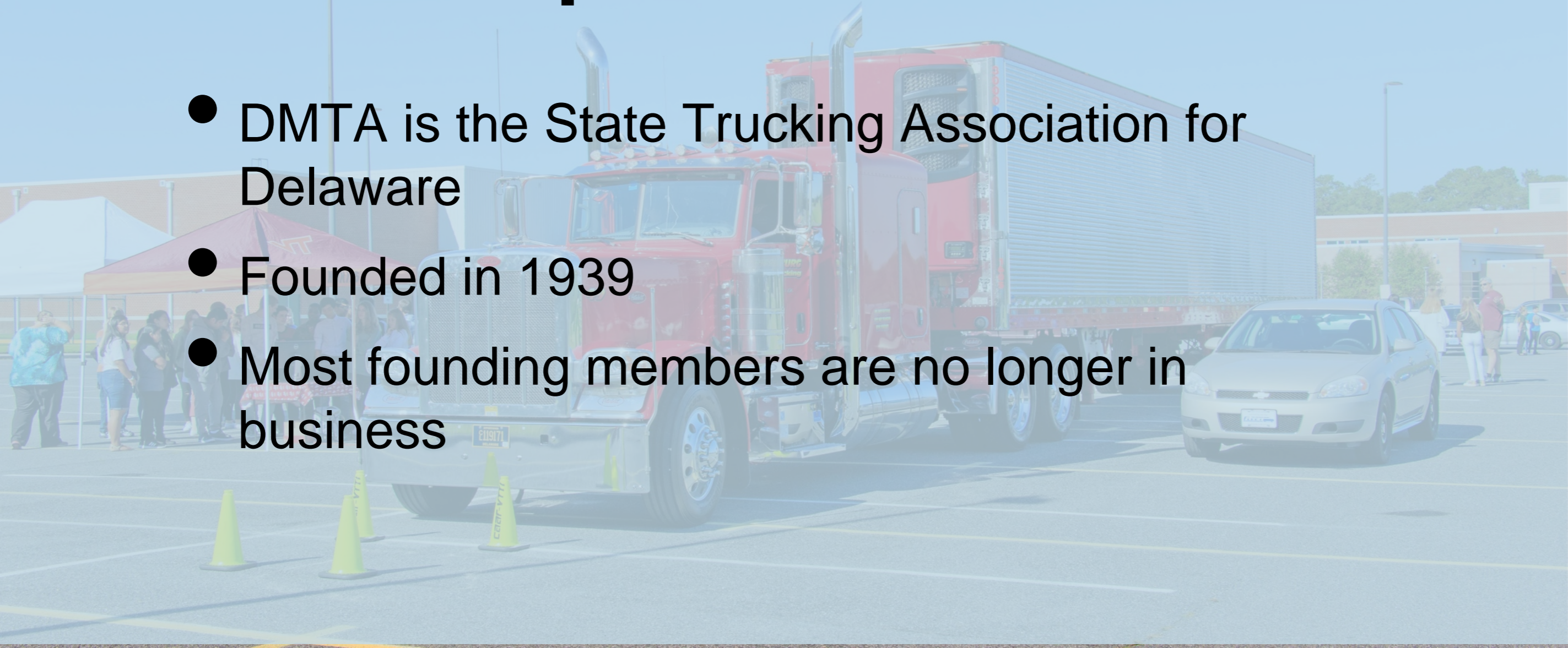
Winter Freight Meeting 2019

Trucking Industry Update



Delaware Motor Transport Association

- DMTA is the State Trucking Association for Delaware
- Founded in 1939
- Most founding members are no longer in business



History

- In 1939 John W. Burris was active in the founding of DMTA and was elected to the first board of directors



History

- Today, Burris Express Company still is a member of DMTA



Membership Breakdown

- Membership by category
 - Motor Carriers – 61%
 - Private carriers – 19%
 - For-hire carriers – 42%
 - Allied Members (non-carriers) – 39%
 - Parts, service, supplies, etc. – 28%
 - Manufacturers, dealers, leasing companies – 11%

Trucking in Delaware

- DMTA continues its mission of serving Delaware's trucking community
- 2,270 trucking companies in Delaware
- Most are small and locally owned
- They are served by a wide range of supporting businesses



Trucking in Delaware

- Trucking provides 1 in 22 jobs in the state
- 94 percent of the manufactured tonnage in Delaware moves by truck
 - 60,273 tons per day
 - 3,013 truckloads per day



Safety Matters

- DMTA members put safety first through
 - Improved driver training
 - Investment in advanced safety technologies
 - Participation in industry safety initiatives such as “Sharing the Road”

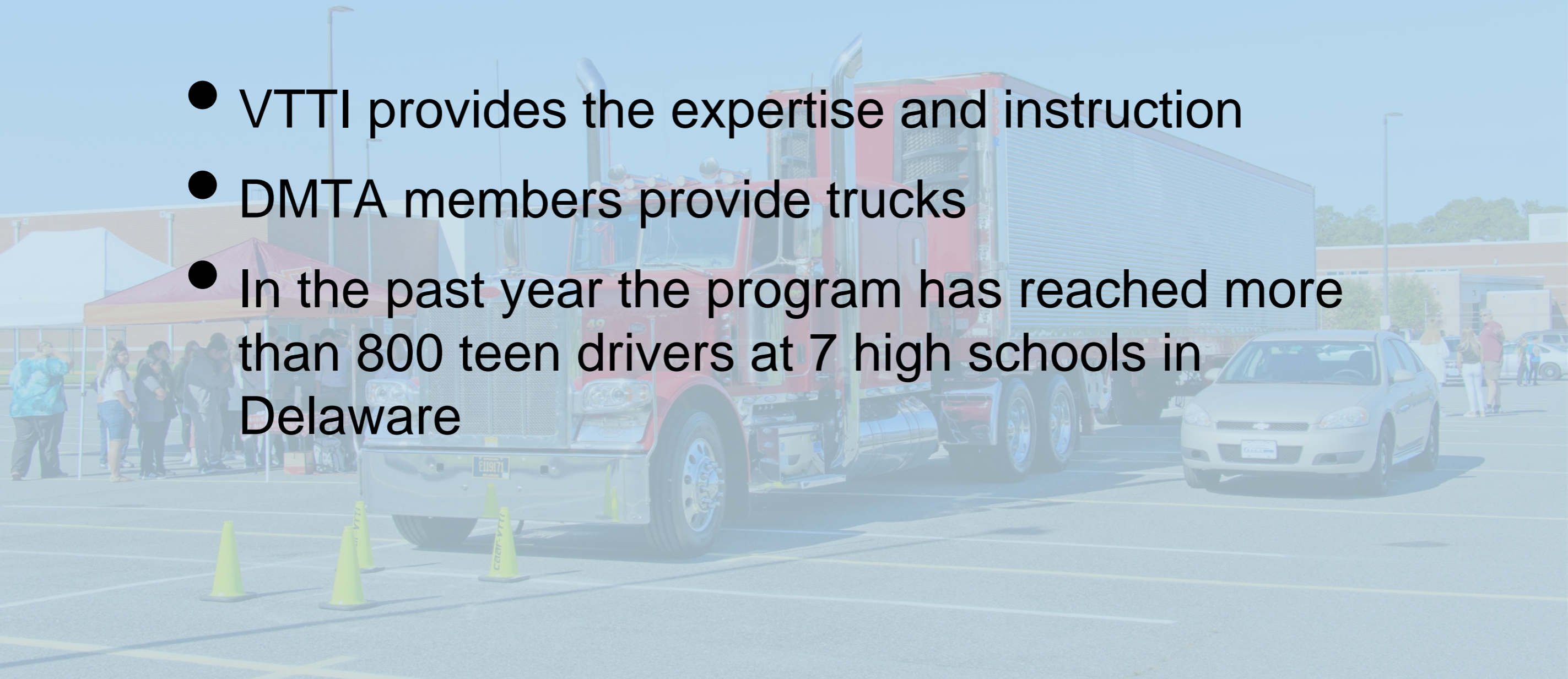


Sharing the Road

- More than three-quarters of crashes and near-crashes involving cars and heavy trucks are caused by car drivers
- To address the problem Center for Truck and Bus Safety at Virginia Tech Transportation Institute developed a “Sharing the Road” program for teen drivers
- DMTA was asked by the Center for Truck and Bus Safety to assist with their Sharing the Road program for Delaware teen drivers

Sharing the Road

- VTTI provides the expertise and instruction
- DMTA members provide trucks
- In the past year the program has reached more than 800 teen drivers at 7 high schools in Delaware



Sharing the Road

Sussex Central
High School



Sharing the Road

Driver ed teacher
gets acquainted
with the No-Zone



Truck Parking







**NO TRACTOR
TRAILER
PARKING**

**VIOLATORS WILL
BE TOWED AWAY AT
VEHICLE OWNERS
EXPENSE**

**BLUE HEN
CORPORATE CENTER**

TOWING ENFORCED

 
**ILLEGALLY PARKED CARS
WILL BE TOWED AWAY
AT OWNER'S EXPENSE!**

**McKinney's Towing
5336 N. DuPont Hwy
Dover, DE 19901
302-734-7584**

**CARS REDEEMED
7AM-7PM, MON-FRI,
9AM-4PM, SAT-SUN**





QUESTIONS?



