

KENNETT AREA

Freight Transportation Study

Delmarva #FreightFriday
June 26, 2020



Promote freight and aviation considerations in the planning process to encourage the development and preservation of safe, efficient multimodal transportation systems that maximize Greater Philadelphia's position in the global economy

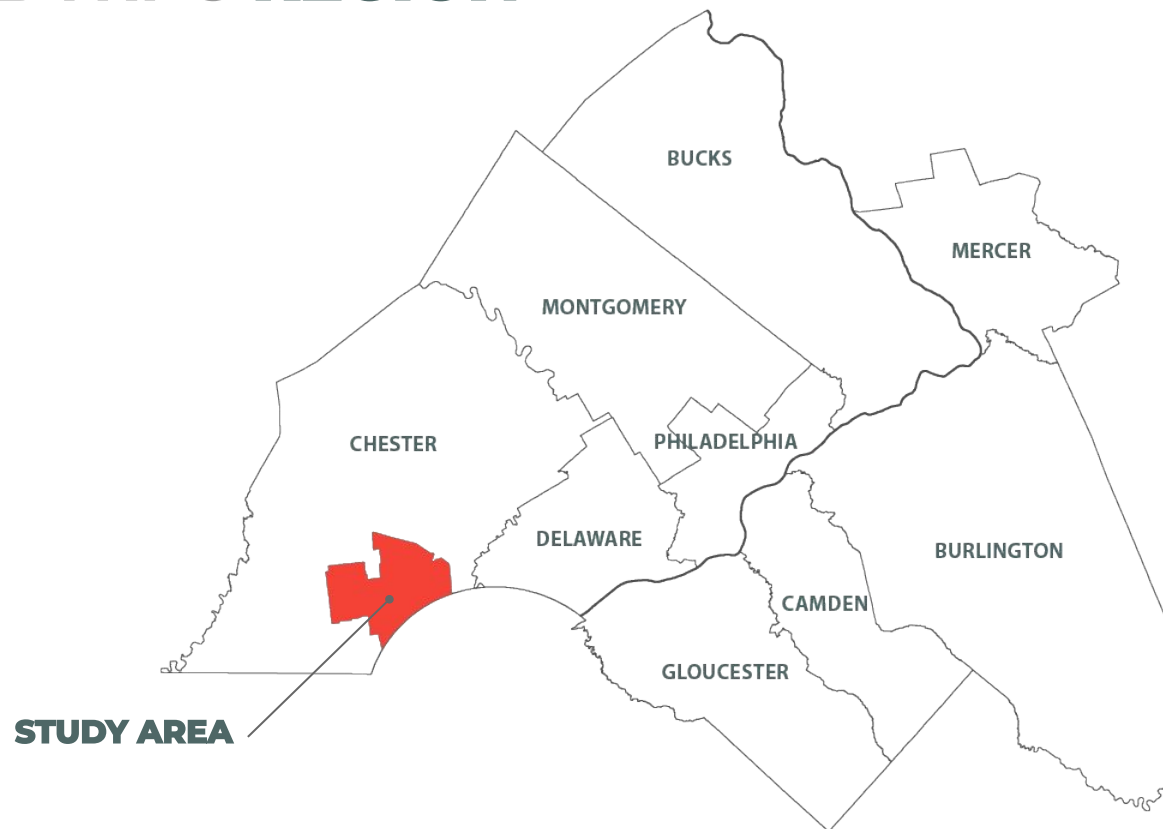


DVRPC
FREIGHT

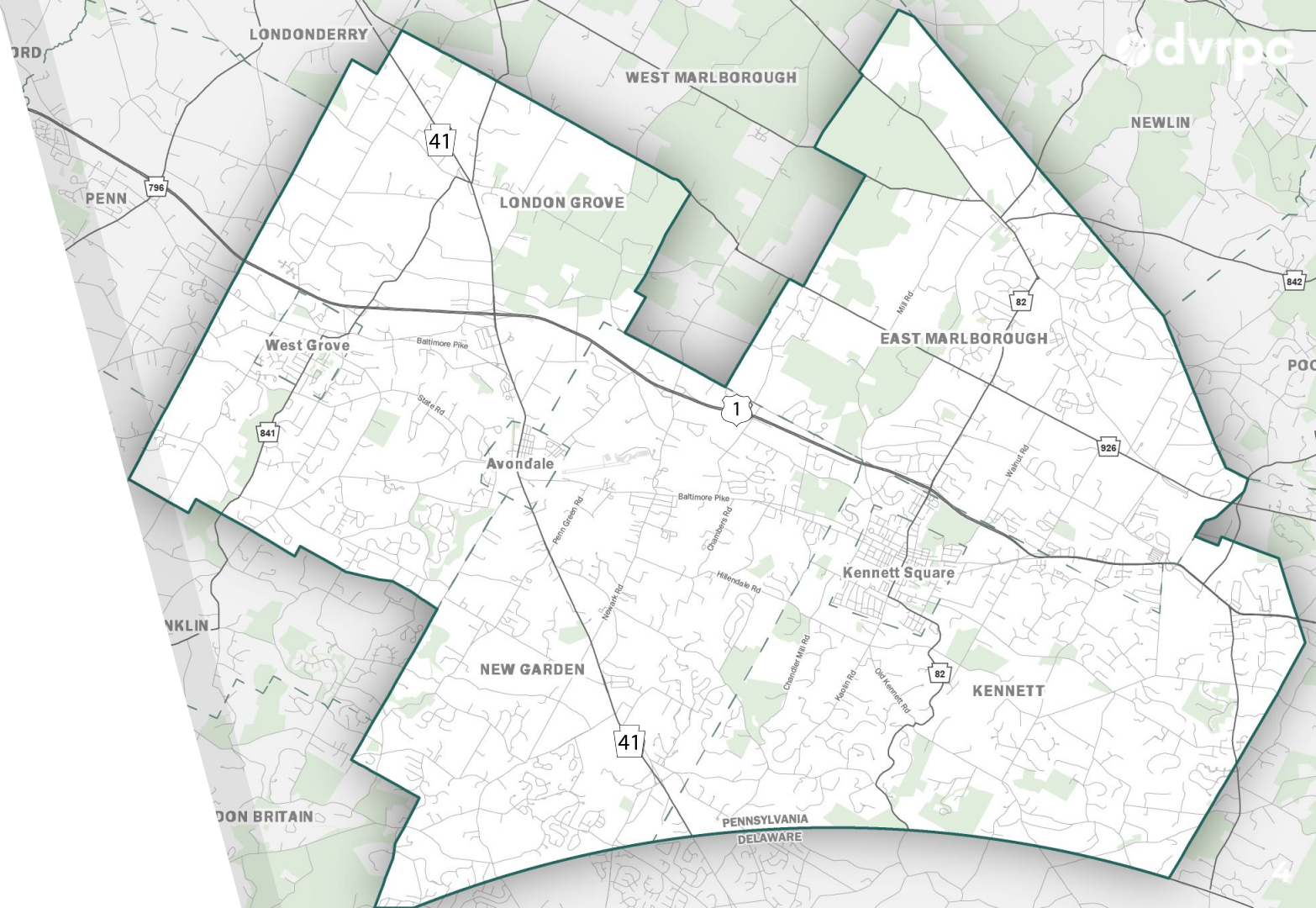
- ▶ Local and Regional Technical Studies
- ▶ Delaware Valley Goods Movement Task Force
- ▶ PhillyFreightFinder - Freight Data Program

www.dvrpc.org/webmaps/phillyfreightfinder

DVRPC REGION



STUDY AREA



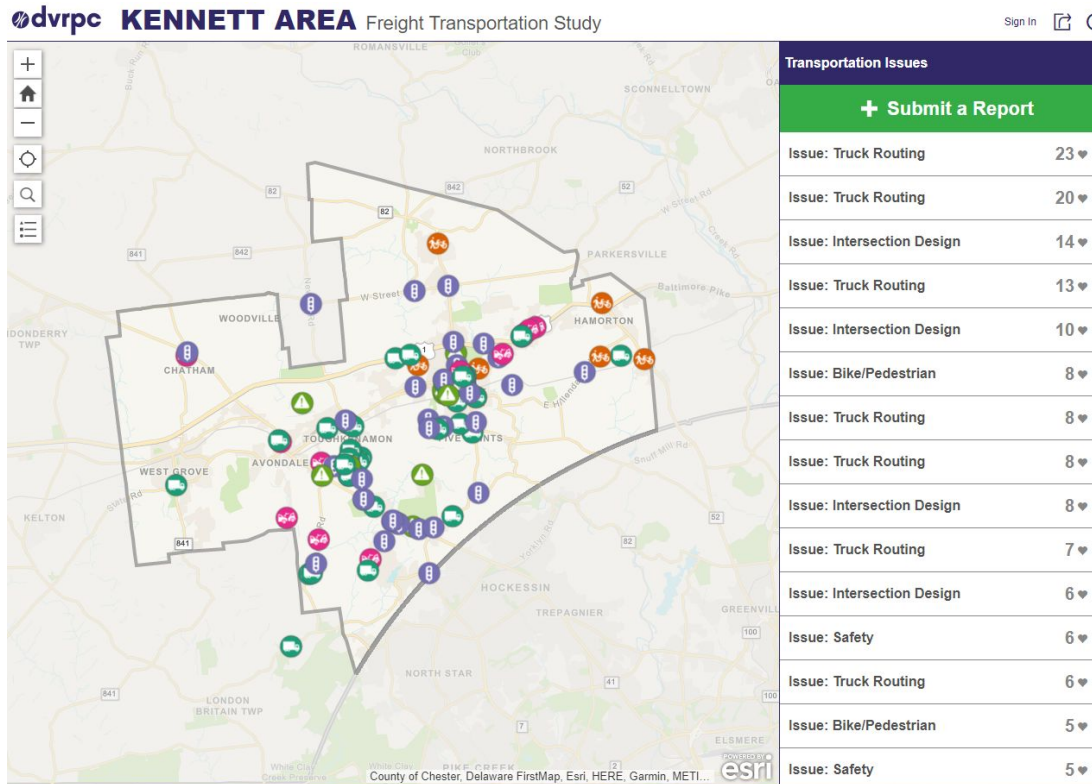
STUDY PURPOSE

Expand the economy by improving the movement of people and goods through an integrated multimodal transportation network while strengthening livable communities.

Identify strategies to address:

- ▶ Geometric constraints
- ▶ Bridge restrictions
- ▶ Truck movement/routing
- ▶ Historic resources

COMMUNITY OUTREACH



Source: DVRPC

NEEDS ASSESSMENT

OUTREACH HIGHLIGHTS

- ▶ Trucks on narrow rural roads
 - ▶ Kennett Borough - State & Union Streets
 - ▶ Safety concerns - truck activity in school zones
 - ▶ Truck volume and traffic speeds on PA 41
 - ▶ Need for pedestrian facilities
-
- ▶ Cyclists on rural roads
 - ▶ Truck routing equity

PROJECT GOALS

Identify strategies to:

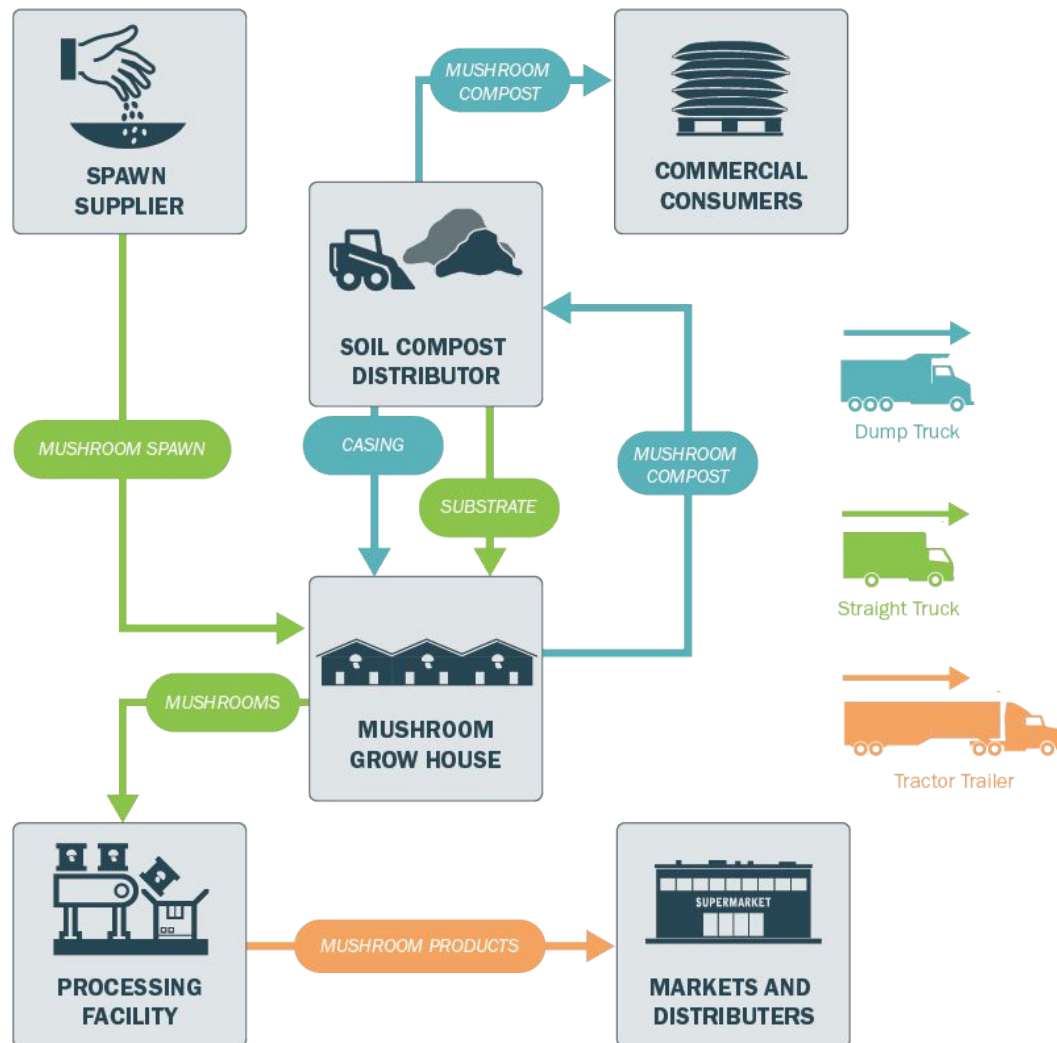
- ▶ Improve traffic flow
- ▶ Identify and improve truck routes
- ▶ Provide appropriate wayfinding
- ▶ Minimize conflicts and impacts of freight on other modes

EXISTING CONDITIONS ANALYSIS

ECONOMIC IMPACTS

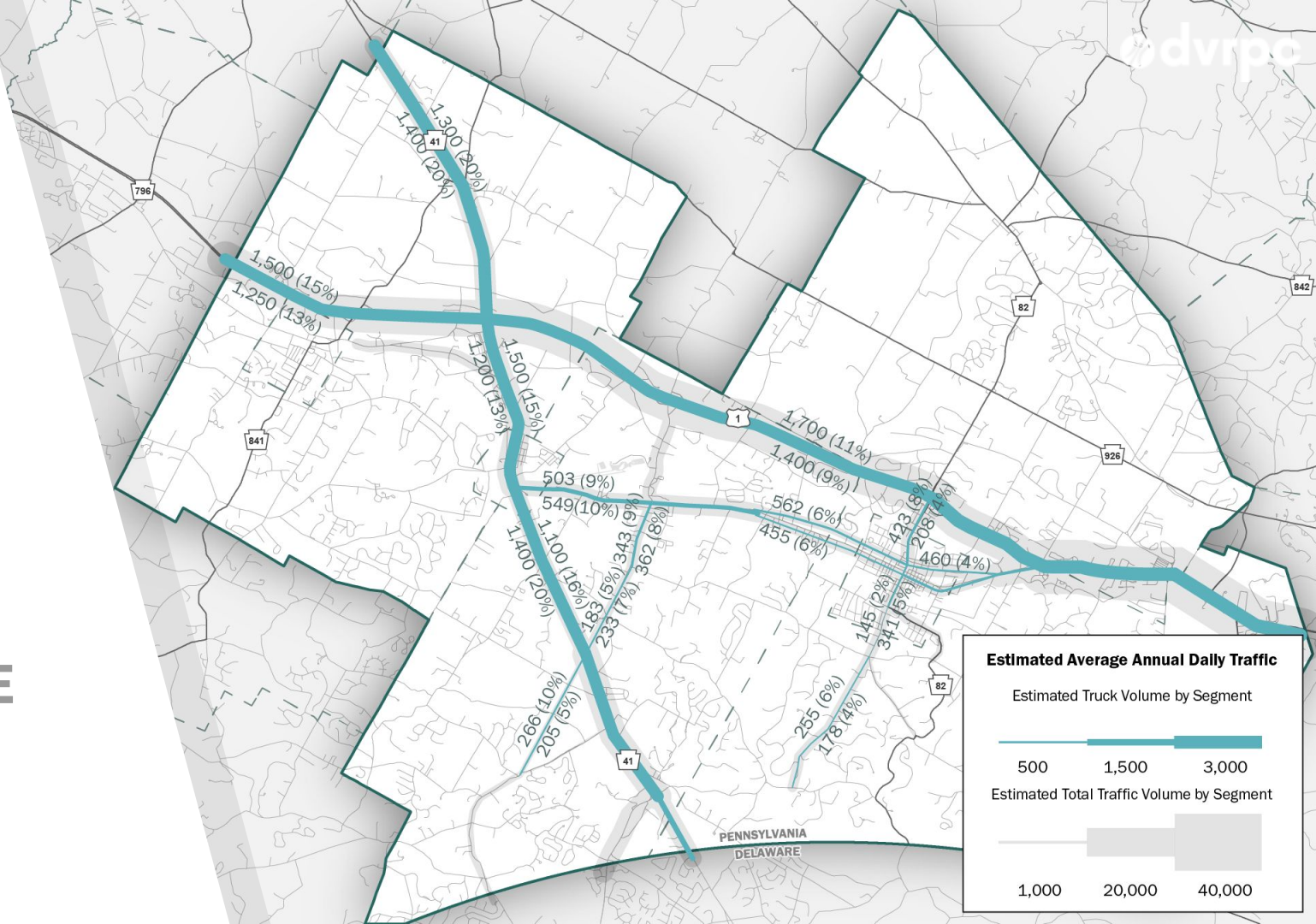
- ▶ \$764 M Total Economic Impact
- ▶ \$16.4 M in Tax Revenue
- ▶ 572 M Pounds of Annual Mushroom Crop (60% of National Sales)
- ▶ Supports 8,600 jobs



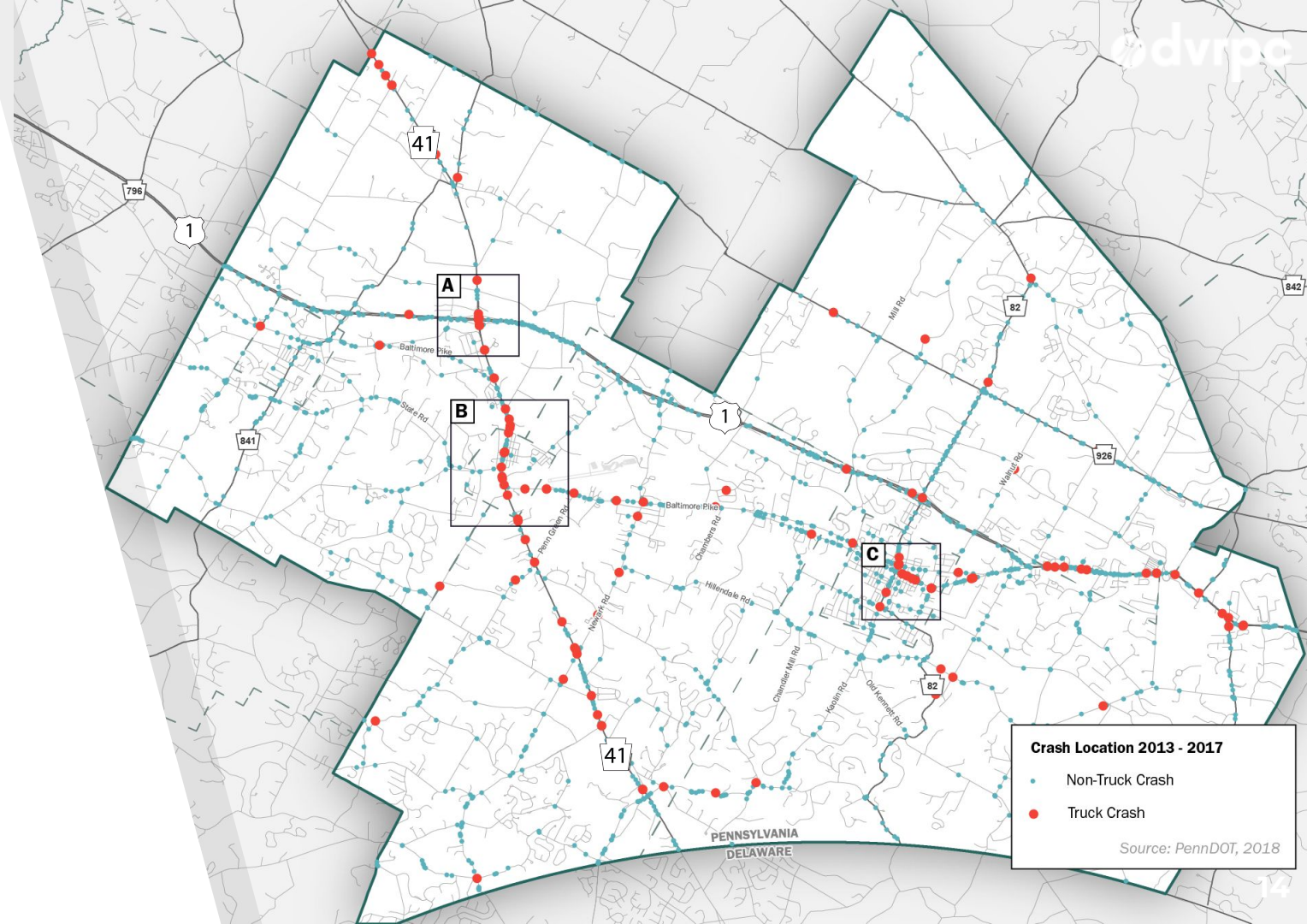




VOLUME TRUCK ACTIVITY



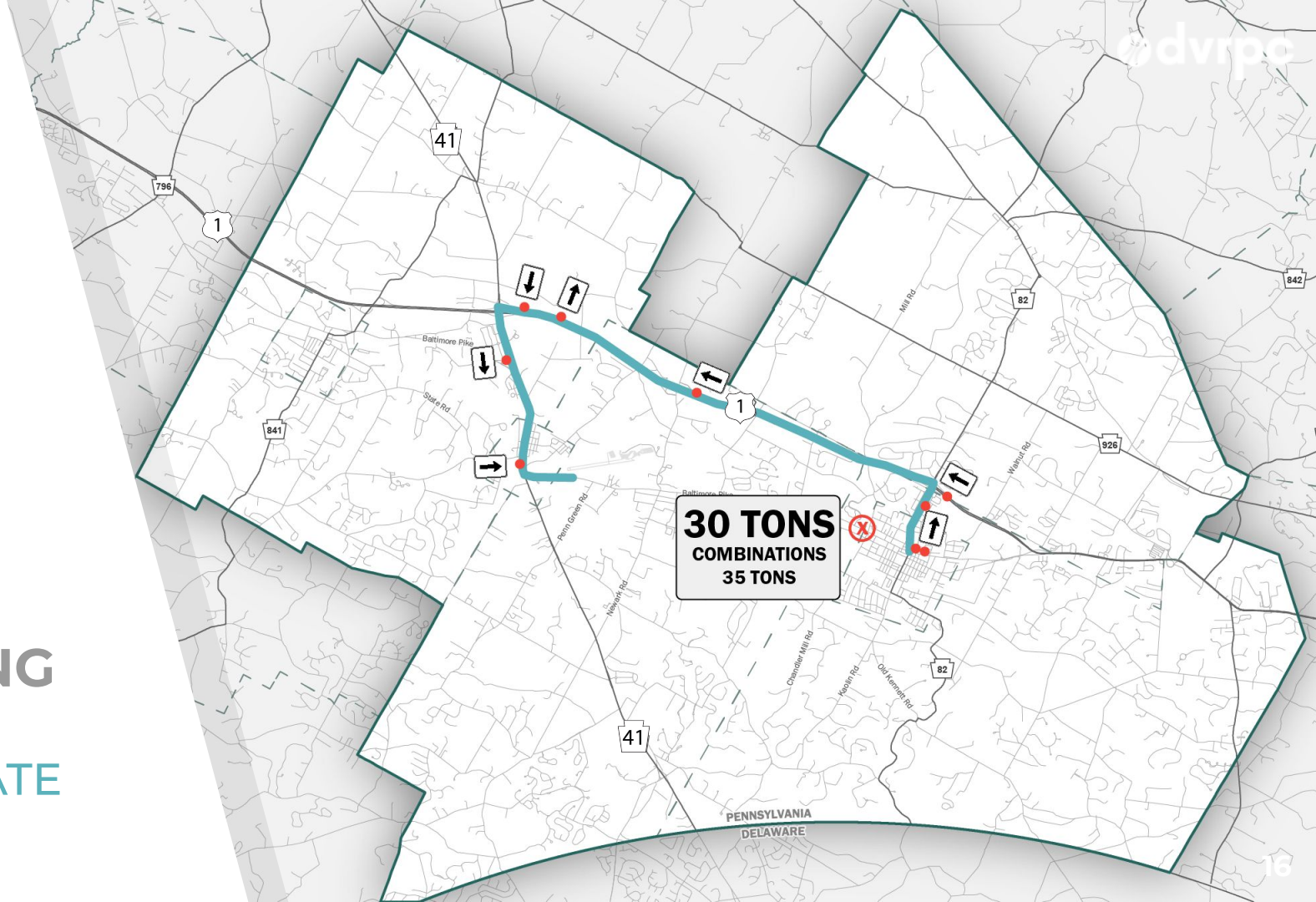
SAFETY TRUCK CRASHES



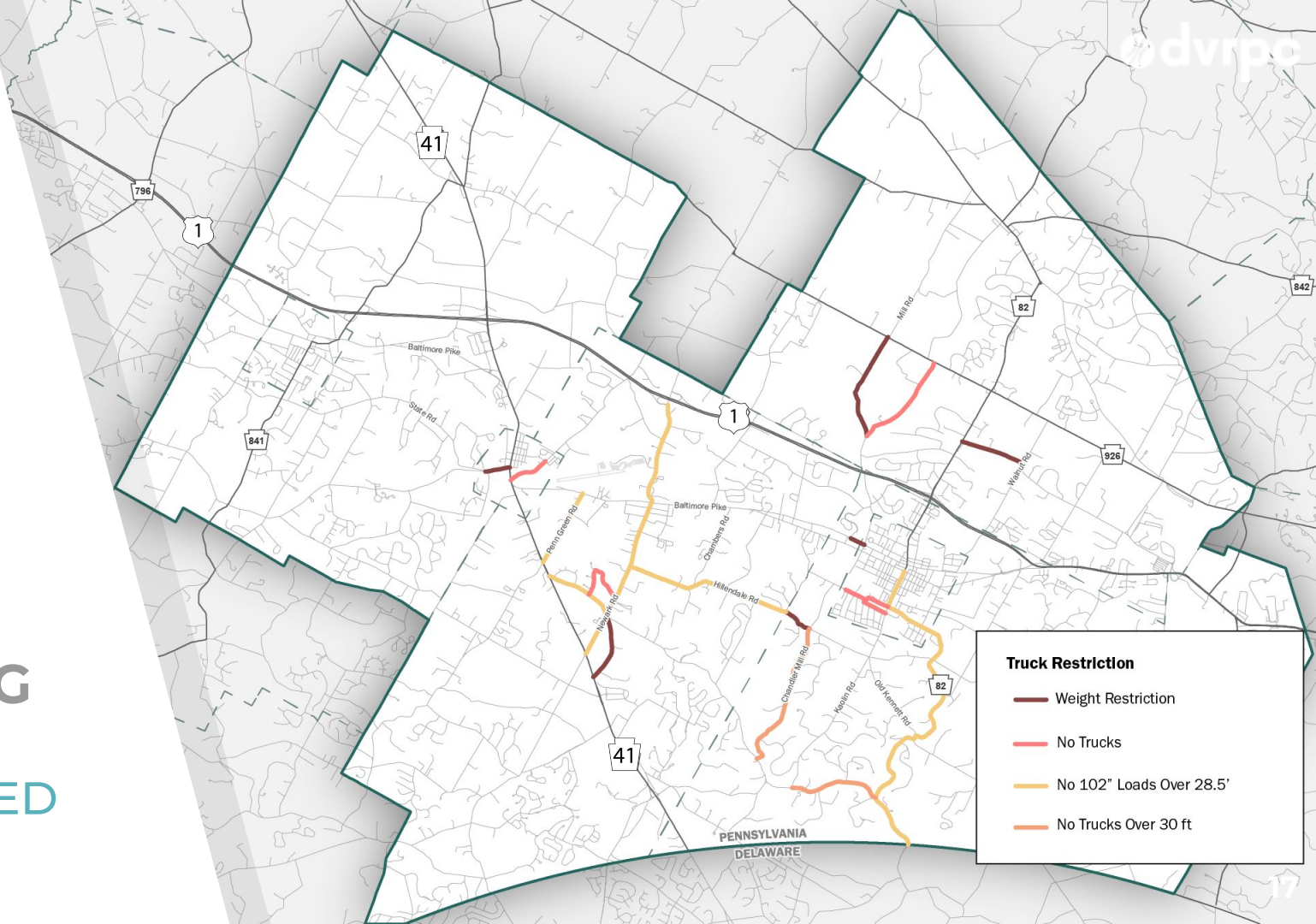
ROUTING STATE & UNION



ROUTING TRUCK ALTERNATE



ROUTING TRUCK RESTRICTED



REPORT RECOMMENDATIONS

REPORT **RECOMMENDATIONS**

- ▶ Implement traffic calming strategies
- ▶ Designate a local truck route network
- ▶ Improve wayfinding and directional signage

RECOMMENDATIONS

TRAFFIC CALMING

- ▶ Overhead Speed Display
- ▶ Median Gateways



RECOMMENDATIONS

TRAFFIC CALMING

- ▶ **Improve Uncontrolled Crossing Locations**
- ▶ High-visibility crosswalks
- ▶ Rectangular Rapid-Flashing Beacon (RRFB)



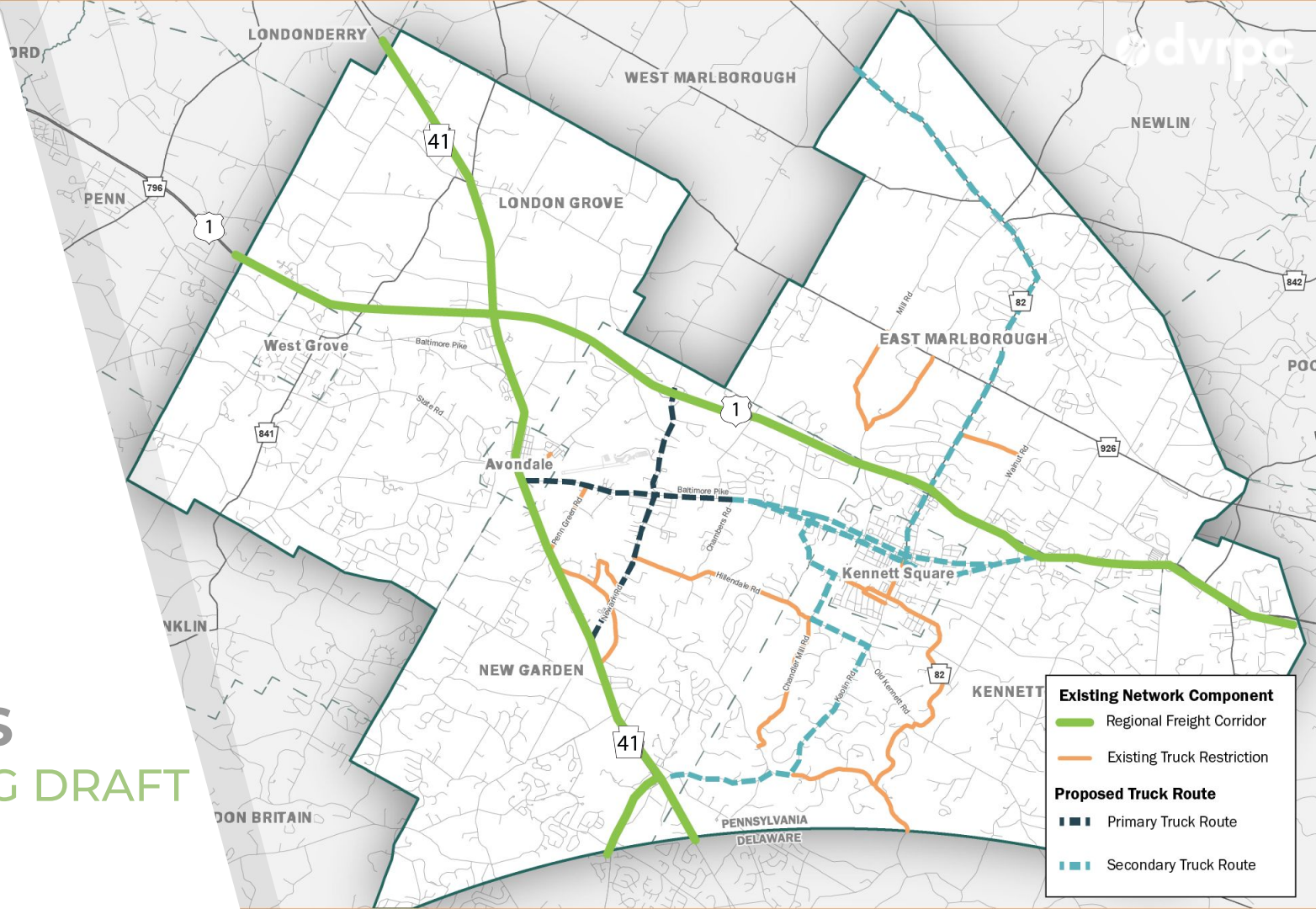
RECOMMENDATIONS

TRUCK ROUTE DEVELOPMENT

- ▶ **Form a Multi-Jurisdictional Work Group**

- ▶ **Identify Route Components**
 - ▷ Geometric Restrictions
 - ▷ Community Restrictions
 - ▷ Primary Freight Network
 - ▷ Secondary Freight Network

TRUCK ROUTES WORKING DRAFT



RECOMMENDATIONS

TRUCK ROUTE DEVELOPMENT

► **Network into Action**

- ▷ Wayfinding and Signage Plan (standardized)
- ▷ Update network database
- ▷ Communication materials to facilities
- ▷ Inform investment in bike/ped facilities

THANK YOU!

Questions/comments:

Kristen Scudder

kscudder@dvrpc.org

215.238.2939

Michael Ruane

mruane@dvrpc.org

215.238.2888