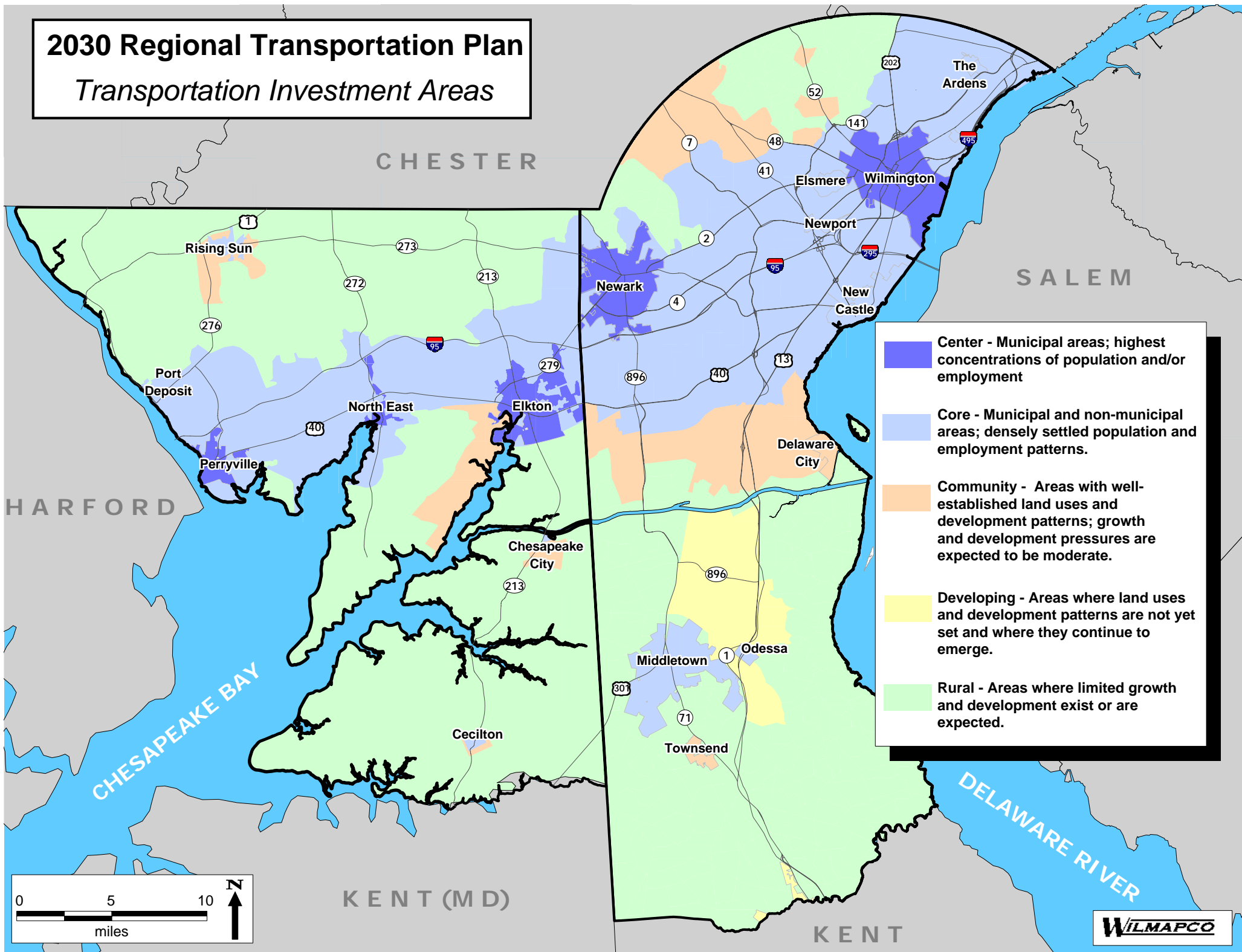


2030 Regional Transportation Plan

Transportation Investment Areas



- Center** - Municipal areas; highest concentrations of population and/or employment
- Core** - Municipal and non-municipal areas; densely settled population and employment patterns.
- Community** - Areas with well-established land uses and development patterns; growth and development pressures are expected to be moderate.
- Developing** - Areas where land uses and development patterns are not yet set and where they continue to emerge.
- Rural** - Areas where limited growth and development exist or are expected.

