

# Demographics Update

Small Area Projections:  
Geography Update and DRAFT  
Model Input Data

June 2022

## Current Traffic Analysis Zone (TAZ) Structure

### Current number of Zones

New Castle: 349

Kent: 158

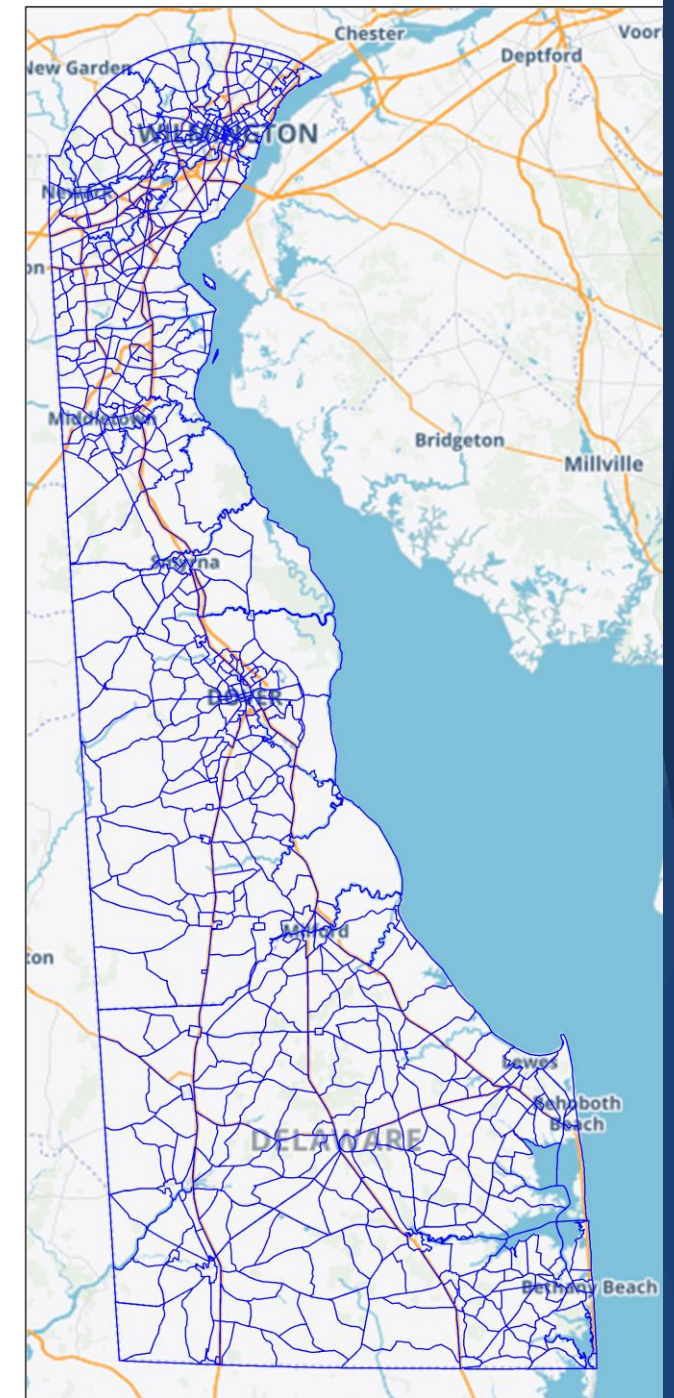
Sussex: 227

### Primary Uses:

- Forecast inputs for DelDOT Peninsula Model
- Subregional Planning Studies
- New Castle TIS
- Toll Revenue studies
- Evacuation planning
- Truck Planning

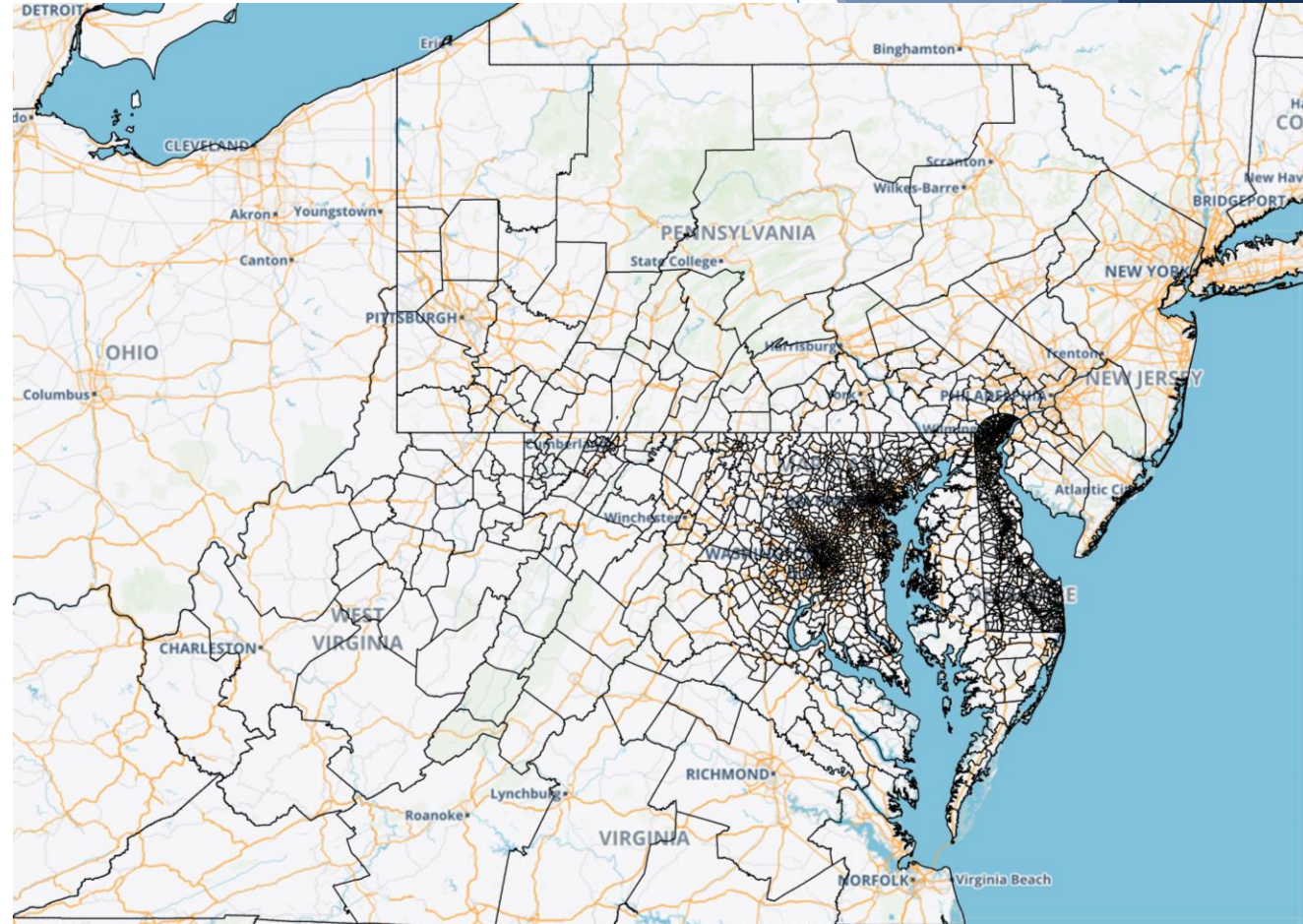
### Update Frequency:

- Data: Every 2 years
- Structure:
  - NCC 2014
  - Kent/Sussex??



## Peninsula Model – TAZ Update

- 3 “levels” now used
- Data needed for a wide area
- Best when they nest within each other
- Greater detail needed at lower levels

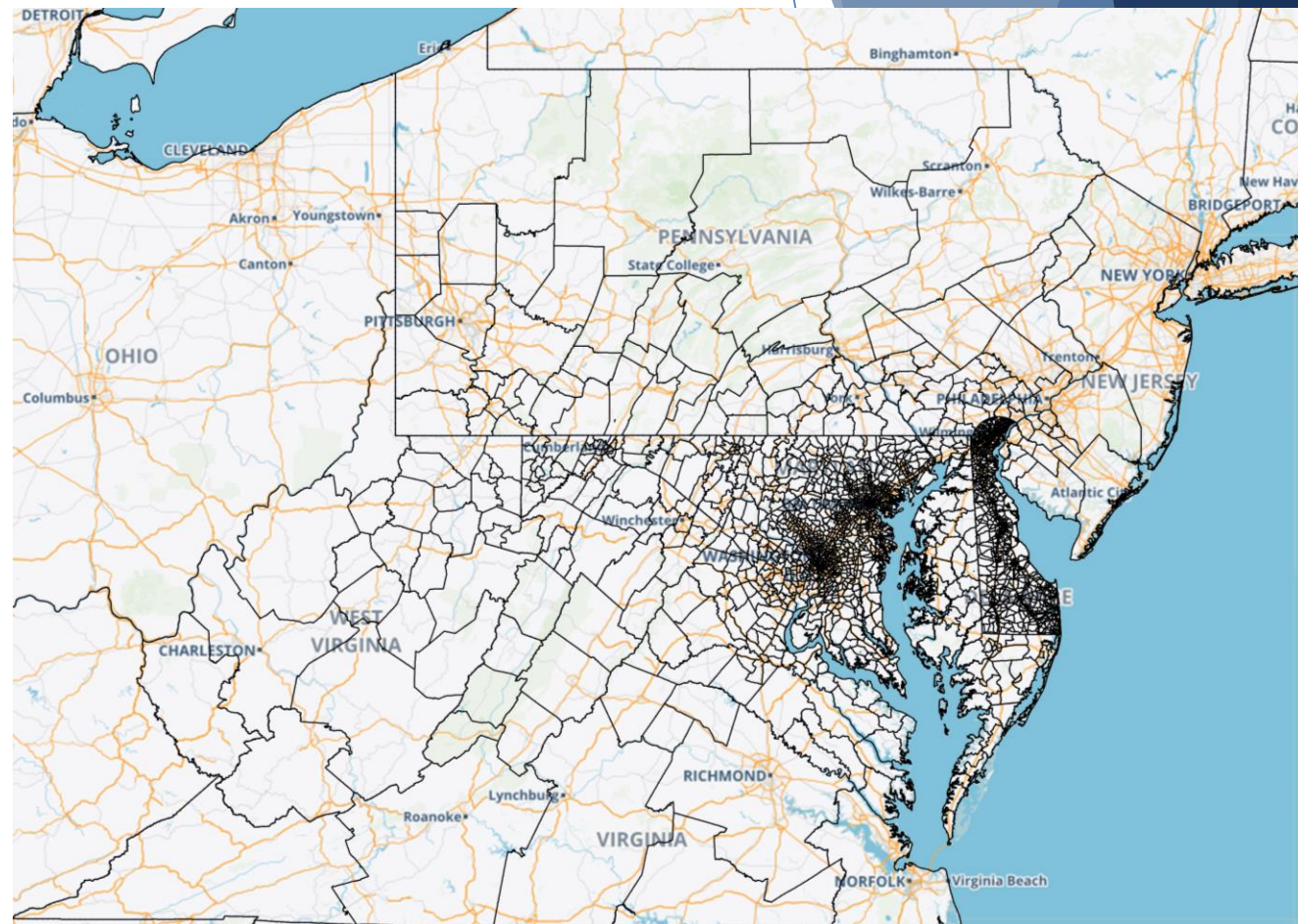




# Peninsula Model – TAZ Update

## Feeding the Beast: Attribute Data for each TAZ

TAZ_field	Definition	Source/Notes
WRK_HH_15	Avg. Workers per HH Year	
INC_15	median HH income	
VEH_HH_15	Avg. Vehicles per HH year 2015	
TOT_VEH_15	Total Vehicles Available year 2015	
TOT_WRK_15	Total Workers Available year 2015	
HH_2015	Occupied HHs 2015	
POP_2015	Total Population 2015	
EMP_2015	Total Employment 2015	
NATRES_15	Natural Resources & Mining	11, 21 NAICS Supersectors
CONS_15	Construction	22 NAICS Supersector
MANU_15	Manufacturing	31-33 NAICS Supersectors
WHL_RET_15	Wholesale & Retail Trade	42,44-45 NAICS Supersectors
TRN_UTL_15	Transportation & Utilities	22,48-49 NAICS Supersectors
INFO_15	Information	51 NAICS Supersector
FINANCE_15	Finance, Insurance and Real Estate	52-53 NAICS Supersectors
PRO_BUS_15	Professional and Business Services	54-56 NAICS Supersectors
ED_HEALT_15	Health and Education	61-62 NAICS Supersectors
LE_HOSP_15	Leisure & Hospitality	71-72 NAICS Supersectors
OT_SVCS_15	Other Services	81 NAICS Supersector
PUBADM_15	Public Administration	91-93 NAICS Supersectors
Over65pct_15	% of population over 65	
SOV_15	% of single occupant vehicles from JTW data	
Pool_15	% of carpoolers from JTW data	
Trans_15	% of public transit vehicles from JTW data	
WLK_BK_15	% of walkers/bikers from JTW data	
Home_15	% of home workers from JTW data	
Zero_HH_pct15	% of zero car households	

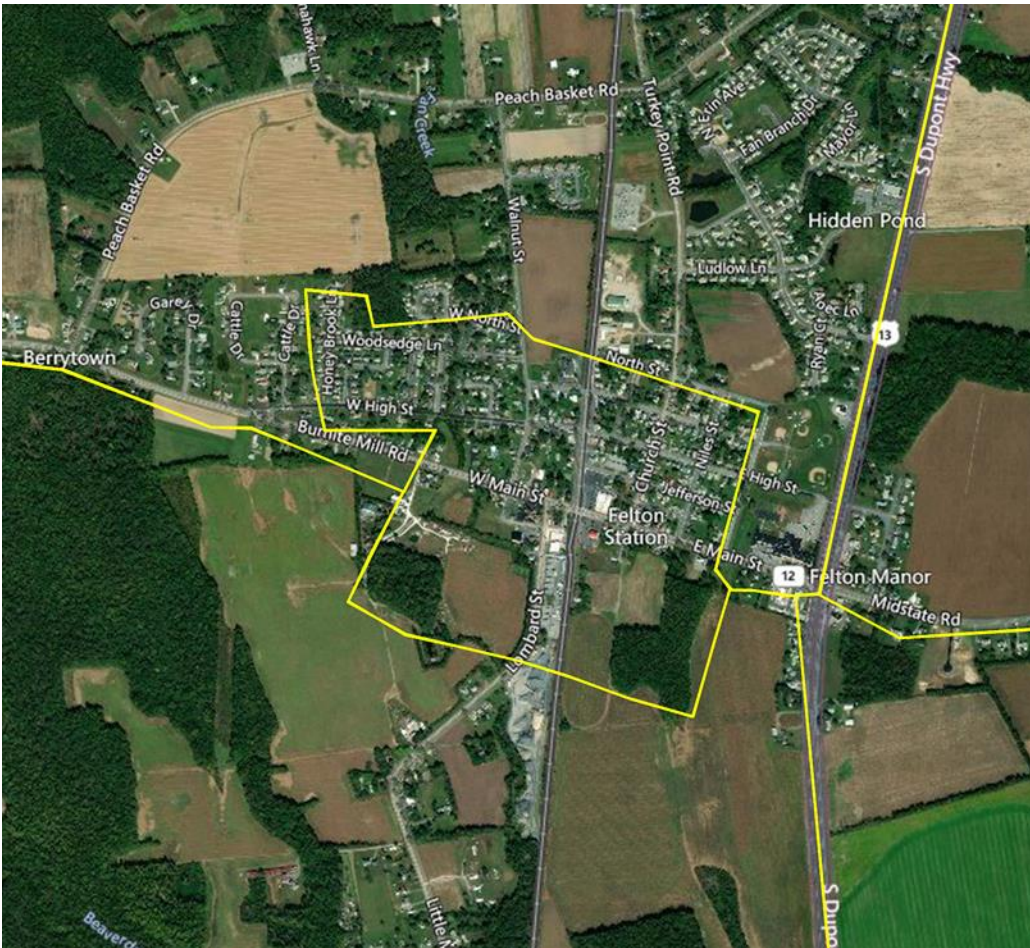




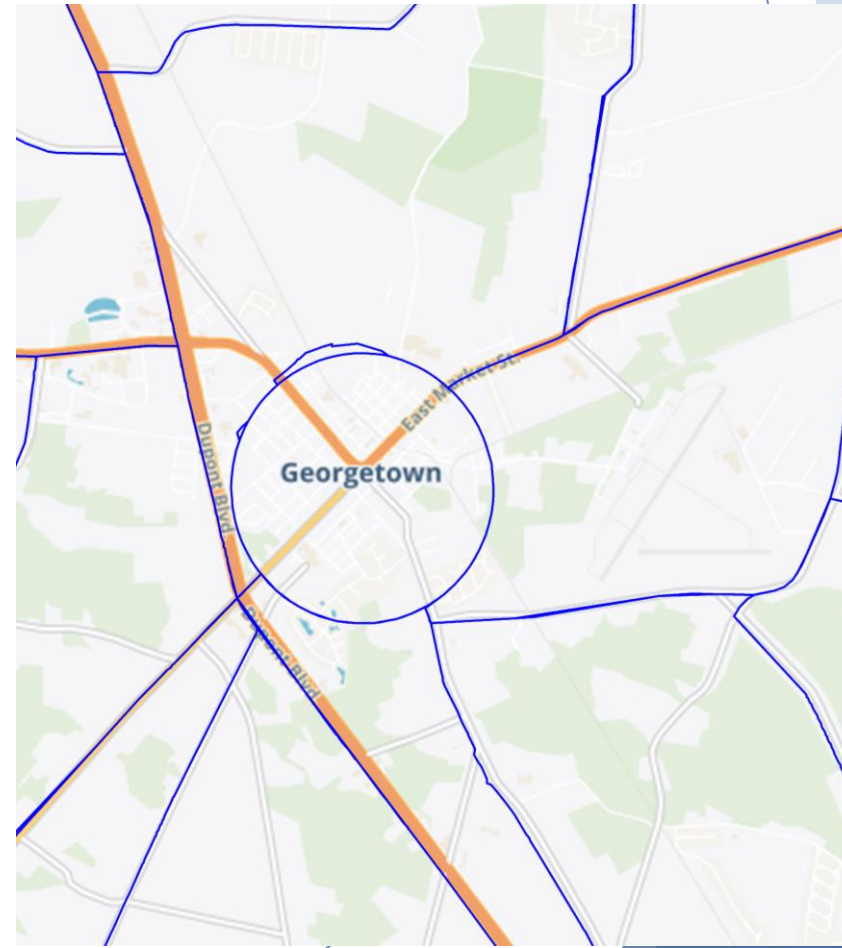
## Current Traffic Analysis Zone (TAZ) Structure

- Out of date linework
- Geographic “oddities”

Felton



Georgetown





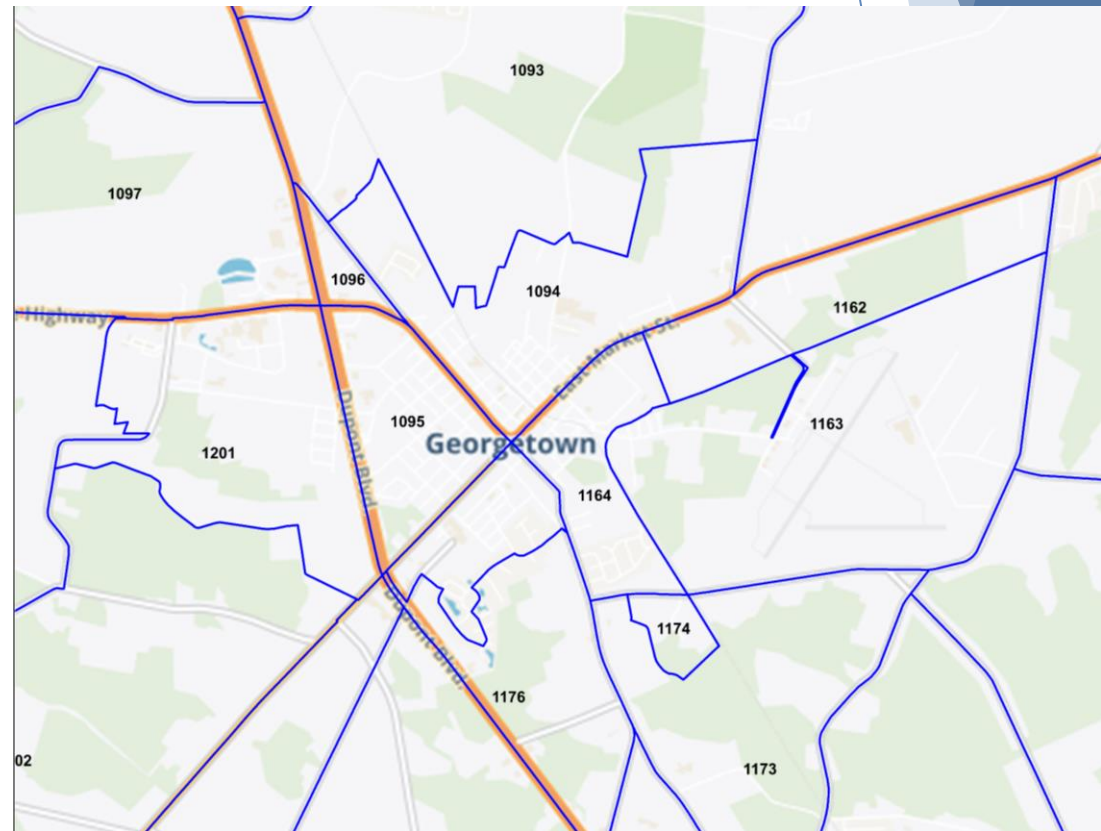
## Peninsula Model – TAZ Update

- No more crop circles!
- Use of 2020 Census Blocks as main source of geography
- More detailed for sub-regional study use
- Better separation with changing land use
- Works better in “nesting” with other geographies

Felton

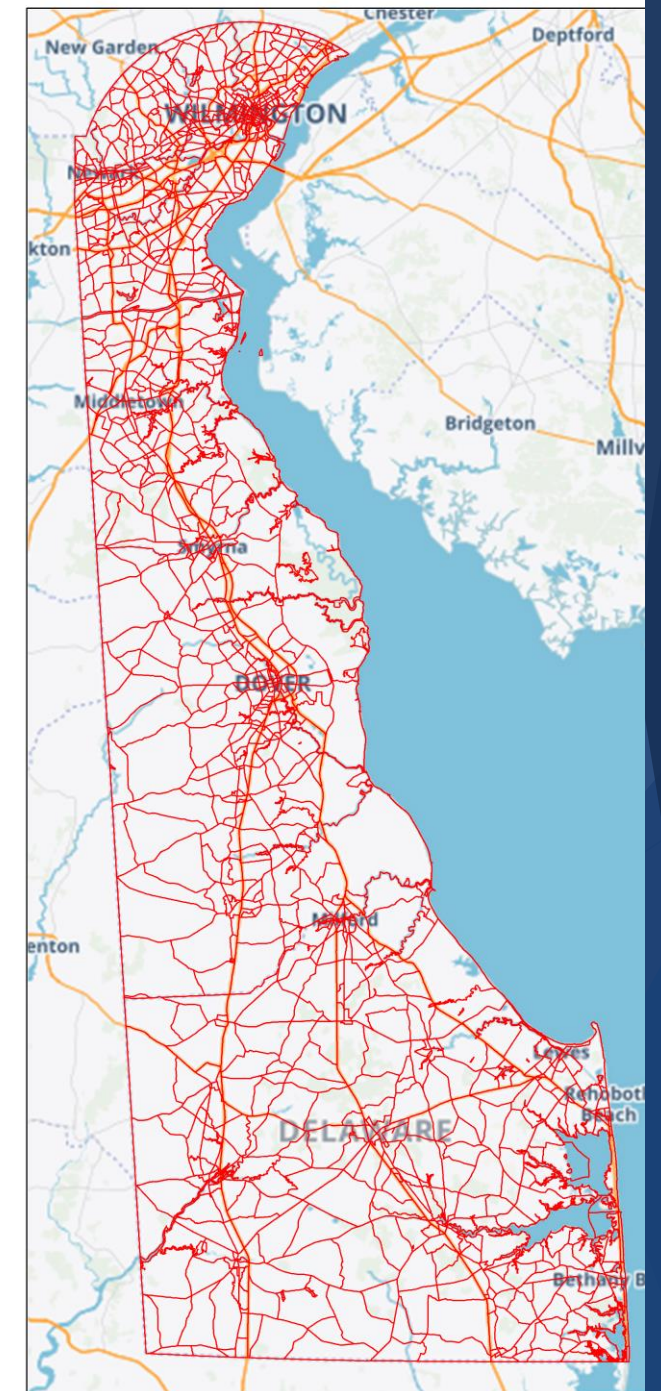


Georgetown



## Peninsula Model – TAZ Update

Number of Zones	Current	New
New Castle	349	648
Kent	158	268
Sussex	227	365
<b>TOTAL</b>	<b>734</b>	<b>1281</b>

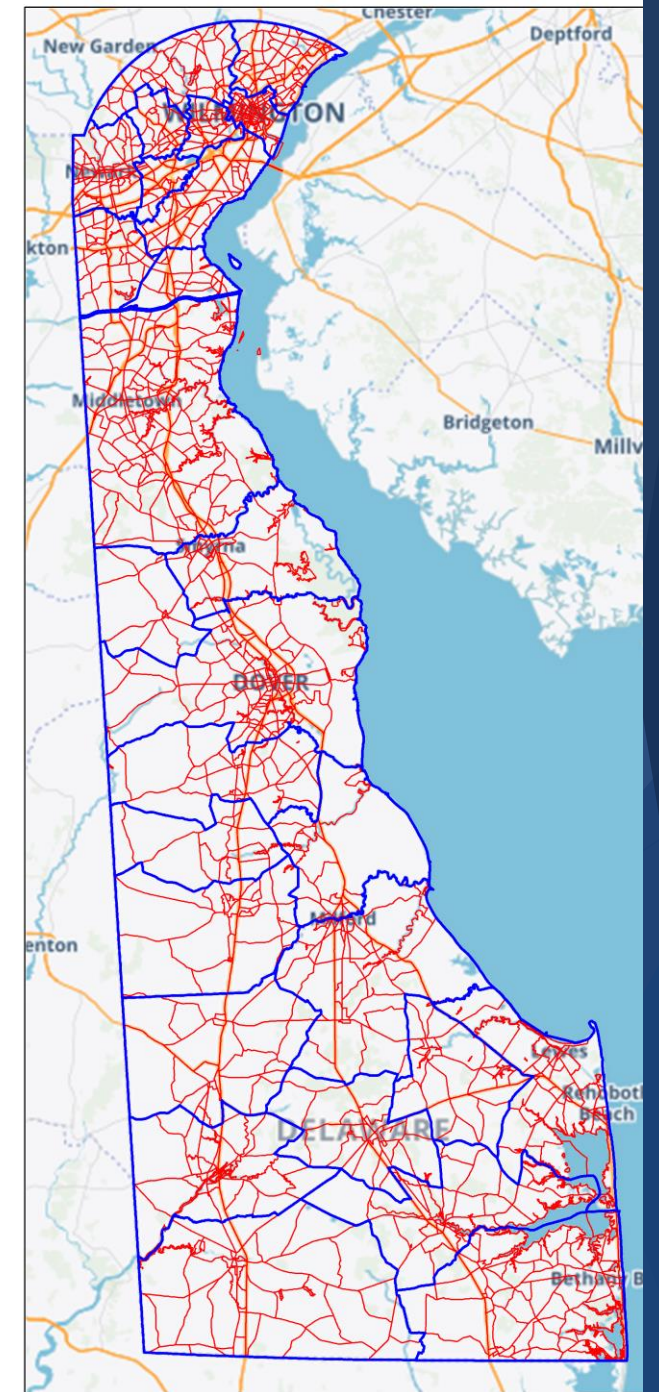




## Peninsula Model – TAZ Update

<b>Number of Zones</b>	<b>Current</b>	<b>New</b>
<b>New Castle</b>	<b>349</b>	<b>648</b>
<b>Kent</b>	<b>158</b>	<b>268</b>
<b>Sussex</b>	<b>227</b>	<b>365</b>
<b>TOTAL</b>	<b>734</b>	<b>1281</b>

- Maintained “nesting” within CCDs

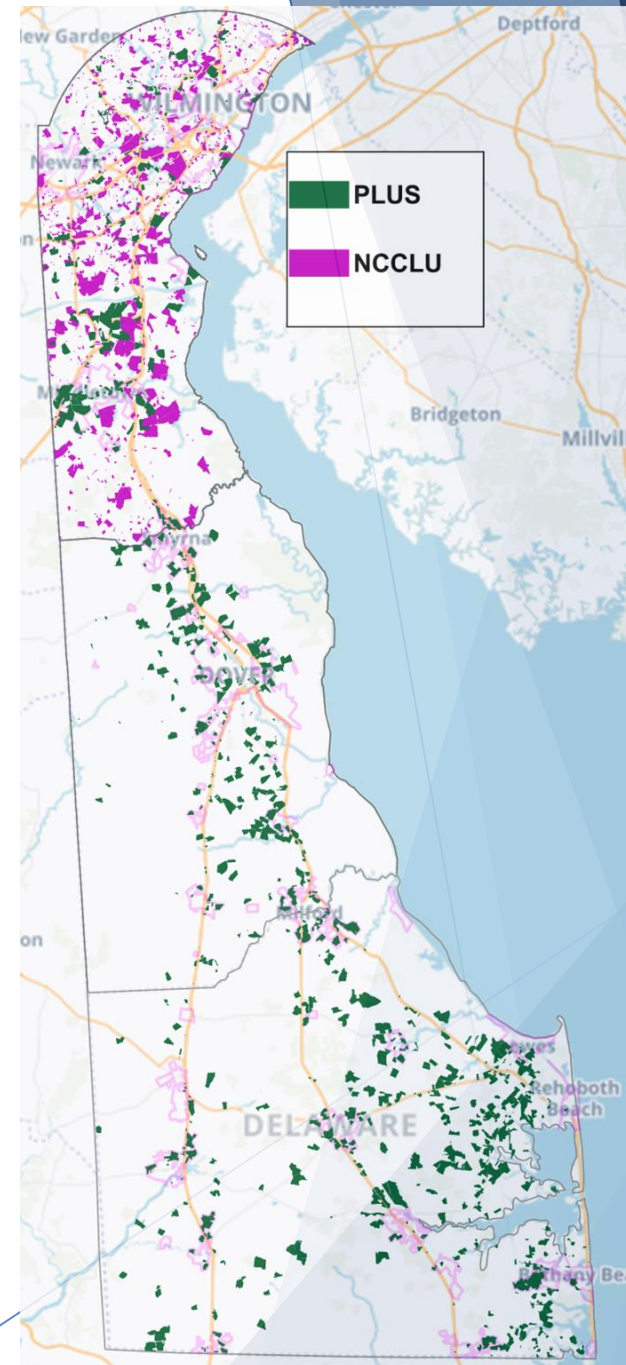




Current Model Inputs - DRAFT

## Current Model Inputs - DRAFT

- Assembled 1 week ago
- First version using new TAZ structure
- Scheduled to be used in AQ conformity model runs in August
- Take County totals from DPC
- Designed to feed the model!



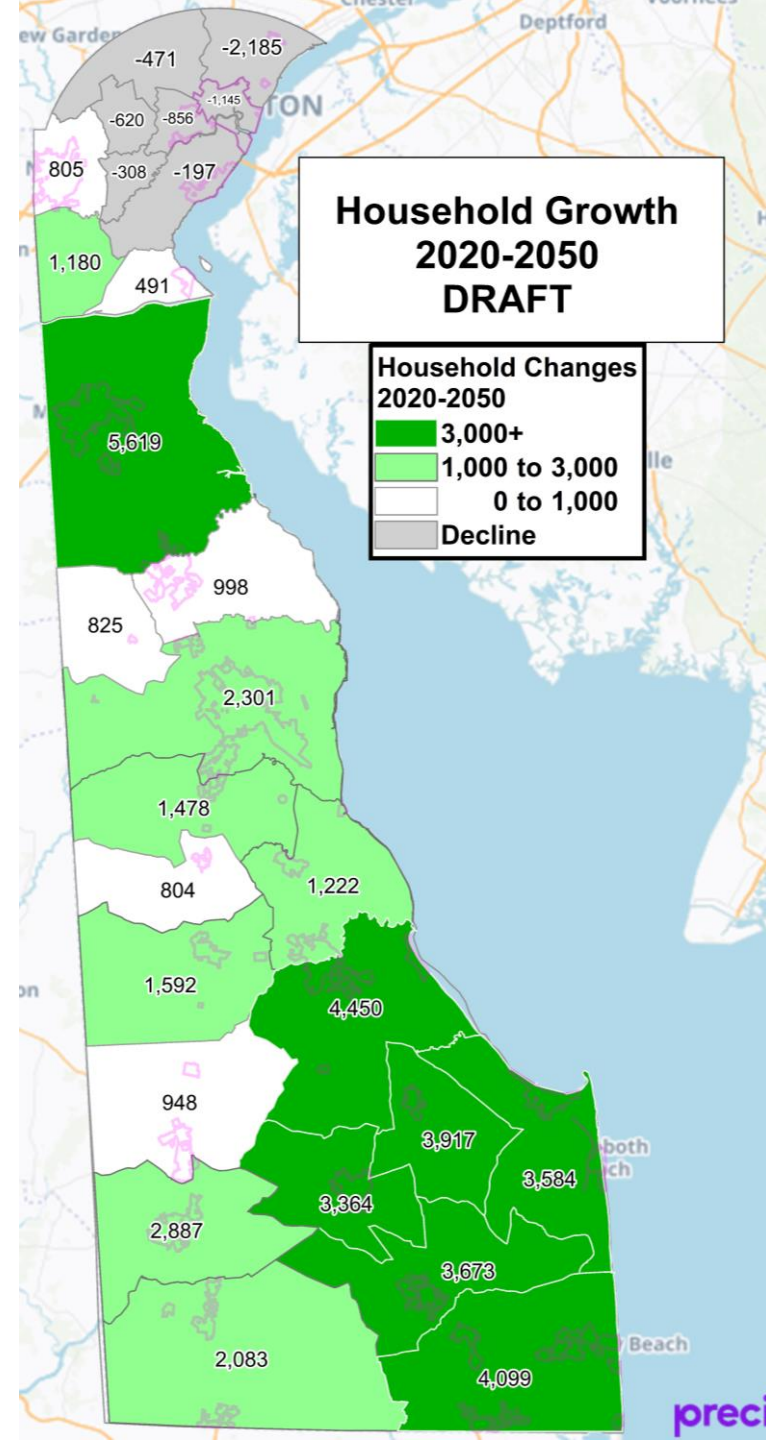


## Households

New Castle County	HH 2020	HH 2030	HH 2040	HH 2050	HH Change 2020-2050	% HH Change 2020-2050
Brandywine	33,865	33,370	32,704	31,680	-2,185	-6%
Glasgow	15,435	16,641	16,918	16,615	1,180	8%
Greater Newark	24,267	24,718	25,264	25,072	805	3%
Lower Christiana	14,886	14,572	14,455	14,030	-856	-6%
Middletown-Odessa	22,558	25,712	27,197	28,177	5,619	25%
New Castle	34,685	34,883	34,727	34,488	-197	-1%
Piedmont	11,655	11,582	11,503	11,184	-471	-4%
Pike Creek-Cent. Kirkwood	17,592	17,353	17,381	16,972	-620	-4%
Red Lion	3,420	3,609	3,805	3,911	491	14%
Upper Christiana	11,040	10,956	10,941	10,732	-308	-3%
Wilmington	30,164	29,508	29,579	29,019	-1,145	-4%
<b>Totals</b>	<b>219,567</b>	<b>222,903</b>	<b>224,474</b>	<b>221,881</b>	<b>2,314</b>	<b>1%</b>
<b>2021 DPC Controls</b>	<b>219,571</b>	<b>222,468</b>	<b>224,083</b>	<b>221,252</b>		

Kent County	HH 2020	HH 2030	HH 2040	HH 2050	HH Change 2020-2050	% HH Change 2020-2050
Central Kent	10,820	10,882	10,925	12,298	1,478	14%
Dover	31,315	32,457	33,449	33,616	2,301	7%
Felton	2,964	3,169	3,467	3,768	804	27%
Harrington	5,103	5,716	6,376	6,695	1,592	31%
Kenton	2,615	2,840	3,196	3,440	825	32%
Milford North	4,736	4,961	5,221	5,958	1,222	26%
Smyrna	10,737	10,865	10,652	11,735	998	9%
<b>Totals</b>	<b>68,290</b>	<b>70,891</b>	<b>73,285</b>	<b>77,509</b>	<b>9,219</b>	<b>13%</b>
<b>2021 DPC Controls</b>	<b>68,290</b>	<b>70,891</b>	<b>73,285</b>	<b>77,509</b>		

Sussex County	HH 2020	HH 2030	HH 2040	HH 2050	HH Change 2020-2050	% HH Change 2020-2050
Bridgeville - Greenwood	4,892	5,522	5,703	5,840	948	19%
Georgetown	4,928	6,297	8,145	8,292	3,364	68%
Laurel - Delmar	9,289	10,489	11,338	11,372	2,083	22%
Lewes	18,508	20,894	21,587	22,092	3,584	19%
Milford South	9,038	11,060	13,338	13,488	4,450	49%
Millsboro	14,340	16,250	16,924	18,013	3,673	26%
Milton	9,456	11,158	11,613	13,373	3,917	41%
Seaford	10,109	11,668	12,612	12,996	2,887	29%
Selbyville - Frankford	17,954	20,558	21,511	22,053	4,099	23%
<b>Totals</b>	<b>98,514</b>	<b>113,896</b>	<b>122,771</b>	<b>127,520</b>	<b>29,006</b>	<b>29%</b>
<b>2021 DPC Controls</b>	<b>98,514</b>	<b>114,044</b>	<b>124,136</b>	<b>127,520</b>		



## Current Model Inputs - DRAFT

Populations living in households:

- Model needs to know the people who can move on a daily basis!
- Estimating future values:

<b>2020 Institutional Population</b>	<b>Prison</b>	<b>Nursing</b>	<b>Total</b>
NCC	3,462	2,747	6,209
Kent	153	764	917
Sussex	1,301	1,074	2,375
<b>Total</b>	<b>4,916</b>	<b>4,585</b>	<b>9,501</b>

<b>85+ Population</b>	<b>2020</b>	<b>2050</b>	<b>2020-2050 Change</b>	<b>% Growth</b>
NCC	11,083	28,723	17,640	159%
Kent	3,438	7,152	3,714	108%
Sussex	7,961	23,709	15,748	198%
<b>Total</b>	<b>22,482</b>	<b>59,584</b>	<b>37,102</b>	<b>165%</b>



## Current Model Inputs - DRAFT

Populations living in households:

- Model needs to know the people who can move on a daily basis!
- Estimating future values:

<b>2020 Institutional Population</b>	<b>Prison</b>	<b>Nursing</b>	<b>Total</b>
NCC	3,462	2,747	6,209
Kent	153	764	917
Sussex	1,301	1,074	2,375
<b>Total</b>	<b>4,916</b>	<b>4,585</b>	<b>9,501</b>

<b>85+ Population</b>	<b>2020</b>	<b>2050</b>	<b>2020-2050 Change</b>	<b>% Growth</b>
NCC	11,083	28,723	17,640	159%
Kent	3,438	7,152	3,714	108%
Sussex	7,961	23,709	15,748	198%
<b>Total</b>	<b>22,482</b>	<b>59,584</b>	<b>37,102</b>	<b>165%</b>

<b>DPC Population (all people)</b>	<b>2020</b>	<b>2050</b>
NCC	571,058	603,757
Kent	182,481	204,411
Sussex	238,496	307,544

<b>Est. Household Population</b>	<b>2020</b>	<b>2050</b>
NCC	564,371	592,670
Kent	181,497	202,293
Sussex	235,854	301,385

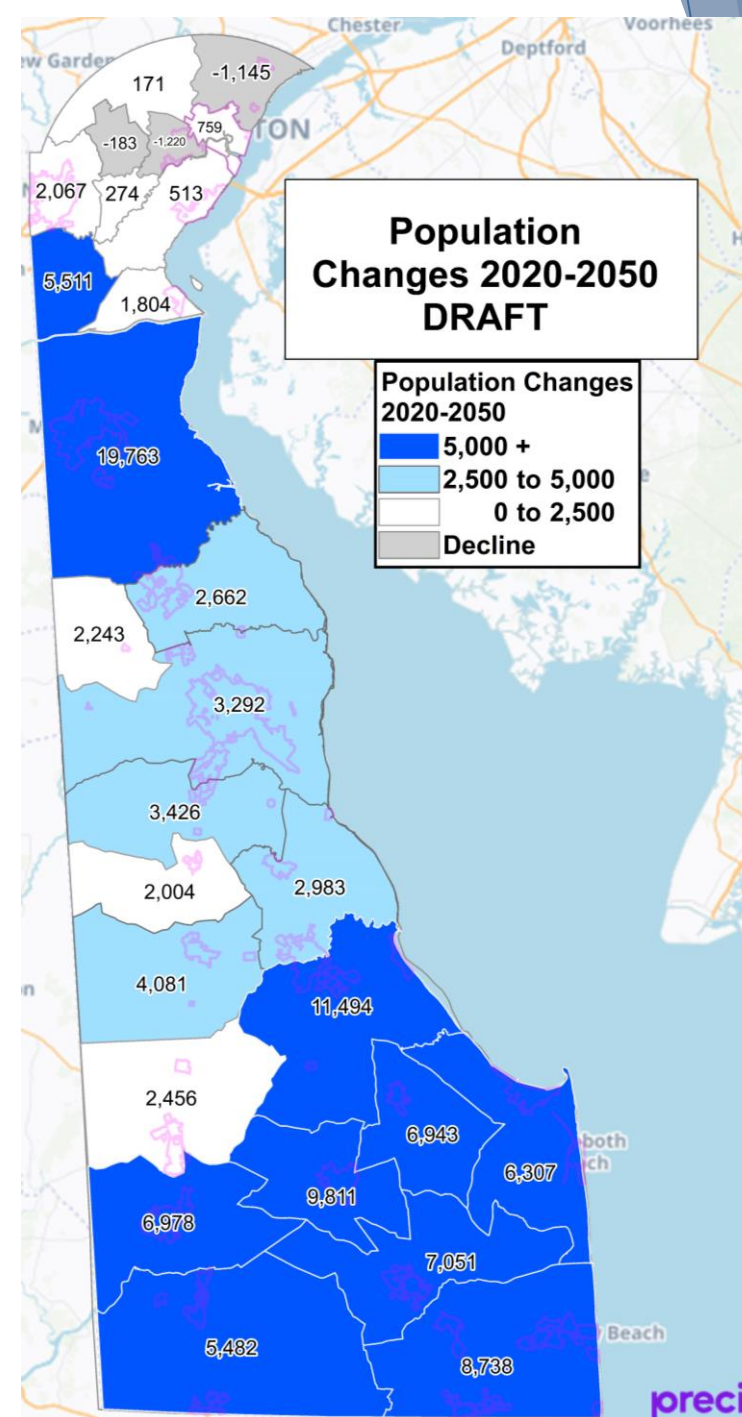
<b>Est. Institutional Population (prison + Nursing Home)</b>	<b>2020</b>	<b>2050</b>
NCC	6,687	11,087
Kent	984	2,118
Sussex	2,642	6,159
<b>Statewide Total</b>	<b>10,313</b>	<b>19,363</b>

## Population (Minus Institutional Group Quarters)

New Castle County	POP 2020	POP 2030	POP 2040	POP 2050	POP Change 2020-2050	% POP Change 2020-2050
Brandywine	79,996	80,011	79,811	78,851	-1,145	-1%
Glasgow	42,420	46,213	47,514	47,931	5,511	13%
Greater Newark	67,431	67,814	69,008	69,498	2,067	3%
Lower Christiana	37,660	36,642	36,832	36,440	-1,220	-3%
Middletown-Odessa	66,938	76,637	82,787	86,701	19,763	30%
New Castle	89,900	90,447	91,102	90,413	513	1%
Piedmont	30,131	30,267	30,565	30,302	171	1%
Pike Creek-Cent. Kirkwood	42,584	42,204	42,778	42,401	-183	0%
Red Lion	10,038	10,674	11,428	11,842	1,804	18%
Upper Christiana	28,396	28,497	28,827	28,670	274	1%
Wilmington	68,877	69,598	69,748	69,636	759	1%
<b>Totals</b>	<b>564,371</b>	<b>579,005</b>	<b>590,400</b>	<b>592,685</b>	<b>28,314</b>	<b>5%</b>
<b>DPC Controls (Tot. Pop.)</b>	<b>571,058</b>	<b>585,990</b>	<b>599,650</b>	<b>603,757</b>		
<b>Institutional GQ Totals</b>	<b>6,687</b>	<b>6,985</b>	<b>9,250</b>	<b>11,072</b>		

Kent County	POP 2020	POP 2030	POP 2040	POP 2050	POP Change 2020-2050	% POP Change 2020-2050
Central Kent	30,072	29,962	29,858	33,498	3,426	11%
Dover	81,983	81,135	83,052	85,275	3,292	4%
Felton	7,689	8,095	8,792	9,693	2,004	26%
Harrington	13,232	14,590	16,159	17,313	4,081	31%
Kenton	7,425	7,923	8,727	9,668	2,243	30%
Milford North	11,813	12,254	12,788	14,796	2,983	25%
Smyrna	29,392	29,425	29,623	32,054	2,662	9%
<b>Totals</b>	<b>181,606</b>	<b>183,384</b>	<b>188,998</b>	<b>202,297</b>	<b>20,691</b>	<b>11%</b>
<b>2021 DPC Controls</b>	<b>182,481</b>	<b>184,613</b>	<b>190,631</b>	<b>204,411</b>		
<b>Institutional GQ Totals</b>	<b>875</b>	<b>1,229</b>	<b>1,633</b>	<b>2,114</b>		

Sussex County	POP 2020	POP 2030	POP 2040	POP 2050	POP Change 2020-2050	% POP Change 2020-2050
Bridgeville - Greenwood	13,141	14,573	15,006	15,597	2,456	19%
Georgetown	14,557	18,268	23,566	24,368	9,811	67%
Laurel - Delmar	25,194	27,936	30,121	30,676	5,482	22%
Lewes	37,916	42,026	43,291	44,223	6,307	17%
Milford South	23,716	28,495	34,281	35,210	11,494	48%
Millsboro	33,855	37,673	39,136	40,906	7,051	21%
Milton	21,733	25,184	26,144	28,676	6,943	32%
Seaford	26,637	30,191	32,551	33,615	6,978	26%
Selbyville - Frankford	39,373	44,271	46,205	48,111	8,738	22%
<b>Totals</b>	<b>236,122</b>	<b>268,616</b>	<b>290,301</b>	<b>301,382</b>	<b>65,260</b>	<b>28%</b>
<b>2021 DPC Controls</b>	<b>238,496</b>	<b>272,266</b>	<b>295,311</b>	<b>307,544</b>		
<b>Institutional GQ Totals</b>	<b>2,374</b>	<b>3,650</b>	<b>5,010</b>	<b>6,162</b>		



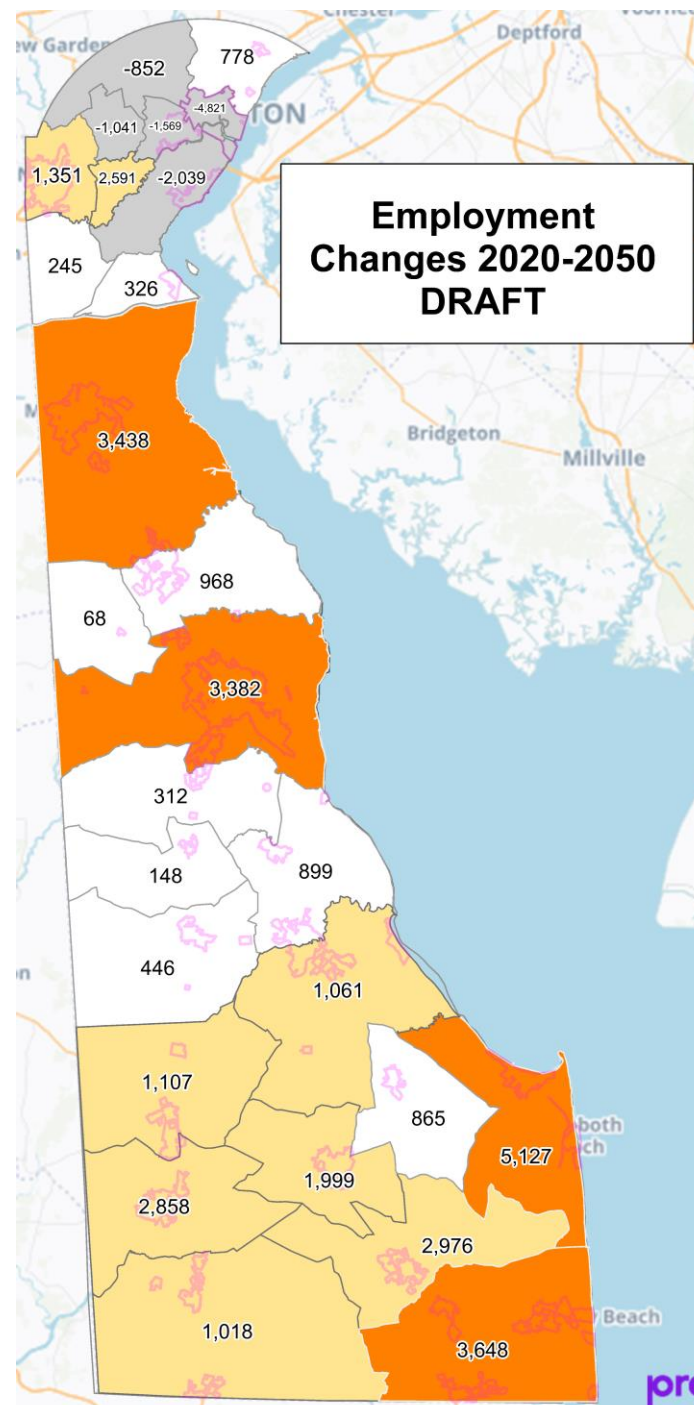


## Employment Growth 2020-2050

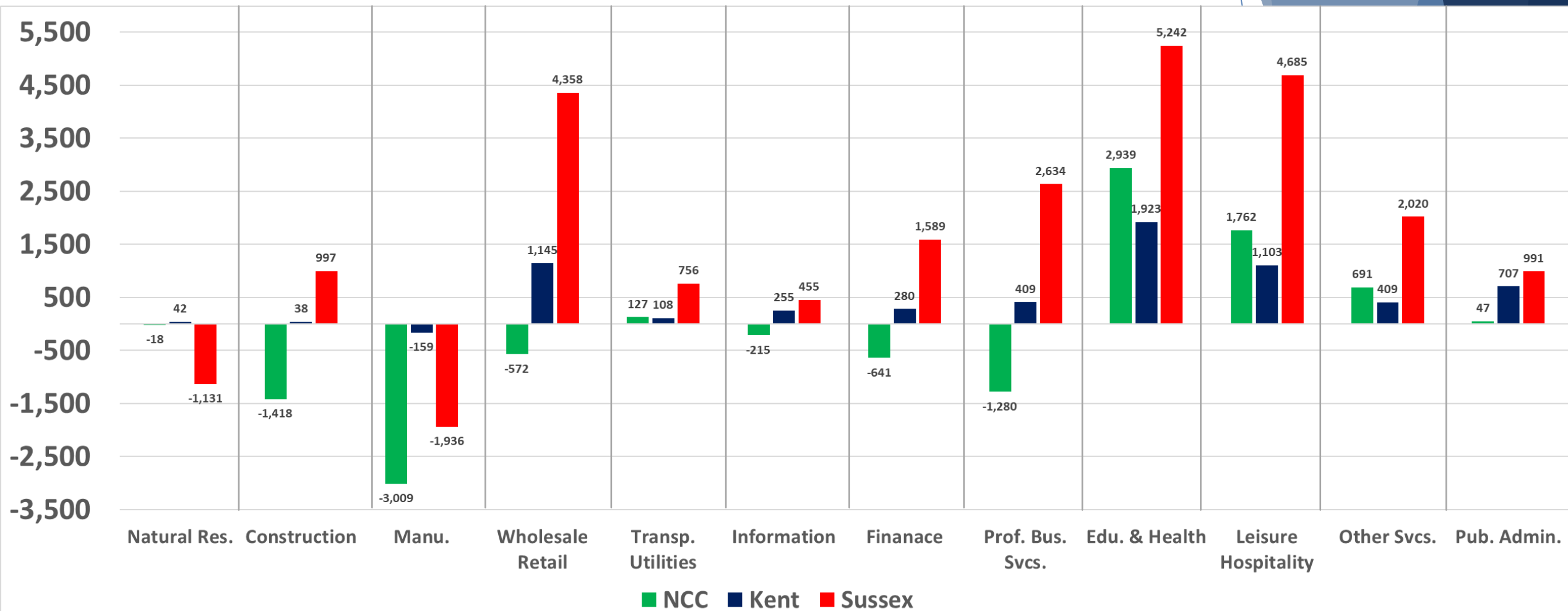
New Castle County	EMP 2020	EMP 2030	EMP 2040	EMP 2050	EMP Change 2020-2050	% EMP Change 2020-2050
Brandywine	39,173	40,441	40,600	39,951	778	2%
Glasgow	12,677	12,686	12,804	12,922	245	2%
Greater Newark	36,245	36,567	37,451	37,596	1,351	4%
Lower Christiana	23,223	22,673	22,425	21,654	-1,569	-7%
Middletown-Odessa	16,045	17,763	18,901	19,483	3,438	21%
New Castle	39,874	39,505	38,668	37,835	-2,039	-5%
Piedmont	11,947	11,725	11,412	11,095	-852	-7%
Pike Creek-Cent. Kirkwood	13,874	13,606	13,225	12,833	-1,041	-8%
Red Lion	3,174	3,255	3,453	3,500	326	10%
Upper Christiana	35,036	35,661	37,237	37,627	2,591	7%
Wilmington	62,283	60,310	59,354	57,462	-4,821	-8%
<b>Totals</b>	<b>293,551</b>	<b>294,191</b>	<b>295,529</b>	<b>291,958</b>	<b>-1,593</b>	<b>-1%</b>
<b>2021 DPC Controls</b>	<b>295,182</b>	<b>294,191</b>	<b>295,528</b>	<b>291,683</b>		

Kent County	EMP 2020	EMP 2030	EMP 2040	EMP 2050	EMP Change 2020-2050	% EMP Change 2020-2050
Central Kent	2,325	2,357	2,454	2,637	311	13%
Dover	48,911	49,322	50,794	52,293	3,382	7%
Felton	1,012	1,029	1,076	1,160	147	15%
Harrington	3,354	3,400	3,537	3,800	446	13%
Kenton	495	502	524	563	68	14%
Milford North	6,861	6,951	7,226	7,760	899	13%
Smyrna	8,118	8,204	8,483	9,086	968	12%
<b>Totals</b>	<b>71,077</b>	<b>71,765</b>	<b>74,094</b>	<b>77,298</b>	<b>6,221</b>	<b>9%</b>
<b>2021 DPC Controls</b>	<b>71,077</b>	<b>71,765</b>	<b>74,094</b>	<b>77,298</b>		

Sussex County	EMP 2020	EMP 2030	EMP 2040	EMP 2050	EMP Change 2020-2050	% EMP Change 2020-2050
Bridgeville - Greenwood	3,690	4,104	4,511	4,797	1,108	30%
Georgetown	10,075	10,976	11,584	12,074	1,998	20%
Laurel - Delmar	5,177	5,638	5,946	6,195	1,018	20%
Lewes	23,420	25,622	27,272	28,547	5,127	22%
Milford South	5,459	5,942	6,261	6,520	1,062	19%
Millsboro	12,354	13,576	14,580	15,330	2,975	24%
Milton	4,808	5,218	5,465	5,673	864	18%
Seaford	12,019	13,200	14,158	14,877	2,858	24%
Selbyville - Frankford	13,007	14,408	15,718	16,655	3,648	28%
<b>Totals</b>	<b>90,010</b>	<b>98,684</b>	<b>105,494</b>	<b>110,668</b>	<b>20,658</b>	<b>23%</b>
<b>2021 DPC Controls</b>	<b>90,010</b>	<b>98,684</b>	<b>105,494</b>	<b>110,668</b>		



# Countywide Employment Changes by Type: 2020-2050





New Castle County	NATRES_20	CONS_20	MANU_20	WHL_RET_2 0	TRN_UTL_20	INFO_20	FINANCE_20	PRO_BUS_20	ED_HEALTH_2 0	LE_HOSP_20	OT_SVCS_20	PUBADM_20	TOTEMP_20
Brandywine	122	1,592	3,389	6,739	472	1,238	4,597	3,667	10,503	4,040	2,678	136	39,173
Glasgow	2	1,013	1,063	1,959	449	152	889	1,096	3,172	1,307	1,482	91	12,677
Greater Newark	13	2,239	2,143	5,382	578	2,000	2,421	4,428	7,770	6,198	2,300	773	36,245
Lower Christiana	21	3,084	4,341	3,114	445	387	1,422	3,119	3,117	1,693	1,611	870	23,223
Middletown-Odessa	35	1,321	485	3,649	495	190	715	1,061	4,315	1,806	1,052	920	16,045
New Castle	68	3,261	1,935	10,275	1,631	1,079	1,689	4,444	5,925	3,626	2,639	3,302	39,874
Piedmont	9	374	209	1,176	103	297	1,735	1,831	3,333	2,050	812	16	11,947
Pike Creek	0	560	283	2,111	99	118	1,092	1,143	5,800	1,676	929	61	13,874
Red Lion	0	242	1,035	356	46	51	65	169	721	179	120	190	3,174
Upper Christiana	10	734	198	5,862	1,433	277	2,717	1,667	14,663	3,782	1,287	2,405	35,036
Wilmington	18	1,321	1,539	4,544	1,179	1,442	6,297	18,571	12,574	4,071	5,312	5,416	62,283
<b>County Totals</b>	<b>300</b>	<b>15,741</b>	<b>16,621</b>	<b>45,168</b>	<b>6,931</b>	<b>7,230</b>	<b>23,639</b>	<b>41,197</b>	<b>71,894</b>	<b>30,429</b>	<b>20,221</b>	<b>14,181</b>	<b>293,551</b>
<b>% of Job Type</b>	<b>0%</b>	<b>5%</b>	<b>6%</b>	<b>15%</b>	<b>2%</b>	<b>2%</b>	<b>8%</b>	<b>14%</b>	<b>24%</b>	<b>10%</b>	<b>7%</b>	<b>5%</b>	<b>293,551</b>

Kent County	NATRES_20	CONS_20	MANU_20	WHL_RET_2 0	TRN_UTL_20	INFO_20	FINANCE_20	PRO_BUS_20	ED_HEALTH_2 0	LE_HOSP_20	OT_SVCS_20	PUBADM_20	TOTEMP_20
Central Kent	17	289	50	190	47	19	103	160	1,151	137	148	14	2,325
Dover	294	1,649	1,552	6,426	824	1,148	1,901	2,614	9,678	5,774	2,142	14,908	48,910
Felton	27	172	15	238	40	11	48	18	277	50	100	16	1,012
Harrington	10	211	55	531	194	15	98	167	506	1,310	156	100	3,352
Kenton	52	66	28	36	16	4	14	139	45	18	58	20	495
Milford North	134	273	717	1,693	173	196	341	545	1,157	965	395	273	6,861
Smyrna	32	405	510	2,244	174	64	298	283	2,618	591	590	309	8,118
<b>County Totals</b>	<b>566</b>	<b>3,063</b>	<b>2,926</b>	<b>11,359</b>	<b>1,468</b>	<b>1,457</b>	<b>2,803</b>	<b>3,926</b>	<b>15,433</b>	<b>8,844</b>	<b>3,588</b>	<b>15,639</b>	<b>71,073</b>
<b>% of Job Type</b>	<b>1%</b>	<b>4%</b>	<b>4%</b>	<b>16%</b>	<b>2%</b>	<b>2%</b>	<b>4%</b>	<b>6%</b>	<b>22%</b>	<b>12%</b>	<b>5%</b>	<b>22%</b>	<b>71,077</b>

Sussex County	NATRES_20	CONS_20	MANU_20	WHL_RET_2 0	TRN_UTL_20	INFO_20	FINANCE_20	PRO_BUS_20	ED_HEALTH_2 0	LE_HOSP_20	OT_SVCS_20	PUBADM_20	TOTEMP_20
Bridgeville - Greenwood	38	521	708	692	442	17	95	157	592	209	144	74	3,690
Georgetown	23	654	1,342	1,088	88	64	410	654	1,692	631	647	2,781	10,075
Laurel - Delmar	71	396	541	1,198	180	67	330	466	753	635	365	176	5,177
Lewes	18	857	361	5,061	229	261	2,007	1,234	4,966	6,776	1,129	521	23,420
Milford South	49	608	984	673	234	23	150	262	1,521	320	415	217	5,457
Millsboro	2,174	594	3,463	1,491	111	39	451	434	1,257	1,233	393	714	12,354
Milton	647	697	305	569	142	121	249	509	682	458	312	115	4,807
Seaford	129	539	1,026	2,320	478	96	592	554	3,952	1,202	872	256	12,018
Selbyville - Frankford	64	1,344	1,780	2,562	150	70	1,026	784	1,254	2,912	699	362	13,007
<b>County Totals</b>	<b>3,213</b>	<b>6,210</b>	<b>10,509</b>	<b>15,655</b>	<b>2,056</b>	<b>758</b>	<b>5,311</b>	<b>5,054</b>	<b>16,669</b>	<b>14,377</b>	<b>4,977</b>	<b>5,216</b>	<b>90,005</b>
<b>% of Job Type</b>	<b>4%</b>	<b>7%</b>	<b>12%</b>	<b>17%</b>	<b>2%</b>	<b>1%</b>	<b>6%</b>	<b>6%</b>	<b>19%</b>	<b>16%</b>	<b>6%</b>	<b>6%</b>	<b>90,010</b>

	NATRES_20	CONS_20	MANU_20	WHL_RET_2 0	TRN_UTL_20	INFO_20	FINANCE_20	PRO_BUS_20	ED_HEALTH_2 0	LE_HOSP_20	OT_SVCS_20	PUBADM_20	TOTEMP_20
<b>DE Statewide Total</b>	<b>4,078</b>	<b>25,015</b>	<b>30,056</b>	<b>72,181</b>	<b>10,455</b>	<b>9,445</b>	<b>31,753</b>	<b>50,177</b>	<b>103,996</b>	<b>53,650</b>	<b>28,787</b>	<b>35,036</b>	<b>454,629</b>
<b>% of Job Type</b>	<b>1%</b>	<b>6%</b>	<b>7%</b>	<b>16%</b>	<b>2%</b>	<b>2%</b>	<b>7%</b>	<b>11%</b>	<b>23%</b>	<b>12%</b>	<b>6%</b>	<b>8%</b>	<b>454,638</b>

New Castle County	NATRES_50	CONS_50	MANU_50	WHL_RET_50	TRN_UTL_50	INFO_50	FINANCE_50	PRO_BUS_50	ED_HEALTH_50	LE_HOSP_50	OT_SVCS_50	PUBADM_50	TOTEMP_50
Brandywine	113	1,518	2,869	6,971	623	1,173	4,539	3,903	10,986	4,299	2,827	129	39,951
Glasgow	2	905	775	1,877	460	150	870	1,110	3,410	1,504	1,769	88	12,922
Greater Newark	13	1,905	1,938	5,647	664	2,085	2,517	4,614	8,002	6,683	2,714	813	37,596
Lower Christiana	20	2,858	2,844	2,743	445	363	1,321	3,063	3,628	1,715	1,796	858	21,654
Middletown-Odessa	43	1,336	540	4,458	520	216	851	1,359	5,585	2,317	1,262	995	19,483
New Castle	55	2,689	1,585	9,158	1,546	1,009	1,603	4,412	6,265	3,668	2,580	3,266	37,835
Piedmont	8	336	191	992	92	265	1,547	1,663	3,284	1,959	746	13	11,095
Pike Creek-Central Kirkwood	0	489	281	1,725	91	108	1,000	1,052	5,557	1,621	856	57	12,833
Red Lion	0	245	968	353	52	52	77	284	808	247	149	271	3,506
Upper Christiana	10	710	210	6,201	1,452	297	2,862	1,771	15,891	4,331	1,354	2,539	37,627
Wilmington	16	1,332	1,411	4,472	1,112	1,297	5,811	16,685	11,417	3,848	4,861	5,200	57,462
<b>County Totals</b>	<b>282</b>	<b>14,324</b>	<b>13,611</b>	<b>44,596</b>	<b>7,058</b>	<b>7,015</b>	<b>22,998</b>	<b>39,916</b>	<b>74,833</b>	<b>32,191</b>	<b>20,912</b>	<b>14,228</b>	<b>291,964</b>
<b>% of Job Type</b>	<b>0%</b>	<b>5%</b>	<b>5%</b>	<b>15%</b>	<b>2%</b>	<b>2%</b>	<b>8%</b>	<b>14%</b>	<b>26%</b>	<b>11%</b>	<b>7%</b>	<b>5%</b>	<b>291,958</b>

Kent County	NATRES_50	CONS_50	MANU_50	WHL_RET_50	TRN_UTL_50	INFO_50	FINANCE_50	PRO_BUS_50	ED_HEALTH_50	LE_HOSP_50	OT_SVCS_50	PUBADM_50	TOTEMP_50
Central Kent	18	306	50	218	48	20	113	182	1,348	156	163	14	2,636
Dover	314	1,652	1,422	6,885	881	1,374	2,069	2,874	10,726	6,274	2,332	15,518	52,322
Felton	28	171	17	290	43	12	55	19	334	68	105	18	1,160
Harrington	11	202	65	625	209	16	109	195	556	1,536	174	104	3,800
Kenton	59	63	32	41	18	4	15	161	58	26	65	23	564
Milford North	146	299	711	1,950	182	214	392	594	1,346	1,179	448	303	7,763
Smyrna	34	408	470	2,494	196	71	330	312	2,989	708	709	366	9,086
<b>County Totals</b>	<b>608</b>	<b>3,101</b>	<b>2,767</b>	<b>12,504</b>	<b>1,576</b>	<b>1,712</b>	<b>3,083</b>	<b>4,336</b>	<b>17,356</b>	<b>9,947</b>	<b>3,996</b>	<b>16,346</b>	<b>77,331</b>
<b>% of Job Type</b>	<b>1%</b>	<b>4%</b>	<b>4%</b>	<b>16%</b>	<b>2%</b>	<b>2%</b>	<b>4%</b>	<b>6%</b>	<b>22%</b>	<b>13%</b>	<b>5%</b>	<b>21%</b>	<b>77,298</b>

Sussex County	NATRES_50	CONS_50	MANU_50	WHL_RET_50	TRN_UTL_50	INFO_50	FINANCE_50	PRO_BUS_50	ED_HEALTH_50	LE_HOSP_50	OT_SVCS_50	PUBADM_50	TOTEMP_50
Bridgeville - Greenwood	48	615	813	874	560	26	133	230	844	349	211	95	4,797
Georgetown	33	764	1,381	1,344	104	77	478	760	2,241	861	807	3,222	12,073
Laurel - Delmar	83	450	432	1,465	216	74	447	604	943	838	445	199	6,196
Lewes	21	999	351	6,261	290	350	2,481	1,645	5,979	8,161	1,384	624	28,546
Milford South	62	740	975	806	269	29	182	310	1,884	513	511	240	6,520
Millsboro	993	726	2,873	2,243	286	47	571	1,438	2,138	2,173	916	927	15,330
Milton	561	710	279	677	159	138	290	657	1,004	626	443	129	5,673
Seaford	189	551	860	2,905	622	161	786	767	4,880	1,648	1,204	304	14,877
Selbyville - Frankford	91	1,653	607	3,439	306	311	1,532	1,278	1,998	3,894	1,078	467	16,655
<b>County Totals</b>	<b>2,082</b>	<b>7,208</b>	<b>8,572</b>	<b>20,013</b>	<b>2,812</b>	<b>1,213</b>	<b>6,899</b>	<b>7,689</b>	<b>21,911</b>	<b>19,063</b>	<b>6,998</b>	<b>6,206</b>	<b>110,666</b>
<b>% of Job Type</b>	<b>2%</b>	<b>7%</b>	<b>8%</b>	<b>18%</b>	<b>3%</b>	<b>1%</b>	<b>6%</b>	<b>7%</b>	<b>20%</b>	<b>17%</b>	<b>6%</b>	<b>6%</b>	<b>110,668</b>

	NATRES_50	CONS_50	MANU_50	WHL_RET_50	TRN_UTL_50	INFO_50	FINANCE_50	PRO_BUS_50	ED_HEALTH_50	LE_HOSP_50	OT_SVCS_50	PUBADM_50	TOTEMP_50
<b>DE Statewide Totals</b>	<b>2,972</b>	<b>24,632</b>	<b>24,951</b>	<b>77,112</b>	<b>11,446</b>	<b>9,940</b>	<b>32,980</b>	<b>51,941</b>	<b>114,100</b>	<b>61,200</b>	<b>31,907</b>	<b>36,780</b>	
<b>% of Job Type</b>	<b>1%</b>	<b>5%</b>	<b>5%</b>	<b>17%</b>	<b>3%</b>	<b>2%</b>	<b>7%</b>	<b>11%</b>	<b>25%</b>	<b>13%</b>	<b>7%</b>	<b>8%</b>	<b>479,924</b>



Questions?

