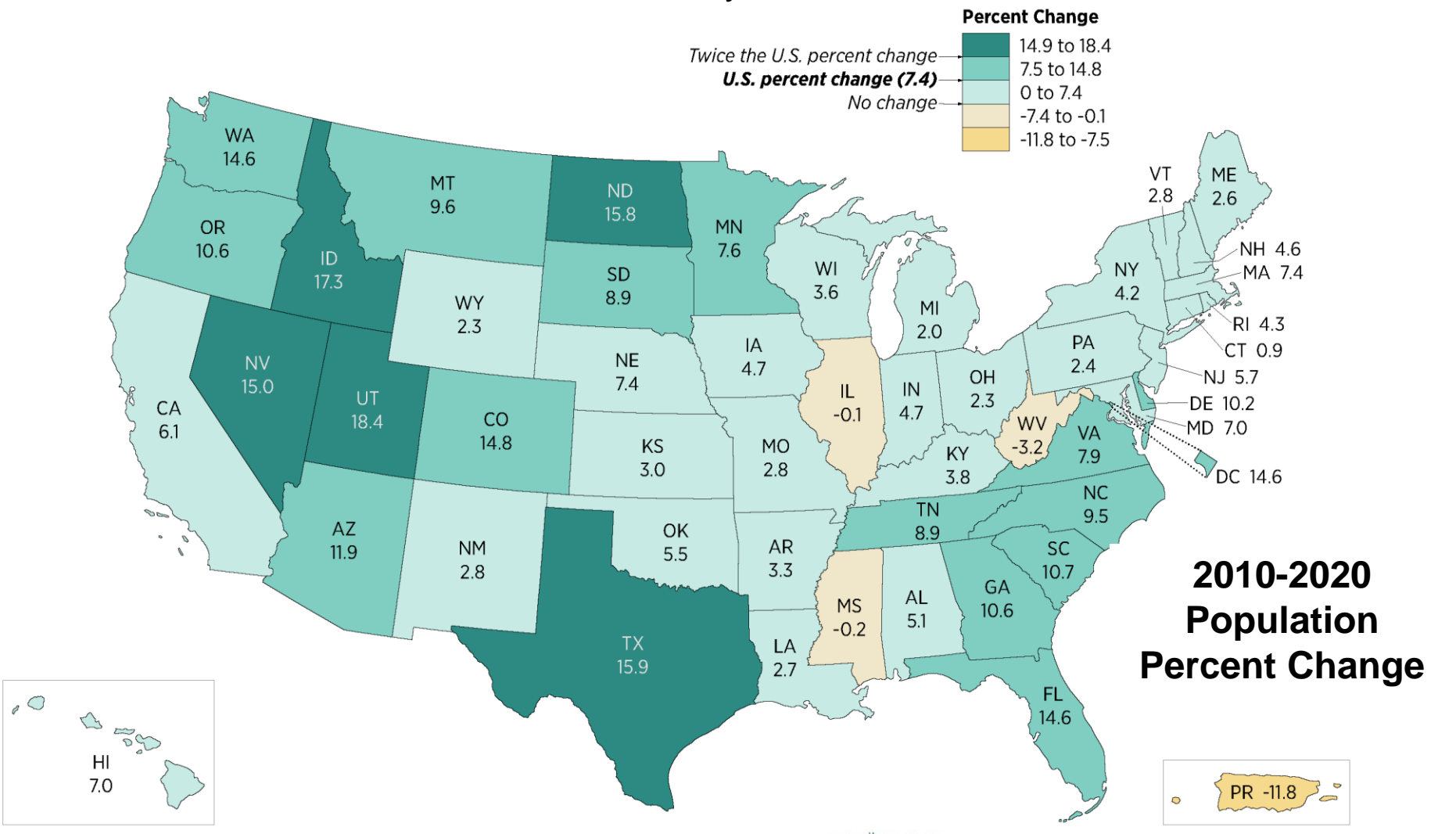


Demographics Update
WILMAPCO Council
January 2023



National Snapshot

- U.S. is GROWING, but SLOWING
- Population continues to “gray”
- Deaths ~~catching~~ caught up to Births
- Immigration becoming larger part of growth, but uneven
- More states having more births than deaths

In 2019: 4 States had more deaths than births

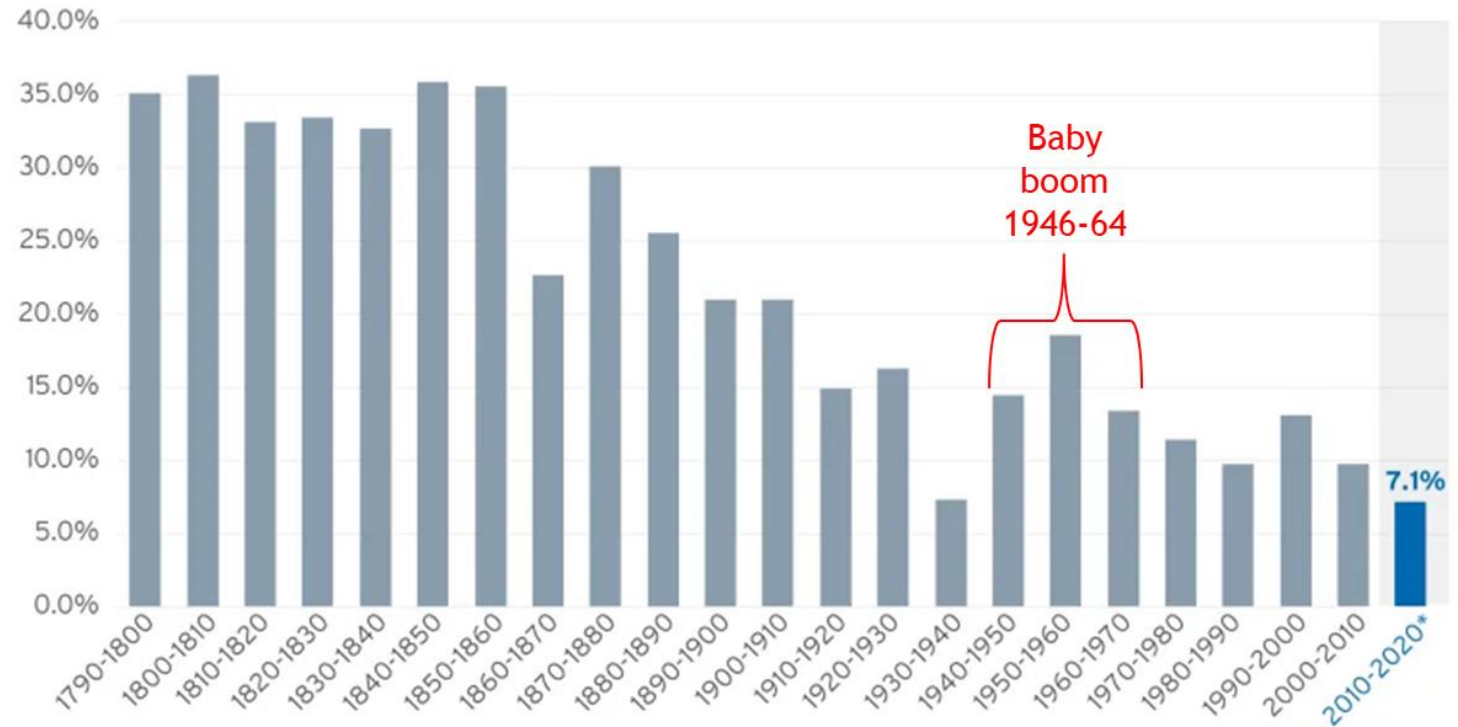
West Virginia	Maine	New Hampshire	Vermont
-4679	-2,262	-121	-53

In 2022, 24 States had more deaths than births*

Florida	Pennsylvania	Ohio	Michigan	West Virginia	Tennessee	Alabama	Kentucky	South Carolina	Missouri	Maine	Oregon
-40,216	-23,021	-19,543	-12,482	-12,158	-9,213	-8,590	-8,358	-7,460	-5,994	-5,943	-5,089
Mississippi	New Mexico	Arkansas	Oklahoma	New Hampshire	Vermont	Wisconsin	Montana	Delaware	Arizona	Rhode Island	Wyoming
-4,954	-4,295	-3,936	-3,283	-2,030	-1,806	-1,758	-1,686	-718	-566	-566	-490

* Impacted by COVID

Population Growth by Decade: 1790-2020

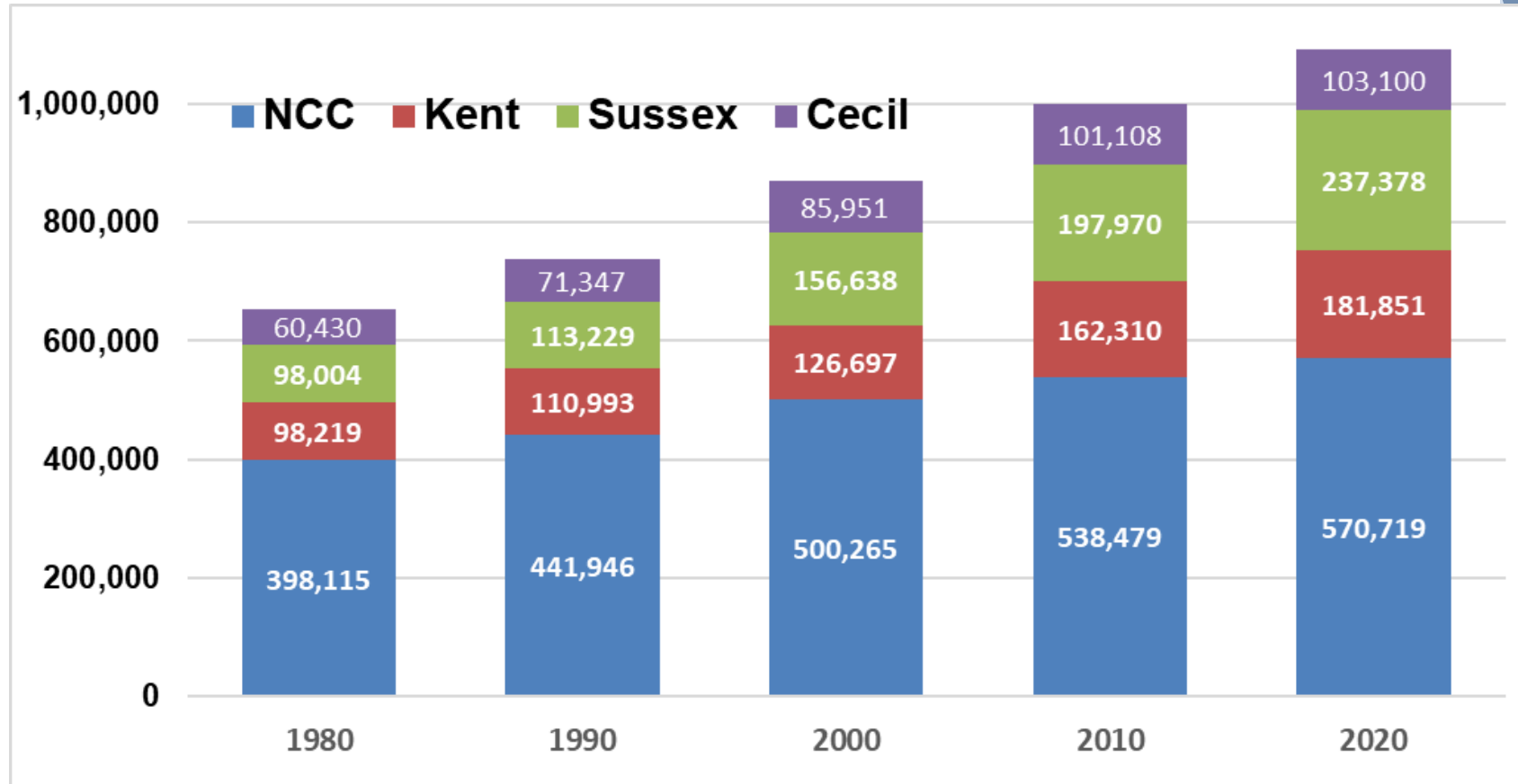


Where have we been?

Since 1980:

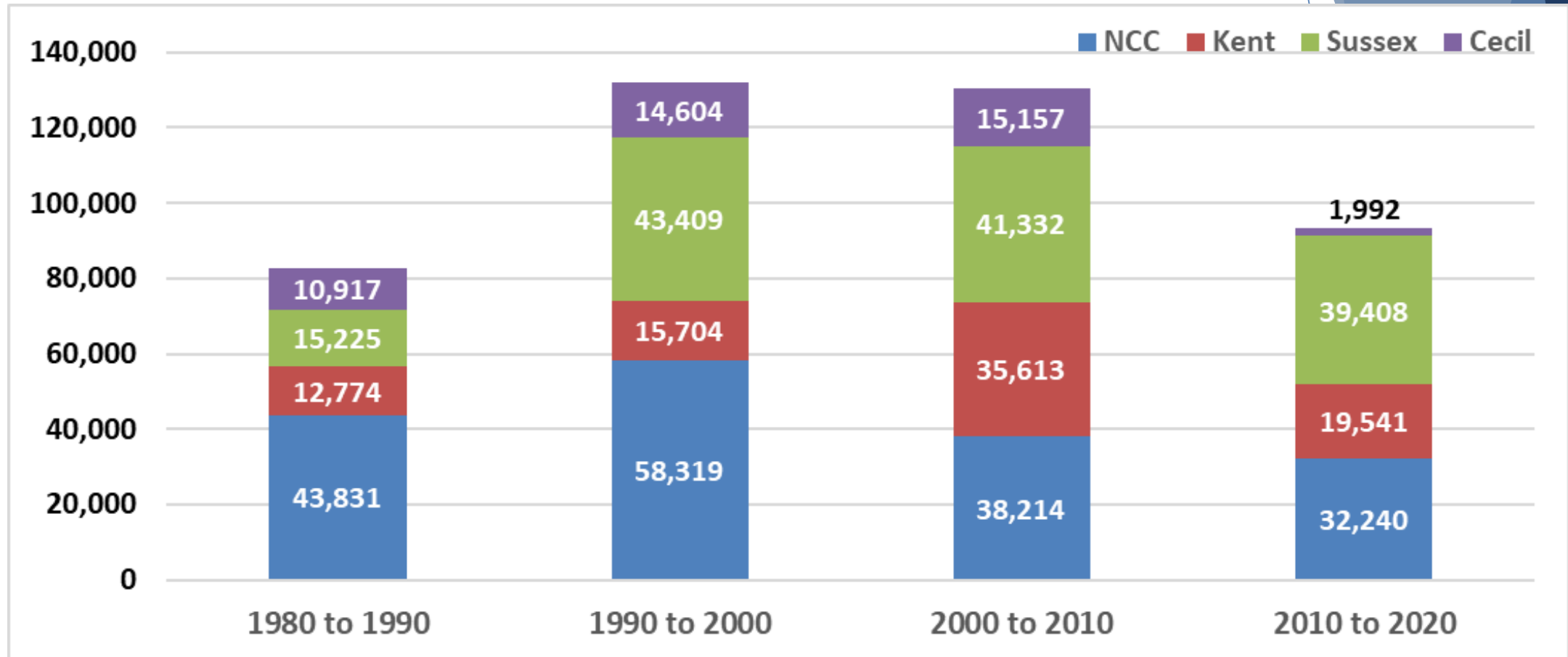
- Following similar national trends, with slightly faster pace
- 1990's fastest growing since WWII in NCC & Sussex
- 2000's for Kent (Smyrna area)
- Internal household changes shaping future growth 2020-2050

Total DE/Cecil Population by County: 1980-2020



Where have we been?

Total Population Growth by Decade: 1980-2020



**Total Growth
(DE only)**

**71,830
12.1%**

**117,432
17.6%**

**115,159
14.7%**

**91,189
10.2%**

**% Growth
United States**

9.8%

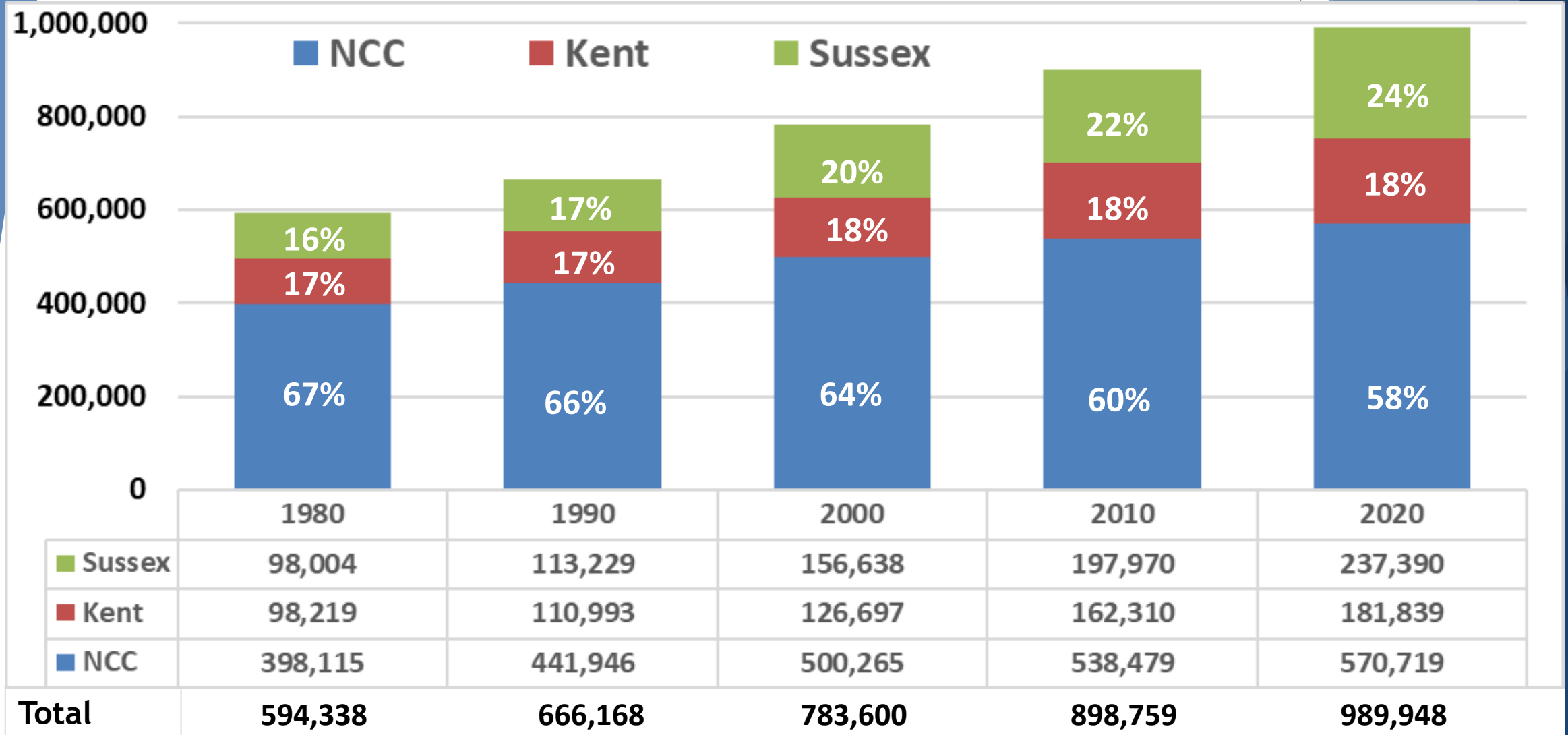
13.2%

9.7%

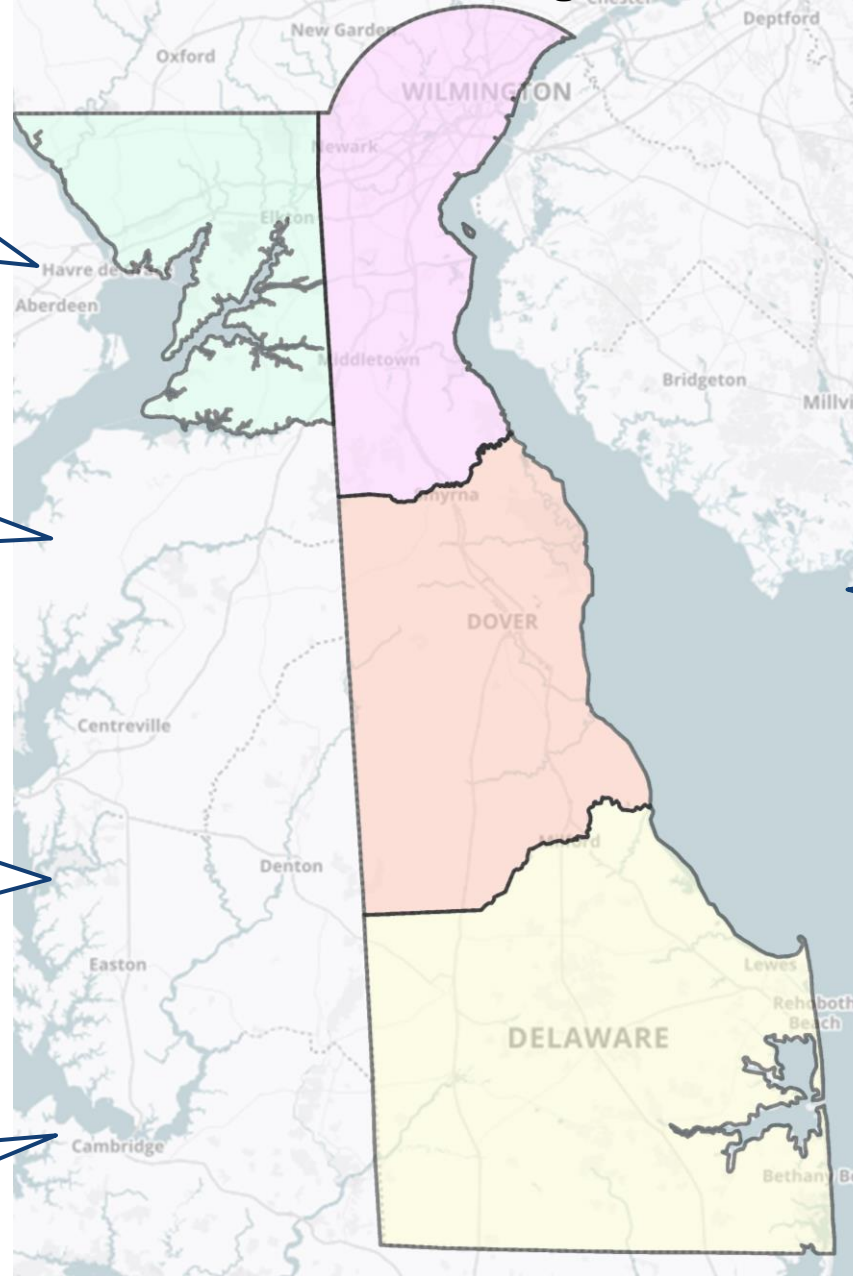
7.4%

Where have we been?

Total DE Population by County: 1980-2020



Internal Household Changes: 2000-2020



**How “old” are
we getting?
How “old” will
we get?**

**How many people
are owners/
renters of their
homes?**

**How many school-
age children do we
have?
How many births to
we have each year?**

**How many people
are in the labor
force?**

**How many
single-person
households?**

**Will migration
stay at its
current level?**

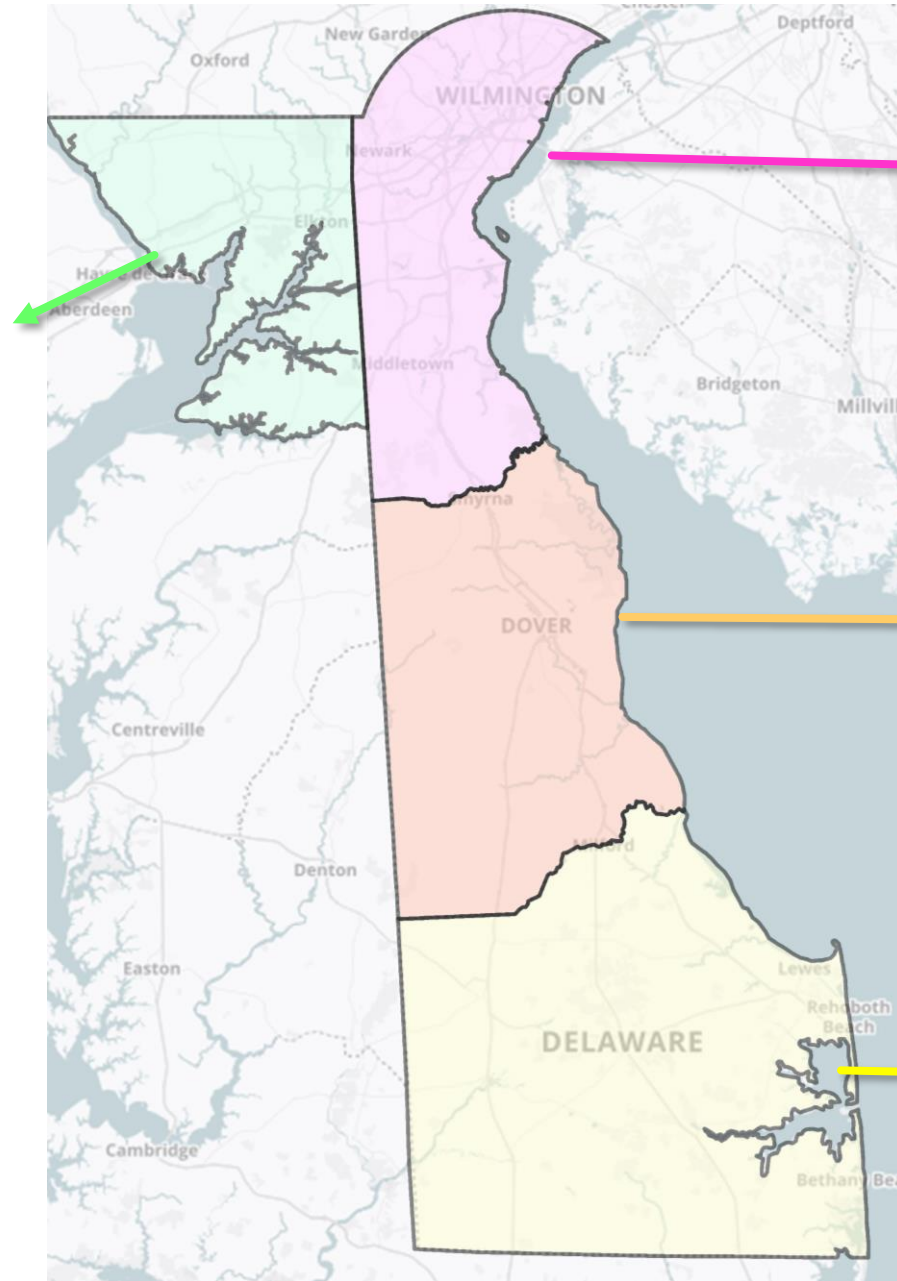
**How are
household sizes
changing?**

**How many will
be living in
group quarters?**

**How long do
seniors stay in
the workforce?**

Total Population Changes 2000-2020

Cecil	Population
2000	85,951
2020	103,725
Change	17,774
% Change	21%



New Castle	Population
2000	500,265
2020	570,719
Change	70,454
% Change	14%

Kent	Population
2000	126,697
2020	181,851
Change	55,154
% Change	44%

Sussex	Population
2000	156,638
2020	237,378
Change	80,740
% Change	52%

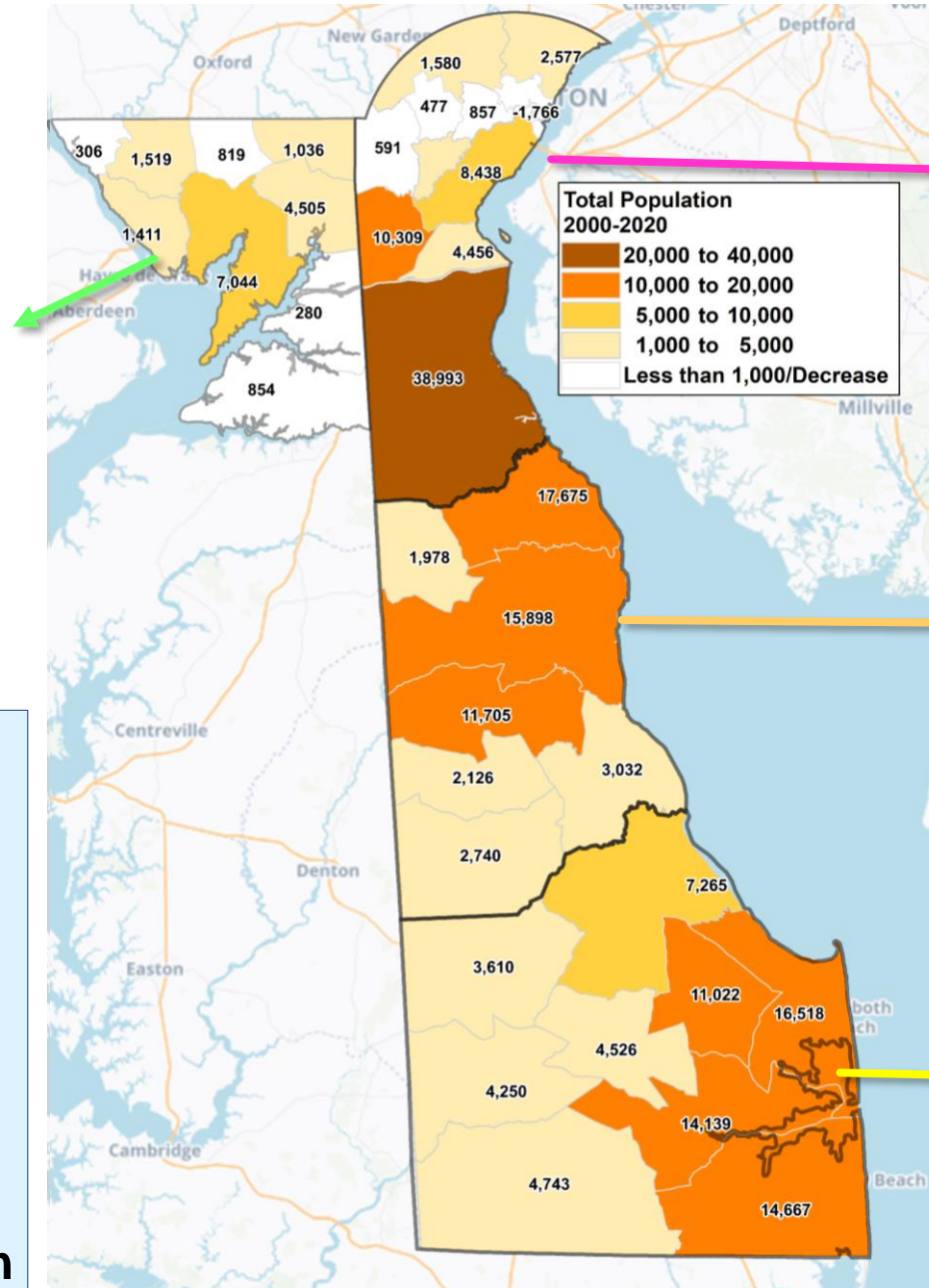
DE Statewide: + 206,000

Total Population Changes 2000-2020

Cecil	Population
2000	85,951
2020	103,725
Change	17,774
% Change	21%

Notables:

- ½ of NCC growth in SNCC, with low or declining growth in NNCC
- 88% of NCC population still live North of C&D canal
- 70% of Sussex growth in resort area



New Castle	Population
2000	500,265
2020	570,719
Change	70,454
% Change	14%

Kent	Population
2000	126,697
2020	181,851
Change	55,154
% Change	44%

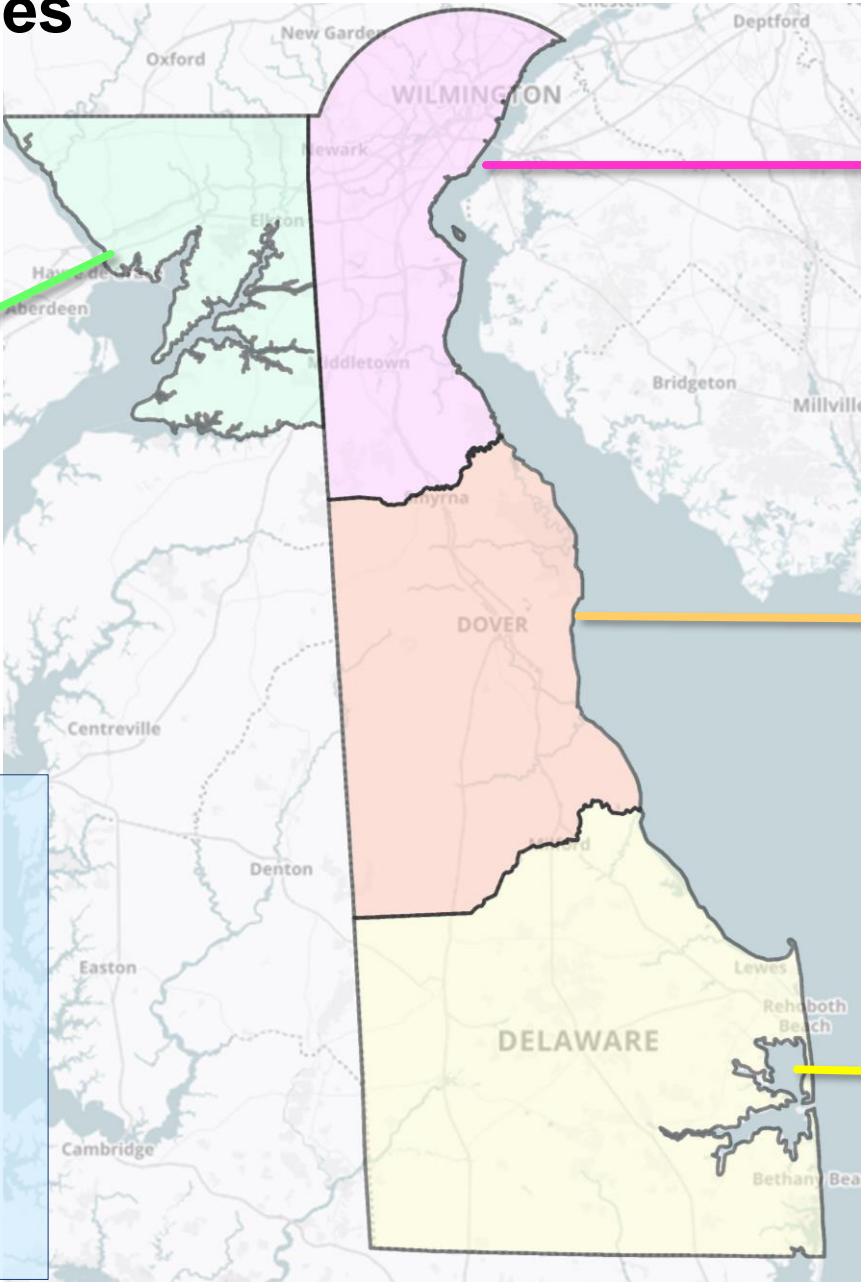
Sussex	Population
2000	156,638
2020	237,378
Change	80,740
% Change	52%

Total Population Changes

Ages 65+ 2000-2020

Cecil	65+ Population
2000	8,965
ACS 2021	16,337
Change	7,372
% Change	82%

% of Population		
County	2000	2020
NCC	11.6%	15.7%
Kent	11.7%	17.2%
Sussex	18.5%	28.3%
Cecil	10.4%	15.8%



New Castle	65+ Population
2000	57,903
ACS 2021	89,247
Change	31,344
% Change	54%

Kent	65+ Population
2000	14,801
ACS 2021	30,943
Change	16,142
% Change	109%

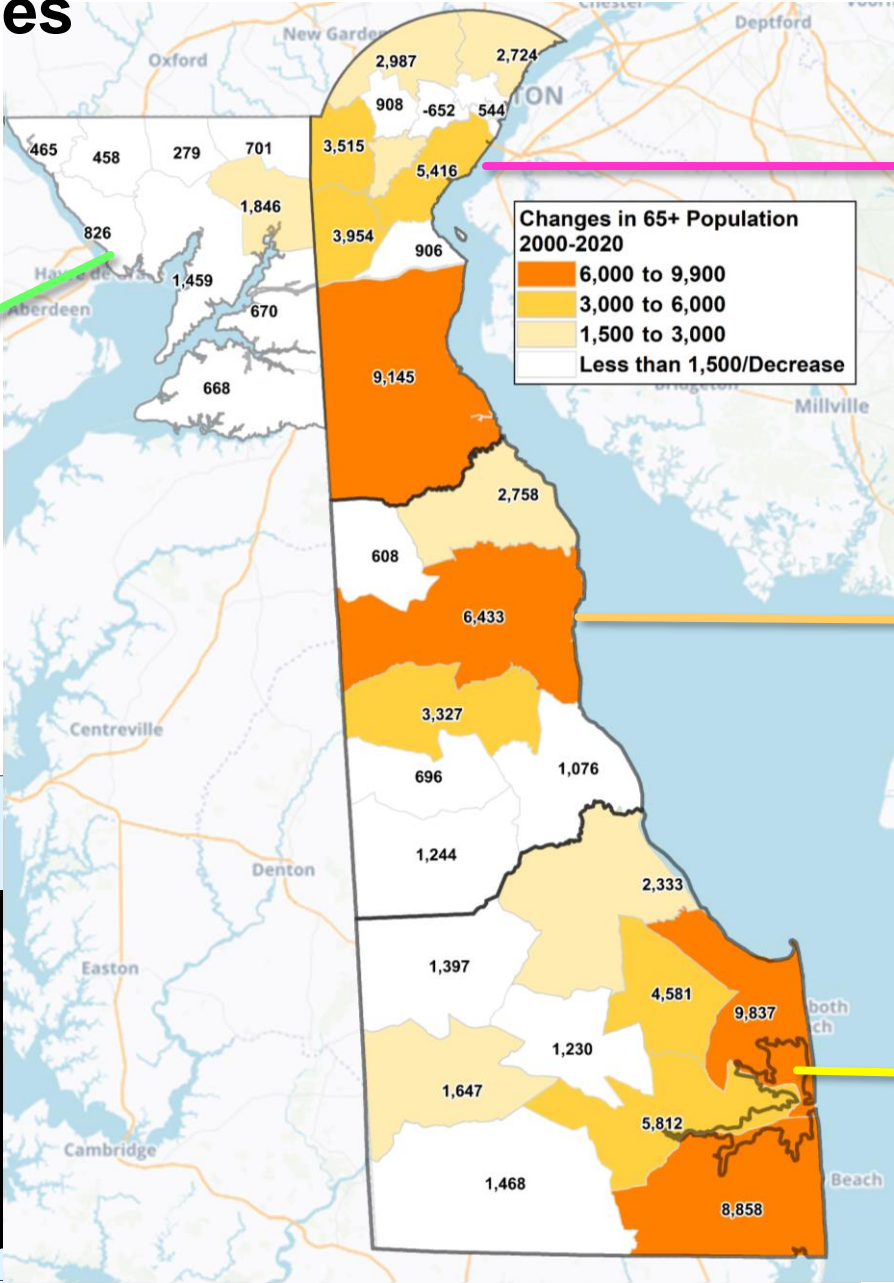
Sussex	65+ Population
2000	29,022
ACS 2021	66,185
Change	37,163
% Change	128%

DE Statewide: + 85,000

Total Population Changes

Ages 65+ 2000-2020

Cecil	65+ Population
2000	8,965
ACS 2021	16,337
Change	7,372
% Change	82%



New Castle	65+ Population
2000	57,903
ACS 2021	89,247
Change	31,344
% Change	54%

Kent	65+ Population
2000	14,801
ACS 2021	30,943
Change	16,142
% Change	109%

Sussex	65+ Population
2000	29,022
ACS 2021	66,185
Change	37,163
% Change	128%

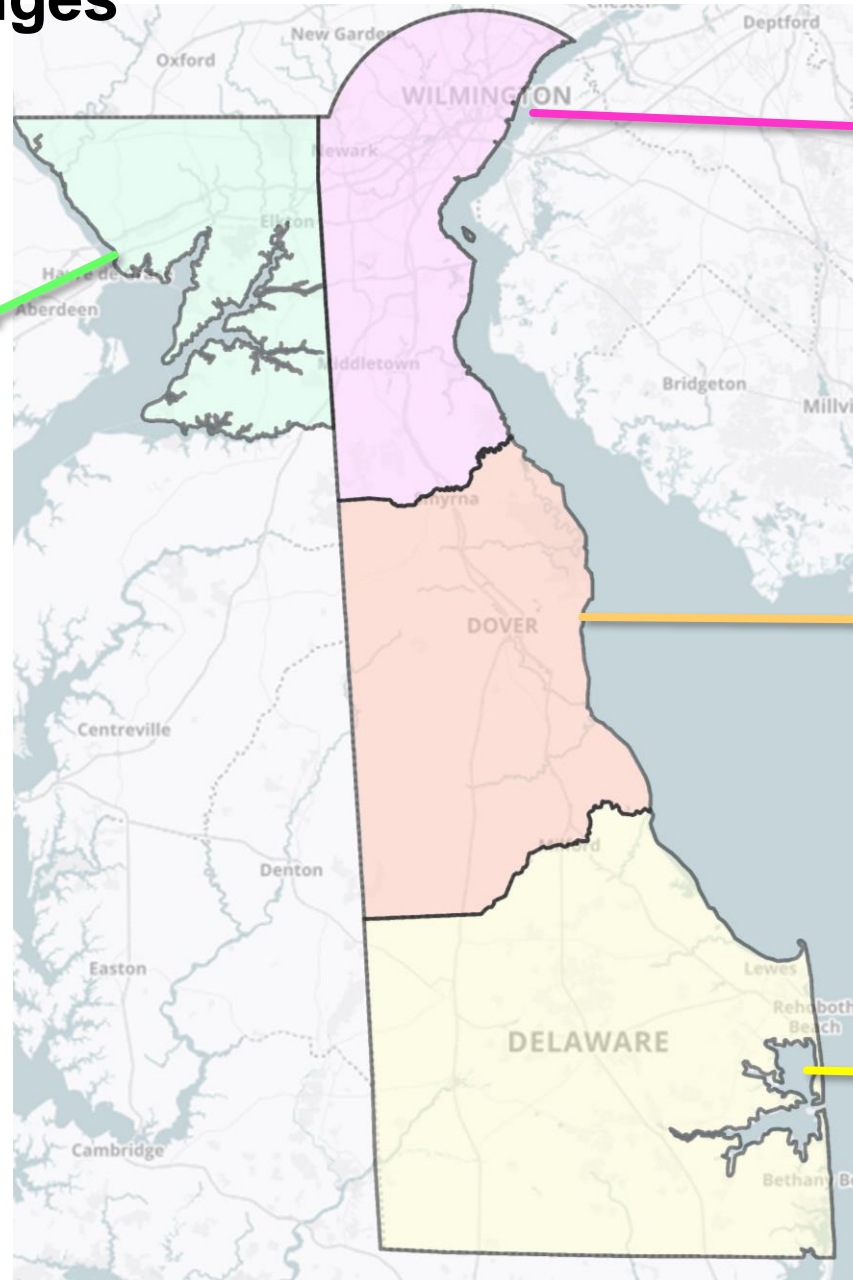
Notables:

District	2000	2021	Change	% Growth
Glasgow	1,352	5,306	3,954	292%
MOT	2,103	11,248	9,145	435%
New Castle	7,214	12,630	5,416	75%
Dover	7,770	14,203	6,433	83%
Lewes	5,784	15,621	9,837	170%
Milton	1,907	6,488	4,581	240%

Total Population Changes

Ages 85+ 2000-2020

Cecil	85+ Population
2000	780
ACS 2021	1,559
Change	779
% Change	100%



New Castle	85+ Population
2000	6,443
ACS 2021	10,365
Change	3,922
% Change	61%

Kent	85+ Population
2000	1,537
ACS 2021	3,122
Change	1,585
% Change	103%

Sussex	85+ Population
2000	2,569
ACS 2021	5,224
Change	2,655
% Change	103%

DE Statewide: + 8,100

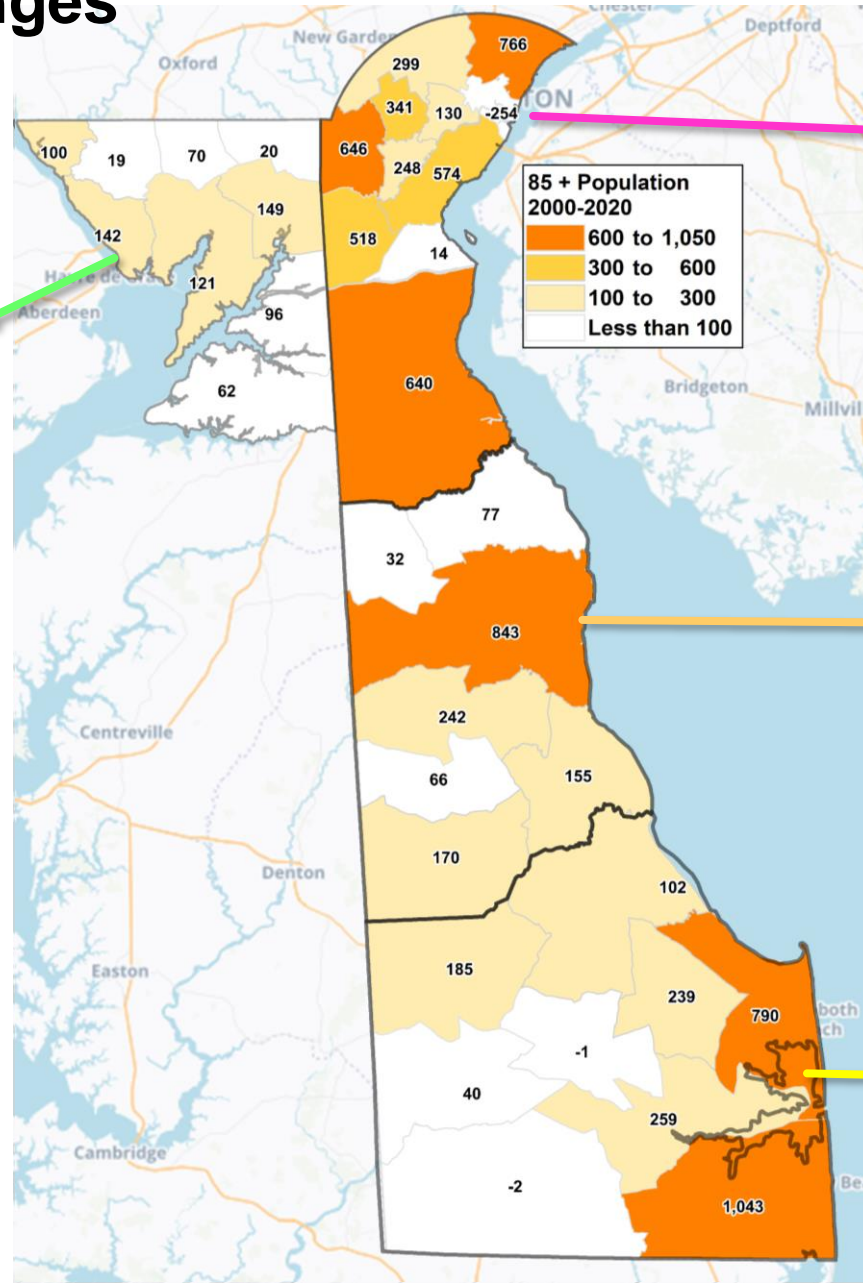
Total Population Changes

Ages 85+ 2000-2020

Cecil	85+ Population
2000	780
ACS 2021	1,559
Change	779
% Change	100%

Notables:

- Aging in place
- Partially dictated by Assisted living facilities construction



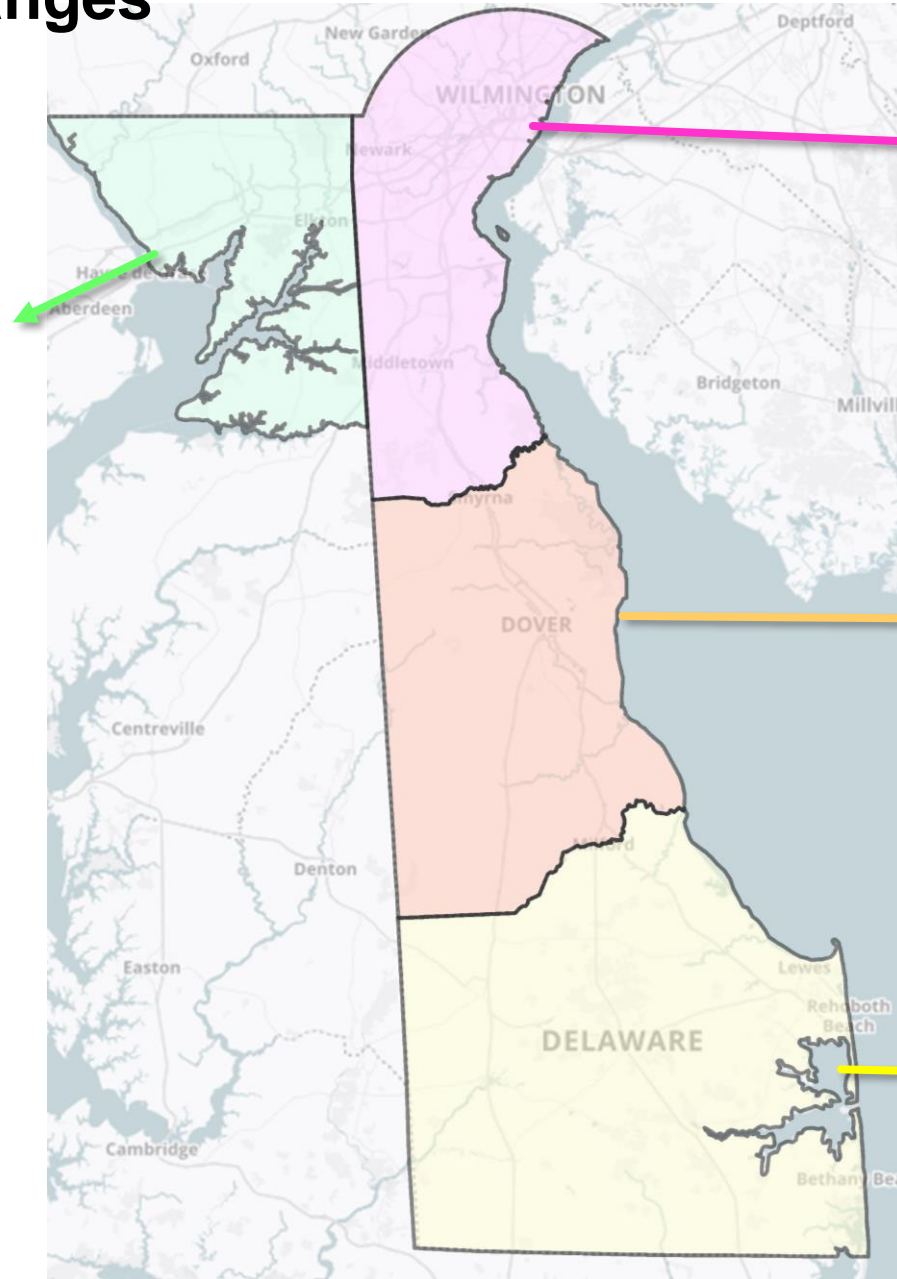
New Castle	85+ Population
2000	6,443
ACS 2021	10,365
Change	3,922
% Change	61%

Kent	85+ Population
2000	1,537
ACS 2021	3,122
Change	1,585
% Change	103%

Sussex	85+ Population
2000	2,569
ACS 2021	5,224
Change	2,655
% Change	103%

Total Population Changes Ages Under 18 2000-2020

Cecil	Under 18 Population
2000	23,996
2020	23,260
Change	-736
% Change	-3%



New Castle	Under 18 Population
2000	124,244
2020	120,843
Change	-3,401
% Change	-3%

Kent	Under 18 Population
2000	34,499
2020	42,046
Change	7,547
% Change	22%

Sussex	Under 18 Population
2000	35,219
2020	43,516
Change	8,297
% Change	24%

DE Statewide: + 13,600

Total Population Changes

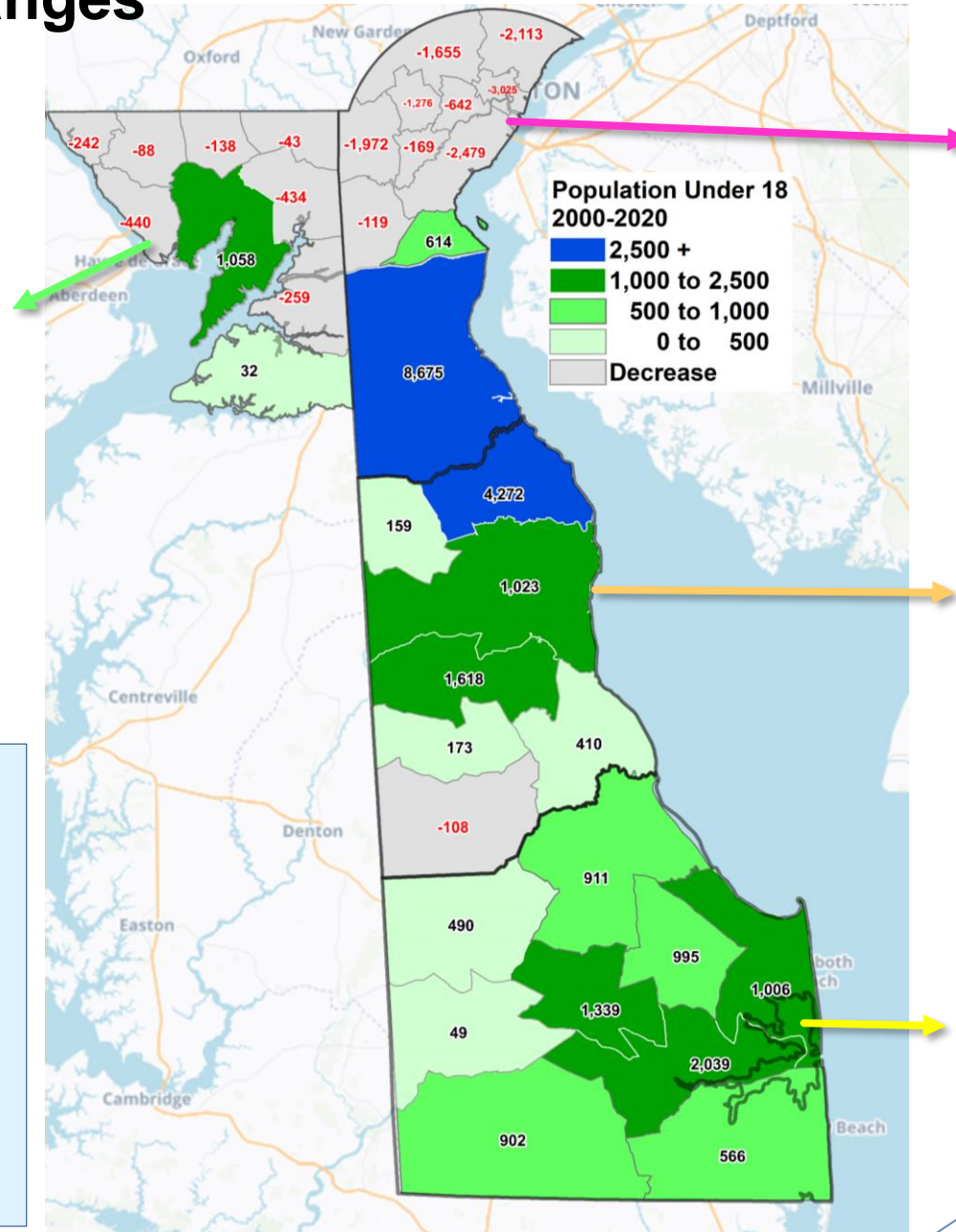
Ages Under 18

2000-2020

Cecil	Under 18 Population
2000	23,996
2020	23,260
Change	-736
% Change	-3%

Notables:

- Net loss of 9,200 North of C&D Canal
- MOT doubled in totals
- Most of Smyrna growth occurred between 2000-2010



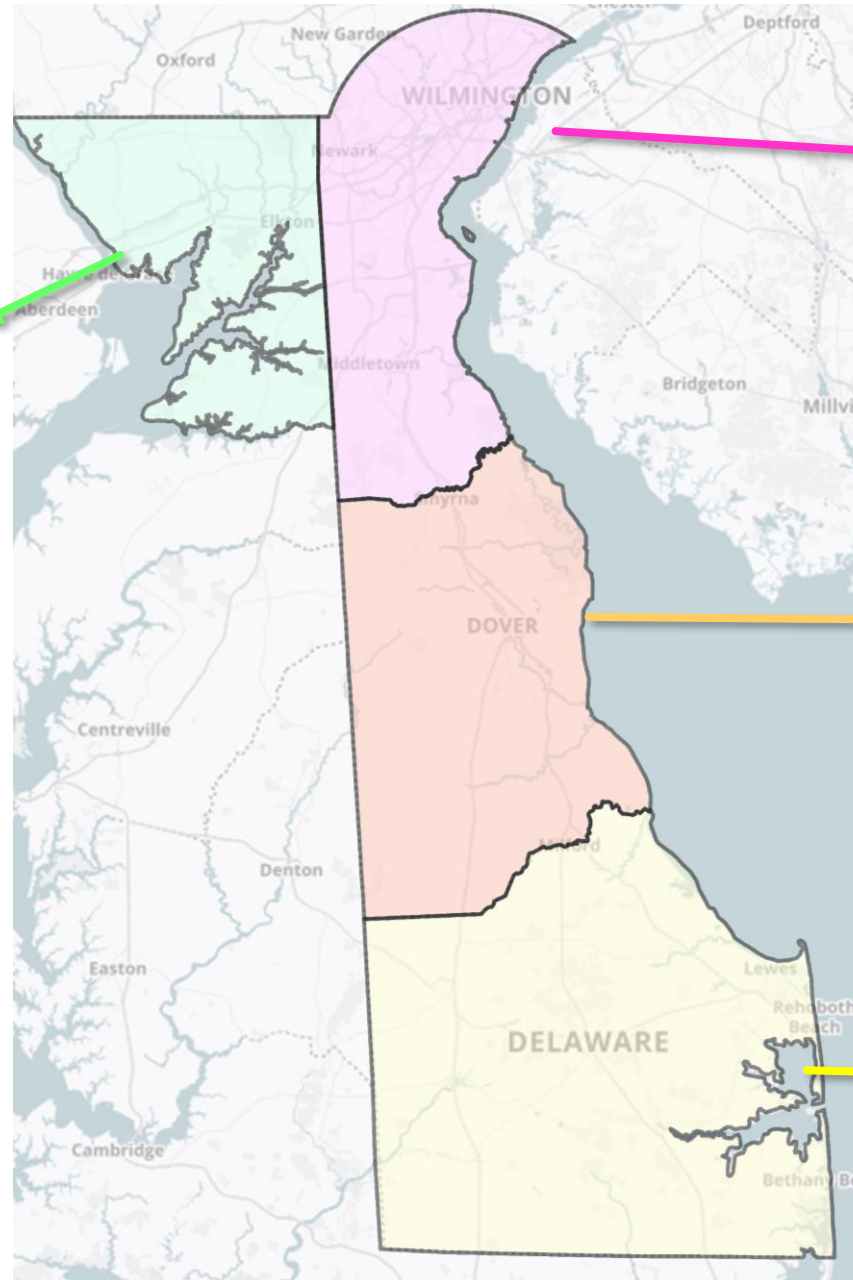
New Castle	Under 18 Population
2000	124,244
2020	120,843
Change	-3,401
% Change	-3%

Kent	Under 18 Population
2000	34,499
2020	42,046
Change	7,547
% Change	22%

Sussex	Under 18 Population
2000	35,219
2020	43,516
Change	8,297
% Change	24%

Single Person Households 2000-2020

Cecil	Single Person HHs (all ages)
2000	6,230
2020	9,258
Change	3,028
% Change	49%



New Castle	Single Person HHs (all Ages)
2000	32,381
2021 ACS	66,071
Change	33,690
% Change	104%

Kent	Single Person HHs
2000	10,841
2021 ACS	16,987
Change	6,146
% Change	57%

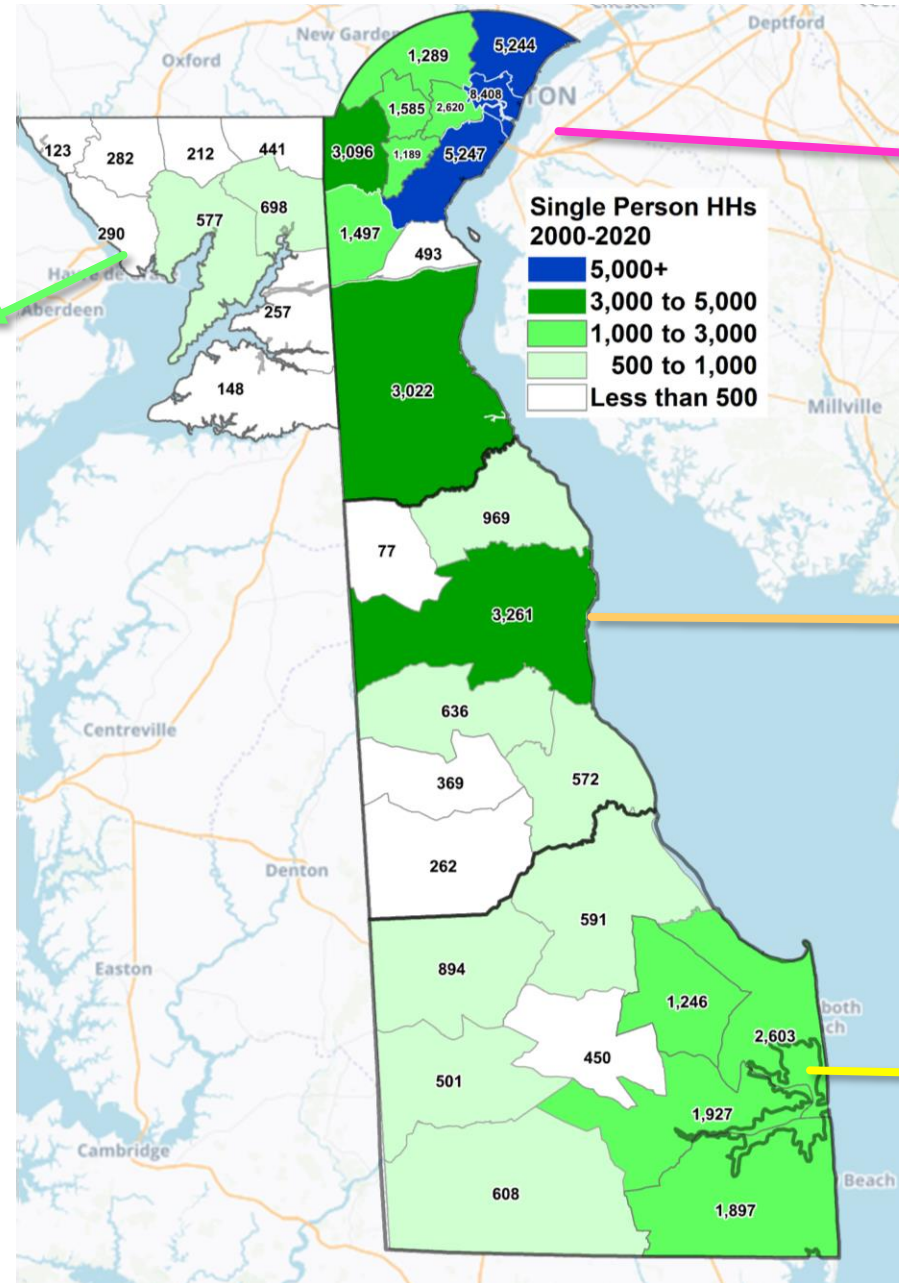
Sussex	Single Person HHs
2000	15,235
2021 ACS	25,952
Change	10,717
% Change	70%

Single Person Households 2000-2020

Cecil	Single Person HHs (all ages)
2000	6,230
2020	9,258
Change	3,028
% Change	49%

Notables:

- **NCC: More than doubled**
- **NCC: 55% of growth occurred in Brandywine, Wilmington and New Castle**



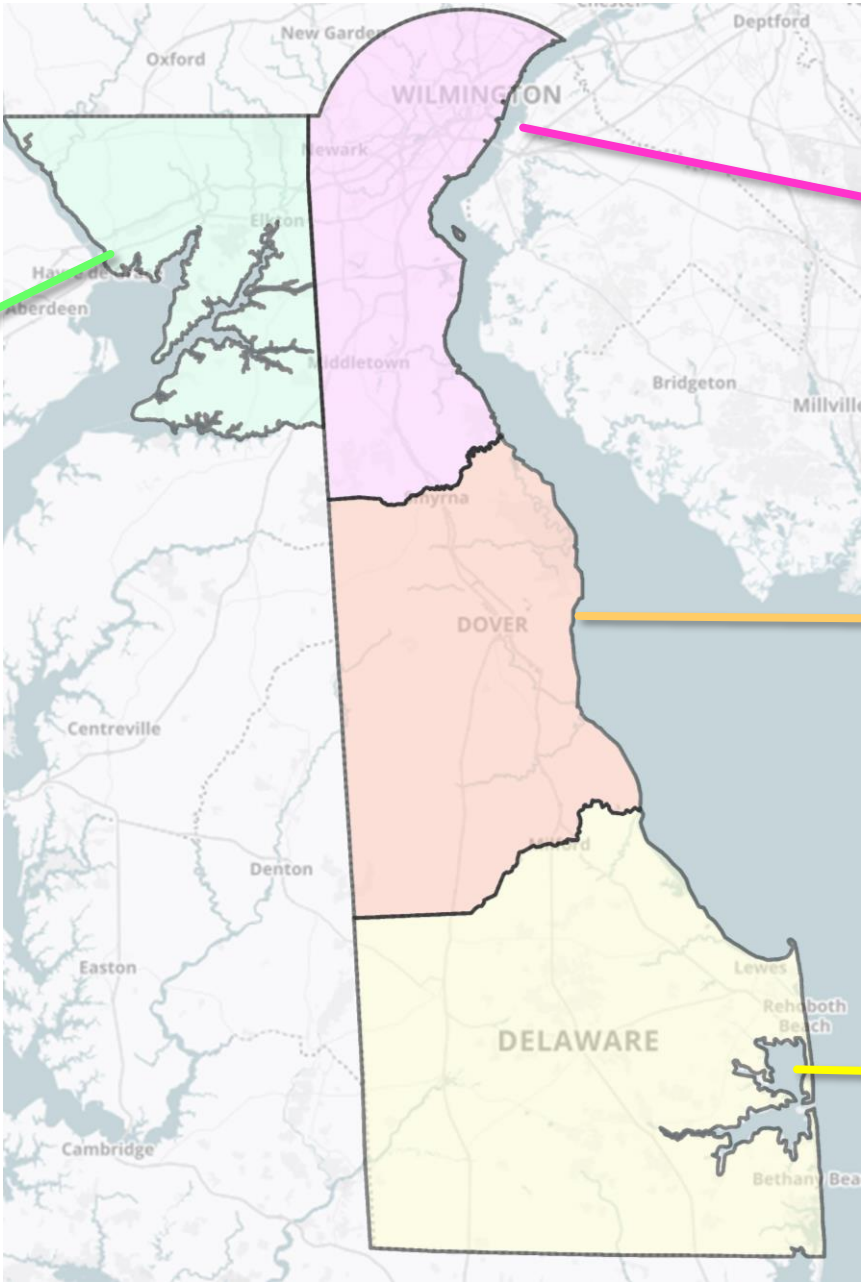
New Castle	Single Person HHs (all Ages)
2000	32,381
2021 ACS	66,071
Change	33,690
% Change	104%

Kent	Single Person HHs
2000	10,841
2021 ACS	16,987
Change	6,146
% Change	57%

Sussex	Single Person HHs
2000	15,235
2021 ACS	25,952
Change	10,717
% Change	70%

Single Person Households Age 65 & Over 2000-2020

Cecil	65+ Single Person HHs
2000	2,232
ACS 2021	3,772
Change	1,540
% Change	69%



New Castle	65+ Single Person HHs
2000	16,138
2021 ACS	23,975
Change	7,837
% Change	49%

Kent	65+ Single Person HHs
2000	3,962
2021 ACS	6,872
Change	2,910
% Change	73%

Sussex	65+ Single Person HHs
2000	6,971
2021 ACS	14,102
Change	7,131
% Change	102%

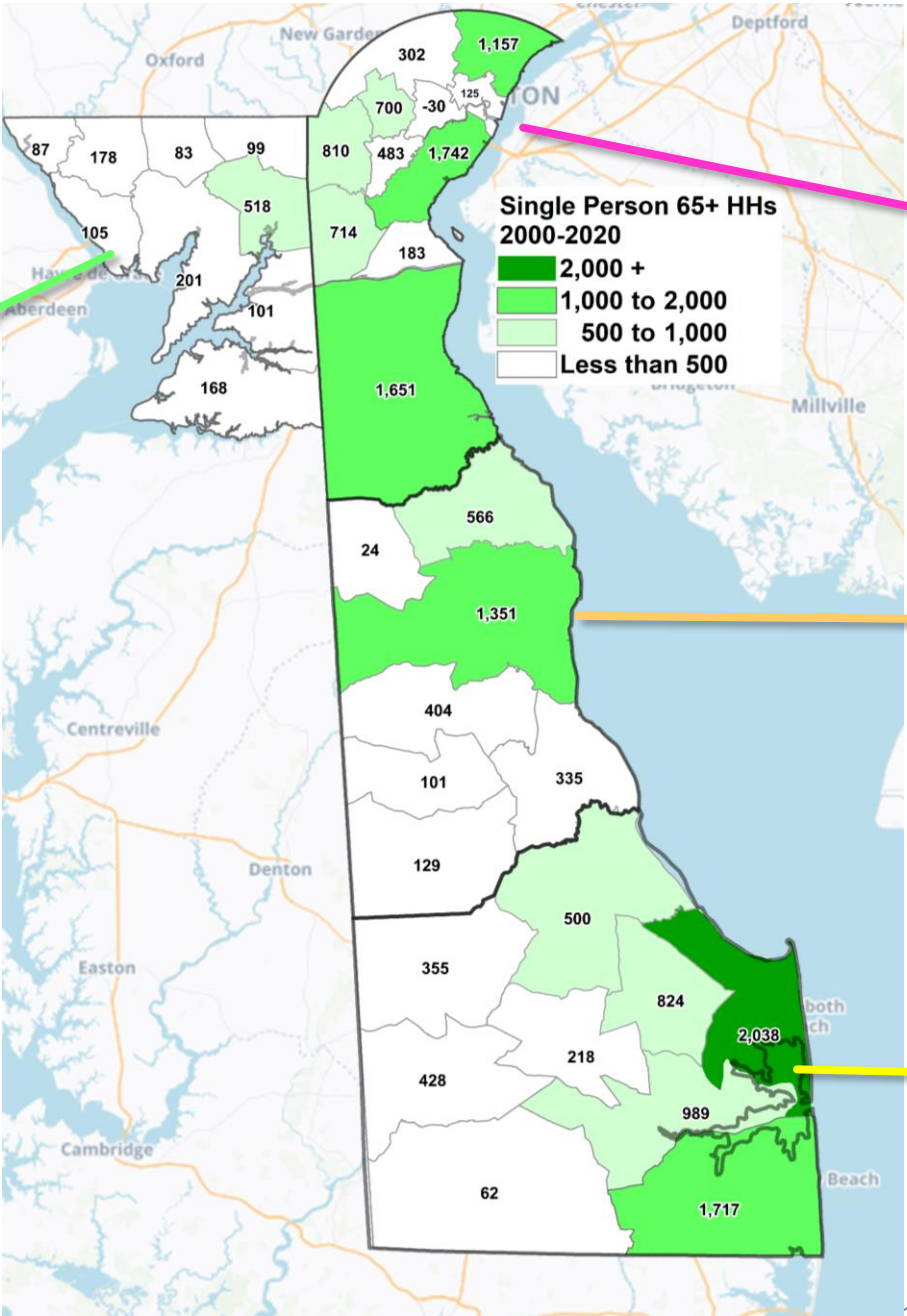
Single Person Households Age 65 & Over 2000-2020

Cecil	65+ Single Person HHs
2000	2,232
ACS 2021	3,772
Change	1,540
% Change	69%

Notables:

- Mobility Impacts:
Decline in zero-car households

	Zero Car Households		Households with 3+ Vehicles	
	2000	2021	2000	2021
NCC	8.8%	6.7%	15.4%	18.8%
Kent	7.8%	6.7%	18.2%	23.0%
Sussex	5.8%	3.4%	17.9%	23.4%



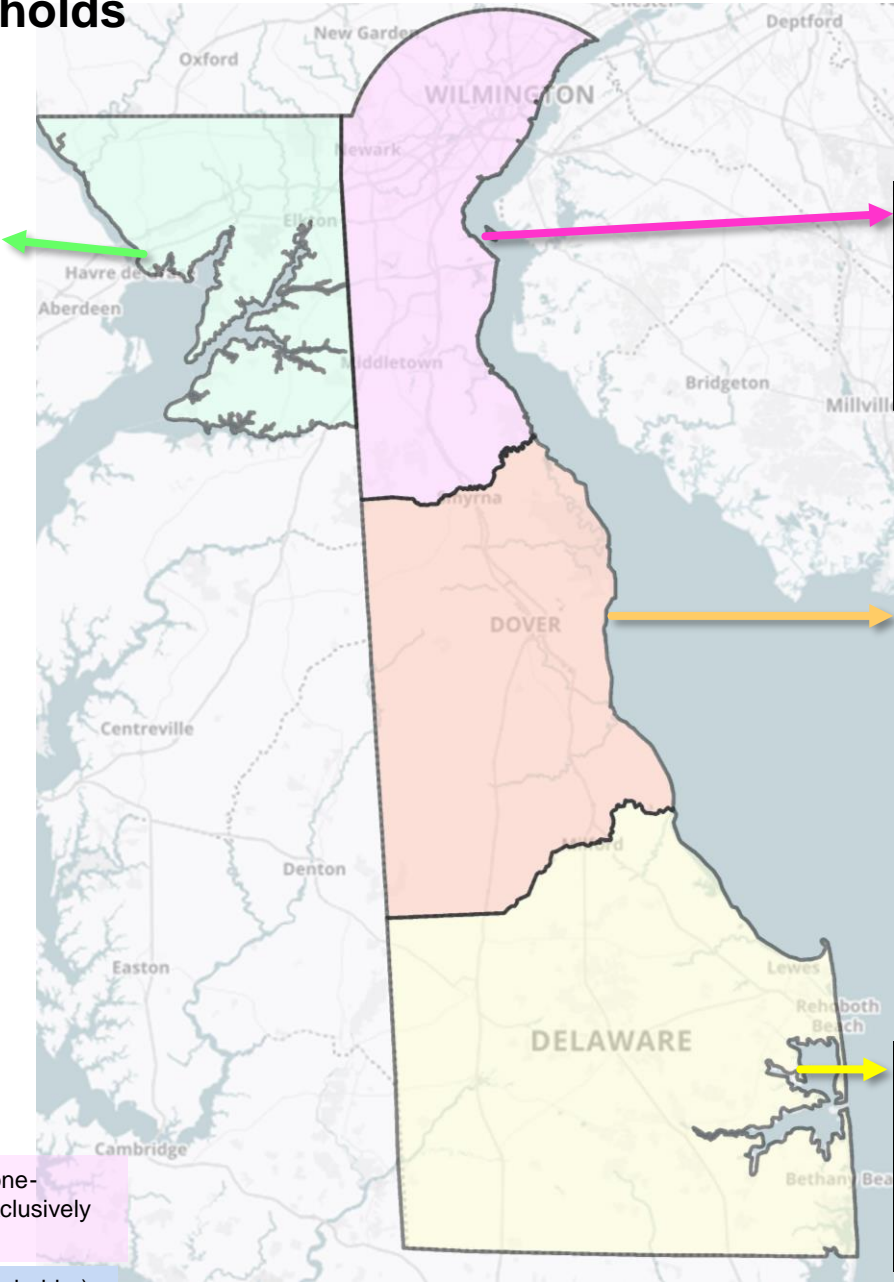
New Castle 65+ Single Person HHs	
2000	16,138
2021 ACS	23,975
Change	7,837
% Change	49%

Kent 65+ Single Person HHs	
2000	3,962
2021 ACS	6,872
Change	2,910
% Change	73%

Sussex 65+ Single Person HHs	
2000	6,971
2021 ACS	14,102
Change	7,131
% Change	102%

Family / Non-Family Households 2000-2020

Cecil	Family	Non-Family
2000	23,350	7,907
2020	27,191	11,481
Change	3,841	3,574
% Change	16%	45%



New Castle	Family	Non-Family
2000	127,106	61,829
2021 ACS	136,967	81,035
Change	9,861	19,206
% Change	8%	31%

Kent	Family	Non-Family
2000	33,615	13,609
2021 ACS	45,514	21,206
Change	11,899	7,597
% Change	35%	56%

Sussex	Family	Non-Family
2000	43,869	18,708
2021 ACS	65,553	30,822
Change	21,684	12,114
% Change	49%	65%

A nonfamily household consists of a householder living alone (a one-person household) or where the householder shares the home exclusively with people to whom he/she is not related.

A family is a group of two people or more (one of whom is the householder) related by birth, marriage, or adoption and residing together

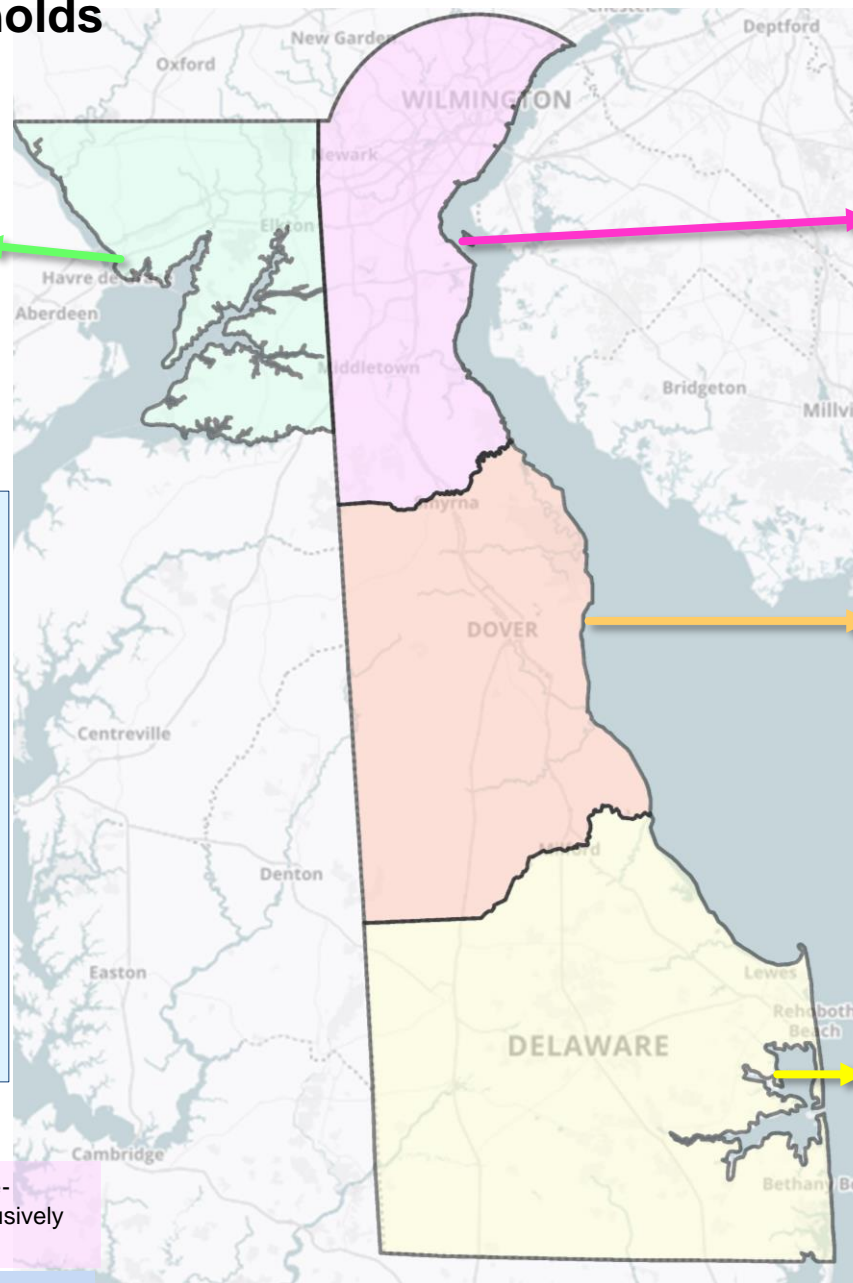
Family / Non-Family Households 2000-2020

Cecil	Family	Non-Family
2000	23,350	7,907
2020	27,191	11,481
Change	3,841	3,574
% Change	16%	45%

Avg. Household Sizes:

	Family		Non-Family	
	2000	2021	2000	2021
NCC	3.52	3.27	1.29	1.27
Kent	3.61	3.24	1.26	1.31
Sussex	4.06	2.96	1.24	1.21
Cecil	3.26	3.24	1.51	1.23

- NCC: 2/3 of net new Households are non-family



New Castle	Family	Non-Family
2000	127,106	61,829
2021 ACS	136,967	81,035
Change	9,861	19,206
% Change	8%	31%

Kent	Family	Non-Family
2000	33,615	13,609
2021 ACS	45,514	21,206
Change	11,899	7,597
% Change	35%	56%

Sussex	Family	Non-Family
2000	43,869	18,708
2021 ACS	65,553	30,822
Change	21,684	12,114
% Change	49%	65%

A nonfamily household consists of a householder living alone (a one-person household) or where the householder shares the home exclusively with people to whom he/she is not related.

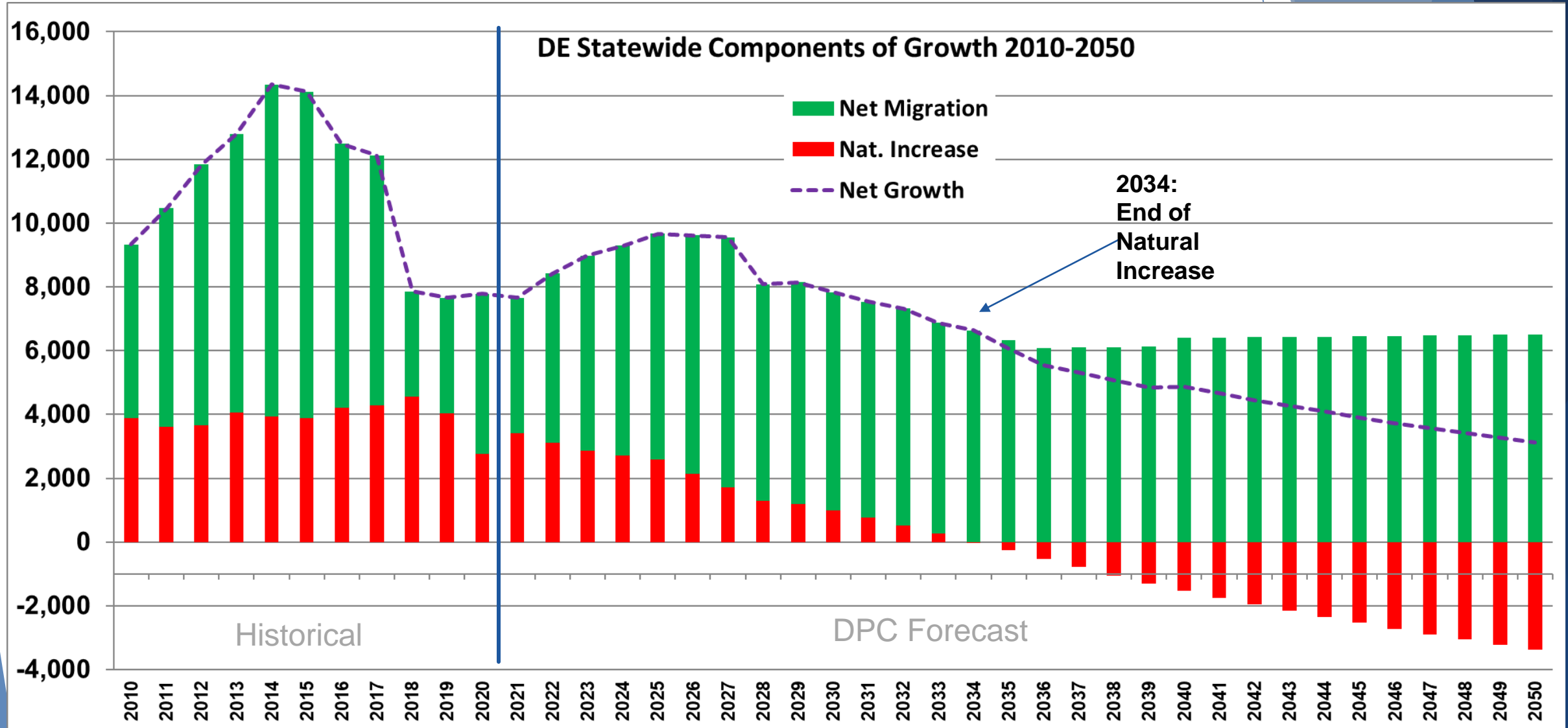
A family is a group of two people or more (one of whom is the householder) related by birth, marriage, or adoption and residing together

What does all this tell us about future growth?

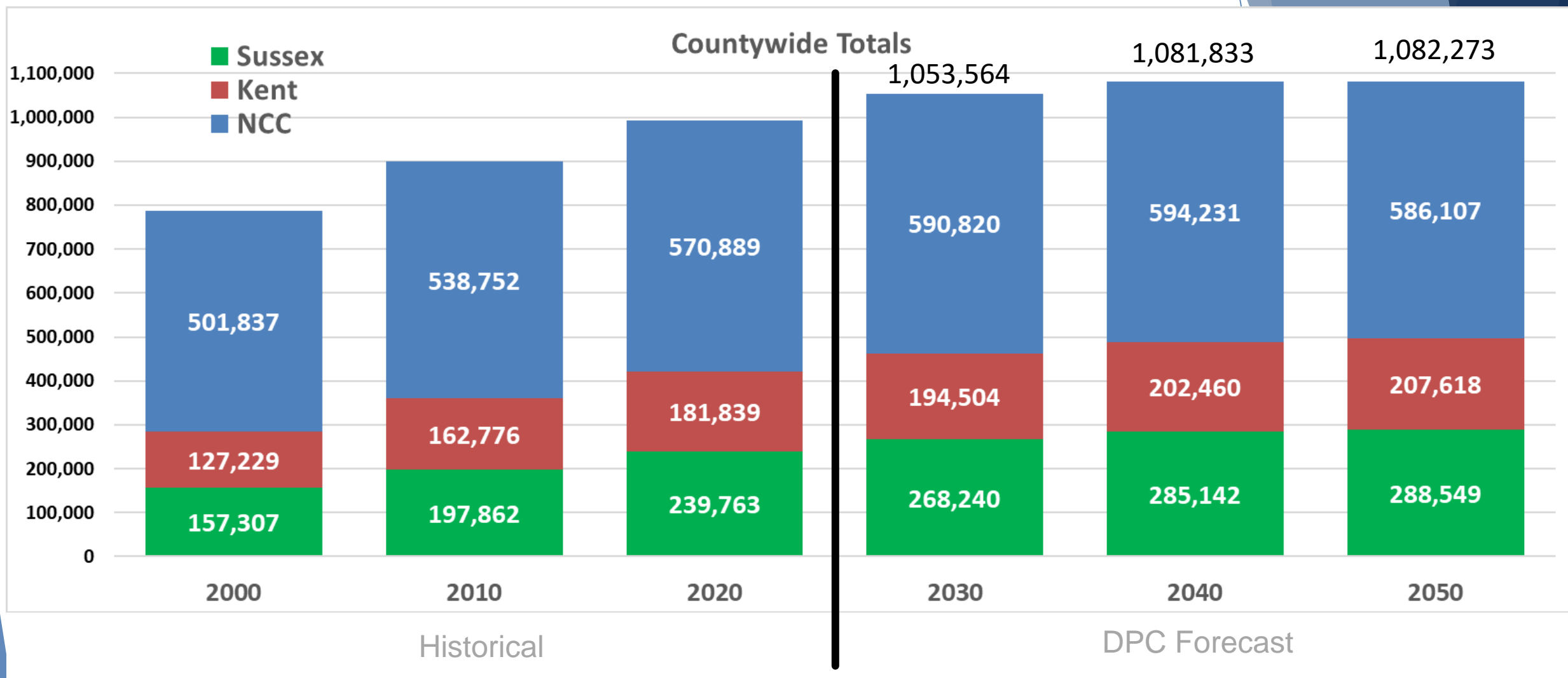
The background of the slide features an abstract design composed of various overlapping triangles and polygons in different shades of blue, ranging from light sky blue to deep navy blue. These shapes are primarily concentrated on the right side of the slide, creating a dynamic, modern aesthetic. The left side of the slide is mostly white, providing a clear space for the text.

What does all this tell us about future growth?

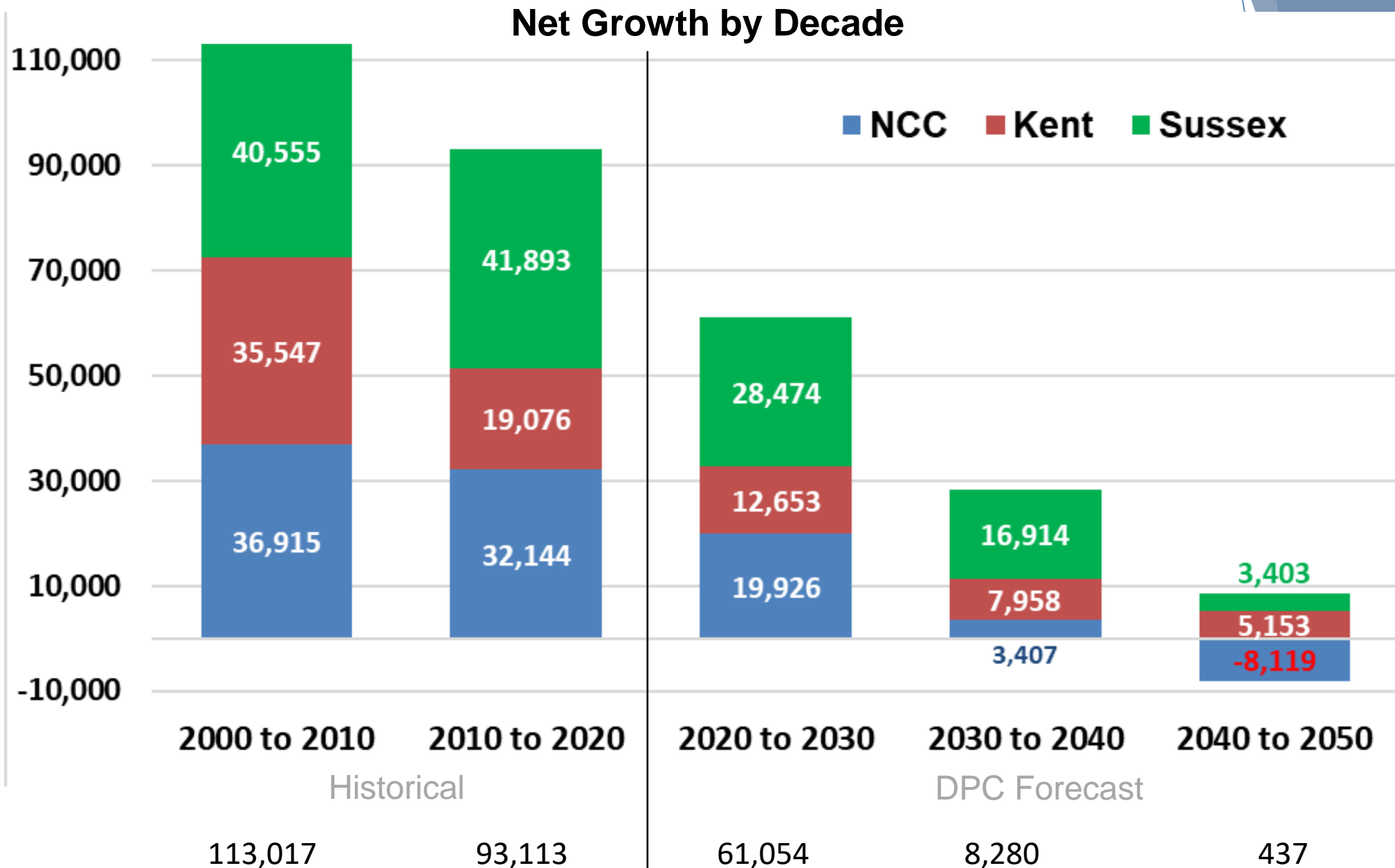
- Sets starting point for rate of Natural Increase
- Determines reliance on outside factors for growth (i.e. economics, migration, etc....)



What does all this tell us about future growth?



What does all this tell us about future growth?



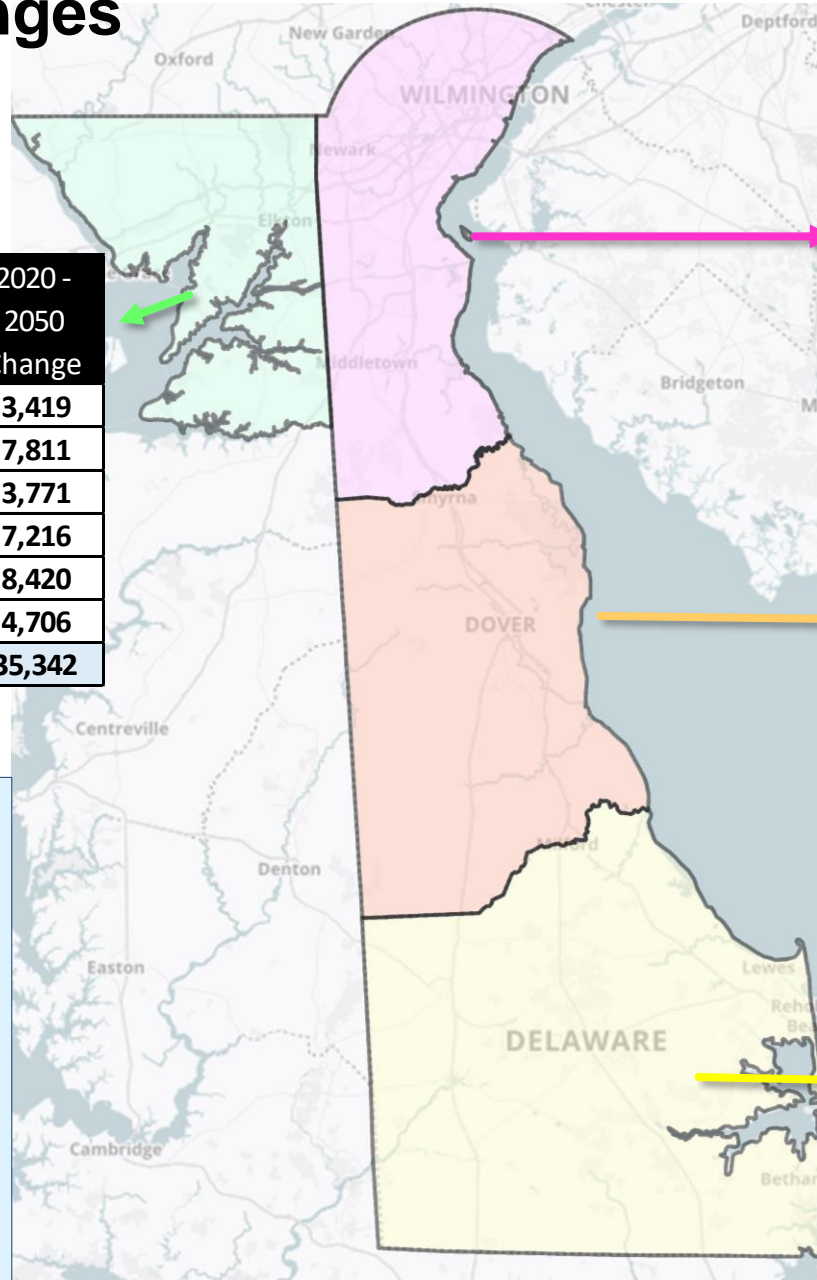
Total Population Changes

By age

2020-2050

Cecil	2020	2030	2040	2050	2020 - 2050 Change
0 to 4	5,254	6,643	8,007	8,673	3,419
5 to 19	19,197	18,463	23,160	27,008	7,811
20 to 29	11,857	13,893	13,938	15,628	3,771
30 to 64	49,654	48,465	51,727	56,870	7,216
65 to 84	15,341	21,794	23,624	23,761	8,420
85 +	1,795	2,796	4,989	6,501	4,706
Total	103,098	112,054	125,445	138,440	35,342

- Workforce size stagnant Statewide, falling in NCC
- Assisted living demand?
- School district sizes?



New Castle	2020	2030	2040	2050	2020 - 2050 Change
0 to 4	31,516	32,185	30,805	29,841	-1,675
5 to 17	89,030	85,626	85,750	82,184	-6,846
18 to 29	93,454	86,692	80,970	82,022	-11,433
30 to 64	263,497	262,190	262,405	256,538	-6,958
65 to 84	82,300	110,417	112,927	108,904	26,605
85 +	11,099	13,712	21,372	26,621	15,522
Total	570,896	590,822	594,229	586,111	15,215

Kent	2020	2030	2040	2050	2020 - 2050 Change
0 to 4	10,911	11,406	11,384	11,339	428
5 to 17	30,240	30,200	30,870	30,854	613
18 to 29	29,764	29,695	29,264	29,918	155
30 to 64	79,584	82,906	87,698	91,549	11,965
65 to 84	27,745	34,911	35,982	35,123	7,378
85 +	3,596	5,385	7,261	8,835	5,239
Total	181,839	194,504	202,460	207,618	25,778

Sussex County	2020	2030	2040	2050	2020 - 2050 Change
0 to 4	11,574	12,363	13,232	11,865	291
5 to 17	32,673	32,373	35,073	35,517	2,843
18 to 29	29,025	33,587	32,577	33,390	4,365
30 to 64	100,793	103,428	112,548	118,692	17,900
65 to 84	57,190	71,819	71,774	66,362	9,173
85 +	8,501	14,659	19,939	22,720	14,219
Total	239,755	268,229	285,143	288,546	48,791

Saving for another day.....

- Employment Projections

- Labor Force
- Job Types

- Other Projections

- Seasonal
- Municipal
- Small area

- Other Transportation – Related Trends

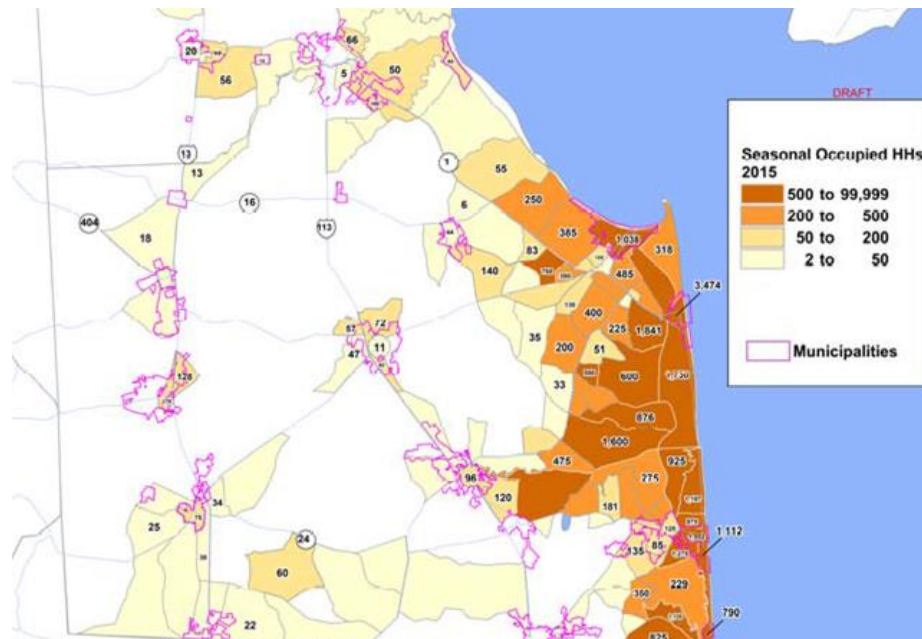
- 0 car households vs. households with 3+ vehicles
- Rent vs. Owning
- Urban / Rural Boundaries

Labor Force Participation by Age

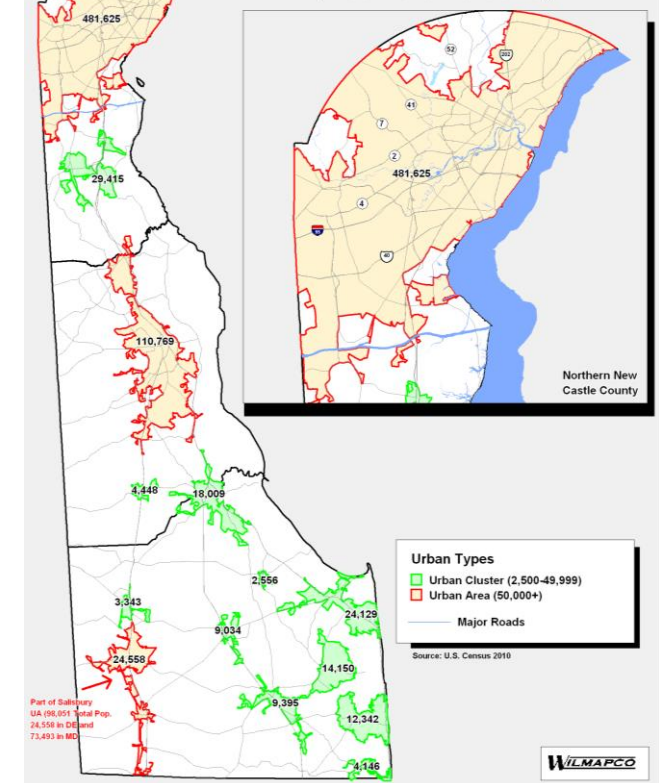
Age Group	2001	2011	2021	2031*
16 to 24	65%	55%	56%	51%
25 to 54	84%	82%	82%	81%
55 to 64	60%	64%	65%	68%
65 to 74	20%	26%	26%	31%
75 and older	5%	8%	9%	11%

Source: BLS

Seasonal Population Estimates



2010 Urbanized Areas
(Delaware Portions)



Questions?