




LEGEND

-  EXISTING ROUTE
-  RECOMMENDED ROUTE CHANGE
-  ROUTE SEGMENT NO LONGER SERVED



Route 25: Alignment to Delaware City via Tybouts Corner Park & Ride and Wrangle Hill Park & Ride/ New DMV

DESCRIPTION

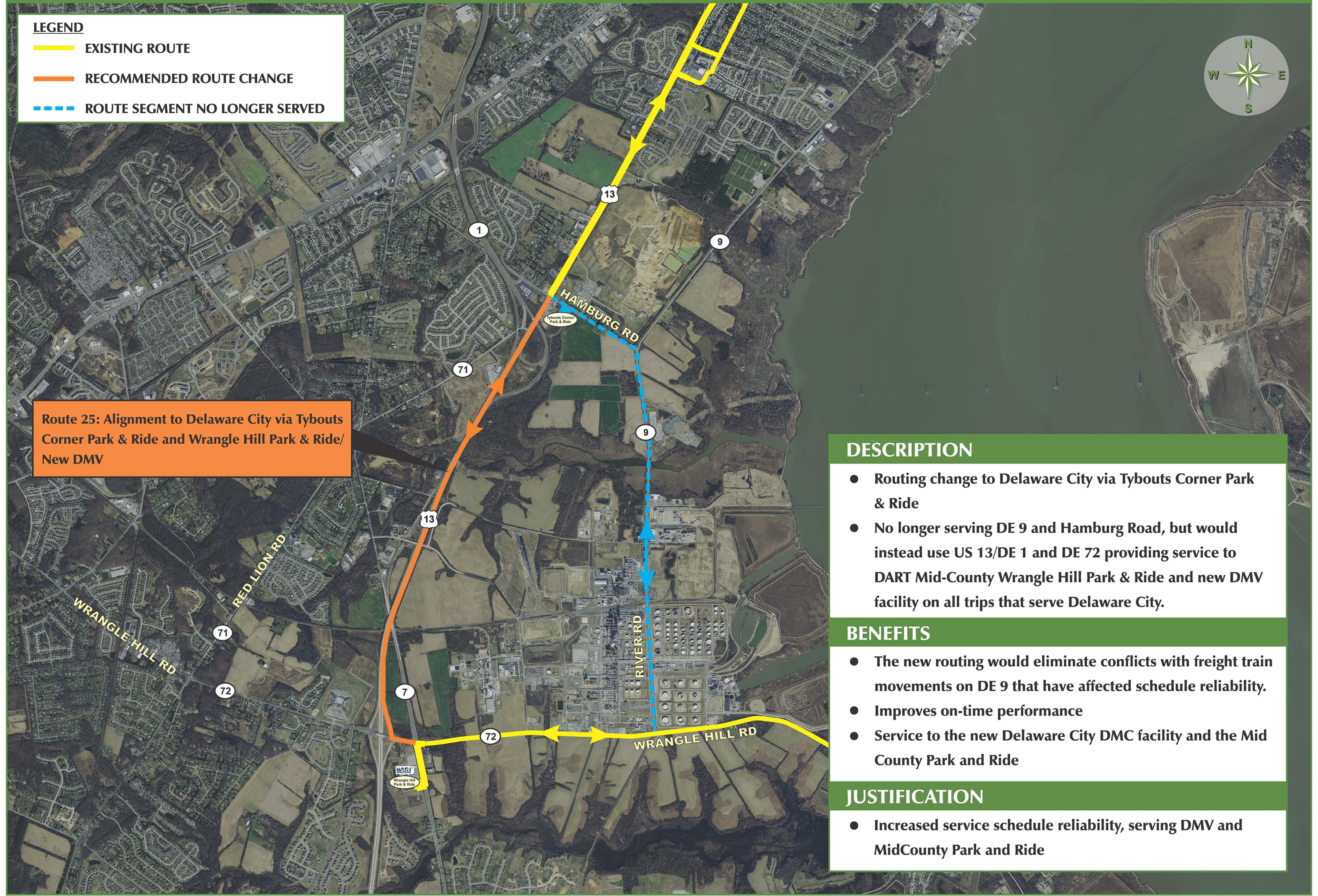
- Routing change to Delaware City via Tybouts Corner Park & Ride
- No longer serving DE 9 and Hamburg Road, but would instead use US 13/DE 1 and DE 72 providing service to DART Mid-County Wrangle Hill Park & Ride and new DMV facility on all trips that serve Delaware City.

BENEFITS

- The new routing would eliminate conflicts with freight train movements on DE 9 that have affected schedule reliability.
- Improves on-time performance
- Service to the new Delaware City DMC facility and the Mid County Park and Ride

JUSTIFICATION

- Increased service schedule reliability, serving DMV and MidCounty Park and Ride



LEGEND

- EXISTING ROUTE
- RECOMMENDED ROUTE CHANGE
- ROUTE SEGMENT NO LONGER SERVED



DESCRIPTION

- All trips would use Broom Street providing local service to A.I. DuPont Hospital and Nemours Clinic, discontinuing service along Augustine Cutoff.

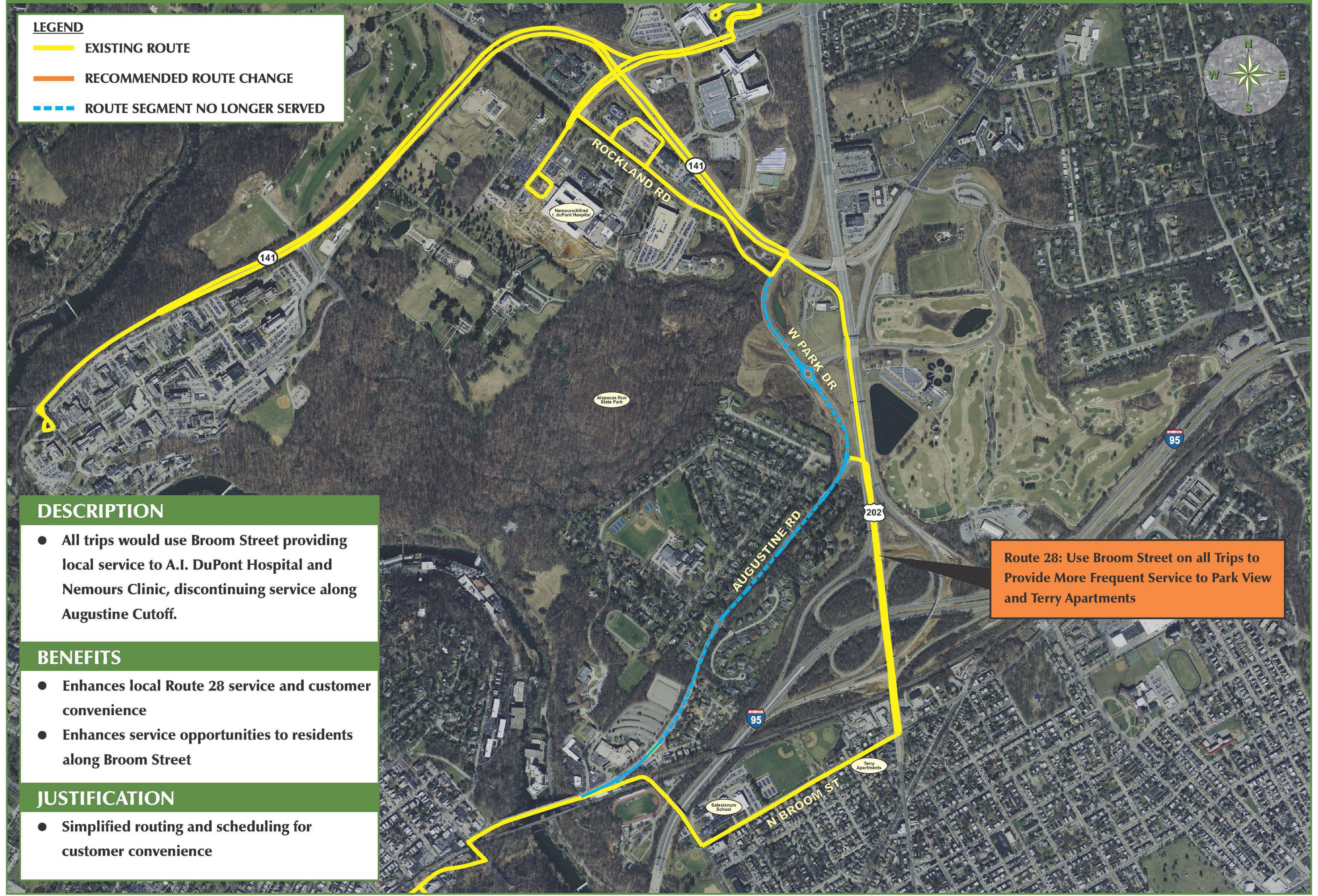
BENEFITS

- Enhances local Route 28 service and customer convenience
- Enhances service opportunities to residents along Broom Street

JUSTIFICATION

- Simplified routing and scheduling for customer convenience

Route 28: Use Broom Street on all Trips to Provide More Frequent Service to Park View and Terry Apartments



LEGEND

- EXISTING ROUTE
- RECOMMENDED ROUTE CHANGE
- - - ROUTE SEGMENT NO LONGER SERVED

Route 33: Sunday Service will go to Christiana Mall Only. Onward Connections with Route 40 to/from Wilmington



DESCRIPTION

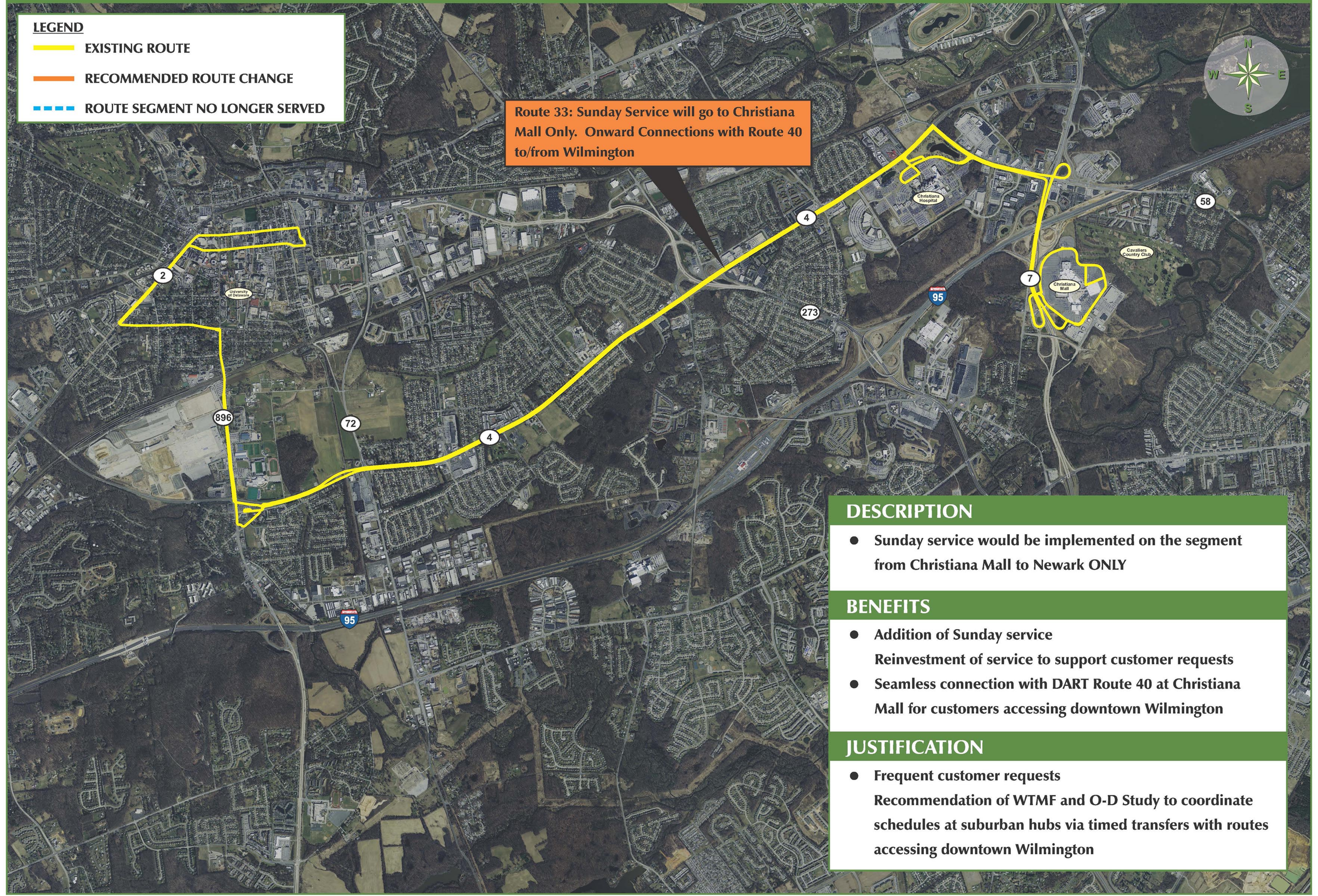
- Sunday service would be implemented on the segment from Christiana Mall to Newark ONLY

BENEFITS

- Addition of Sunday service
- Reinvestment of service to support customer requests
- Seamless connection with DART Route 40 at Christiana Mall for customers accessing downtown Wilmington

JUSTIFICATION

- Frequent customer requests
- Recommendation of WTMF and O-D Study to coordinate schedules at suburban hubs via timed transfers with routes accessing downtown Wilmington



DESCRIPTION

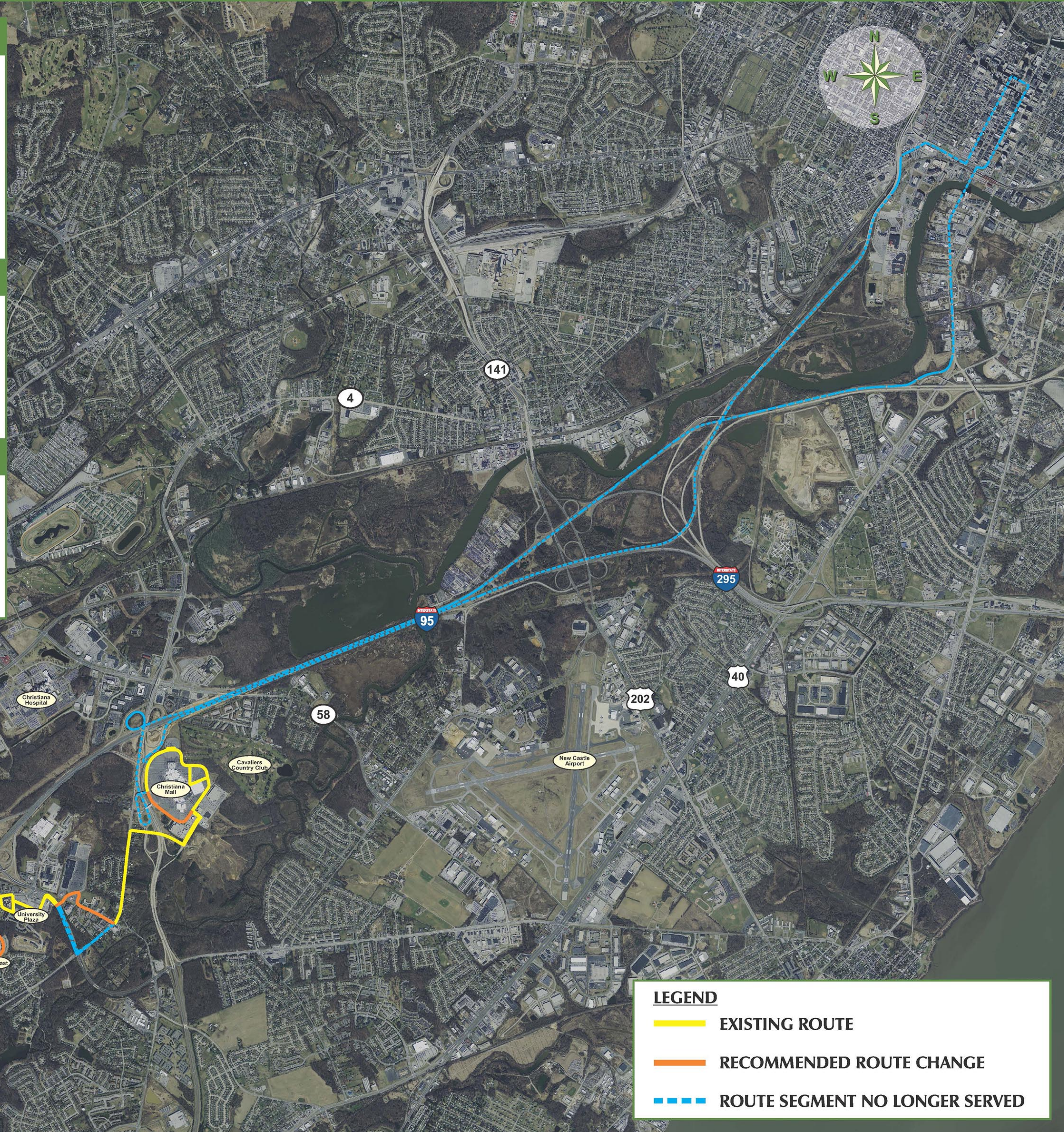
- All trips along Marrows Road would be replaced by Route 55
- Route 34 would now provide more direct service between Newark and Christiana, serving Comcast/Wakefield Drive, University Plaza, Old Main Street in downtown Christiana ending at Christiana Mall.
- Service to Wilmington by transferring to Route 33 or 40

BENEFITS

- Enhances service reliability
- Provides transit access between Christiana Mall, Old Christiana Main Street, to key destinations along SR 273 to Newark

JUSTIFICATION

- Recommendation of WTMF and O-D Study to improve efficiencies and maintain access to key destinations
- Suburban routes should truly be suburban routes, reducing extensions of route to Wilmington



Route 34: Direct Service Between Newark and Christiana

LEGEND

- EXISTING ROUTE
- RECOMMENDED ROUTE CHANGE
- ROUTE SEGMENT NO LONGER SERVED

LEGEND

- EXISTING ROUTE
- RECOMMENDED ROUTE CHANGE
- - - ROUTE SEGMENT NO LONGER SERVED

New Route 44: Would Convert Existing "Not In Service" Buses to Express Buses Between DART Mid-County Wrangle Hill Park & Ride and New DMV Facility to Christiana Mall



DESCRIPTION

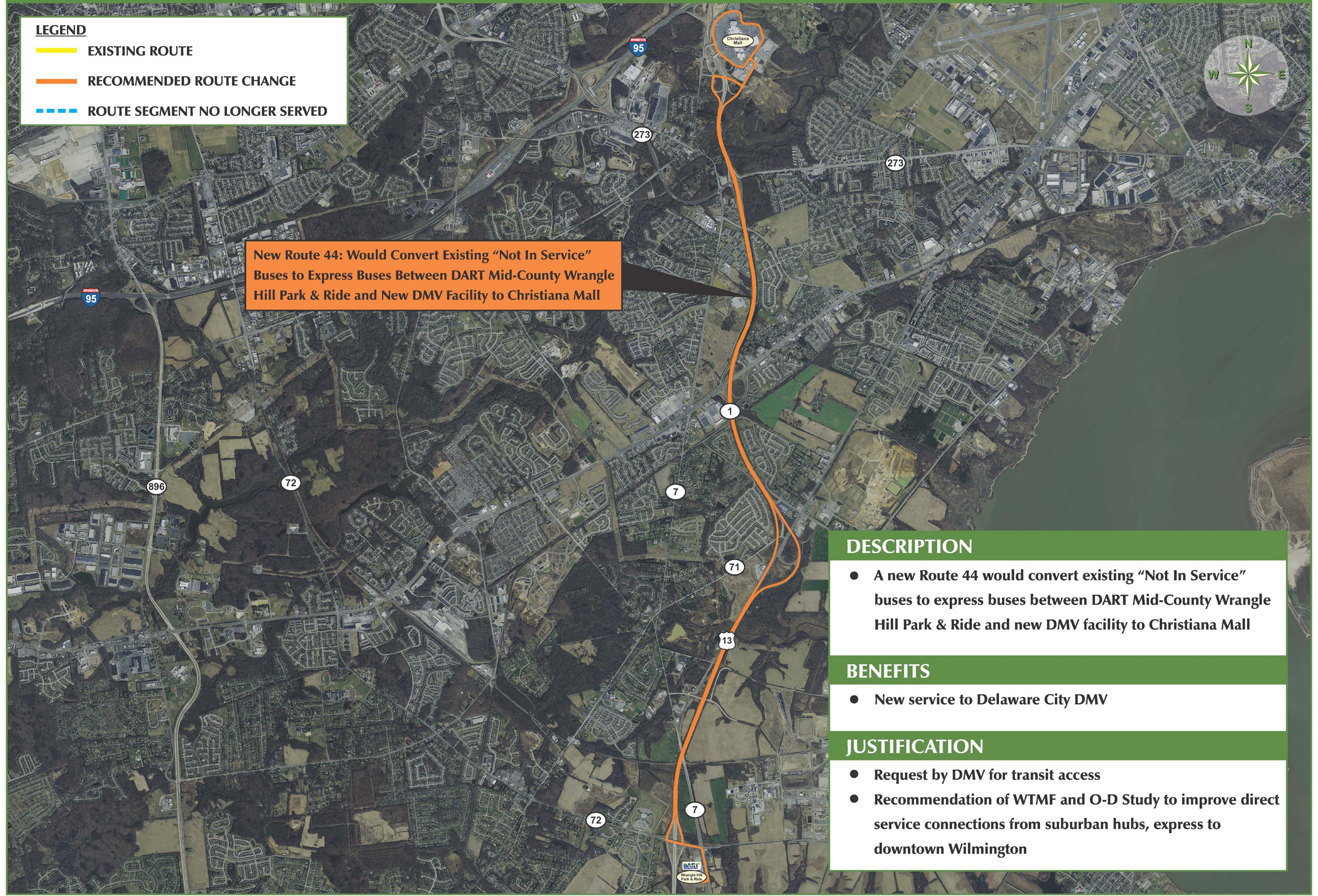
- A new Route 44 would convert existing "Not In Service" buses to express buses between DART Mid-County Wrangle Hill Park & Ride and new DMV facility to Christiana Mall

BENEFITS

- New service to Delaware City DMV

JUSTIFICATION

- Request by DMV for transit access
- Recommendation of WTMF and O-D Study to improve direct service connections from suburban hubs, express to downtown Wilmington



New Route 46: Would Replace Western Segment of Existing Route 55 to Improve Service Reliability and Scheduling Efficiencies

LEGEND

- EXISTING ROUTE
- RECOMMENDED ROUTE CHANGE
- - - ROUTE SEGMENT NO LONGER SERVED



DESCRIPTION

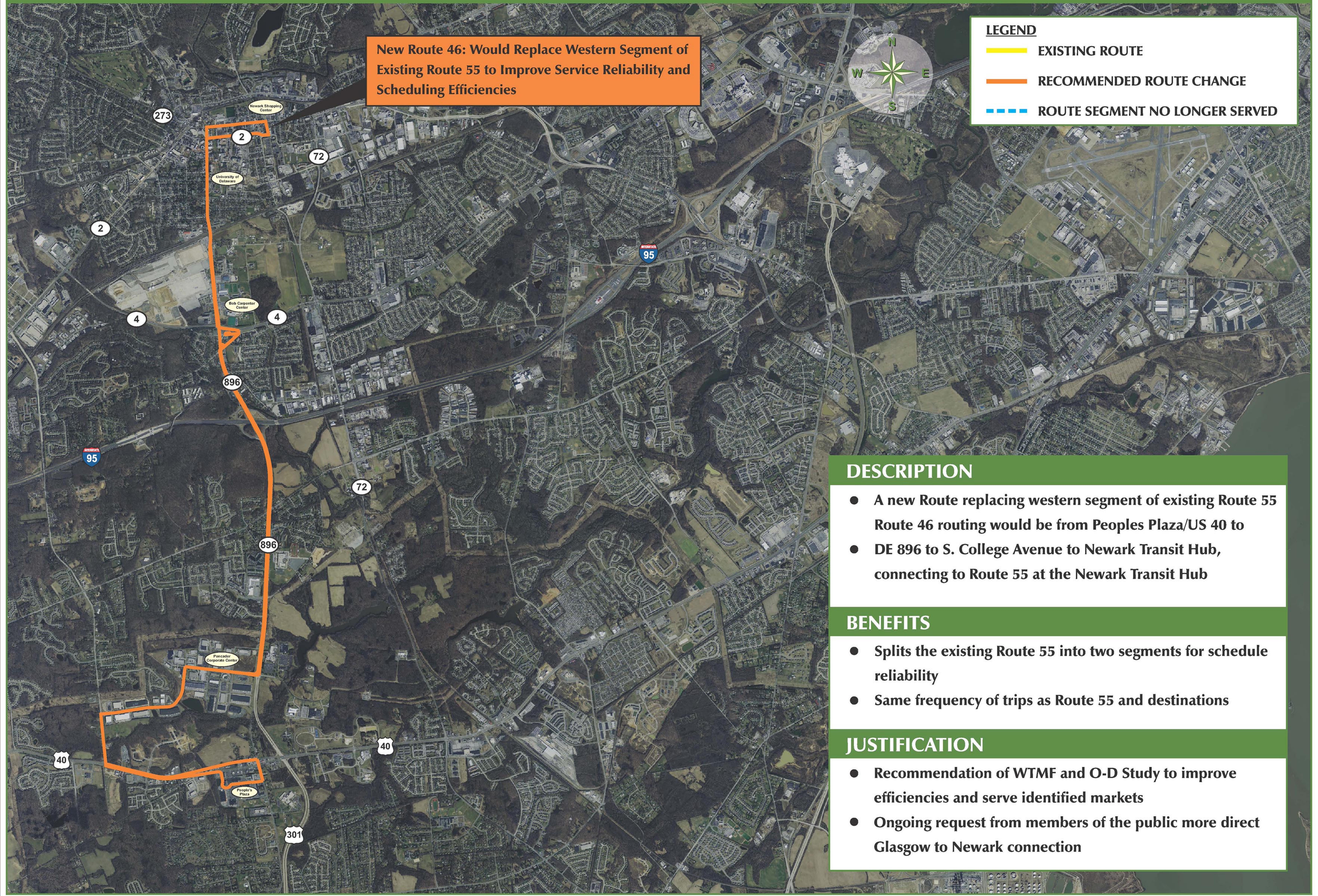
- A new Route replacing western segment of existing Route 55
- Route 46 routing would be from Peoples Plaza/US 40 to DE 896 to S. College Avenue to Newark Transit Hub, connecting to Route 55 at the Newark Transit Hub

BENEFITS

- Splits the existing Route 55 into two segments for schedule reliability
- Same frequency of trips as Route 55 and destinations

JUSTIFICATION

- Recommendation of WTMF and O-D Study to improve efficiencies and serve identified markets
- Ongoing request from members of the public more direct Glasgow to Newark connection



LEGEND

- EXISTING ROUTE
- RECOMMENDED ROUTE CHANGE
- ROUTE SEGMENT NO LONGER SERVED

Route 55: Would Extend Weekday Service to 9:30 PM and Add New Saturday Service from 6:30 AM to 8:00 PM to Marrows Road, White Chapel, and Kimberton Communities

DESCRIPTION

- Adding new service to serve Marrows Road replacing Route 34 and no longer turn around in White Chapel community.
- Routing would be Christiana Mall to Old Baltimore Pike, Library Avenue to Chestnut Hill Road to Marrows Road to Wyoming Drive back to Library Avenue

BENEFITS

- To Marrows Road, White Chapel, Kimberton communities, extended weekday service to 9:30 PM
- New Saturday service from 6:30 AM to 8:00 PM to Marrow Road, White Chapel, Kimberton communities

JUSTIFICATION

- Direct request from White Chapel/Whispering Pines (Kimberton) Community and Legislative request to re-appropriate bus alignments within this area but still provide transit access/services

