

# Village of Marshallton

## Walkable Community Workshop



June 9, 2011

Non-motorized Transportation Working Group  
August 2, 2011



## Marshallton Project



- \* Approached by DelDOT in late 2010
  - \* High vehicle speeds, heavy volume, limited road space
  - \* Out of quick fixes/ideas
  - \* Comprehensive traffic circulation study needed
  
- \* Our Approach
  - \* Walkable Community Workshop
  - \* Traffic Circulation Study



Bing Maps, 2011

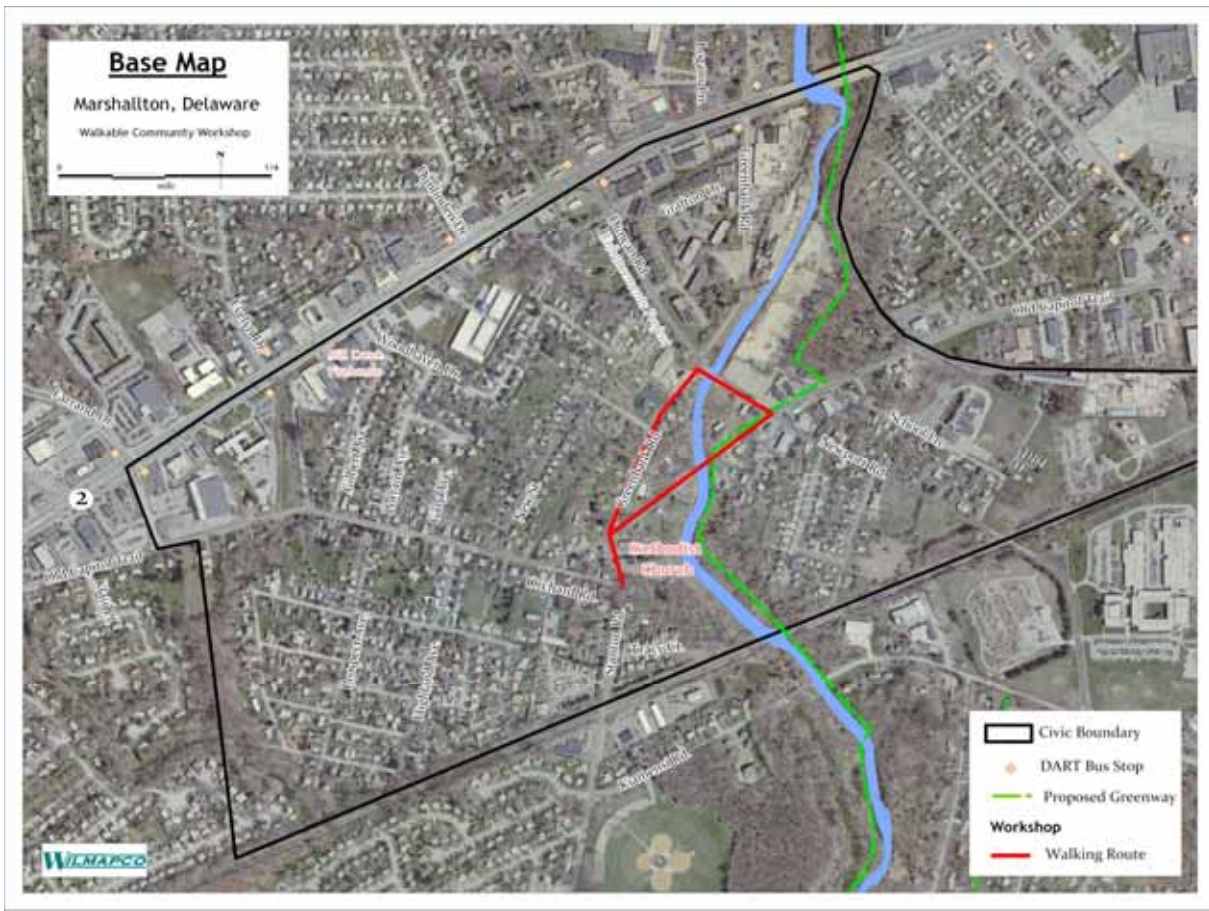
# Traffic Circulation Study

- \* Set to begin this month
- \* Build computer model of area traffic flow (including SR 2)
  - \* Study tweaks to signalization, addition of stop signs, etc.
- \* Generate *innovative* traffic-calming ideas
- \* WCW in anticipation of this larger process

# Workshop Overview

- \* Background Presentation
- \* Walkability Presentation
- \* The Walk (real and virtual)
- \* Mapping Exercise
- \* Report Generation





# Key Walkability Issues

- \* Connectivity
  - \* Parks and activity centers
- \* Greenway opportunity (Lower Red Clay Valley)
- \* Safety (crossing the road)
- \* Busted/missing infrastructure



Bing Maps, 2011

# Connectivity



# Greenway Opportunity





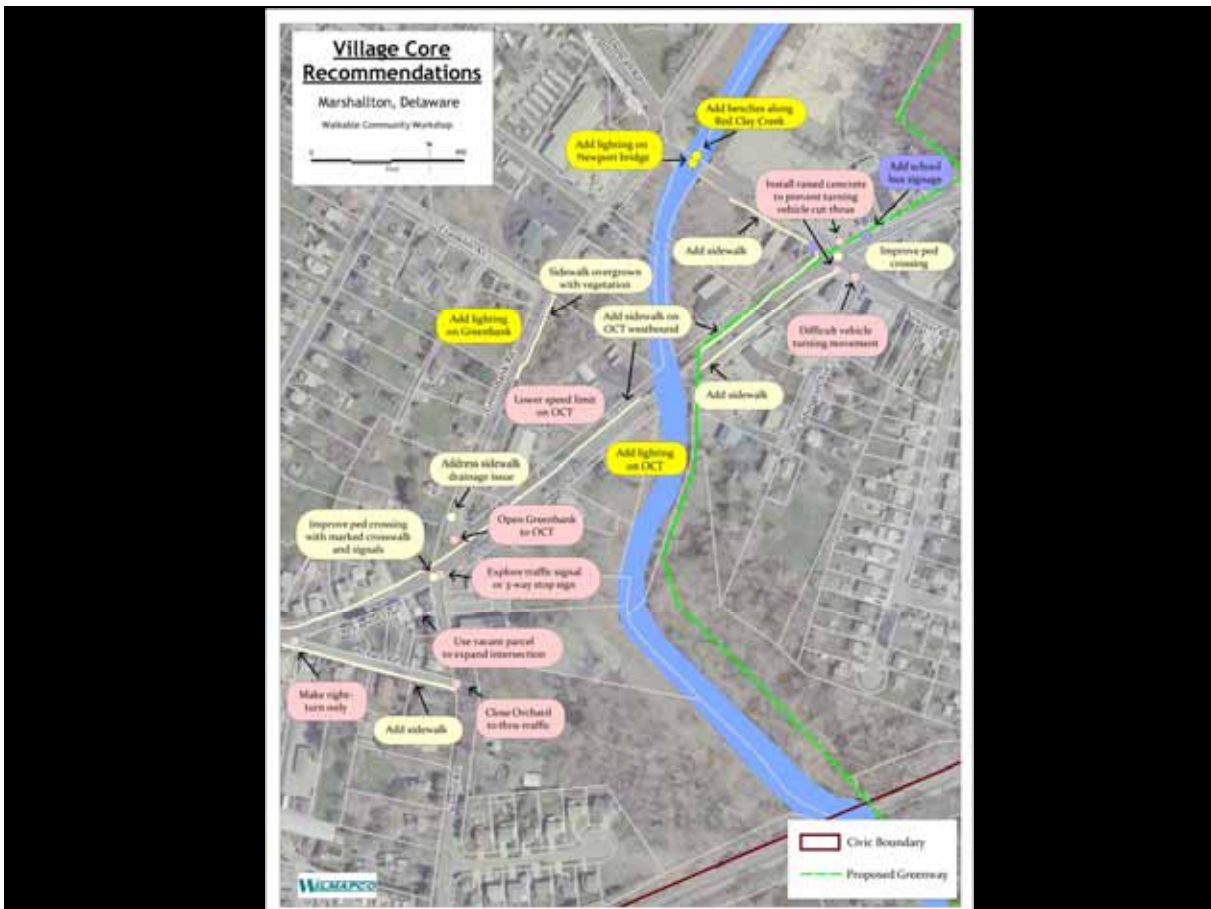
# Safety



# Broken Infrastructure



# Mapping Exercise





# Next Steps

- \* Proceed with short-term recommendations
- \* Circulation Study to begin this month





[wilmingtonco.org/walkable](http://wilmingtonco.org/walkable)

