

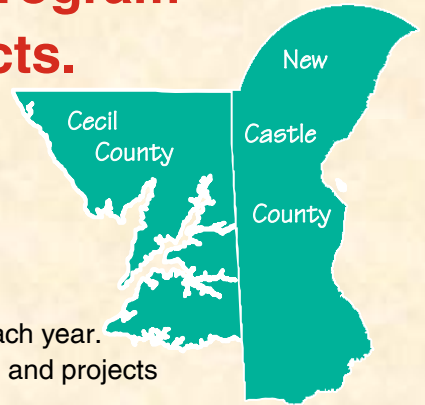
HAVE A SAY IN HOW YOUR TRANSPORTATION DOLLARS ARE SPENT

WILMAPCO's Transportation Improvement Program (TIP) funds the region's transportation projects.

The TIP represents the first 4 years of your region's long-range plan, and prioritizes and documents planned projects including roads, buses, rail, bicycle and pedestrian improvements.

How can you participate?

- Stay informed—sign up for our monthly e-news and quarterly newsletter by visiting www.wilmapco.org or calling 302.737.6205
- Attend public meetings or invite us to speak to your group. Two TIP workshops are held each year. In addition, WILMAPCO, DelDOT and MDOT host many public events on individual plans and projects
- Call us or E-mail comments to wilmapco@wilmapco.org



WHAT'S NEW: Draft TIP is available for comment from January 22—February 28, 2018

NEXT PUBLIC WORKSHOP: FEBRUARY 26, 2018

Visit the Newark Free Library between 4—7 p.m.
750 Library Ave, Newark, DE 19711

- Contains \$2.2 billion in road, transit, rail, multimodal & bicycle/pedestrian projects, 6% more than the TIP approved in September 2017
- Proposes four new projects:
 - Expand I-295 northbound from SR 141—US 13
 - Improve Otts Chapel Road / Welsh Track Church Road intersection
 - Relocate Shallcross Lake Road between Graylag Road and Boyds Corner Road
 - Improve multimodal travel on SR 9 from Landers Lane—A Street
- Transit improvement highlights—
 - New rail and bus transit centers in Newark, Claymont and Wilmington
 - Bus transit park & rides near Christiana Mall and Middletown
- Road improvement highlights—
 - Bridge preservation and safety projects in Cecil and New Castle counties
 - Highway projects including I-295 and US 301
 - Multimodal projects including US 40, Elkton Road, southern New Castle County roads, and City of Wilmington streets
- Bicycle and pedestrian highlights—
 - New Castle-Wilmington Jack Markell Trail completion
 - Pedestrian improvements on US 13 and US 40

WILMAPCO

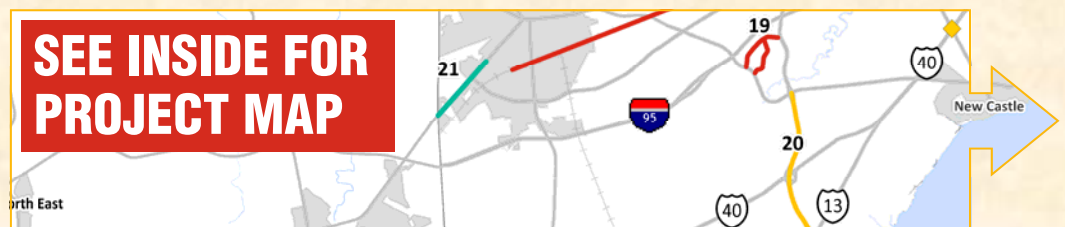
WILMINGTON AREA PLANNING COUNCIL

850 Library Avenue, Newark, DE

302-737-6205 • wilmapco@wilmapco.org

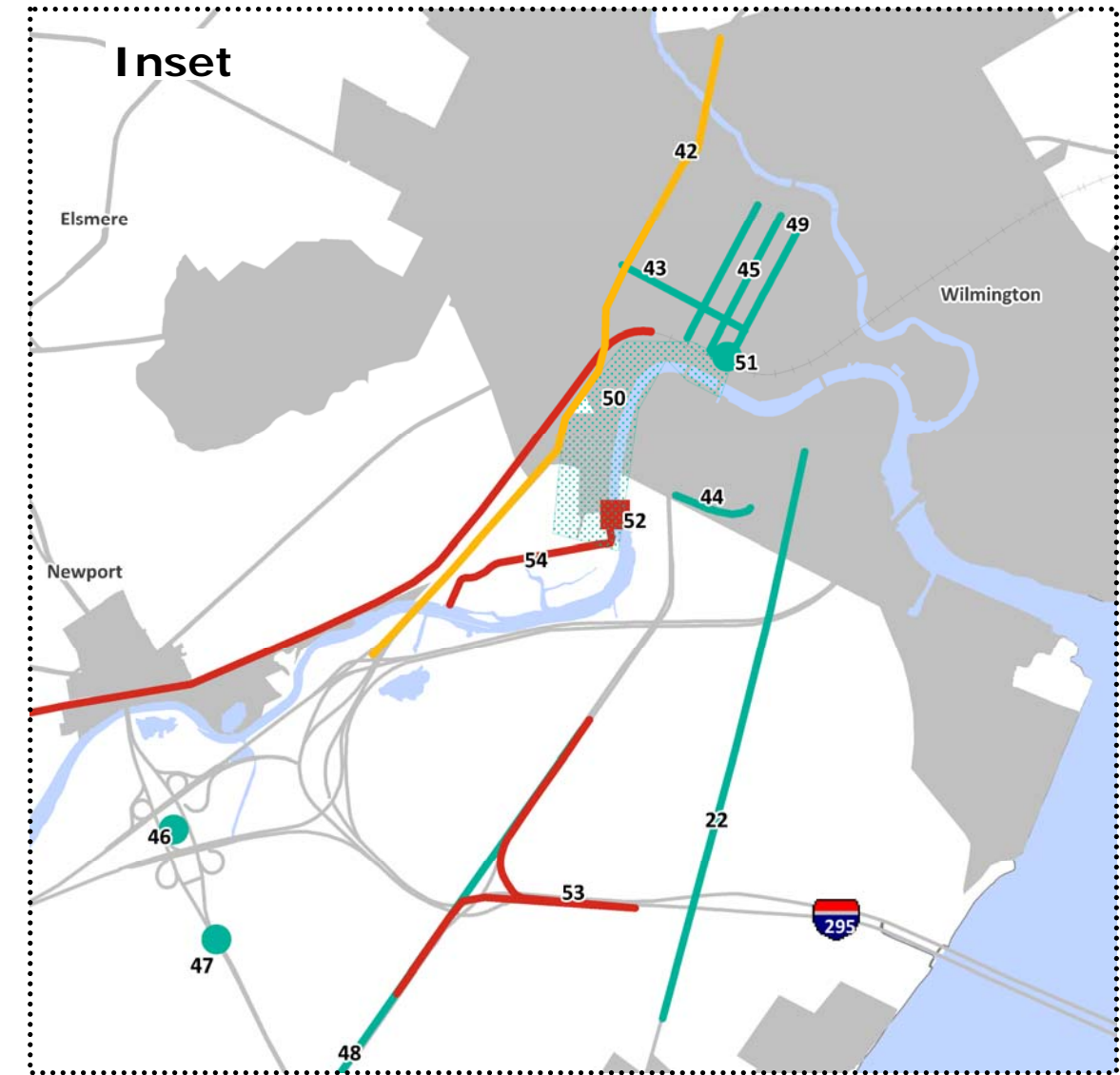
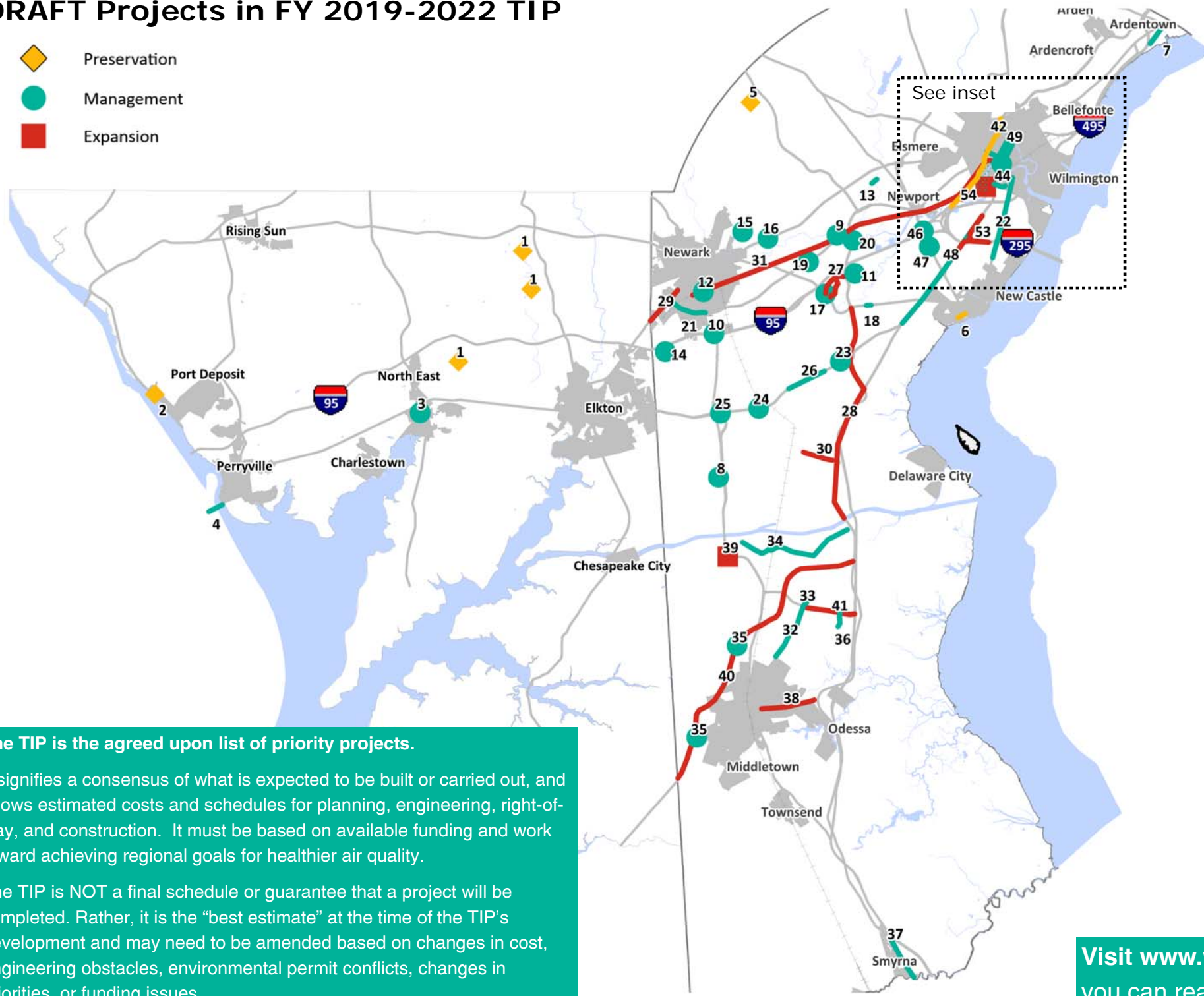
WWW.WILMAPCO.ORG/TIP

SEE INSIDE FOR
PROJECT MAP



DRAFT Projects in FY 2019-2022 TIP

- ◆ Preservation
- Management
- Expansion



The TIP is the agreed upon list of priority projects.

It signifies a consensus of what is expected to be built or carried out, and shows estimated costs and schedules for planning, engineering, right-of-way, and construction. It must be based on available funding and work toward achieving regional goals for healthier air quality.

The TIP is NOT a final schedule or guarantee that a project will be completed. Rather, it is the “best estimate” at the time of the TIP’s development and may need to be amended based on changes in cost, engineering obstacles, environmental permit conflicts, changes in priorities, or funding issues.

- Example Projects (areawide projects, not mapped)**
- Road and bridge preservation
 - Safety
 - Transit Operating and Capital Funds
 - Bicycle and Pedestrian Improvements and Recreational Trails Program
 - Municipal Street Aid and Community Transportation Funds
 - Intersection Improvements

Visit www.wilmapco.org/tip or call 302-737-6205 to learn more. In the TIP document, you can read all project descriptions and learn funding for each year and phase.

ID	Project	ID	Project	ID	Project	ID	Project	ID	Project
1	Cecil County Bridge Painting	12	Newark Train Station	23	US 40 / SR 7 Intersection	34	Lorewood Grove Rd	45	King & Orange Sts: MLK - 13th
2	MD 222 Bridge over Rock Run	13	Old Capital Trail: Newport Rd - Stanton Rd	24	US 40 / SR 72 Interchange	35	Middletown Park and Ride	46	SR 141/I-95 Interchange
3	MD 272 Bridge over Amtrak	14	Ottis Chapel Rd / Welsh Tract Church Rd	25	US 40 / SR 896 Interchange	36	Shallcross Lake Rd: Graylag Rd - Boyds Corner Rd	47	SR 141: I-95 - Jay Dr
4	Susquehanna River Bridge Replacement	15	Possum Park & Old Possum Park Intersection	26	US 40: Salem Church Rd - Walther Rd	37	US 13: Duck Creek - SR 1	48	US 13: US 40 - Memorial Dr Pedestrian
5	Little Baltimore Pike	16	SR 2 / Red Mill Road	27	Road A/SR 7	38	SR 299: SR 1 to Catherine Street	49	Walnut St: Front to 13th St.
6	SR 9, River Road Flood Remediation	17	SR 273 / Chapman Rd	28	SR 1: Roth Bridge to SR 273	39	SR 896 / Bethel Church Interchange	50	Wilmington Riverfront Program
7	Claymont Train Station	18	SR 273: Appleby Rd - Airport Rd	29	SR 2, Elkton Road: MD Line to Casho Mill Rd	40	US 301: Maryland Line to SR 1	51	Wilmington Transit Center
8	Denny Rd / Lexington Parkway	19	SR 4 / Harmony Rd	30	SR 72: McCoy Road - SR 71	41	Boys Corner Rd: Cedar Lane to US 13	52	Christina River Bridge
9	Fairplay Train Station	20	SR 4 / SR 7	31	Third Rail Track Expansion, Newark - Wilmington	42	I-95: I-495 - North of Brandywine River	53	I-295 Improvements
10	I-95 & SR 896 Interchange	21	SR 4: SR 2 - SR 896	32	Cedar Ln: Marl Pit Rd - Boyds Corner Rd	43	4th St: Walnut St - I-95	54	NCC Industrial Track Greenway, Phase III
11	NCC Transit Center	22	SR 9: Landers Ln - A St	33	Jamison Corner Rd: Relocated to Boyds Corner Rd	44	Garasches Lane		

WILMAPCO TIP QUICK GUIDE

The TIP is prepared by WILMAPCO in cooperation with the public and local transportation and land use agencies. Broad input is crucial because the TIP identifies regional priorities for how our federal, state and local transportation funding is spent.

How is the TIP Funded?

All federally funded projects must be included in the TIP and most federal funds require matching funds. Much of this revenue is from user fees such as the gas tax. State and local matches are also supplemented by borrowing, state and local taxes, and private funding.

\$1,093 million
Delaware/Maryland
50%

Delaware/Maryland funds from fuel taxes, tolls, motor vehicle and other fees, & bonds

\$1,017 million
federal
46%

Federal Highway Administration (FHWA) and Federal Transit Administration (FTA)

Other funding comes from local funds, developer contributions, toll bonds, and grants

\$95 million other 4%

Where are the projects?

While projects are located throughout the region, Transportation Investment Areas define appropriate projects based on location, and direct the greatest resources toward serving the most population. WILMAPCO uses a prioritization process to identify benefits by location.

Cecil County 4%

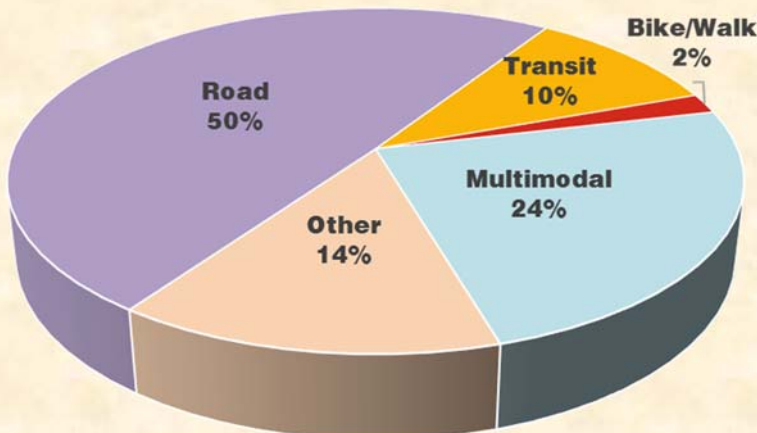
New Castle County
38%

Delaware Statewide
58%

The TIP document is grouped by Cecil County, New Castle County, and Delaware Statewide. Delaware Statewide contains funding for all counties in Delaware and projects do not specify amounts for New Castle County, for example Engineering and Contingency

What Types of Projects are in the TIP?

Projects by Mode



Road—Exclusively for roads and highways

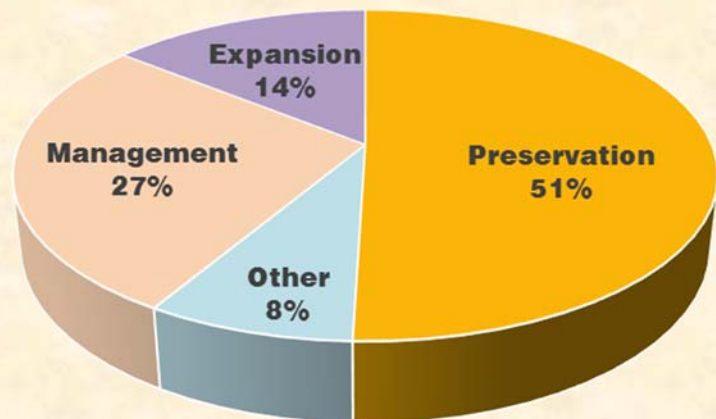
Transit—Bus, passenger rail or paratransit

Bicycle/walk—Pedestrian and cycling transportation

Multimodal—Serves cars, transit, freight, walking and bicycles in a balanced way

Other—Includes aeronautics, port, contingency funds, environmental, equipment, planning, etc.

Projects by Category



Preservation—Maintain an existing facility or service

Management—Enhance existing facility or service to sustain an acceptable level of service

Expansion—New/expanded services and infrastructure

Other—Engineering & contingency, education & training, environmental program and planning