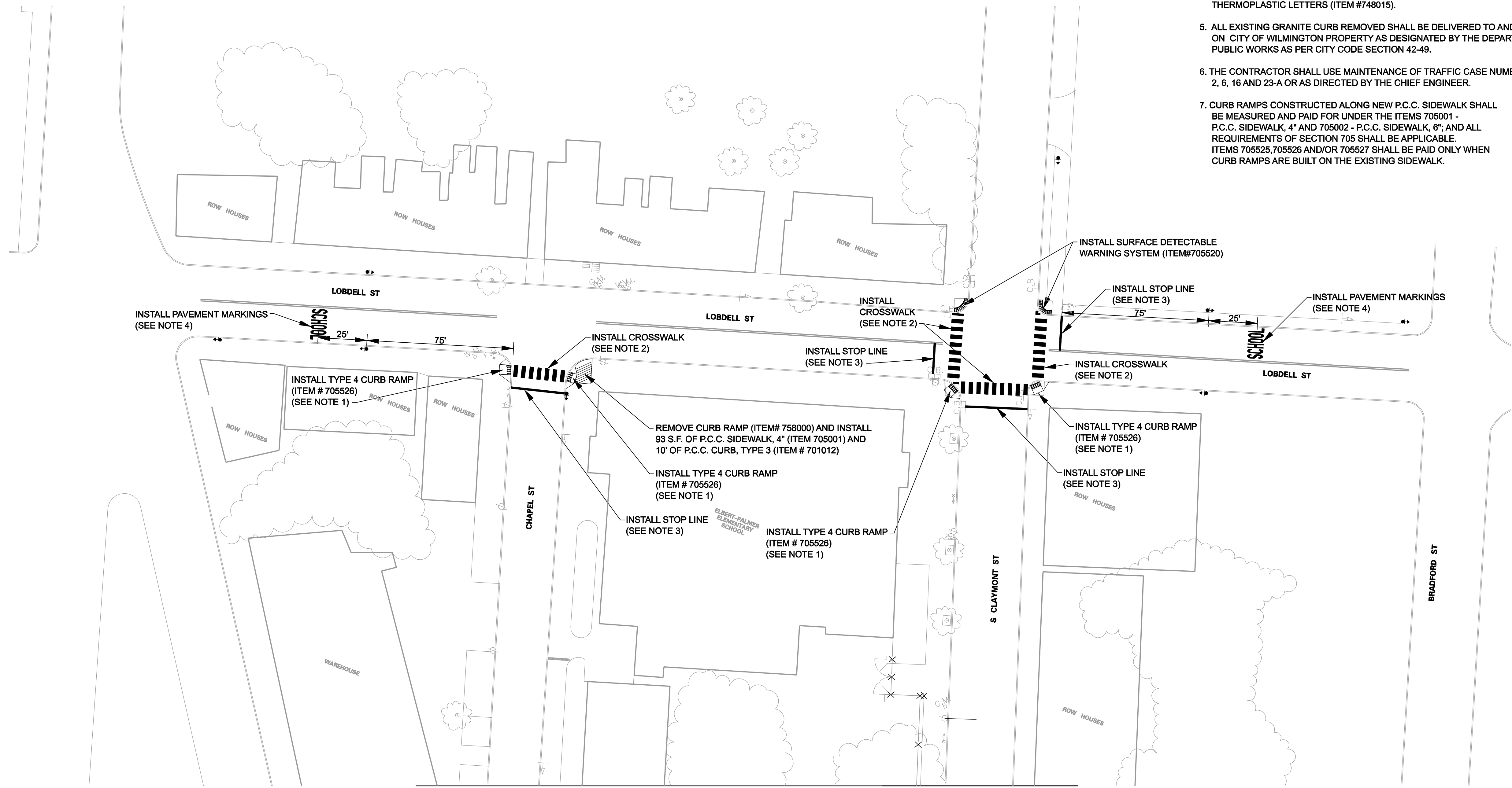


CONSTRUCTION DETAILS:

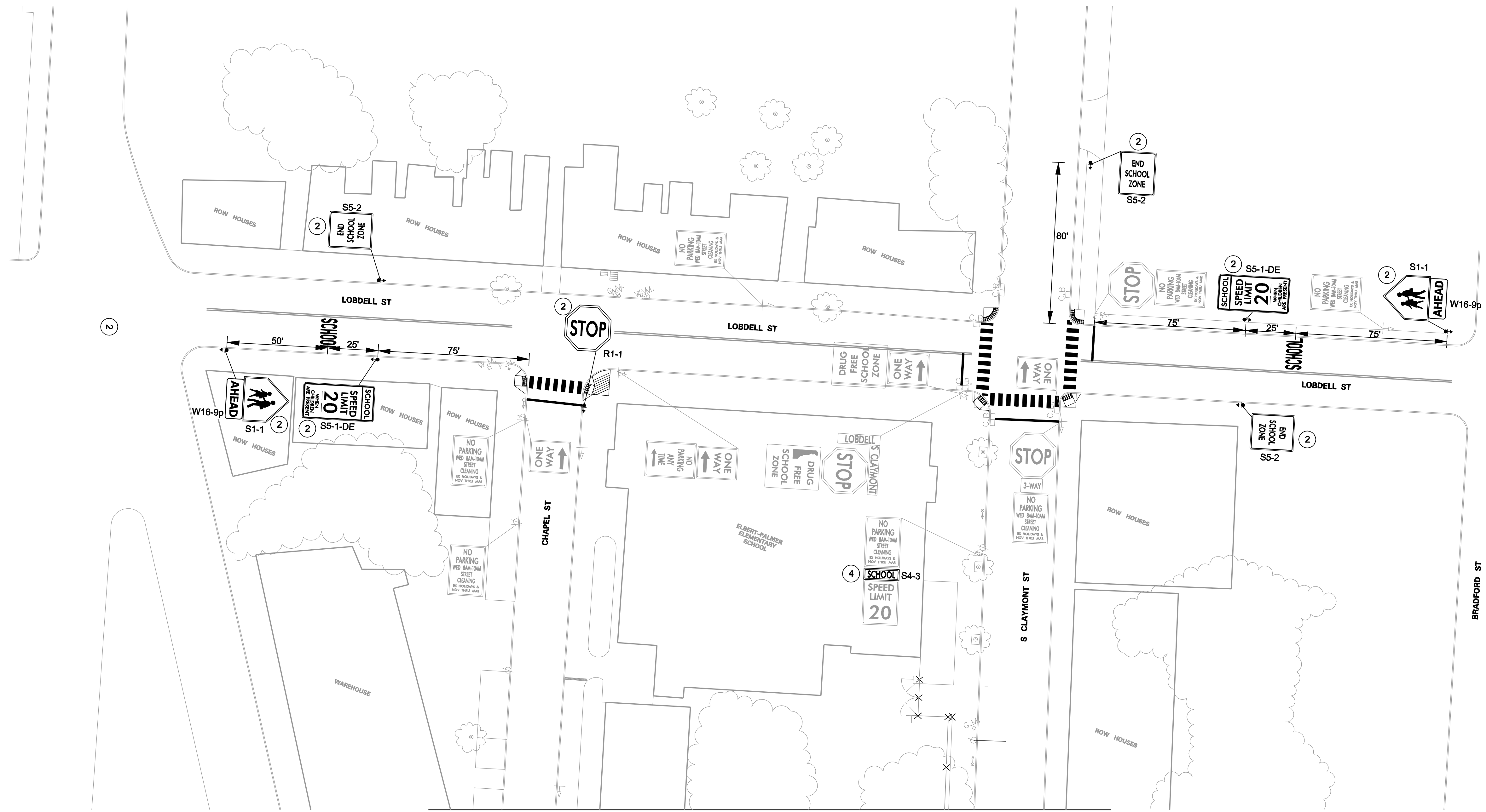
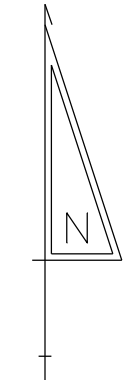
1. INSTALLATION OF CURB RAMPS TYPE 1,2,3 AND 4 SHALL INCLUDE DETECTABLE WARNING SYSTEMS (ITEM#705520).
2. CROSSWALK MARKINGS SHALL BE 'PIANO KEY' TYPE, 6 FEET WIDE, APPLIED USING WHITE ALKYD-THERMOPLASTIC PERMANENT STRIPING, 24" STRIPES AND 24" GAPS (ITEM # 748027)
3. STOP LINE MARKINGS SHALL BE APPLIED USING WHITE ALKYD-THERMOPLASTIC PERMANENT PAVEMENT STRIPING, 16" WIDE. (ITEM # 748016)
4. SCHOOL PAVEMENT MARKINGS SHALL BE APPLIED USING WHITE ALKYD-THERMOPLASTIC LETTERS (ITEM #748015).
5. ALL EXISTING GRANITE CURB REMOVED SHALL BE DELIVERED TO AND STORED ON CITY OF WILMINGTON PROPERTY AS DESIGNATED BY THE DEPARTMENT OF PUBLIC WORKS AS PER CITY CODE SECTION 42-49.
6. THE CONTRACTOR SHALL USE MAINTENANCE OF TRAFFIC CASE NUMBERS 2, 6, 16 AND 23-A OR AS DIRECTED BY THE CHIEF ENGINEER.
7. CURB RAMPS CONSTRUCTED ALONG NEW P.C.C. SIDEWALK SHALL BE MEASURED AND PAID FOR UNDER THE ITEMS 705001 - P.C.C. SIDEWALK, 4" AND 705002 - P.C.C. SIDEWALK, 6"; AND ALL REQUIREMENTS OF SECTION 705 SHALL BE APPLICABLE. ITEMS 705525,705526 AND/OR 705527 SHALL BE PAID ONLY WHEN CURB RAMPS ARE BUILT ON THE EXISTING SIDEWALK.



**MATCHLINE
SEE SHEET No. 2**

LEGEND

- NEW 4" P.C.C. SIDEWALK
- NEW TOP SOIL AND GRASS



MATCHLINE
SEE SHEET No. 4

GENERAL NOTES:

1. ALL SIGN REMOVAL/INSTALLATION SHALL BE PERFORMED BY DELDOT SIGN SHOP.
2. ALL EXISTING SIGNS ARE TO REMAIN UNLESS OTHERWISE NOTED.
3. ALL SCHOOL WARNING SIGNS SHALL BE FLUORESCENT YELLOW-GREEN IN COLOR AS DESCRIBED IN THE DELAWARE MUTCD, PART 7.

LEGEND

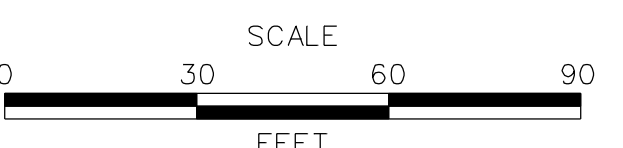
- EXISTING SIGN LOCATION
- PROPOSED SIGN LOCATION

CONSTRUCTION DETAILS:

- ① REMOVE EXISTING SIGN.
- ② INSTALL NEW SIGN ON 2" SQUARE TUBULAR STEEL SUPPORT(S).
- ③ RELOCATE EXISTING SIGN(S) ON NEW 2" SQUARE TUBULAR STEEL SUPPORT.
- ④ REMOVE EXISTING SIGN AND REPLACE WITH PROPOSED SIGN



ADDENDUMS / REVISIONS



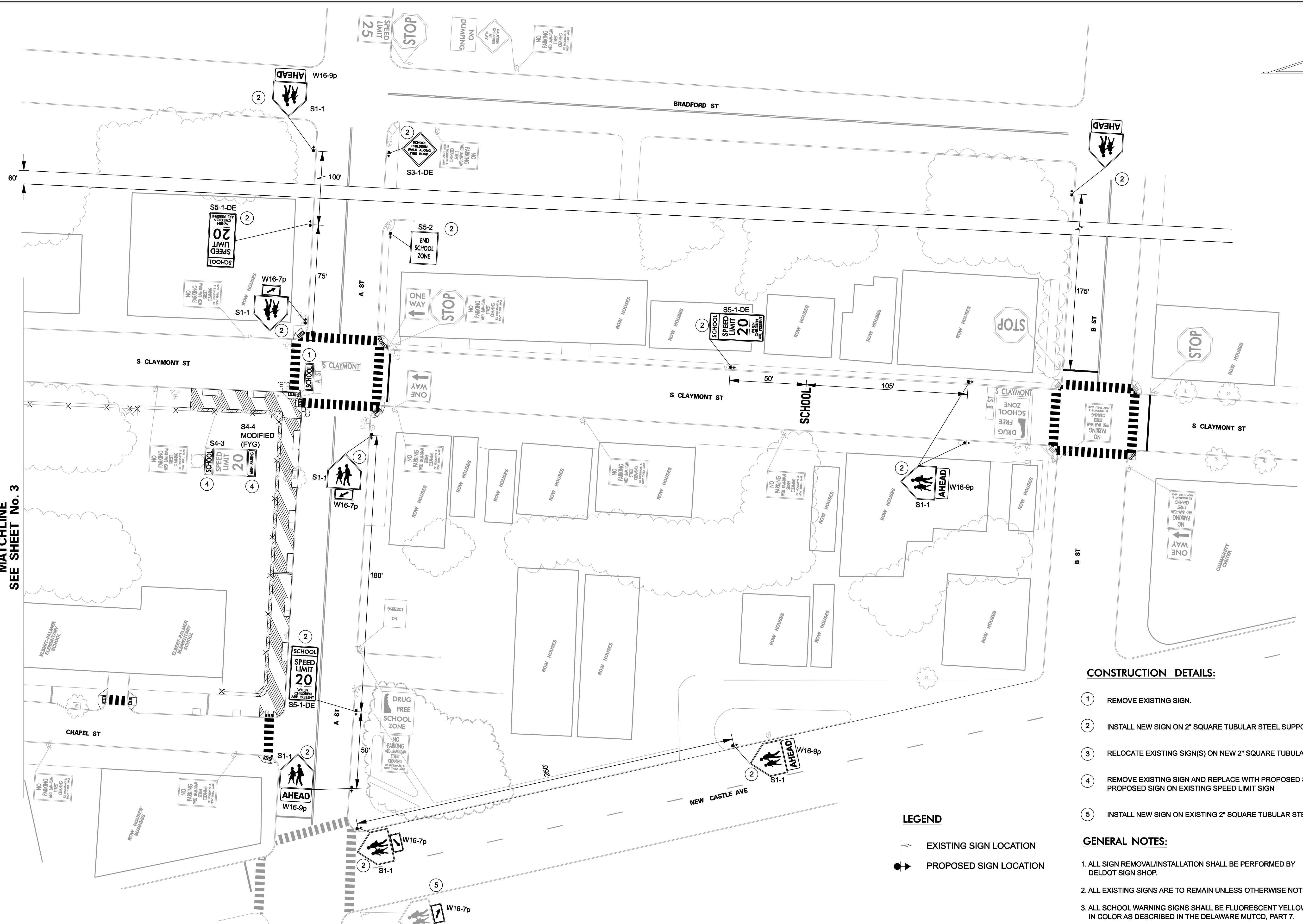
**CITY OF WILMINGTON
SAFE ROUTES TO SCHOOL
NEW CASTLE COUNTY**

CONTRACT	FAP NO.
COUNTY	DESIGNED BY: K. PERMISQHN
NEW CASTLE	CHECKED BY: D. McLEAN

**ELBERT-PALMER ELEMENTARY SCHOOL
SIGNING PLAN**

SHEET NO.	3
TOTAL SHTS.	5

MATCHLINE
SEE SHEET No. 3



CONSTRUCTION DETAILS:

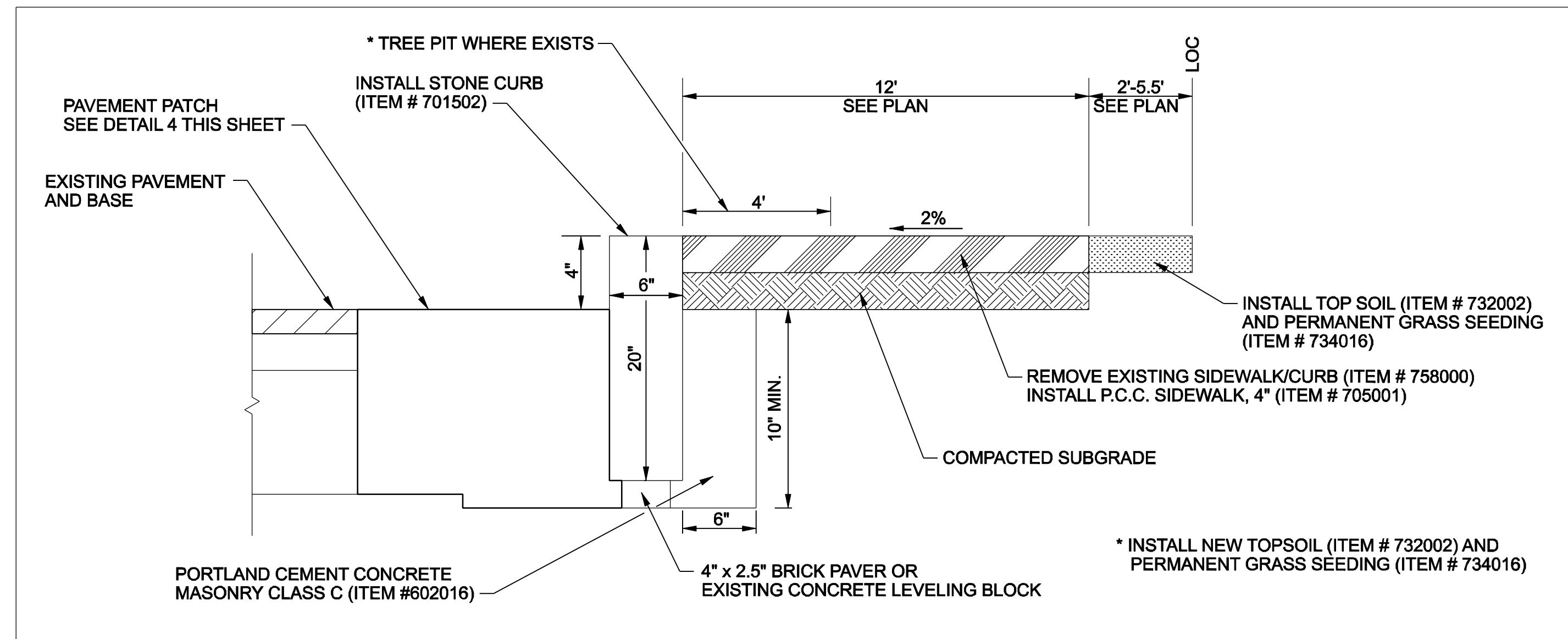
- ① REMOVE EXISTING SIGN.
- ② INSTALL NEW SIGN ON 2" SQUARE TUBULAR STEEL SUPPORT(S).
- ③ RELOCATE EXISTING SIGN(S) ON NEW 2" SQUARE TUBULAR STEEL SUPPORT.
- ④ REMOVE EXISTING SIGN AND REPLACE WITH PROPOSED SIGN. POP RIVET PROPOSED SIGN ON EXISTING SPEED LIMIT SIGN
- ⑤ INSTALL NEW SIGN ON EXISTING 2" SQUARE TUBULAR STEEL SUPPORT.

GENERAL NOTES:

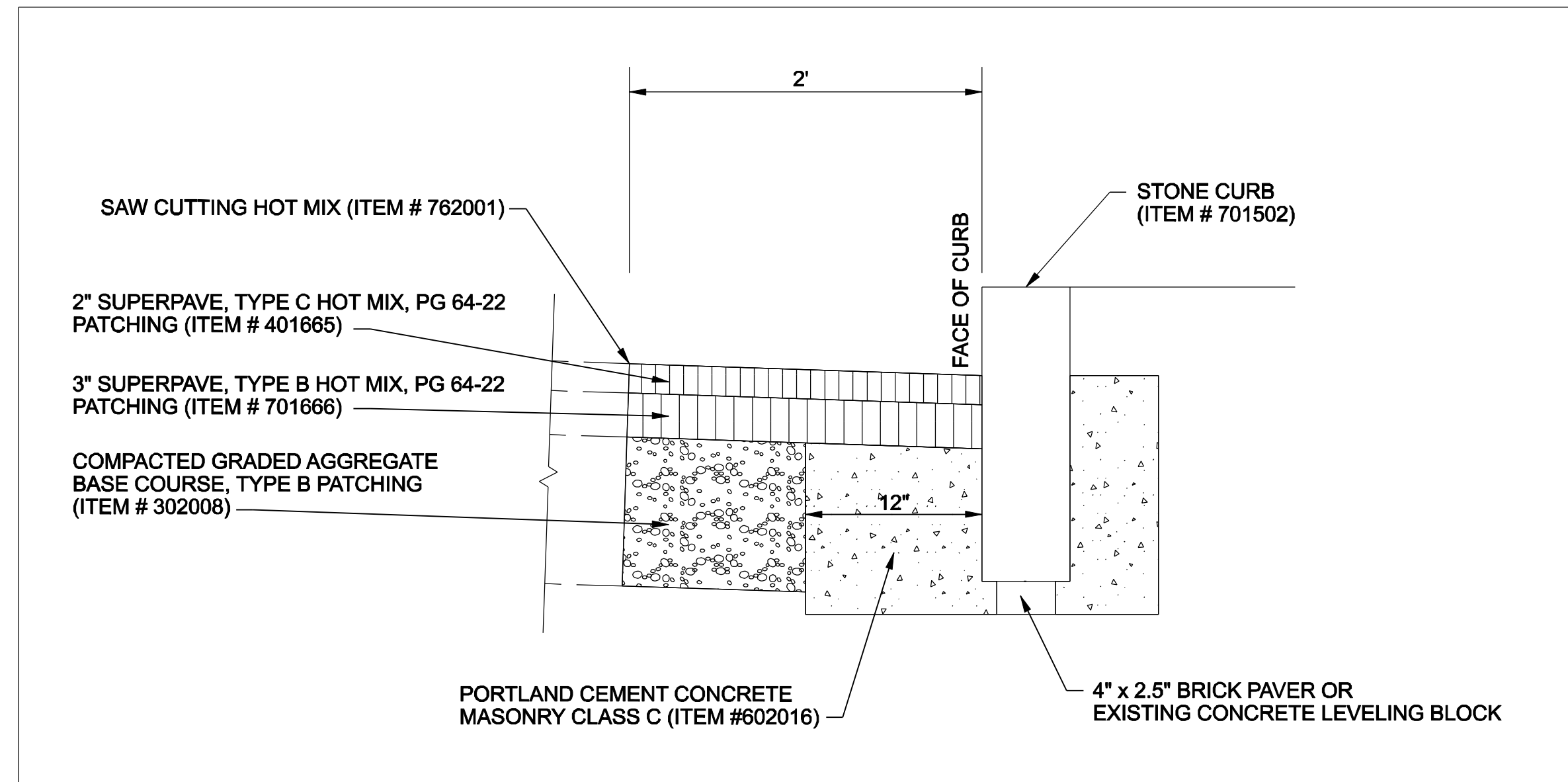
- 1. ALL SIGN REMOVAL/INSTALLATION SHALL BE PERFORMED BY DELDOT SIGN SHOP.
- 2. ALL EXISTING SIGNS ARE TO REMAIN UNLESS OTHERWISE NOTED.
- 3. ALL SCHOOL WARNING SIGNS SHALL BE FLUORESCENT YELLOW-GREEN IN COLOR AS DESCRIBED IN THE DELAWARE MUTCD, PART 7.

LEGEND

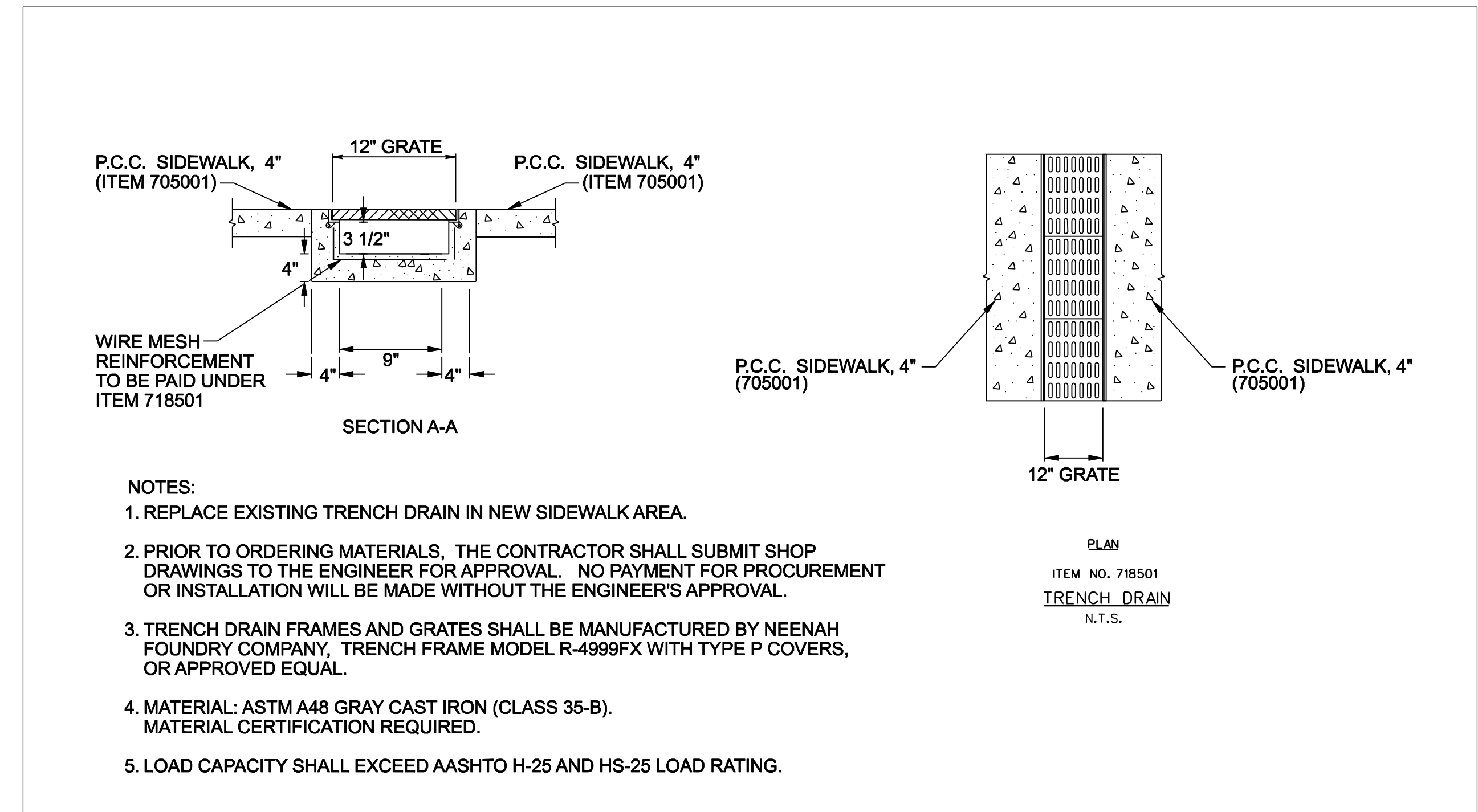
- ◻ EXISTING SIGN LOCATION
- PROPOSED SIGN LOCATION



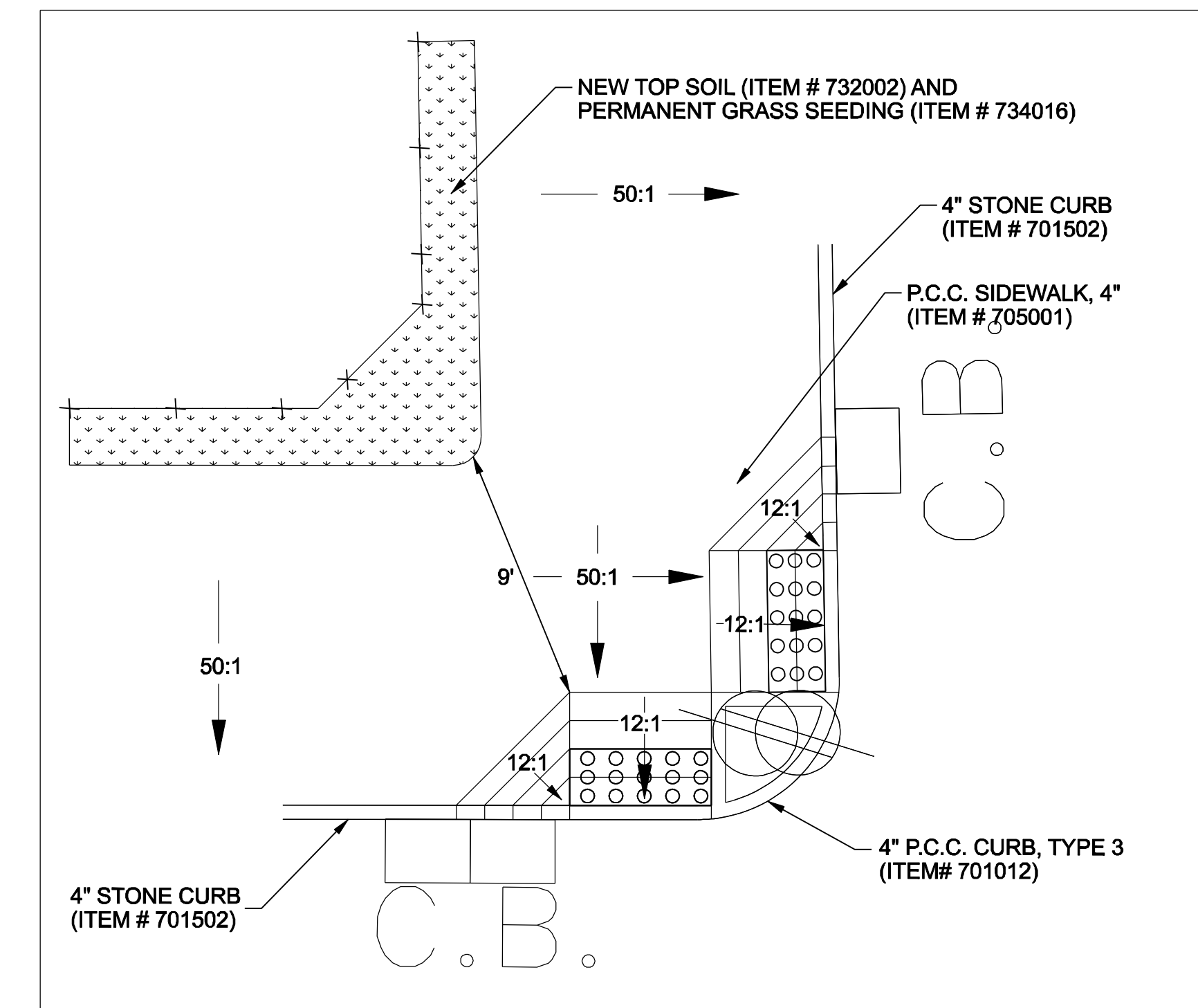
DETAIL 1
PROPOSED SIDEWALK WITH PROPOSED STONE CURB



DETAIL 2
PAVEMENT PATCH



DETAIL 3
TRENCH DRAIN



DETAIL 4
PROPOSED COMBINATION RAMP
NORTHWEST CORNER OF A STREET AND CLAYMONT STREET