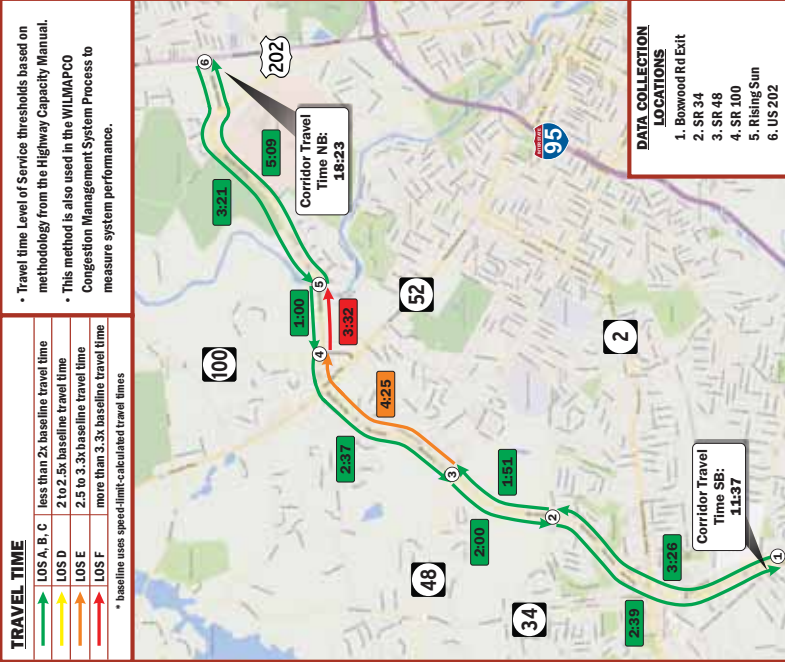


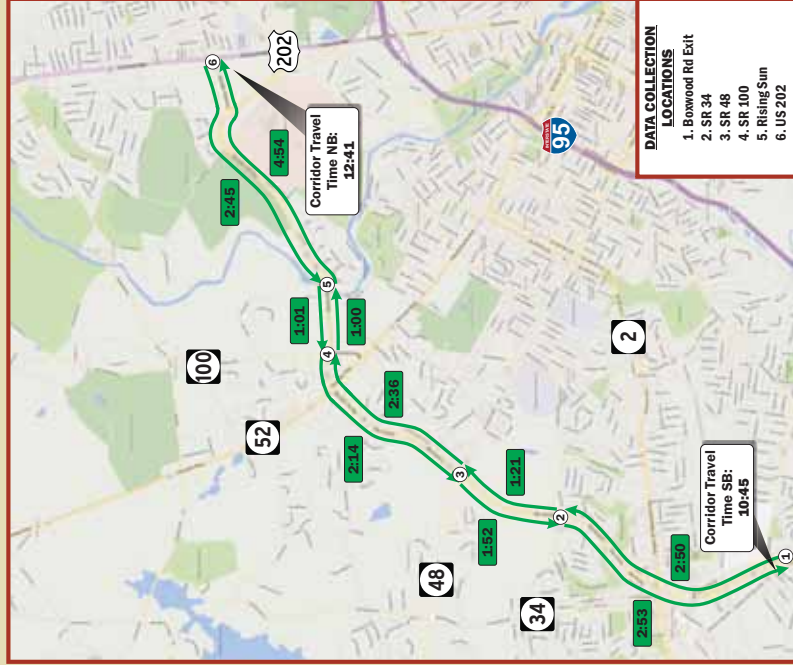
# Existing Conditions - Travel Times

AM Peak - 7:30 AM - 8:30 AM



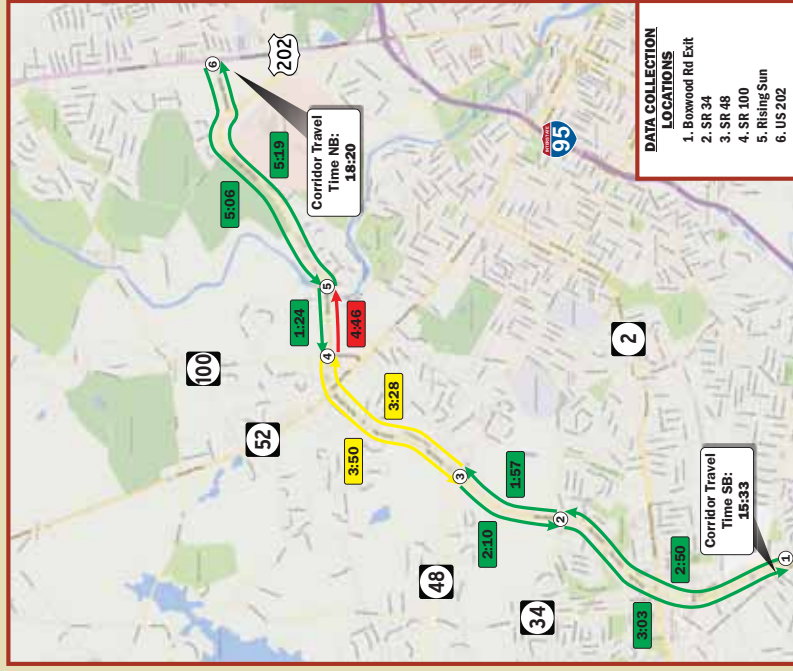
Compared to off-peak (middle of the day) travel conditions, in the AM peak hour, it takes motorists about 6 extra minutes to travel the length of the SR 141 Corridor from SR 2 to US 202. In the opposite (southbound) direction, the difference is only about 1 minute.

Off-Peak - 10:00 AM - 11:00 AM



During the middle of the day, traffic is able to move freely along the SR 141 Corridor at the posted speed limit with little delay at any traffic signal.

PM Peak - 4:45 PM - 5:45 PM



Compared to the off-peak (middle of the day) travel conditions, in the PM peak hour it takes motorists about 6 extra minutes to travel the length of the SR 141 Corridor from SR 2 to US 202. In opposite (southbound) direction, the difference is similar; about 5 extra minutes.

