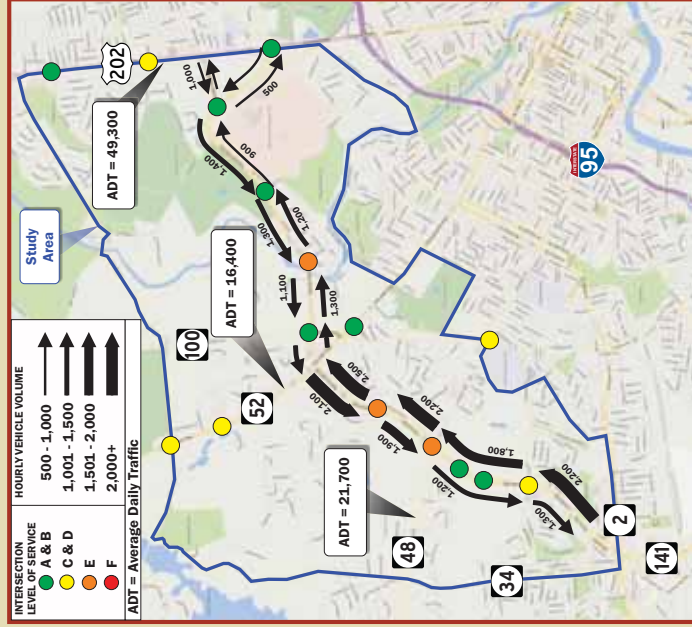


Existing Conditions - Traffic Volumes & Operations

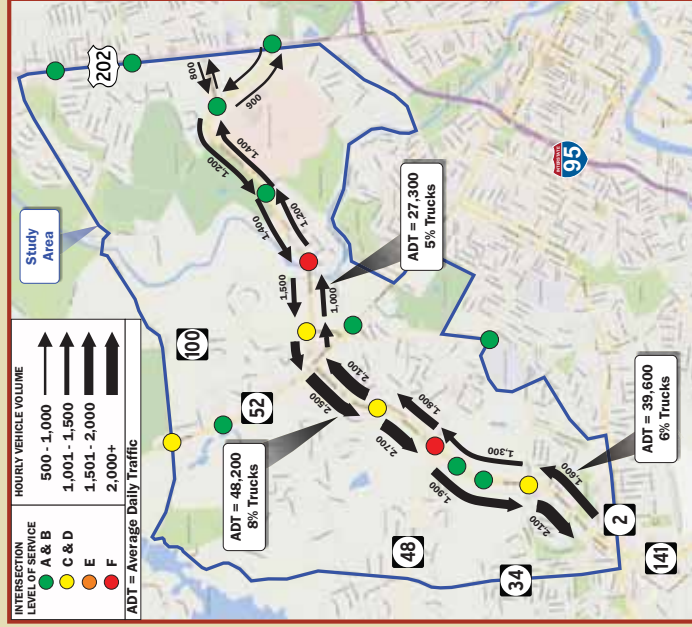
Comments

- The heaviest volumes occur Monday-Friday.
- The SR 141 Corridor experiences well defined AM & PM weekday peaks, with lighter volumes during off-peak hours and weekends.
- Currently all intersections along the SR 141 Corridor operate acceptably (LOS D or better) except:
 - SR 141 @ SR 48
 - SR 141 @ Barley Mill
 - SR 141 @ Rising Sun Lane
- All other key intersections within the Study Area also operate acceptably.
- Traffic volumes on SR 141 south of SR 52 range from 40,000 - 50,000 vehicles per day.
- Traffic volumes on SR 141 north of SR 52 are notably lower, approximately 27,000 vehicles per day.
- Peak hour traffic volumes on SR 141 typically fluctuate by 5-10% from day-to-day throughout the work week.

AM Peak Hour (7:30 AM - 8:30 AM)



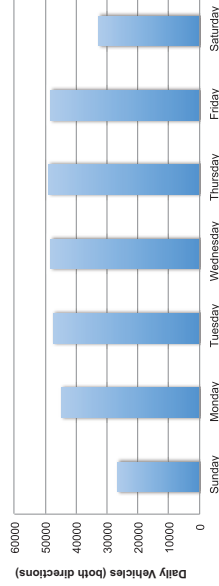
PM Peak Hour (4:45 PM - 5:45 PM)



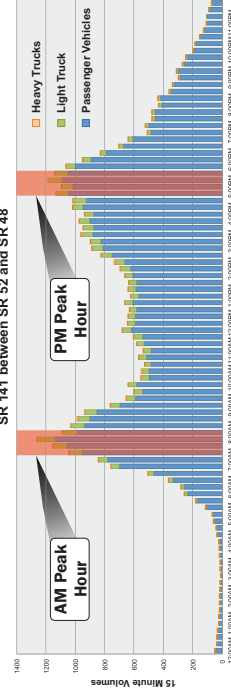
Intersection Level of Service	Description
A	Minimal delays
B	Low levels of delay and queuing
C	Modest queues may build up, but traffic flow still stable and all vehicles clear intersection in one signal cycle.
D	Delays and queues on one or two approaches may become long.
E	Traffic fills intersection and delays, long queues and delays, some vehicles may be stuck through more than one green indication.
F	Traffic demand exceeds intersection capacity, very long queues and delays, more vehicles stuck through more than one green indication.

Average Volumes - April 2015

Average Volume by Day of Week
SR 141 between SR 52 and SR 48



Weekday Volumes per 15 Minutes
SR 141 between SR 52 and SR 48



Variation in Weekday Peak Hour Volumes

