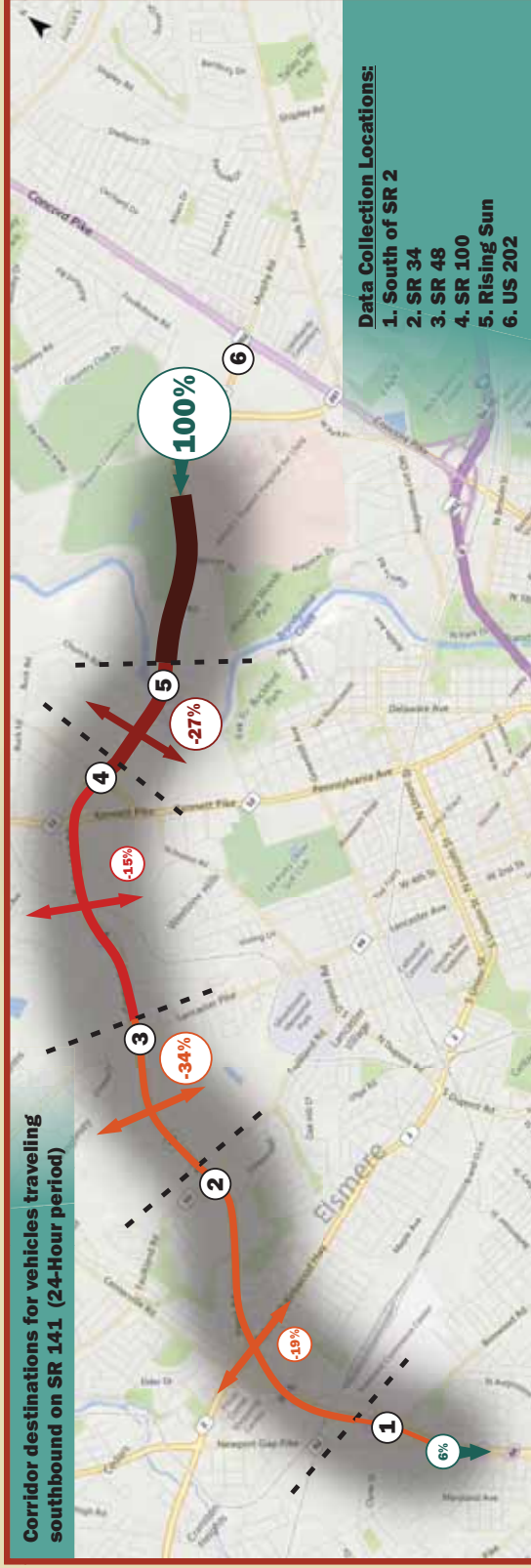
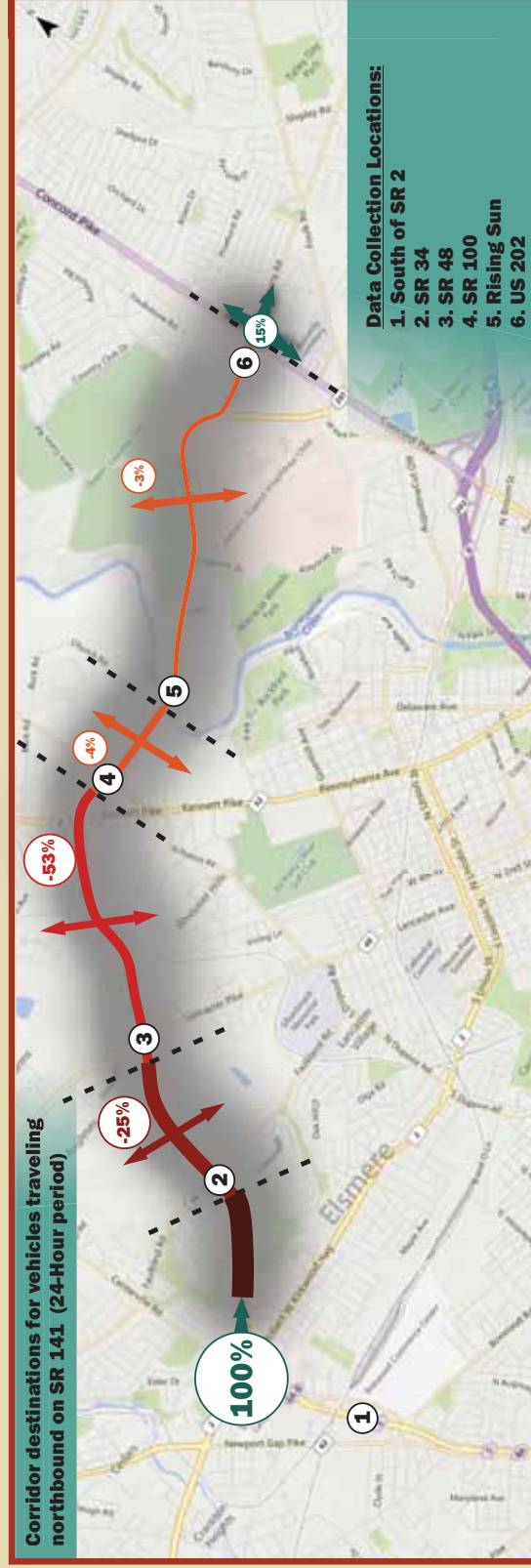


# Existing Conditions - Travel Patterns



## Comments

- In the southbound direction, only 6% of traffic on travels the full length of the SR 141 Corridor from US 202 to destinations beyond SR 2
- The largest destinations for southbound traffic once they cross the Tyler McConnell Bridge are SR 48 and local destinations between SR 34 and SR 48



- In the northbound direction, 15% of the traffic that originates on SR 141 south of SR 34 reaches US 202
- The largest destinations for northbound traffic once they pass SR 34 are SR 48, SR 52 and local destinations between them

