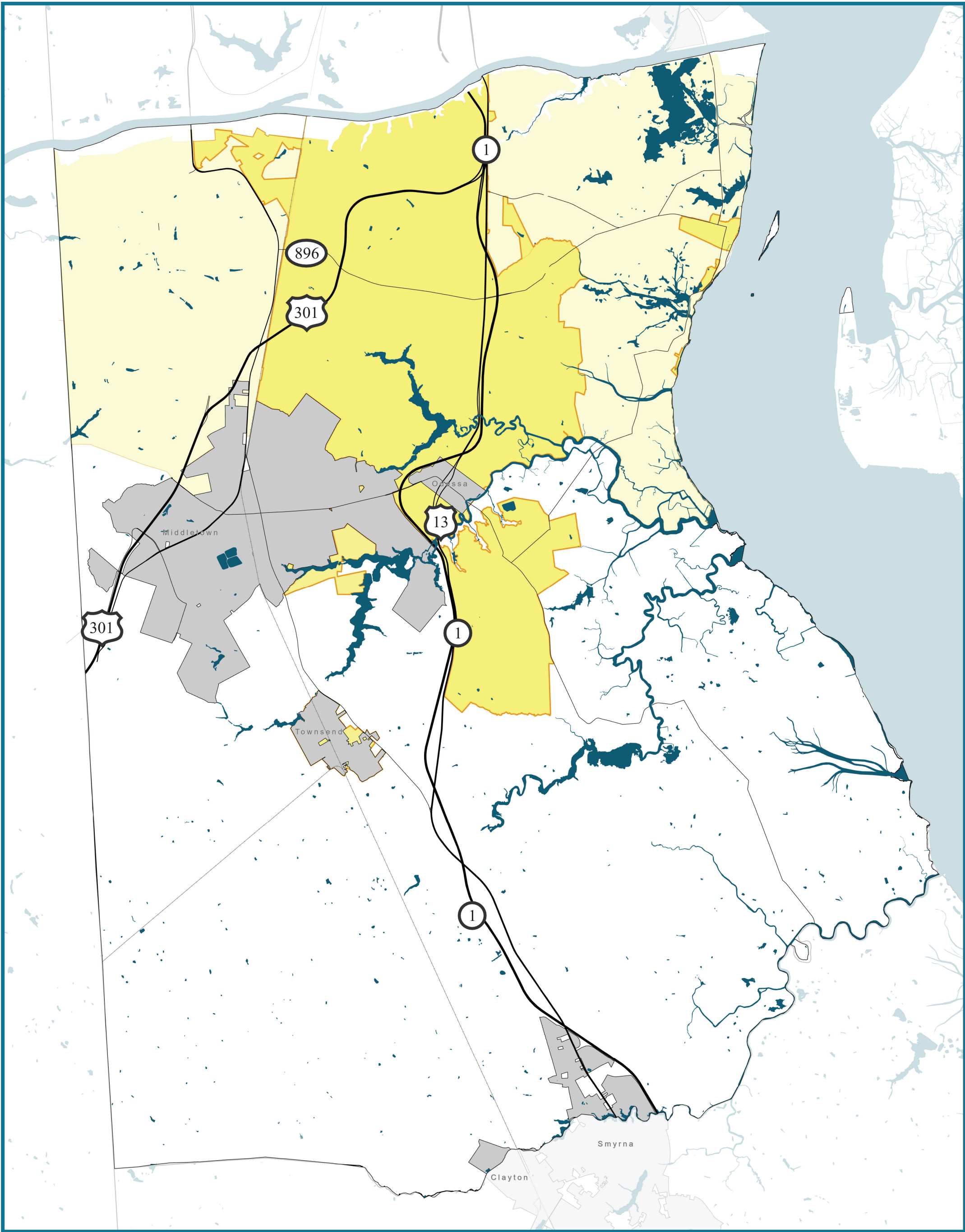


# Future Sewer Service

## Sewer Service Area (Scenario 1 / Comprehensive Plan 2012)

- Total sewer service area: 44,584 acres
- Total prime ag soils in sewer service area: 25,973 acres

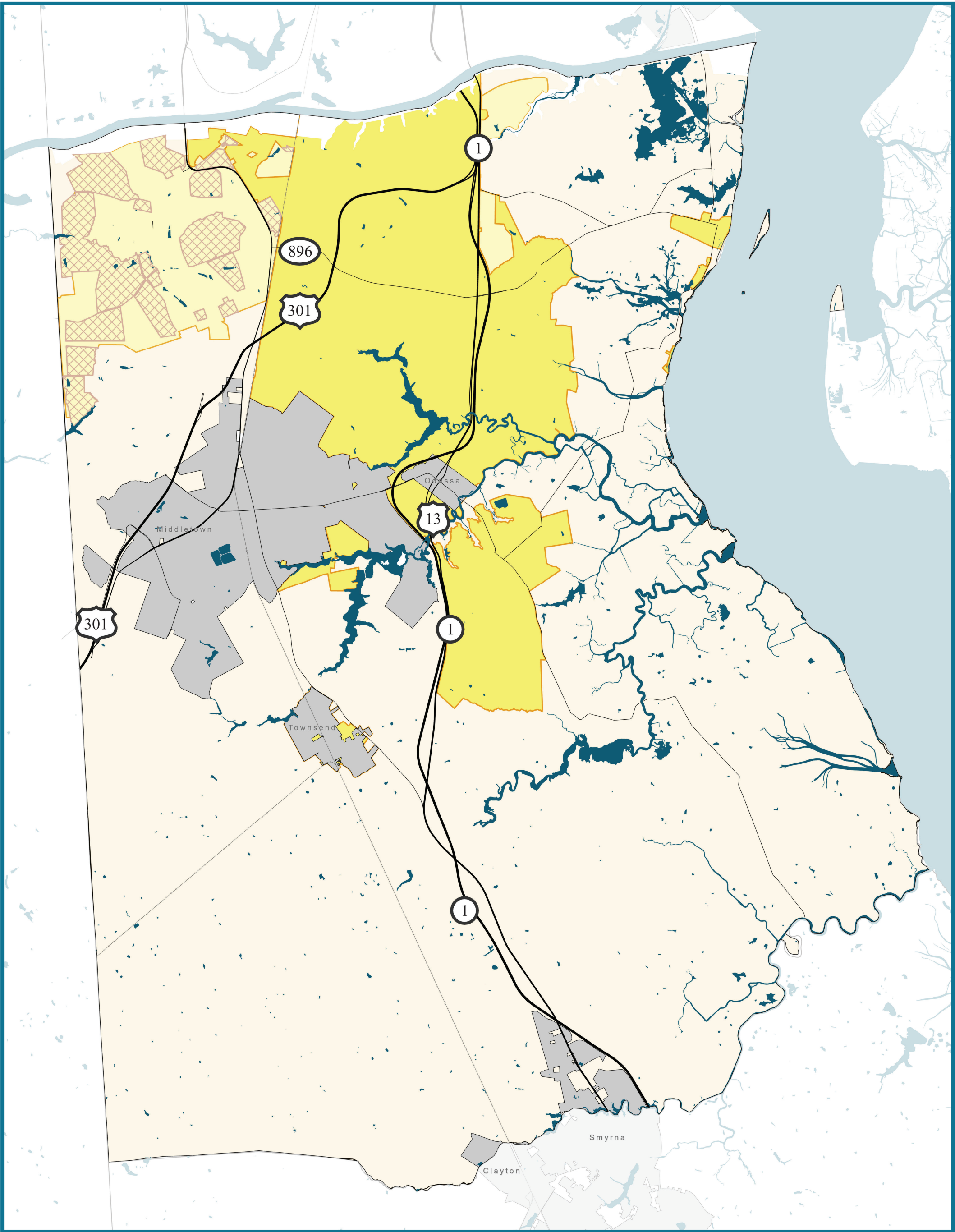


### Map Key

- Existing Sewered Area
- 2012 Comprehensive Plan Future Sewer Area
- Municipalities

## Proposed Sewer Service Area (Scenarios 2 & 3)

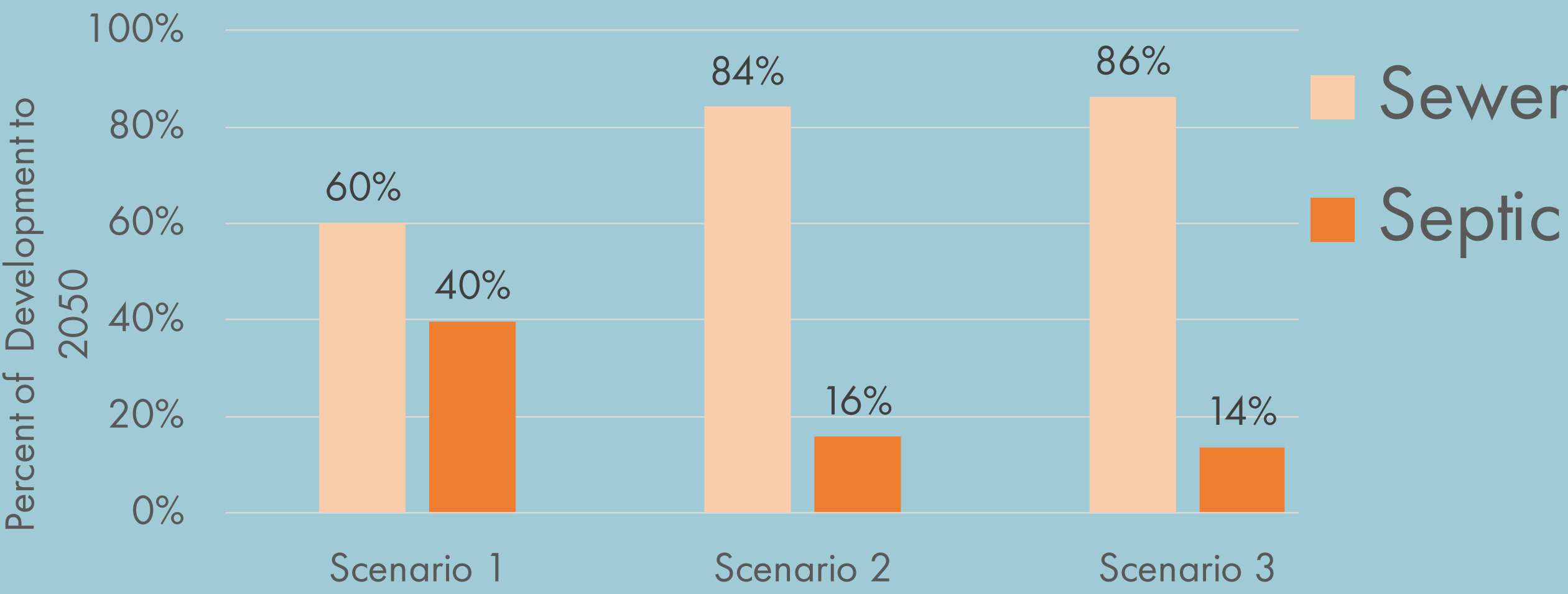
- Total sewer service area: 28,408 acres
- Total prime ag soils in sewer service area: 18,822 acres



### Map Key

- Existing Sewered Area
- Potential Revised Future Sewer Area
- Existing Subdivisions on Septic In New Sewer Area
- No Sewer Planned
- Municipalities

## Comparison of developments (2050) that would be sewerred vs. those that would utilize septic systems



Note: Scenario 1 assumes that development outside of the Central Core will be on septic systems. While the East and West Wings are planned for future sewer service, it is uncertain when and where sewer will go. Current trends suggest that residential development outside the Central Core is primarily being built on septic systems.