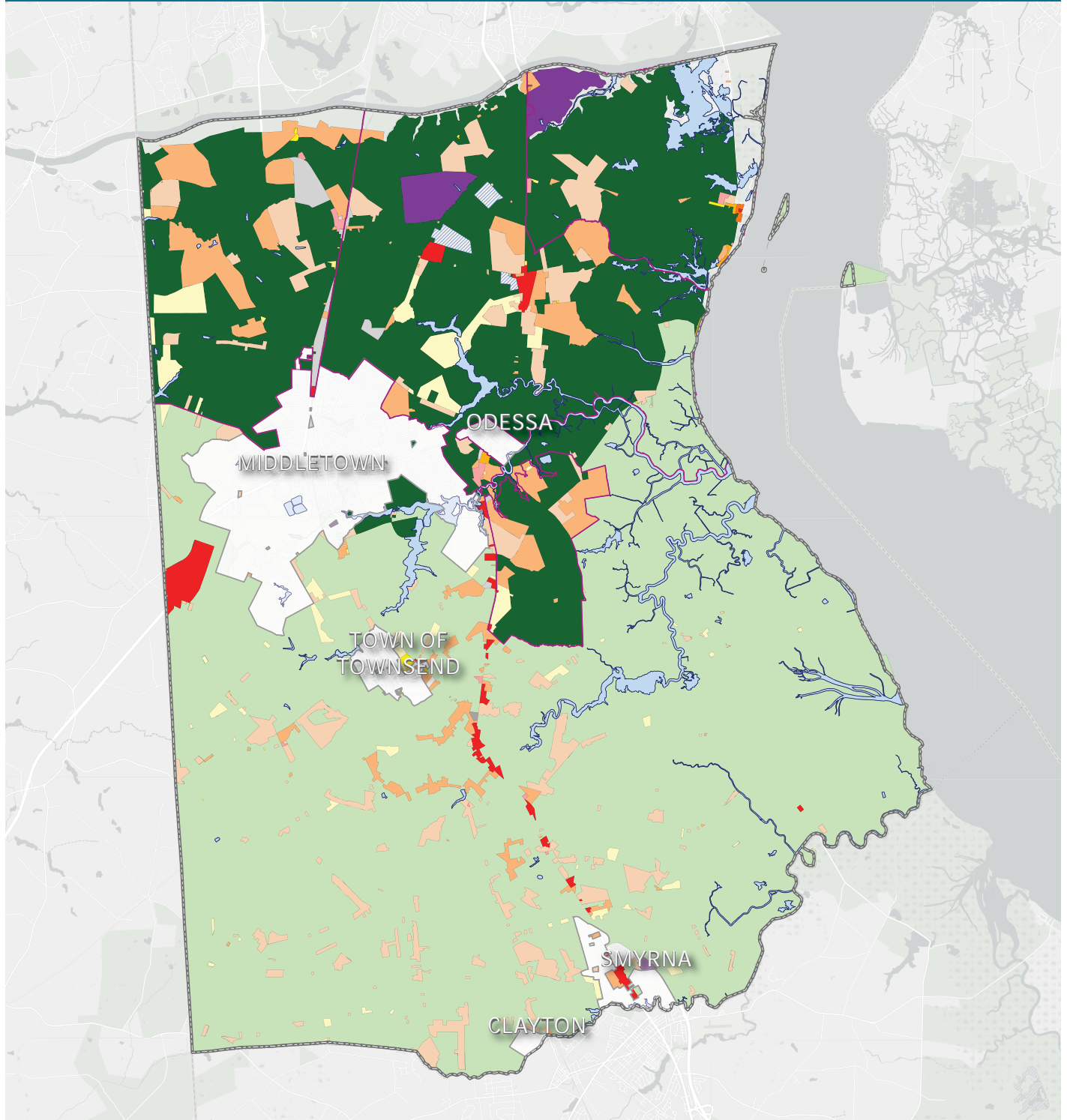


Southern New Castle County Zoning Designation



- | | | | | |
|----------------------|----------------------|----------------------------------|-------------------------|------------------|
| Suburban Reserve | NC15 - 15,000 sq.ft. | NCGA - Garden Apartment | Commercial Regional | Heavy Industrial |
| Suburban Estate | NC21 - 21,000 sq.ft. | NCAP - Apartment | Commercial Neighborhood | Extractive Use |
| Suburban | NC40 - 40,000 sq.ft. | NCMM - Manufactured Mobile | Business Park | |
| NC5 - 5,000 sq.ft. | NC2A - 2 acre | Suburban Transition | Office Regional | |
| NC6.5 - 6,500 sq.ft. | NCTH - Townhouse | NCPUD - Planned Unit Development | Office Neighborhood | |
| NC10 - 10,000 sq.ft. | NCSL - Semi-detached | Municipalities | Industrial | |

