

# RTP APPENDIX - N

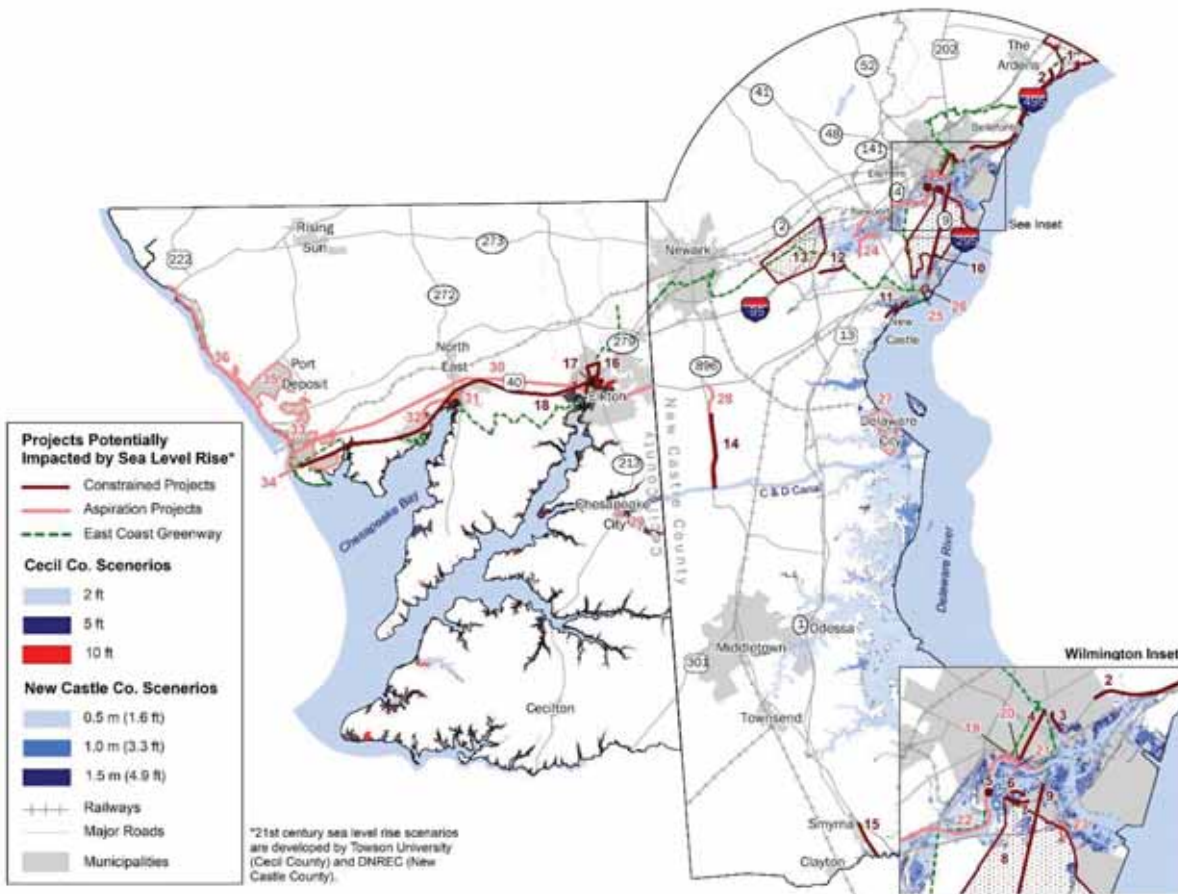
## Potential Sea Level Rise Impacts vs Projects

The map and listing below identify which projects in our constrained and aspiration list may be impacted by Sea Level Rise (SLR). This is an updated assessment of the vulnerability of planned projects, following the identification methodology pioneered in the 2011 SLR Transportation Vulnerability Assessment ([www.wilmapco.org/slr](http://www.wilmapco.org/slr)).

Projects within Cecil County were overlaid with SLR scenarios developed by Towson University – which range from 2 feet, to 5 feet, to a 10 foot surge. In New Castle County, we compare Delaware Coastal Programs scenarios to the projects – 0.5 m, 1.0 m, and 1.5 m.

This should be considered a preliminary assessment of potential impacts. The scenarios in both counties are rough estimates of potential SLR impacts, which do not fully account for local conditions. Still, SLR impacts to the projects below should be considered during project development.

**Map of Planned Projects Vulnerable to Sea Level Rise**



## List of Planned Projects Vulnerable to Sea Level Rise

ID	PROJECT	LIST	IN SERVICE	SCENARIO IMPACT
n/a	East Coast Greenway	Constrained	2022-2035	0.5m
1	North Claymont Area Master Plan (projects grouped for mapping purposes)	Constrained	2050	0.5m
2	Governor Printz Boulevard Road Diet	Constrained	2030	1.0m
3	Wilmington Traffic Calming; 12th St. Connector	Constrained	2025	0.5m
4	Walnut St., Front St. to 13th St. with sweep removal	Constrained	2024	1.0m
5	Christina River Bridge	Constrained	2020	0.5m
6	New Sweden Road Extension (South Wilmington)	Constrained	2040	0.5m
7	Garasches Lane	Constrained	2021	0.5m
8	Route 9 Corridor Master Plan (projects grouped for mapping purposes)	Constrained	2030	0.5m
9	SR 9: Landers Ln - A St	Constrained	2030	0.5m
10	SR 9, New Castle Ave - 3rd St to Landers Ln, Pavement Reconstuction	Constrained	2030	1.0m
11	SR 9, River Rd. Area, Dobbinsville (viaduct)	Constrained	2040	1.0m
12	Center Boulevard extended to Churchmans Rd	Constrained	2021	0.5m
13	Churchmans Crossing FY 2005 Sidewalks & Bus Stop Improvements	Constrained	2030	0.5m
14	Glasgow Pathway: Porter Rd - Canal	Constrained	2035	0.5m
15	US 13: Duck Creek to SR 1	Constrained	2030	1.5m
16	Elkton Bus Service Circulator	Constrained	2030	5ft
17	MD 213, Bridge St.: US 40 to MD 279, Multi-lane urban reconstruction	Constrained	2036	10ft
18	Maryland Commuter Rail: Perryville to Elkton (MARC extension)	Constrained	2029	2ft
19	Water St. West: Shipley Street to West Street	Aspiration	n/a	1.5m
20	Water St. East Extended (French St. to Front St.)	Aspiration	n/a	1.0m
21	S. Walnut Street Bridge Area	Aspiration	n/a	1.0m
22	Christina River Greenway	Aspiration	n/a	0.5m
23	Port of Wilmington Truck Staging Area (exact site undetermined)	Aspiration	n/a	0.5m
24	Airport Rd: Commons Blvd – I-95	Aspiration	n/a	0.5m
25	Route 9; Reconstruct Ferry Cutoff as 4 lanes	Aspiration	n/a	0.5m
26	City of New Castle Intersections (SR9/3rd and SR9/6th & SR9/Delaware St)	Aspiration	n/a	0.5m
27	Delaware City Plan Implementation	Aspiration	n/a	0.5m
28	SR 896: C & D Canal to US 40, Widening to 6 lanes	Aspiration	n/a	1.5m
29	Chesapeake City Parking Plan Implementation	Aspiration	n/a	2ft
30	US 40 Corridor and Intersection Improvements	Aspiration	n/a	5ft
31	North East TOD Pedestrian Improvements	Aspiration	n/a	2ft
32	MD 7, Philadelphia Rd.-Cecil Ave: East limits of Charlestown to MD 272, 2 lane reconstruction	Aspiration	n/a	5ft
33	Perryville Bicycle and Pedestrian Improvements	Aspiration	n/a	2ft
34	Susquehanna River Pedestrian/Bicycle Crossing	Aspiration	n/a	10ft
35	Port Deposit Shared Ride Service	Aspiration	n/a	2ft
36	Lower Susquehanna Heritage Greenway	Aspiration	n/a	5ft

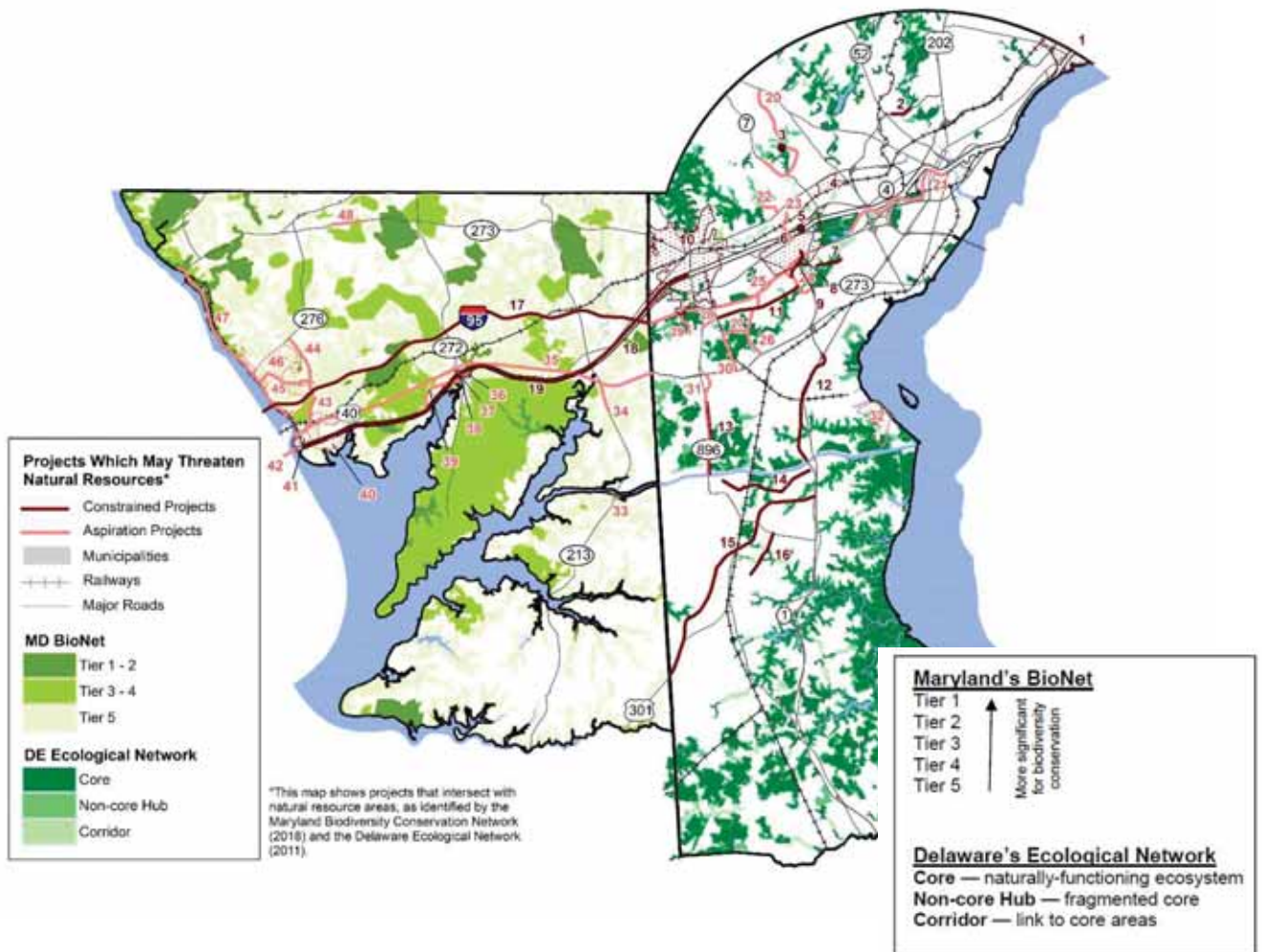
## Sensitive Natural Networks vs Projects

The map and listing below identify which projects in our constrained and aspiration list may impact sensitive natural networks.

Projects in New Castle County were compared against Delaware's Ecological Framework, while those in Cecil County were overlaid with Maryland's BioNet data.

As with potential Sea Level Rise impacts, this should be considered a preliminary, high level, analysis of impacts. Project level environmental mitigation measures can be put into place for many of these projects.

**Map of Projects within Sensitive Natural Networks<sup>1</sup>**



<sup>1</sup> Maryland Department of Natural Resources; Delaware Department of Natural Resources and Environmental Control

## List of Projects within Sensitive Natural Networks

ID	PROJECT	LIST	IN SERVICE	HIGHEST IMPACT
1	North Claymont Area Master Plan (projects grouped for mapping purposes)	Constrained	2050	Core
2	Tyler McConnell Bridge, SR 141, Montchannin Road to Alapocas Road	Constrained	2040	Core
3	Mill Creek Road and Stoney Batter Road Intersection (HSIP)	Constrained	2020	Core
4	Marshallton Circulation Study (projects grouped for mapping purposes)	Constrained	2030	Corridor
5	Fairplay Train Station - Parking	Constrained	2030	Corridor
6	Churchmans Crossing FY 2005 Sidewalks & Bus Stop Improvements	Constrained	2030	Core
7	Center Boulevard extended to Churchmans Rd	Constrained	2021	Core
8	Eagle Run Rd to Continental Drive Connector	Constrained	2040	Non-core Hub
9	Eagle Run Road Connection	Constrained	2020	Non-core Hub
10	Newark Transportation Plan Implementation	Constrained	2030	Core
11	Old Baltimore Pike: SR 72 to SR 273, Sidepath	Constrained	2030	Core
12	SR 1: Tybouts Corner to Roth Bridge	Constrained	2050	Core
13	Glasgow Pathway: Porter Rd - Canal	Constrained	2035	Core
14	N412, Lorewood Grove Road, Rd 412A to SR 1	Constrained	2024	Core
15	US 301: MD State Line to SR 1 (Mainline)	Constrained	2020	Core
16	Cedar Lane, Roadway Improvements	Constrained	2024	Corridor
17	I-95: Susquehanna River to DE Line (Add 1 lane in each direction & Br expansion)	Constrained	2040	Tier 1
18	Rail - Newark to Elkton (SEPTA extension)	Constrained	2030	Tier 2
19	Maryland Commuter Rail: Perryville to Elkton (MARC extension)	Constrained	2029	Tier 2
20	Mill Creek/Hockessin Greenway	Aspiration	n/a	Core
21	Christina River Greenway	Aspiration	n/a	Core
22	Pike Creek Road Sidewalks	Aspiration	n/a	Non-core Hub
23	Churchmans Road Extended, SR 2 to SR 4	Aspiration	n/a	Corridor
24	SR 273: I-95 to SR 1	Aspiration	n/a	Core
25	I-95: MD Line to SR 1	Aspiration	n/a	Core
26	Salem Church Rd: I-95 to US 40, Sidewalks	Aspiration	n/a	Core
27	Reybold Road: SR 72 to Salem Church Rd	Aspiration	n/a	Core
28	Cooch's Bridge/Old Baltimore Pike Greenway	Aspiration	n/a	Corridor
29	SR 896 Corridor Pathway (formerly Iron Hill Bikeway)	Aspiration	n/a	Core
30	SR 72: Reybold to US 40	Aspiration	n/a	Core
31	SR 896: C & D Canal to US 40, Widening to 6 lanes	Aspiration	n/a	Core
32	Delaware City Plan Implementation	Aspiration	n/a	Core
33	Chesapeake City Parking Plan Implementation	Aspiration	n/a	Tier 5
34	MD 213: Frenchtown Road to US 40	Aspiration	n/a	Tier 5
35	US 40 Corridor and Intersection Improvements	Aspiration	n/a	Tier 4
36	Rolling Mill Rd. Bridge (2-lanes with sidewalks)	Aspiration	n/a	Tier 1
37	North East Transit Hub/ Train Station	Aspiration	n/a	Tier 1
38	North East TOD Pedestrian Improvements	Aspiration	n/a	Tier 1
39	MD 7, Philadelphia Rd.-Cecil Ave: East limits of Charlestown to MD 272, 2 lane reconstruction	Aspiration	n/a	Tier 1
40	Perryville Bicycle and Pedestrian Improvements	Aspiration	n/a	Tier 4
41	Perryville Connector Streets	Aspiration	n/a	Tier 5
42	Susquehanna River Pedestrian/Bicycle Crossing	Aspiration	n/a	Tier 1
43	MD 222, Perryville/Bainbridge Rd: US 40 to MD 276	Aspiration	n/a	Tier 4
44	MD 275, Perrylawn Drive: MD 222 to MD 276 (divided highway reconstruct)	Aspiration	n/a	Tier 2
45	MD 222, Bainbridge Rd: MD 275 to Bainbridge entrance, 2 lane reconstruction	Aspiration	n/a	Tier 5
46	Port Deposit Shared Ride Service	Aspiration	n/a	Tier 5
47	Lower Susquehanna Heritage Greenway	Aspiration	n/a	Tier 2
48	MD 273, Telegraph Rd: East Limits of Rising Sun to Sylmar Rd, 2 lane reconstruction	Aspiration	n/a	Tier 4

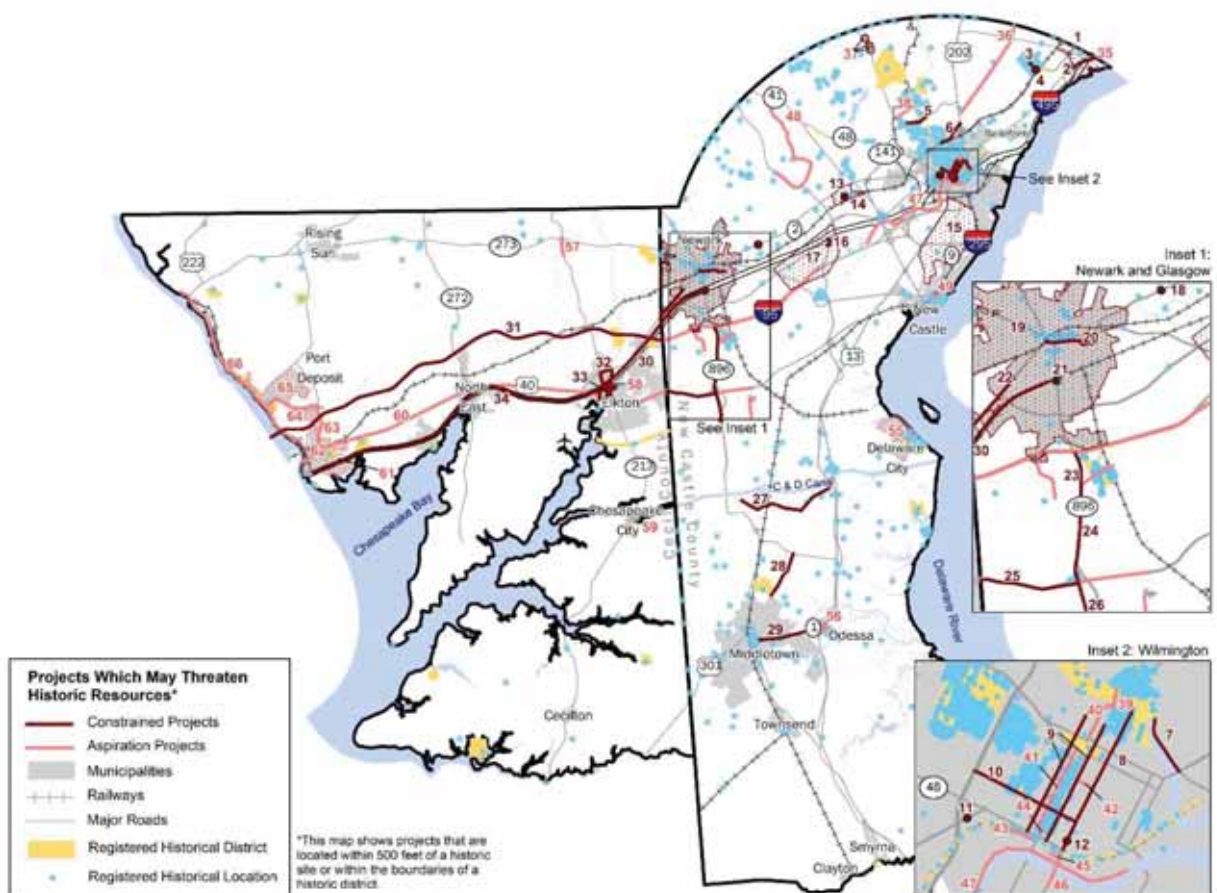
## Cultural Resources vs Projects

The map and listing below identify which projects in our constrained and aspiration list may impact key cultural resources.

Projects in New Castle County were compared against registered sites of historic significance. If a project fell within 500 ft. of the site, or within a specified district, it was flagged.

As with the other analyses in this section, this should be considered a preliminary, high level, analysis of impacts. Project level mitigation measures can be put into place for many of these projects.

Map of Projects Nearby Registered Historic Places<sup>2</sup>



<sup>2</sup> Maryland Historical Trust; Delaware Division of Historical and Cultural Affairs; National Register

### List of Projects Nearby Registered Historic Places

ID	PROJECT	LIST	IN SERVICE
1	North Claymont Area Master Plan (projects grouped for mapping purposes)	Constrained	2050
2	US 13, Philadelphia Pike: I-495 - PA Line	Constrained	2040
3	Harvey Road Traffic Calming (through the Ardens)	Constrained	2036
4	Harvey Road and Sconset Road Pedestrian Improvements	Constrained	2022
5	Tyler McConnell Bridge, SR 141, Montchannin Road to Alapocas Road	Constrained	2040
6	Augustine Cutoff Pathway	Constrained	2022
7	Wilmington Traffic Calming; 12th St. Connector	Constrained	2025
8	Walnut St., Front St. to 13th St. with sweep removal	Constrained	2024
9	King & Orange Streets, MLK Blvd. to 13th St.	Constrained	2020
10	4th St., Walnut St. to I-95	Constrained	2023
11	Maryland Ave. and Monroe Street	Constrained	2025
12	Wilmington Transit Center	Constrained	2020
13	Marshallton Circulation Study (projects grouped for mapping purposes)	Constrained	2030
14	Old Capitol Trail/ Stanton Rd Roundabout	Constrained	2030
15	Route 9 Corridor Master Plan (projects grouped for mapping purposes)	Constrained	2030
16	SR 4, Ogetown Stanton Road/ SR 7, Christiana Stanton Road Phase 1, Stanton Split	Constrained	2030
17	Churchmans Crossing FY 2005 Sidewalks & Bus Stop Improvements	Constrained	2030
18	SR 2/ Red Mill Rd. Intersection Improvements	Constrained	2022
19	Newark Transportation Plan Implementation	Constrained	2030
20	Delaware Avenue Separated Bicycle Facility	Constrained	2022
21	Newark Regional Transportation Center, Phase II	Constrained	2021
22	SR 2, Elkton Road: MD Line to Casho Mill Rd	Constrained	2021
23	SR 896: US 40 to I-95 (widening to six lanes)	Constrained	2050
24	DE 896: Old Baltimore Pike to Porter Road, Sidepaths	Constrained	2030
25	US 40: MD State Line to SR 896, Sidepaths	Constrained	2030
26	Glasgow Ave Improvements	Constrained	2030
27	N412, Lorewood Grove Road, Rd 412A to SR 1	Constrained	2024
28	Cedar Lane, Roadway Improvements	Constrained	2024
29	SR 299, SR 1 to Catherine Street	Constrained	2022
30	Rail - Newark to Elkton (SEPTA extension)	Constrained	2030
31	I-95: Susquehanna River to DE Line (Add 1 lane in each direction & Br expansion)	Constrained	2040
32	Elkton Bus Service Circulator	Constrained	2030
33	MD 213, Bridge St.: US 40 to MD 279, Multi-lane urban reconstruction	Constrained	2036
34	Maryland Commuter Rail: Perryville to Elkton (MARC extension)	Constrained	2029

### List of Projects Nearby Registered Historic Places (continued)

ID	PROJECT	LIST	IN SERVICE
35	Philadelphia Pike: Naamans Rd - PA Line	Aspiration	n/a
36	Foulk Road Sidewalks	Aspiration	n/a
37	SR 52 and Snuff Mill Rd, Twadell Mill Rd, Center Meeting Rd Intersections	Aspiration	n/a
38	Buck Rd Sidewalk	Aspiration	n/a
39	Convert 1500 block of King St to two-way street	Aspiration	n/a
40	Market Street: 11th to 16th Sts.	Aspiration	n/a
41	ShIPLEY Street Enhancements: 12th Street to MLK Blvd.	Aspiration	n/a
42	Two-way traffic on 8th St between King & Walnut Sts	Aspiration	n/a
43	Water St. West: Shipley Street to West Street	Aspiration	n/a
44	Add Southbound lanes on Market St between 2nd St and MLK Blvd	Aspiration	n/a
45	Water St. East Extended (French St. to Front St.)	Aspiration	n/a
46	S. Walnut Street Bridge Area	Aspiration	n/a
47	Christina River Greenway	Aspiration	n/a
48	Mill Creek/Hockessin Greenway	Aspiration	n/a
49	Route 9; Reconstruct Ferry Cutoff as 4 lanes	Aspiration	n/a
50	I-95: MD Line to SR 1	Aspiration	n/a
51	SR 896 Corridor Pathway (formerly Iron Hill Bikeway)	Aspiration	n/a
52	Cooch's Bridge/Old Baltimore Pike Greenway	Aspiration	n/a
53	US 40: SR 896 to SR72	Aspiration	n/a
54	Del Laws Road, Sidewalks	Aspiration	n/a
55	Delaware City Plan Implementation	Aspiration	n/a
56	US 13: Odessa Transportation Plan Implementation	Aspiration	n/a
57	MD 213, Singerly Rd: North of Providence Rd. to MD 273, 2 lane reconstruction	Aspiration	n/a
58	Elkton Downtown Connector Streets & Streetscaping	Aspiration	n/a
59	Chesapeake City Parking Plan Implementation	Aspiration	n/a
60	US 40 Corridor and Intersection Improvements	Aspiration	n/a
61	MARC Maintenance Facility	Aspiration	n/a
62	Perryville Bicycle and Pedestrian Improvements	Aspiration	n/a
63	MD 222, Perryville/Bainbridge Rd: US 40 to MD 276	Aspiration	n/a
64	MD 222, Bainbridge Rd: MD 275 to Bainbridge entrance, 2 lane reconstruction	Aspiration	n/a
65	Port Deposit Shared Ride Service	Aspiration	n/a
66	Lower Susquehanna Heritage Greenway	Aspiration	n/a