



# 2050 REGIONAL TRANSPORTATION PLAN

*2023 UPDATE*

Our Town  
February 8, 2023



# WHO IS THE WILMINGTON AREA PLANNING COUNCIL (WILMAPCO)?



- Regional transportation planning agency for New Castle County, DE and Cecil County, MD
- Charged with planning and coordinating transportation investments based on federal policy, local input, technical analysis, and best practices.
- We involve the public to ensure that you have a say in the transportation decision-making and funding process.





# Community Engagement

*ongoing*



## Regional Transportation Plan (RTP)

*20-year plan  
updated every 4 years*

## Transportation Improvement Program (TIP)

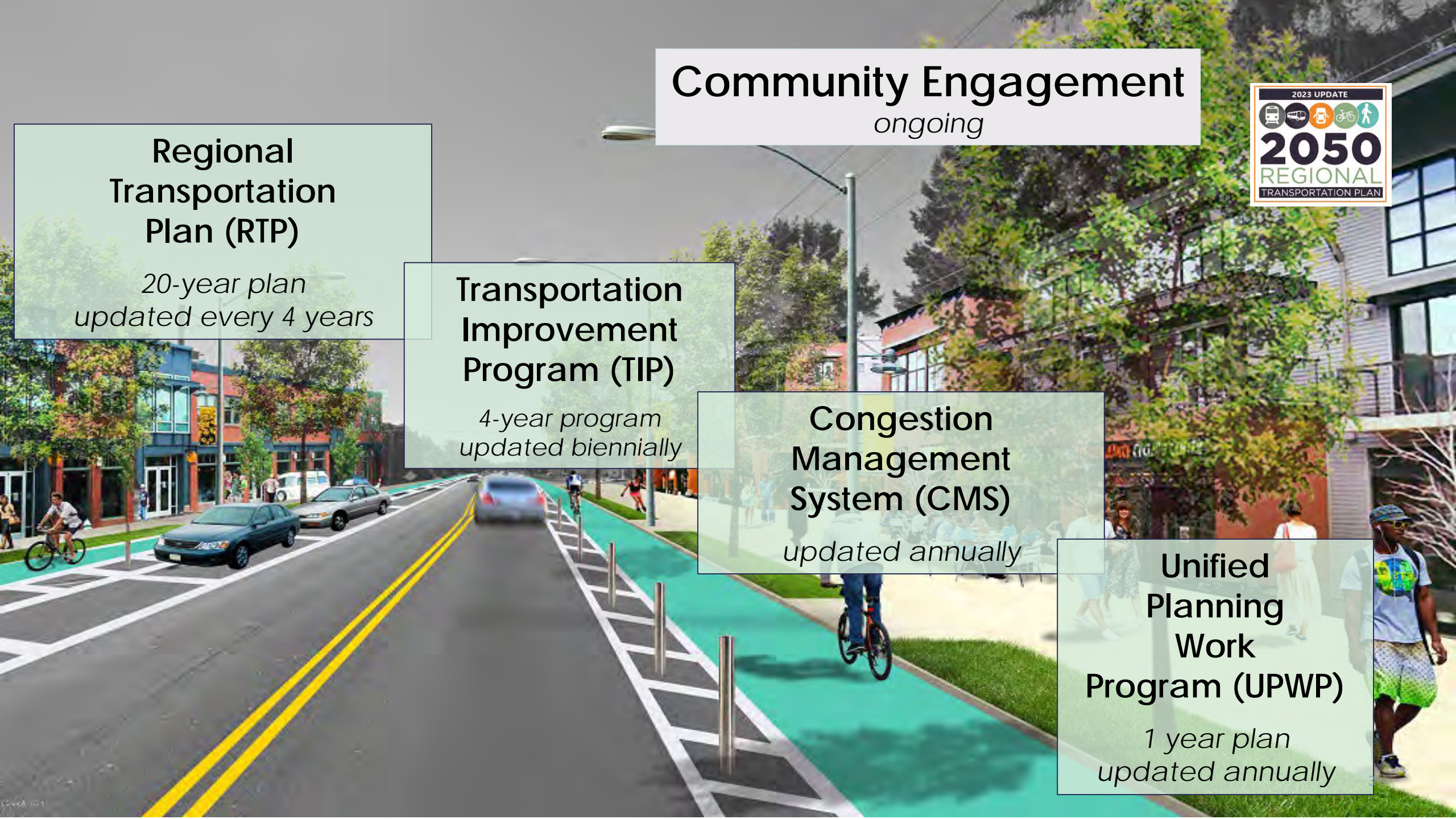
*4-year program  
updated biennially*

## Congestion Management System (CMS)

*updated annually*

## Unified Planning Work Program (UPWP)

*1 year plan  
updated annually*



# TYING OUR DOCUMENTS TOGETHER



Planning  
Regional  
Transportation  
Plan

Studies  
Corridor/Area  
Studies (UPWP)  
& CMS

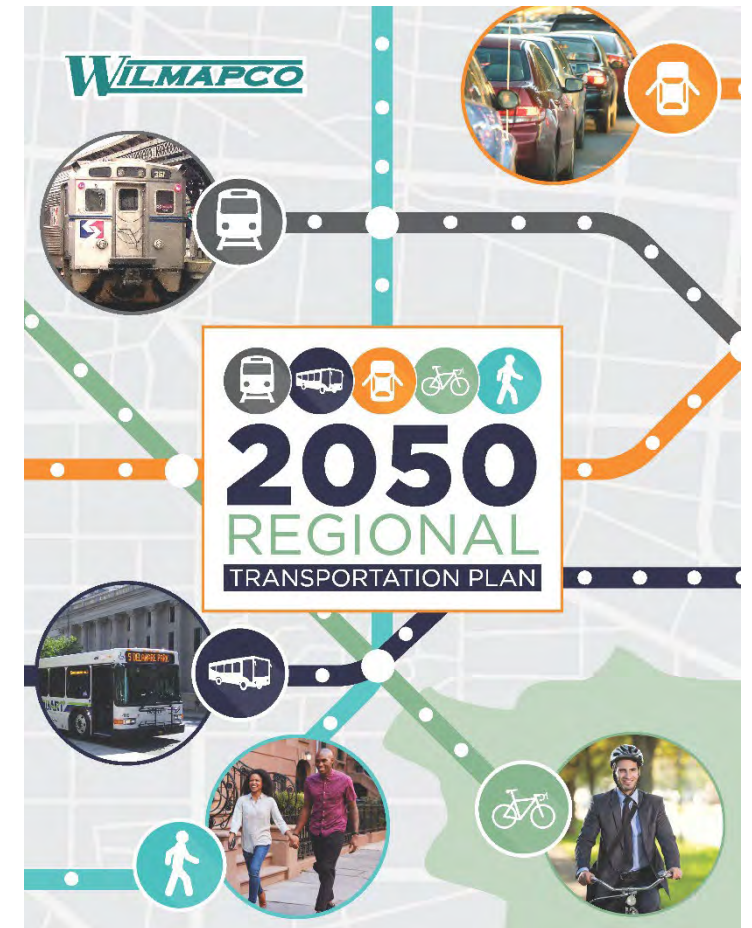
Implementation  
Transportation  
Improvement  
Program



# THE REGIONAL TRANSPORTATION PLAN (RTP)



- Our principal plan
  - **Strategic Policy:** goals, objectives, actions
  - **Major transportation projects:** constrained and aspirational
- Updated every four years (since 1996)
- Update due March 2023



# SCHEDULE – KEY TASKS



- ✓ Review of *Progress Report & Public Opinion Survey*
  - ✓ Develop draft goals, objectives, actions
  - ✓ Agency/Civic/Municipal outreach
  - ✓ Develop project lists
  - ✓ Air quality conformity
- Public Outreach
- Document refinement
- Adoption

June

January - March

March



# TRACKING PROGRESS: PROGRESS REPORT



- 2022 Regional Progress Report
- Relates trends to Plan's actions
- Performance-based
- Informs development of RTP



# TRACKING PROGRESS: PROGRESS REPORT



17% of actions



23% of actions



60% of actions

## Challenges

- Growth outside Centers/Core
- Single occupancy vehicle trips
- Vehicle miles traveled
- Road safety

## Successes

- Air quality
- Local plan implementation
- Bike and walking efforts
- Congestion mitigation



# PUBLIC OPINION SURVEY



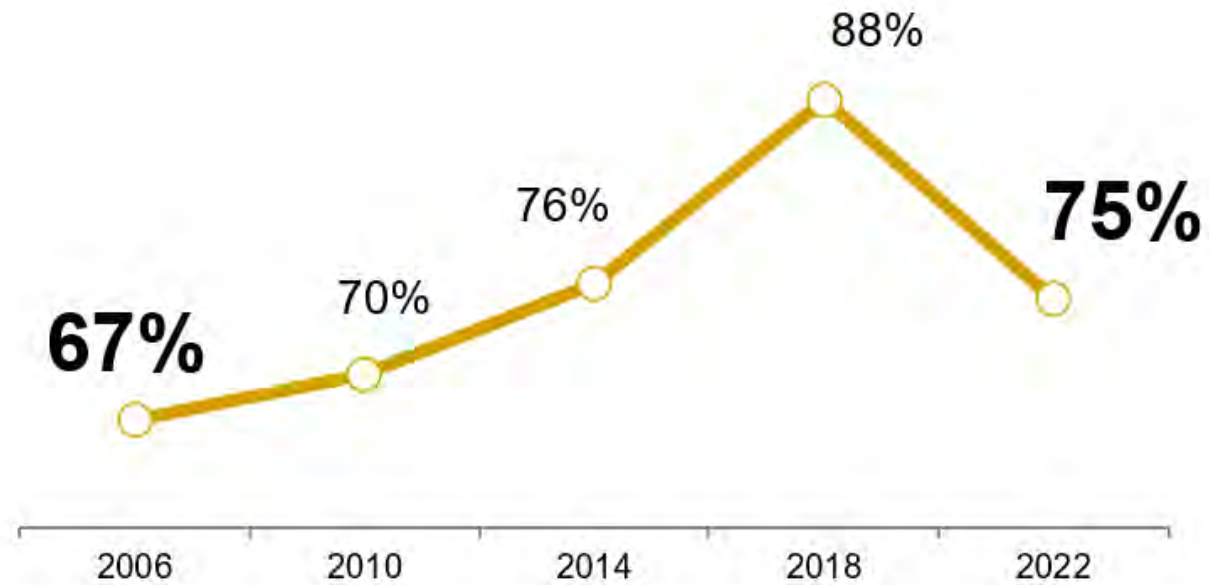
- Statistically valid telephone survey of 600 residents
- Demographic quotas
- Opinions of transportation system and policies
- Informs development of the RTP



# PUBLIC OPINION SURVEY: SAMPLE



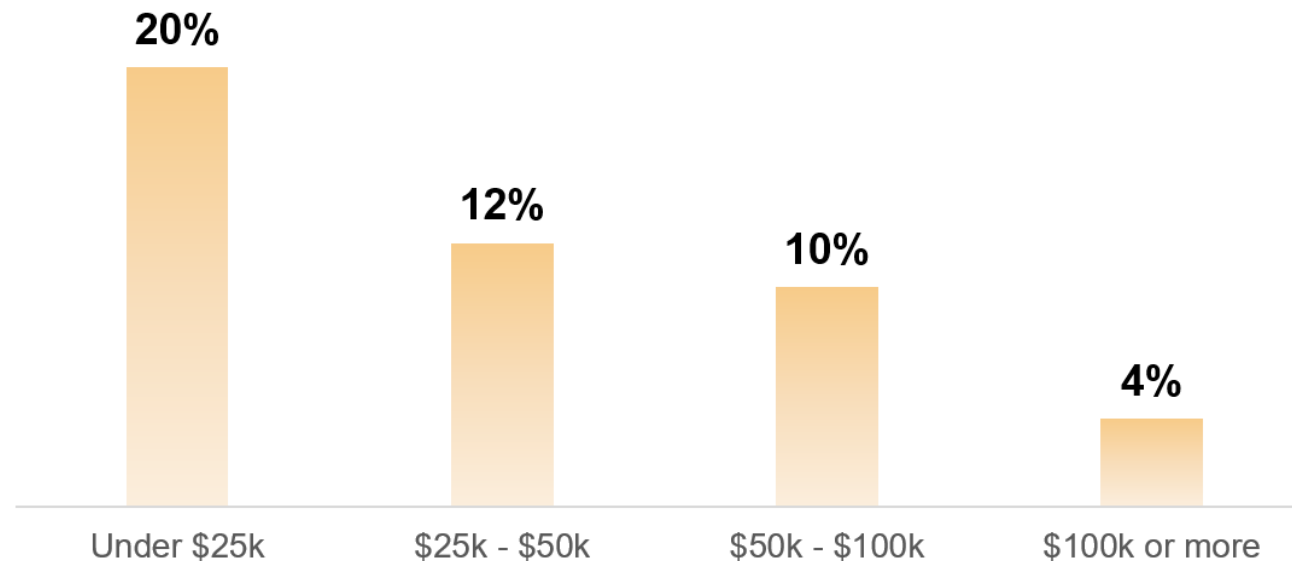
## The Transportation System Meet my Needs



# PUBLIC OPINION SURVEY: SAMPLE



## Transportation Limits me from *Healthy & Affordable Grocery Shopping* (by annual household income)



# RTP: STRATEGIC POLICY



Goals

Objectives

Actions

Performance  
Measures



# RTP: TRANSPORTATION INVESTMENT AREAS



*More intensive transportation investments*



**Center (and future centers)**



**Core**



**Community**

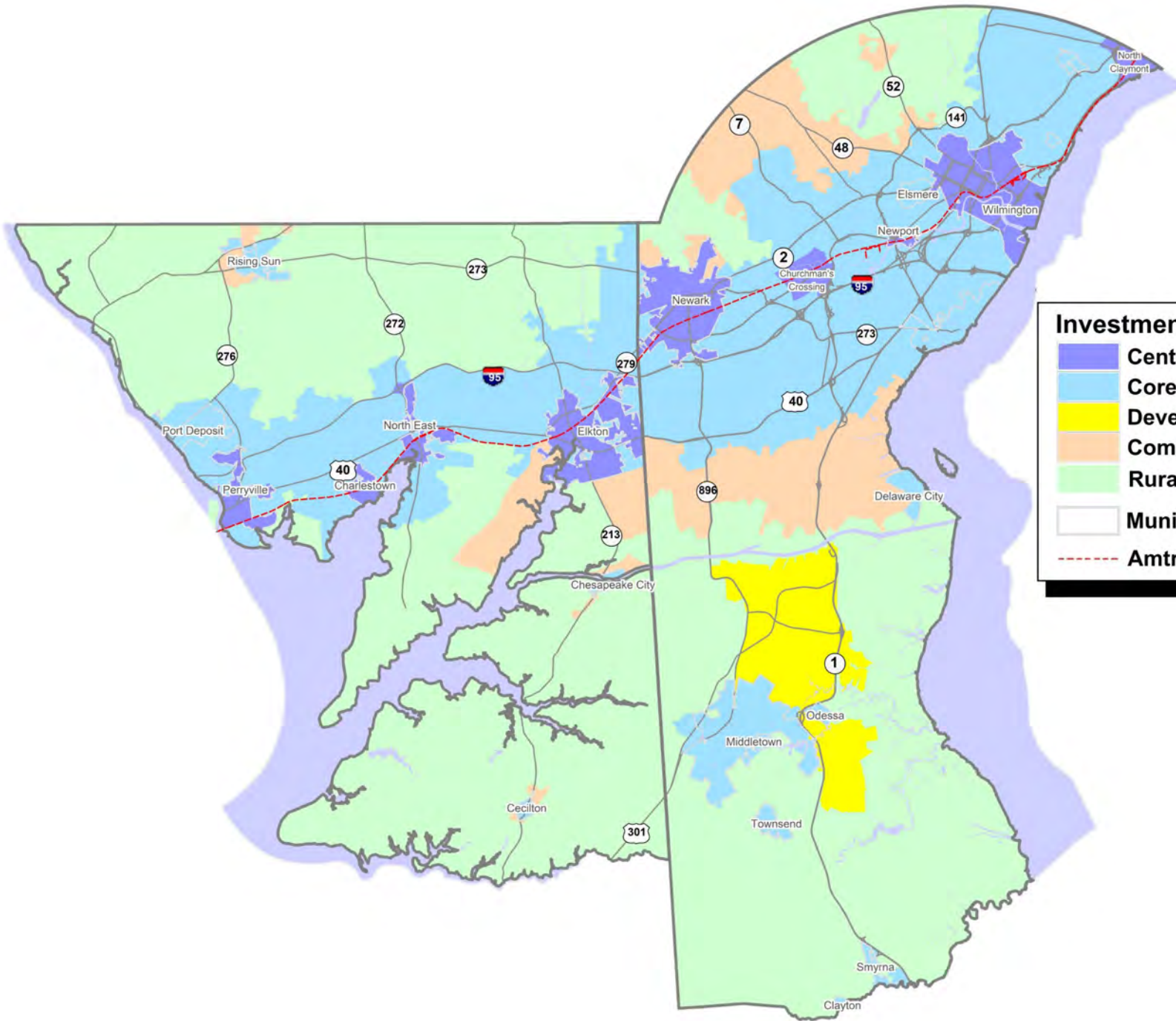


**Developing**



**Rural**



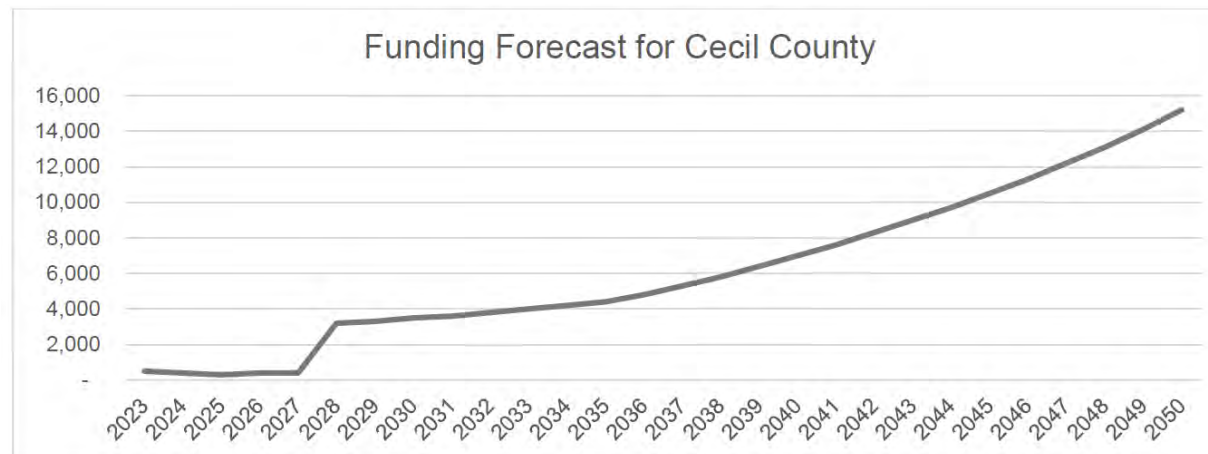
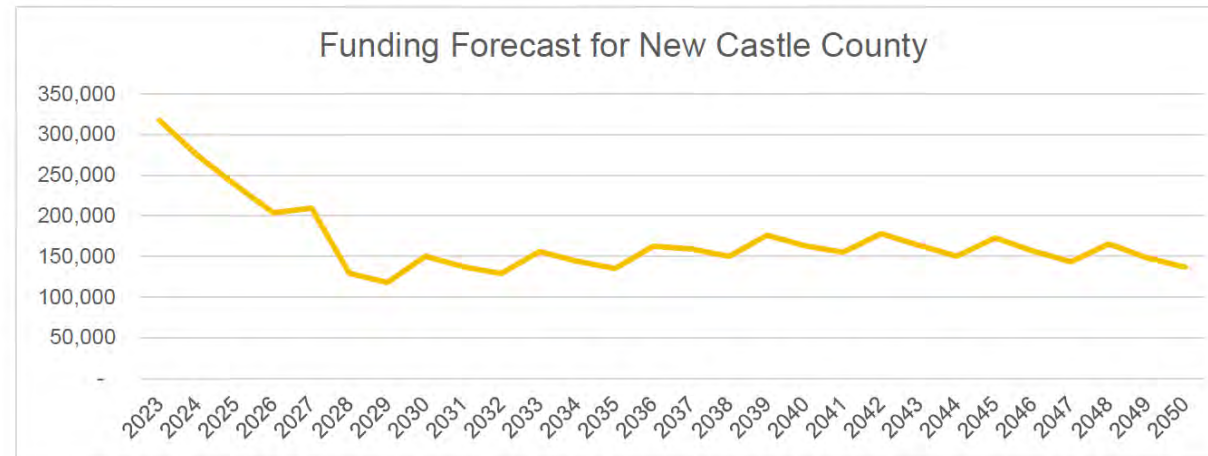


**Investment Areas**

- Center**
- Core**
- Developing**
- Community**
- Rural**
- Municipalities**
- Amtrak**



# FUNDING FORECASTS



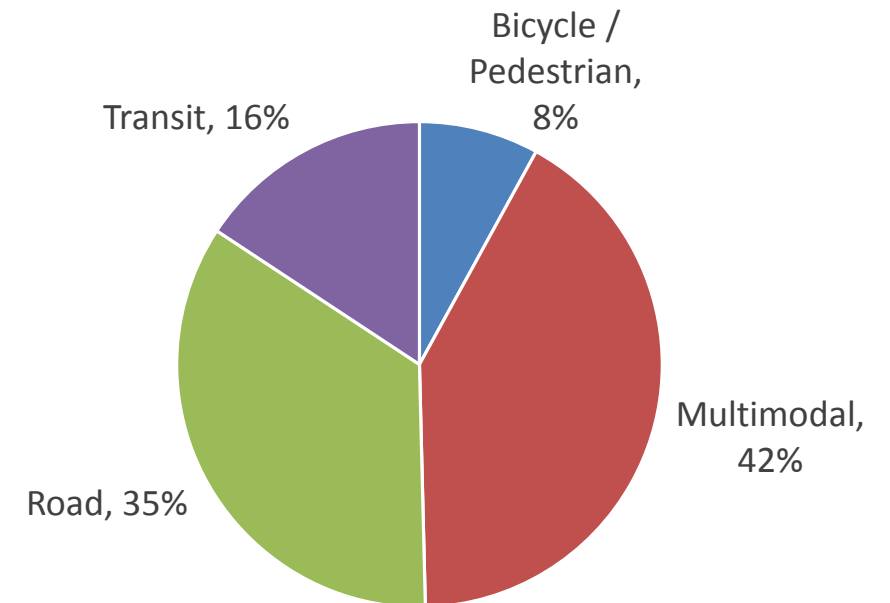
# RTP 2050: 2023 UPDATE PROJECTS



122 fiscally “constrained” projects

221 aspiration/possible grant projects

Constrained Project Funding by Type\*



\*2023 Costs



# RTP 2050: 2023 UPDATE PROJECTS



## SELECTED REGIONAL PROJECTS\*

- I-95: Susquehanna River to DE Line (\$1b, 2050)
- SR 1: Road A to US 40 (\$300m, 2036)
- I-95 and SR 896 Interchange (\$257m, 2026)
- New Active Transportation funding pool (\$214m through 2050)
- I-95 and Belvidere Road Interchange (\$71m, 2025)
- Newark Regional Transportation Center, Phase 3 (\$30m, 2024)
- Mid-county Transit Hub, Cecil County (\$9m, 2029)
- Route 9 Community Pathways (\$1m, 2026)

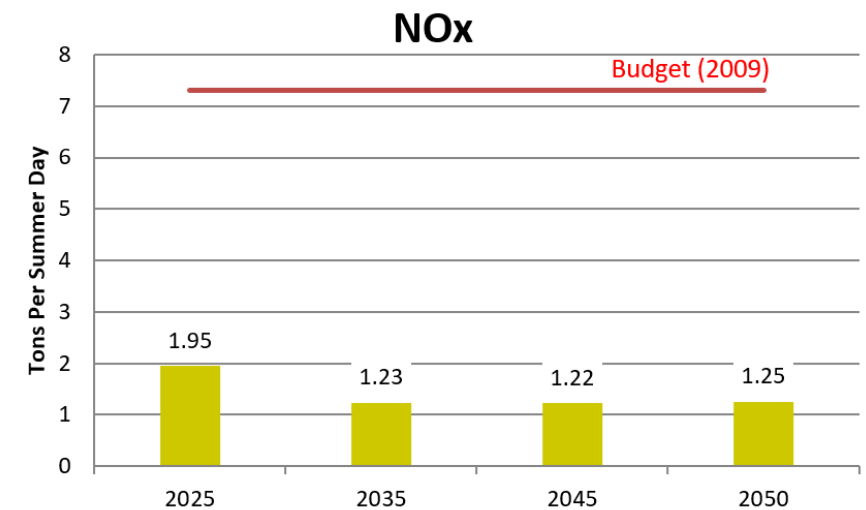


\*In Year of Expenditure Cost

# RTP: AIR QUALITY CONFORMITY



- Work to achieve cleaner air quality
- Major expansion projects modeled
- Conformity has been demonstrated



FOR MORE INFORMATION

[www.wilmapco.org/rtp](http://www.wilmapco.org/rtp)

Phone: 302-737-6205

Email: [wilmapco@wilmapco.org](mailto:wilmapco@wilmapco.org)

#2050RTP



@WILMAPCO