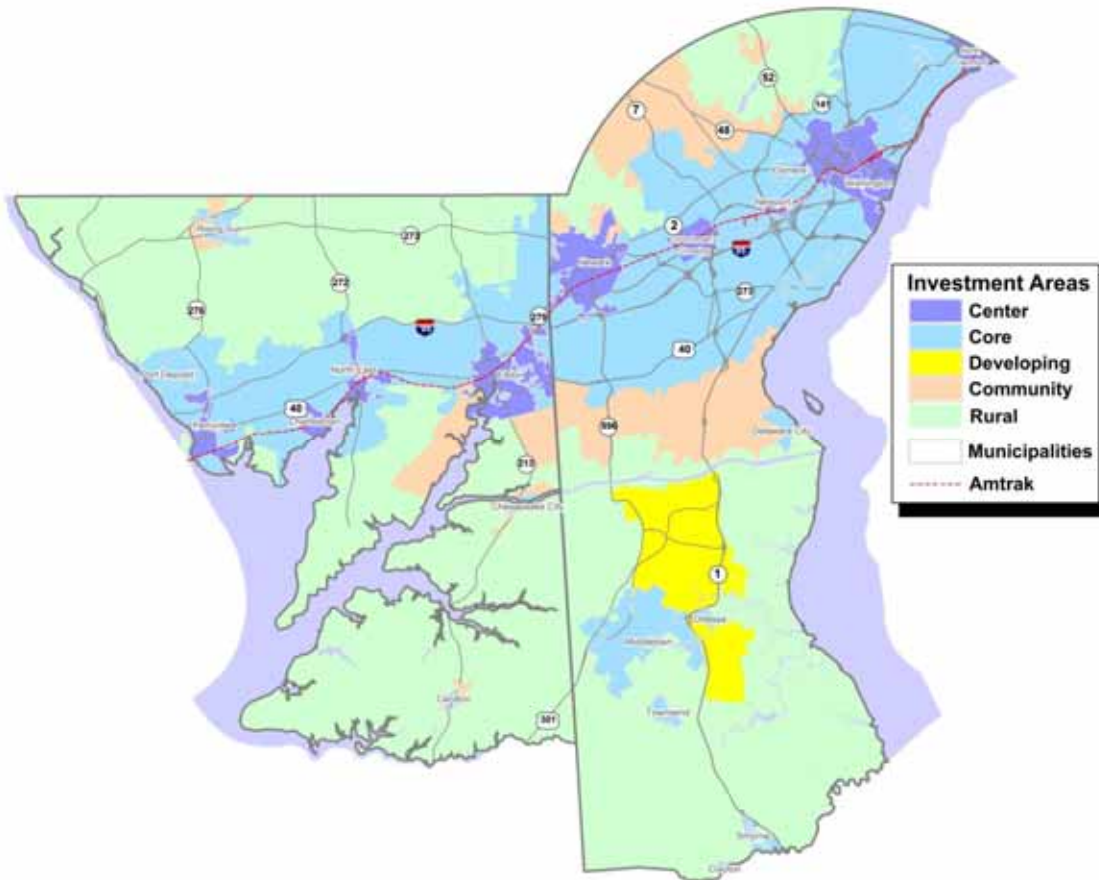


# RTP APPENDIX - N

## TIA Development

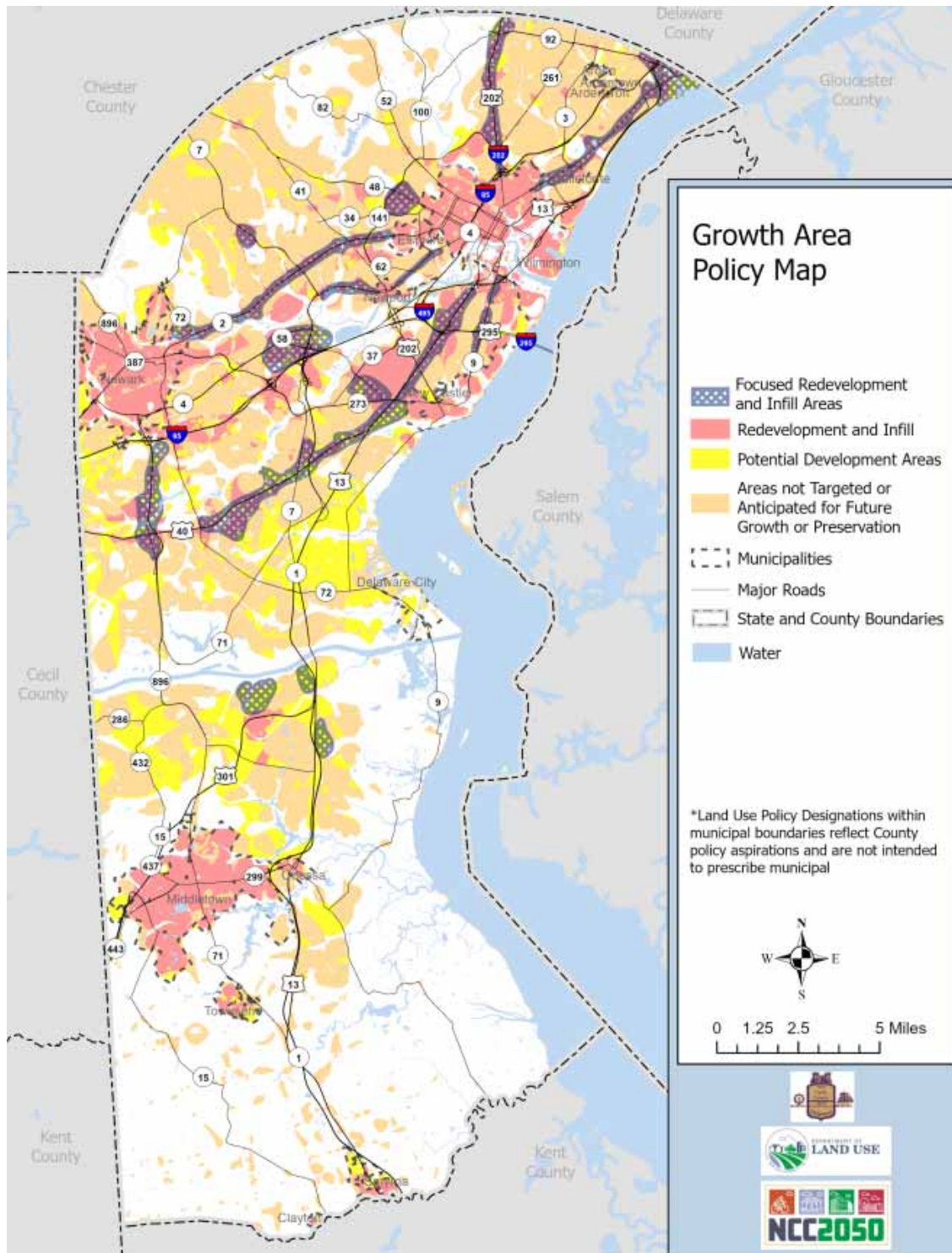
Reflective of current land use patterns and plans, Transportation Investment Areas (TIAs) are used to guide where different types of transportation investments are appropriate. Described in more detail on pages 34-35, these categories include Center, Core, Community, Developing, and Rural.

### Transportation Investment Areas



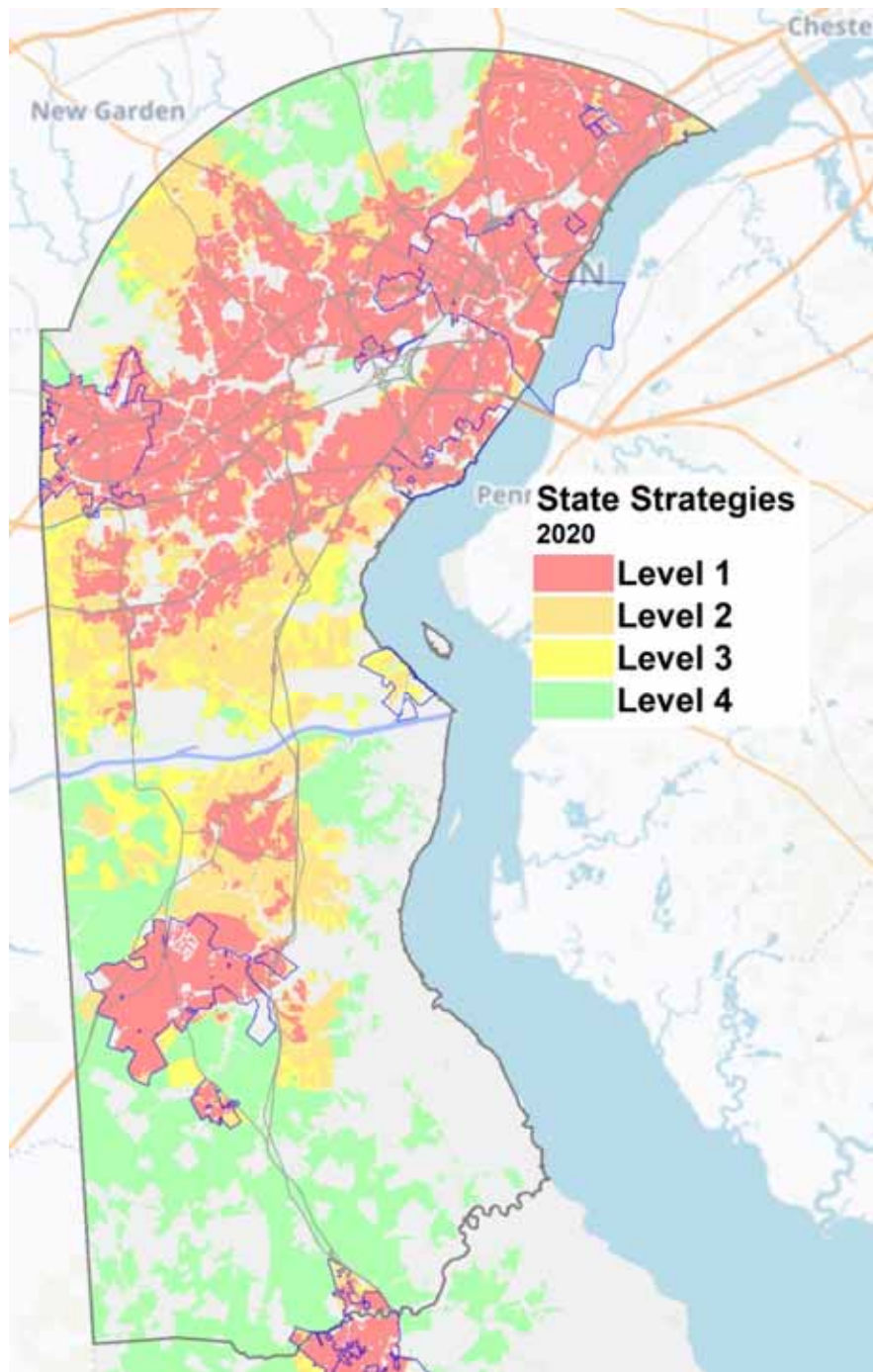
The TIAs were developed by reviewing and consolidating state and county land use plans into a single map. As shown on the following pages, these include the Growth Area Policy Map from the New Castle County 2050 Comprehensive Plan, 2020 Delaware Strategies for State Policies and Spending from the Office of State Planning Coordination, and the Future Land Use Map from the 2010 Cecil County Comprehensive Plan (revised in 2021). The TIAs were reviewed by each agency to ensure that they match the land use priorities in each respective plan.

# New Castle County 2050 Comprehensive Plan – Growth Area Policy Map<sup>1</sup>



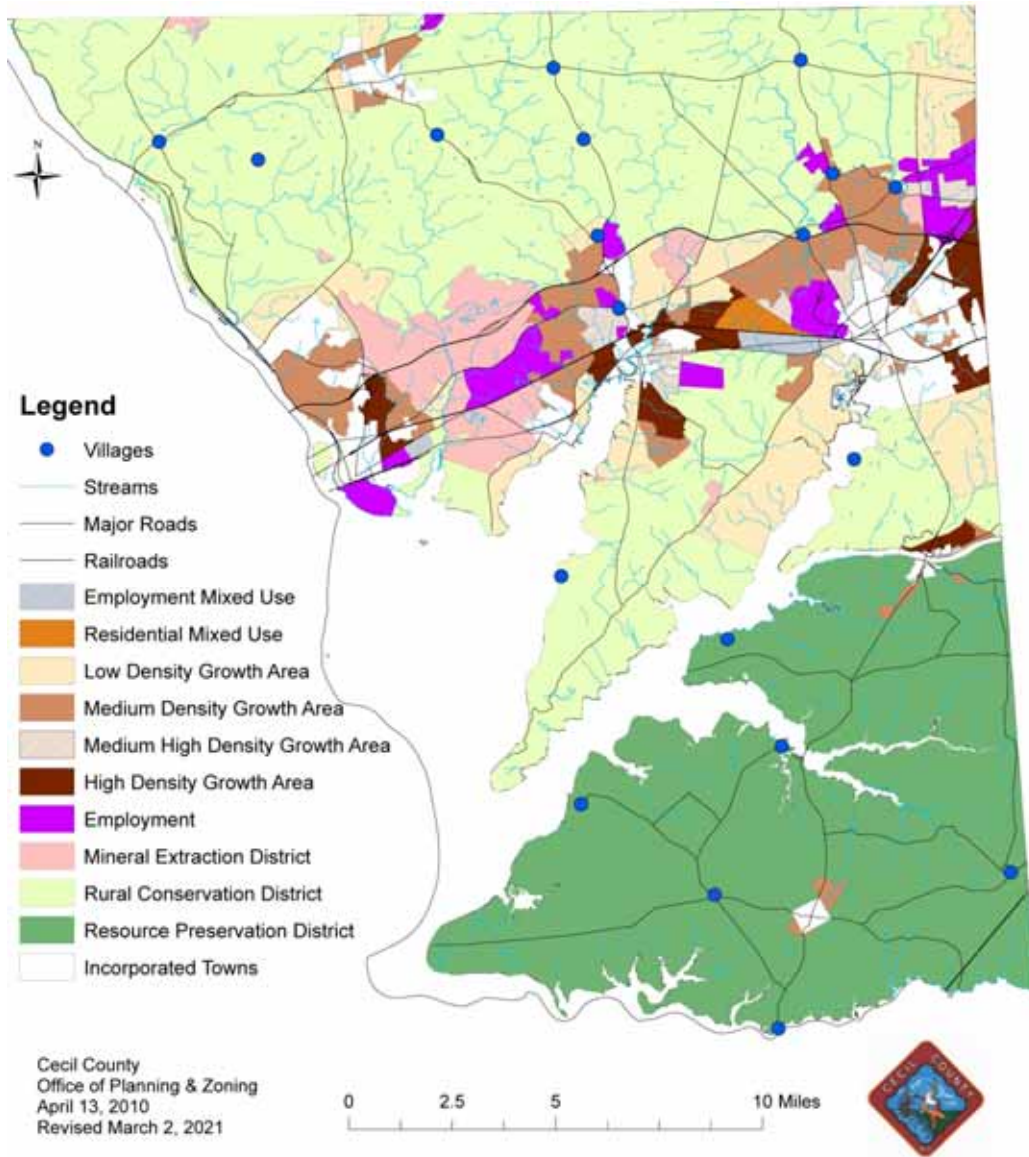
<sup>1</sup> <https://ncc2050-nccde.hub.arcgis.com/>

## 2020 Delaware Strategies for State Policies and Spending – New Castle County<sup>2</sup>



<sup>2</sup> <https://strategies.stateplanning.delaware.gov/>

## 2010 Cecil County Comprehensive Plan – Future Land Use Map<sup>3</sup>



<sup>3</sup> <https://www.ccgov.org/home/showdocument?id=3660>