

RTP APPENDIX

Sea Level Rise Impacts vs Projects

The table below lists the projects in our constrained and aspiration list which may be impacted by Sea Level Rise (SLR). This is an updated assessment of the vulnerability of planned projects, following the identification methodology pioneered in the 2011 SLR Transportation Vulnerability Assessment (www.wilmapco.org/slr).

Projects within Cecil County were overlaid with SLR scenarios developed by Towson University – which range from 2 feet, to 5 feet, to a 10 foot surge. In New Castle County, we compare Delaware Coastal Programs scenarios to the projects – 0.5 m, 1.0 m, and 1.5 m.

This should be considered a preliminary assessment of potential impacts. The scenarios in both counties are rough estimates of potential SLR impacts, which do not fully account for local conditions. Still, SLR impacts to the projects below should be considered during project development.

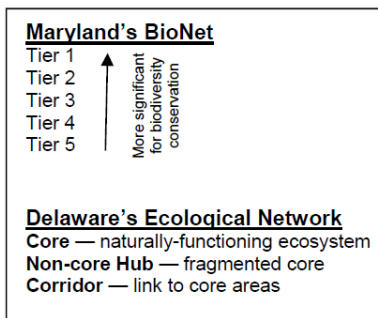
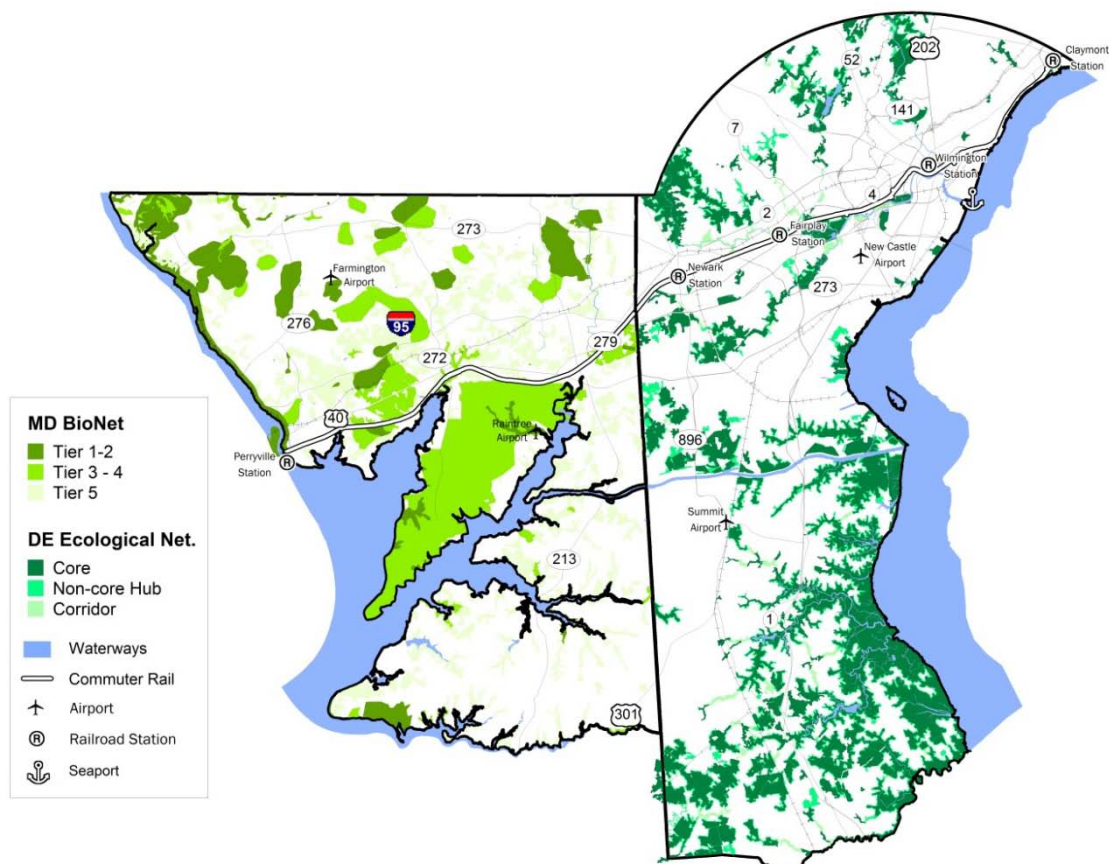
Planned Projects Vulnerable to Sea Level Rise

ID	PROJECT	LIST	IN SERVICE	SCENARIO IMPACT
1	C & D Branch Canal Trail and C&D Canal Trail to MD line	Constrained	2016	0.5 m
2	C & D Canal Trail (CCo)	Constrained	2016	5 ft
3	Christina River Bridge	Constrained	2019	0.5 m
4	City of New Castle Intersections (SR9/3rd and SR9/6th & SR9/Delaware)	Constrained	2021	0.5 m
5	Garasches Lane	Constrained	2021	0.5 m
6	I-295, Westbound from I-95 to US 13	Constrained	2017	0.5 m
7	Maryland Commuter Rail: Perryville to Elkton (MARC extension)	Constrained	2029	2 ft
8	NCC Industrial Track Greenway, Phase III	Constrained	2018	0.5 m
9	SR 1: Tybouts Corner to Roth Bridge	Constrained	2030	1.0 m
10	SR 9, River Rd. Area, Dobbinsville (viaduct)	Constrained	2021	1.0 m
11	Susquehanna River Rail Bridge Preliminary Engineering	Constrained	2020	5 ft
12	US 13: Duck Creek to SR 1	Constrained	2021	1.5 m
13	Walnut St., Front St. to 13th St. with sweep removal	Constrained	2021	1.0 m
14	Center Boulevard extended to Churchmans Rd	Aspiration	n/a	0.5 m
15	Chesapeake City Parking Plan Implementation	Aspiration	n/a	5 ft
16	Christina River Greenway	Aspiration	n/a	0.5 m
17	Churchmans Crossing FY 2005 Sidewalks & Bus Stop Improvements	Aspiration	n/a	0.5 m
18	Delaware City Plan Implementation	Aspiration	n/a	0.5 m
19	ECGW - CC (grouped for mapping purposes)	Aspiration	n/a	10 ft
20	ECGW - NCC (grouped for mapping purposes)	Aspiration	n/a	0.5 m
21	Lower Susquehanna Heritage Greenway	Aspiration	n/a	5 ft
22	North East TOD Pedestrian Improvements	Aspiration	n/a	5 ft
23	Perryville Bicycle and Pedestrian Improvements	Aspiration	n/a	5 ft
24	Port of Wilmington Truck Staging Area (exact site undetermined)	Aspiration	n/a	0.5 m
25	Route 9; Reconstruct Ferry Cutoff as 4 lanes	Aspiration	n/a	0.5 m
26	S. Walnut Street Bridge Area	Aspiration	n/a	1.0 m
27	South Wilmington Route Signage	Aspiration	n/a	0.5 m
28	SR 9, New Castle Ave - 3rd St to Heald St, Pavement Reconstuction	Aspiration	n/a	1.0 m
29	Terminal Avenue/ SR 9 Pedestrian Improvements	Aspiration	n/a	0.5 m
30	US 13: US 40 to Wilmington	Aspiration	n/a	0.5 m
31	Water St. East Extended (French St. to Front St.)	Aspiration	n/a	1.0 m
32	Water St. West: Shipley Street to West Street	Aspiration	n/a	1.5 m
33	Wilmington Traffic Calming; 12th St. Connector	Aspiration	n/a	1.5 m

Sensitive Natural Networks and Cultural and Historic Resources

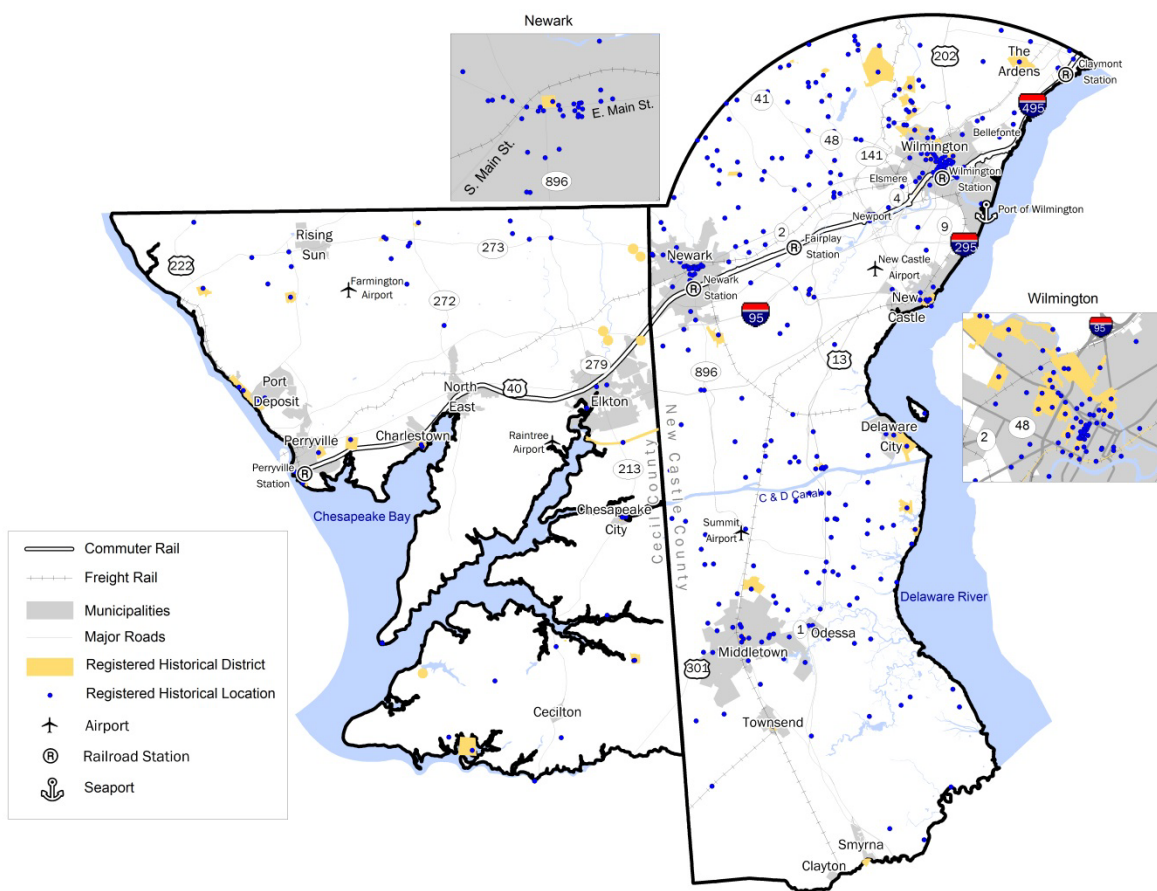
The maps in this section illustrate the places identified as sensitive natural areas and registered cultural and historic sites.

Sensitive Natural Networks¹



¹ Maryland Department of Natural Resources; Delaware Department of Natural Resources and Environmental Control

Registered Historic Places²



² Maryland Historical Trust; Delaware Division of Historical and Cultural Affairs; National Register