



DATE: JUNE 21, 2021

Interface Studio LLC

Project Update

WILMAPCO PAC



UNION STREET

Reconfiguration and Streetscape Improvement Study



TODAY'S AGENDA



1. Project Overview
2. Current Conditions
3. Visioning Process
4. Milestone Schedule

PROJECT OVERVIEW

Purpose, Limits, Previous Efforts, Current Conditions, Goals



Union Street Outreach

Targets:

Stakeholders

- City and State elected officials
- Businesses & property Owners
- Neighborhood groups
- Residents



Union Street Advisory Committee Members

Advisory Committee Members:

- Tricia Arndt, Office of State Planning
- Sarah Lester, Westside Grows Together
- Adele Meehan, 7th District Neighborhood Planning Council
- Jackie Castaneda, Westside Grows Together
- Nukun, Bangkok House
- Marina Liapis, 3 Stars
- Christa-Bell Josiah, Christa-Bells
- Jack Michael, Jack Michael Hair Salon
- Julie Mundis, Telo Massage
- Robin Robino/ Andrea Wakefield, Mrs. Robinos
- Tom Ogden, Mayor's Office

Advisory Committee Members:

- Donna Gooden, Woodlawn Trustees
- Brian Raughley, Dead Presidents
- Richi Ayala/ Luis Palaez, El Toro/ Papa's
- Jo Pressey, Salon Ollae
- Islanda & Maria Finamore, Sheila's Dreams
- John Constantinou, Walter's Steakhouse
- Tony Latina, Corleto Latino Funeral Home
- Jim Ursomarso, Union Park Auto
- Francesco Vattilana, Union Park Auto
- Dino Thompson, Dino's Ice Cream
- Frank Pagliaro, Frank's Wines
- Susan Collins, Little Italy Neighborhood

Advisory Committee Members (Elected Officials):

- Sen. Sarah McBride
- Sen. S. Elizabeth Lockman
- Rep. Sherry Dorsey Walker
- Rep. Gerald Brady
- Rep. John Mitchell
- Bregetta Fields, City Council
- Yolanda McCoy, City Council
- Christofer Johnson, City Council
- Hon. Michael Purzycki, Mayor



Project Scope of Work

- Community Driven Reconfiguration and Streetscape Concept Study to develop alternatives to improve Union Street's aesthetics and transportation configuration.
- This project is focused on the use of the Public Right of Way and its connections to the overall transportation network.



WILMAPCO
Wilmington Area Planning Council



Interface Studio LLC

Project Goals

Making a **Great Union Street**

- Inviting to all users
- Urban design to respect all transportation modes and provide safe routes
- Beautification
- Destination Street
- Encourage economic revitalization

Each block has a unique personality that needs to be interconnected through common themes and transportation modes



WILMAPCO
Wilmington Area Planning Council



_Interface Studio LLC



Project Overview

Project Area

- Sycamore St. – Pennsylvania Ave.
- ~ 80' right-of-way / ~ 55' curb to curb

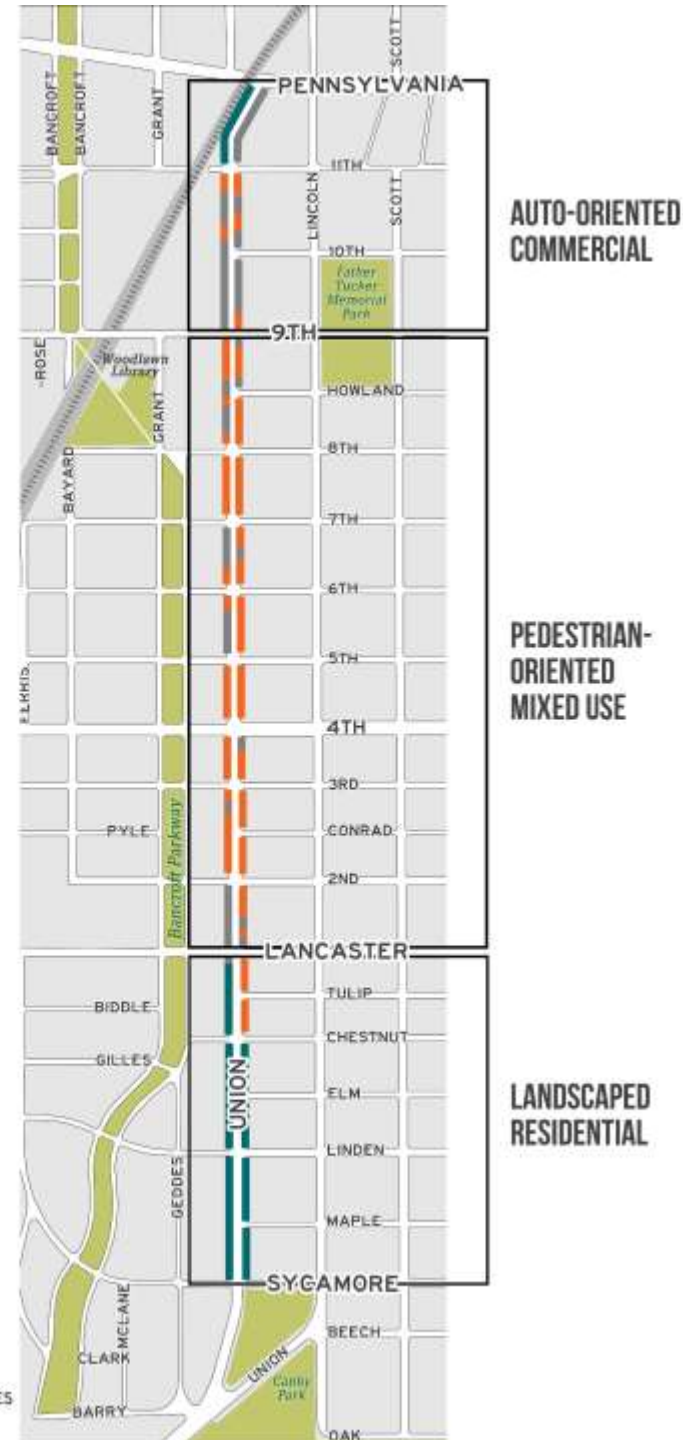
Current Corridor Configuration

- One Way Southbound with 2 travel lanes
- Southbound bike lane on the left side transitions to sharrows at Maple Street
- 8 bus stops
- Varying sidewalk widths
- On-street parking (parallel and diagonal)
- Overhead utilities and utility cabinets
- Planters, signs, benches, garbage cans



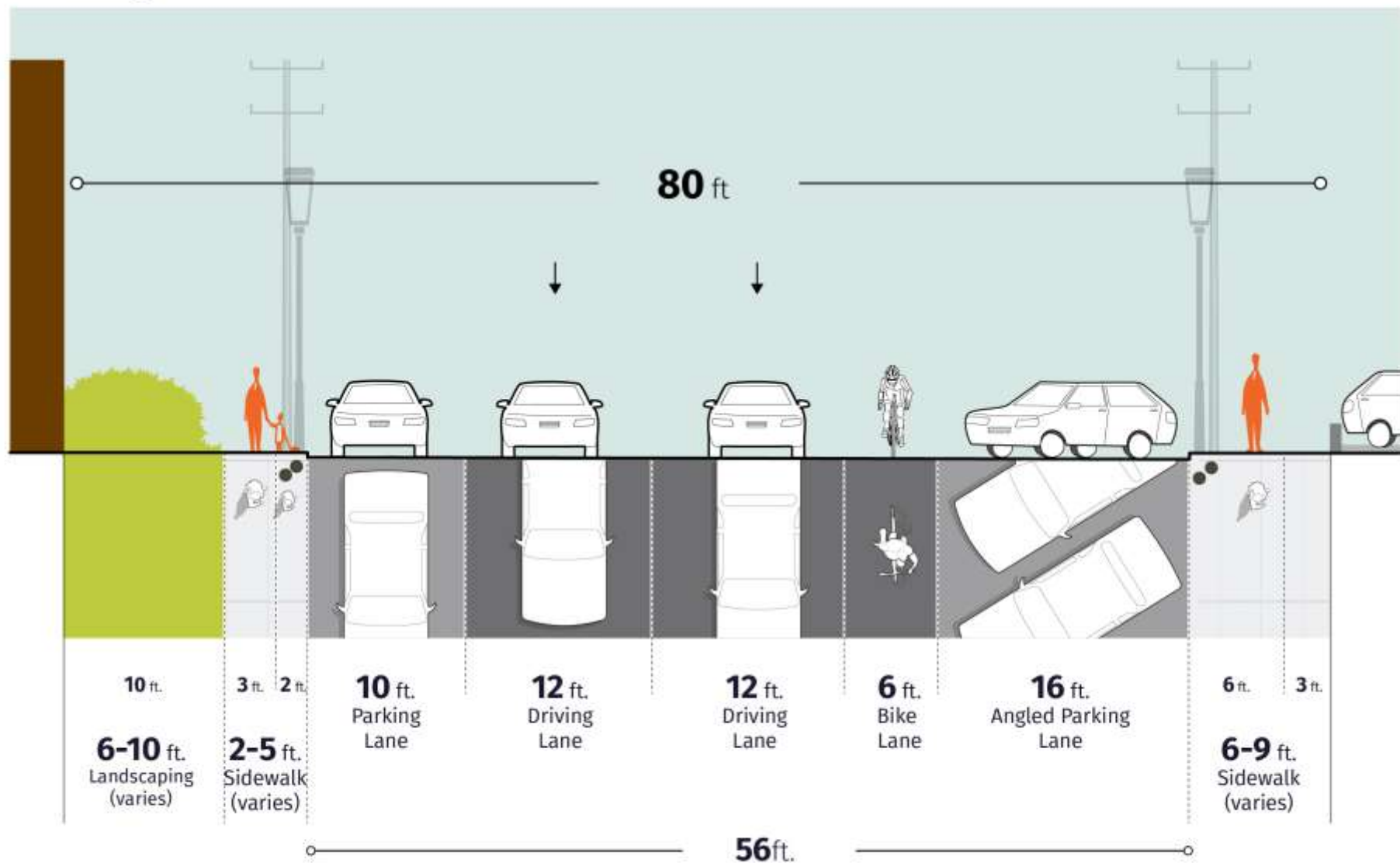
FRONTAGES

- ENTRANCE
- LANDSCAPE
- PARKING



Union Street - Auto-Oriented Commercial (Pennsylvania Avenue - 9th Street)

Existing



Project Overview

Auto-Oriented Commercial Pennsylvania Avenue – 9th Street

- On-street parking mix of parallel and back-in angled parking
- Some Entrances
- Signalized crosswalk with curb extensions at 9th street
- Wider sidewalks

FRONTAGES

- ENTRANCE
- LANDSCAPE
- PARKING



Auto – Oriented Commercial

Pennsylvania Avenue – 9th Street



Project Overview

Pedestrian-Oriented Mixed Use

9th Street – Lancaster Avenue

- On-street parking mix of parallel and back-in angled
- Variety of retail/ commercial/ mixed use
- Wider sidewalks
- Many entrances
- Signalized crosswalk with curb extensions at 8th Street, 7th Street
- Signalized crosswalk at 4th Street, 2nd Street, and Lancaster Avenue
- Fire Station on 3rd Street



FRONTAGES

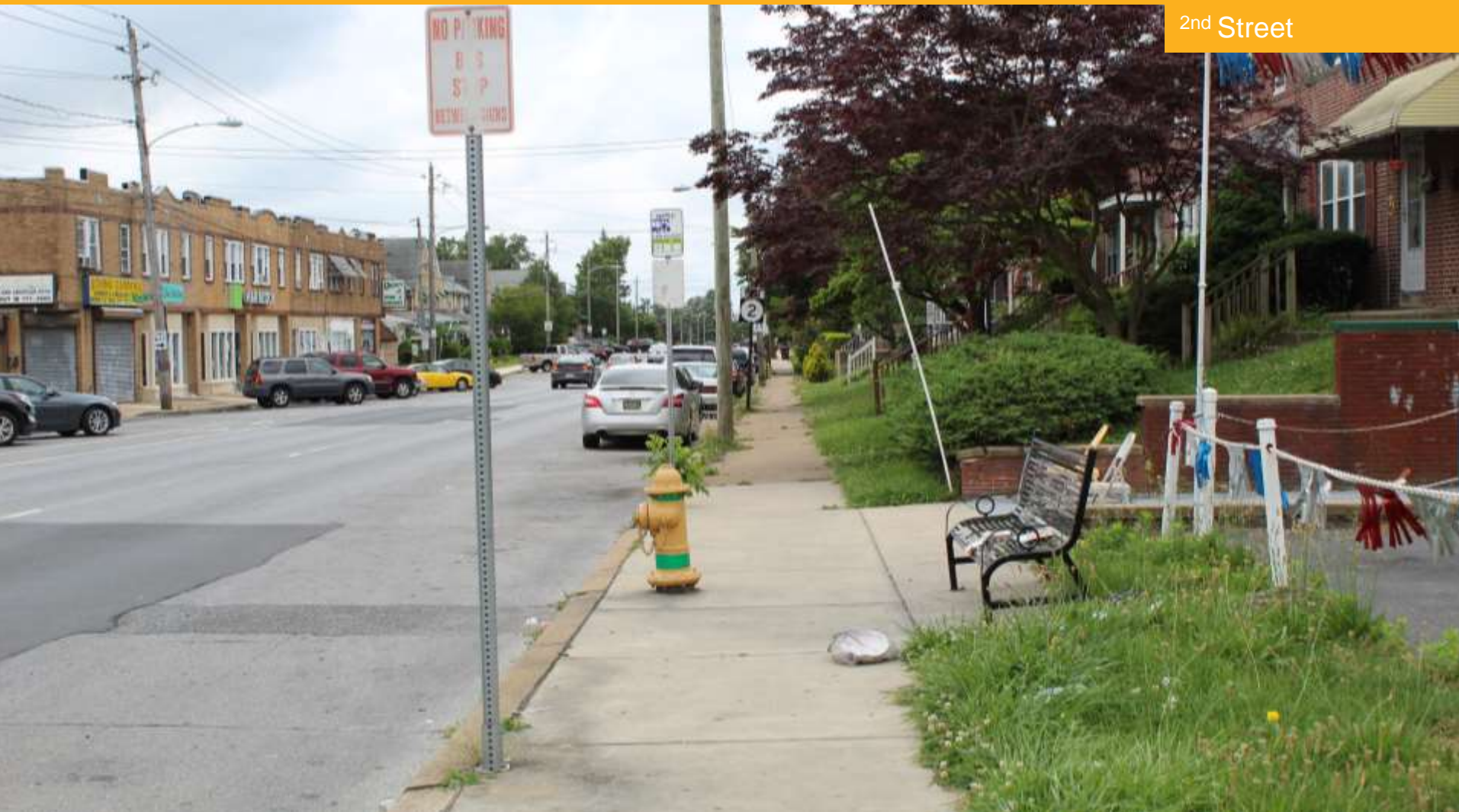
- ENTRANCE
- LANDSCAPE
- PARKING



Pedestrian – Oriented Mixed Use

9th Street – Lancaster Avenue

2nd Street



Interface Studio LLC

Project Overview

Landscaped Residential

Lancaster Avenue – Sycamore Street

- Mostly residential
- On-street parking mix of parallel and back-in angled
- Narrower sidewalks
- Signalized crosswalk at Linden Street and Maple Street

FRONTAGES

- ENTRANCE
- LANDSCAPE
- PARKING



Landscaped Residential

Lancaster Avenue – Sycamore Street

Maple Street



_Interface Studio LLC

Issues and Opportunities

Multi-Modal Needs



Pedestrians

- Widen sidewalks
- Gathering spaces to support businesses and livability
- Crossing safety
- ADA upgrades
- Greenery/ Street trees



Issues and Opportunities

Multi-Modal Needs



Bicycles

- Network connectivity
- Bike parking
- Explore two-way facilities
- On-street vs. Separated



Source: Reliance Foundry

Issues and Opportunities

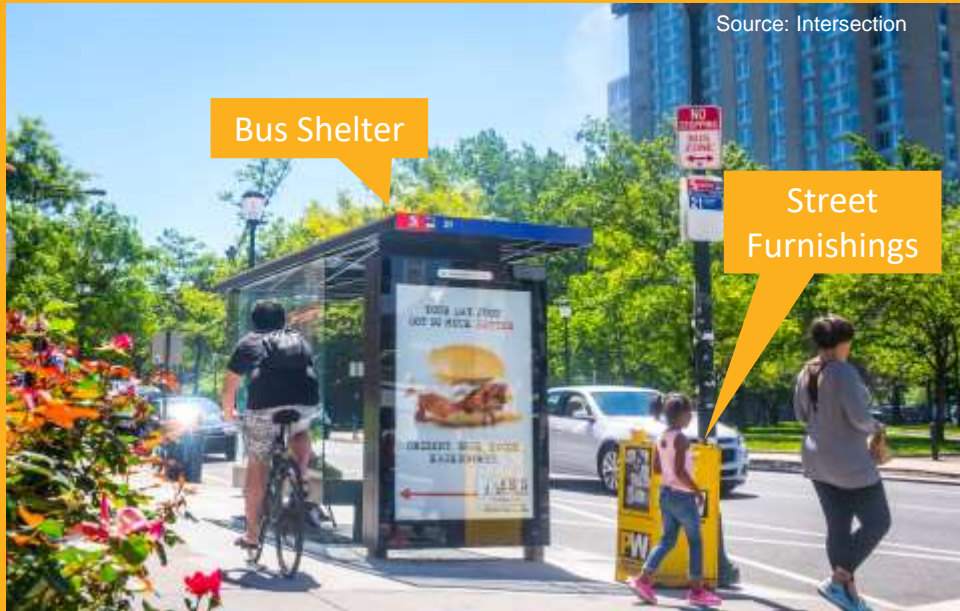
Multi-Modal Needs



Transit

- Transit amenities
- Maintain service times (floating bus islands)

Source: Intersection



Floating
Bus Island



Source: NACTO

WILMAPCO
Wilmington Area Planning Council



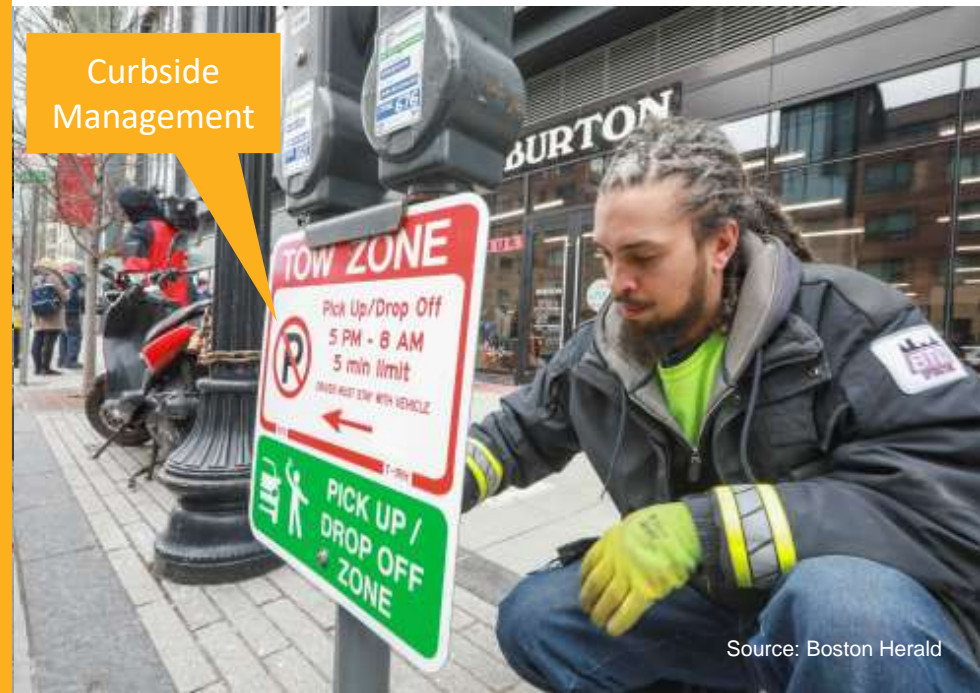
_Interface Studio LLC

Issues and Opportunities Multi-Modal Needs



Personal Vehicles

- Traffic calming/Speeding
- Emergency evacuation route/ Flooding @ PA Ave
- On-street parking

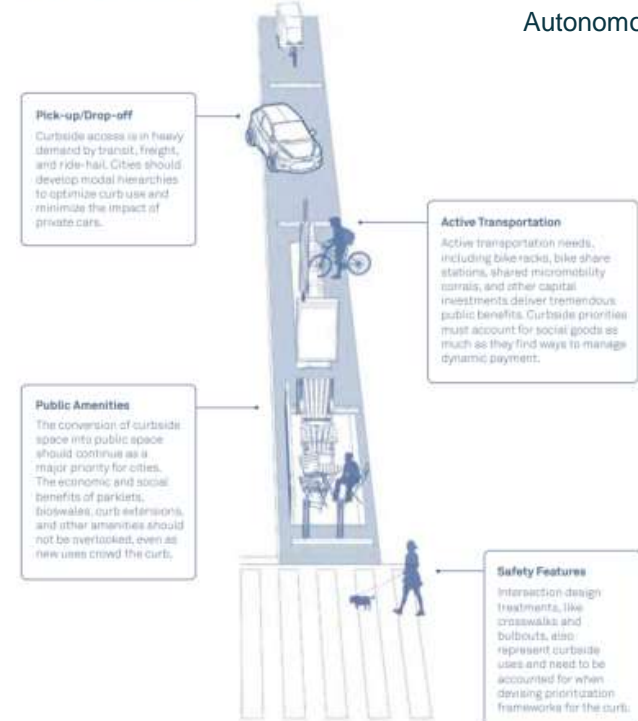


Issues and Opportunities Multi-Modal Needs

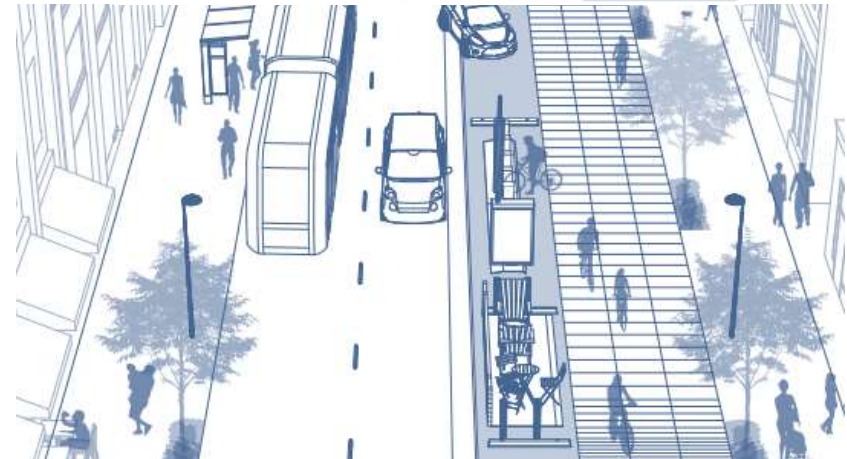
Flex Zone / Curb Side Management

- Parklettes - Public gathering spaces / Business Space for outdoor dining and retail
- Active Transportation Parking/Docking
- Short term parking: Uber, Loading zones
- EV Charging

The Flex Zone



Source: NACTO Blueprint for
Autonomous Urbanism



Issues and Opportunities

Multi-Modal Needs

Placemaking / Aesthetics

- Pedestrian Amenities
- Landscaping / Rain Gardens/ Greenery
- Aerial Utilities
- Lighting



VISIONING

COMMUNITY INSPIRED COMMUNITY DRIVEN



Building from Existing Community Plans

The visioning work has already started.

- West Side Grows Together Neighborhood Revitalization Plan
- Better Block Demonstration / Union Street Rapid Reconfiguration
- Wilmington 2028: A Comprehensive Plan for Our City and Communities
- Wilmington Bike Plan (Moving Us forward: A Plan for Biking in the City of Wilmington, 2019)



West Side Grows Together Neighborhood Revitalization Plan



2016 Better Block Event
(Image credit: Sarah Lester, West Side Grows Together)

What we heard from the Comp Plan Outreach

WHAT IS A GREAT STREET?

Activity from **Wilmington**
2028

TOP CHOICES FOR UNION STREET:

Downtown business district

Pedestrian-scale lighting
Tree canopy & landscaping
Wide sidewalks
Ground floor retail and restaurants



Neighborhood commercial

Public art
Temporary closure for events



Neighborhood commercial

"Parklet" uses parking lane to expand pedestrian space



DESIRED CHARACTERISTICS FOR UNION STREET:

fun
beautifying
dynamic
interesting
creative
festive
walkable
hybrid
accessible
multimodal
attractive
inviting
people-oriented

Break Out Room Discussions

GROUP #

**Let's talk about Union Street
today**

What is working well? What could be improved with the redesign?

stickies



**Let's talk about Union Street
tomorrow**

What's one thing you wish you could do on Union Street that you can't do now? What should Union Street look like in 10 years?

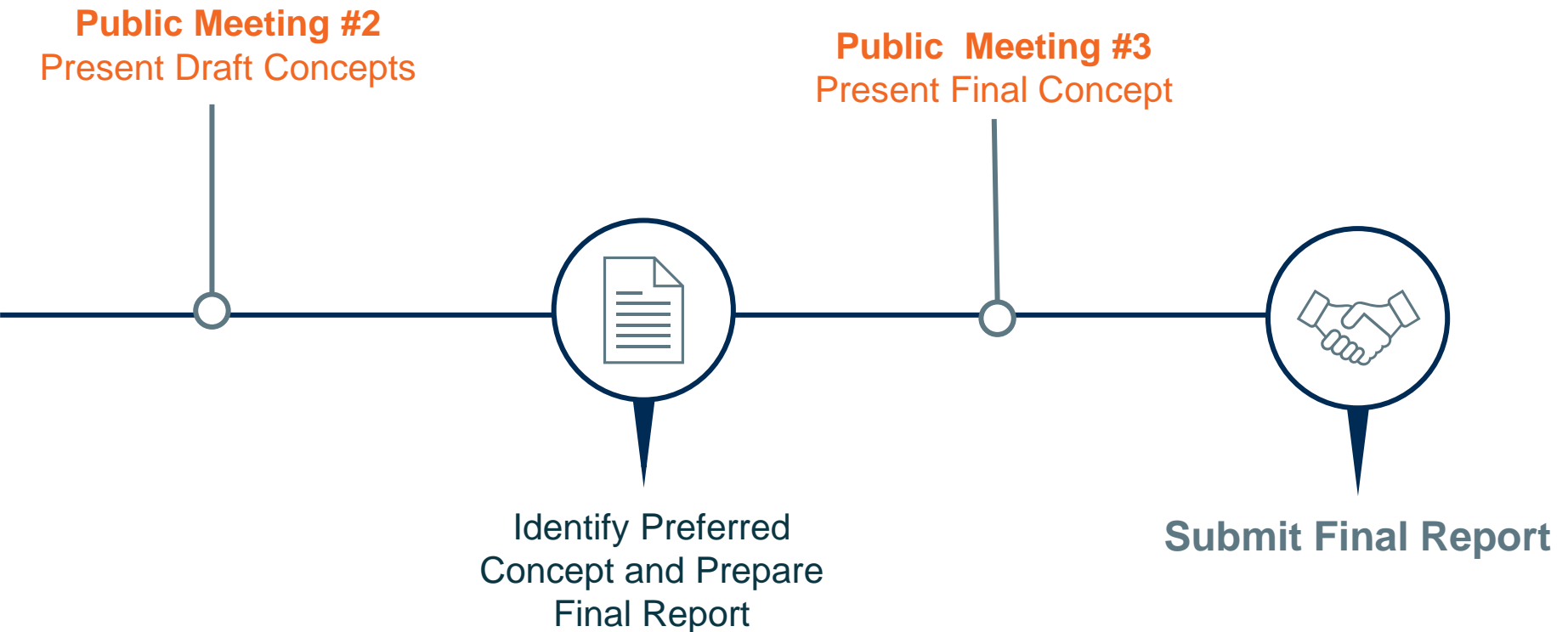
SCHEDULE AND MILESTONES



Schedule and Milestones



Schedule and Milestones



Any last questions?

Brief Online Visioning Activities at the Website Below!



Contact Information:

Dave Gula

T: 302.737.6205 x122

E: Dgula@wilmapco.com

Project Website:

www.wilmapco.org/unionstreet

