

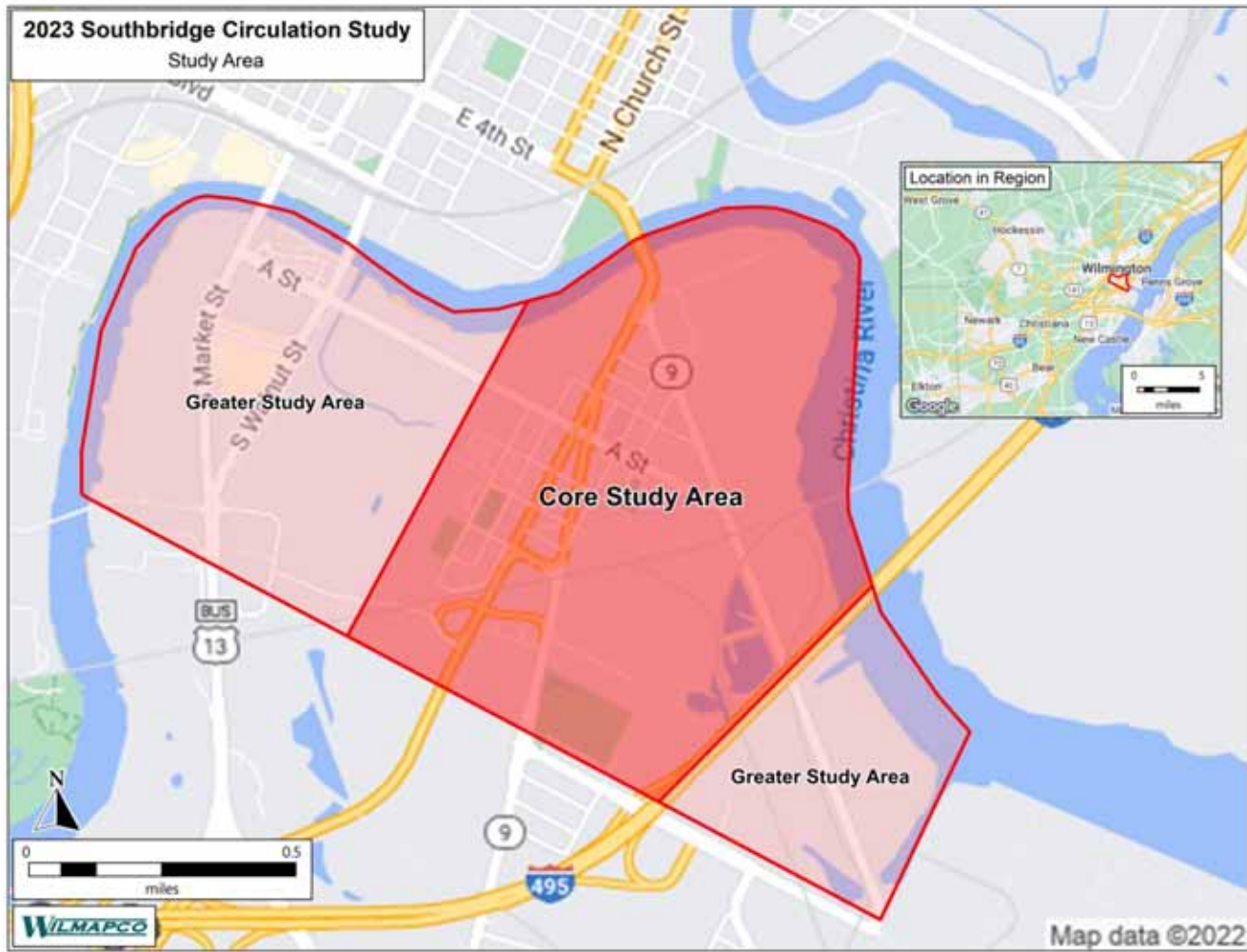
# WILMAPCO



[www.wilmapco.org/Southbridge](http://www.wilmapco.org/Southbridge)

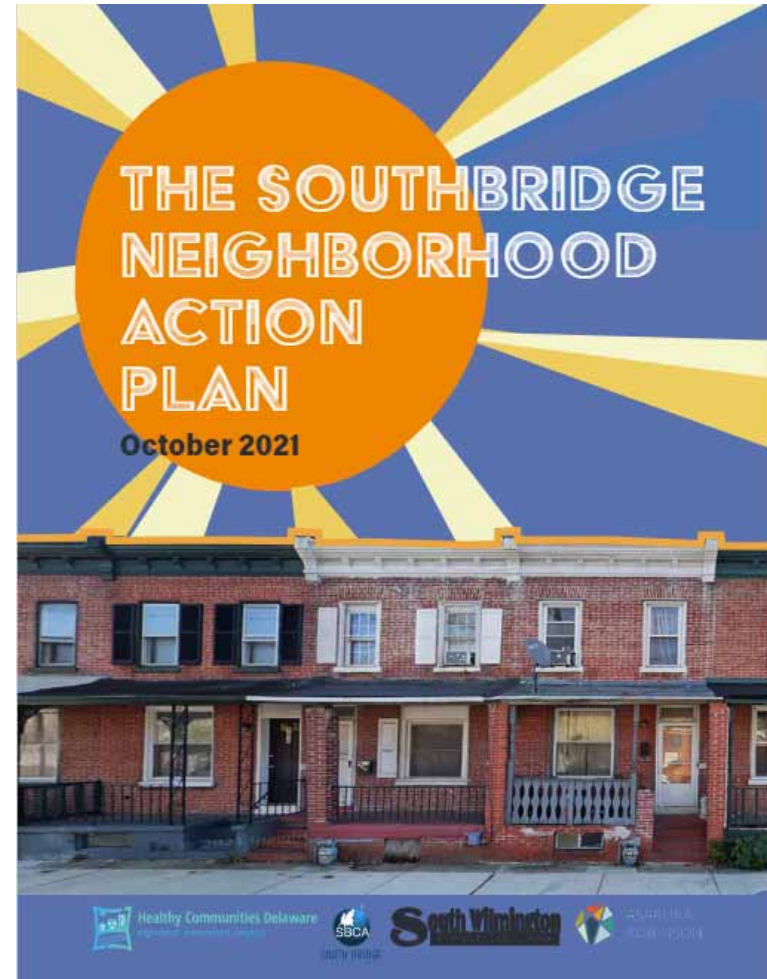
**MM** CENTURY  
ENGINEERING  
A Kleinfelder Company

**RK&K**



# Foundation

- **South Neighborhood Action Plan (SNAP)**
- 2008 Southbridge Circulation Study
- Statewide Truck Parking Study
- Port of Wilmington Traffic Circulation Study
- Route 9 Master Plan



# Schedule



TASK	2022							2023						
	May	June	July	Aug	Sept	Oct	Nov	Dec	Jan	Feb	Mar	Apr	May	June
Identify Issues, Opportunities & Constraints	■	■												
Community Visioning			■	■	■	i								
Define Assumptions and Alternative Projects							■	■	■	■	i			
Select Preferred Alternatives and Prepare Final Report												■	i	i
Public Meeting	i													

## Project Management Committee



## Project Advisory Committee





# Community Ambassadors

- Two paid, dedicated representatives from the Southbridge Civic Association
- Local, experienced door-to-door survey taker





## Four Focus Areas including (but not limited to)

### Traffic/Road Diets

- US 13 (Heald St)
- SR 9 (New Castle Ave)

### Trucks/Freight

- Slow
- Reduce
- Reroute

### Bike/Pedestrian

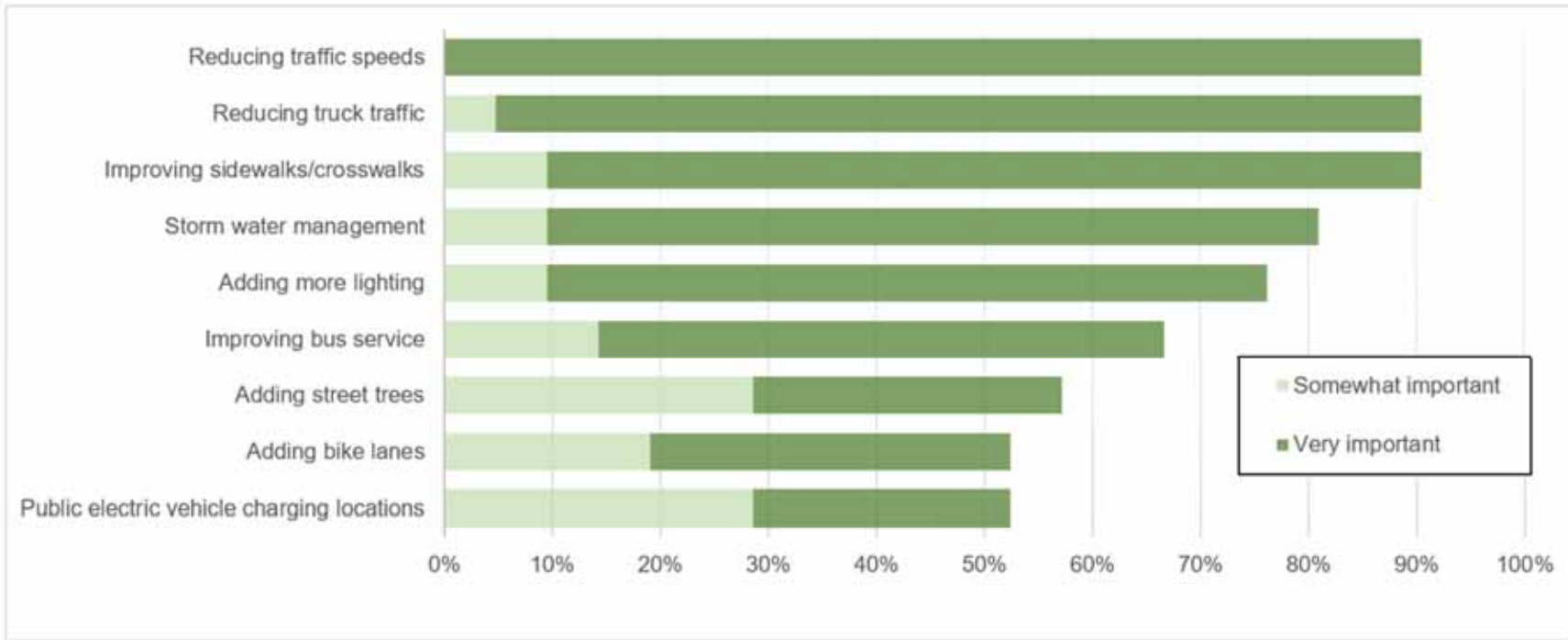
- Heald Street Bridge Over Christina River
- Eden Park

### Transit

- Connectivity to
  - Jobs
  - Health
  - Food



## How Important Are Each of the Following. . . (Southbridge residents only)





# Workshop 1



## Concerns Raised



Lighting



Truck parking  
and truck  
traffic



Speeding



Flooding



Bus  
service



Sidewalks  
and  
crosswalks



# Youth Outreach



## Concerns Raised



Lighting



More trees  
and grass



Speeding



Bike  
infrastructure



Bus  
service



Sidewalks  
and  
crosswalks

## Quick Action Memo: Sent to City of Wilmington



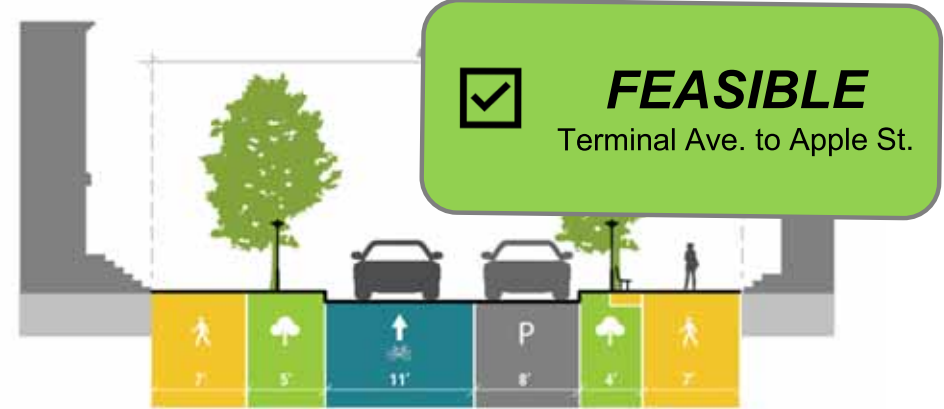
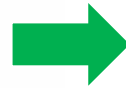
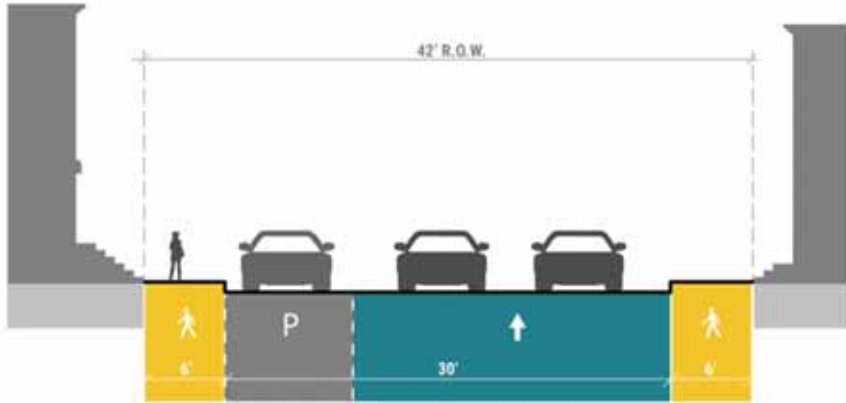
- Signing and Striping Recommendations
- Install and enforce “No Truck Parking” signs
- Wayfinding and truck routing signing
- Speed Limit signing and regulatory signs
- Signing and pavement markings to deter speeding
- Signing for pedestrian/children awareness
- Signal timing revisions



# Lane Reduction on New Castle Ave./Heald St.

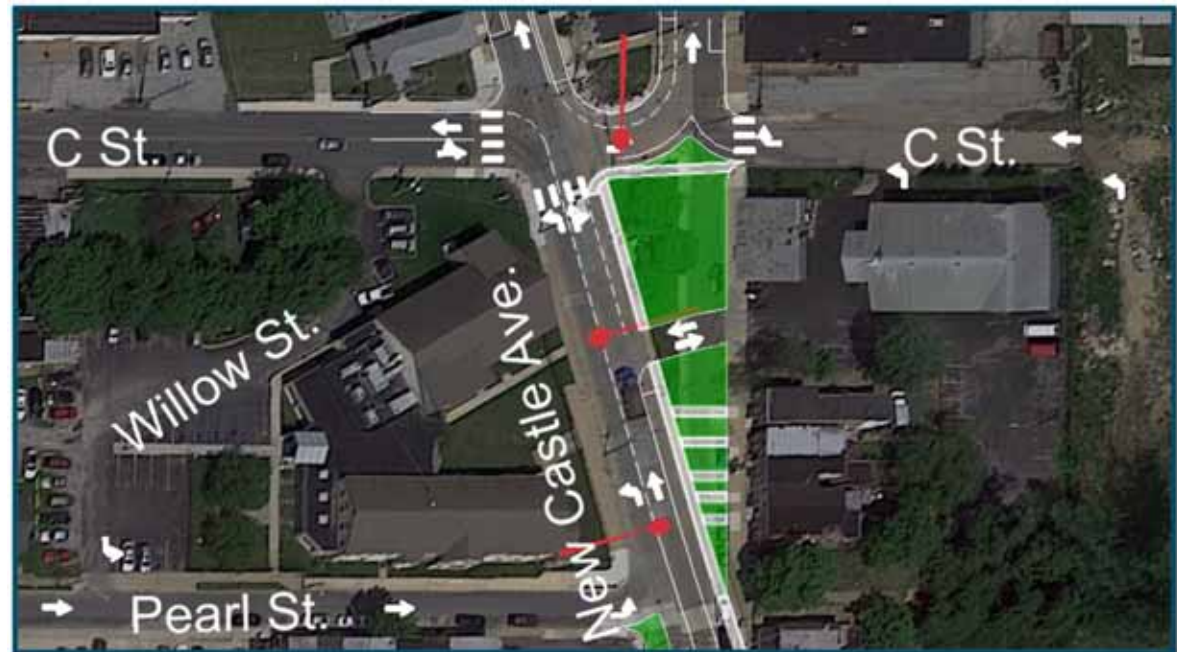


**New Castle Ave. Concept:**  
*Southbridge Neighborhood Action Plan, 2021*

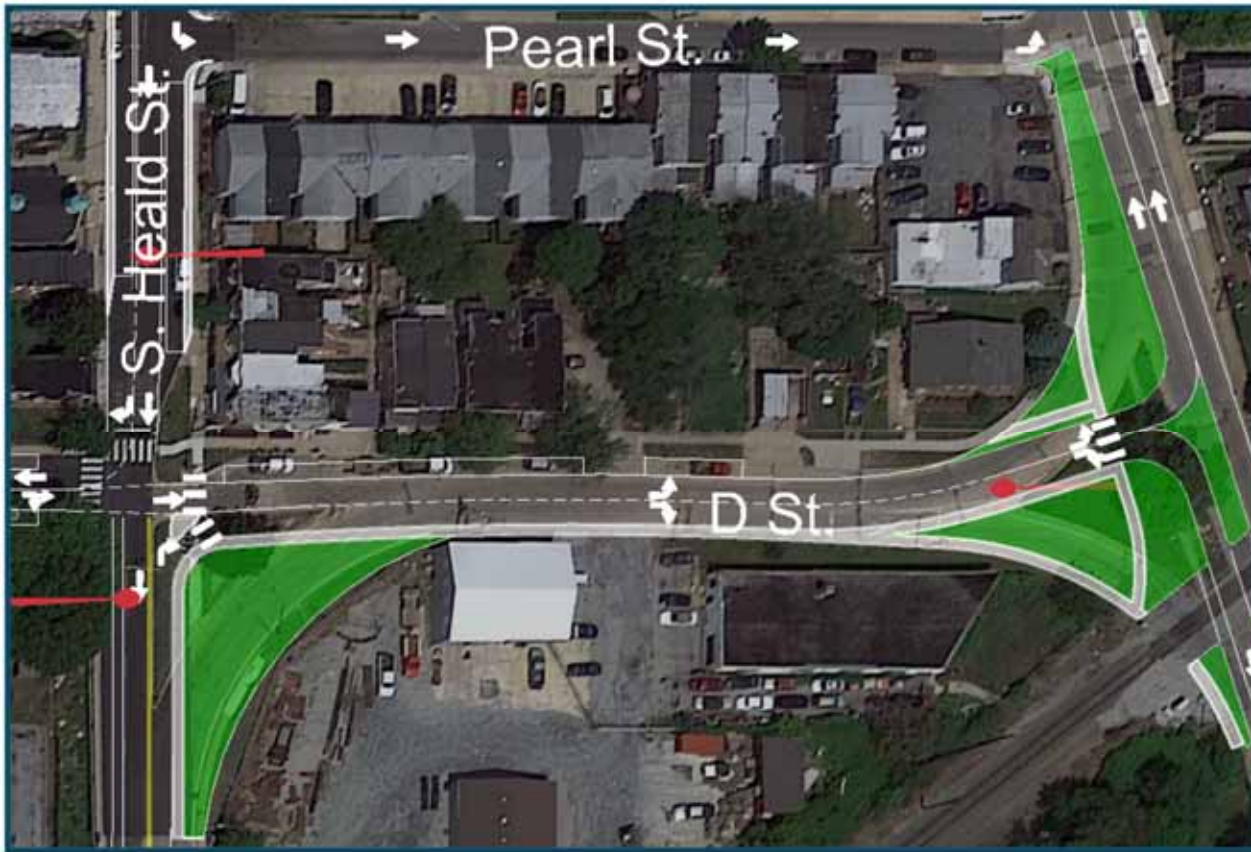




## General Concepts – C Street

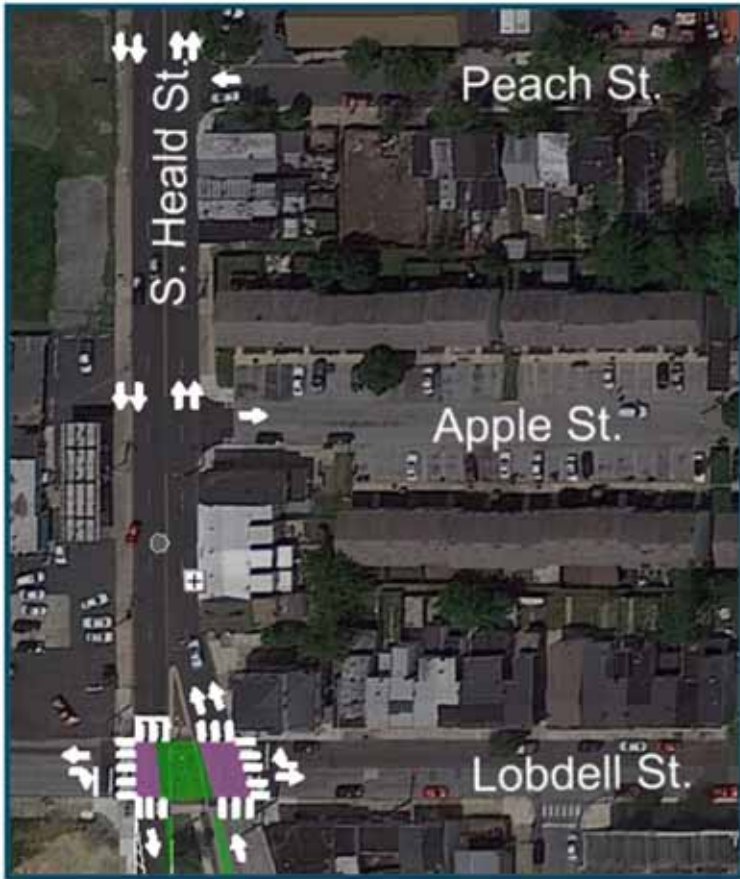


## General Concepts – Northbound Approach





## General Concepts – Southbound Approach



## General Concepts – Truck Routing



Very Rough Draft Concepts

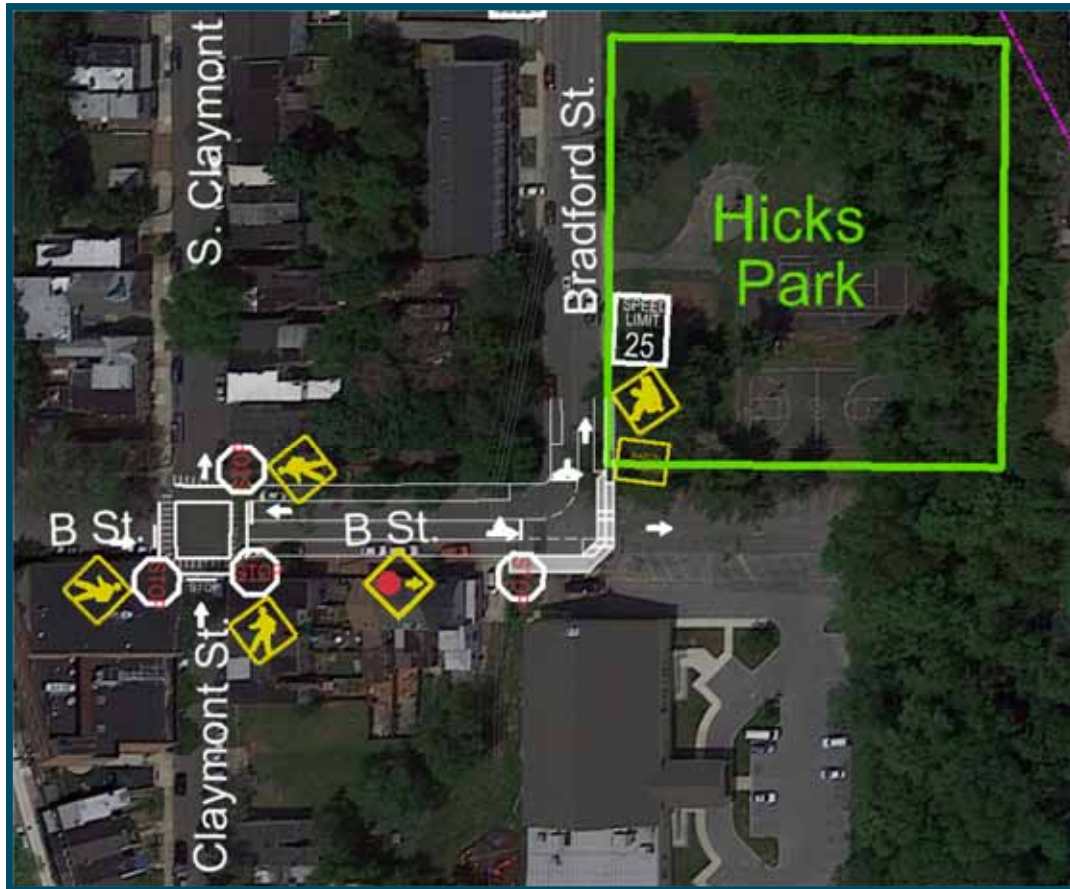


## General Concept: Interim Terminal Avenue Improvement





## General Concepts – Park Access



# General Concepts – Park Access



# Next Steps

- Survey 2 (door-to-door, Open Streets, online)
- Bus connectivity examination
- Truck diversion examination
- Draft Action Plan





[wilmaco.org/Southbridge](http://wilmaco.org/Southbridge)

