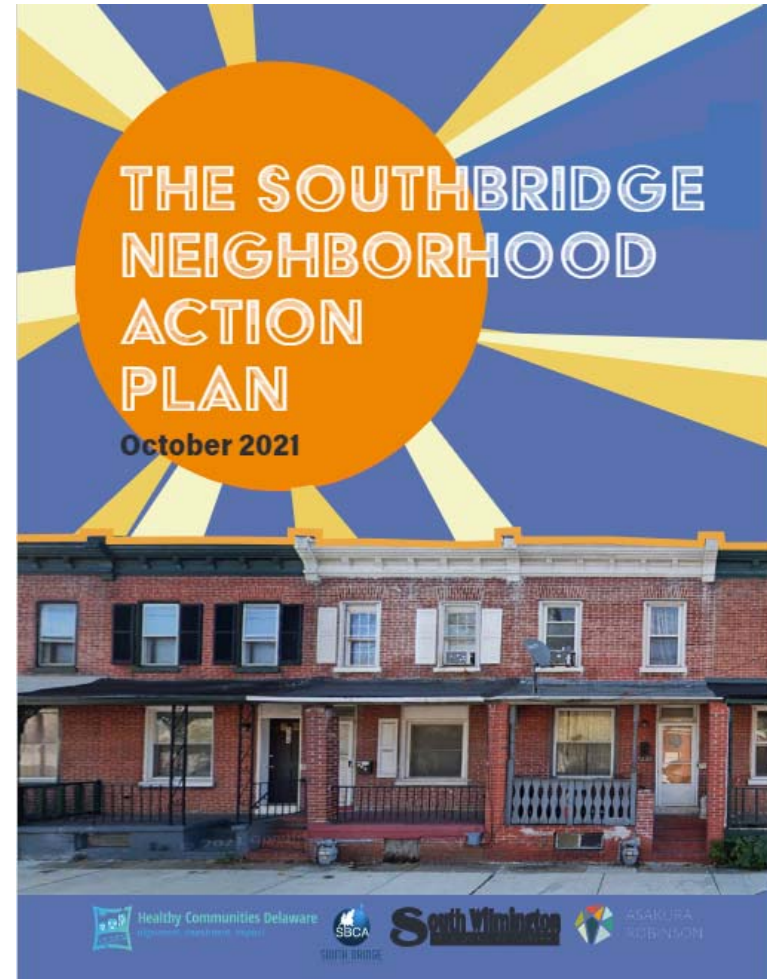


# Foundation

- **South Neighborhood Action Plan (SNAP)**
- 2008 Southbridge Circulation Study
- Statewide Truck Parking Study
- Port of Wilmington Traffic Circulation Study
- Route 9 Master Plan





# Four Focus Areas including (but not limited to)



## Traffic/Road Diets

- US 13 (Heald St)
- SR 9 (New Castle Ave)

## Trucks/Freight

- Slow
- Reduce
- Reroute

## Bike/Pedestrian

- Heald Street Bridge Over Christina River
- Eden Park

## Transit

- Connectivity to
  - Jobs
  - Health
  - Food

## Project Management Committee



## Project Advisory Committee



# Community Ambassadors

- Two paid, dedicated representatives from the Southbridge Civic Association
- Local, experienced door-to-door survey taker



# Community Engagement



## Part 1: Confirming Vision/Needs

- Survey
- Workshop
- Youth focus group
- Community Health Fair



# Community Engagement

## Part 2: Selecting Alternatives

- Survey (door-to-door; 93 responses)
- Workshop
- Youth focus group
- Open Streets event



# Community Engagement

## Part 3: Final Plan Review

- Workshop
- Workshop Replay /  
Civic Association Meeting



# Quick Action Memo

## Signing and Striping Recommendations

- “No Truck Parking” signs
- Wayfinding and truck routing signing
- Speed Limit signing and regulatory signs
- Signing and pavement markings to deter speeding
- Signing for pedestrian/children awareness

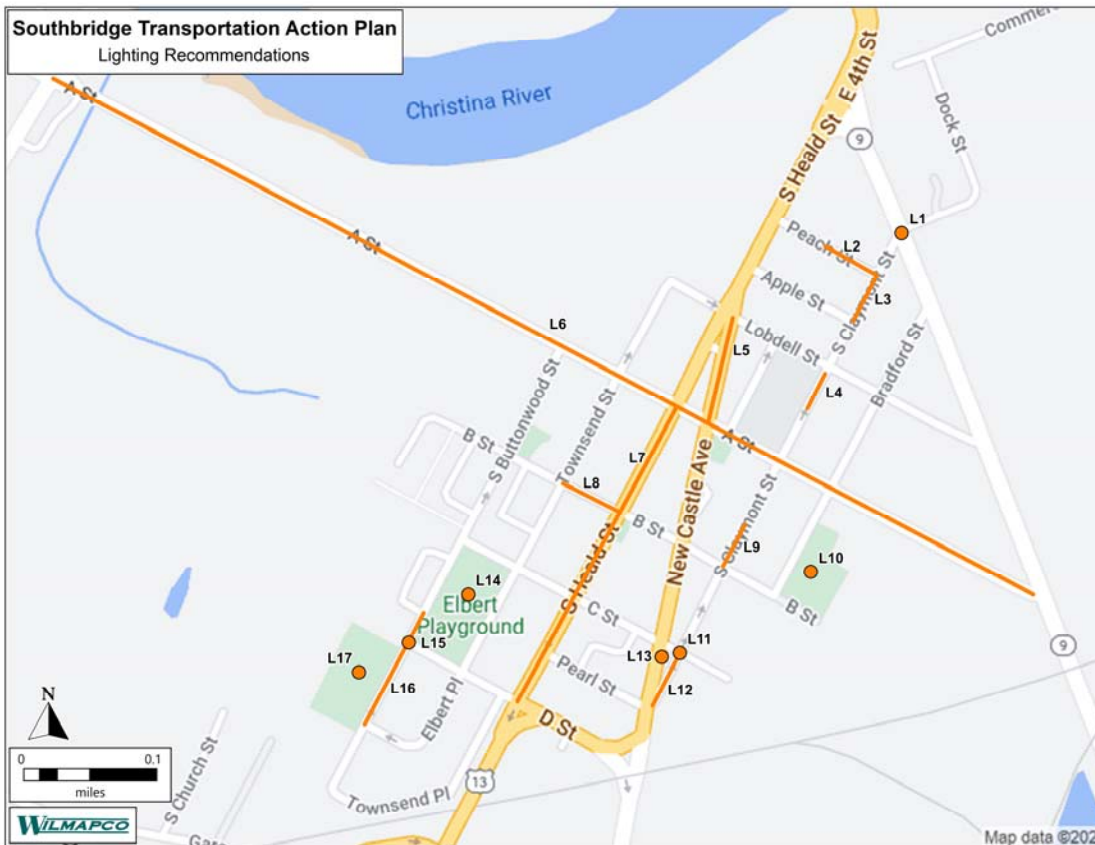
## Signal timing revisions



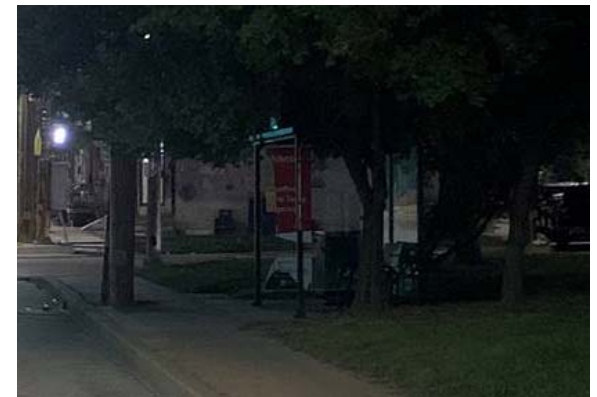
**30 mph +**  
**Claymont St.**  
(between B & C Streets)  
**49 vehicles/day\***

\*StreetLight 2021

# Lighting



5 of 17 issues resolved



Non-functional Bus Shelter Light  
Reported Aug. 2; Fixed Sept. 21

## Southbridge Transportation Action Plan Recommendations

**DRAFT**



**Total Cost  
\$15m - \$20m**

### Mapped Recommendations

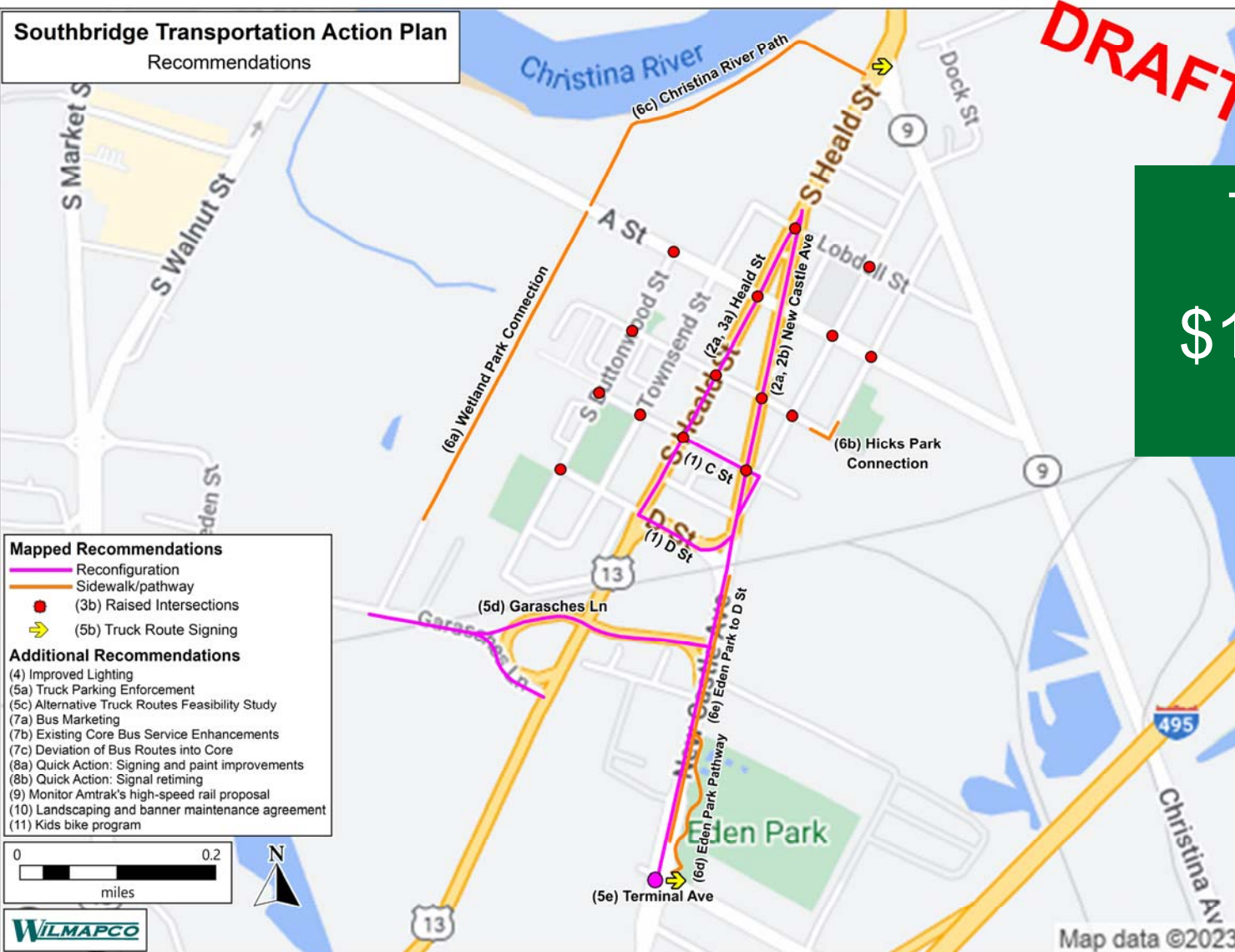
- Reconfiguration
- Sidewalk/pathway
- (3b) Raised Intersections
- ➔ (5b) Truck Route Signing

### Additional Recommendations

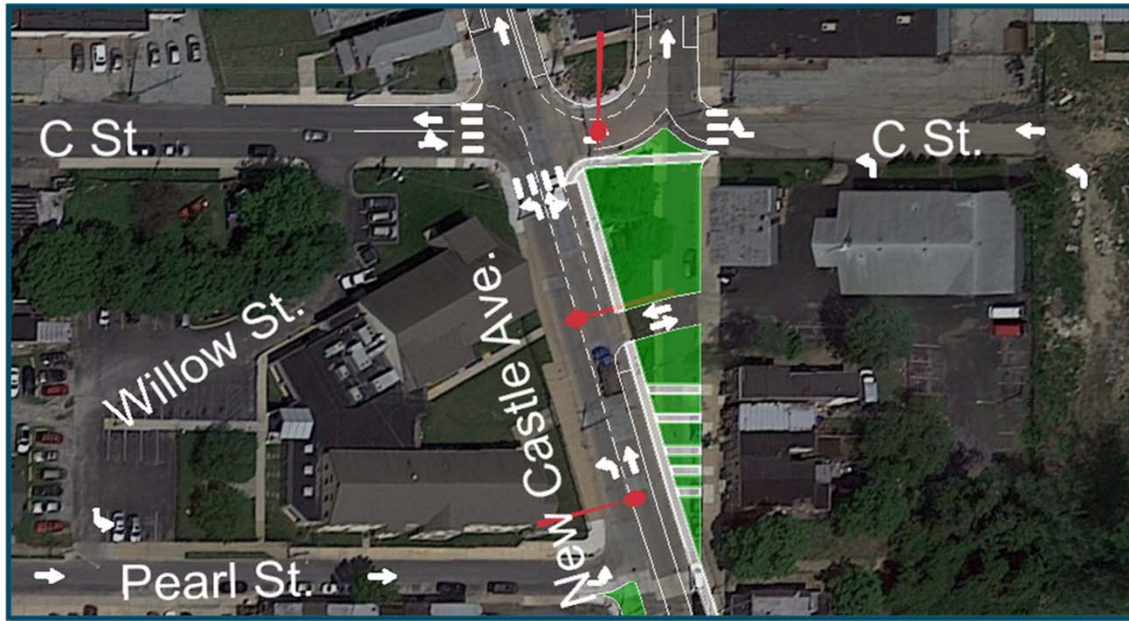
- (4) Improved Lighting
- (5a) Truck Parking Enforcement
- (5c) Alternative Truck Routes Feasibility Study
- (7a) Bus Marketing
- (7b) Existing Core Bus Service Enhancements
- (7c) Deviation of Bus Routes into Core
- (8a) Quick Action: Signing and paint improvements
- (8b) Quick Action: Signal retiming
- (9) Monitor Amtrak's high-speed rail proposal
- (10) Landscaping and banner maintenance agreement
- (11) Kids bike program



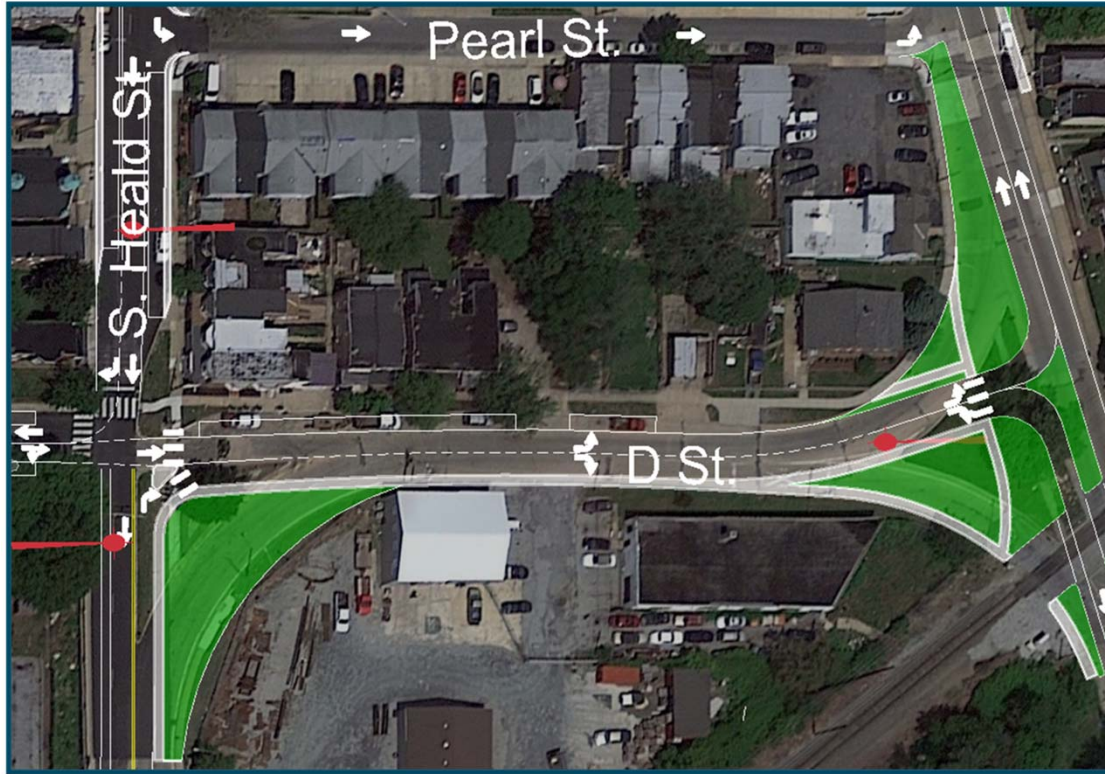
**WILMAPCO**



# Example: C Street and D Street Circulation



## Example: C Street and D Street Circulation



70% Support



## Existing Typical Section

New Castle Ave, B Street to C Street



Sidewalk
Parking / Bus Pull Over Lane
<b>Travel Lane</b>
<b>Travel Lane</b>
Sidewalk

## Example Concept Typical Section, Full Build, *Preferred Alternative*

New Castle Ave, B Street to C Street  
*Example: not to scale*



Parking / Bus Pull Over Lane
<b>Single Travel Lane</b>

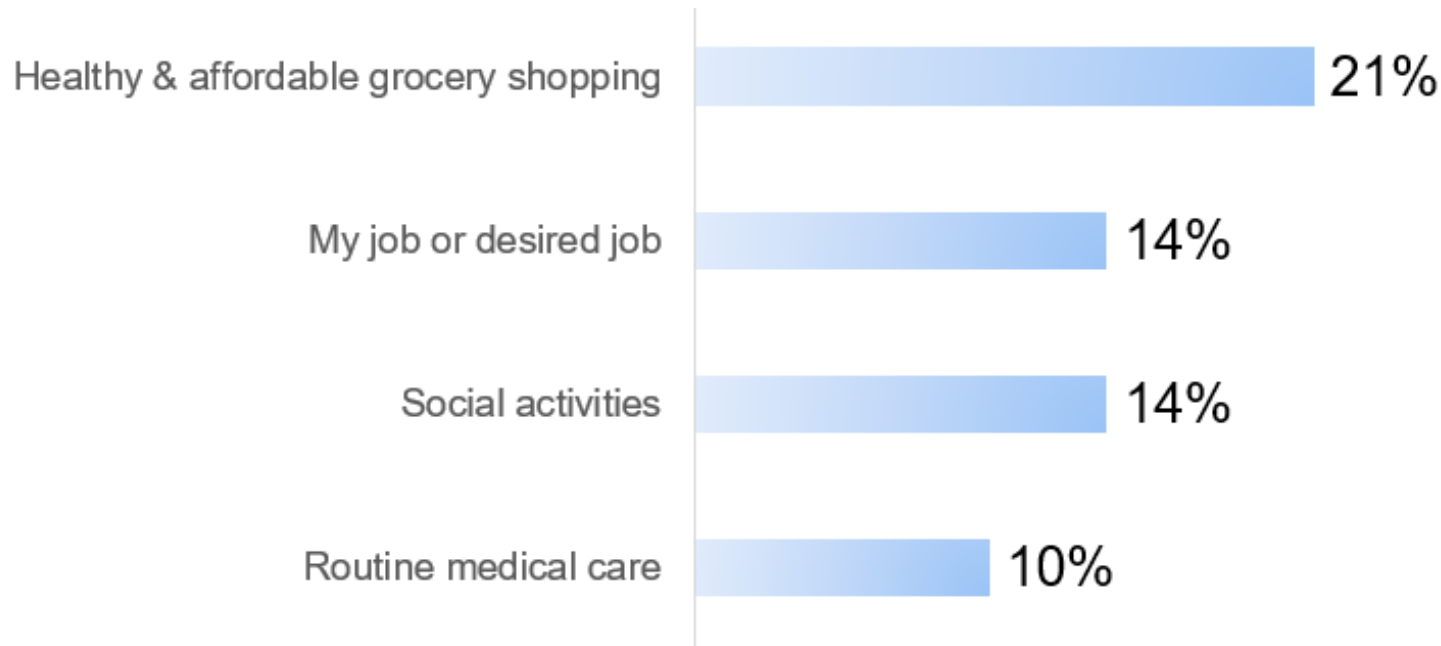
**Raised  
Intersection**  
87% support

**Raised  
Intersection**  
87% support

More lighting, beautification\*, wider sidewalks\*\* – 38, 33, 32 votes

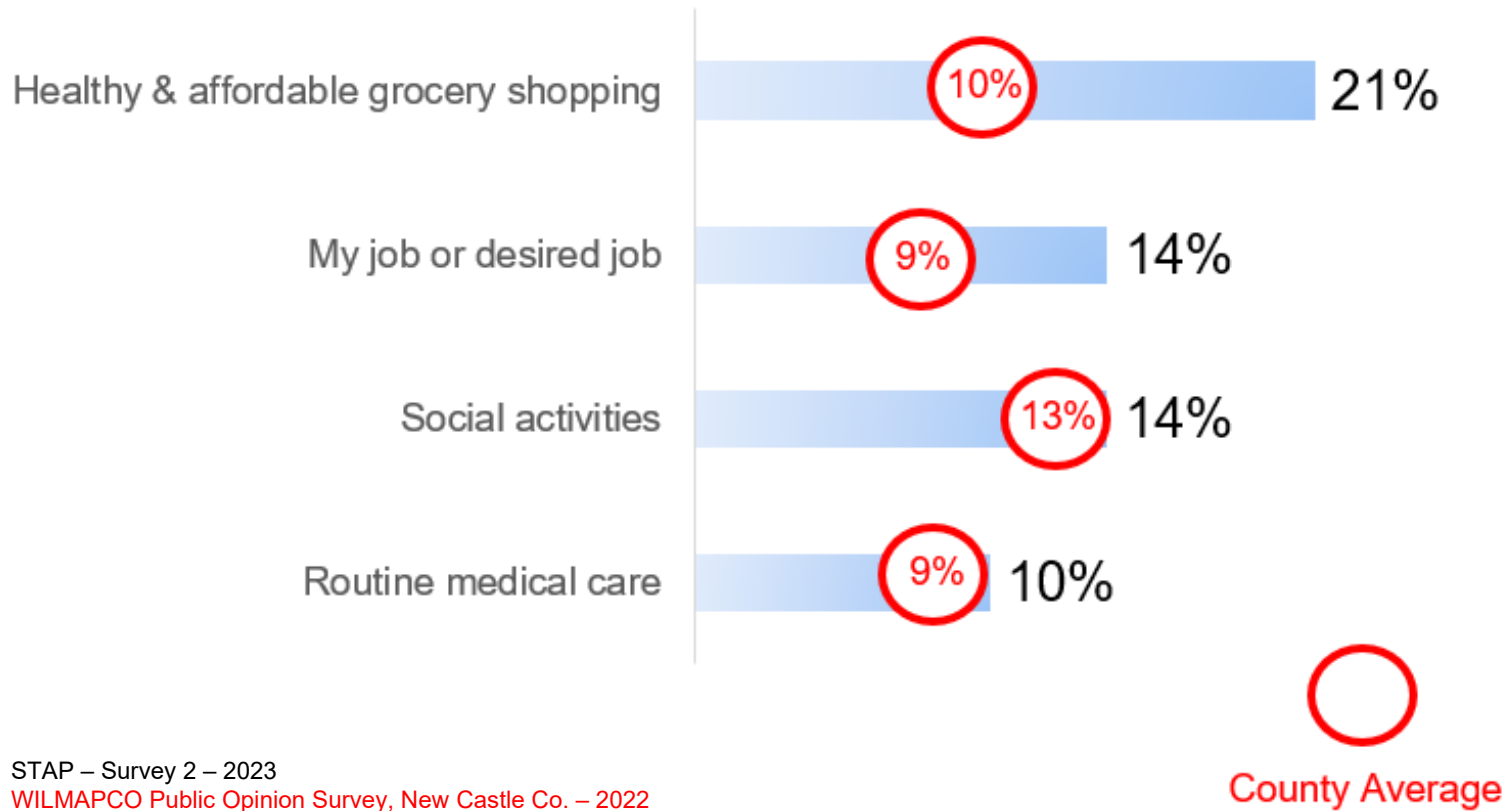
More lighting, beautification\*, wider sidewalks\*\* – 38, 33, 32 votes

# Transportation Limits Me From Reaching . . .



STAP – Survey 2, 2023

# Transportation Limits Me From Reaching . . .

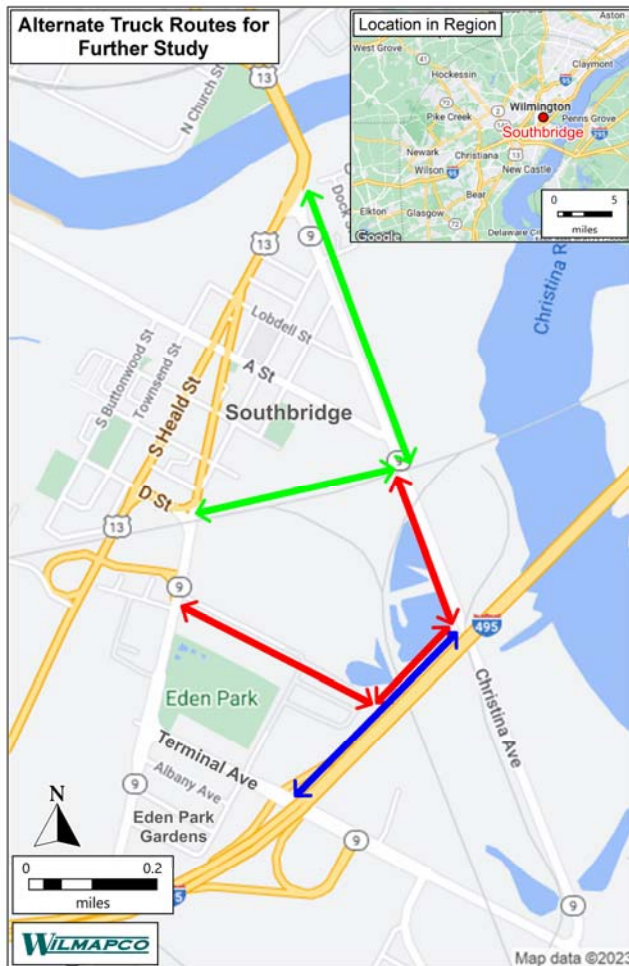


STAP – Survey 2 – 2023  
WILMAPCO Public Opinion Survey, New Castle Co. – 2022

## Example: Bus Connectivity

- Add Sunday service to ShopRite
- Examine frequency improvements
- Increase community marketing
- Examine route deviations into Southbridge





- Truck volumes the top community transportation concern
- Examine efficient new link between Christina Ave. and Terminal Ave.
- Grant application for study made



[wilmapco.org/Southbridge](http://wilmapco.org/Southbridge)

